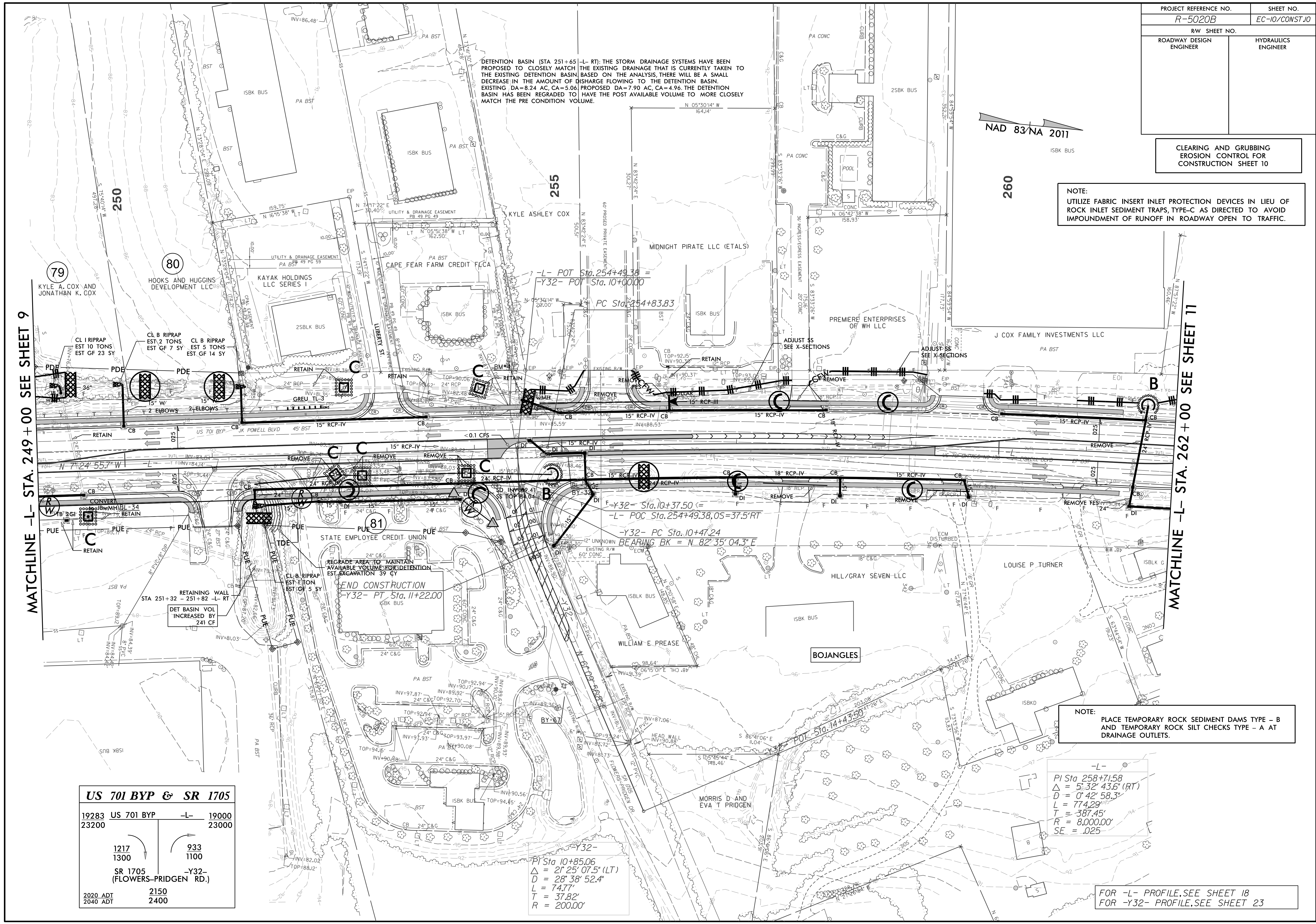


PROJECT REFERENCE NO.	SHEET NO.
R-5020B	EC-10/CONST-10
RW SHEET NO.	
ROADWAY DESIGN ENGINEER	HYDRAULICS ENGINEER

CLEARING AND GRUBBING
EROSION CONTROL FOR
CONSTRUCTION SHEET 10

NOTE:
UTILIZE FABRIC INSERT INLET PROTECTION DEVICES IN LIEU OF
ROCK INLET SEDIMENT TRAPS, TYPE-C AS DIRECTED TO AVOID
IMPOUNDMENT OF RUNOFF IN ROADWAY OPEN TO TRAFFIC.



MATCHLINE -L- STA. 249+00 SEE SHEET 9

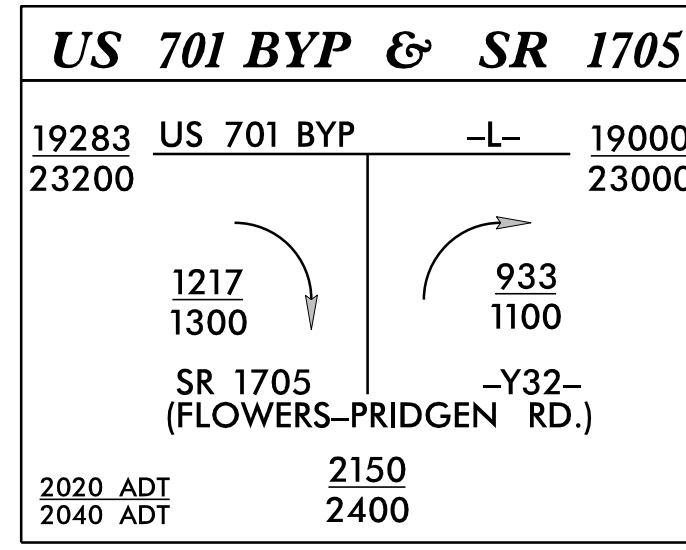
MATCHLINE -L- STA. 262+00 SEE SHEET 11

DETENTION BASIN (STA 251+65 -L- RT): THE STORM DRAINAGE SYSTEMS HAVE BEEN PROPOSED TO CLOSELY MATCH THE EXISTING DRAINAGE THAT IS CURRENTLY TAKEN TO THE EXISTING DETENTION BASIN. BASED ON THE ANALYSIS, THERE WILL BE A SMALL DECREASE IN THE AMOUNT OF DISCHARGE FLOWING TO THE DETENTION BASIN. EXISTING DA=8.24 AC, CA=5.06 PROPOSED DA=7.90 AC, CA=4.98. THE DETENTION BASIN HAS BEEN REGRADED TO HAVE THE POST AVAILABLE VOLUME TO MORE CLOSELY MATCH THE PRE CONDITION VOLUME.

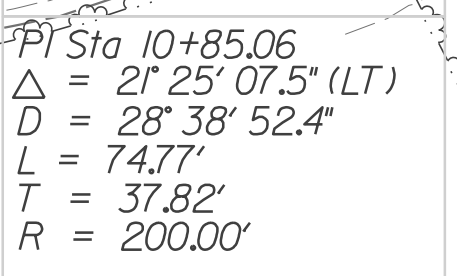
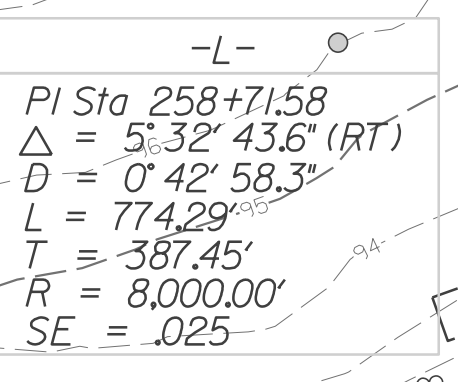
79 KYLE A. COX AND JONATHAN K. COX
80 HOOKS AND HUGGINS DEVELOPMENT LLC
KAYAK HOLDINGS LLC SERIES I

-L- POT Sta. 254+49.38 =
-Y32- POT Sta. 10+0000
PC Sta. 254+83.83

REGRADE AREA TO MAINTAIN AVAILABLE VOLUME FOR DETENTION
EST. EXCAVATION 39 CY
END CONSTRUCTION
-Y32- PT Sta. 11+22.00



NOTE:
PLACE TEMPORARY ROCK SEDIMENT DAMS TYPE - B AND TEMPORARY ROCK SILT CHECKS TYPE - A AT DRAINAGE OUTLETS.



FOR -L- PROFILE, SEE SHEET 18
FOR -Y32- PROFILE, SEE SHEET 23