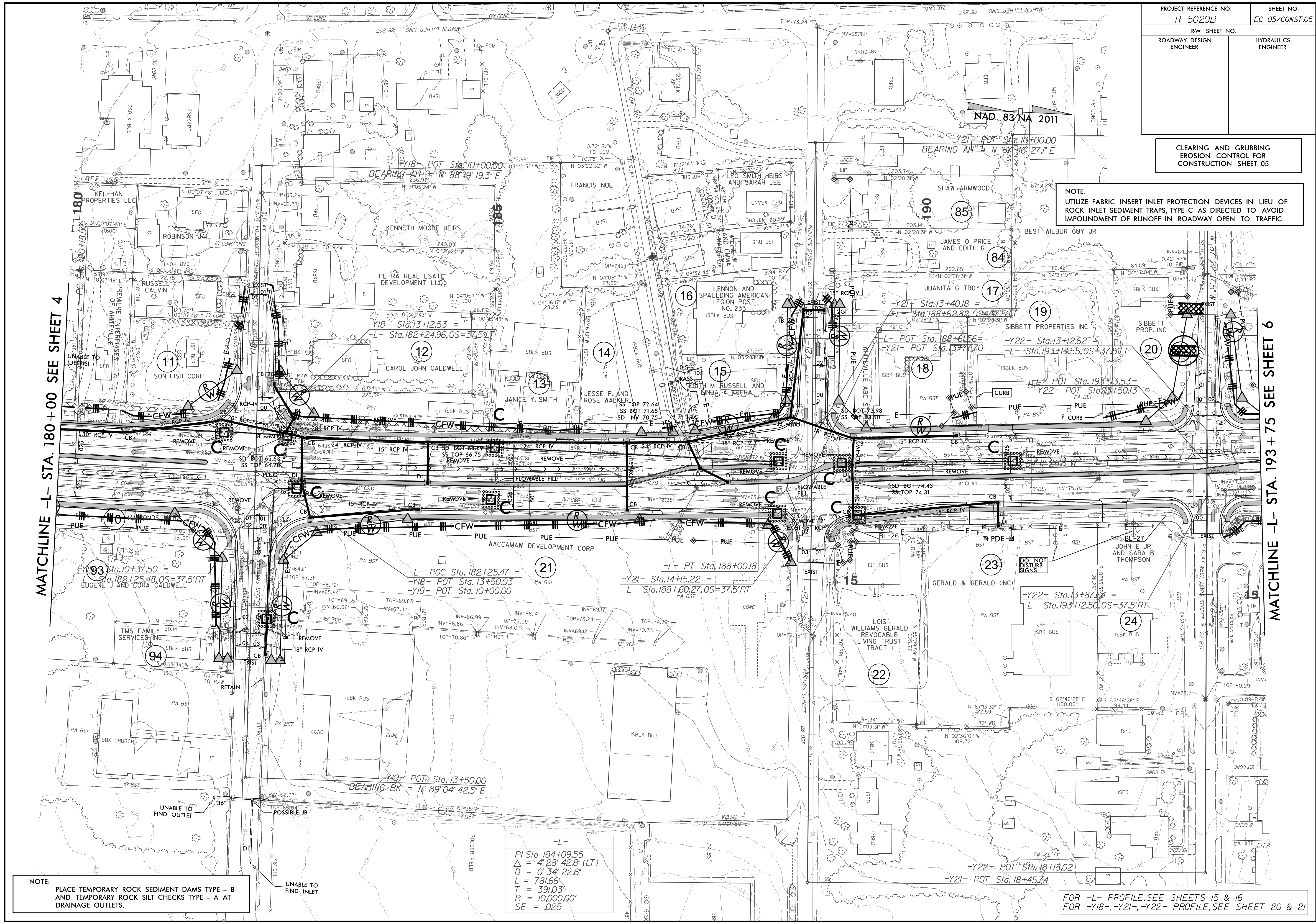


PROJECT REFERENCE NO.	SHEET NO.
R-5020B	EC-05/CONST.05
RW SHEET NO.	
ROADWAY DESIGN ENGINEER	HYDRAULICS ENGINEER

CLEARING AND GRUBBING
EROSION CONTROL FOR
CONSTRUCTION SHEET 05

NOTE:
UTILIZE FABRIC INSERT INLET PROTECTION DEVICES IN LIEU OF
ROCK INLET SEDIMENT TRAPS, TYPE-C AS DIRECTED TO AVOID
IMPOUNDMENT OF RUNOFF IN ROADWAY OPEN TO TRAFFIC.



MATCHLINE -L- STA. 180+00 SEE SHEET 4

MATCHLINE -L- STA. 193+75 SEE SHEET 6

NOTE:
PLACE TEMPORARY ROCK SEDIMENT DAMS TYPE - B
AND TEMPORARY ROCK SILT CHECKS TYPE - A AT
DRAINAGE OUTLETS.

-L-
PI Sta 184+09.55
Δ = 4' 28" 42.8" (LT)
D = 0' 34" 22.6"
L = 781.66'
T = 391.03'
R = 10,000.00'
SE = .025

FOR -L- PROFILE, SEE SHEETS 15 & 16
FOR -Y18-, -Y21-, -Y22- PROFILE, SEE SHEET 20 & 21