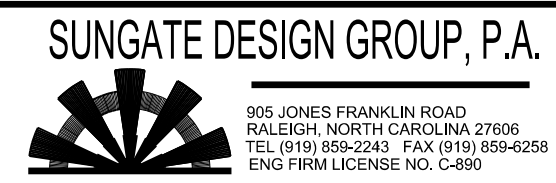
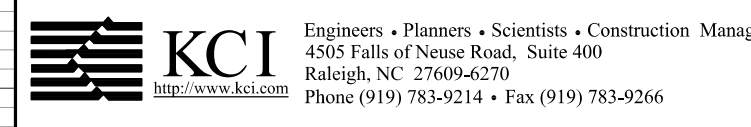
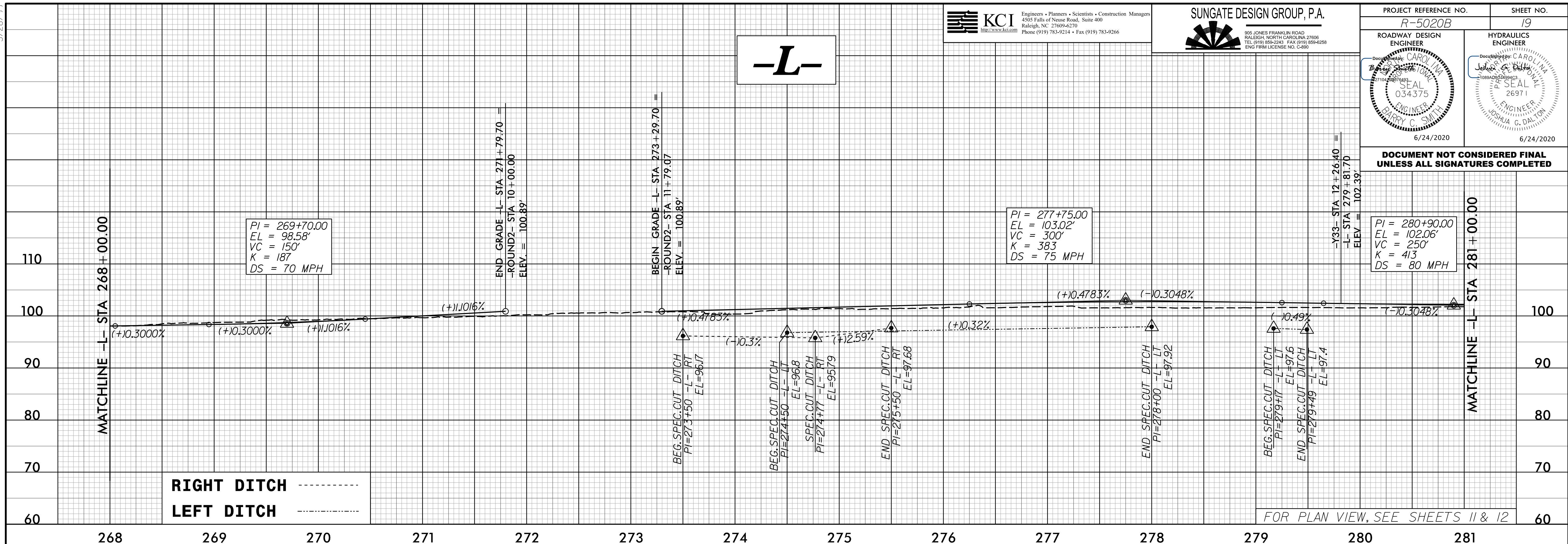


5/28/20



PROJECT REFERENCE NO. R-5020B	SHEET NO. 19
ROADWAY DESIGN ENGINEER BRADY C. SMITH 034375 6/24/2020	HYDRAULICS ENGINEER JOSHUA S. DALTON 26971 6/24/2020

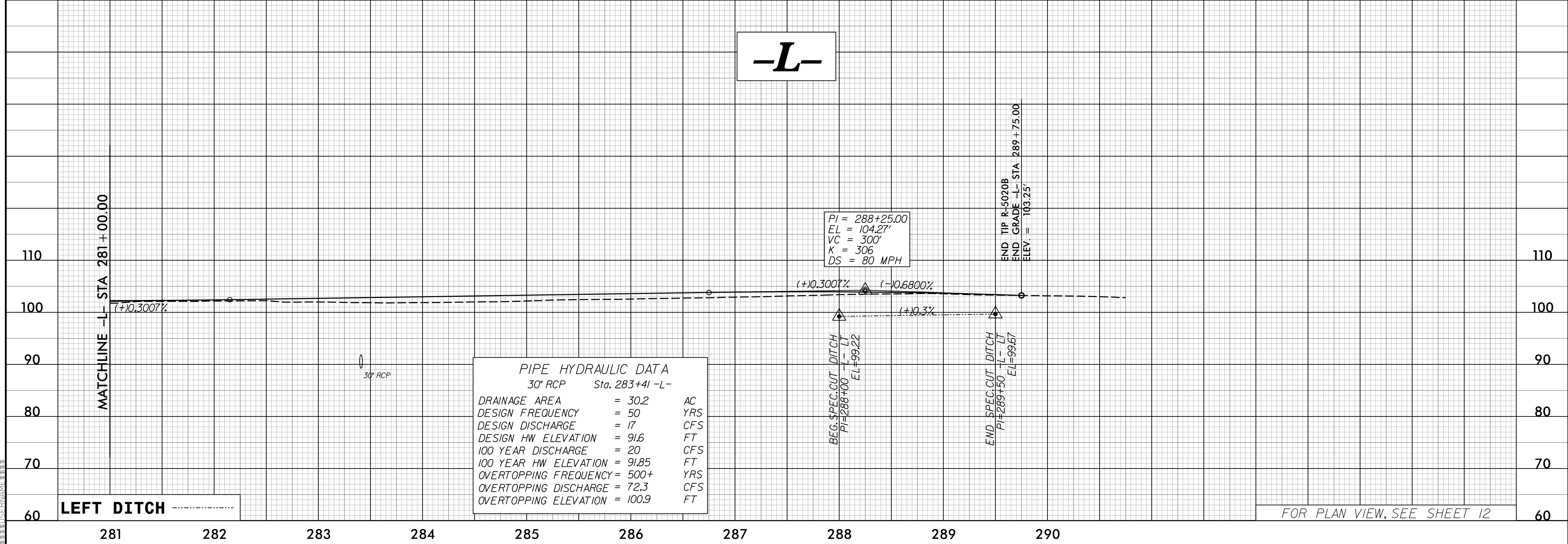
DOCUMENT NOT CONSIDERED FINAL UNLESS ALL SIGNATURES COMPLETED



RIGHT DITCH -----
LEFT DITCH -----

FOR PLAN VIEW, SEE SHEETS 11 & 12

R-5020B.dwg, 11/28/20, 10:16:39 AM, C:\Users\brad.smith\OneDrive\Documents\Projects\5020B\Roadway\Pro\5020B_Rdy.pfl_sheet_layout.dgn



PIPE HYDRAULIC DATA
30" RCP Sta. 283+41 -L-

DRAINAGE AREA	= 30.2	AC
DESIGN FREQUENCY	= 50	YRS
DESIGN DISCHARGE	= 17	CFS
DESIGN HW ELEVATION	= 91.6	FT
100 YEAR DISCHARGE	= 20	CFS
100 YEAR HW ELEVATION	= 91.85	FT
OVERTOPPING FREQUENCY	= 500+	YRS
OVERTOPPING DISCHARGE	= 72.3	CFS
OVERTOPPING ELEVATION	= 100.9	FT

FOR PLAN VIEW, SEE SHEET 12