

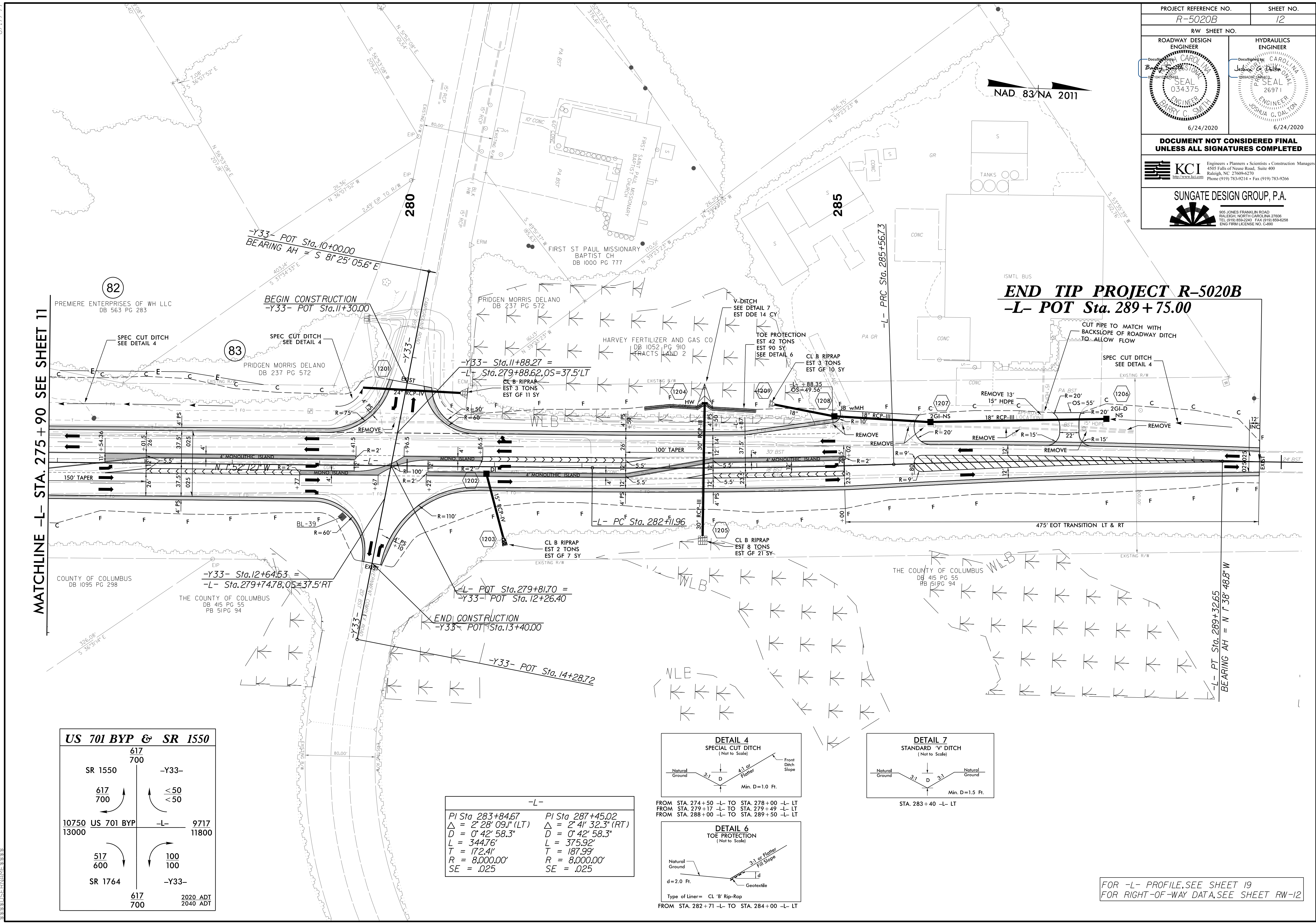


| | | | |
|---|--|---|--|
| PROJECT REFERENCE NO. R-5020B | | SHEET NO. 12 | |
| RW SHEET NO. | | | |
| ROADWAY DESIGN ENGINEER Barry C. Smith Professional Seal 034375 6/24/2020 | | HYDRAULICS ENGINEER Joshua G. Dalton Professional Seal 26971 6/24/2020 | |
| DOCUMENT NOT CONSIDERED FINAL UNLESS ALL SIGNATURES COMPLETED | | | |
|  KCI <small>Engineers • Planners • Scientists • Construction Managers 4505 Falls of Neuse Road, Suite 400 Raleigh, NC 27609-6270 Phone (919) 783-9214 • Fax (919) 783-9266</small> | | | |
|  SUNGATE DESIGN GROUP, P.A. <small>800 JONES FRANKLIN ROAD RALEIGH, NORTH CAROLINA 27606 TEL (919) 859-2243 FAX (919) 859-6258 ENG FIRM LICENSE NO. C-460</small> | | | |

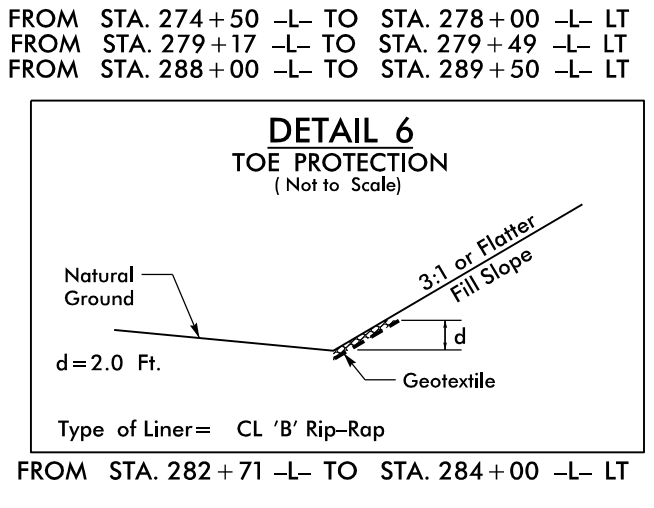
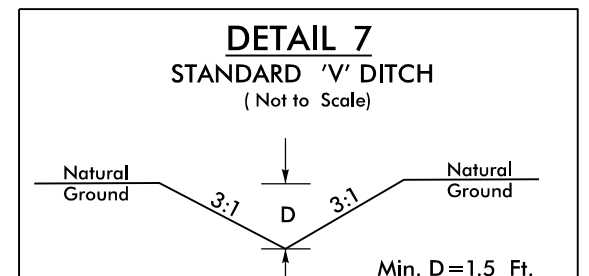
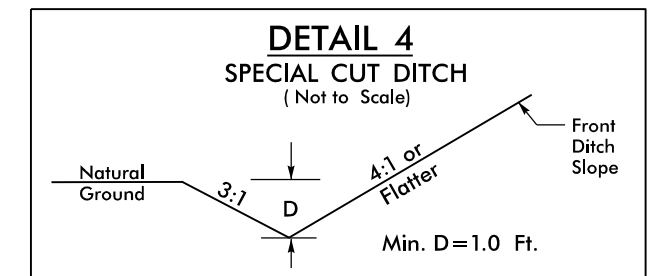


MATCHLINE -L- STA. 275 + 90 SEE SHEET 11

END TIP PROJECT R-5020B -L- POT Sta. 289 + 75.00

| US 701 BYP & SR 1550 | | | |
|----------------------|------------|-------|----------------------|
| SR 1550 | 617 700 | -Y33- | |
| | 617 700 | < 50 | < 50 |
| 10750 13000 | US 701 BYP | -L- | 9717 11800 |
| 517 600 | | 100 | 100 |
| SR 1764 | | -Y33- | |
| | 617 700 | | 2020 ADT 2040 ADT |

| -L- | |
|-------------------------------|-------------------------------|
| PI Sta 283+84.67 | PI Sta 287+45.02 |
| $\Delta = 2' 28' 09.1''$ (LT) | $\Delta = 2' 41' 32.3''$ (RT) |
| $D = 0' 42' 58.3''$ | $D = 0' 42' 58.3''$ |
| $L = 344.76'$ | $L = 375.92'$ |
| $T = 172.41'$ | $T = 187.99'$ |
| $R = 8,000.00'$ | $R = 8,000.00'$ |
| $SE = .025$ | $SE = .025$ |



FOR -L- PROFILE, SEE SHEET 19
FOR RIGHT-OF-WAY DATA, SEE SHEET RW-12

8.17.7.99
R-5020B_11289.ncdot R-5020B US 701 Wrdmng\Roadway\Proc\N\5020B_Rdw_psh_12.dgn
R-5020B_11289.ncdot R-5020B US 701 Wrdmng\Roadway\Proc\N\5020B_Rdw_psh_12.dgn
R-5020B_11289.ncdot R-5020B US 701 Wrdmng\Roadway\Proc\N\5020B_Rdw_psh_12.dgn