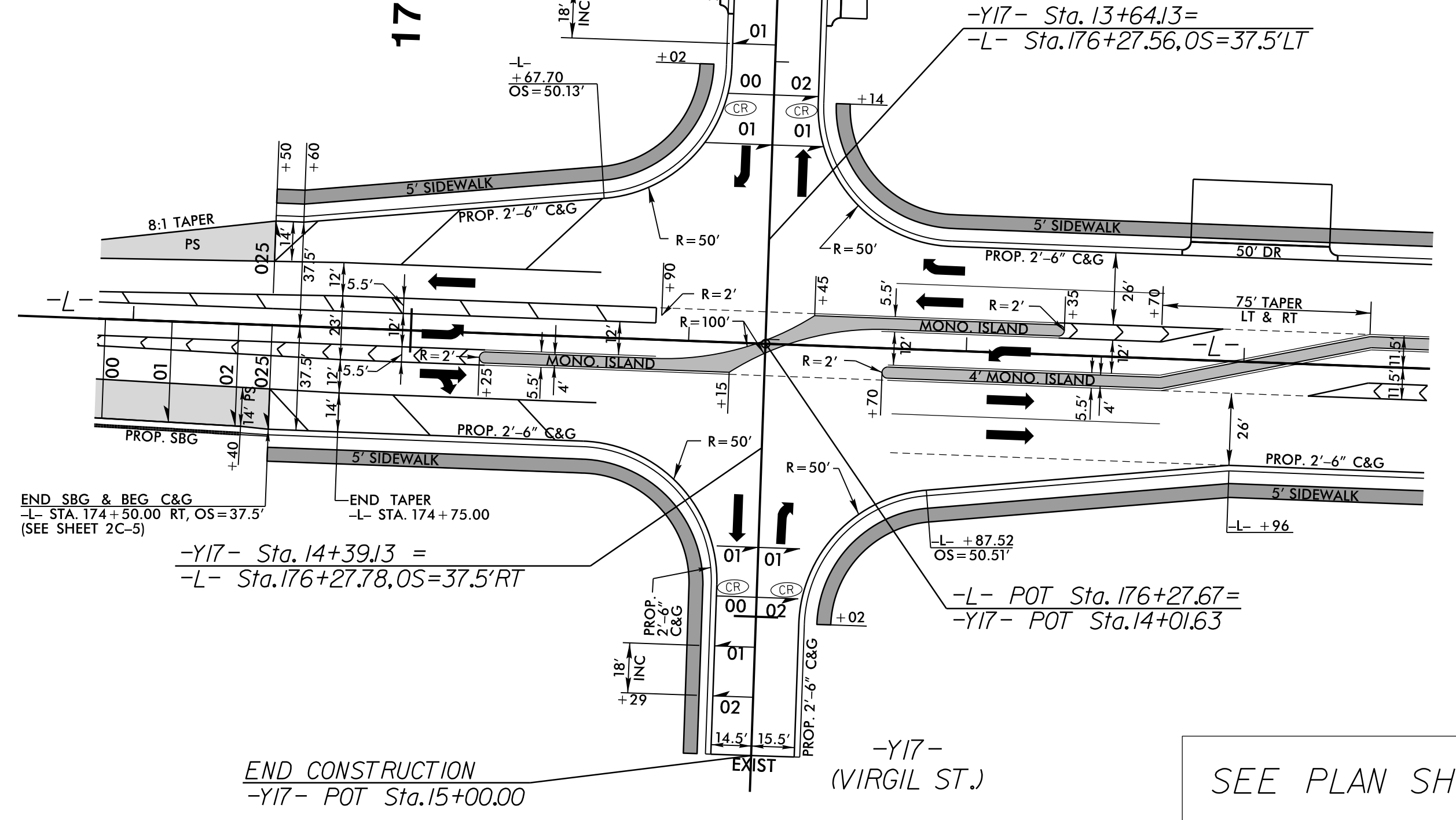


6/2/2019

### INTERSECTION DETAIL 1

#### -L- AND -Y17- (VIRGIL ST.)

NAD 83 /NA 2011



SEE PLAN SHEET 4

### INTERSECTION DETAIL 2

#### -L-, -Y18-, AND -Y19- (COLUMBUS ST.)

BEGIN CONSTRUCTION  
-Y18- POT Sta.11+40.00

-Y18- Sta.13+12.53 =  
-L- Sta.182+24.96, OS=37.5'LT  
-L- PC Sta.180+18.53

-Y19- Sta.10+37.50 =  
-L- Sta.182+25.48, OS=37.5'RT

-L- POC Sta.182+25.47 =  
-Y18- POT Sta.13+50.03  
-Y19- POT Sta.10+00.00

END CONSTRUCTION  
-Y19- POT Sta.12+15.00

SEE PLAN SHEET 5

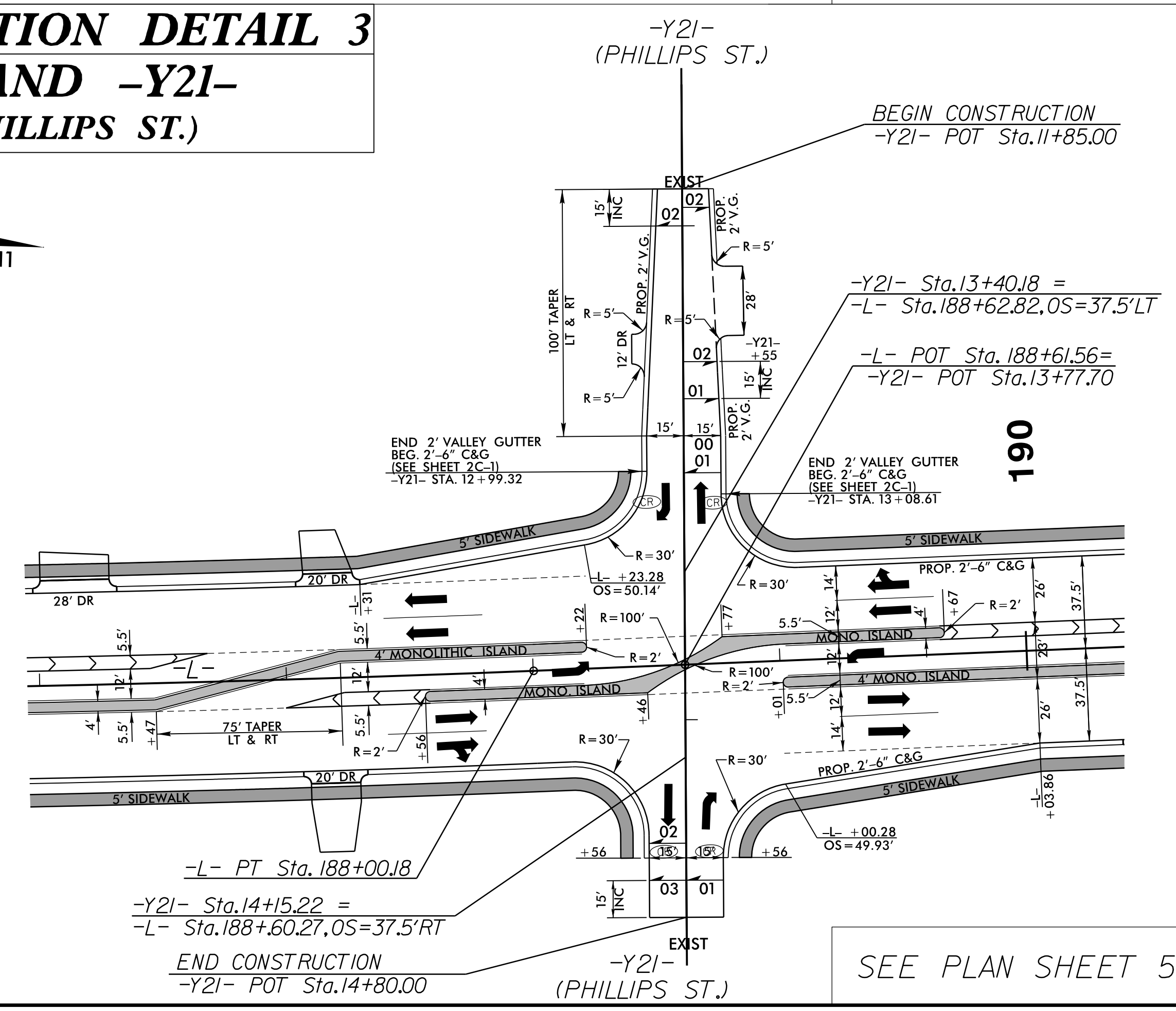
NOTE:  
V.G. = VALLEY GUTTER



### INTERSECTION DETAIL 3

#### -L- AND -Y21- (PHILLIPS ST.)

NAD 83 /NA 2011



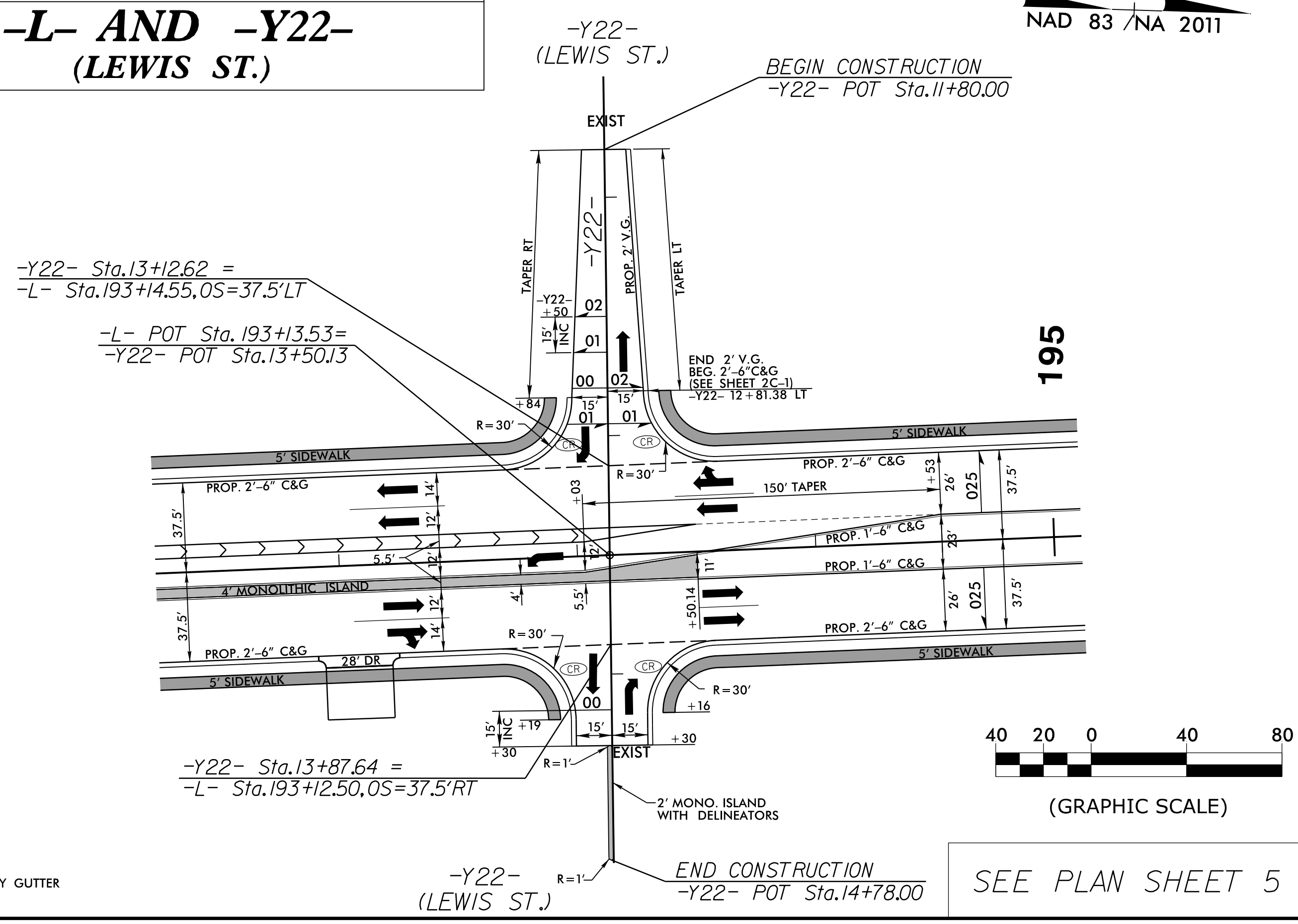
SEE PLAN SHEET 5

NOTE:  
V.G. = VALLEY GUTTER

### INTERSECTION DETAIL 4

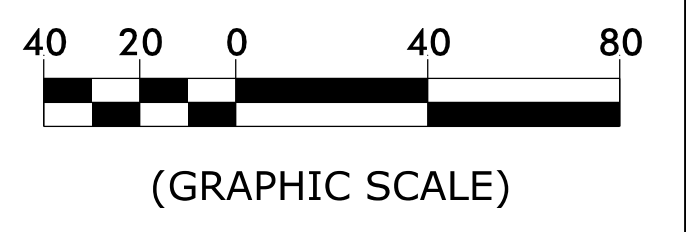
#### -L- AND -Y22- (LEWIS ST.)

NAD 83 /NA 2011



SEE PLAN SHEET 5

NOTE:  
V.G. = VALLEY GUTTER



PROJECT REFERENCE NO. R-5020B SHEET NO. 2B-3

ROADWAY DESIGN ENGINEER  

 6/24/2020

**DOCUMENT NOT CONSIDERED FINAL  
UNLESS ALL SIGNATURES COMPLETED**

**KCI**  
 Engineers • Planners • Scientists • Construction Managers  
 4505 Falls of Neuse Road, Suite 400  
 Raleigh, NC 27604-6270  
 Phone (919) 783-9214 • Fax (919) 783-9266

C:\MAR2020\10366\NCDDT R-5020B US 701 Widening\Roadway\Proj\R-5020B\_Rdy.dtl\Intersections.dgn