

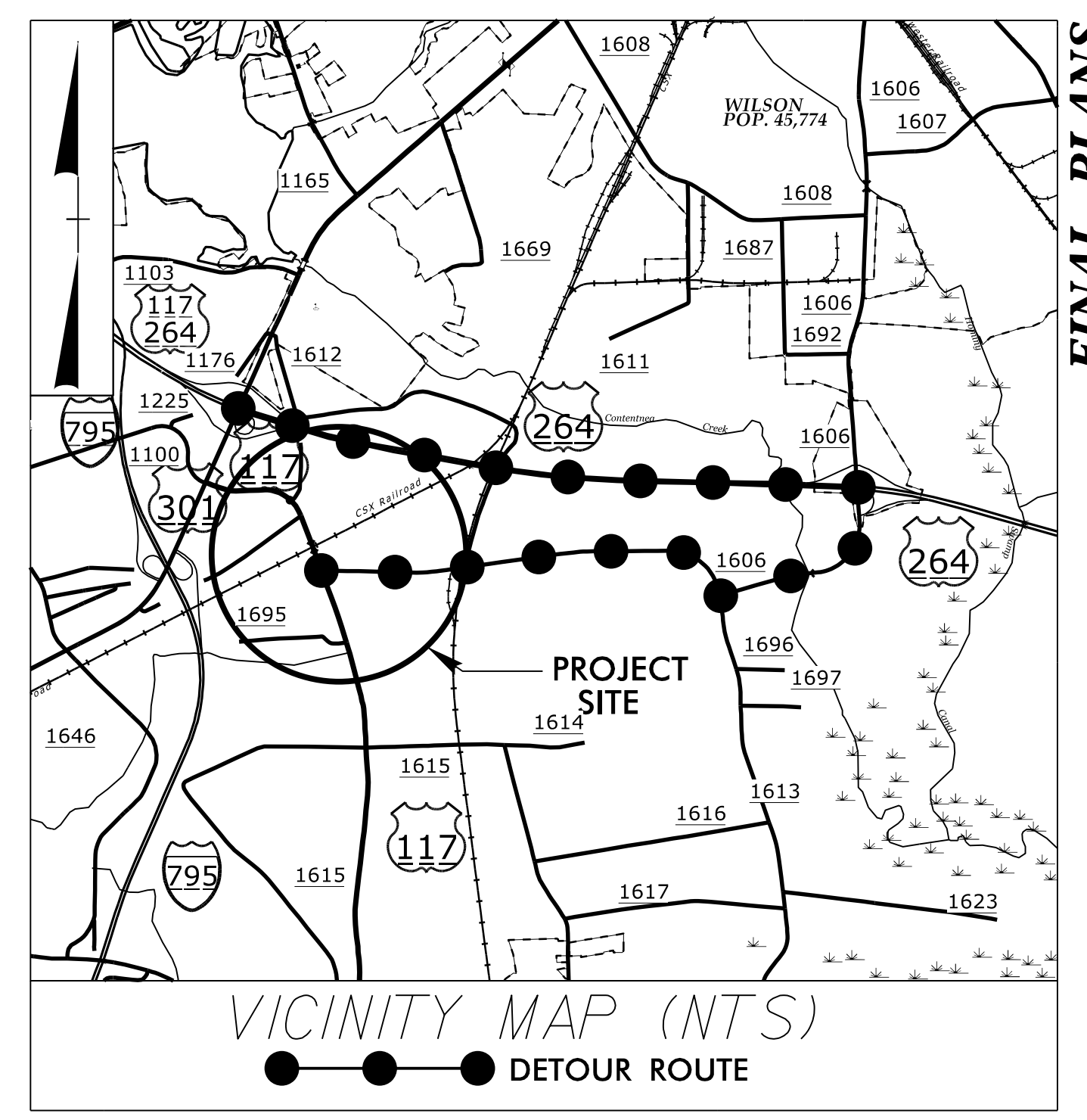
STATE OF NORTH CAROLINA
DIVISION OF HIGHWAYS

WILSON COUNTY

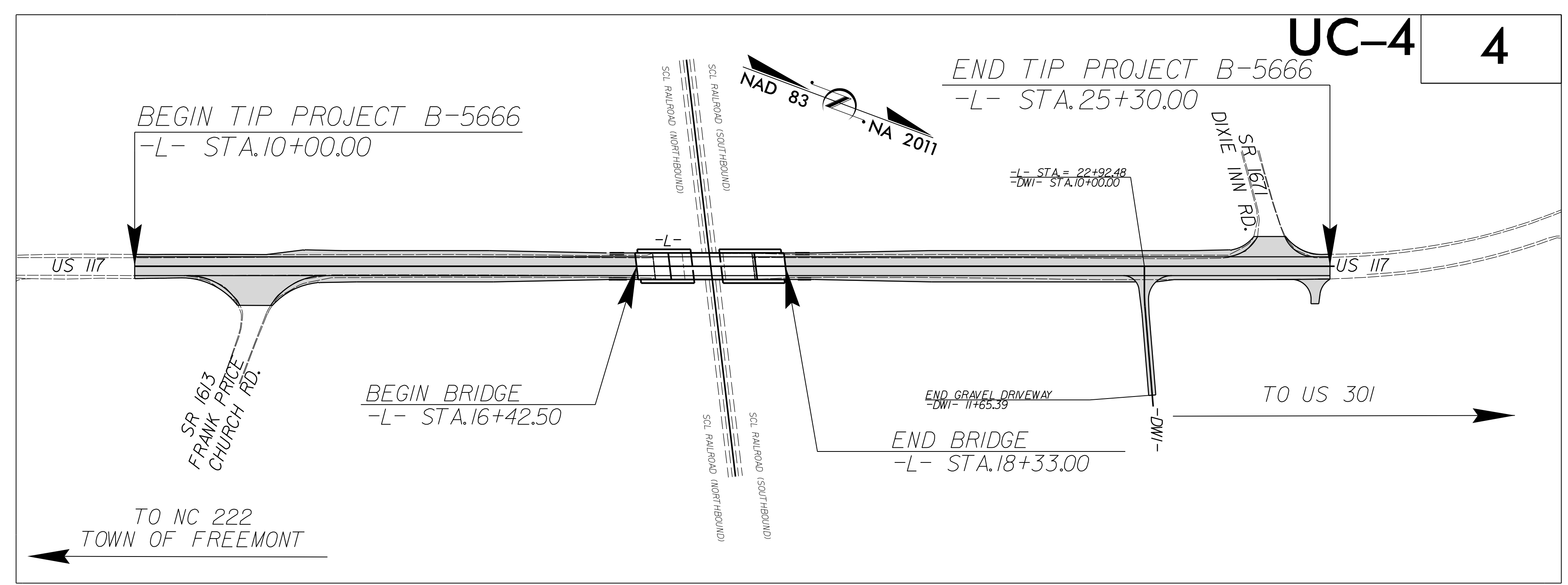
**LOCATION: REPLACE BRIDGE NO. 47 OVER SEABOARD
COAST LINE RAILROAD ON US 117**

TYPE OF WORK: WATERLINE ABANDONMENT

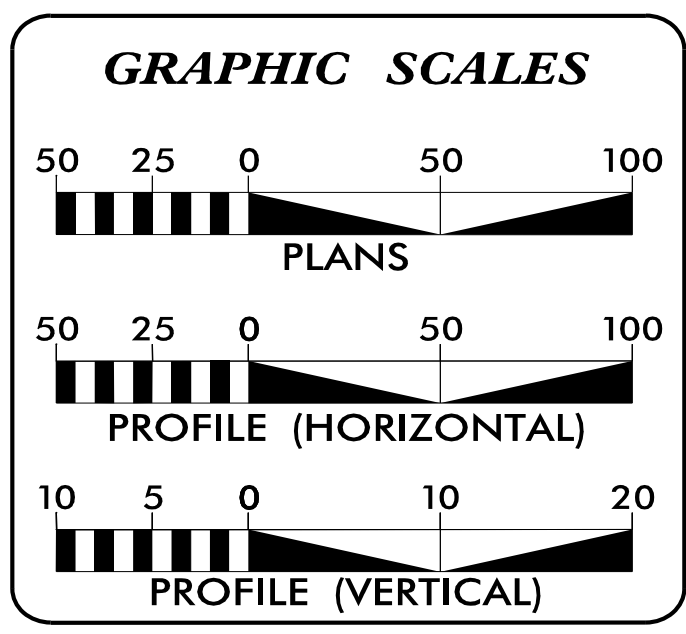
TIP PROJECT: B-5666



FINAL PLANS



DOCUMENT NOT CONSIDERED FINAL
UNTIL ALL SIGNATURES ARE COMPLETED



SHEET NO.:	DESCRIPTION:
UC-1	TITLE SHEET
UC-2	UTILITY SYMBOLOGY
UC-3	NOTES
UC-3A	DETAILS
UC-3B	DETAILS
UC-4	UTILITY PLAN SHEET

**WATER OWNER
ON PROJECT**

TOWN OF BLACK CREEK
112 WEST CENTER STREET
POST OFFICE BOX 8
BLACK CREEK, NC 27813

PREPARED IN THE OFFICE OF

KCI
Engineers • Planners • Scientists • Construction Managers
4505 Falls of Neuse Road, Suite 400
Raleigh, NC 27609
Phone (919) 783-9214 • Fax (919) 783-9266
License No. C-764

DINKISSA KEREYU, PE PROJECT ENGINEER
MARCO MENENDEZ, PE PROJECT MANAGER
CHARLES SHEARON PROJECT DESIGNER

SEAL

**DIVISION OF HIGHWAYS
UTILITIES UNIT**
1555 MAIL SERVICES CENTER
RALEIGH, NC 27699-1555
PHONE (919) 707-6690
FAX (919) 250-4151

NABIL HAMDAN UTILITIES REGIONAL ENGINEER
KIFAH KAMIL UTILITIES ENGINEER
KYLE PLEASANT UTILITIES AREA COORDINATOR
LARRY JAMES UTILITIES COORDINATOR

STATE OF NORTH CAROLINA
DIVISION OF HIGHWAYS

UTILITIES PLAN SHEET SYMBOLS

PROPOSED WATER SYMBOLS

Water Line (Sized as Shown)	
11 1/4 Degree Bend	
22 1/2 Degree Bend	
45 Degree Bend	
90 Degree Bend	
Plug	
Tee	
Cross	
Reducer	
Gate Valve	
Butterfly Valve	
Tapping Valve	
Line Stop	
Line Stop with Bypass	
Blow Off	
Fire Hydrant	
Relocate Fire Hydrant	
Remove Fire Hydrant	REM FH
Water Meter	
Relocate Water Meter	
Remove Water Meter	REM WM
Water Pump Station	
RPZ Backflow Preventer	
DCV Backflow Preventer	
Relocate RPZ Backflow Preventer	
Relocate DCV Backflow Preventer	

PROPOSED MISCELLANEOUS UTILITIES SYMBOLS

Power Pole	
Telephone Pole	
Joint Use Pole	
Telephone Pedestal	
Utility Line by Others (Type as Shown)	
Trenchless Installation	
Encasement by Open Cut	
Encasement	

Thrust Block	
Air Release Valve	
Utility Vault	
Concrete Pier	
Steel Pier	
Plan Note	
Pay Item Note	

NOTE
PAY ITEM

EXISTING UTILITIES SYMBOLS

Power Pole		*Underground Power Line	
Telephone Pole		*Underground Telephone Cable	
Joint Use Pole		*Underground Telephone Conduit	
Utility Pole		*Underground Fiber Optics Telephone Cable	
Utility Pole with Base		*Underground TV Cable	
H-Frame Pole		*Underground Fiber Optics TV Cable	
Power Transmission Line Tower		*Underground Gas Pipeline	
Water Manhole		Aboveground Gas Pipeline	
Power Manhole		*Underground Water Line	
Telephone Manhole		Aboveground Water Line	
Sanitary Sewer Manhole		*Underground Gravity Sanitary Sewer Line	
Hand Hole for Cable		Aboveground Gravity Sanitary Sewer Line	
Power Transformer		*Underground SS Forced Main Line	
Telephone Pedestal		Underground Unknown Utility Line	
CATV Pedestal		SUE Test Hole	
Gas Valve		Water Meter	
Gas Meter		Water Valve	
Located Miscellaneous Utility Object		Fire Hydrant	
Abandoned According to Utility Records	AATUR	Sanitary Sewer Cleanout	
End of Information	E.O.I.		

*For Existing Utilities
 Utility Line Drawn from Record (Type as Shown)
 Designated Utility Line (Type as Shown)

5/14/99
 20-185-2020-18:14
 C:\Users\18522\Documents\Wastewater\B-5666-ut-sym_UC02.psh.dgn
 REV: 2/1/2012

5/14/99

05 MAY 2020 10:42
C:\Users\jg\OneDrive\Documents\Wastewater\B5666.ut_notes_UC03_psh.dgn
45.22

UTILITY CONSTRUCTION



GENERAL NOTES:

1. THE PROPOSED UTILITY CONSTRUCTION SHALL MEET THE APPLICABLE REQUIREMENTS OF THE NC DEPARTMENT OF TRANSPORTATION'S "STANDARD SPECIFICATIONS FOR ROADS AND STRUCTURES" DATED JANUARY 2018.
2. THE EXISTING UTILITIES BELONG TO TOWN OF BLACK CREEK.
3. ALL WATER LINES TO BE INSTALLED WITHIN COMPLIANCE OF THE RULES AND REGULATIONS OF THE NORTH CAROLINA DEPARTMENT OF ENVIRONMENTAL QUALITY, DIVISION OF WATER RESOURCES, PUBLIC WATER SUPPLY SECTION. ALL SEWER LINES TO BE INSTALLED WITHIN COMPLIANCE OF THE RULES AND REGULATIONS OF THE NORTH CAROLINA DEPARTMENT OF ENVIRONMENT QUALITY, DIVISION OF WATER RESOURCES, WATER QUALITY SECTION. PERFORM ALL WORK IN ACCORDANCE WITH THE APPLICABLE PLUMBING CODES.
4. THE UTILITY OWNER OWNS THE EXISTING UTILITY FACILITIES AND WILL OWN THE NEW UTILITY FACILITIES AFTER ACCEPTANCE BY THE DEPARTMENT. THE DEPARTMENT OWNS THE CONSTRUCTION CONTRACT AND HAS ADMINISTRATIVE AUTHORITY. COMMUNICATIONS AND DECISIONS BETWEEN THE CONTRACTOR AND UTILITY OWNER ARE NOT BINDING UPON THE DEPARTMENT OR THIS CONTRACT UNLESS AUTHORIZED BY THE ENGINEER. AGREEMENTS BETWEEN THE UTILITY OWNER AND CONTRACTOR FOR THE WORK THAT IS NOT PART OF THIS CONTRACT OR IS SECONDARY TO THIS CONTRACT ARE ALLOWED, BUT ARE NOT BINDING UPON THE DEPARTMENT.
5. PROVIDE ACCESS FOR THE DEPARTMENT PERSONNEL AND THE OWNER'S REPRESENTATIVES TO ALL PHASES OF CONSTRUCTION. NOTIFY DEPARTMENT PERSONNEL AND THE UTILITY OWNER TWO WEEKS PRIOR TO COMMENCEMENT OF ANY WORK AND ONE WEEK PRIOR TO SERVICE INTERRUPTION. KEEP UTILITY OWNERS' REPRESENTATIVES INFORMED OF WORK PROGRESS AND PROVIDE OPPORTUNITY FOR INSPECTION OF CONSTRUCTION AND TESTING.

6. THE PLANS DEPICT THE BEST AVAILABLE INFORMATION FOR THE LOCATION, SIZE, AND TYPE OF MATERIAL FOR ALL EXISTING UTILITIES. MAKE INVESTIGATIONS FOR DETERMINING THE EXACT LOCATION, SIZE, AND TYPE MATERIAL OF THE EXISTING FACILITIES AS NECESSARY FOR THE CONSTRUCTION OF THE PROPOSED UTILITIES AND FOR AVOIDING DAMAGE TO EXISTING FACILITIES. REPAIR ANY DAMAGE INCURRED TO EXISTING FACILITIES TO THE ORIGINAL OR BETTER CONDITION AT NO ADDITIONAL COST TO THE DEPARTMENT.
7. MAKE FINAL CONNECTIONS OF THE NEW WORK TO THE EXISTING SYSTEM WHERE INDICATED ON THE PLANS, AS REQUIRED TO FIT THE ACTUAL CONDITIONS, OR AS DIRECTED.
8. MAKE CONNECTIONS BETWEEN EXISTING AND PROPOSED UTILITIES AT TIMES MOST CONVENIENT TO THE PUBLIC, WITHOUT ENDANGERING THE UTILITY SERVICE, AND IN ACCORDANCE WITH THE UTILITY OWNER'S REQUIREMENTS. MAKE CONNECTIONS ON WEEKENDS, AT NIGHT, AND ON HOLIDAYS IF NECESSARY.
9. ALL UTILITY MATERIALS SHALL BE APPROVED PRIOR TO DELIVERY TO THE PROJECT. SEE 1500-7, " SUBMITTALS AND RECORDS" IN SECTION 1500 OF THE STANDARD SPECIFICATIONS.

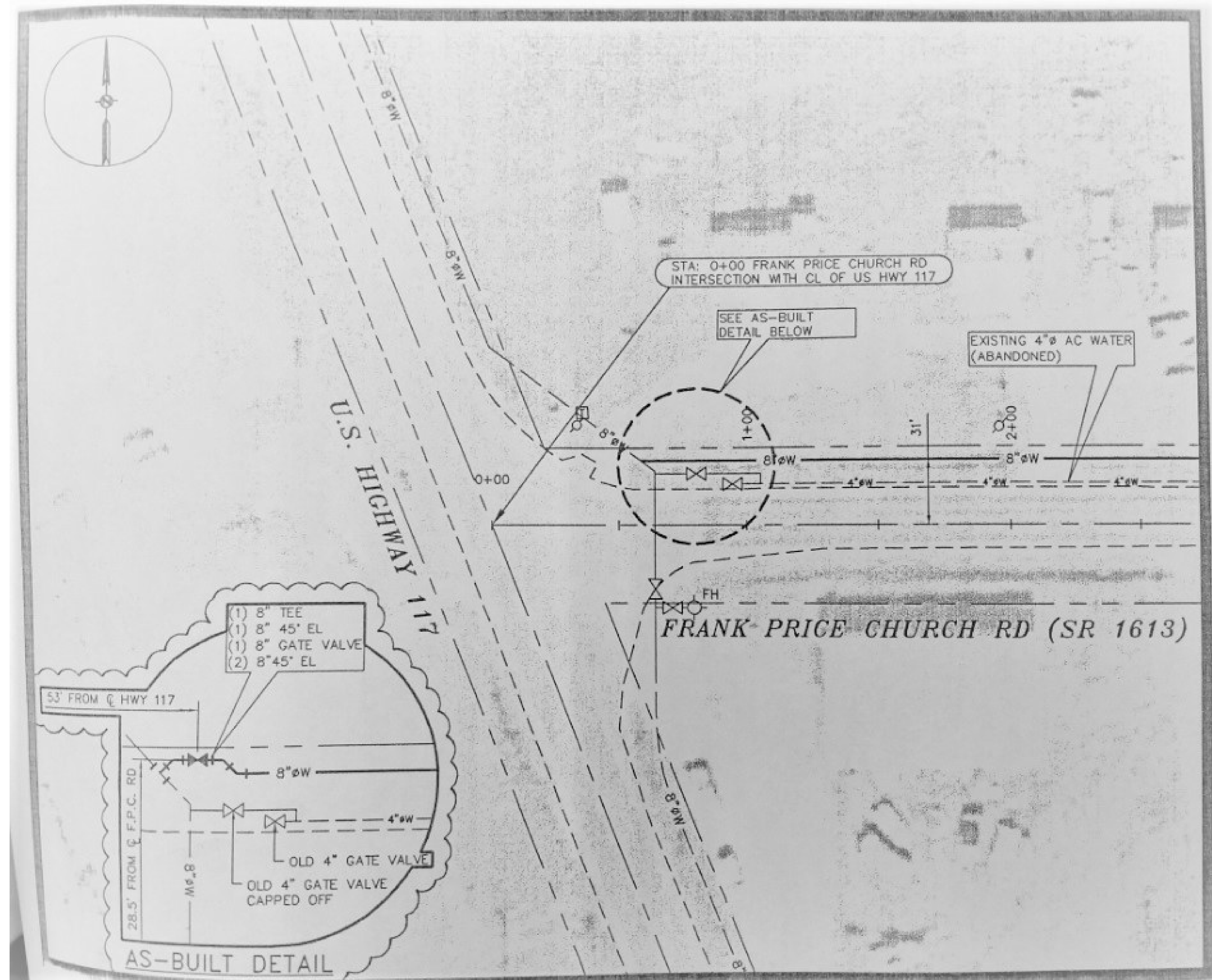
PROJECT SPECIFIC NOTES:

1. FOR ABONDONING THE UTILITY PIPE, CONTRACTOR SHALL INSTALL DOUBLE CAPS, JACK AND BUTRESS CONCRETE BLOCKING AS SHOWN IN THE STANDARD DETAIL SHEET UC-3B.
2. CONTRACTOR SHALL COORDINATE WITH THE TOWN OF BLACK CREEK FOR SHUTDOWN OF EXISTING WATER LINE.

PROJECT REFERENCE NO. B-5666	SHEET NO. UC-3
DESIGNED BY: DK	
DRAWN BY: CS	
CHECKED BY: MM	
APPROVED BY:	
REVISED:	
NORTH CAROLINA DEPARTMENT OF TRANSPORTATION UTILITIES ENGINEERING SEC. PHONE: (919) 707-6690 FAX: (919) 250-4151	
UTILITY CONSTRUCTION PLANS ONLY  Engineers • Planners • Scientists • Construction Managers 4500 Falls of Neuse Road, Suite 400 Raleigh, NC 27609 Phone (919) 783-9214 • Fax (919) 783-9266 License No. C-764	

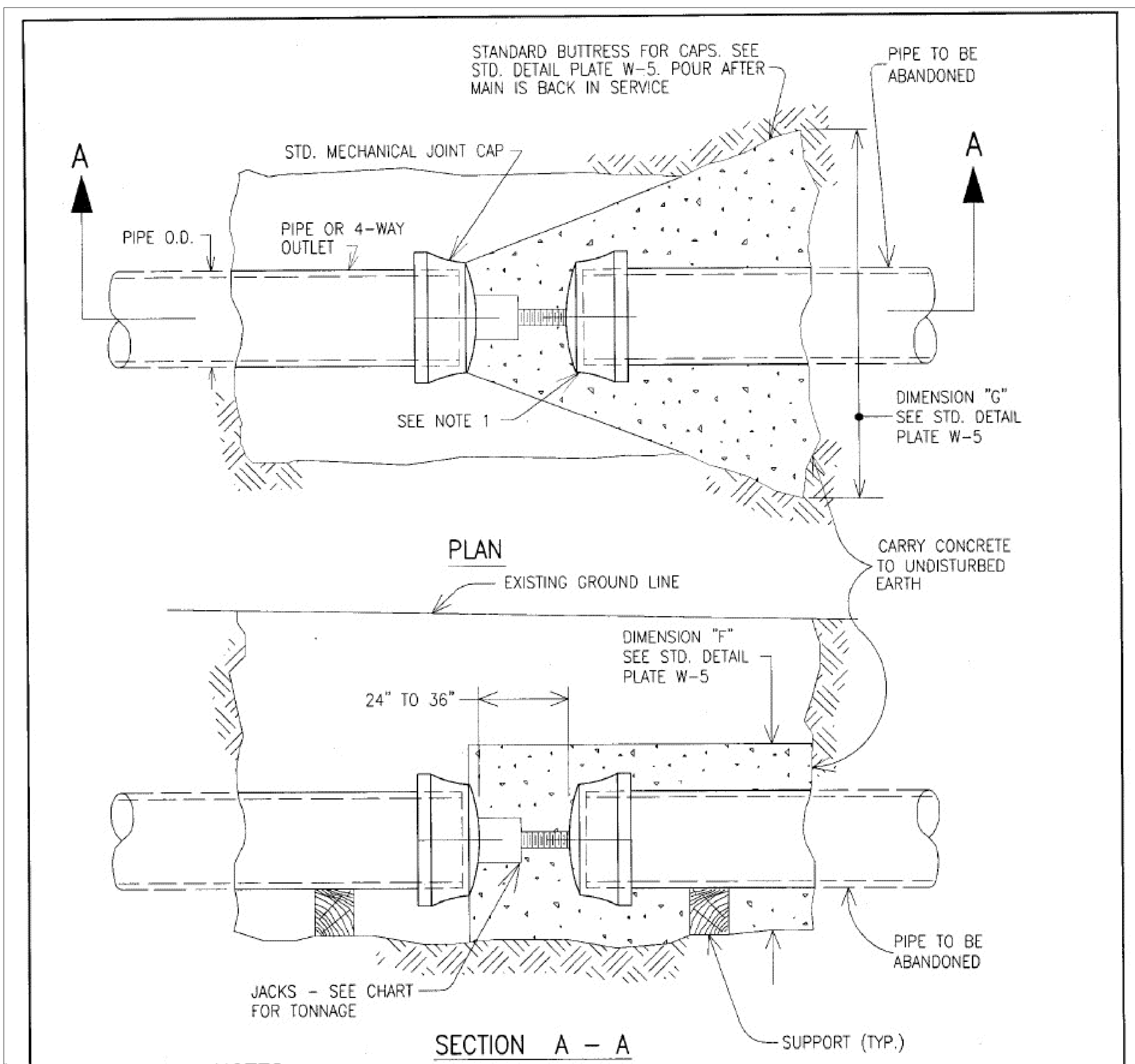
UTILITY CONSTRUCTION
DOCUMENT NOT CONSIDERED FINAL
UNLESS ALL SIGNATURES COMPLETED

PROJECT REFERENCE NO. B-5666	SHEET NO. UC-3A
DESIGNED BY: DK	
DRAWN BY: CS	
CHECKED BY: MM	
APPROVED BY:	
REVISER:	2/19/2021
NORTH CAROLINA DEPARTMENT OF TRANSPORTATION	UTILITY CONSTRUCTION PLANS ONLY
UTILITIES ENGINEERING SEC. PHONE: (919) 707-6690 FAX: (919) 250-4151	 <small>Engineers • Planners • Scientists • Construction Managers</small> <small>4500 Falls of Neuse Road, Suite 400</small> <small>Raleigh, NC 27609</small> <small>Phone (919) 783-9214 • Fax (919) 783-9266</small> <small>License No. C-764</small>



UTILITY CONSTRUCTION
DOCUMENT NOT CONSIDERED FINAL
UNLESS ALL SIGNATURES COMPLETED

EXISTING CONNECTION DETAILS (AS-BUILT)

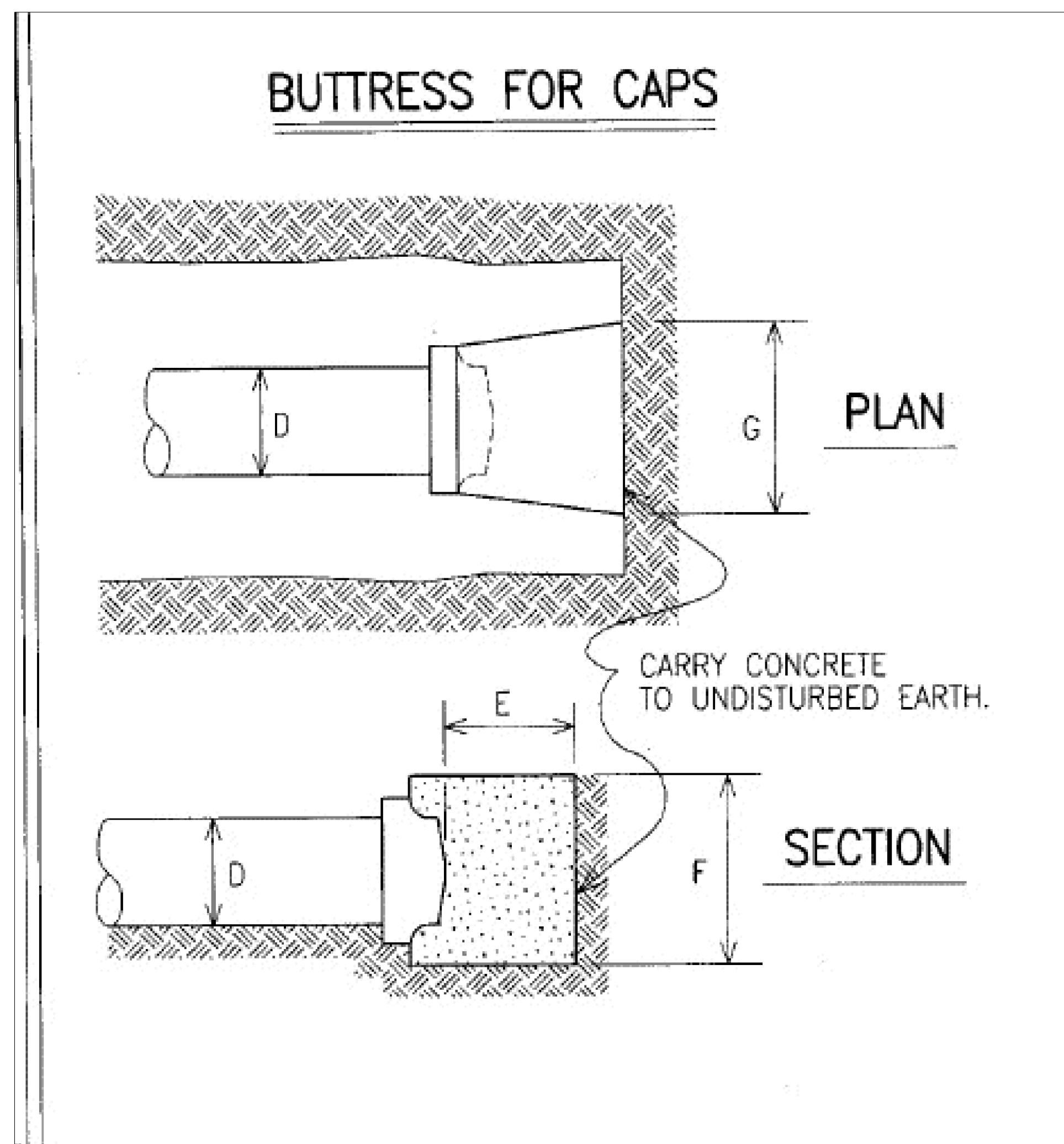


- NOTES**
- GLAND, BOLTS AND GASKET NOT REQUIRED ON THIS CAP UNLESS LEAKAGE IS PRESENT IN ABANDONED PIPE. FOR CAP DIAMETER > 12", JACK LOAD WITH BLOCKING ON CAPS.
 - O.D. MEASURED IN INCHES.
 - IN LIEU OF JACK, STEEL BLOCKING OF SAME CAPACITY MAY BE USED.

JACK TONNAGE CHART	
JACK TONNAGE @ 100 psi	$\frac{O.D.^2}{25}$ TONS
JACK TONNAGE @ 150 psi	$\frac{O.D.^2}{16}$ TONS
JACK TONNAGE @ 200 psi	$\frac{O.D.^2}{12}$ TONS

DOUBLE CAPS, JACK AND BUTTRESS

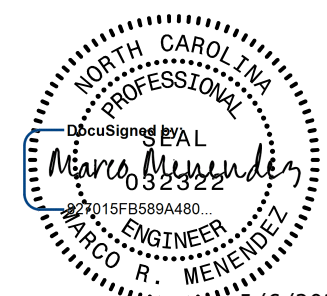

UTILITY CONSTRUCTION
 DOCUMENT NOT CONSIDERED FINAL
 UNLESS ALL SIGNATURES COMPLETED



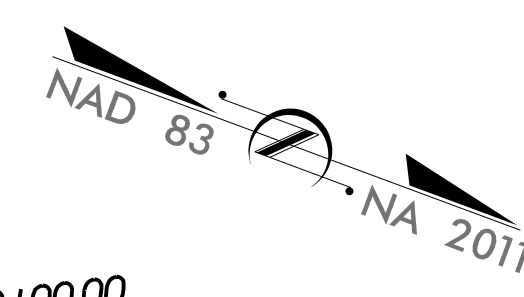
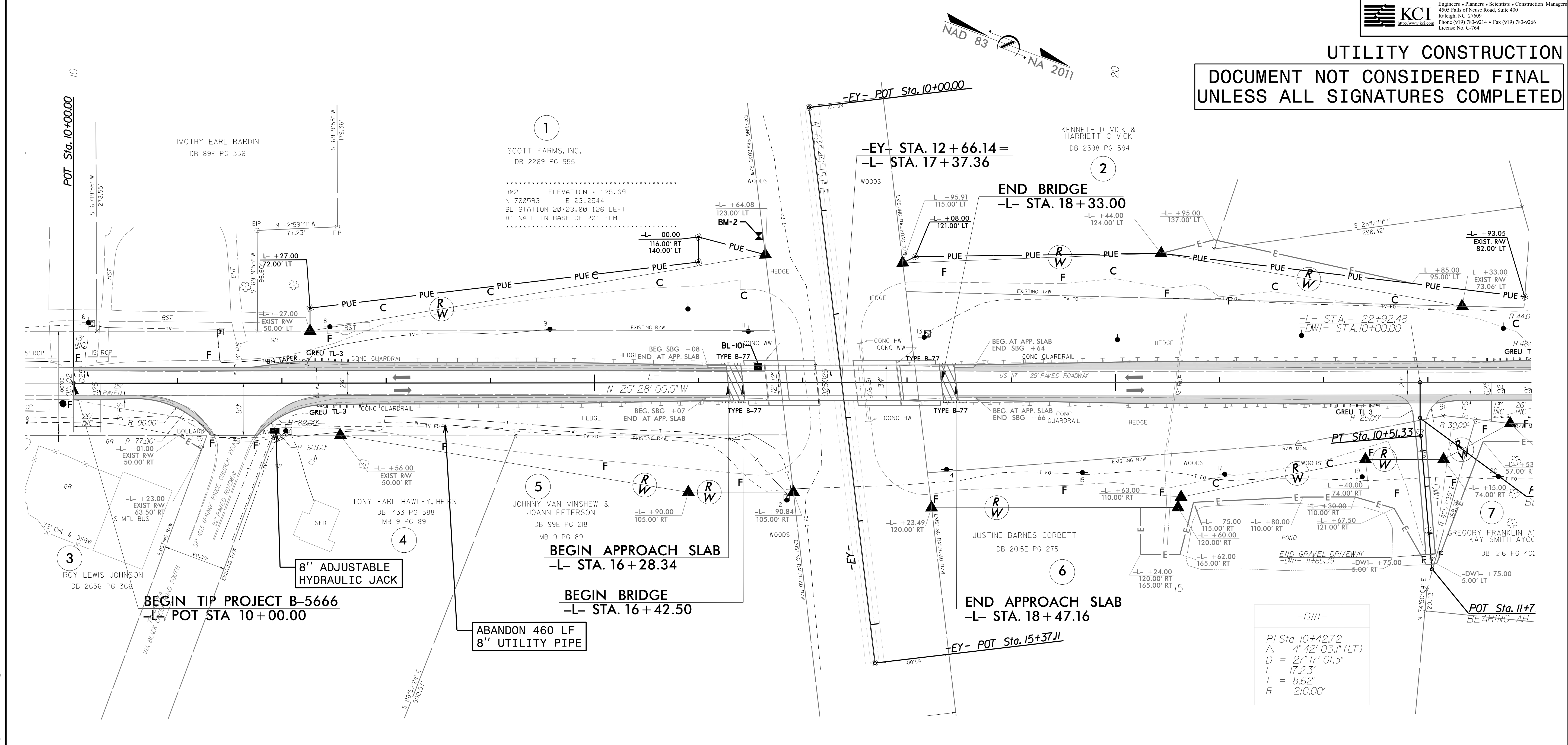
BUTTRESS FOR CAPS									
D	6"	8"	10"	12"	16"	20"	24"	30"	36"
E	6"	8"	8"	10"	1'-1"	1'-4"	1'-8"	2'-4"	2'-11"
F	1'-3"	1'-8"	2'-0"	2'-4"	3'-0"	3'-10"	4'-6"	5'-1"	6'-0"
G	1'-6"	2'-0"	2'-6"	3'-0"	4'-0"	4'-10"	5'-10"	7'-11"	9'-8"

BUTTRESS FOR CAPS DETAIL (PLATE W-5)

5/14/99

PROJECT REFERENCE NO.	SHEET NO.
B-5666	UC-4
DESIGNED BY: DK	
DRAWN BY: CS	
CHECKED BY: MM	
APPROVED BY:	
REVISED:	
NORTH CAROLINA DEPARTMENT OF TRANSPORTATION	UTILITY CONSTRUCTION PLANS ONLY
UTILITIES ENGINEERING SEC. PHONE: (919) 707-6690 FAX: (919) 250-4151	
 KCI	Engineers • Planners • Scientists • Construction Managers 4809 Falls of Neuse Road, Suite 400 Raleigh, NC 27609 Phone (919) 783-9214 • Fax (919) 783-9266 License No. C-764

UTILITY CONSTRUCTION
DOCUMENT NOT CONSIDERED FINAL
UNLESS ALL SIGNATURES COMPLETED



-DWI-
PI Sta 10+42.72
Δ = 4' 42" 03.1" (LT)
D = 27' 17" 01.3"
L = 17.23'
T = 8.62'
R = 210.00'

PROPOSED 175 LB OF DUCTILE IRON
WATER PIPE FITTINGS

05 MAY 2020 10:37 WasteWater-B5666-ut-rdy4_UC04_psh.dgn
 1945.22 8.888888888888889