

Location and Surveys

PROJECT SURVEYOR

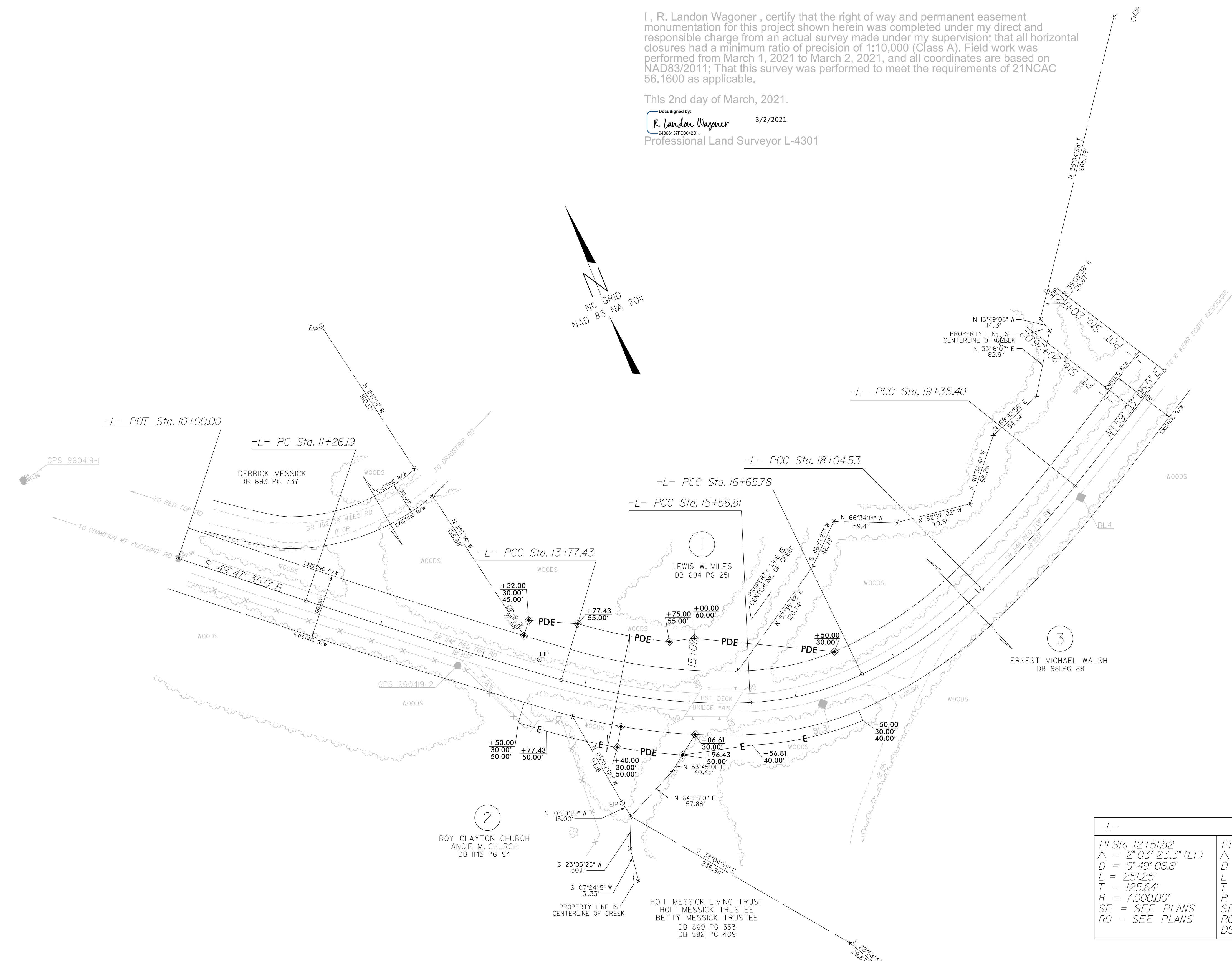


DOCUMENT NOT CONSIDERED FINAL UNLESS ALL SIGNATURES COMPLETED

I, R. Landon Wagoner, certify that the right of way and permanent easement monumentation for this project shown herein was completed under my direct and responsible charge from an actual survey made under my supervision; that all horizontal closures had a minimum ratio of precision of 1:10,000 (Class A). Field work was performed from March 1, 2021 to March 2, 2021, and all coordinates are based on NAD83/2011; That this survey was performed to meet the requirements of 21NCAC 56.1600 as applicable.

This 2nd day of March, 2021.

DocuSigned by:
R. Landon Wagoner 3/2/2021
 94068137FD3042D
 Professional Land Surveyor L-4301



-L-			
PI Sta 12+51.82	PI Sta 14+67.94	PI Sta 16+12.05	PI Sta 17+35.80
$\Delta = 2^{\circ} 03' 23.3''$ (LT)	$\Delta = 18^{\circ} 51' 28.0''$ (LT)	$\Delta = 23^{\circ} 07' 26.6''$ (LT)	$\Delta = 18^{\circ} 55' 43.6''$ (LT)
D = 0' 49' 06.6"	D = 10' 30' 46.8"	D = 21' 13' 14.4"	D = 13' 38' 30.7"
L = 251.25'	L = 179.38'	L = 108.97'	L = 138.76'
T = 125.64'	T = 90.51'	T = 55.24'	T = 70.02'
R = 7,000.00'	R = 545.00'	R = 270.00'	R = 420.00'
SE = SEE PLANS	SE = 0.04	SE = 0.04	SE = 0.04
RO = SEE PLANS	RO = SEE PLANS	RO = SEE PLANS	RO = SEE PLANS
	DS = 40 MPH*	DS = 30 MPH*	

NOTES:

1. IF FURTHER INFORMATION REGARDING PROJECT CONTROL IS NEEDED PLEASE CONTACT THE LOCATION AND SURVEYS UNIT.
2. PROJECT CONTROL WAS ESTABLISHED USING GNSS, THE GLOBAL NAVIGATION SATELLITE SYSTEM.
3. RIGHT OF WAY MONUMENTATION ESTABLISHED _____ TO _____.

REVISIONS

6/2/19

QC: MFB, JCN, WJ, ES, B, rldge Jobs 2019\960419_011\red\RW CONTROL SHEETS\960419_1s_rw04.dgn
 P:\01\19\960419_011\red\RW CONTROL SHEETS\960419_1s_rw04.dgn
 P:\01\19\960419_011\red\RW CONTROL SHEETS\960419_1s_rw04.dgn