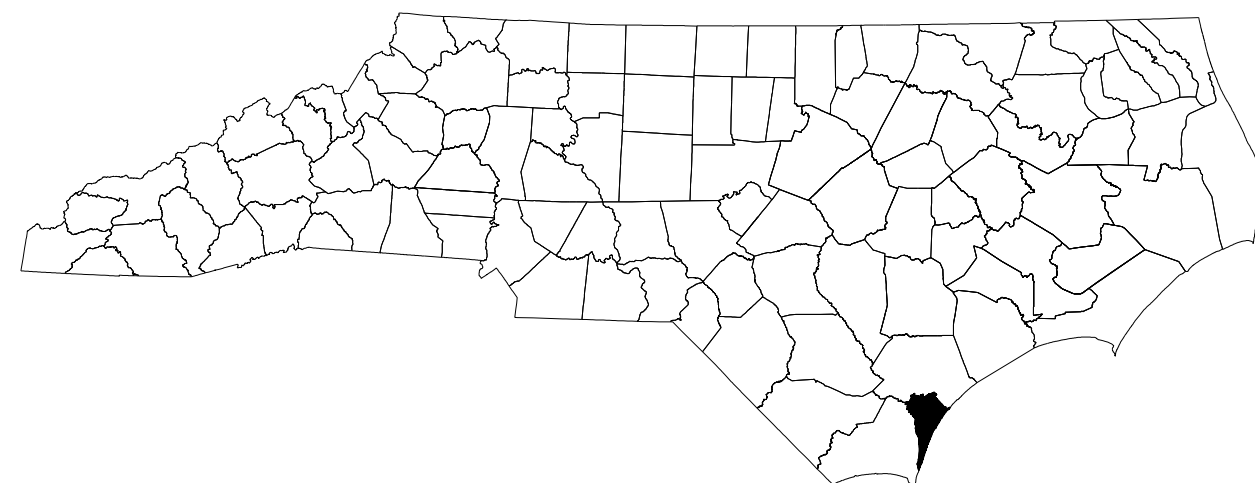


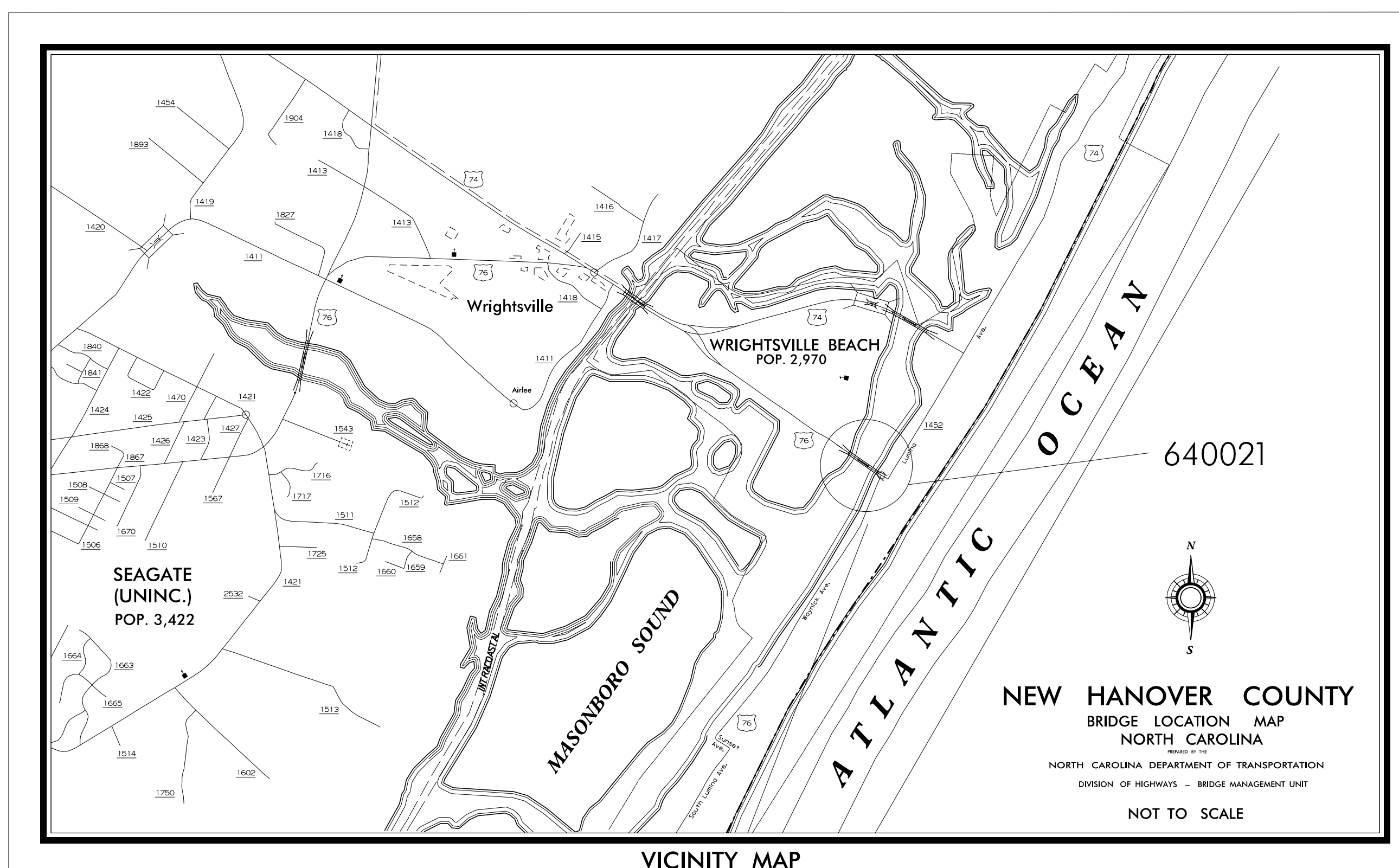
STATE OF NORTH CAROLINA  
DIVISION OF HIGHWAYS

**TRANSPORTATION MANAGEMENT PLAN**

**NEW HANOVER COUNTY**  
**DIVISION 3**



**BRIDGE #640021 – US 76 OVER BANKS CHANNEL**



VICINITY MAP

**INDEX OF SHEETS**

SHEET NO.	TITLE
TMP-1	TITLE SHEET, VICINITY MAP, AND INDEX OF SHEETS
TMP-1A	LIST OF APPLICABLE ROADWAY STANDARD DRAWINGS, AND LEGEND
TMP-2	GENERAL NOTES AND TRAFFIC CONTROL PHASING
TMP-3	TEMPORARY TRAFFIC CONTROL PHASE I DETAIL
TMP-4	TEMPORARY TRAFFIC CONTROL PHASE II DETAIL
TMP-5	TEMPORARY TRAFFIC CONTROL PHASE III DETAIL
TMP-6	TEMPORARY TRAFFIC CONTROL PHASE IV DETAIL
TMP-7	TEMPORARY TRAFFIC CONTROL PHASE V DETAIL

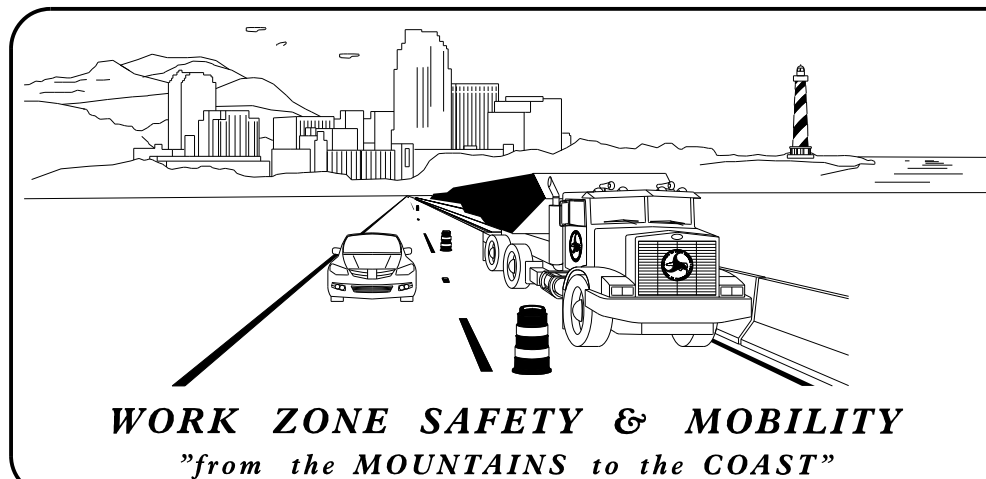
SHEET NO.  
TMP-1

**15BPR.19**

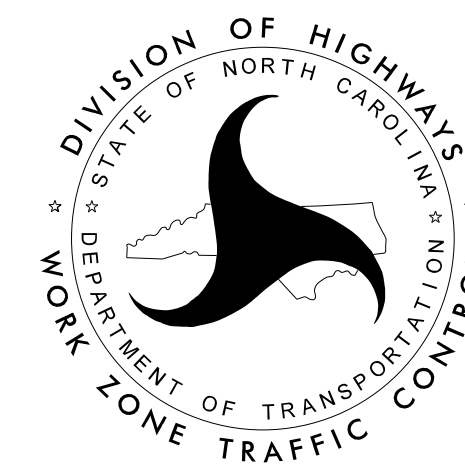
**TRAFFIC MANAGEMENT STRATEGIES**

US 76 BRIDGE #640021 DECK PRESERVATION TO BE PERFORMED UNDER TIME RESTRICTED LANE CLOSURE.

DOCUMENT NOT CONSIDERED FINAL  
UNLESS ALL SIGNATURES COMPLETED



PLANS PREPARED FOR BRIDGE MANAGMENT UNIT  
RALEIGH, NC

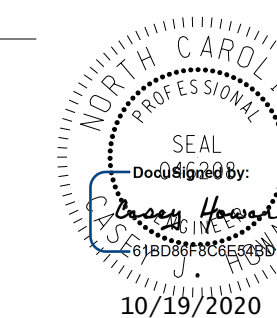


WSP USA Inc.  
434 FAYETTEVILLE STREET  
SUITE 1500  
RALEIGH, NC 27601  
TEL: 1.919.836.4040  
LICENSE NO. F-0165

APPROVED: \_\_\_\_\_

DATE: \_\_\_\_\_

SEAL



**PROJECT:**

10/18/2020  
L:\Raleigh Office Projects\Structures\2018\188906-05\_NCDOT - 640021 New Hanover Co\05 Plans\10 DGN\TCP\200\_005\_15BPR.19\_TMP-1.dgn  
User:JUSM004281

# ROADWAY STANDARD DRAWINGS

THE FOLLOWING ROADWAY STANDARDS AS SHOWN IN "ROADWAY STANDARD DRAWINGS" - N.C. DEPARTMENT OF TRANSPORTATION - RALEIGH, N.C., DATED JANUARY 2018 ARE APPLICABLE TO THIS PROJECT AND BY REFERENCE HEREBY ARE CONSIDERED A PART OF THESE PLANS:

STD. NO.	TITLE
1101.02	TEMPORARY LANE CLOSURES
1101.04	TEMPORARY SHOULDER CLOSURES
1101.11	TRAFFIC CONTROL DESIGN TABLES
1110.01	STATIONARY WORK ZONE SIGNS
1110.02	PORTABLE WORK ZONE SIGNS
1115.01	FLASHING ARROW BOARDS
1130.01	DRUMS
1135.01	CONES
1145.01	BARRICADES
1150.01	FLAGGING DEVICES
1165.01	TRUCK MOUNTED ATTENUATOR
1180.01	SKINNY - DRUMS
1205.01	PAVEMENT MARKINGS - LINE TYPES AND OFFSETS
1205.02	PAVEMENT MARKINGS - TWO LANE AND MULTILANE ROADWAYS
1205.04	PAVEMENT MARKINGS - INTERSECTIONS
1205.05	PAVEMENT MARKINGS - TURN LANES
1205.06	PAVEMENT MARKINGS - LANE DROPS
1205.07	PAVEMENT MARKINGS - PEDESTRIAN CROSSWALKS
1205.08	PAVEMENT MARKINGS - SYMBOLS AND WORD MESSAGES
1205.10	PAVEMENT MARKINGS - SCHOOL AREAS
1205.12	PAVEMENT MARKINGS - BRIDGES
1205.13	PAVEMENT MARKINGS - LANE REDUCTIONS
1250.01	RAISED PAVEMENT MARKERS - INSTALLATION SPACING
1251.01	RAISED PAVEMENT MARKERS - (PERMANENT AND TEMPORARY)

# LEGEND

## GENERAL

- DIRECTION OF TRAFFIC FLOW
- DIRECTION OF PEDESTRIAN TRAFFIC FLOW
- NORTH ARROW
- WORK AREA
- PAVEMENT REMOVAL

## SIGNALS

- EXISTING
- PROPOSED
- TEMPORARY

## PAVEMENT MARKINGS

- EXISTING LINES
- SKIP LINES
- MINI SKIP LINES
- SOLID LINES

## PAVEMENT MARKING SYMBOLS

- PAVEMENT MARKING SYMBOLS
- EXISTING PAVEMENT MARKING SYMBOLS (HOLLOW)
- EXISTING PAVEMENT MARKING SYMBOLS (HOLLOW)

## TRAFFIC CONTROL DEVICES

- BARRICADE (TYPE III)
- CONE
- DRUM
- SKINNY DRUM
- TUBULAR MARKER
- TEMPORARY CRASH CUSHION
- FLASHING ARROW BOARD
- FLAGGER
- LAW ENFORCEMENT
- TRUCK MOUNTED ATTENUATOR (TMA)
- CHANGEABLE MESSAGE SIGN (CMS)
- PEDESTRIAN CHANNELIZING DEVICES (TO BE DETERMINED BY CONTRACTOR)

## TEMPORARY SIGNING

- PORTABLE SIGN
- STATIONARY SIGN
- STATIONARY OR PORTABLE SIGN

## PAVEMENT MARKERS

- CRYSTAL / CRYSTAL
- CRYSTAL / RED
- YELLOW / YELLOW

10/18/2020  
 L:\Raleigh Office Projects\Structures\2018\188906-05 NCDOT - 640021 New Hamover Co\05 Plans\10 DGN\TCP\200\_010\_15BPR\19\_TMP-1A.dgn  
 User:JUSM004281

 WSP USA Inc. 434 FAYETTEVILLE STREET SUITE 1500 RALEIGH, NC 27601 TEL: 1.919.836.4040 LICENSE NO. F-0165	APPROVED: _____ DATE: _____			<b>ROADWAY STANDARD DRAWINGS &amp; LEGEND</b>
	SEAL			

## GENERAL NOTES

THE FOLLOWING GENERAL NOTES APPLY AT ALL TIMES FOR THE DURATION OF THE PROJECT EXCEPT WHEN OTHERWISE NOTED IN THE PLAN OR DIRECTED BY THE ENGINEER.

CHANGES MAY BE REQUIRED WHEN PHYSICAL DIMENSIONS IN THE DETAIL DRAWINGS, STANDARD DETAILS, AND ROADWAY DETAILS ARE NOT ATTAINABLE TO MEET FIELD CONDITIONS OR RESULT IN DUPLICATE OR UNDESIRABLE OVERLAPPING OF DEVICES. MODIFICATION MAY INCLUDE: MOVING, SUPPLEMENTING, COVERING, OR REMOVAL OF DEVICES AS DIRECTED BY THE ENGINEER.

### LANE CLOSURE TIME RESTRICTIONS

A) DO NOT CLOSE OR NARROW TRAVEL LANES AS FOLLOWS:

#### US 76 DAY AND TIME RESTRICTIONS FOR SINGLE LANE CLOSURES

6:00 A.M.-9:00 A.M. MONDAY THRU FRIDAY  
4:00 P.M.-6:00 P.M. MONDAY THRU FRIDAY

#### US 76 DAY AND TIME RESTRICTIONS FOR MULTIPLE LANE CLOSURES

5:00 A.M.-11:30 P.M. MONDAY THRU SUNDAY (EVERYDAY)

#### HOLIDAY & HOLIDAY WEEKEND LANE CLOSURE TIME RESTRICTIONS

B) DO NOT CLOSE OR NARROW TRAVEL LANES DURING HOLIDAYS AND HOLIDAY WEEKENDS AS FOLLOWS:

ALL ROADS

1) FOR ANY UNEXPECTED OCCURRENCE THAT CREATES UNUSUALLY HIGH TRAFFIC VOLUMES, AS DIRECTED BY THE ENGINEER.

2) FOR NEW YEAR'S, BETWEEN THE HOURS OF 6:00 A.M. DECEMBER 31st TO 6:00 P.M. JANUARY 2nd. IF NEW YEAR'S DAY IS ON A FRIDAY, SATURDAY, SUNDAY, OR MONDAY THEN UNTIL 6:00 P.M. THE FOLLOWING TUESDAY.

3) FOR EASTER, BETWEEN THE HOURS OF 6:00 A.M. THURSDAY AND 6:00 P.M. MONDAY.

4) FOR MEMORIAL DAY, BETWEEN THE HOURS OF 6:00 A.M. FRIDAY TO 6:00 P.M. TUESDAY.

5) FOR INDEPENDENCE DAY, BETWEEN THE HOURS OF 6:00 A.M. THE DAY BEFORE INDEPENDENCE DAY AND 6:00 P.M. THE DAY AFTER INDEPENDENCE DAY. IF INDEPENDENCE DAY IS ON A FRIDAY, SATURDAY, SUNDAY OR MONDAY; THEN BETWEEN THE HOURS OF 6:00 A.M. THE THURSDAY BEFORE INDEPENDENCE DAY AND 6:00 P.M. THE TUESDAY AFTER INDEPENDENCE DAY.

6) FOR LABOR DAY, BETWEEN THE HOURS OF 6:00 A.M. FRIDAY AND 6:00 P.M. TUESDAY.

7) FOR THANKSGIVING DAY, BETWEEN THE HOURS OF 6:00 A.M. TUESDAY TO 6:00 P.M. MONDAY.

8) FOR CHRISTMAS, BETWEEN THE HOURS OF 6:00 A.M. THE FRIDAY BEFORE THE WEEK OF CHRISTMAS DAY AND 6:00 P.M. THE FOLLOWING TUESDAY AFTER THE WEEK OF CHRISTMAS.

### SPECIAL EVENT-LANE CLOSURE TIME RESTRICTIONS

C) DO NOT CLOSE OR NARROW TRAVEL LANES DURING THE FOLLOWING SPECIAL EVENTS, FROM 4 HOURS BEFORE TO 4 HOURS AFTER THE EVENT AS DIRECTED BY THE ENGINEER:

- 1) SATURDAY FEBRUARY 13, 2021 & FEBRUARY 12, 2022 WRIGHTSVILLE BEACH VALENTINE RUN: 5K & 10K
- 2) SATURDAY FEBRUARY 27, 2021 & FEBRUARY 26 2022 WRIGHTSVILLE BEACH MARATHON
- 3) FRIDAY THRU SATURDAY APRIL 23-25, 2021 & APRIL 29 - MAY 1, 2022 CAROLINA CUP SUP RACE
- 4) SATURDAY SEPTEMBER 25, 2021 & SEPTEMBER 17, 2022 YMCA TRIATHLON
- 5) SATURDAY OCTOBER 9, 2021 & OCTOBER 8, 2022 WUMC SON RUN 5K

### SPECIAL EVENT-LANE CLOSURE TIME RESTRICTIONS (CONT'D.)

- 6) SATURDAY OCTOBER 23, 2021 & OCTOBER 15, 2022 IRONMAN 70.3 B2B
- 7) SATURDAY NOVEMBER 6, 2021 WALK TO END ALZHEIMERS
- 8) SUNDAY NOVEMBER 7, 2021 AFSP WALK FOR SUICIDE PREVENTION
- 9) SATURDAY NOVEMBER 13, 2021 SEASIDE SHUFFLE
- 10) THURSDAY NOVEMBER 25, 2021 THANKSGIVING TURKEY TROT
- 11) SATURDAY NOVEMBER 27, 2021 NC HOLIDAY FLOTILLA
- 12) SATURDAY DECEMBER 11, 2021 JINGLE BELL RUN

THE CONTRACTOR SHALL BE AWARE OF OTHER EVENTS THAT MAY OCCUR AND CHECK WITH THE DIVISION ENGINEER AND CITY OF WRIGHTSVILLE BEACH OF ANY ADDITIONS DATES PRIOR START OF CONSTRUCTION.

### LANE AND SHOULDER CLOSURE REQUIREMENTS

D) LANE CLOSURES ARE REQUIRED WHEN PERSONNEL AND/OR EQUIPMENT ARE WORKING WITHIN ANY PORTION OF A TRAVEL LANE. CONDUCT THE WORK SO THAT ALL PERSONNEL AND/OR EQUIPMENT REMAIN WITHIN THE CLOSED TRAVEL LANE.

E) INSTALL ALL LANE CLOSURES ACCORDING TO THE PLANS, ROADWAY STANDARD DRAWINGS (1101.02), OR AS DIRECTED BY THE ENGINEER.

F) REMOVE LANE CLOSURE DEVICES FROM THE LANE WHEN WORK IS NOT BEING PERFORMED BEHIND THE LANE CLOSURE OR WHEN A LANE CLOSURE IS NO LONGER NEEDED OR AS DIRECTED BY THE ENGINEER.

G) INSTALL LANE CLOSURES WITH THE TRAFFIC FLOW, BEGINNING WITH DEVICES ON THE UPSTREAM SIDE OF TRAFFIC. REMOVE LANE CLOSURES AGAINST THE TRAFFIC FLOW, BEGINNING WITH DEVICES ON THE DOWNSTREAM SIDE OF TRAFFIC.

H) WHEN PERSONNEL AND/OR EQUIPMENT ARE WORKING WITHIN 15 FT OF AN OPEN TRAVEL LANE, CLOSE THE NEAREST OPEN SHOULDER USING ROADWAY STANDARD DRAWING NO. 1101.04 UNLESS THE WORK AREA IS PROTECTED BY BARRIER OR GUARDRAIL OR A LANE CLOSURE IS INSTALLED.

I) WHEN PERSONNEL AND/OR EQUIPMENT ARE WORKING ON THE SHOULDER ADJACENT TO AN UNDIVIDED FACILITY AND WITHIN 5 FT OF AN OPEN TRAVEL LANE, CLOSE THE NEAREST OPEN TRAVEL LANE UNLESS THE WORK AREA IS PROTECTED BY BARRIER OR GUARDRAIL.

J) WHEN PERSONNEL AND/OR EQUIPMENT ARE WORKING ON THE SHOULDER ADJACENT TO A DIVIDED FACILITY AND WITHIN 10 FT OF AN OPEN TRAVEL LANE, CLOSE THE NEAREST OPEN TRAVEL LANE UNLESS THE WORK AREA IS PROTECTED BY BARRIER OR GUARDRAIL.

K) UNLESS OTHERWISE SHOWN IN THE PLANS, PLACE ARROW PANELS ON THE ROADWAY SHOULDER. IF SHOULDERS DO NOT EXIST, PLACE ARROW PANELS WITHIN THE MERGE TAPER BEHIND THE CHANNELIZING DEVICES OF THE LANE CLOSURE. IF NEEDED, EXTEND LANE CLOSURES TO PROVIDE STOPPING SIGHT DISTANCE TO THE ARROW PANEL (REFER TO ROADWAY STANDARD DRAWING 1101.11 SHEET 2).

L) PLACE LANE CLOSURE DRUMS IN TAPERS AT A MAXIMUM SPACING EQUAL IN FEET TO THE POSTED SPEED LIMIT (MPH). ALONG BUFFER SPACES AND WORK AREAS SPACE DRUMS AT A MAXIMUM SPACING EQUAL IN FEET TO TWICE THE POSTED SPEED LIMIT (MPH). IN ALL CASES, CHANNELIZING DEVICES ARE TO BE SPACED IN SUCH A MANNER AS TO POSITIVELY ACHIEVE THE INTENDED VISUAL CHANNELIZATION. CHANNELIZING DEVICES SHOULD BE Laterally OFFSET 3 FT INSIDE THE CLOSED LANE AS ROOM PERMITS.

### ROAD CLOSURES

M) PROVIDE SIGNING AND DEVICES FOR ROAD CLOSURES ACCORDING TO THE TRAFFIC MANAGEMENT PLAN. COVER OR REMOVE ALL SIGNS AND DEVICES FOR ROAD CLOSURES WHEN NOT IN EFFECT.

N) PROVIDE OFFSITE DETOUR ROUTE SIGNING AS SHOWN IN THE TRAFFIC MANAGEMENT PLAN. COVER OR REMOVE OFFSITE DETOUR SIGNING WHEN THE DETOUR IS NOT IN OPERATION. ALL OFFSITE DETOUR ROUTES MUST BE APPROVED BY THE ENGINEER PRIOR TO IMPLEMENTING.

O) WHEN CLOSING A ROADWAY OR DRIVEWAY PLACE TYPE III BARRICADES COMPLETELY ACROSS THE ROADWAY OR FROM CURB TO CURB. ATTACH BARRICADE MOUNTED "ROAD CLOSED" SIGN R11-2 AT ALL CLOSURE LOCATIONS. IF LOCAL TRAFFIC IS TO BE MAINTAINED STAGGER THE BARRICADES TO ALLOW ACCESS.

P) INSTALL SIGNS BEFORE BARRICADES WHEN CLOSING A ROADWAY TO TRAFFIC. REMOVE BARRICADES BEFORE SIGNS WHEN OPENING A ROADWAY TO TRAFFIC. INSTALL/REMOVE ROAD CLOSURE SIGNS AND BARRICADES IN A CONTINUOUS OPERATION AND WITHIN THE SAME CALENDAR DAY.

### PAVEMENT MARKINGS AND MARKERS

Q) UPON COMPLETION OF ALL OTHER CONSTRUCTION OPERATIONS INSTALL PAVEMENT MARKINGS AND PAVEMENT MARKERS ON THE FINAL SURFACE AS FOLLOWS:

ROAD NAME	MARKING	PAVEMENT MARKER
US 74, US 76	POLYUREA/COLD APPL.	PERMANENT RAISED

R) TIE PROPOSED PAVEMENT MARKING LINES TO EXISTING PAVEMENT MARKING LINES.

S) TYPE III COLD APPLIED PLASTIC MAY BE USED IN LIEU OF TYPE II COLD APPLIED PLASTIC. IF TYPE III COLD APPLIED PLASTIC IS USED, IT SHALL BE PAID FOR USING THE TYPE II COLD APPLIED PLASTIC PAY ITEM.

### MISCELLANEOUS

T) USE LAW ENFORCEMENT TO MAINTAIN TRAFFIC THROUGH THE WORK AREA AND/OR INTERSECTIONS AS DIRECTED BY THE ENGINEER. LOCATIONS SHOWN IN THE PLANS ARE APPROXIMATE AND MAY BE REVISED AS THE OFFICER OR THE ENGINEER DEEM NECESSARY.

U) ALL DIMENSIONS AND STATIONS IN THE TRAFFIC MANAGEMENT PLAN AND PHASING ARE APPROXIMATE (+/-); FIELD ADJUST AS NECESSARY OR AS DIRECTED BY THE ENGINEER.

V) MAINTAIN DRIVEWAY ACCESS AT ALL TIMES, UNLESS OTHERWISE DIRECTED BY ENGINEER.


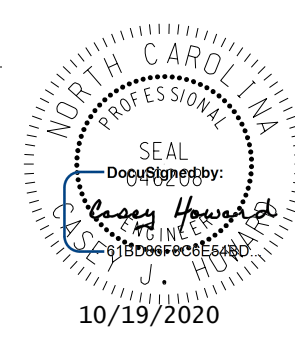

W) ENSURE THE OVERSIZE/OVERWEIGHT PERMIT UNIT (919) 733-4740 HAS BEEN ADVISED OF THE ONGOING TRAFFIC OPERATIONS THROUGH THE DIVISION OFFICE.

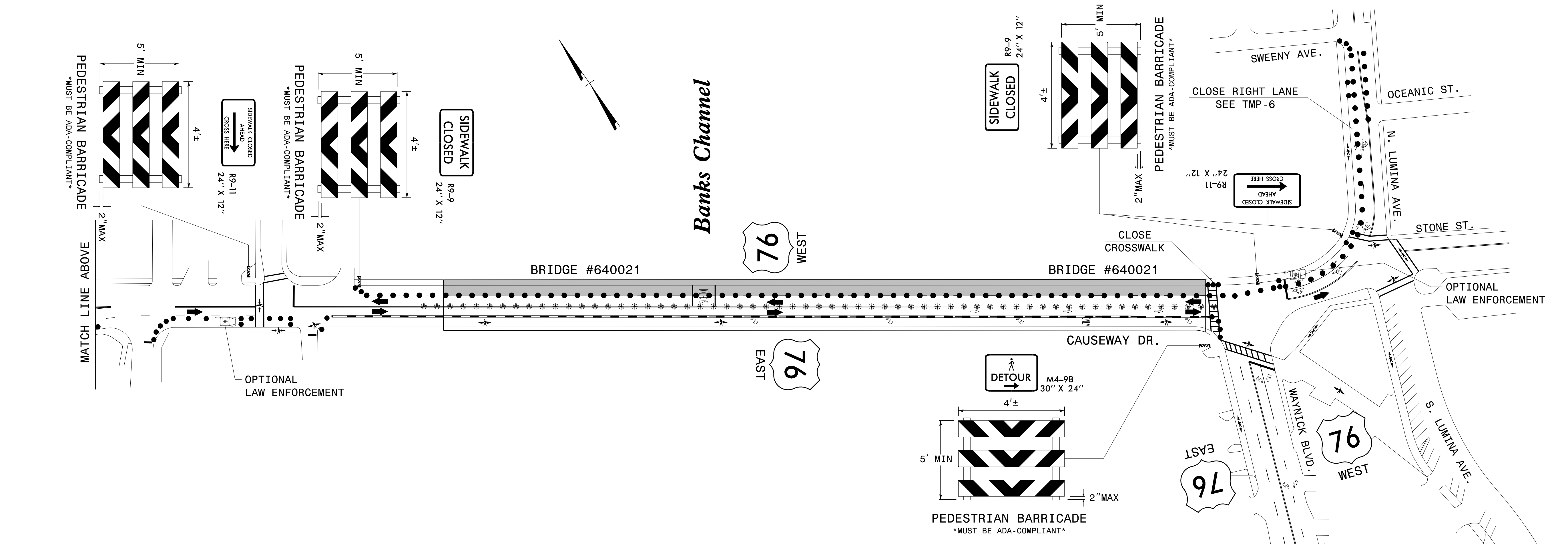
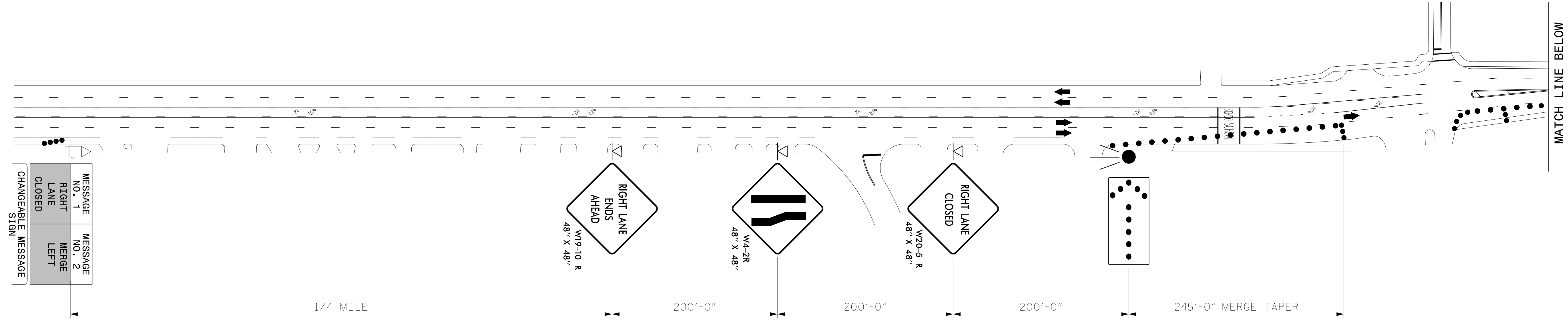
## TRAFFIC CONTROL PHASING

PERFORM BRIDGE #640021 DECK OPERATIONS USING LANE CLOSURES AS FOLLOWS:

FOR SINGLE RIGHT OR LEFT LANE CLOSURES REFER TO SHEET TMP 3-6.

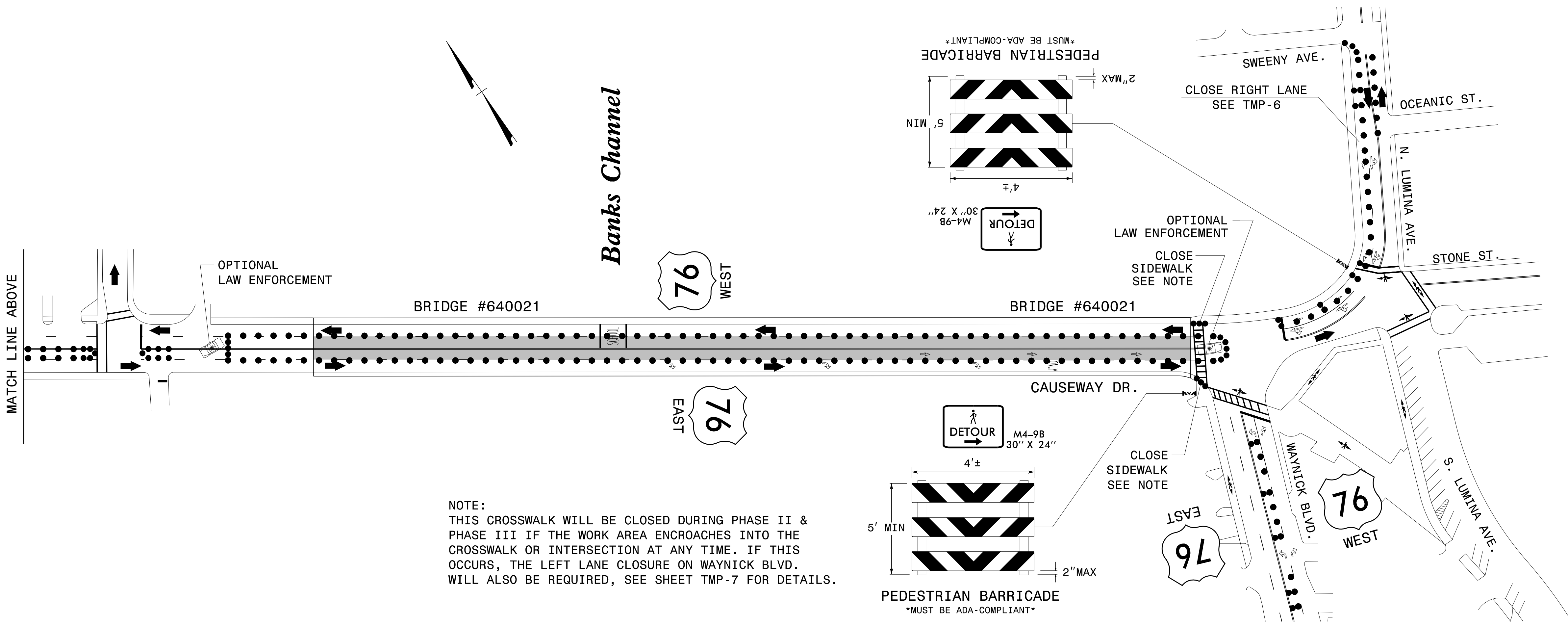
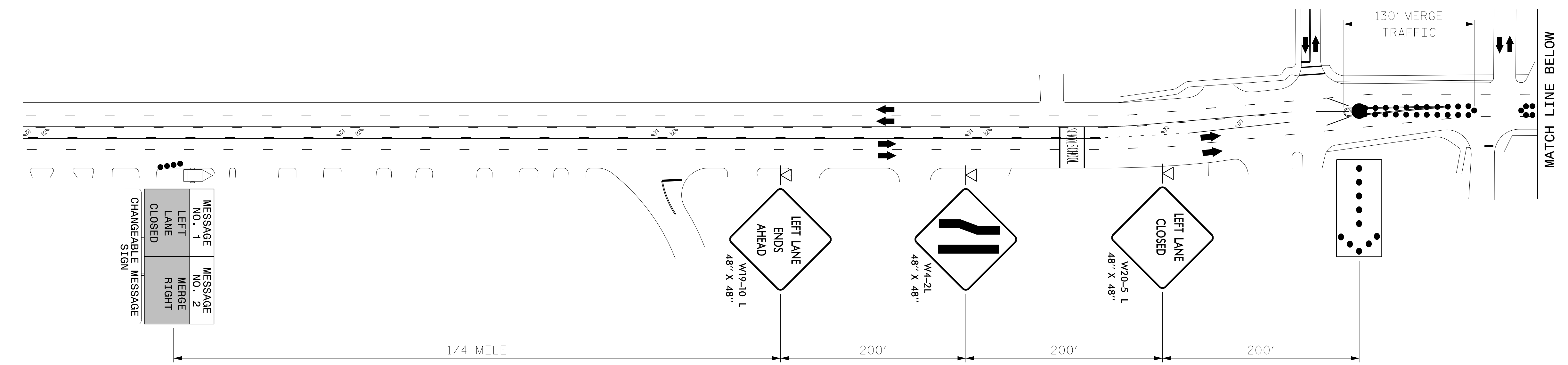
10/18/2020 L:\Raleigh Office Projects\Structure\2018\188906-05 NCDOT - 640021 New Hanover Co\05 Plans\10 DGN\TCP\200\_015\_15BPR\19\_TMP-2.dgn User:JUSM004281

 <p><b>WSP USA Inc.</b> 434 FAYETTEVILLE STREET SUITE 1500 RALEIGH, NC 27601 TEL: 1.919.836.4040 LICENSE NO. F-0165</p>	APPROVED: _____  DATE: _____  SEAL			GENERAL NOTES AND TRAFFIC CONTROL PHASING
DOCUMENT NOT CONSIDERED FINAL UNLESS ALL SIGNATURES COMPLETED				




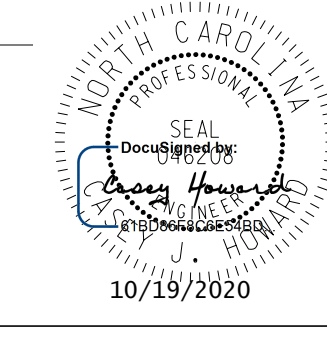

10/18/2020  
 L:\Raleigh Office Projects\Structures\2018\188906-05 NCDOT - 640021 New Hanover Co\05 Plans\10 DGN\TCP\200\_025\_15BPR\19\_TMP-3.dgn  
 User:JUSM004281

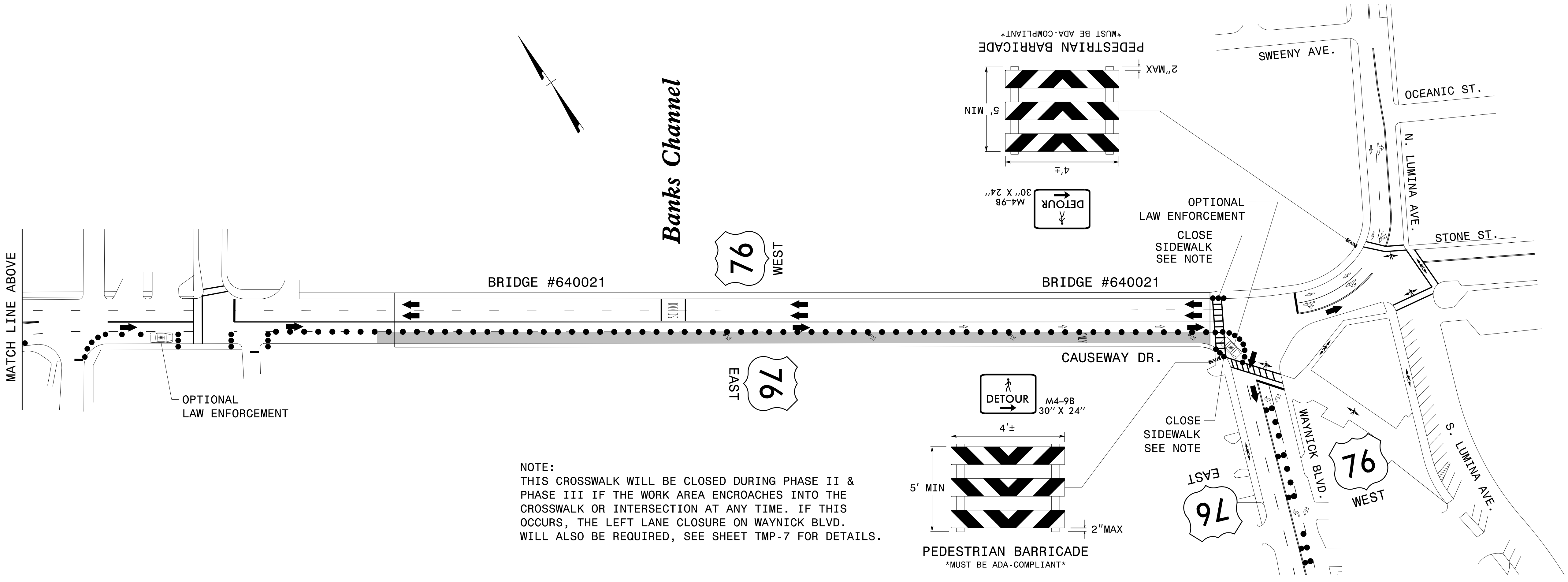
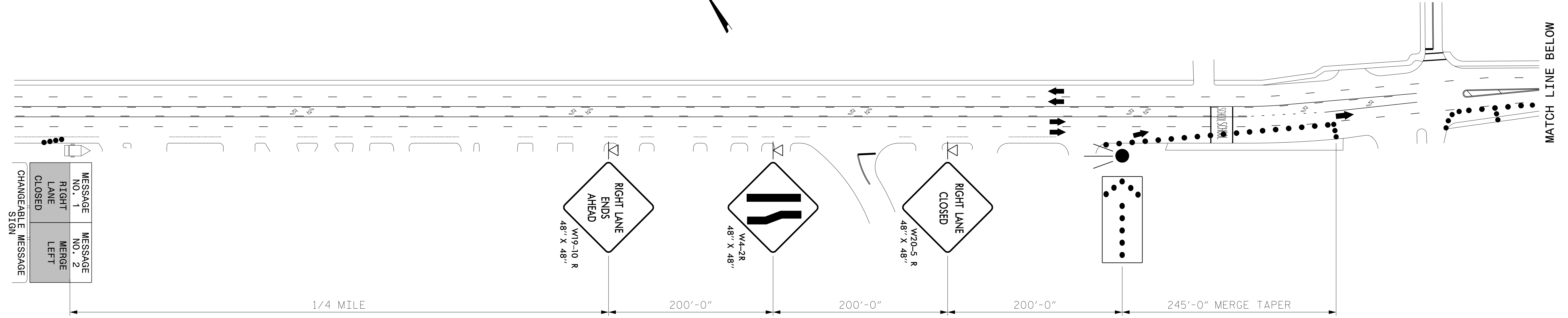
 WSP USA Inc. 434 FAYETTEVILLE STREET SUITE 1500 RALEIGH, NC 27601 TEL: 1.919.836.4040 LICENSE NO. F-0165	APPROVED: _____ DATE: _____ SEAL			PHASE I US 76 WEST CAUSEWAY DRIVE RIGHT LANE CLOSURE
	DOCUMENT NOT CONSIDERED FINAL UNLESS ALL SIGNATURES COMPLETED			



NOTE:  
 THIS CROSSWALK WILL BE CLOSED DURING PHASE II &  
 PHASE III IF THE WORK AREA ENCLOSES INTO THE  
 CROSSWALK OR INTERSECTION AT ANY TIME. IF THIS  
 OCCURS, THE LEFT LANE CLOSURE ON WANTICK BLVD.  
 WILL ALSO BE REQUIRED, SEE SHEET TMP-7 FOR DETAILS.

10/18/2020  
 L:\Raleigh Office Projects\Structures\2018\188906-05 NCDOT - 640021 New Hanover Co\05 Plans\10 DGN\TCP\200\_030\_15BPR\19\_TMP-4.dgn  
 User:JUSM004281

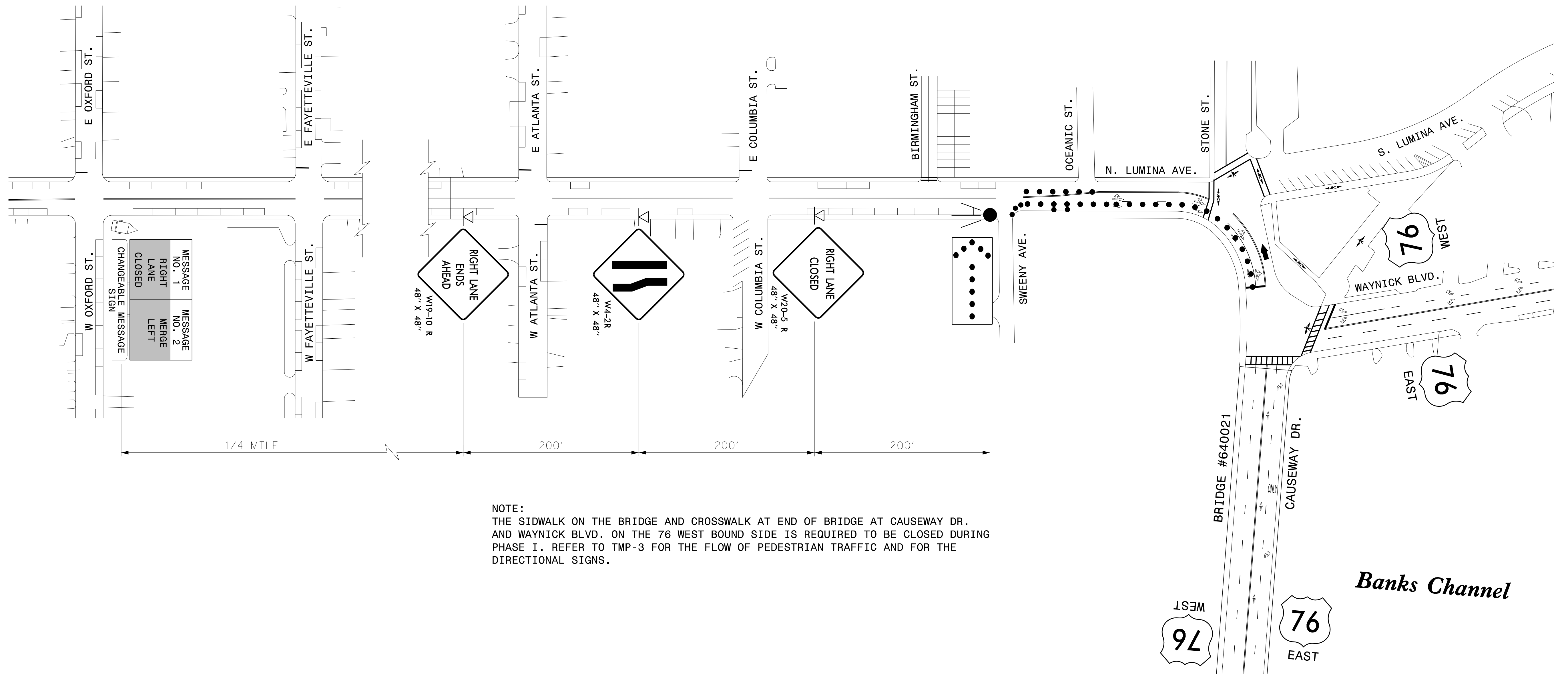
 WSP USA Inc. 434 FAYETTEVILLE STREET SUITE 1500 RALEIGH, NC 27601 TEL: 1.919.836.4040 LICENSE NO. F-0165	APPROVED: _____ DATE: _____ SEAL			PHASE II US 76 EAST/US 76 WEST CAUSEWAY DRIVE LEFT LANE CLOSURE
	DOCUMENT NOT CONSIDERED FINAL UNLESS ALL SIGNATURES COMPLETED			



NOTE:  
 THIS CROSSWALK WILL BE CLOSED DURING PHASE II & PHASE III IF THE WORK AREA ENCROACHES INTO THE CROSSWALK OR INTERSECTION AT ANY TIME. IF THIS OCCURS, THE LEFT LANE CLOSURE ON WAYNICK BLVD. WILL ALSO BE REQUIRED, SEE SHEET TMP-7 FOR DETAILS.


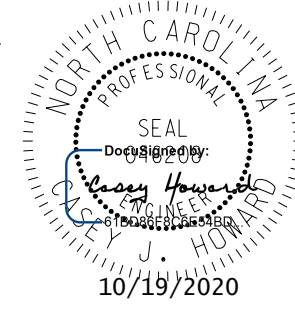

10/18/2020 L:\Raleigh Office Projects\Structures\2018\188906-05 NCDOT - 640021 New Hanover Co\05 Plans\10 DGN\TCP\200\_035\_15BPR\19\_TMP-5.dgn User:JUSM004281

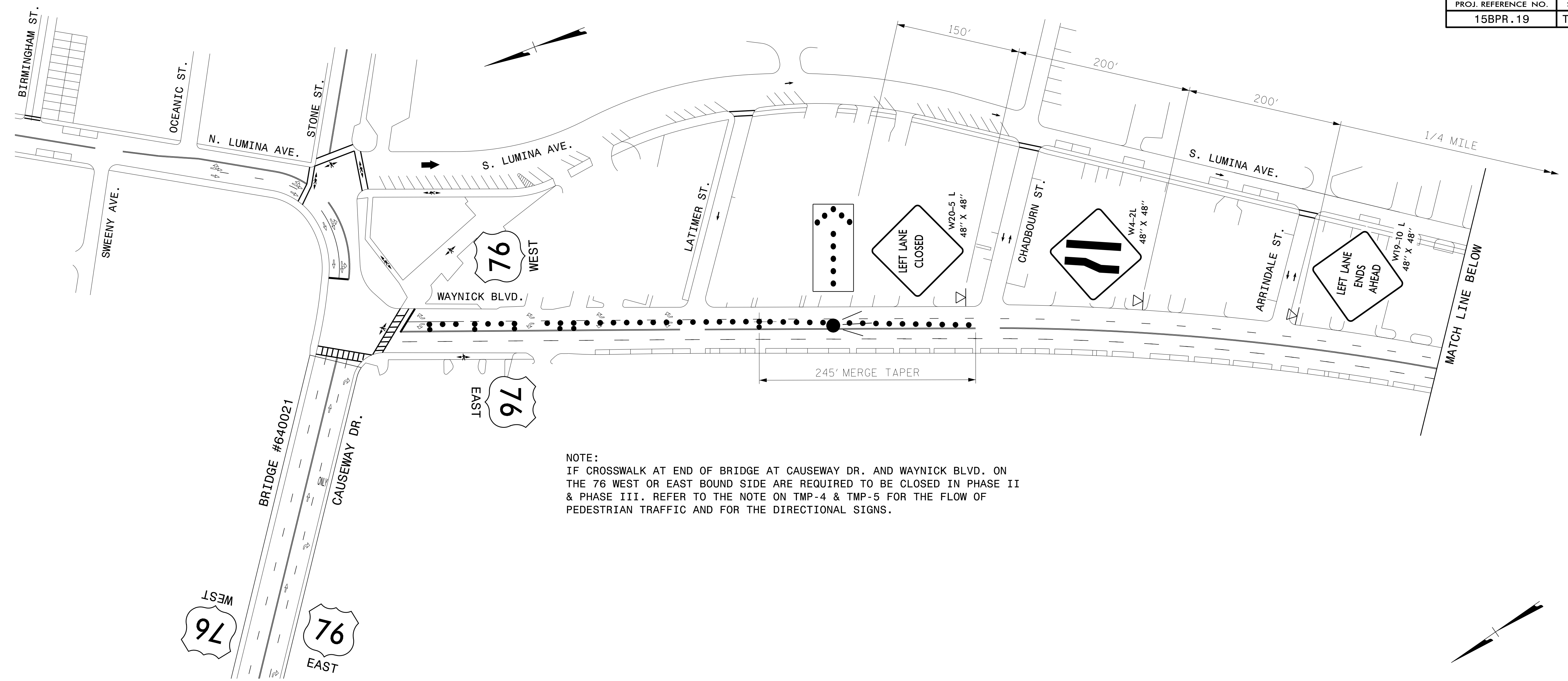
<p>WSP USA Inc.                  434 FAYETTEVILLE STREET                  SUITE 1500                  RALEIGH, NC 27601                  TEL: 1.919.836.4040                  LICENSE NO. F-0165</p>	APPROVED: _____ DATE: _____ SEAL			PHASE III US 76 EAST CAUSEWAY DRIVE RIGHT LANE CLOSURE
	DOCUMENT NOT CONSIDERED FINAL UNLESS ALL SIGNATURES COMPLETED			



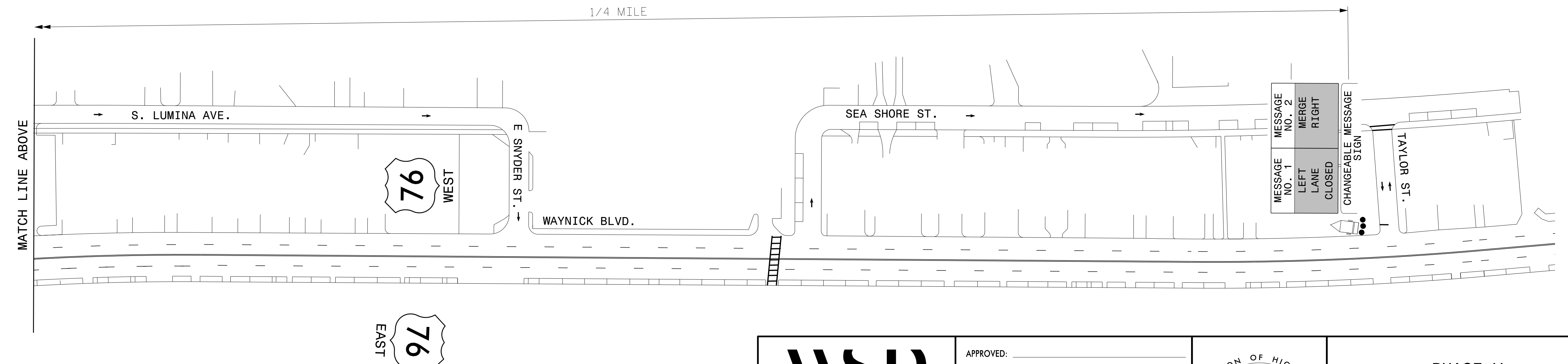
**NOTE:**  
 THE SIDEWALK ON THE BRIDGE AND CROSSWALK AT END OF BRIDGE AT CAUSEWAY DR. AND WAYNICK BLVD. ON THE 76 WEST BOUND SIDE IS REQUIRED TO BE CLOSED DURING PHASE I. REFER TO TMP-3 FOR THE FLOW OF PEDESTRIAN TRAFFIC AND FOR THE DIRECTIONAL SIGNS.

10/18/2020  
 L:\Raleigh Office Projects\Structures\2018\188906-05 NCDOT - 640021 New Hanover Co\05 Plans\10 DGN\TCP\200\_040\_15BPR\19\_TMP-6.dgn  
 User:JUSM004281

 WSP USA Inc. 434 FAYETTEVILLE STREET SUITE 1500 RALEIGH, NC 27601 TEL: 1.919.836.4040 LICENSE NO. F-0165	APPROVED: _____ DATE: _____			PHASE IV N. LUMINA AVE. RIGHT LANE CLOSURE
	SEAL			



NOTE:  
 IF CROSSWALK AT END OF BRIDGE AT CAUSEWAY DR. AND WAYNICK BLVD. ON THE 76 WEST OR EAST BOUND SIDE ARE REQUIRED TO BE CLOSED IN PHASE II & PHASE III. REFER TO THE NOTE ON TMP-4 & TMP-5 FOR THE FLOW OF PEDESTRIAN TRAFFIC AND FOR THE DIRECTIONAL SIGNS.



**wsp**

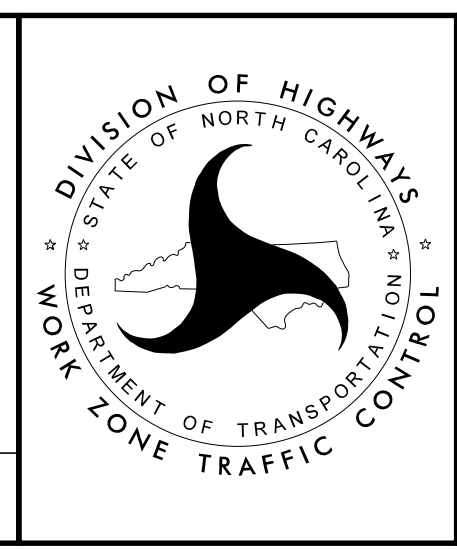
WSP USA Inc.  
 434 FAYETTEVILLE STREET  
 SUITE 1500  
 RALEIGH, NC 27601  
 TEL: 1.919.836.4040  
 LICENSE NO. F-0165

APPROVED: \_\_\_\_\_  
 DATE: \_\_\_\_\_

SEAL

*Professional Engineer Seal*  
 NORTH CAROLINA PROFESSIONAL ENGINEER  
 SEAL  
 DOCUMENTED BY: \_\_\_\_\_  
 10/19/2020

**DOCUMENT NOT CONSIDERED FINAL  
 UNLESS ALL SIGNATURES COMPLETED**



PHASE V  
 US 76 WEST  
 WAYNICK BLVD.  
 LEFT LANE CLOSURE