

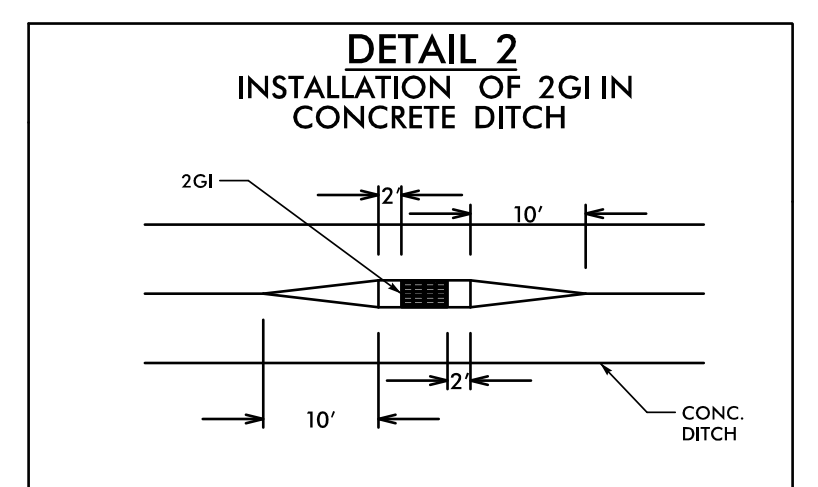
8/17/99

-I26- CURVE DATA

Pls Sta 487+91.25	PI Sta 488+92.02	Pls Sta 489+92.91
$\theta_s = 4' 30'' 00.0''$	$\Delta = 0' 03'' 00.0''$ (LT)	$\theta_s = 4' 30'' 00.0''$
$L_s = 300.00'$	$D = 3' 00'' 00.0''$	$L_s = 300.00'$
$LT = 200.06'$	$L = 1.67'$	$LT = 200.06'$
$ST = 100.06'$	$T = 0.83'$	$ST = 100.06'$
	$R = 1,909.86'$	

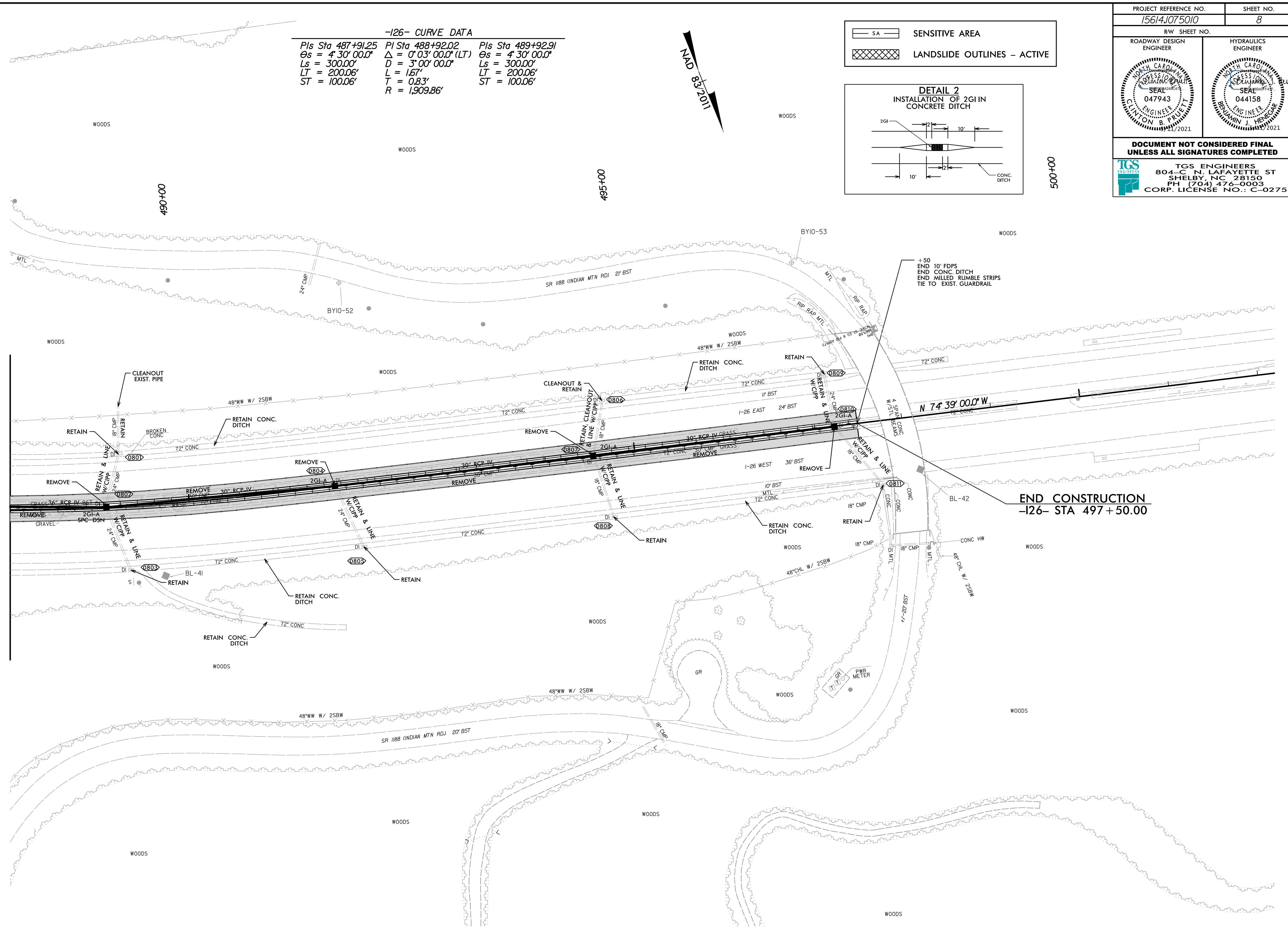


SA SENSITIVE AREA
 LANDSLIDE OUTLINES - ACTIVE



PROJECT REFERENCE NO. 15614.1075010	SHEET NO. 8
RW SHEET NO.	HYDRAULICS ENGINEER
ROADWAY DESIGN ENGINEER	SEAL 047943
DOCUMENT NOT CONSIDERED FINAL UNLESS ALL SIGNATURES COMPLETED	
TGS ENGINEERS 804-C N. LAFAYETTE ST SHELBY, NC 28150 PH (704) 476-0003 CORP. LICENSE NO.: C-0275	

**MATCH LINE STA. -I26- 488+00
MATCH TO SHEET NO. 7**



**END CONSTRUCTION
-I26- STA 497+50.00**

REVISIONS

4/8/2021
X:\NC\DOT\I-26 Howard Gap Rd Rehab\Roadway\Project\I-26 Howard Gap_Rdy_psh_08.dgn
User:cburgett