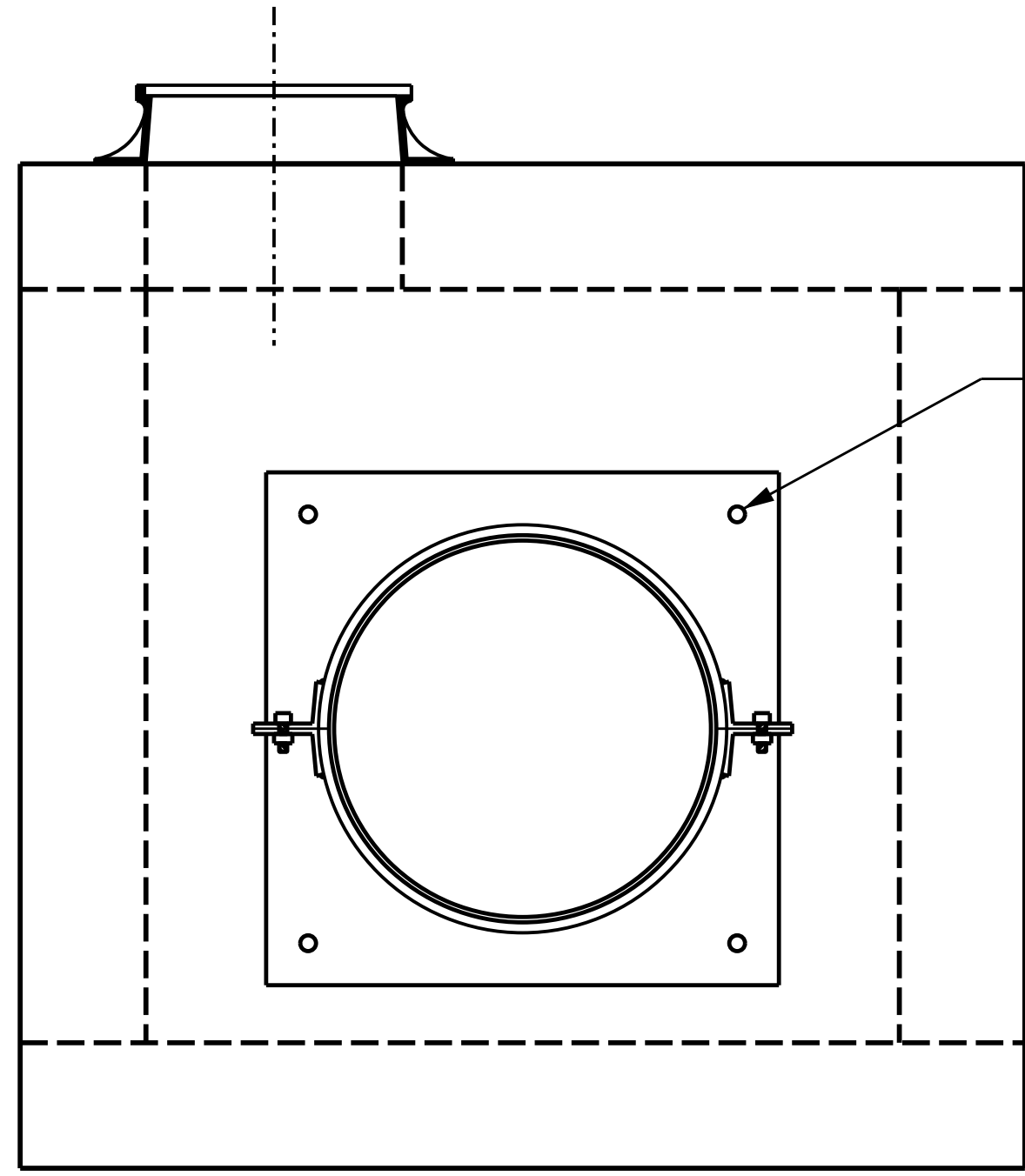


DOCUMENT NOT CONSIDERED FINAL
UNLESS ALL SIGNATURES COMPLETED

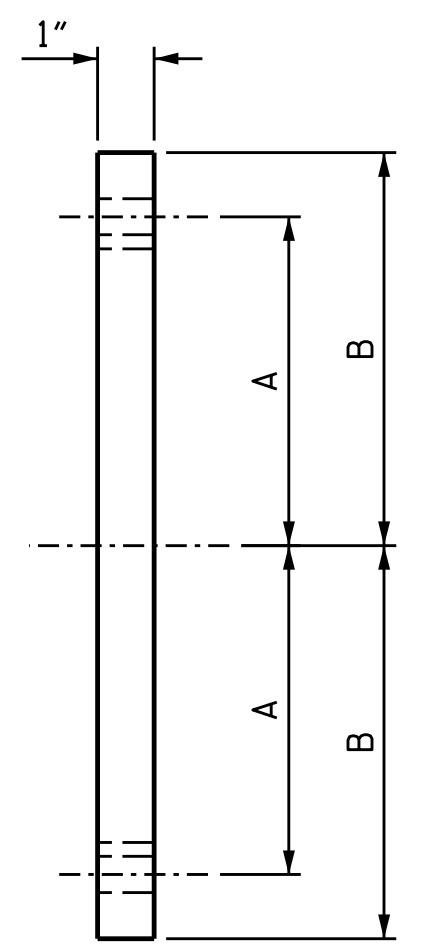
IGS ENGINEERS
706 HILLSBOROUGH STREET
SUITE 200
RALEIGH, NC 27603
PH (919) 773-8887
CORP. LICENSE NO.: C-0275

NOTES

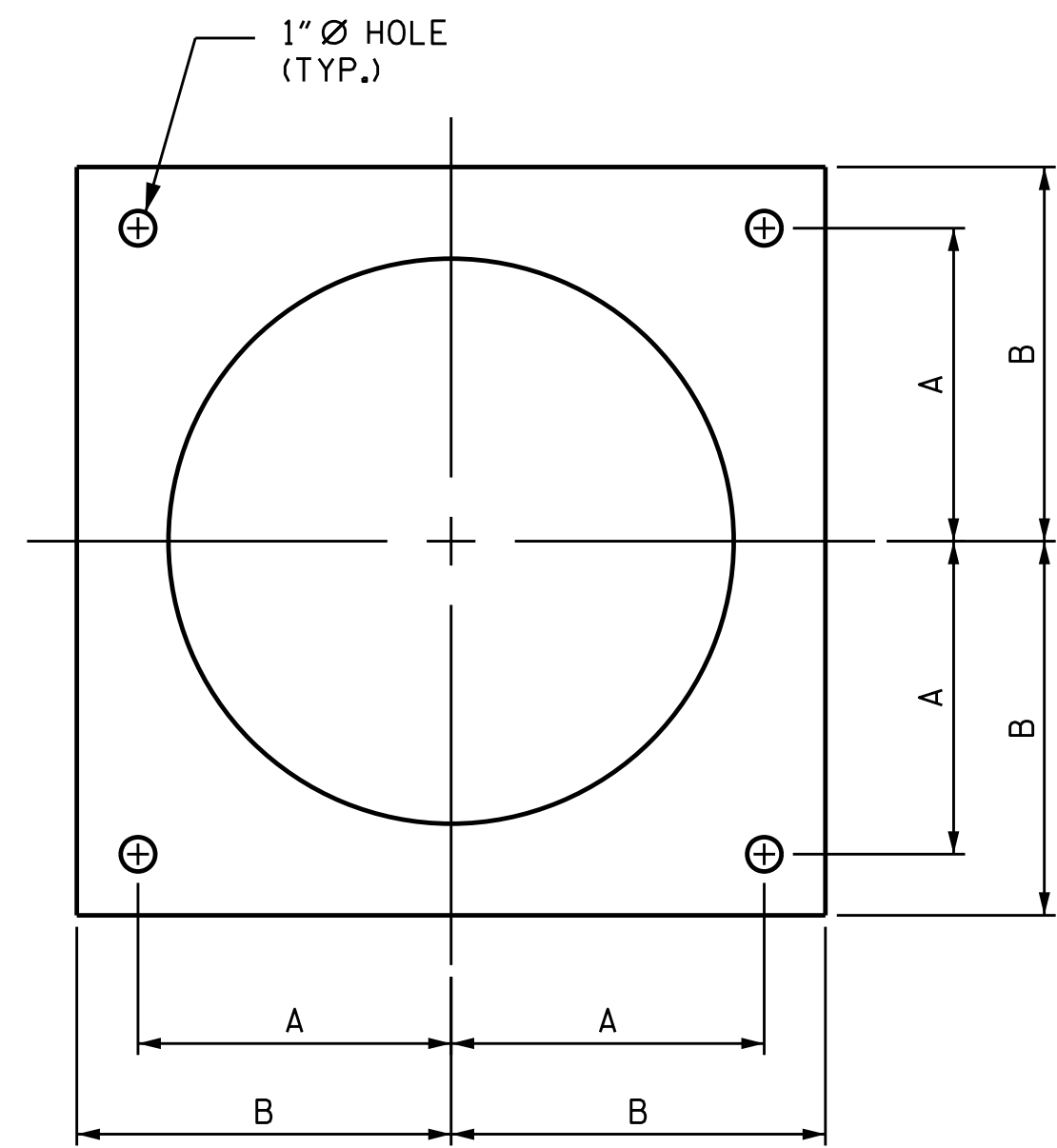
- MOUNTING PLATE SHALL BE AASHTO M270 GRADE 36.
- MOUNTING PLATE SURFACES SHALL BE SMOOTH AND STRAIGHT.
- ADHESIVELY ANCHORED BOLTS SHALL BE INSTALLED IN ACCORDANCE WITH THE MANUFACTURERS GUIDELINES.
- FOR SPECIAL DESIGN PIPE CONNECTION, SEE SPECIAL PROVISIONS.
- ADHESIVELY ANCHORED BOLTS SHALL BE LEVEL 1 FIELD TESTED AND THE YIELD LOAD OF THE 7/8" Ø BOLT SHALL BE 4 KIPS.



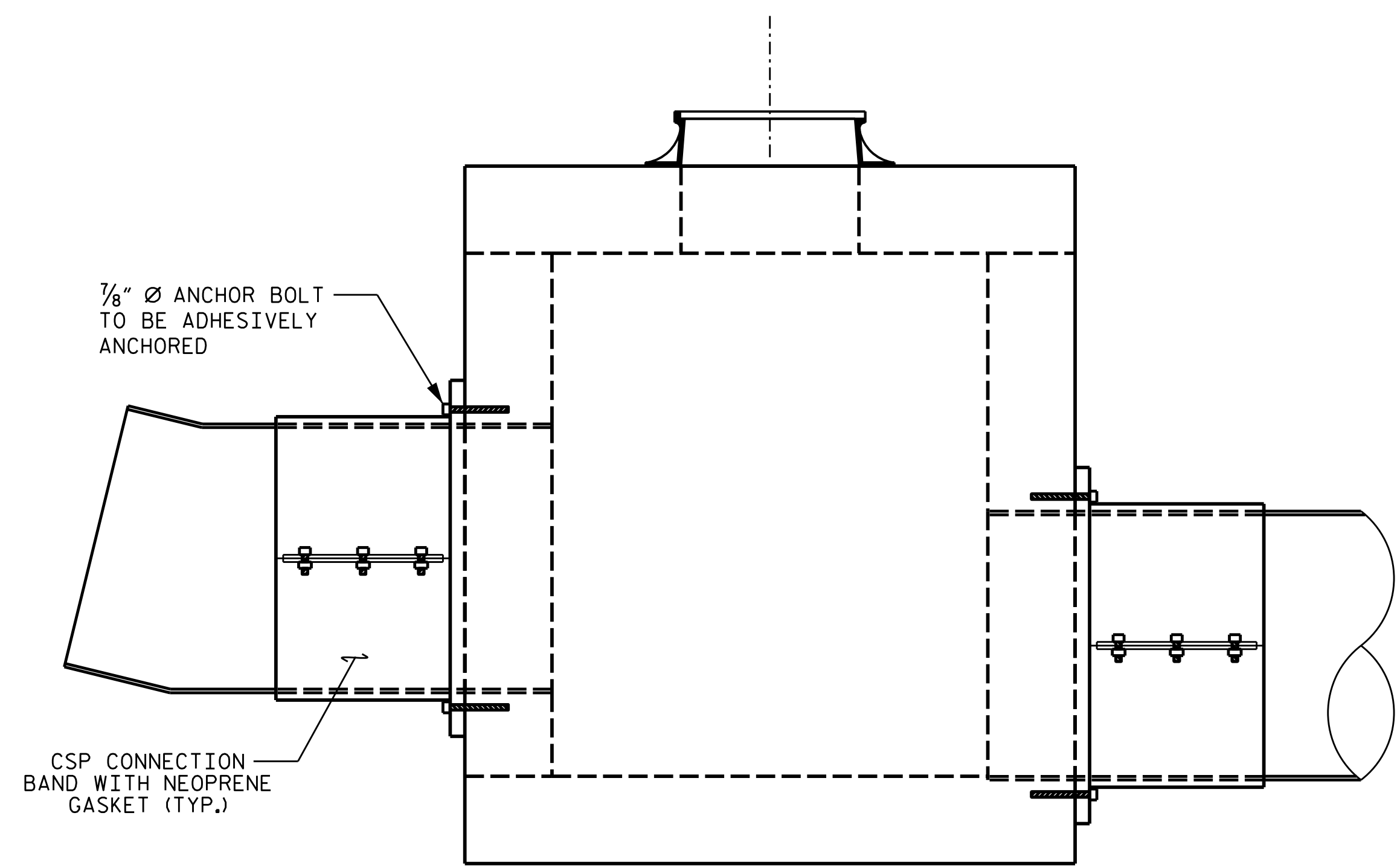
END ELEVATION



	18" CSP	24" CSP	30" CSP	36" CSP
DIM. A	12"	15"	18"	21"
DIM. B	15"	18"	21"	24"

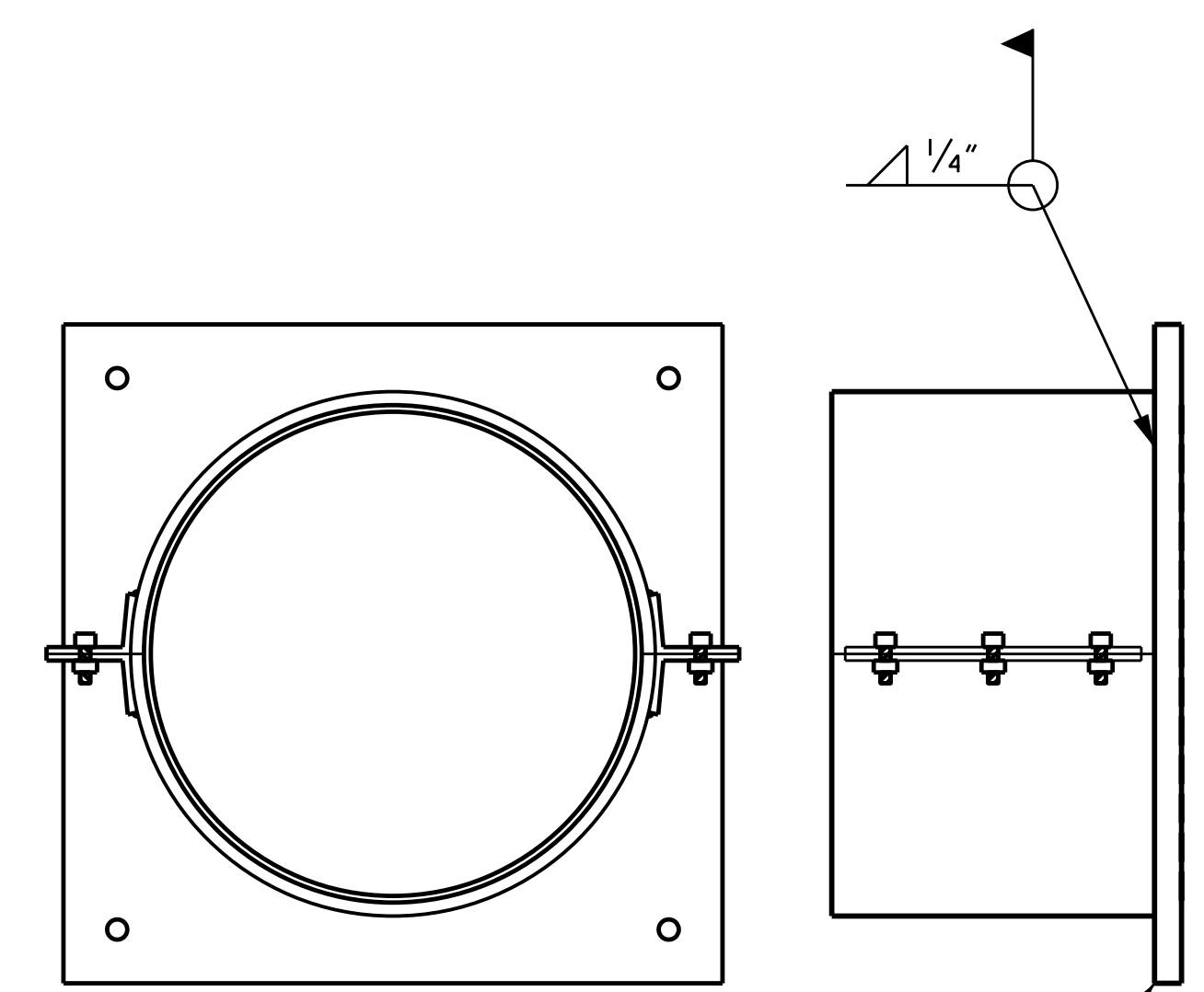


MOUNTING PLATE



SIDE ELEVATION

ELEVATION SHOWN FOR ILLUSTRATIVE PURPOSES, FOR LOCATIONS OF REQUIRED SPECIAL DESIGN PIPE CONNECTIONS, SEE DRAINAGE SUMMARY SHEETS.



MOUNTING PLATE

CONNECTION BOND TO MOUNTING PLATE WELD DETAIL

SHEET 1 OF 1

STATE OF NORTH CAROLINA
DEPARTMENT OF TRANSPORTATION
RALEIGH

SPECIAL DESIGN PIPE CONNECTION

DRAWN BY : STM DATE : 03/21
CHECKED BY : MGC DATE : 03/21