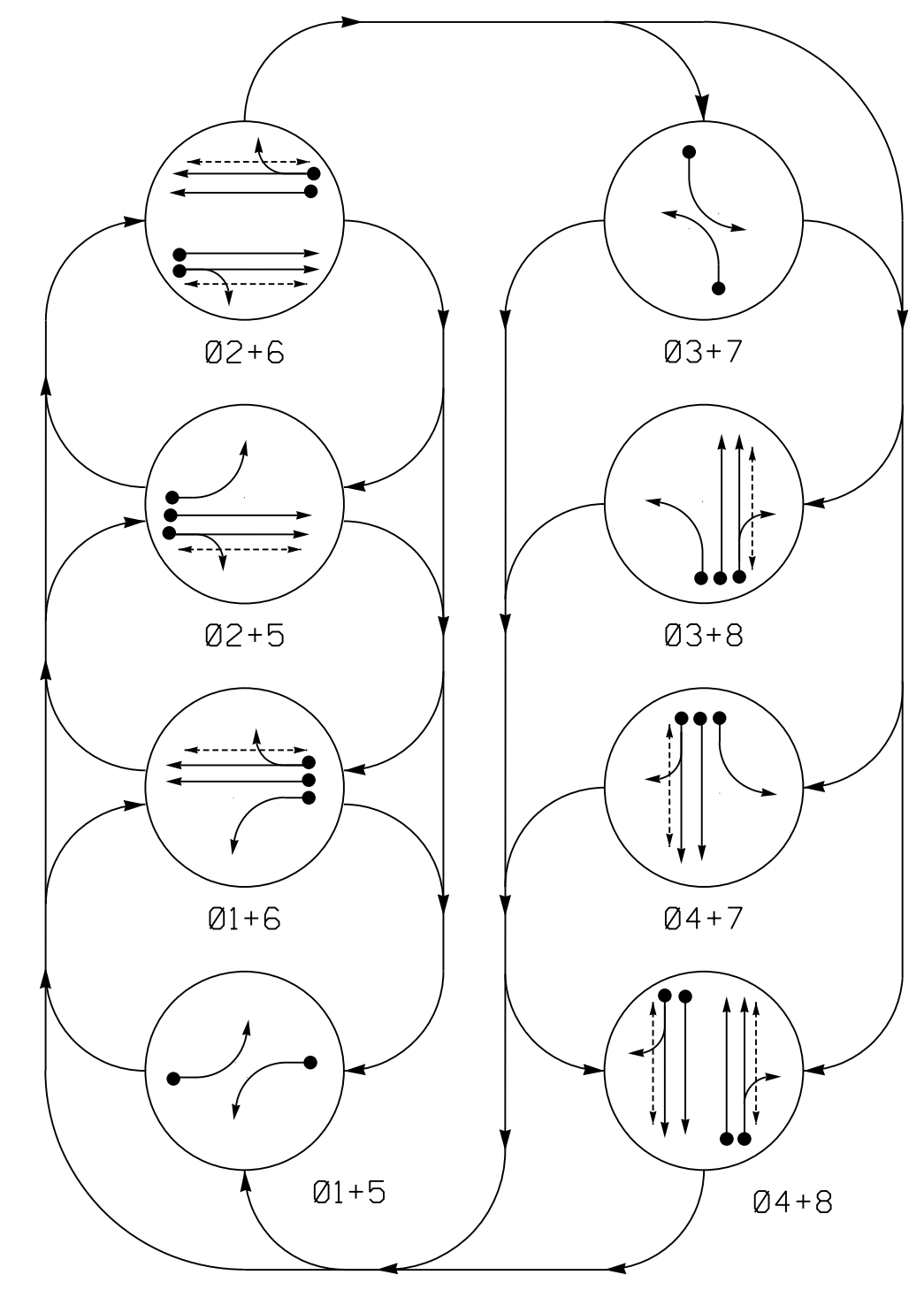


PHASING DIAGRAM



EV PREEMPT PHASES

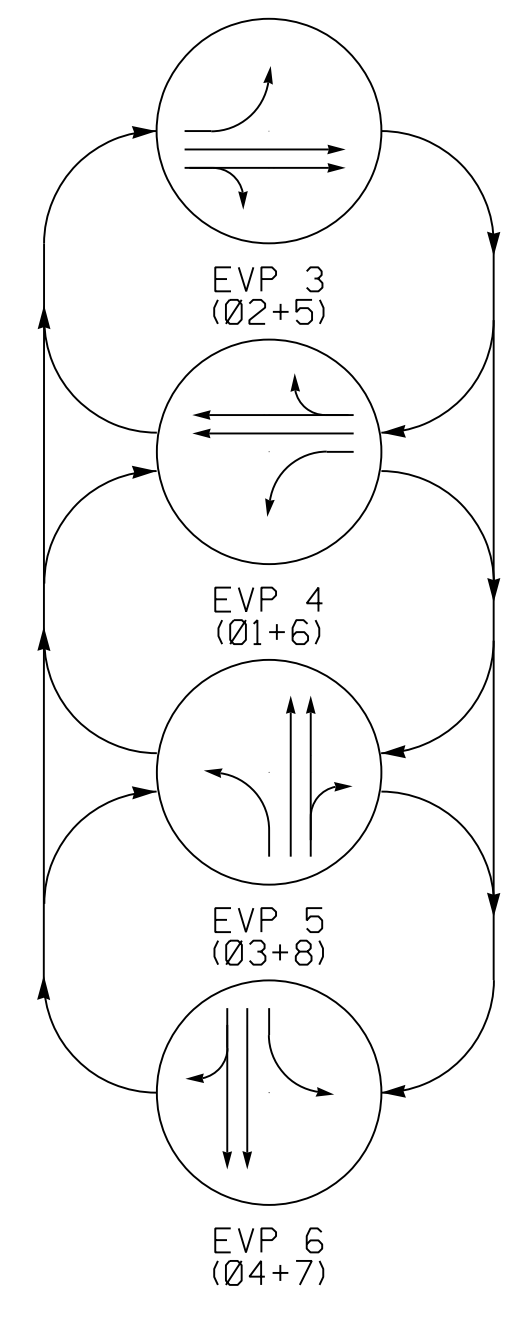


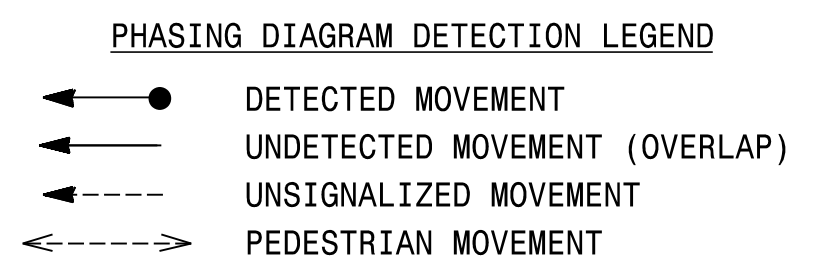
TABLE OF OPERATION: Table with columns for SIGNAL FACE and PHASE (0-8, EVP 3-6, FISH), showing movement status (R, G, Y, etc.) for each phase.

ASC/3 DETECTOR INSTALLATION CHART: Table with columns for LOOP, SIZE (FT), DISTANCE FROM STOPBAR (FT), TURNS, NEW LOOP, PHASE, CALLING, EXTEND TIME, DELAY TIME, USE ADDED INITIAL, TYPE, LOOP SYSTEM, NEW CARD.

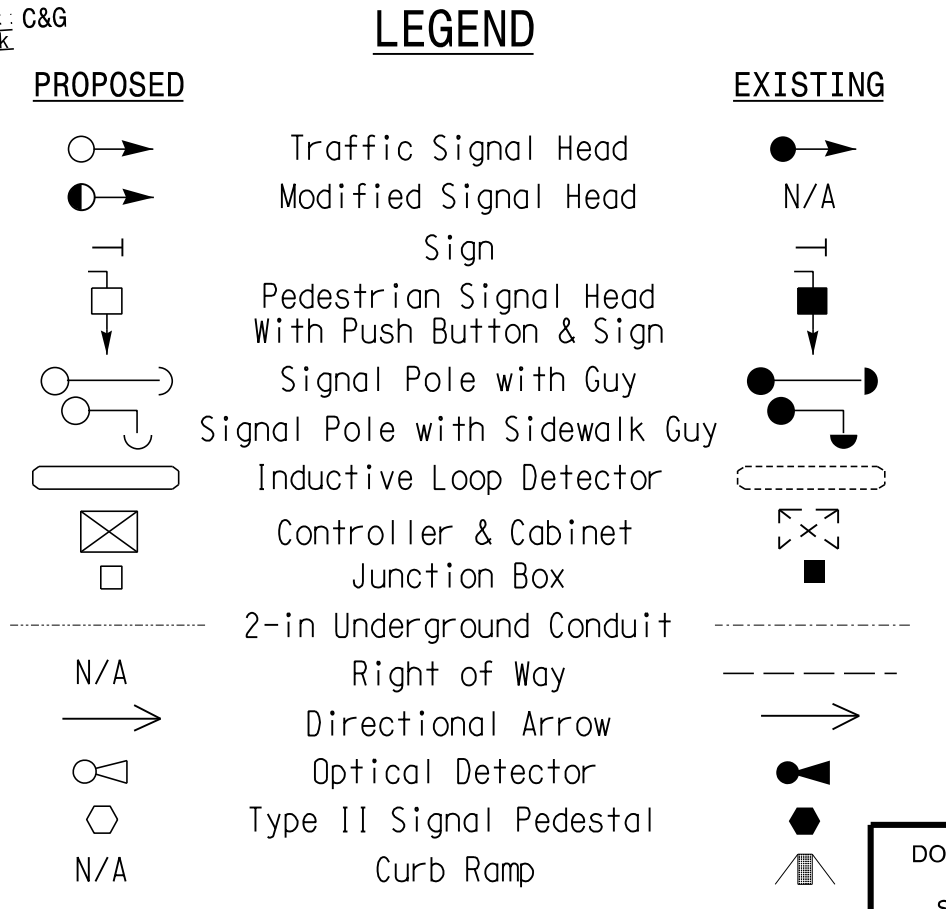
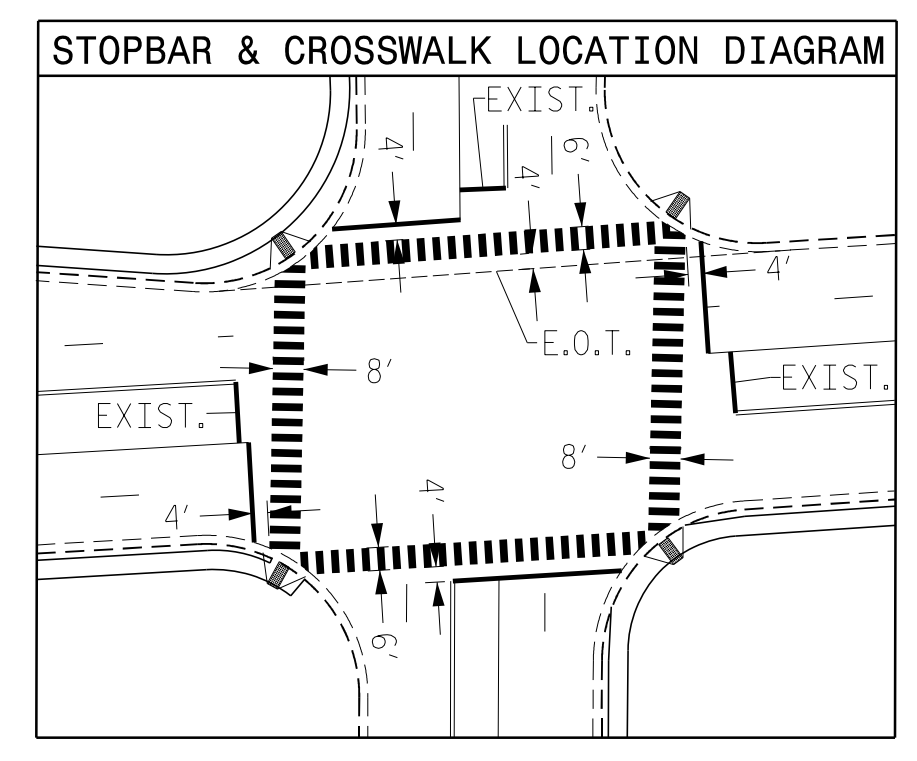
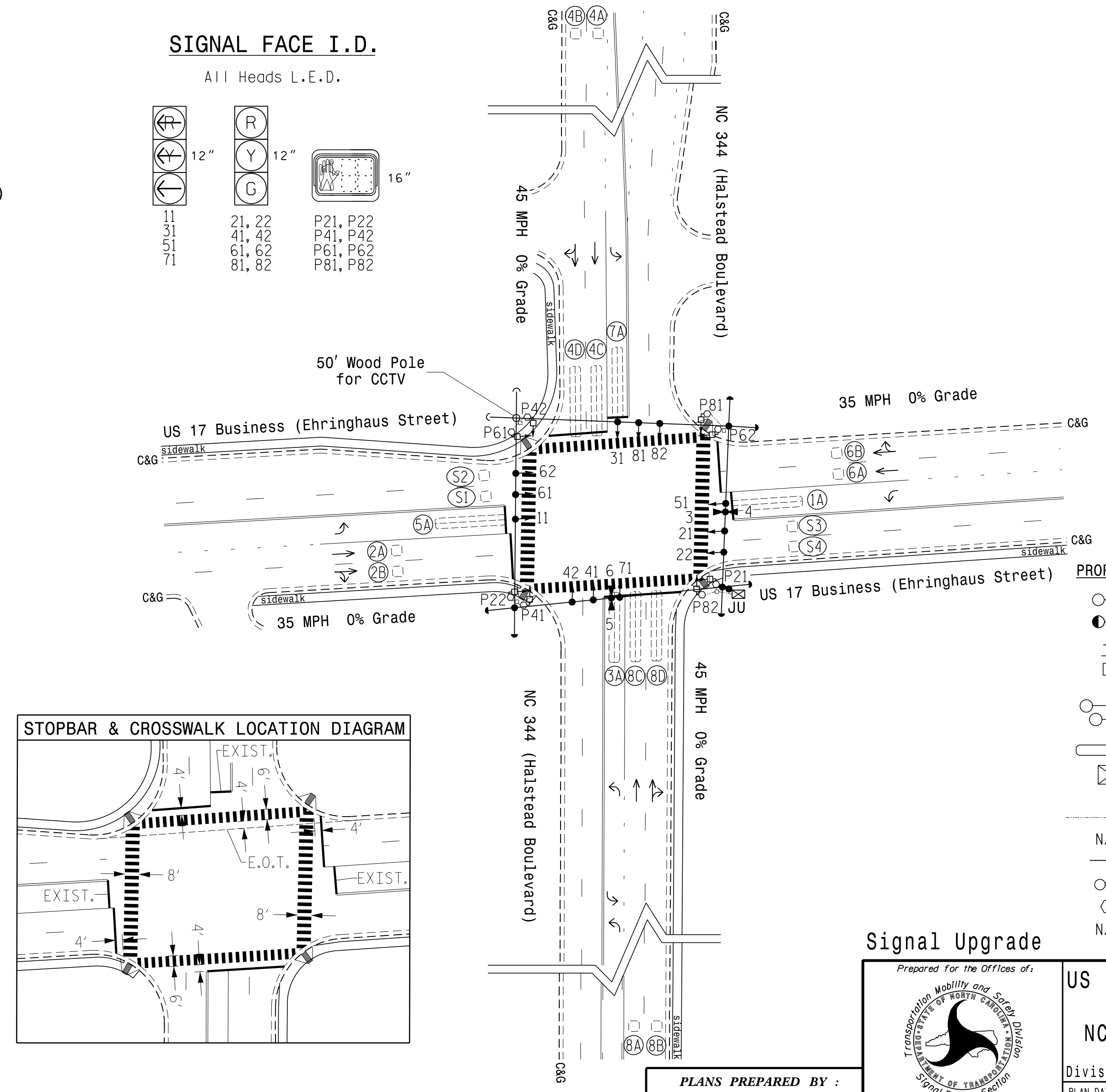
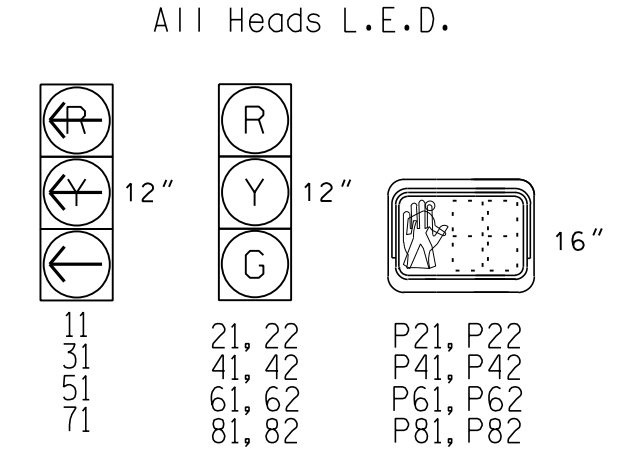
8 Phase Fully Actuated w/ Emergency Preemption (Elizabeth City Signal System) NOTES

- 1. Refer to "Roadway Standard Drawings NCDOT" dated January 2018 and "Standard Specifications for Roads and Structures" dated January 2018.
2. Do not program signal for late night flashing operation unless otherwise directed by the Engineer.
3. Phase 1 and/or phase 5 may be lagged.
4. Phase 3 and/or phase 7 may be lagged.
5. Set all detector units to presence mode.
6. Omit "WALK" and flashing "DON'T WALK" with no pedestrian calls.
7. Program pedestrian heads to countdown the flashing "DON'T WALK" time only.
8. Locate new cabinet so as not to obstruct sight distance of vehicles turning right on red.
9. Pavement markings are existing unless otherwise shown.
10. The Division Traffic Engineer will determine the Delay before Preempt and Preempt Dwell Min Green time for the emergency vehicle preemption timing.
11. This intersection features an optical preemption system. Shown locations of optical detectors are based on previous plan and/or field observations.
12. Optical detector 3 calls EVP 3; Optical detector 4 calls EVP 4; Optical detector 5 calls EVP 5; Optical detector 6 calls EVP 6.
13. Maximum times shown in timing chart are for free-run operation only. Coordinated signal system timing values supersede these values.
14. Remove three (3) unused wheel chair ramps. Repair affected curb & gutter and sidewalk.

ASC/3 EV PREEMPT: Table with columns for FUNCTION, PRE 3, PRE 4, PRE 5, PRE 6, detailing timing and control parameters for emergency preemption.



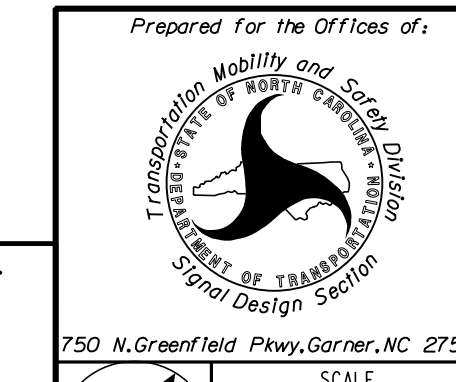
SIGNAL FACE I.D.



ASC/3 TIMING CHART: Table with columns for FEATURE and PHASE (1-8), detailing timing parameters like Min Green, Delayed Green, Walk, Ped Clear, Veh. Extension, etc.

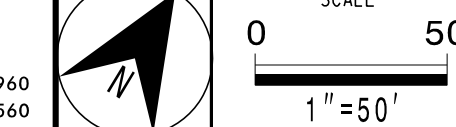
\* These values may be field adjusted. Do not adjust Min Green and Extension times for phases 2 and 6 lower than what is shown. Min Green for all other phases should not be lower than 4 seconds.
\*\* See Note 15.

Signal Upgrade



US 17 Business (Ehringhaus St.) at NC 344 (Halstead Boulevard)
Division 1 Pasquotank County Elizabeth City
PLAN DATE: September 2018 REVIEWED BY: CBHolden
PREPARED BY: DTSears REVIEWED BY:

PLANS PREPARED BY: RK&K
RUMMEL, KLEPPER & KAHL, LLP
900 RIDGFIELD DRIVE SUITE 350
RALEIGH, NORTH CAROLINA 27609-3960
NC LICENSE NO. F-0112 • (919) 878-9560



DOCUMENT NOT CONSIDERED FINAL UNLESS ALL SIGNATURES COMPLETED
SEAL NORTH CAROLINA PROFESSIONAL ENGINEER SEAL 033753
C. BYRON HOLDEN
DocuSigned by: C. Byron Holden 9/21/2018
DATE: 9/21/2018
SIG. INVENTORY NO. 01-0014