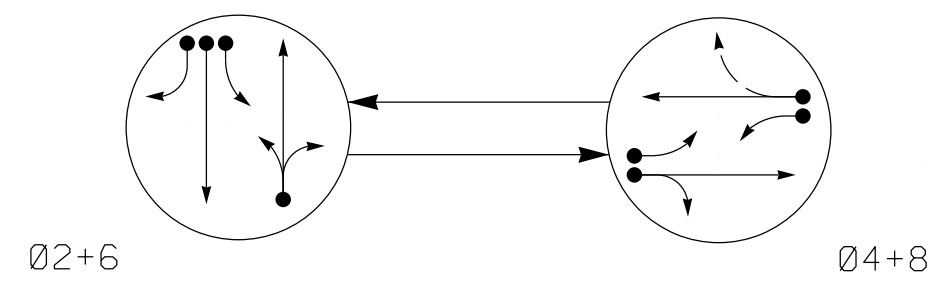


PHASING DIAGRAM



PHASING DIAGRAM DETECTION LEGEND

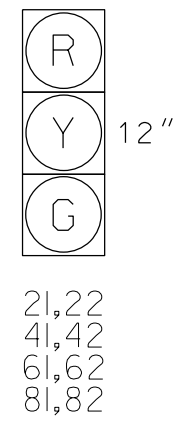
- ← DETECTED MOVEMENT
- ← UNDETECTED MOVEMENT (OVERLAP)
- ← UNSIGNALIZED MOVEMENT
- ← → PEDESTRIAN MOVEMENT

TABLE OF OPERATION

SIGNAL FACE	PHASE		
	02+6	04+8	FLASH
21, 22	G	R	Y
41, 42	R	G	R
61, 62	G	R	Y
81, 82	R	G	R

SIGNAL FACE I.D.

All Heads L.E.D.



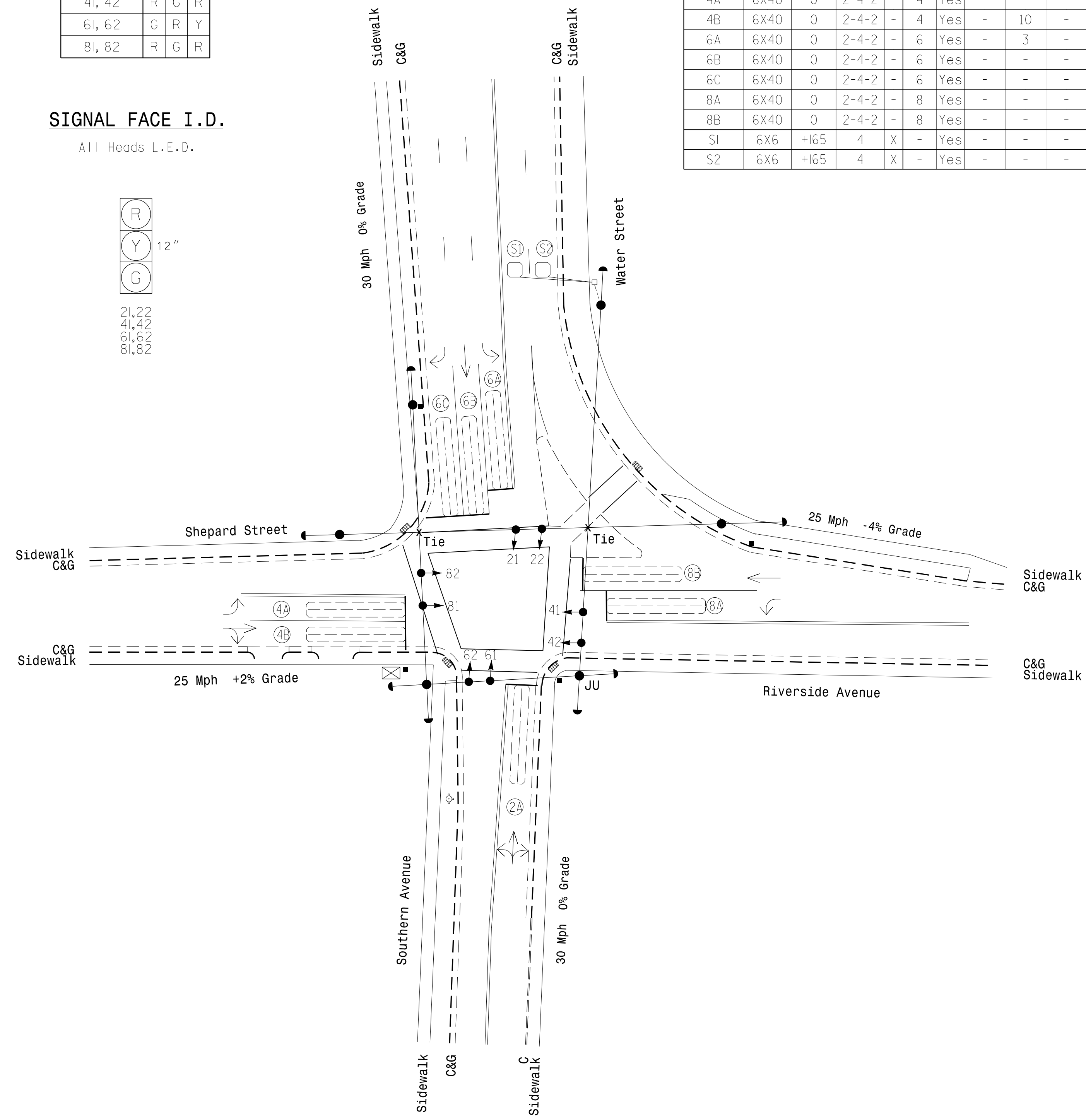
ASC/3 DETECTOR INSTALLATION CHART

LOOP	SIZE (FT)	DISTANCE FROM STOPBAR (FT)	TURNS	NEW LOOP	PROGRAMMING							
					PHASE	CALLING	EXTEND TIME	DELAY TIME	USE ADDED INITIAL	TYPE	LOOP	NEW CARD
2A	6X40	0	2-4-2	-	2	Yes	-	-	-	S	-	X
4A	6X40	0	2-4-2	-	4	Yes	-	-	-	S	-	X
4B	6X40	0	2-4-2	-	4	Yes	-	10	-	S	-	X
6A	6X40	0	2-4-2	-	6	Yes	-	3	-	S	-	X
6B	6X40	0	2-4-2	-	6	Yes	-	-	-	S	-	X
6C	6X40	0	2-4-2	-	6	Yes	-	-	-	S	-	X
8A	6X40	0	2-4-2	-	8	Yes	-	-	-	S	-	X
8B	6X40	0	2-4-2	-	8	Yes	-	-	-	S	-	X
S1	6X6	+165	4	X	-	Yes	-	-	-	N	X	X
S2	6X6	+165	4	X	-	Yes	-	-	-	N	X	X

2 Phase Fully Actuated (Elizabeth City Signal System)

NOTES

- Refer to "Roadway Standard Drawings NCDOT" dated January 2018 and "Standard Specifications for Roads and Structures" dated January 2018.
- Do not program signal for late night flashing operation unless otherwise directed by the Engineer.
- Set all detector units to presence mode.
- Locate new cabinet so as not to obstruct sight distance of vehicles turning right on red.
- Pavement markings are existing.
- Maximum times shown in timing chart are for free-run operations only. Coordinated signal system timing values supersede these values.



ASC/3 TIMING CHART

FEATURE	PHASE			
	2	4	6	8
Min Green *	10	7	10	7
Walk *	0	0	0	0
Ped Clear	0	0	0	0
Veh. Extension *	2.0	2.0	2.0	2.0
Max 1 *	60	30	60	30
Yellow	3.5	3.1	3.5	3.4
Red Clear	1.4	1.8	1.6	1.5
Actuations B4 Add *	-	-	-	-
Seconds /Actuation *	-	-	-	-
Max Initial *	-	-	-	-
Time Before Reduction *	-	-	-	-
Time To Reduce *	-	-	-	-
Minimum Gap	-	-	-	-
Locking Detector	-	-	-	-
Recall Position	VEH. RECALL	-	VEH. RECALL	-
Dual Entry	-	X	-	X
Simultaneous Gap	X	X	X	X

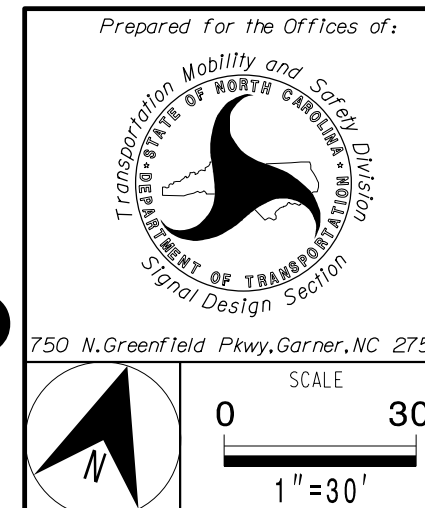
* These values may be field adjusted. Do not adjust Min Green and Extension times for phases 2 and 6 lower than what is shown. Min Green for all other phases should not be lower than 4 seconds.

LEGEND

PROPOSED	EXISTING
○ → Traffic Signal Head	● → Traffic Signal Head
○ → Modified Signal Head	N/A
○ → Sign	N/A
○ → Pedestrian Signal Head With Push Button & Sign	○ → Pedestrian Signal Head With Push Button & Sign
○ → Signal Pole with Guy	○ → Signal Pole with Guy
○ → Signal Pole with Sidewalk Guy	○ → Signal Pole with Sidewalk Guy
□ → Inductive Loop Detector	□ → Inductive Loop Detector
□ → Controller & Cabinet	□ → Controller & Cabinet
□ → Junction Box	□ → Junction Box
--- 2-in Underground Conduit	--- 2-in Underground Conduit
N/A	--- Right of Way
→ Directional Arrow	→ Directional Arrow
N/A	⊙ Fire Hydrant
N/A	▭ Curb Ramp

Signal Upgrade

DOCUMENT NOT CONSIDERED FINAL UNLESS ALL SIGNATURES COMPLETED



SR 1164 (Southern Ave.) / SR 1164 (Water St.) at Shepard St./Riverside Ave.

Division 1 Pasquotank County Elizabeth City

PLAN DATE: February 2018 REVIEWED BY: AJ Davis

PREPARED BY: JA Le REVIEWED BY: LM Moon

REVISIONS	INIT.	DATE

