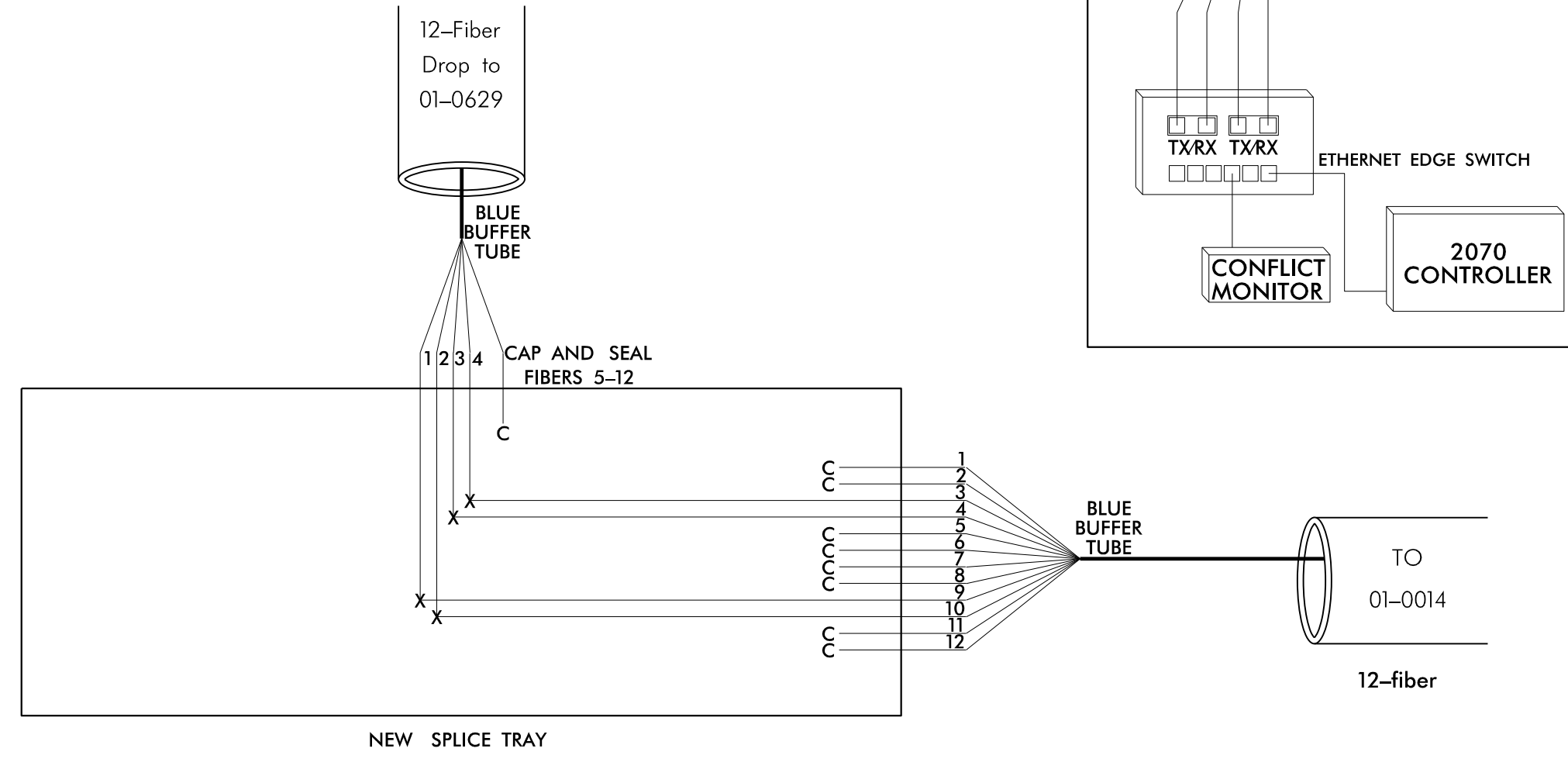
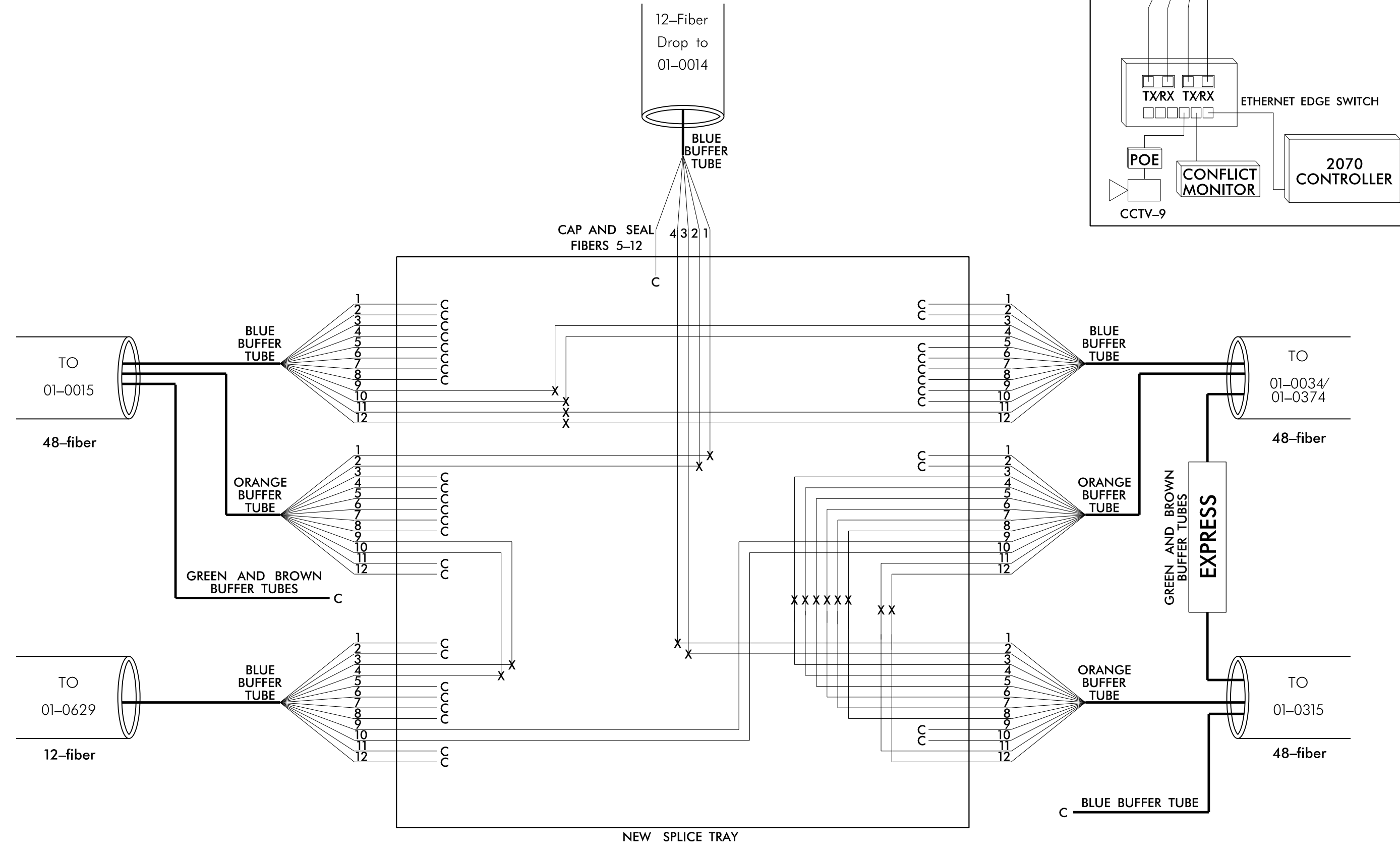


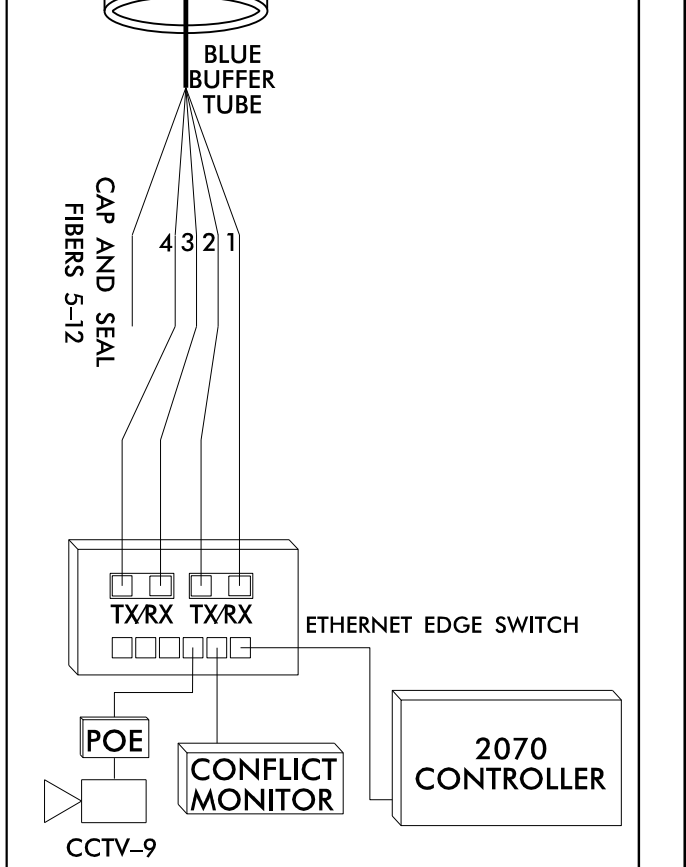
NEW AERIAL SPLICE ENCLOSURE
 US 17 Bus. (Ehringhaus St.) at Port Elizabeth Centre
 SIG. INV. # 01-0629



NEW UNDERGROUND SPLICE ENCLOSURE
 US 17 Bus. (Ehringhaus St.) at NC 344 Halstead Blvd/Weeksville Rd
 SIG. INV. # 01-0014



CONTROLLER CABINET
 SIG. INV. # 01-0014



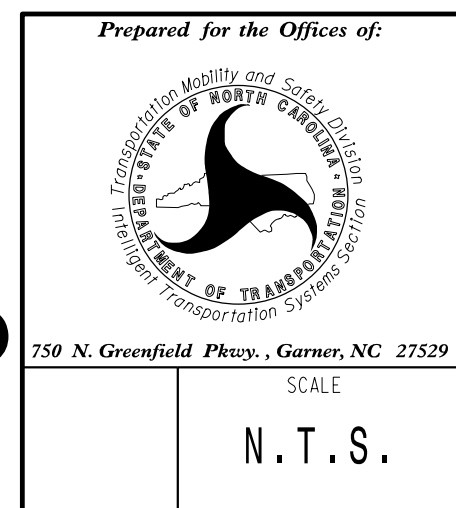
DOCUMENT NOT CONSIDERED FINAL UNLESS ALL SIGNATURES COMPLETED

LEGEND

Color Code	
TIA/EIA	598-B
BL (1) Blue	RD (7) Red
OR (2) Orange	BK (8) Black
GR (3) Green	YL (9) Yellow
BR (4) Brown	VI (10) Violet
SL (5) Slate	RS (11) Rose
WH (6) White	AQ (12) Aqua

X = Fusion Splice Individual Fiber
 C = Cap and Seal
EXPRESS = Express entire buffer tube/fibers through without cutting
BUFFER SPLICE = Splice all fibers in buffer tube color to color

- NOTES**
- Unused fibers left coiled and stored in splice tray.
 - Unused buffer tubes left coiled and stored in splice enclosure.
 - Edge switch configurations are generic. Contractor is responsible for determining/ensuring the proper terminations.



Elizabeth City Signal System Fiber-Optic Splicing Details

Division 1	Pasquotank County Elizabeth City
PLAN DATE: April 2018	REVIEWED BY: JE Beck
PREPARED BY: AJ Davis	REVIEWED BY: LM Moon
REVISIONS	INIT. DATE

