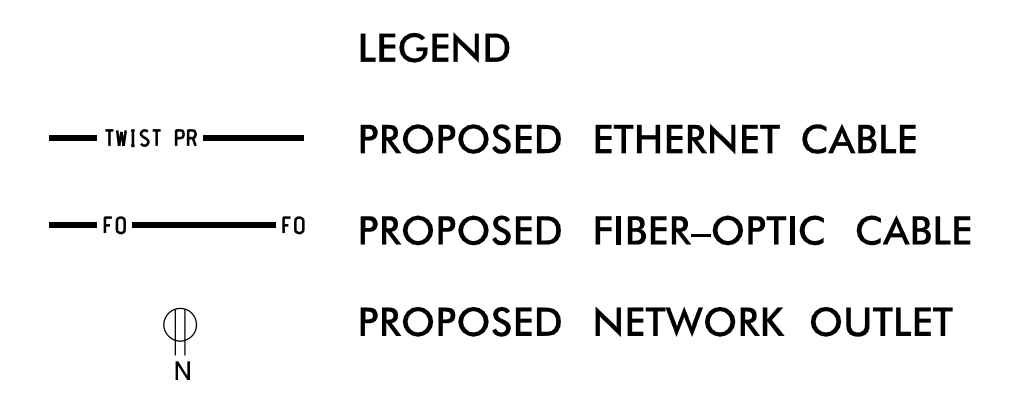
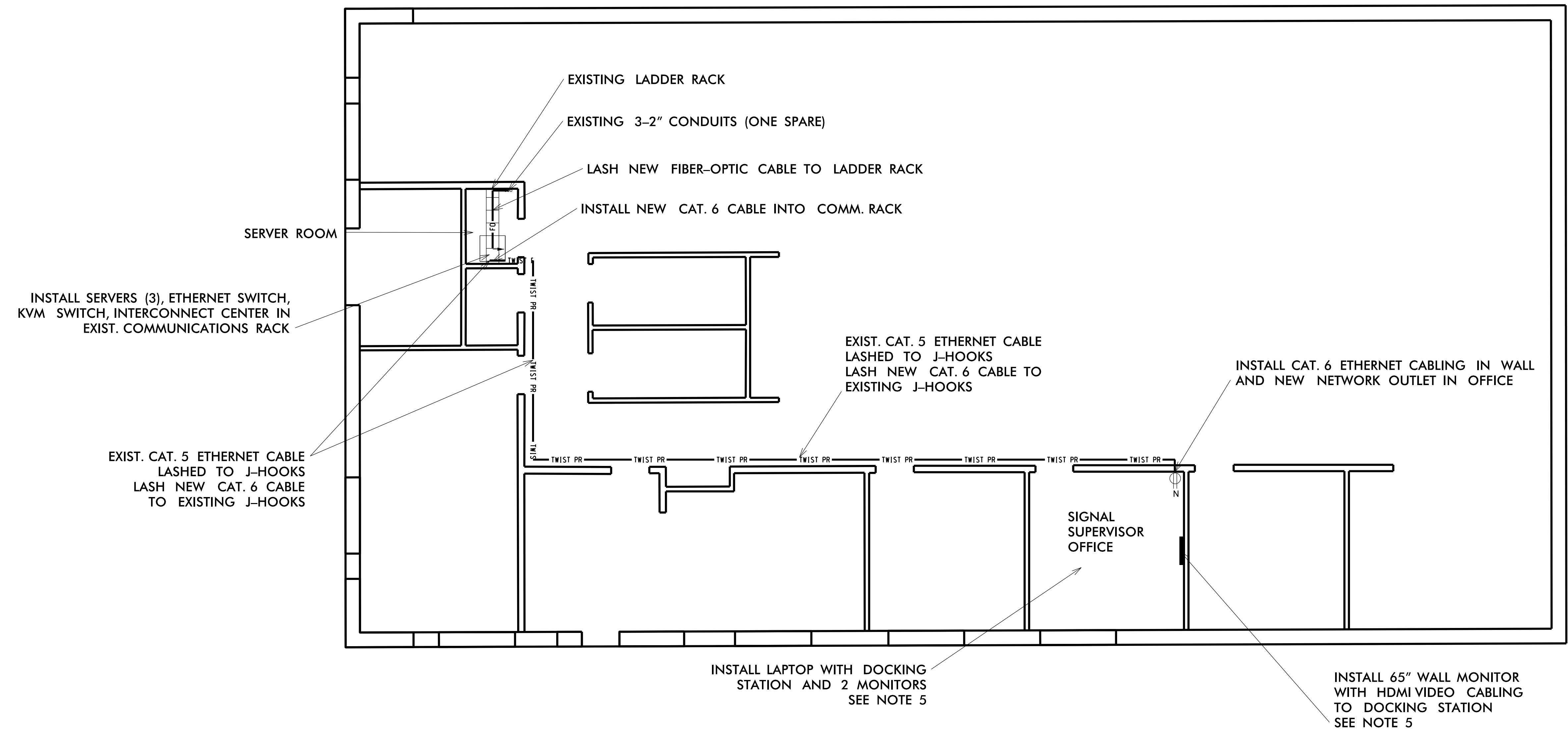


Elizabeth City District Office



- NOTES**
- SEE ALSO CRP-028 FOR CABLE ROUTING TO AND INTO THE BUILDING.
 - COORDINATE BUILDING ACCESS WITH SIGNAL SUPERVISOR.
 - INSTALL ALL NEW SERVER EQUIPMENT, ETHERNET SWITCH, INTERCONNECT CENTER, FIREWALL, AND KVM SWITCH IN EXISTING RACK.
 - INSTALL NEW ETHERNET CABLING TO SIGNAL SUPERVISOR OFFICE.
 - COORDINATE LOCATION OF LAPTOP, DOCKING STATION, AND WALL MONITOR WITH SIGNAL SUPERVISOR.
 - NCDOT TO PROCURE AND INSTALL NTERNET SERVICE FOR THE PROJECT.

\$\$\$SYTIME\$\$\$
 \$\$\$SDOANS\$\$\$
 \$\$\$SRNAME\$\$\$

5600 77 CENTER DRIVE, SUITE 340
CHARLOTTE, NORTH CAROLINA 28212
(704) 522-7275 NCBEE #F-0326

**DOCUMENT NOT CONSIDERED FINAL
UNLESS ALL SIGNATURES COMPLETED**

Elizabeth City Signal System
Traffic Management Center

Division 1 Pasquotank County Elizabeth City

PLAN DATE: August 2018 REVIEWED BY: HA Badgett

PREPARED BY: HA Badgett REVIEWED BY: BJ Slocum

REVISIONS	INIT.	DATE

SIGNATURE _____ DATE _____

CADD Filename: ITS-4.09.DGN

750 Greenfield Parkway, Garner, NC 27529

0 SCALE 5'

1" = 5'