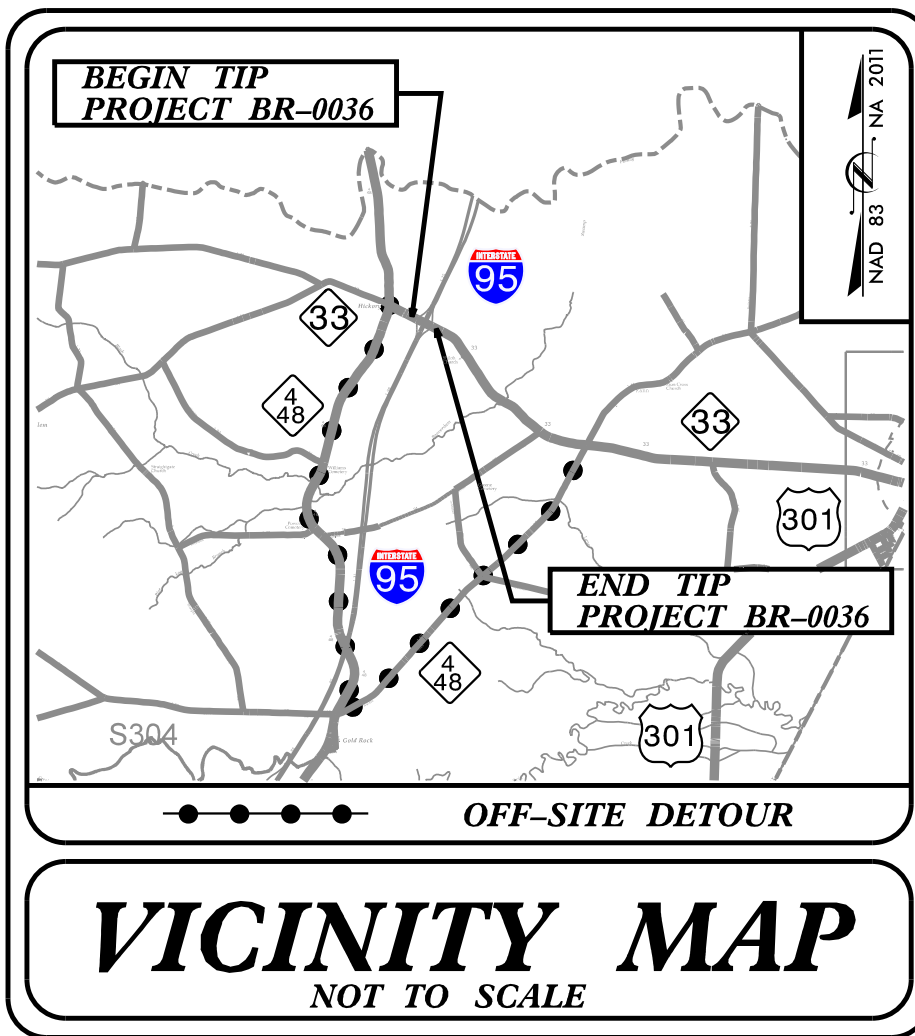
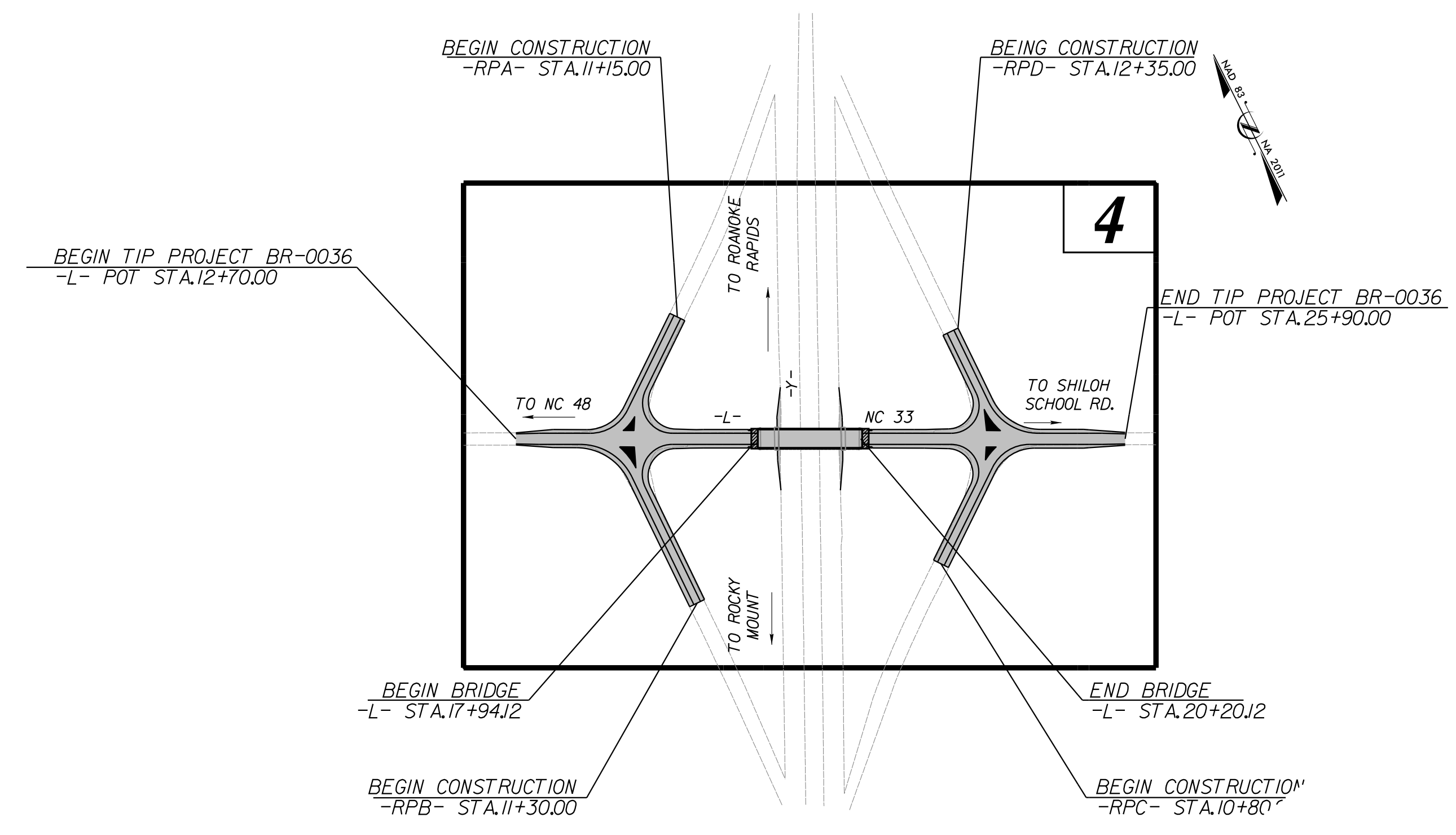


TIP PROJECT: BR-0036



STATE OF NORTH CAROLINA
DIVISION OF HIGHWAYS
PLAN FOR PROPOSED
HIGHWAY EROSION CONTROL
NASH COUNTY

LOCATION: BRIDGE NO. 630041 ON NC 33 OVER I-95
TYPE OF WORK: GRADING, DRAINAGE, PAVING AND STRUCTURE



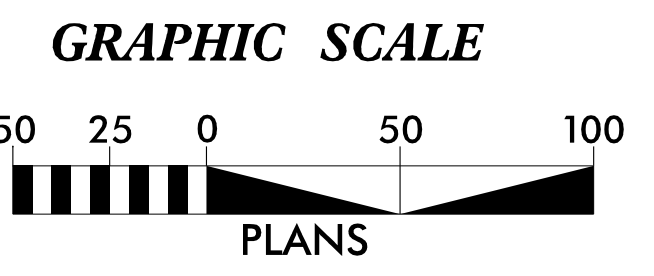
STATE	STATE PROJECT REFERENCE NO.	SHEET NO.	TOTAL SHEETS
N.C.	BR-0036	EC-1	5
STATE PROJ. NO.	F.A. PROJ. NO.	DESCRIPTION	
49074.1.1		P.E.	
49074.3.1		R/W	
49074.2.1		CONST.	

EROSION AND SEDIMENT CONTROL MEASURES

Std. #	Description	Symbol
1630.03	Temporary Silt Ditch	TD
1630.05	Temporary Diversion	TD
1605.01	Temporary Silt Fence	III III III
1606.01	Special Sediment Control Fence	III III III
1622.01	Temporary Berms and Slope Drains	TD
1630.02	Silt Basin Type B	III III III
1633.01	Temporary Rock Silt Check Type-A	III III III
	Temporary Rock Silt Check Type-A with Matting and Polyacrylamide (PAM)	III III III
1633.02	Temporary Rock Silt Check Type-B	III III III
	Wattle/Coir Fiber Wattle	EW
	Wattle/Coir Fiber Wattle with Polyacrylamide (PAM)	EW
1634.01	Temporary Rock Sediment Dam Type-A	III III III
1634.02	Temporary Rock Sediment Dam Type-B	III III III
1635.01	Rock Pipe Inlet Sediment Trap Type-A	III III III
1635.02	Rock Pipe Inlet Sediment Trap Type-B	III III III
1630.04	Stilling Basin	III III III
1630.06	Special Stilling Basin	III III III
	Rock Inlet Sediment Trap:	
1632.01	Type A	A
1632.02	Type B	B
1632.03	Type C	C
	Skimmer Basin	III III III
	Tiered Skimmer Basin	III III III
	Infiltration Basin	III III III

THIS PROJECT CONTAINS
EROSION CONTROL PLANS
FOR CLEARING AND
GRUBBING PHASE OF
CONSTRUCTION.

THIS PROJECT HAS
BEEN DESIGNED TO
SENSITIVE WATERSHED
STANDARDS.



THESE EROSION AND SEDIMENT CONTROL PLANS COMPLY WITH THE APPLICABLE REGULATIONS SET FORTH BY THE NCG-010000 GENERAL CONSTRUCTION PERMIT EFFECTIVE APRIL 1, 2019 AND ISSUED BY THE NORTH CAROLINA DEPARTMENT OF ENVIRONMENTAL QUALITY DIVISION OF WATER RESOURCES.

Prepared in the Office of:
Vaughn & Melton
Consulting Engineers
1318-F Patton Avenue
Asheville, NC 28806

Designed by:
Christian Gonzalez-Martell 3939
NAME LEVEL III CERTIFICATION NO.

Roadway Standard Drawings

The following roadway english standards as appear in "Roadway Standard Drawings"- Roadway Design Unit - N. C. Department of Transportation - Raleigh, N. C., dated January 2018 and the latest revision thereto are applicable to this project and by reference hereby are considered a part of these plans.

1604.01 Railroad Erosion Control Detail	1632.01 Rock Inlet Sediment Trap Type A
1605.01 Temporary Silt Fence	1632.02 Rock Inlet Sediment Trap Type B
1606.01 Special Sediment Control Fence	1632.03 Rock Inlet Sediment Trap Type C
1607.01 Gravel Construction Entrance	1633.01 Temporary Rock Silt Check Type A
1622.01 Temporary Berms and Slope Drains	1633.02 Temporary Rock Silt Check Type B
1630.01 Riser Basin	1634.01 Temporary Rock Sediment Dam Type A
1630.02 Silt Basin Type B	1634.02 Temporary Rock Sediment Dam Type B
1630.03 Temporary Silt Ditch	1635.01 Rock Pipe Inlet Sediment Trap Type A
1630.04 Stilling Basin	1635.02 Rock Pipe Inlet Sediment Trap Type B
1630.05 Temporary Diversion	1640.01 Coir Fiber Baffle
1630.06 Special Stilling Basin	1645.01 Temporary Stream Crossing
1631.01 Matting Installation	

3/23/2021 4:33:28 PM V:\Asheville\structures\1748-41 Nash 41 BR-0036\Environmental\Erosion Control\Design\BR0036-ENV-EC-1_TSH.dgn User: imatell

COIR FIBER WATTLE WITH POLYACRYLAMIDE (PAM) DETAIL

NOTES:

USE MINIMUM 12 IN. DIAMETER COIR FIBER (COCONUT FIBER) WATTLE.

USE 2 FT. WOODEN STAKES WITH A 2 IN. BY 2 IN. NOMINAL CROSS SECTION.

ONLY INSTALL WATTLE(S) TO A HEIGHT IN DITCH SO FLOW WILL NOT WASH AROUND WATTLE AND SCOUR DITCH SLOPES AND AS DIRECTED.

INSTALL A MINIMUM OF 2 UPSLOPE STAKES AND 4 DOWNSLOPE STAKES AT AN ANGLE TO WEDGE WATTLE TO BOTTOM OF DITCH.

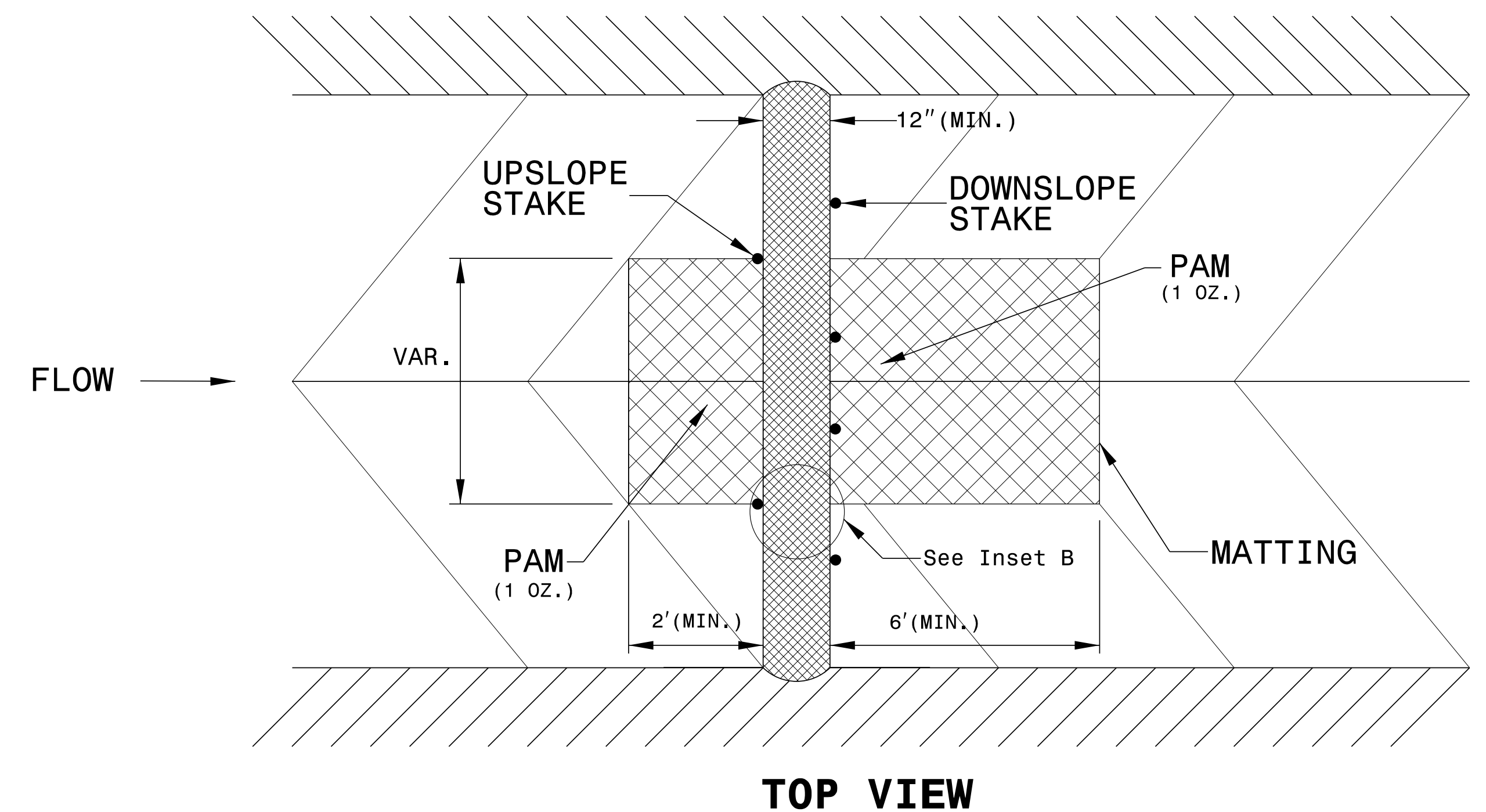
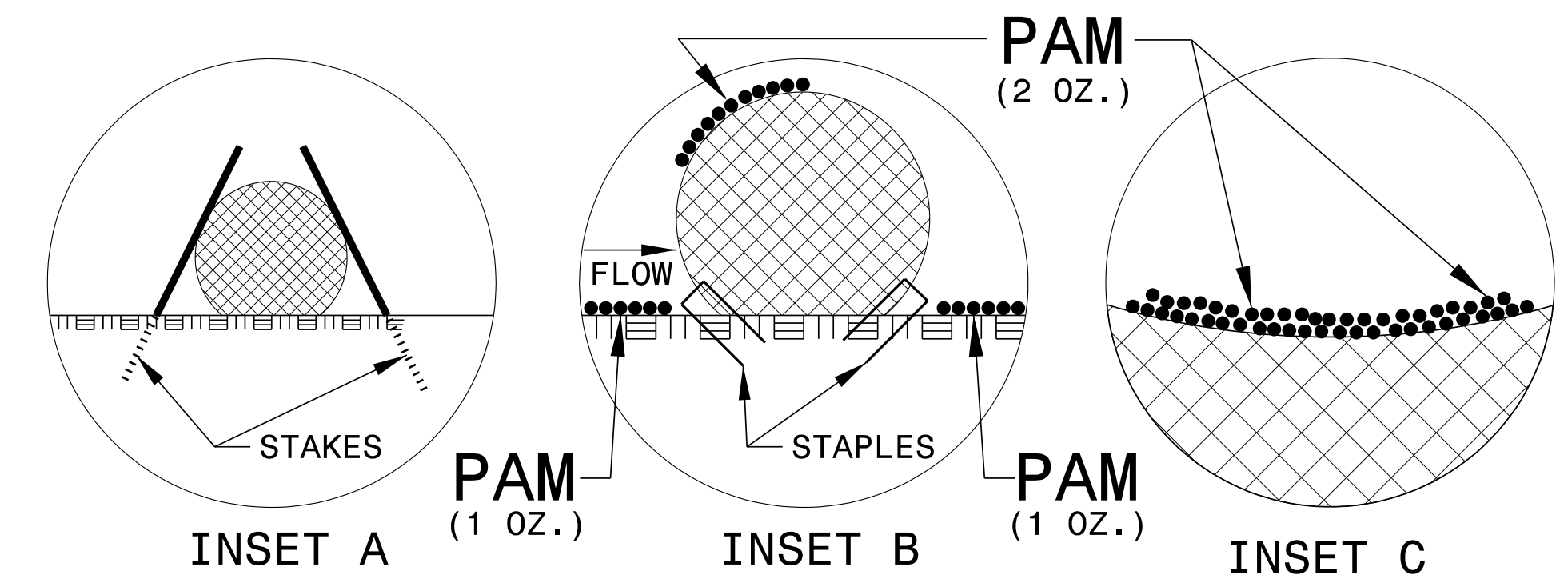
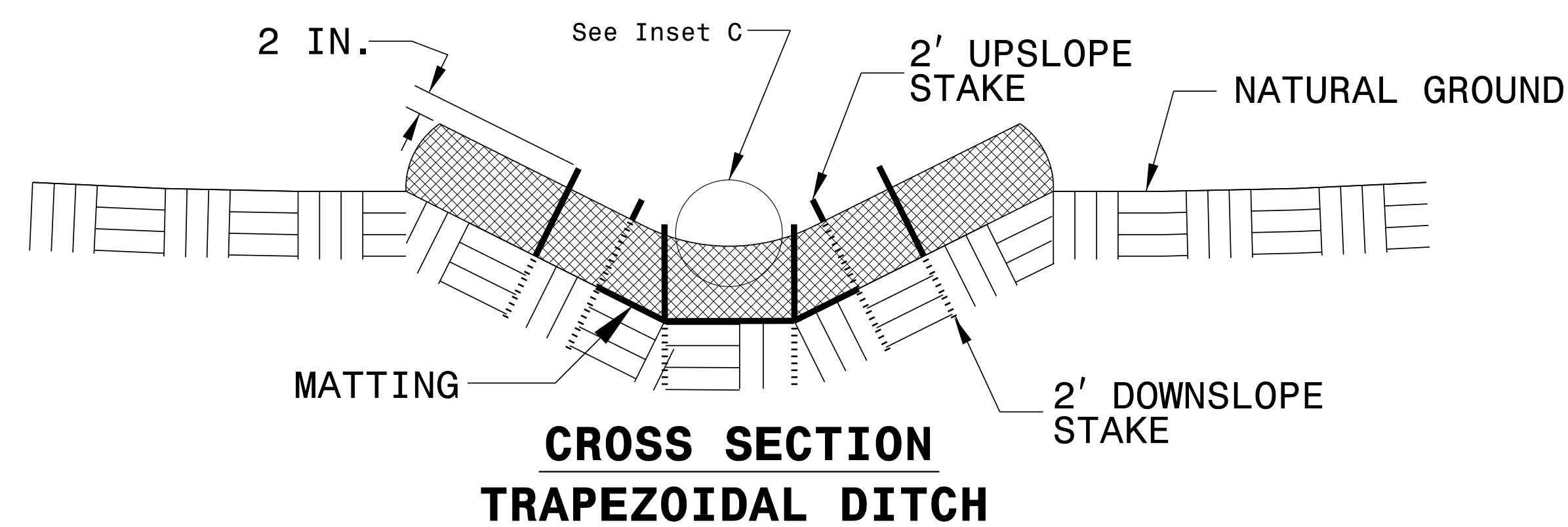
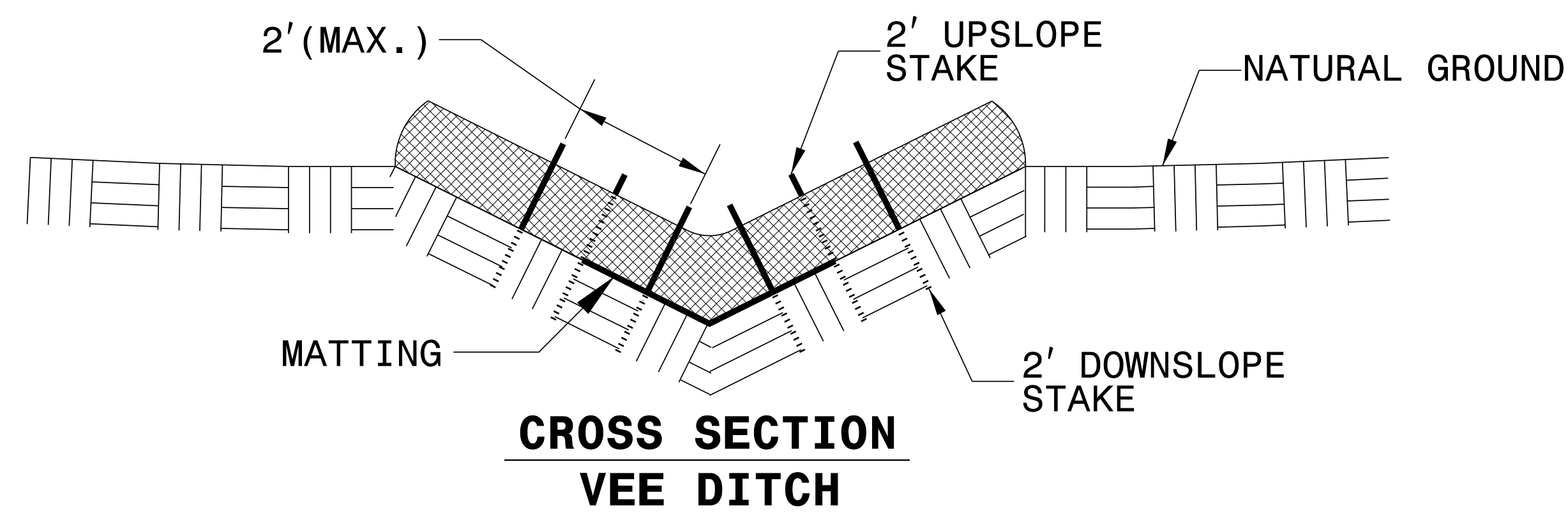
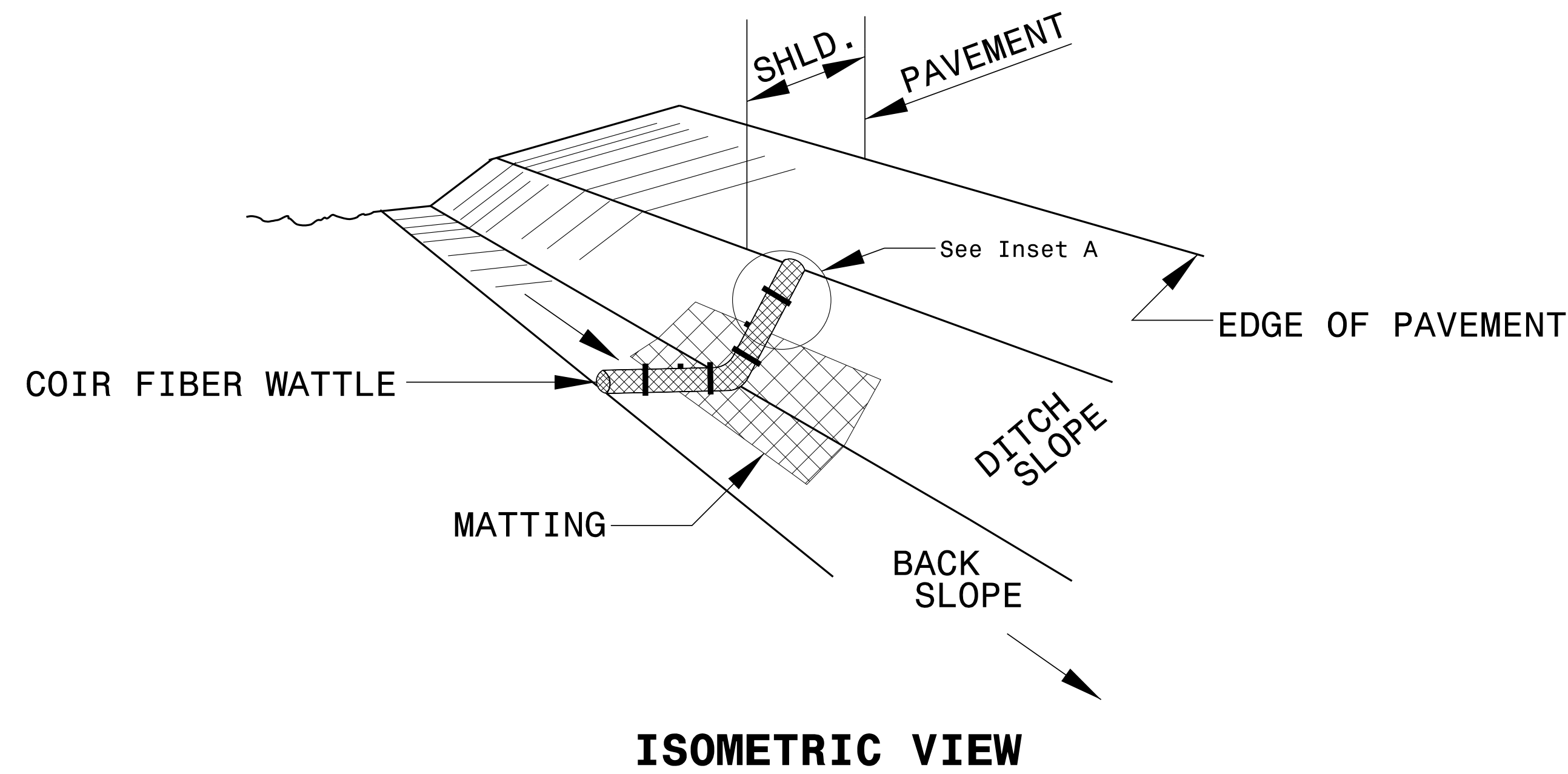
PROVIDE STAPLES MADE OF 0.125 IN. DIAMETER STEEL WIRE FORMED INTO A U SHAPE NOT LESS THAN 12" IN LENGTH.

INSTALL STAPLES APPROXIMATELY EVERY 1 LINEAR FOOT ON BOTH SIDES OF WATTLE AND AT EACH END TO SECURE IT TO THE SOIL.

INSTALL MATTING IN ACCORDANCE WITH SECTION 1631 OF THE STANDARD SPECIFICATIONS.

PRIOR TO POLYACRYLAMIDE (PAM) APPLICATION, OBTAIN A SOIL SAMPLE FROM PROJECT LOCATION, AND FROM OFFSITE MATERIAL, AND ANALYZE FOR APPROPRIATE PAM FLOCCULANT TO BE APPLIED TO EACH WATTLE.

INITIALLY APPLY 2 OUNCES OF ANIONIC OR NEUTRALLY CHARGED PAM OVER WATTLE WHERE WATER WILL FLOW AND 1 OUNCE OF PAM ON MATTING ON EACH SIDE OF WATTLE. REAPPLY PAM AFTER EVERY RAINFALL EVENT THAT IS EQUAL TO OR EXCEEDS 0.50 IN.



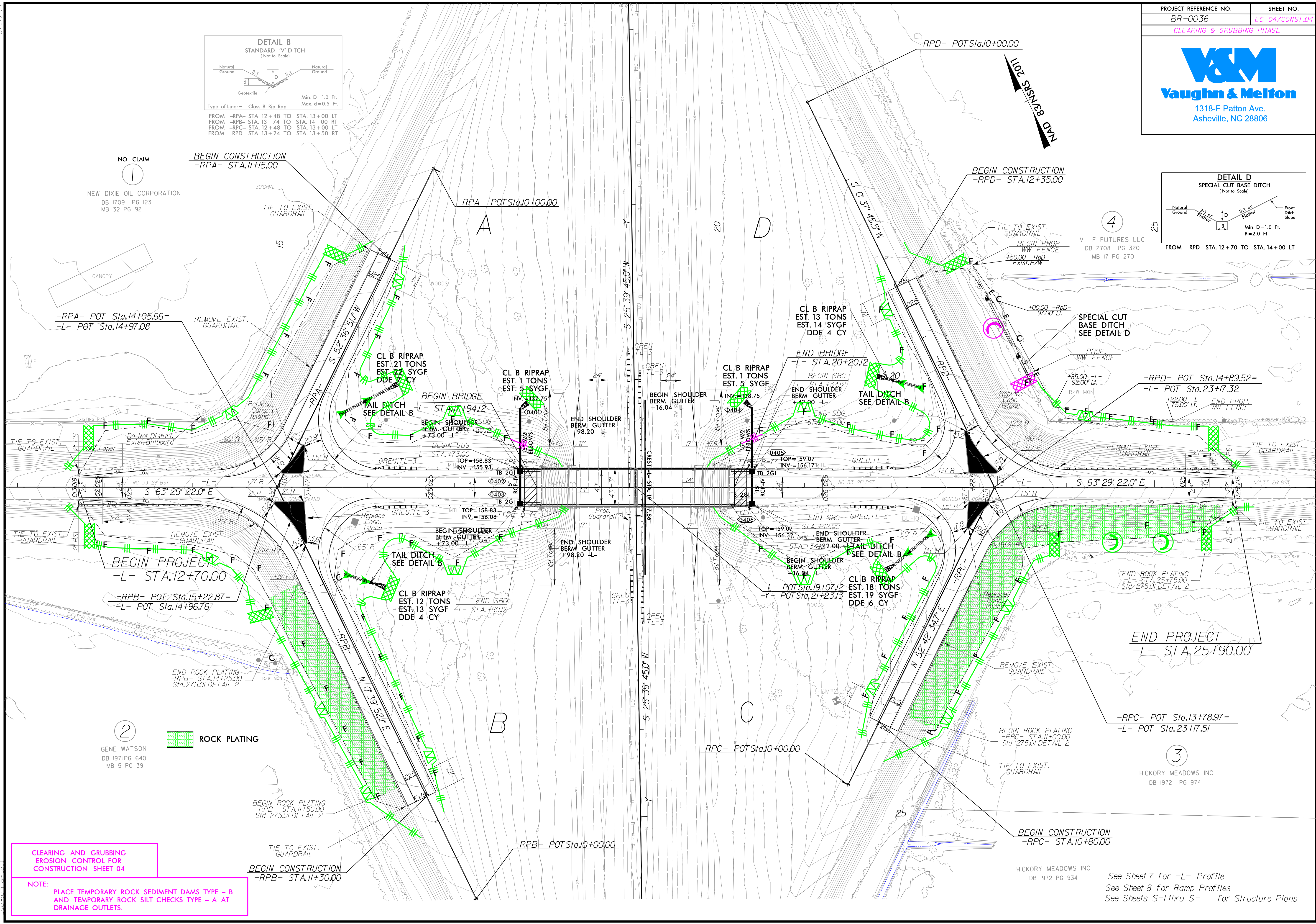
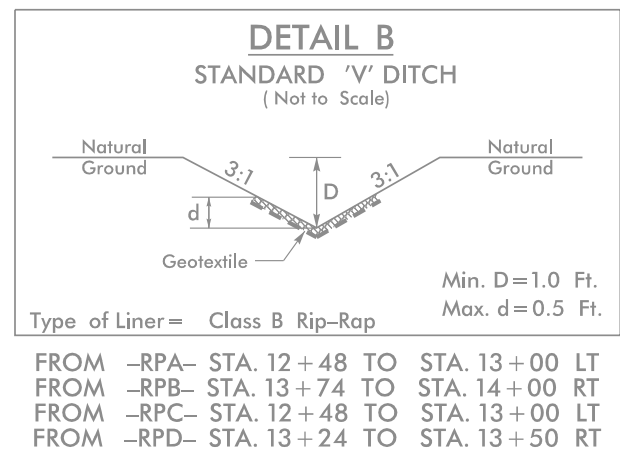
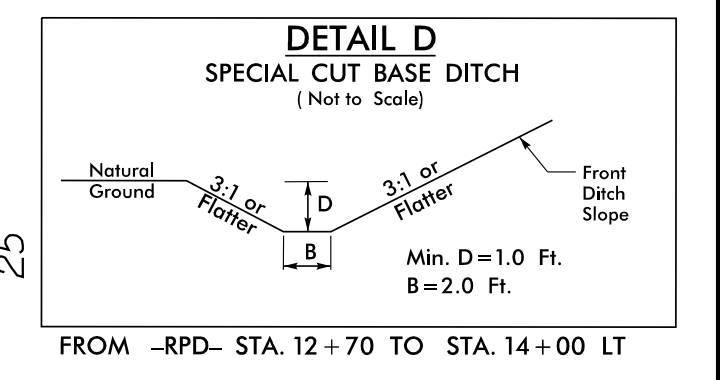
8/17/99
3/31/2021 2:26:47 PM
V:\ref\structures\31748-41_Nash_41_BR-0036\Environmental\Erosion_Control\Design\BR0036_ENV_EC-2.dgn

DIVISION OF HIGHWAYS
STATE OF NORTH CAROLINA



SOIL STABILIZATION TIMEFRAMES

<i>SITE DESCRIPTION</i>	<i>STABILIZATION TIME</i>	<i>TIMEFRAME EXCEPTIONS</i>
PERIMETER DIKES, SWALES, DITCHES AND SLOPES	7 DAYS	NONE
HIGH QUALITY WATER (HQW) ZONES	7 DAYS	NONE
SLOPES STEEPER THAN 3:1	7 DAYS	IF SLOPES ARE 10' OR LESS IN LENGTH AND ARE NOT STEEPER THAN 2:1, 14 DAYS ARE ALLOWED.
SLOPES 3:1 OR FLATTER	14 DAYS	7 DAYS FOR SLOPES GREATER THAN 50' IN LENGTH.
ALL OTHER AREAS WITH SLOPES FLATTER THAN 4:1	14 DAYS	NONE, EXCEPT FOR PERIMETERS AND HQW ZONES.



NO CLAIM
 NEW DIXIE OIL CORPORATION
 DB 1709 PG 123
 MB 32 PG 92

3/23/2021 3:45:35 PM
 V:\2021\Projects\BR0036\Environmental\Erosion Control\Design\BR0036_ENV_EC-4.dgn
 8.17/99

**CLEARING AND GRUBBING
 EROSION CONTROL FOR
 CONSTRUCTION SHEET 04**

NOTE:
 PLACE TEMPORARY ROCK SEDIMENT DAMS TYPE - B
 AND TEMPORARY ROCK SILT CHECKS TYPE - A AT
 DRAINAGE OUTLETS.

2
 GENE WATSON
 DB 1971 PG 640
 MB 5 PG 39

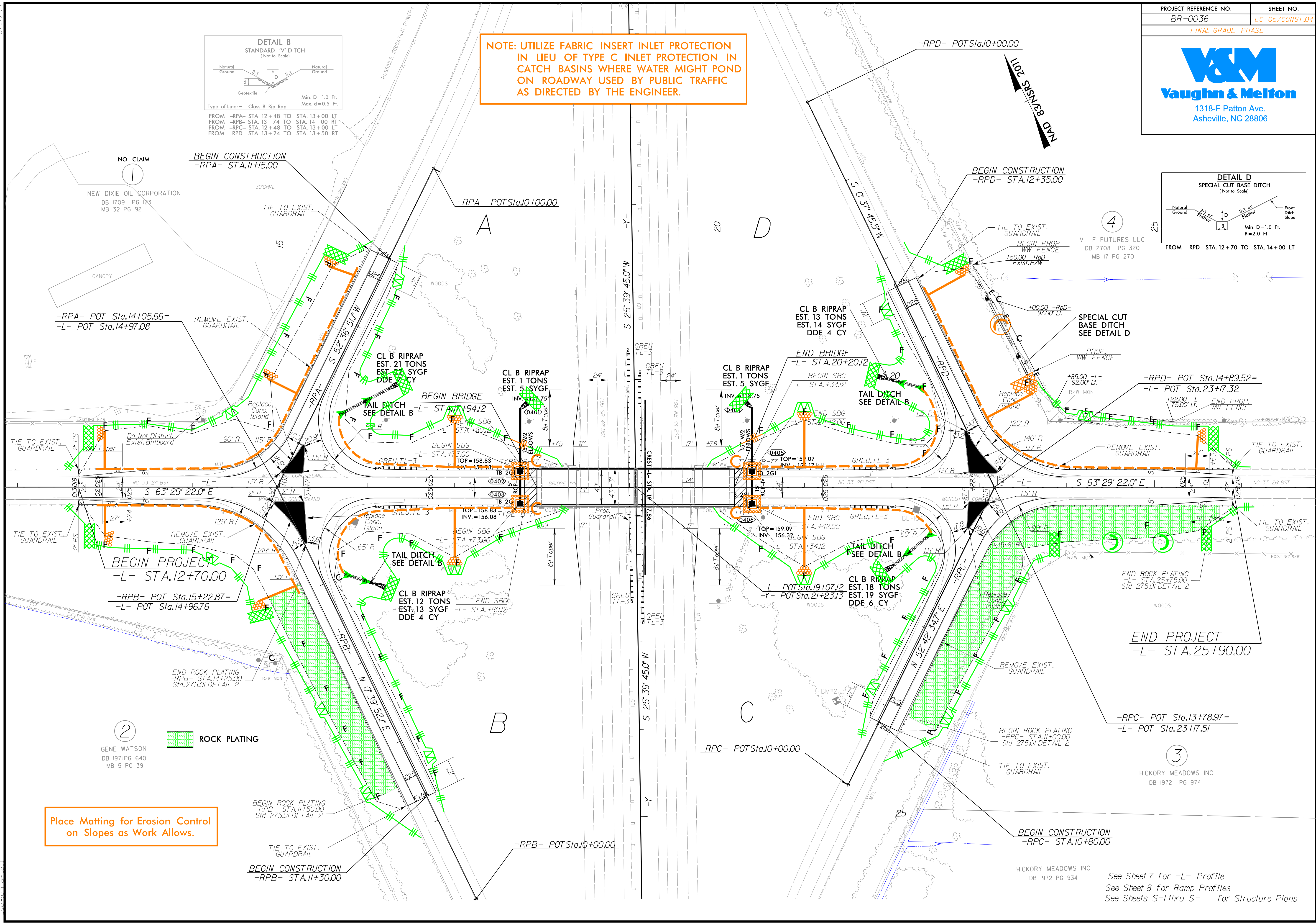
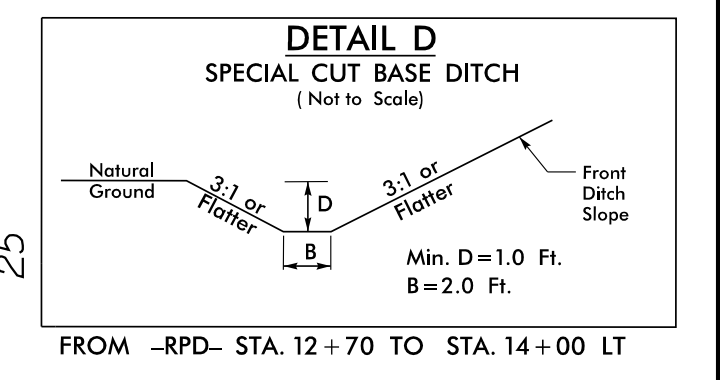
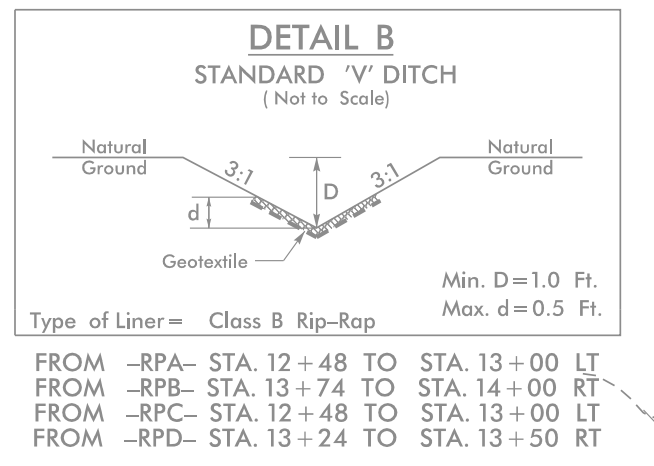
ROCK PLATING

3
 HICKORY MEADOWS INC
 DB 1972 PG 974

See Sheet 7 for -L- Profile
 See Sheet 8 for Ramp Profiles
 See Sheets S-1 thru S- for Structure Plans



NOTE: UTILIZE FABRIC INSERT INLET PROTECTION IN LIEU OF TYPE C INLET PROTECTION IN CATCH BASINS WHERE WATER MIGHT POND ON ROADWAY USED BY PUBLIC TRAFFIC AS DIRECTED BY THE ENGINEER.



Place Matting for Erosion Control on Slopes as Work Allows.

②
GENE WATSON
DB 1971 PG 640
MB 5 PG 39

③
HICKORY MEADOWS INC
DB 1972 PG 974

See Sheet 7 for -L- Profile
See Sheet 8 for Ramp Profiles
See Sheets S-1 thru S- for Structure Plans

3/23/2021 2:41:34 PM V:\ash\vaughn\structures\31748-41_Nash_41_BR-0036\Environmental\EROSION Control\Design\BR0036_ENV_EC-5.dgn