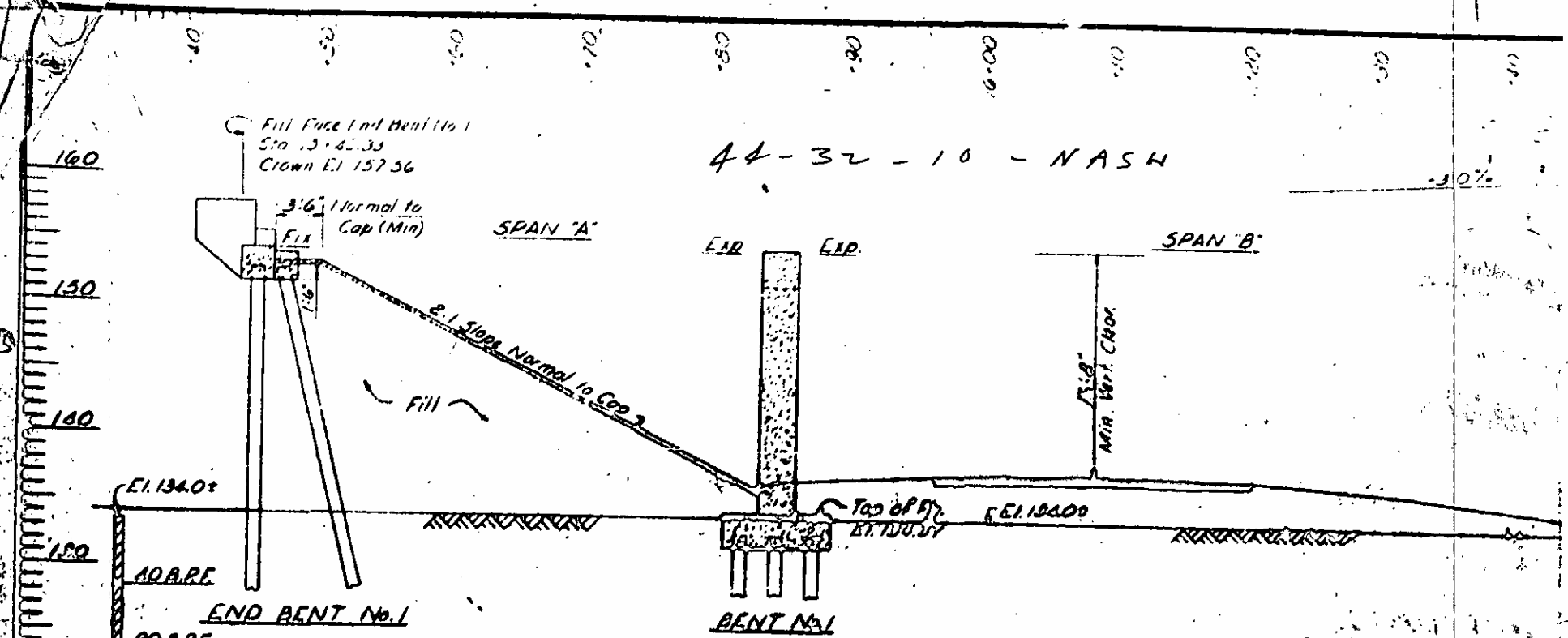
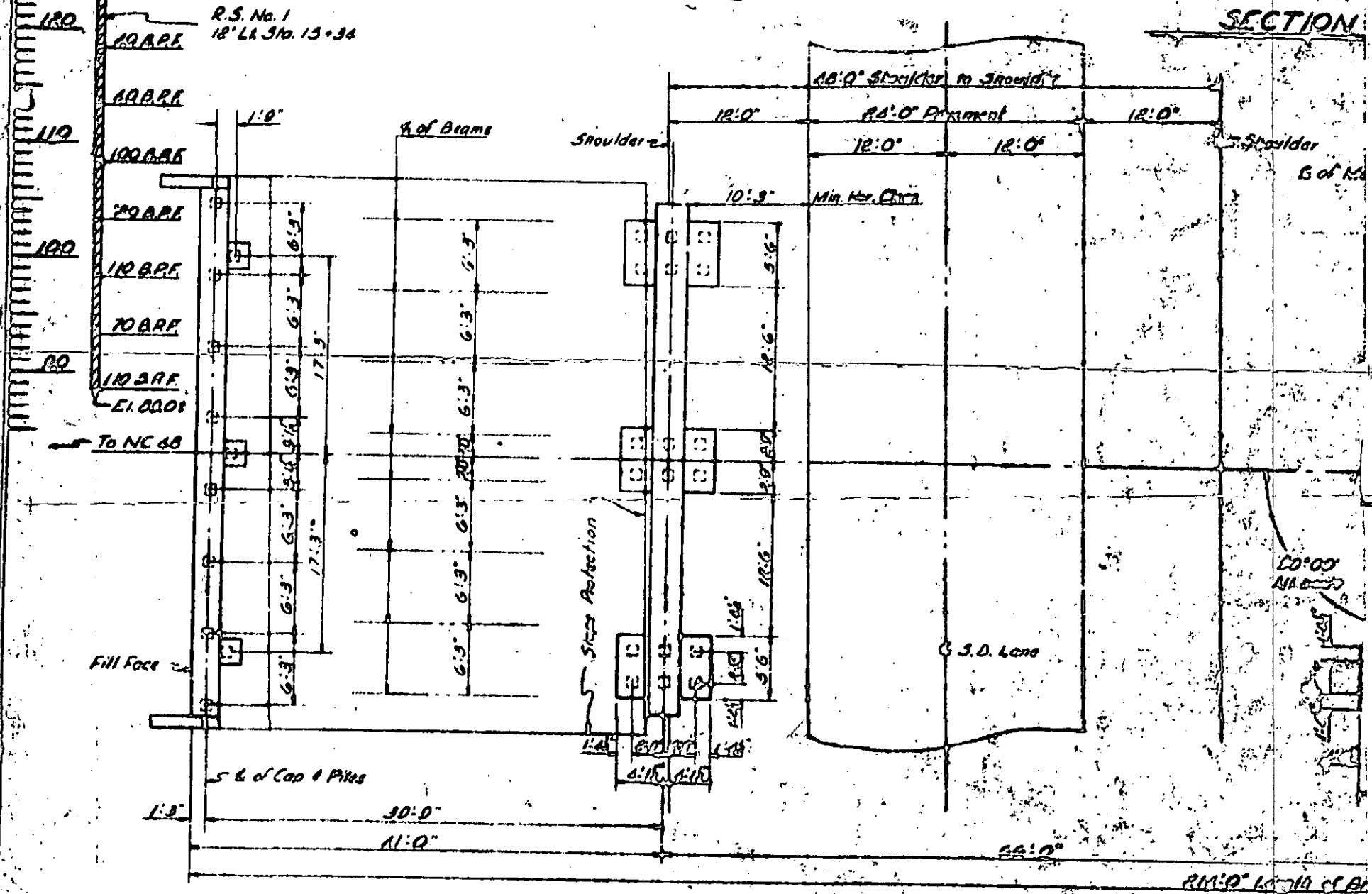


44-32-10-NASH

Fill Face End Bent No. 1
Sta. 13+45.33
Crown El. 157.56

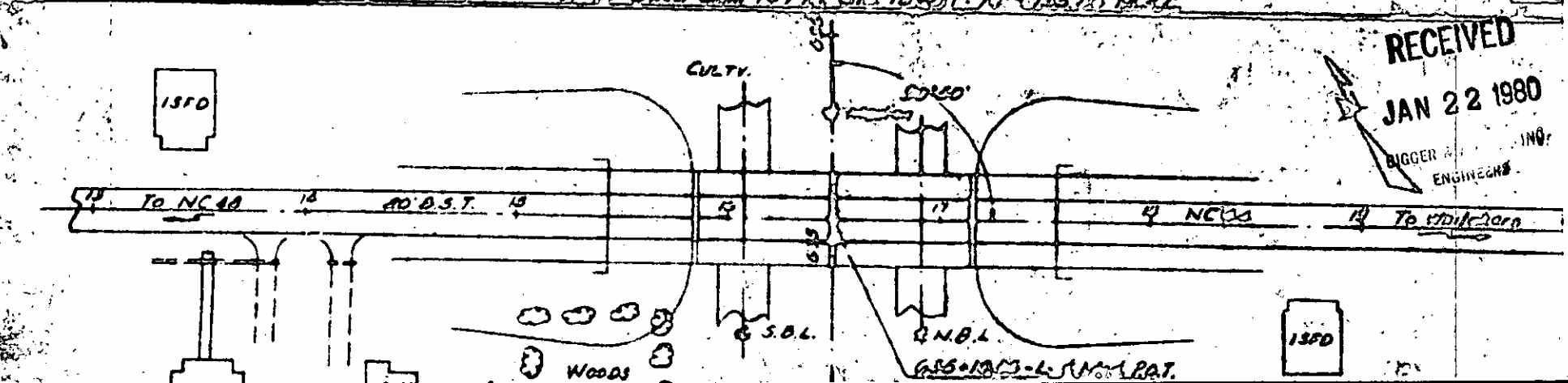


SECTION



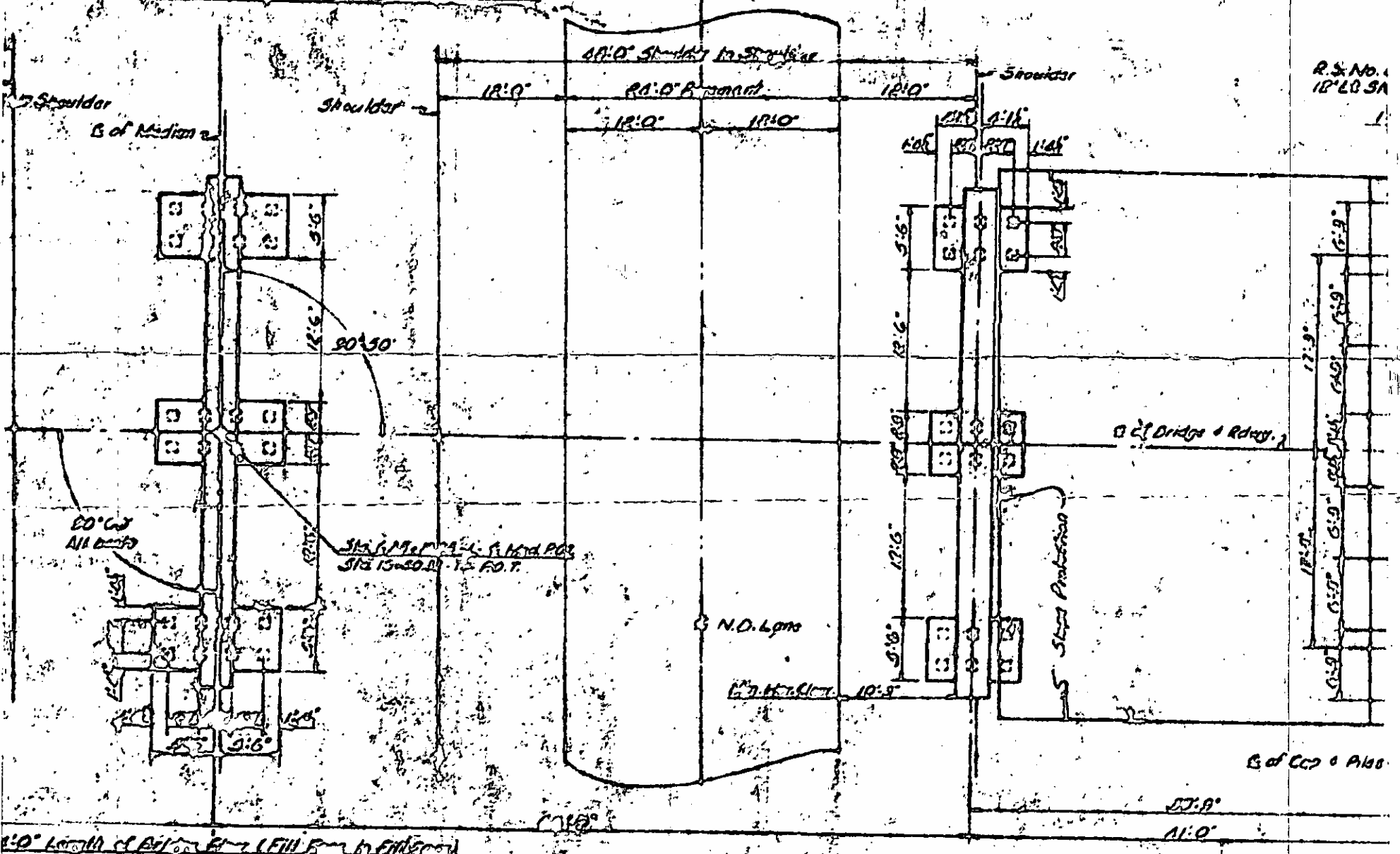
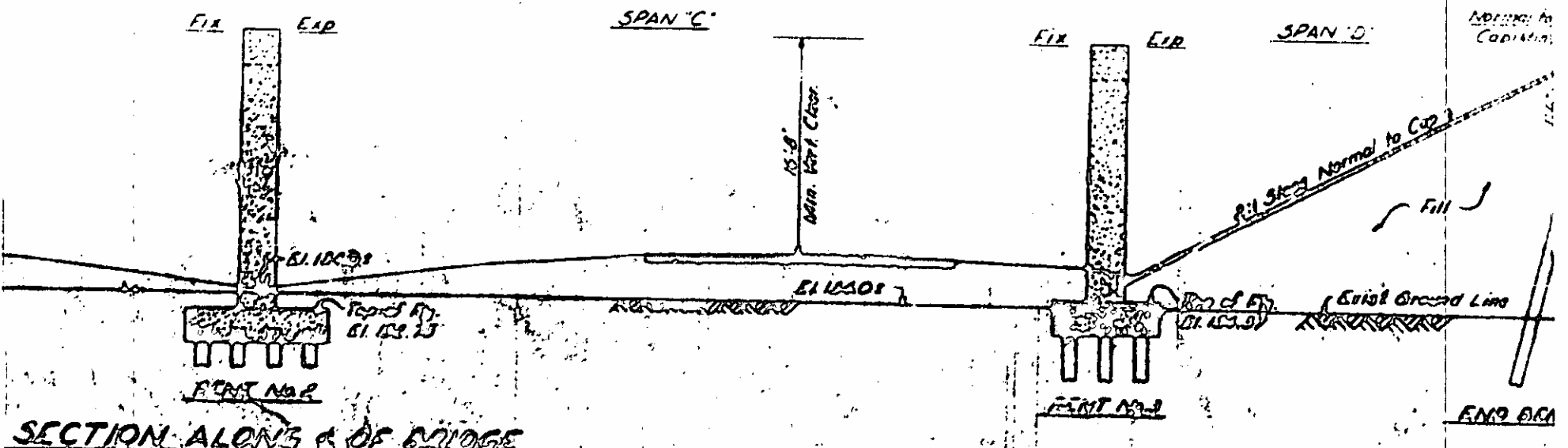
T.P.M. - 3 Nails in root of 1 1/2\"/>

RECEIVED
JAN 22 1980
BIGGER ENGINEERS
INC.



Pi Sta 16+50
 El. 165.40
 1000' VC

Face of abutment
 Sta 16+31.23
 Elev. 157.26



TOTAL BILL OF MATERIAL

Item	Quantity	Unit	Price	Total	Notes
Concrete	2626	cu yd	211.00	554,066	
Reinforcing Steel	106	tons	22.96	2,435.76	
Structural Steel	11	tons	22.96	252.56	
Concrete Slope Protection	229.64	sq yd	1.00	229.64	
1 Bol Metal Lin.	415	lin. ft	0.50	207.50	
Total				557,264.56	

BM 7

BM 7

BM 7

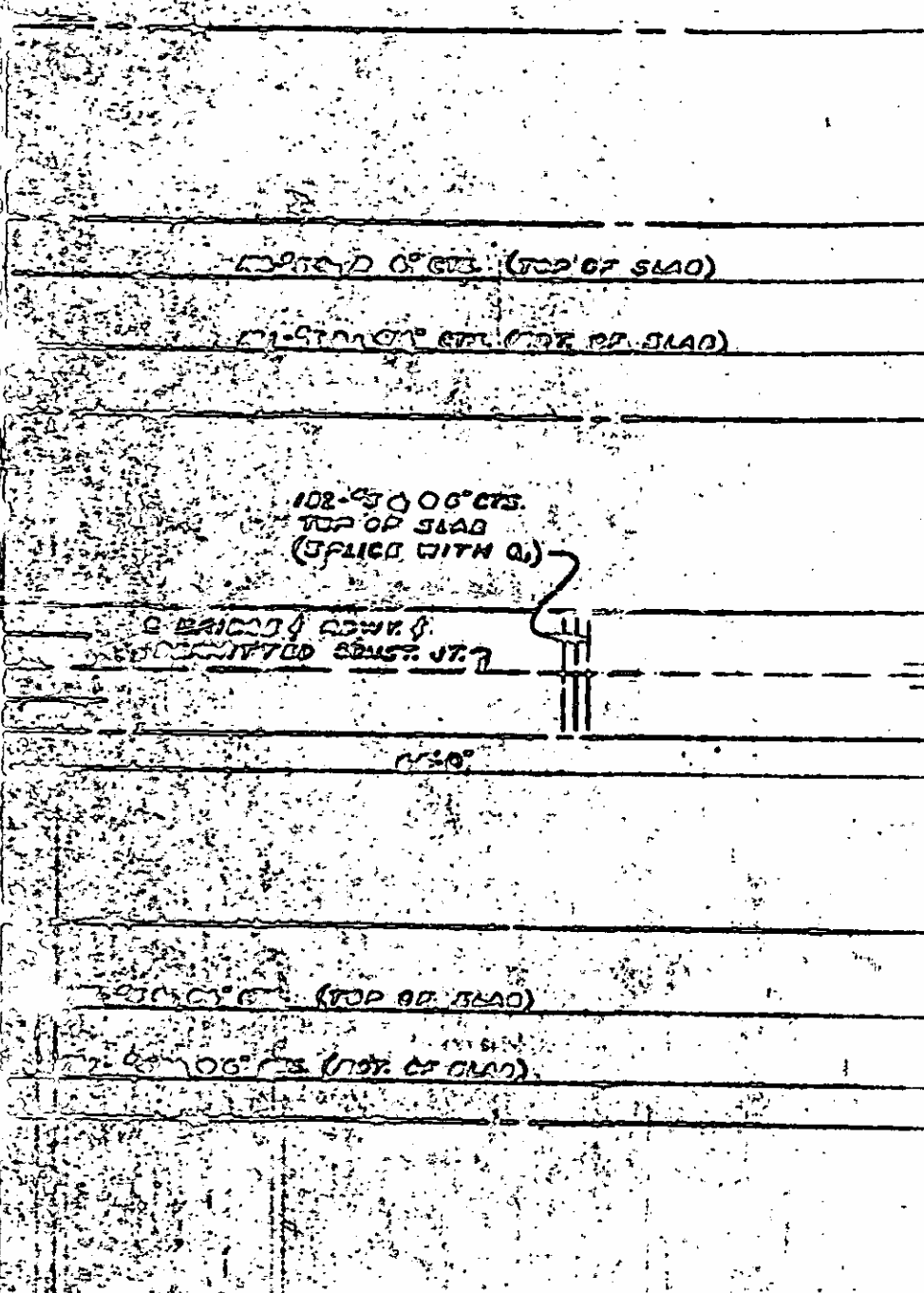
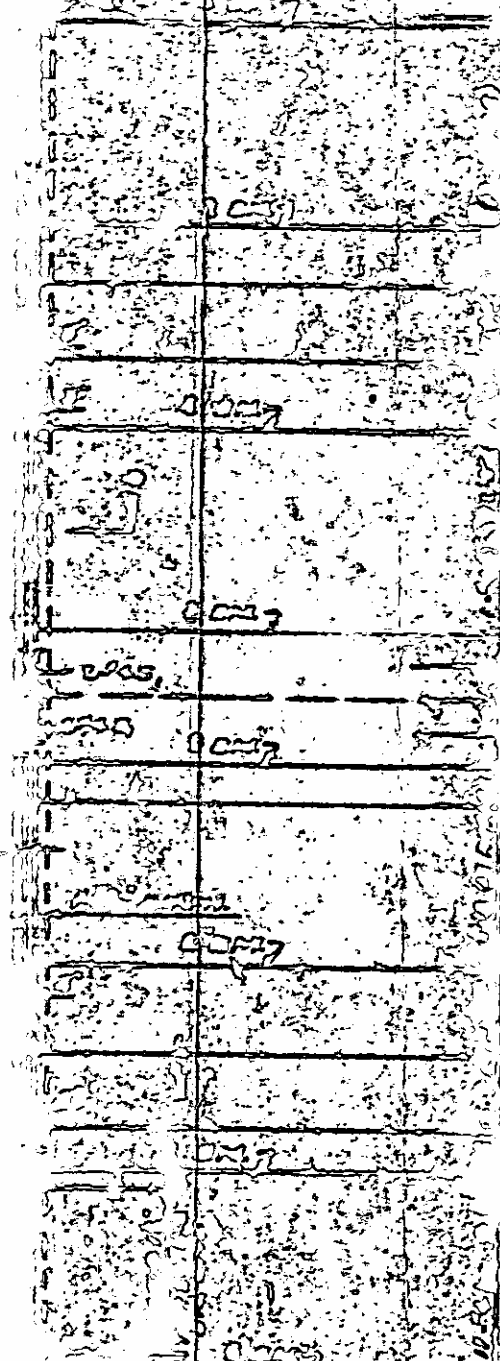
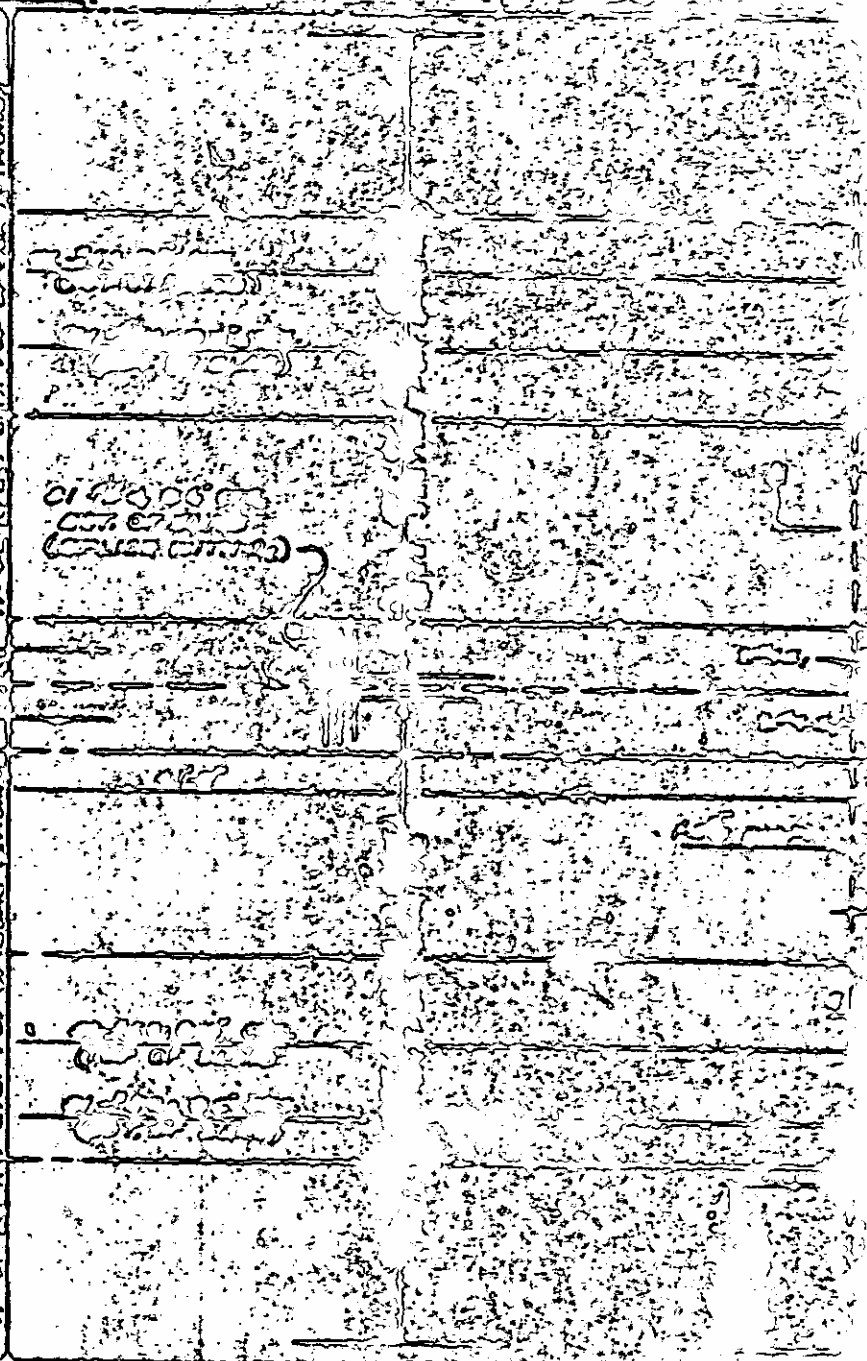
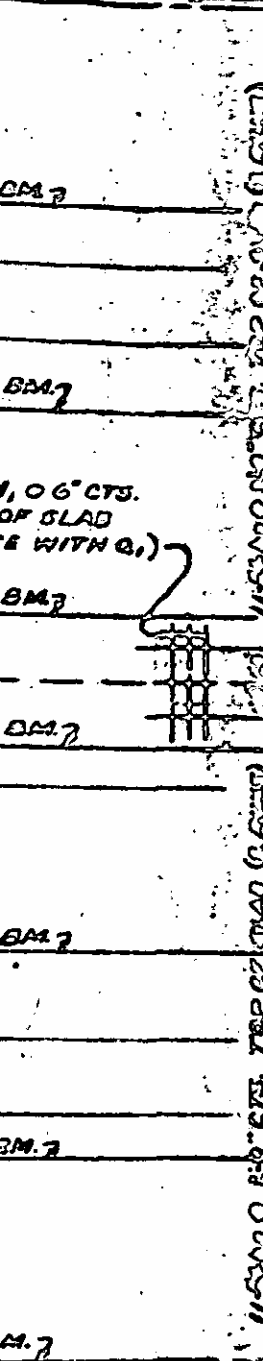
BM 7

BM 7

BM 7

BM 7

BM 7



1.06' CTS. (TOP OF SLAB)

1.50' CTS. (TOP OF SLAB)

1.06' CTS. TOP OF SLAB (SPliced WITH Q1)

2 BARS @ 12" ON C. IDENTIFIED BAR 57. JT. 7

1.50'

1.06' CTS. (TOP OF SLAB)

1.50' CTS. (TOP OF SLAB)

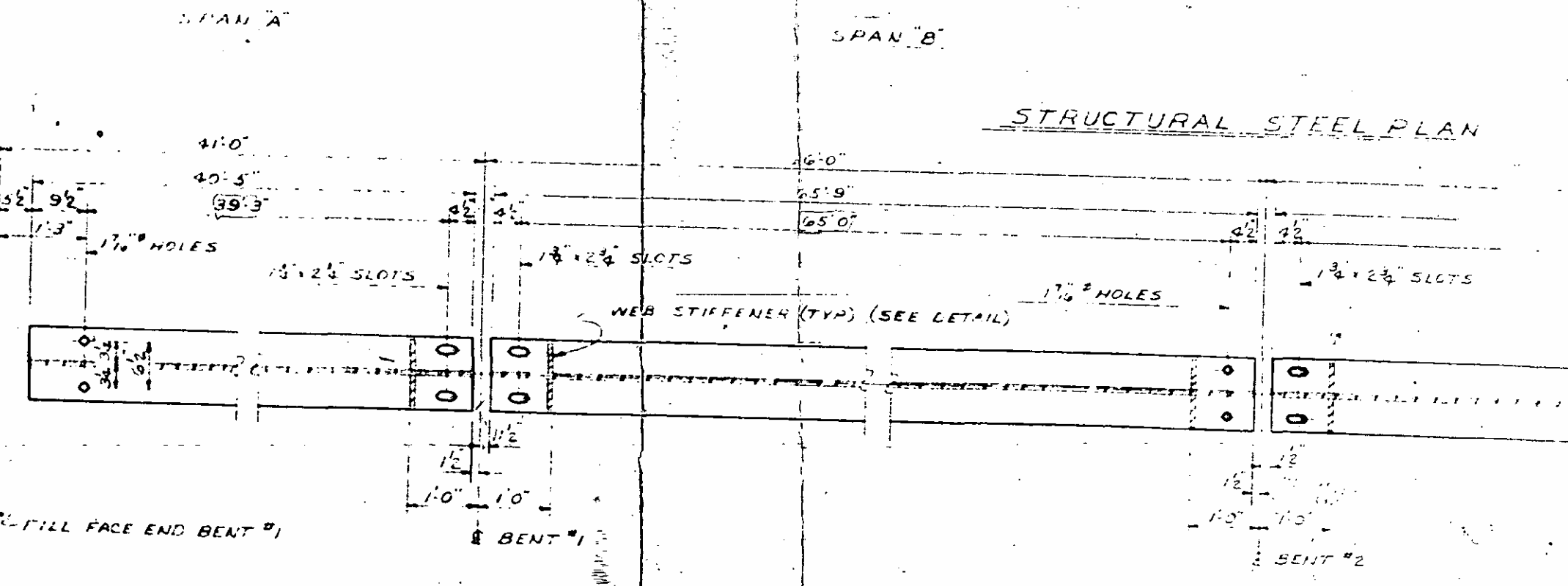
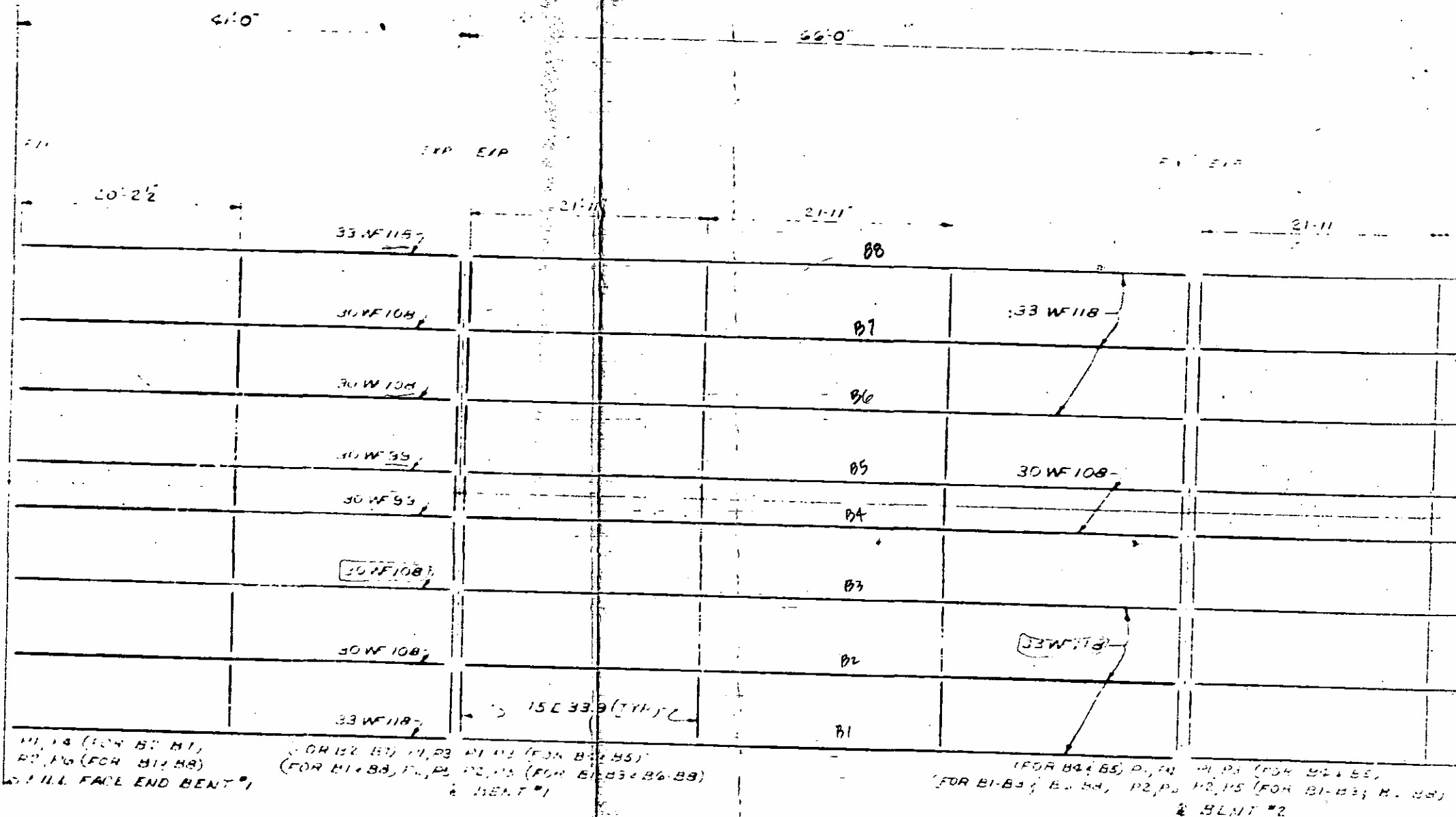
2 BARS UNDER IDENTIFIED RUNNER (LEA SIDE)

1.50' CTS. IN PARAPET (TO SIDE)

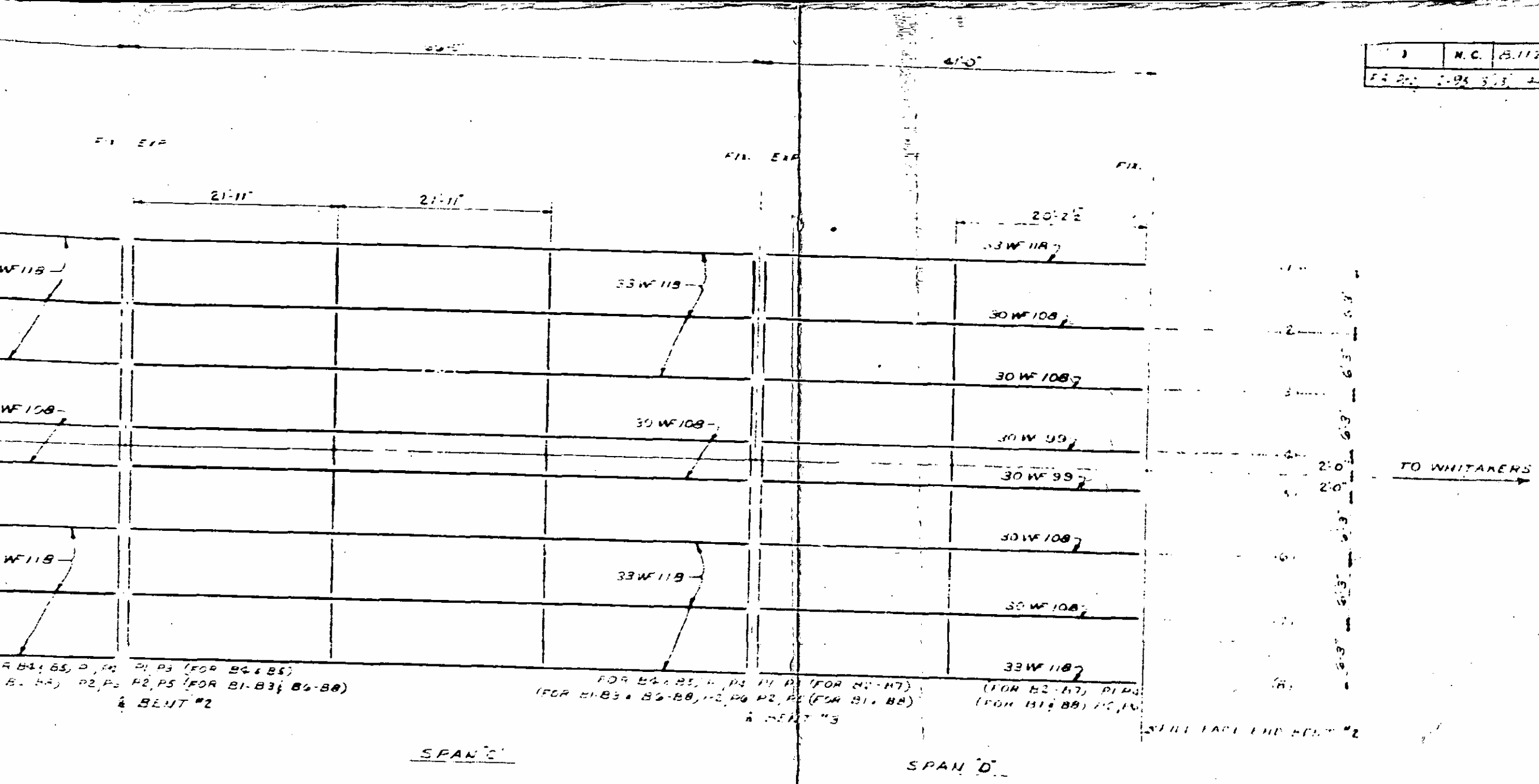
SPAN 8' 0" C.

1.3'

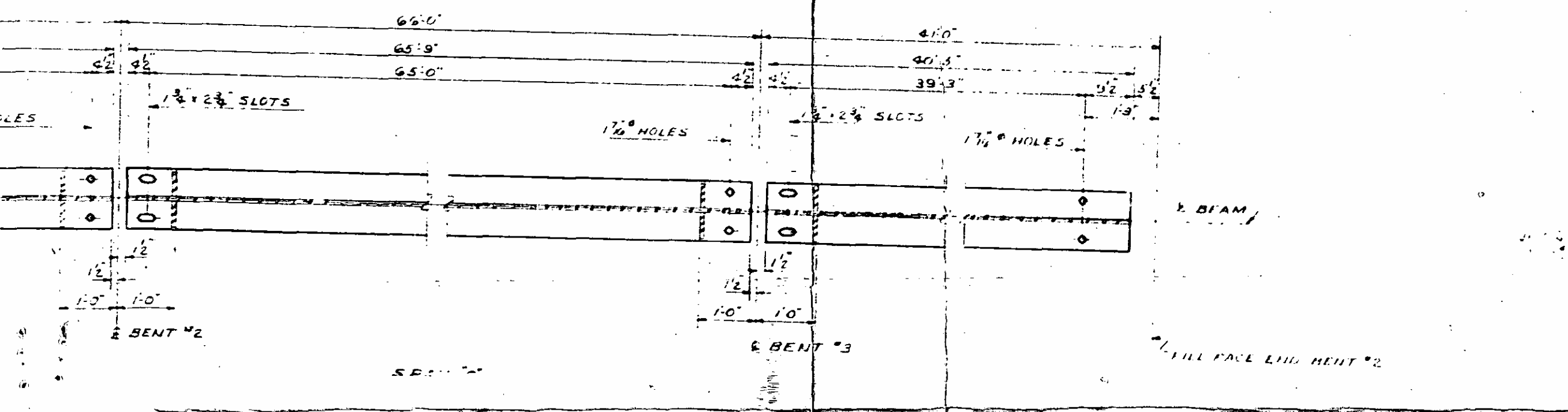
← TO N.C. 48
 BRIDGE ROWY

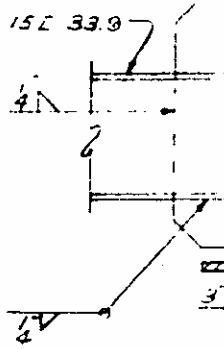
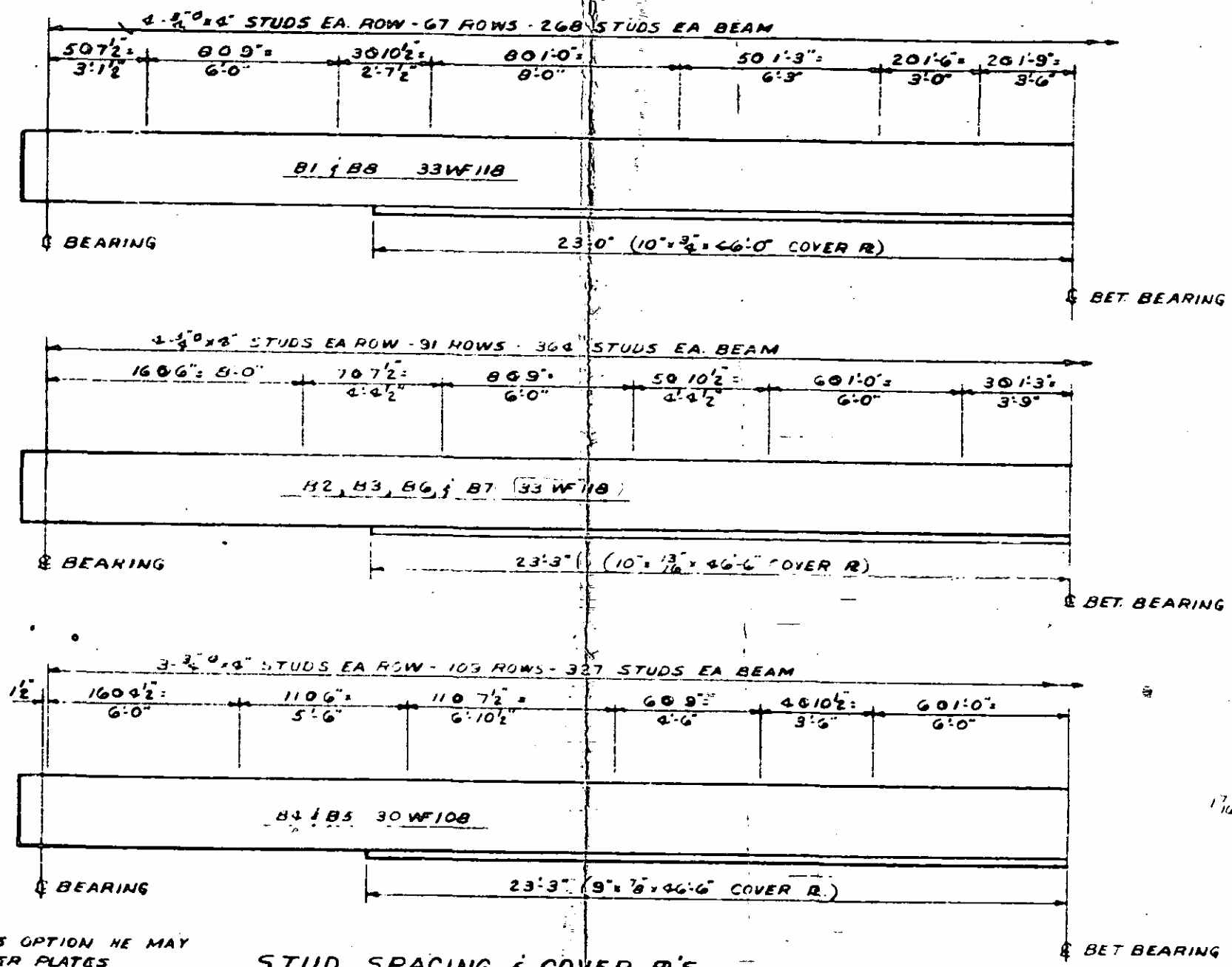


STRUCTURAL STEEL PLAN



STRUCTURAL STEEL PLAN

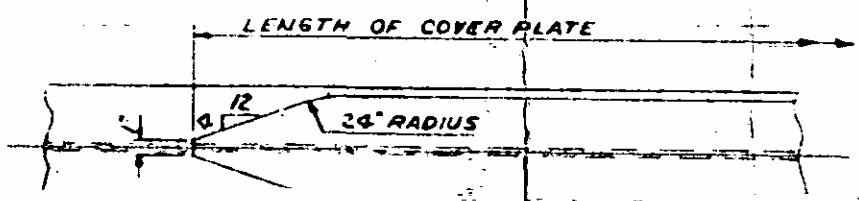




INTERIO
CON

NOTE: AT THE CONTRACTOR'S OPTION HE MAY SUBSTITUTE FOR THE COVER PLATES DESIGNATED ON THE PLANS COVER PLATES OF EQUIVALENT AREA PROVIDED THESE PLATES ARE AT LEAST $\frac{5}{16}$ " IN THICKNESS AND DO NOT EXCEED A WIDTH EQUAL TO THE FLANGE THICKNESS PLUS $\frac{3}{8}$ " THE SIZE OF THE WELD FOR ATTACHING THESE COVER PLATES SHALL BE IN ACCORDANCE WITH THE A.W.S. SPECIFICATIONS.

STUD SPACING & COVER PL'S FOR SPANS B & C ONLY



IN PLANING CUT OF TOOL TO BE IN THIS DIRECTION.

