

DATE: 6/20/2019  
TIME: 6:03:15 PM

USER: stump  
DN: cn=stump, ou=Structures, o=CDOT, c=US, email=stump@cdot.state.nc.us

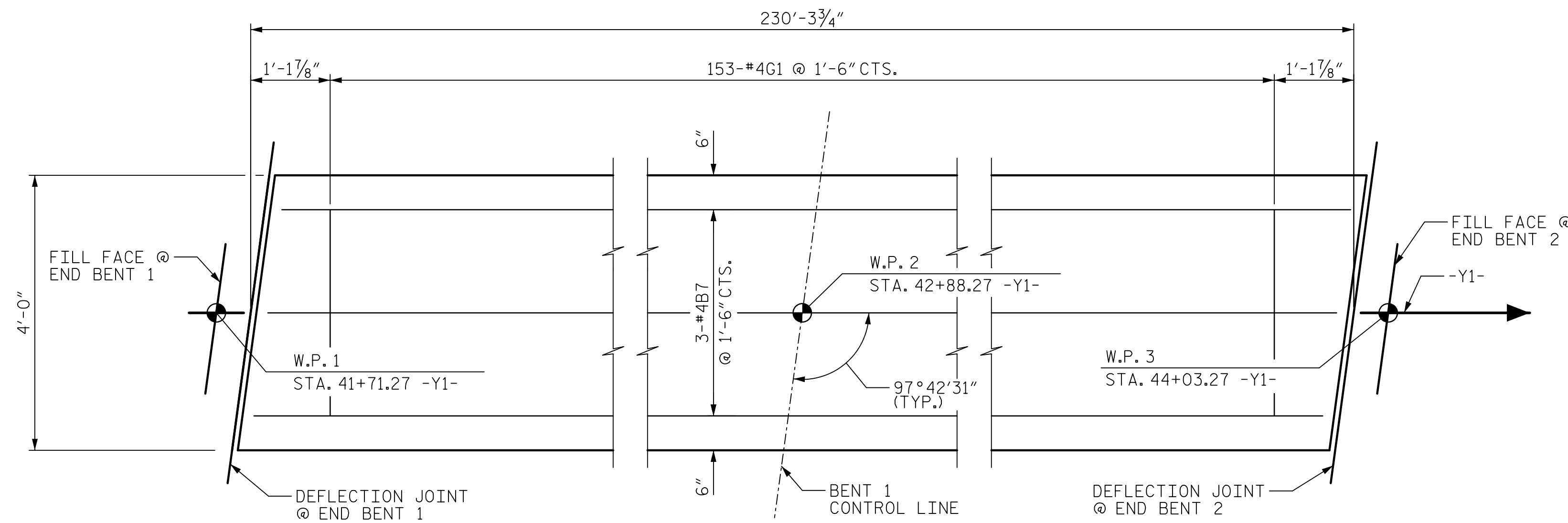
**NOTES:**

THE MONOLITHIC CONCRETE ISLAND IN A CONTINUOUS UNIT SHALL NOT BE CAST UNTIL ALL SLAB CONCRETE IN THAT UNIT HAS BEEN CAST AND HAS REACHED A MINIMUM COMPRESSIVE STRENGTH OF 3,000 PSI.

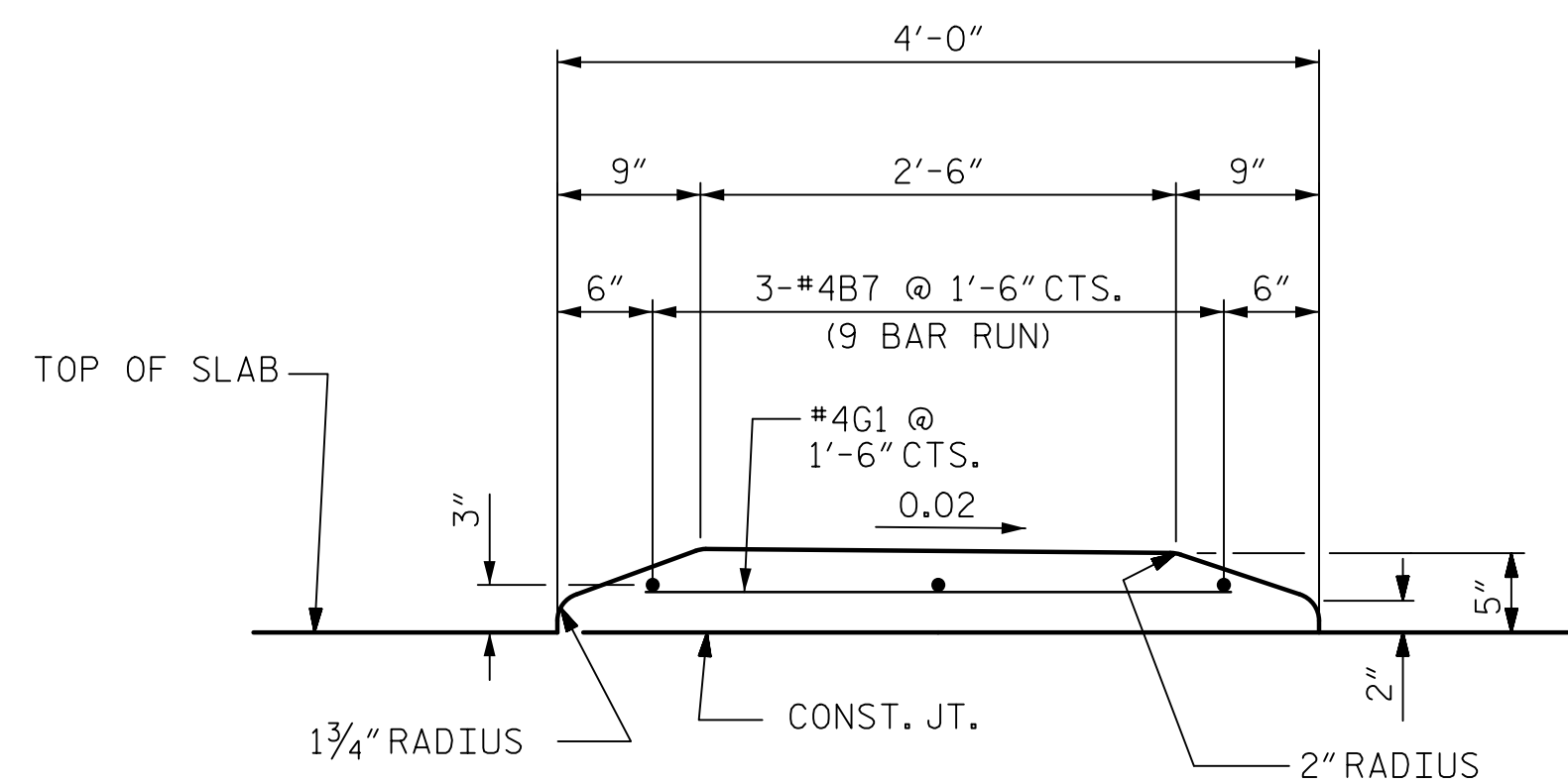
ALL REINFORCING STEEL IN THE MONOLITHIC CONCRETE ISLAND SHALL BE EPOXY COATED.

GROOVED CONTRACTION JOINTS, 1/2" IN DEPTH, SHALL BE TOOLED IN ALL EXPOSED FACES OF THE MONOLITHIC CONCRETE ISLAND IN ACCORDANCE WITH ARTICLE 825-10(B) OF THE STANDARD SPECIFICATIONS. THE CONTRACTION JOINTS SHALL BE LOCATED AT A SPACING OF 8 FEET TO 10 FEET BETWEEN JOINTS IN DECK. NO CONTRACTION JOINTS WILL BE REQUIRED FOR SEGMENTS LESS THAN 10 FEET IN LENGTH.

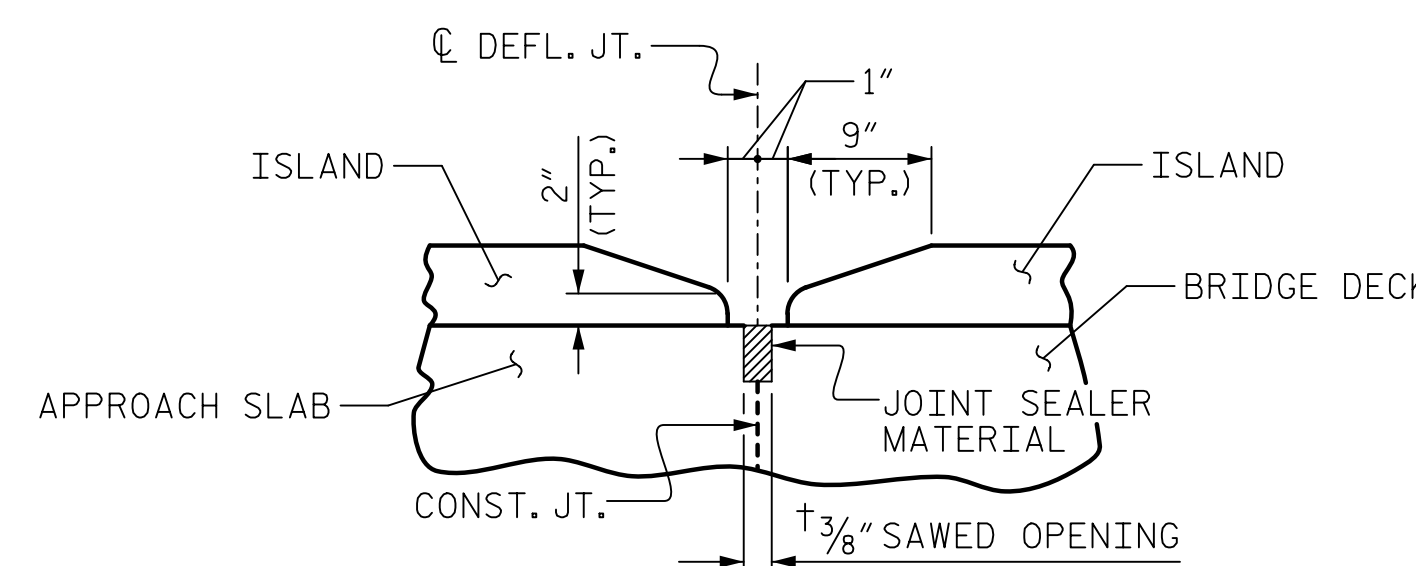
PAYMENT FOR THE MONOLITHIC CONCRETE ISLAND SHALL BE INCLUDED IN UNIT PRICE FOR "REINFORCED CONCRETE DECK SLAB".



SPAN A  
SPAN B  
**PLAN OF MONOLITHIC CONCRETE ISLAND**



**SECTION THROUGH MONOLITHIC CONCRETE ISLAND**



**DETAILS AT DEFLECTION JOINT**

† NORMAL TO END BENT

PROJECT NO. B-5980  
NASH COUNTY  
STATION: 42+56.82 -Y1-

DRAWN BY : T.B. STUMP DATE : 2/2019  
CHECKED BY : J.C. MORRISON DATE : 2/2019  
DESIGNED BY : T.B. STUMP DATE : 2/2019  
DESIGN CHECKED BY : J.C. MORRISON DATE : 2/2019

DOCUMENT NOT CONSIDERED  
FINAL UNLESS ALL  
SIGNATURES COMPLETED

**AECOM**  
AECOM TECHNICAL SERVICES OF NC, INC.  
701 CORPORATE CENTER DRIVE, SUITE 475  
RALEIGH, NC 27607  
(919) 854-6200 www.aecom.com  
AECOM License No. F-0342

6/21/2019  
NORTH CAROLINA  
PROFESSIONAL  
SEAL  
030474  
ENGINEER  
JOHN C. MORRISON

John C. Morrison  
A2PDE142C82F4A8

STATE OF NORTH CAROLINA  
**DEPARTMENT OF TRANSPORTATION**  
RALEIGH  
SUPERSTRUCTURE  
**MONOLITHIC CONCRETE ISLAND DETAILS**

REVISIONS					
NO.	BY:	DATE:	NO.	BY:	DATE:
1			3		
2			4		

SHEET NO. S-10  
TOTAL SHEETS 33