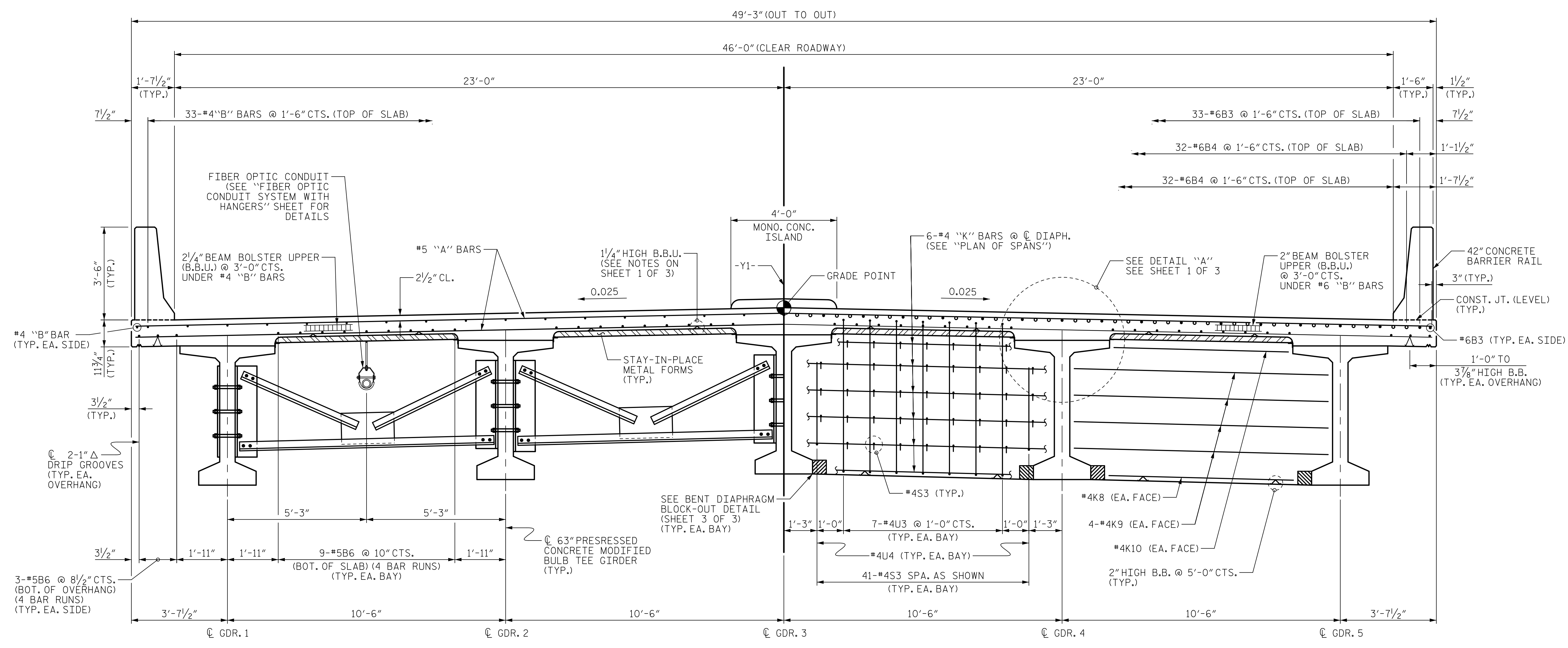


DATE: 3/13/2020
TIME: 3:25:54 PM

USER: stump
D:\Users\stump\OneDrive\Projects\60557176 - B-5980\900_GAD_GIS\900_CAD\00_NCDDT_TrimStructures\04 Drawings\400_LL_S06_B5980_SMU_T52.dgn



PARTIAL TYPICAL SECTION
(SHOWING INTERMEDIATE DIAPHRAGMS)

PARTIAL TYPICAL SECTION
(SHOWING CONTINUOUS FOR LIVE LOAD BENT DIAPHRAGMS)

TYPICAL SECTION

NOTES:

FOR INTERMEDIATE STEEL DIAPHRAGM DETAILS SEE "INTERMEDIATE STEEL DIAPHRAGMS FOR 63" MODIFIED BULB TEE PRESTRESSED CONCRETE GIRDERS" SHEET

PROJECT NO. B-5980
NASH COUNTY
STATION: 42+56.82 -Y1-

SHEET 2 OF 3

DRAWN BY : T.B. STUMP	DATE : 02/2019
CHECKED BY : J.C. MORRISON	DATE : 02/2019
DESIGNED BY : T.B. STUMP	DATE : 02/2019
DESIGN CHECKED BY : J.C. MORRISON	DATE : 02/2019

DOCUMENT NOT CONSIDERED FINAL UNLESS ALL SIGNATURES COMPLETED

AECOM
AECOM TECHNICAL SERVICES OF NC, INC.
701 CORPORATE CENTER DRIVE, SUITE 475
RALEIGH, NC 27607
(919) 854-6200 www.aecom.com
AECOM License No. F-0342

3/15/2020
NORTH CAROLINA PROFESSIONAL SEAL 030474
ENGINEER JOHN C. MORRISON
John C. Morrison
A2FDE142C82F4AB

STATE OF NORTH CAROLINA
DEPARTMENT OF TRANSPORTATION
RALEIGH
SUPERSTRUCTURE
TYPICAL SECTION

REVISIONS					
NO.	BY:	DATE:	NO.	BY:	DATE:
1			3		
2			4		

SHEET NO. S-06
TOTAL SHEETS 34