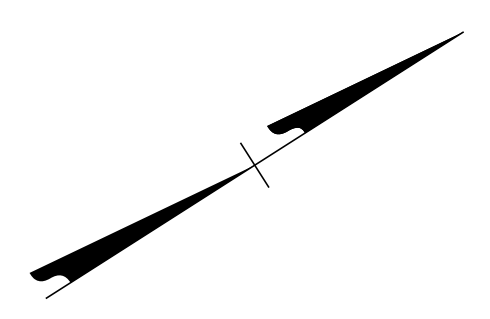
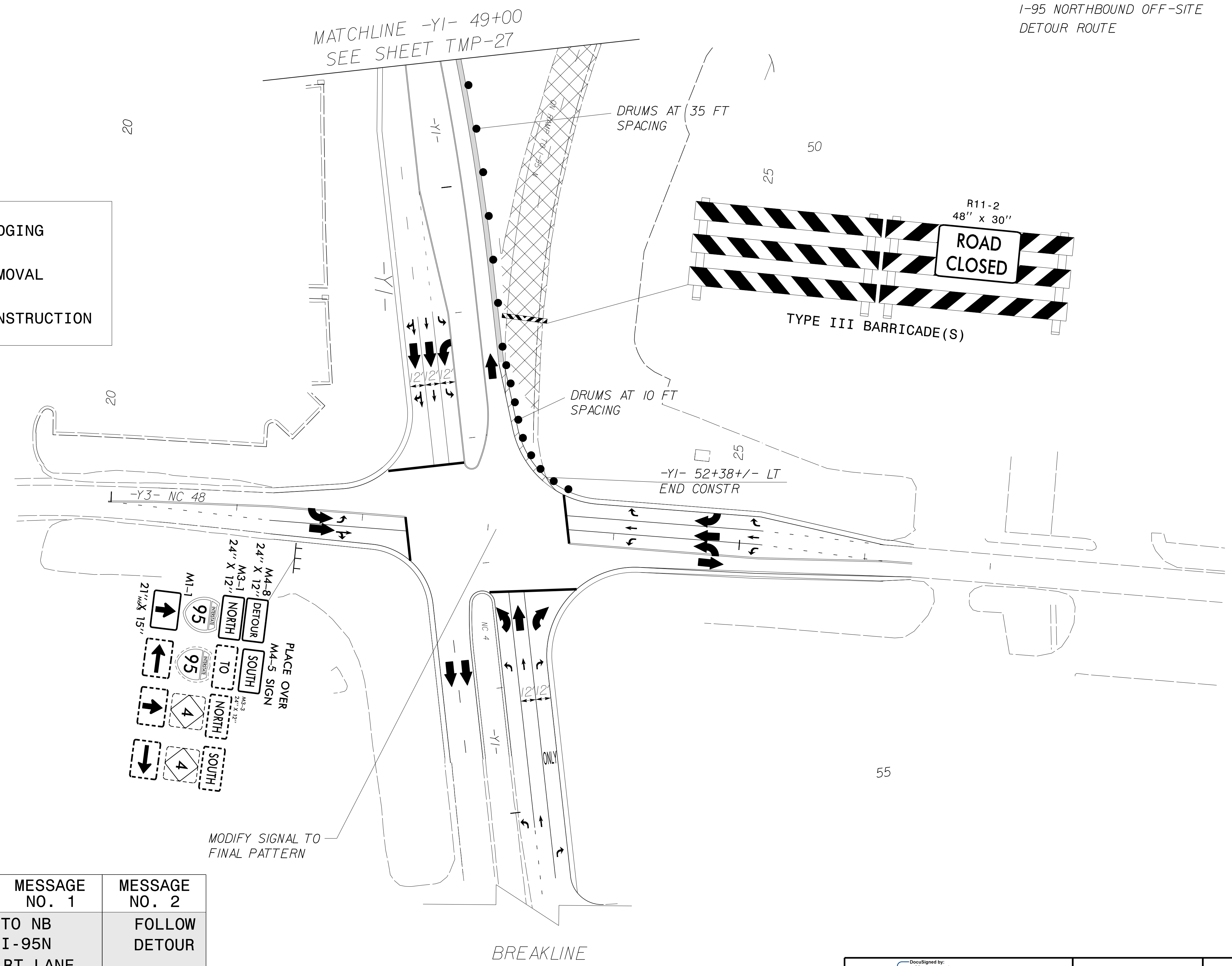


SEE SHEET TMP-26 FOR
I-95 NORTHBOUND OFF-SITE
DETOUR ROUTE



	PAVEMENT WEDGING
	PAVEMENT REMOVAL
	PREVIOUS CONSTRUCTION



MESSAGE NO. 1	MESSAGE NO. 2
TO NB I-95N RT LANE	FOLLOW DETOUR

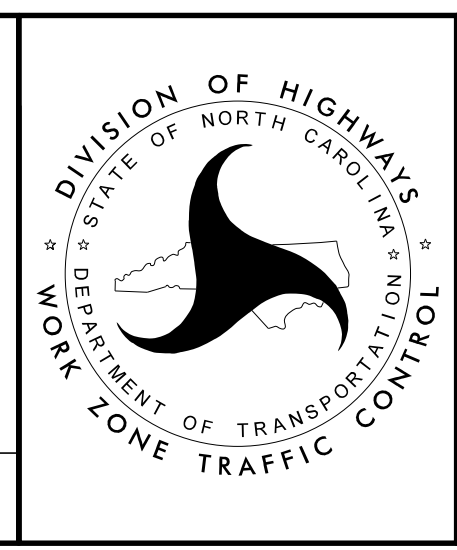
CHANGEABLE MESSAGE SIGN

LOCATE 1/2 MILE IN ADVANCE OF INTERSECTION OR AS DIRECTED BY THE ENGINEER

APPROVED: *Jeffrey A. Koontz*
DATE: 4/15/2020

DocuSigned by:
Jeffrey A. Koontz
4B4BFECDD284F7...

DOCUMENT NOT CONSIDERED FINAL UNLESS ALL SIGNATURES COMPLETED



**PHASE IV
-Y1- DETAILS**

2/21/2020
 R:\Traffic\TrafficControl\B5980.TC_TMP_28_Phase IV_Y1.dgn
 User: jeff.koontz