

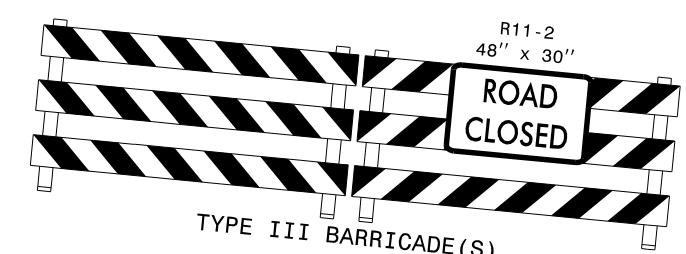
-RPD- 14+15+/-
 BEGIN CONSTRUCTION
 -L- 60+40+/-
 BEGIN MILL & OVERLAY

-RPD- 10+00+/-
 -L- 64+50+/-
 END MILL & OVERLAY

-RPD- 21+25+/-
 END CONSTR

-YI- 48+86+/- LT
 BEGIN CONSTR

SEE TMP-26 FOR
 NORTHBOUND I-95 RAMP
 OFF-SITE DETOUR



-YI- 52+38+/- LT
 END CONSTR

- WORK ZONE
- PAVEMENT WEDGING
- PAVEMENT REMOVAL
- PREVIOUS CONSTRUCTION
- MILL & OVERLAY

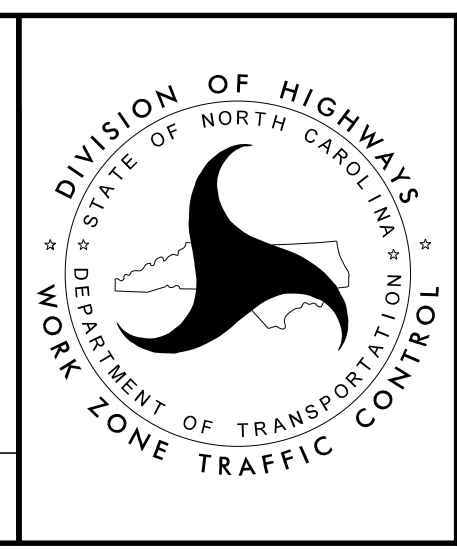
MESSAGE NO. 1	MESSAGE NO. 2
TO NB I-95N RT LANE	FOLLOW DETOUR
CHANGEABLE MESSAGE SIGN	

APPROVED: *Jeffrey D. Koontz*
 DATE: 4/15/2020

DocuSigned by:
 Jeffrey D. Koontz
 848BFEC0228AF7

SEAL 018122
 JEFFREY D. KOONTZ
 PROFESSIONAL ENGINEER
 NORTH CAROLINA

DOCUMENT NOT CONSIDERED FINAL UNLESS ALL SIGNATURES COMPLETED



PHASE IV OVERVIEW

2/21/2020
 R:\TrafficControl\TrafficControl\B5980.TC_TMP_25_Phase IV_Overview.dgn
 User: jeff.koontz