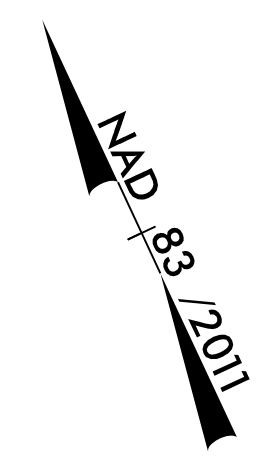
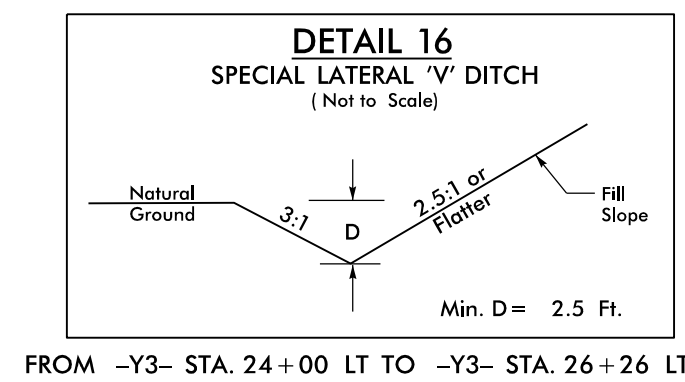
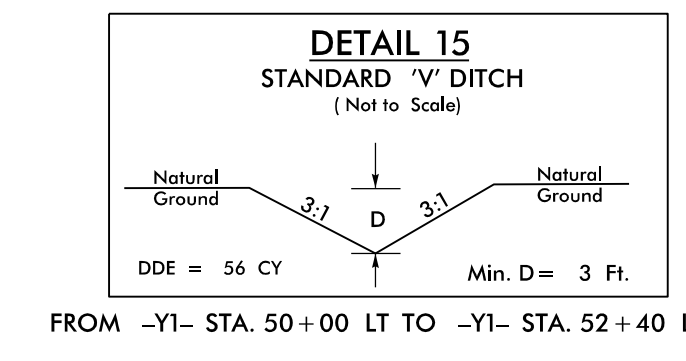
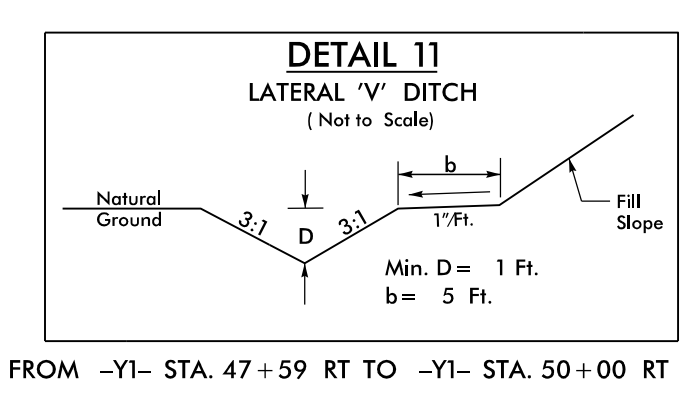
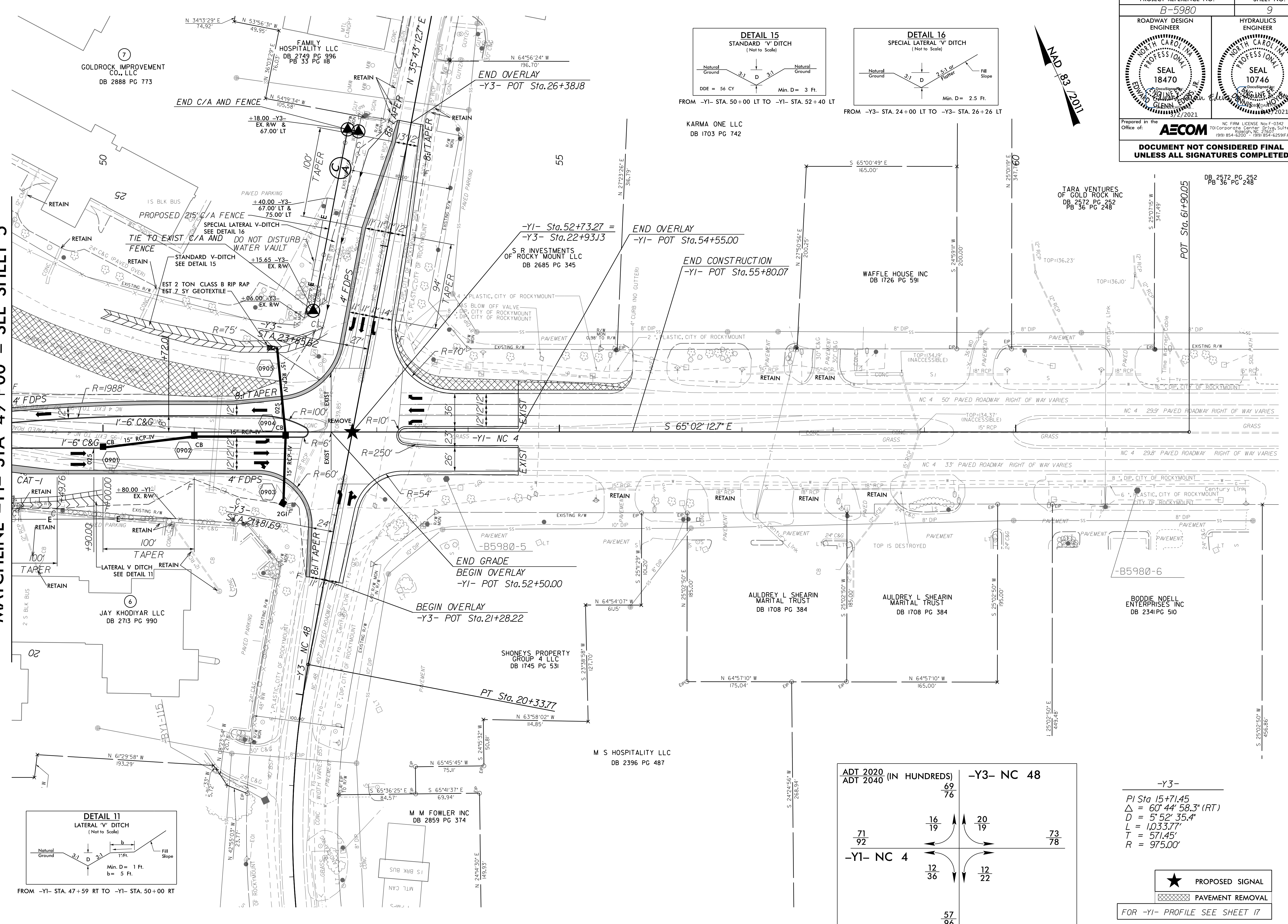


5/14/1999

PROJECT REFERENCE NO. B-5980	SHEET NO. 9
ROADWAY DESIGN ENGINEER	HYDRAULICS ENGINEER
Prepared in the Office of: AECOM	
<small>NC FIRM LICENSE No: F-0342 701 Corporate Center Drive, Suite 475 Raleigh, NC 27603 (919) 854-6200 / (919) 854-6291 (FAX)</small>	
DOCUMENT NOT CONSIDERED FINAL UNLESS ALL SIGNATURES COMPLETED	



MATCHLINE -Y1- STA 49+00 - SEE SHEET 5



ADT 2020 (IN HUNDREDS)		-Y3- NC 48	
		69	76
		16	20
71	19	19	73
-Y1- NC 4	12	12	78
	36	22	
		57	96

-Y3-
 PI Sta 15+71.45
 $\Delta = 60^\circ 44' 58.3''$ (RT)
 $D = 5^\circ 52' 35.4''$
 $L = 1,033.77'$
 $T = 571.45'$
 $R = 975.00'$

★ PROPOSED SIGNAL
 [Hatched Box] PAVEMENT REMOVAL
 FOR -Y1- PROFILE SEE SHEET 17