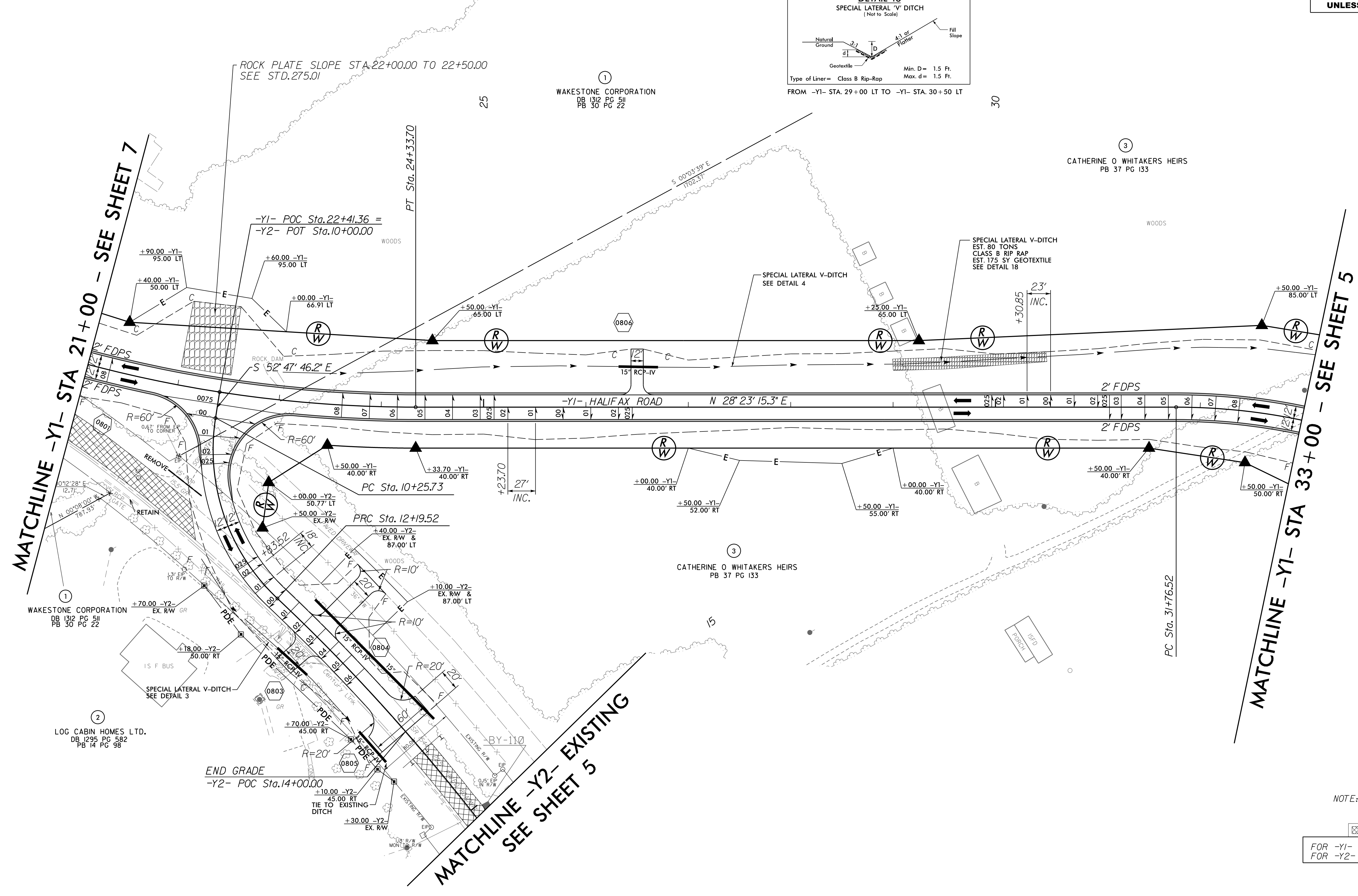
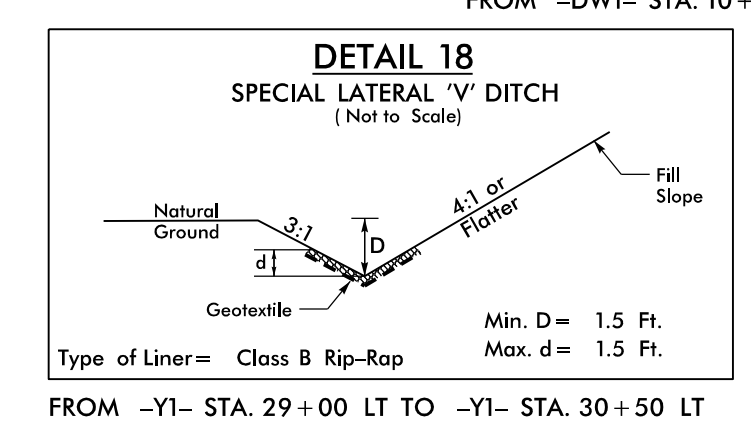
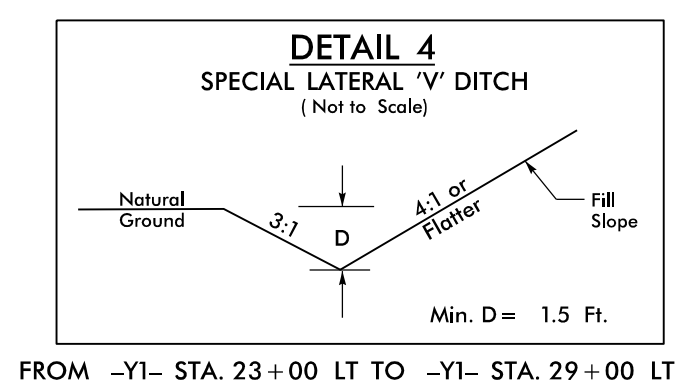
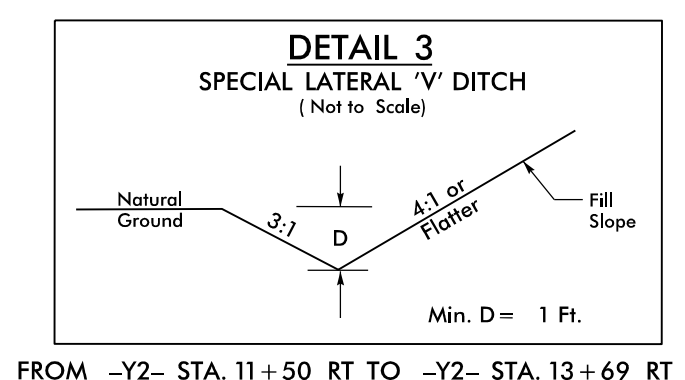


5/14/2021
R:\Road\A\B59800_rdy_esh08.dgn
3/1/2021

PROJECT REFERENCE NO. B-5980	SHEET NO. 8
ROADWAY DESIGN ENGINEER SEAL 18470	HYDRAULICS ENGINEER SEAL 10746
NORTH CAROLINA PROFESSIONAL SEAL EDWARD G. GLENN, III 3/2/2021	
Prepared in the Office of: AECOM NC FIRM LICENSE No. F-0342 701 Corporate Center Drive, Suite 475 Raleigh, NC 27601 (919) 854-6200 • (919) 854-6259 (FAX)	
DOCUMENT NOT CONSIDERED FINAL UNLESS ALL SIGNATURES COMPLETED	



-Y1-		-Y2-	
PI Sta 20+95.40	PI Sta 37+41.69	PI Sta 11+30.99	PI Sta 18+48.15
$\Delta = 31^{\circ} 51' 37.8''$ (LT)	$\Delta = 86^{\circ} 34' 32.0''$ (RT)	$\Delta = 55^{\circ} 30' 55.2''$ (LT)	$\Delta = 37^{\circ} 09' 42.4''$ (RT)
$D = 4' 35'' 01.2''$	$D = 9' 32'' 57.5''$	$D = 28' 38'' 52.4''$	$D = 3' 03'' 50.2''$
$L = 695.09'$	$L = 906.62'$	$L = 193.79'$	$L = 1,212.87'$
$T = 356.79'$	$T = 565.17'$	$T = 105.26'$	$T = 628.63'$
$R = 1,250.00'$	$R = 600.00'$	$R = 200.00'$	$R = 1,870.00'$
$e = 8\%$	$e = 8\%$	$e = 2.5\%$	$e =$ MATCH EXISTING
RUNOFF = 216'	RUNOFF = 184'	RUNOFF = 45'	DS = 25 MPH
	DS = 45 MPH		



NOTE: ALL DRIVEWAY RADII ARE 10' UNLESS OTHERWISE NOTED

PAVEMENT REMOVAL

FOR -Y1- PROFILE SEE SHEET 16
FOR -Y2- PROFILE SEE SHEET 18