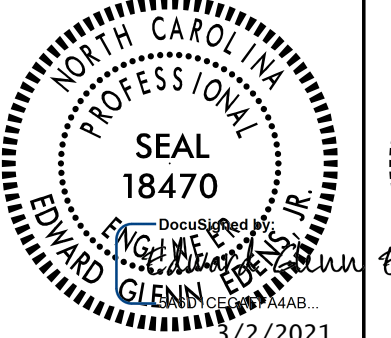



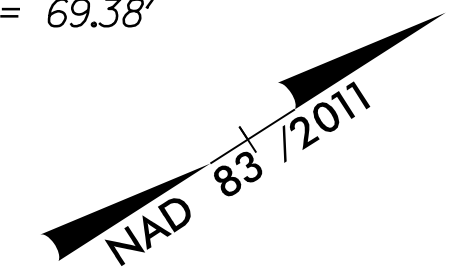
5/14/2021

R:\Roadway\Proj\B5980_rdy_psh\06.dgn

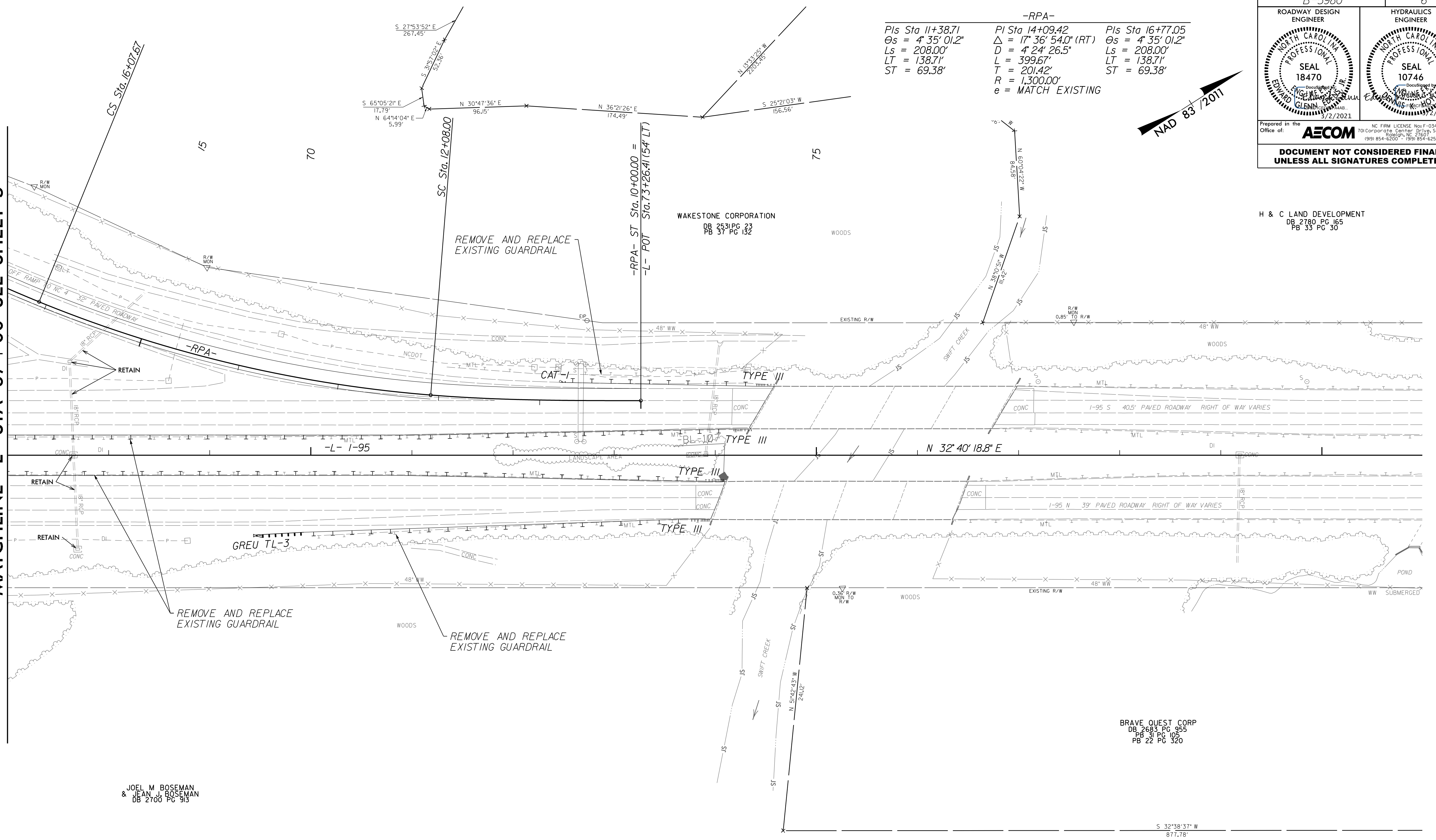
PROJECT REFERENCE NO. B-5980	SHEET NO. 6
ROADWAY DESIGN ENGINEER 	HYDRAULICS ENGINEER 
Prepared in the Office of: AECOM	
<small>NC FIRM LICENSE No. F-0342 701 Corporate Center, Suite 4175 1901 S. Salisbury Blvd., Suite 4175 Charlotte, NC 28204 (919) 854-6200 • (919) 854-6259 (FAX)</small>	
DOCUMENT NOT CONSIDERED FINAL UNLESS ALL SIGNATURES COMPLETED	

-RPA-

Pls Sta 11+38.71 Os = 4' 35' 01.2" Ls = 208.00' LT = 138.71' ST = 69.38'	PI Sta 14+09.42 Δ = 17' 36' 54.0" (RT) D = 4' 24' 26.5" L = 399.67' T = 201.42' R = 1,300.00' e = MATCH EXISTING	Pls Sta 16+77.05 Os = 4' 35' 01.2" Ls = 208.00' LT = 138.71' ST = 69.38'
--	--	--



MATCHLINE -L- STA 67+00 SEE SHEET 5



JOEL M BOSEMAN
& JEAN J BOSEMAN
DB 2700 PG 913

NOTE: SHEET PROVIDED FOR REFERENCE. PAVEMENT MARKING AND TRAFFIC CONTROL WORK ONLY WILL BE COMPLETED IN THIS AREA.
FOR -L- PROFILE SEE SHEET 13
FOR -RPA- PROFILE SEE SHEET 14