

5/14/19

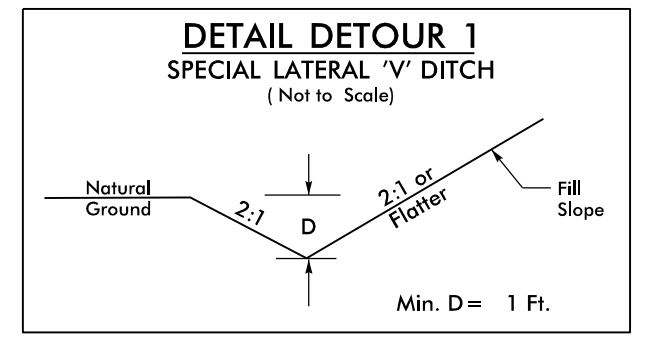
PROJECT REFERENCE NO. <b>B-5980</b>	SHEET NO. <b>2B-4</b>
ROADWAY DESIGN ENGINEER	HYDRAULICS ENGINEER
Prepared in the Office of: <b>AECOM</b>	
DOCUMENT NOT CONSIDERED FINAL UNLESS ALL SIGNATURES COMPLETED	

**-RPC\_DET-**  
 PI Sta 10+49.32 Δ = 37°19'55.3" (LT)  
 D = 39°14'37.3"  
 L = 95.13'  
 T = 49.32'  
 R = 146.00'  
 e = MATCH EXISTING

**-RPC\_DET-**  
 PI Sta 12+25.41 Δ = 52°52'48.3" (RT)  
 D = 21°52'07.0"  
 L = 241.81'  
 T = 130.29'  
 R = 262.00'  
 e = 2%

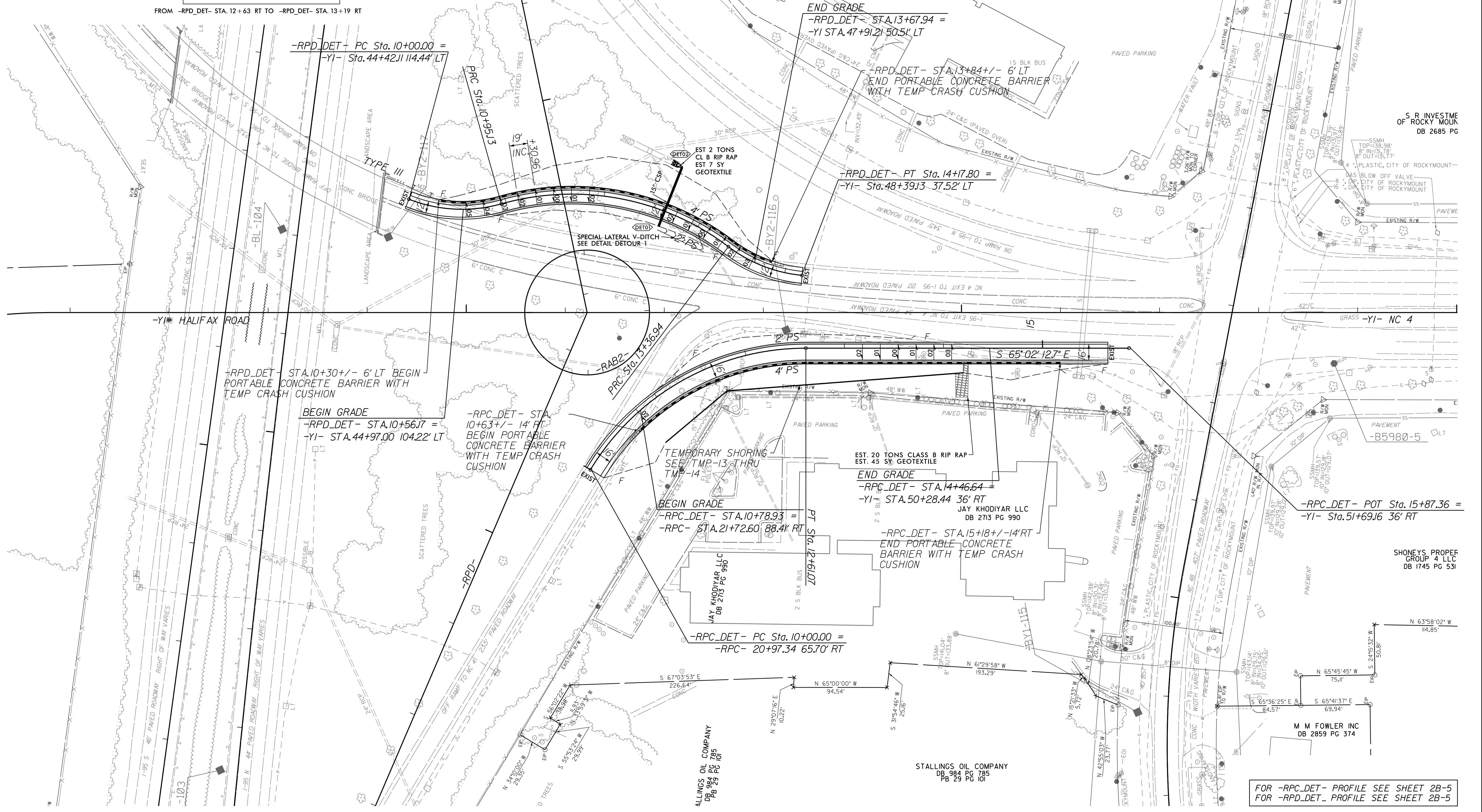
**-RPC\_DET-**  
 PI Sta 13+78.43 Δ = 31°43'58.4" (LT)  
 D = 39°14'37.3"  
 L = 80.86'  
 T = 41.50'  
 R = 146.00'  
 e = MATCH EXISTING

**-RPC\_DET-**  
 PI Sta 11+43.39 Δ = 58°53'29.7" (RT)  
 D = 22°33'26.6"  
 L = 261.07'  
 T = 143.39'  
 R = 254.00'  
 e = 2%



FROM -RPD\_DET- STA. 12+63 RT TO -RPD\_DET- STA. 13+19 RT

**-RPC\_DET-**  
**-RPD\_DET-**



FOR -RPC\_DET- PROFILE SEE SHEET 2B-5  
 FOR -RPD\_DET- PROFILE SEE SHEET 2B-5

3/1/2021 10:59:00 AM  
 R:\Roadway\B5980\_rdy-det.pln-2B-4.dgn