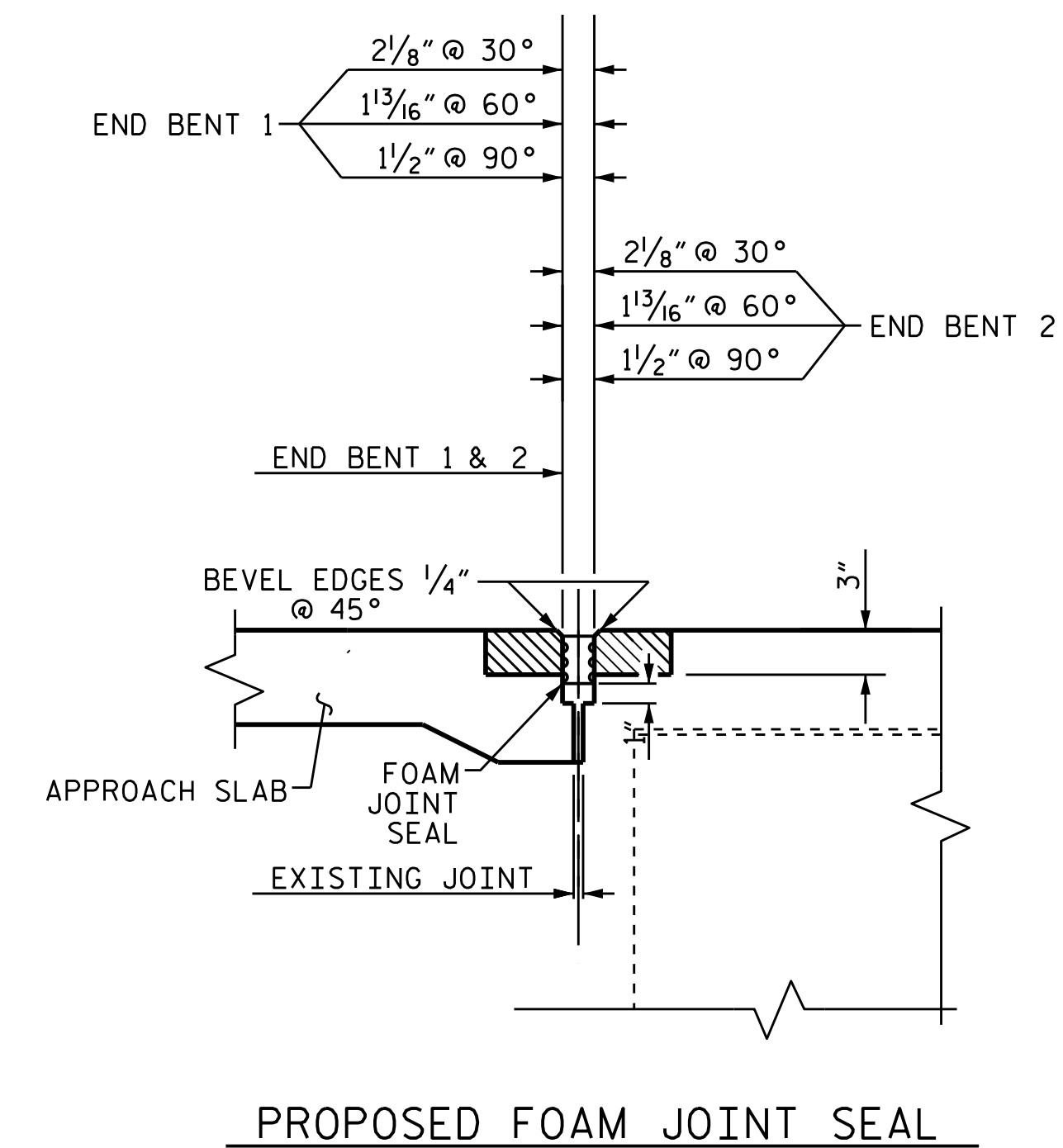
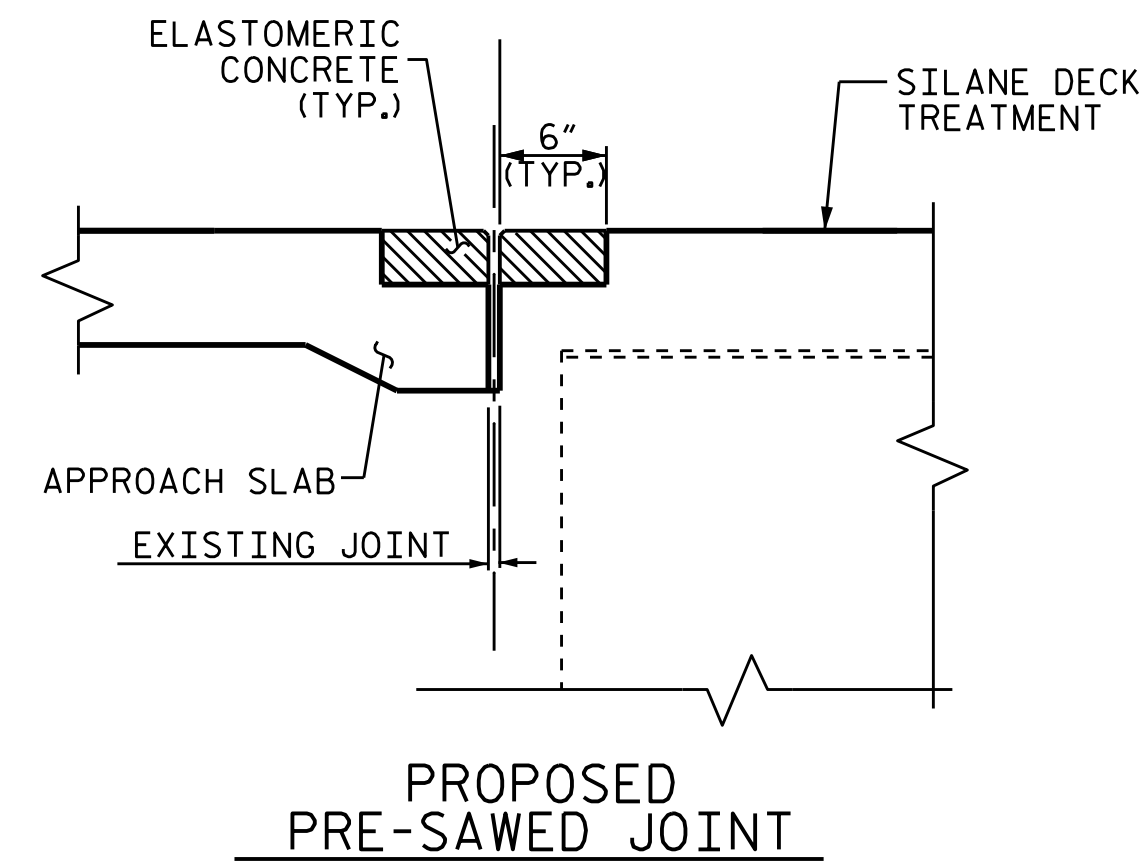
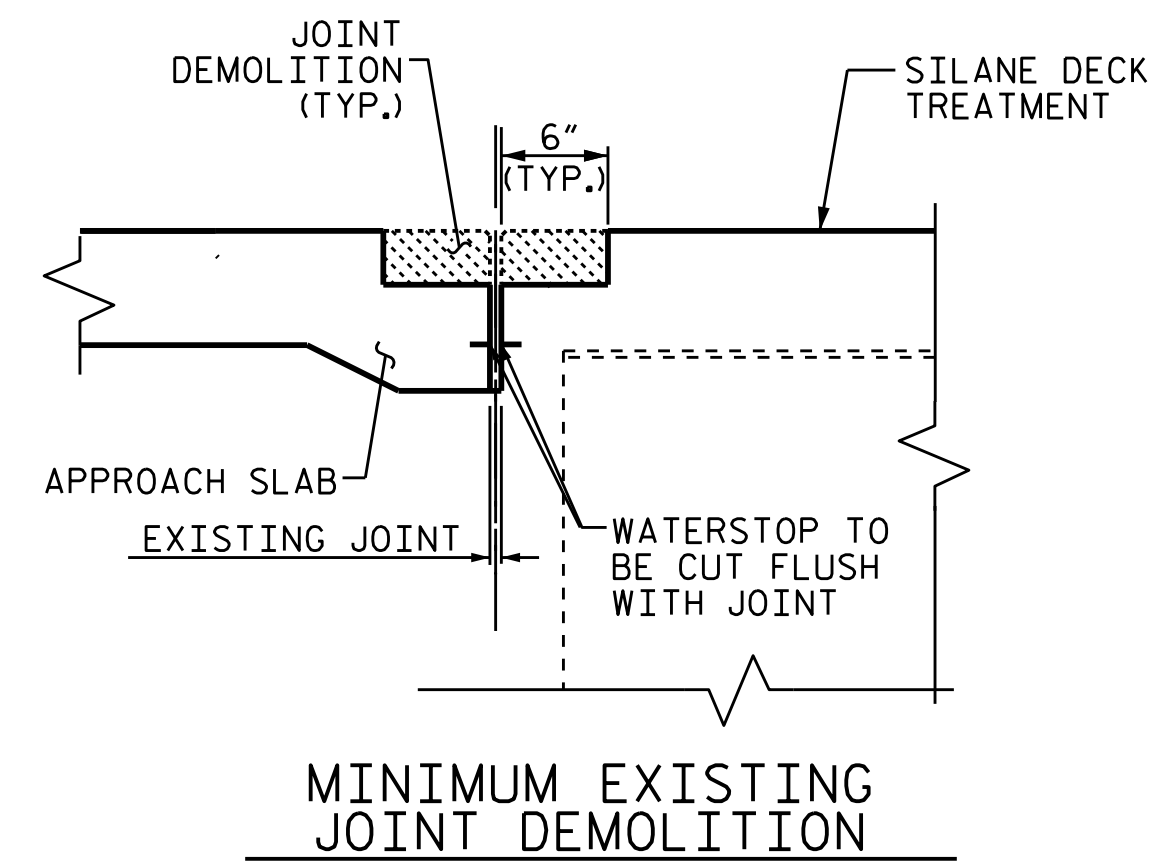
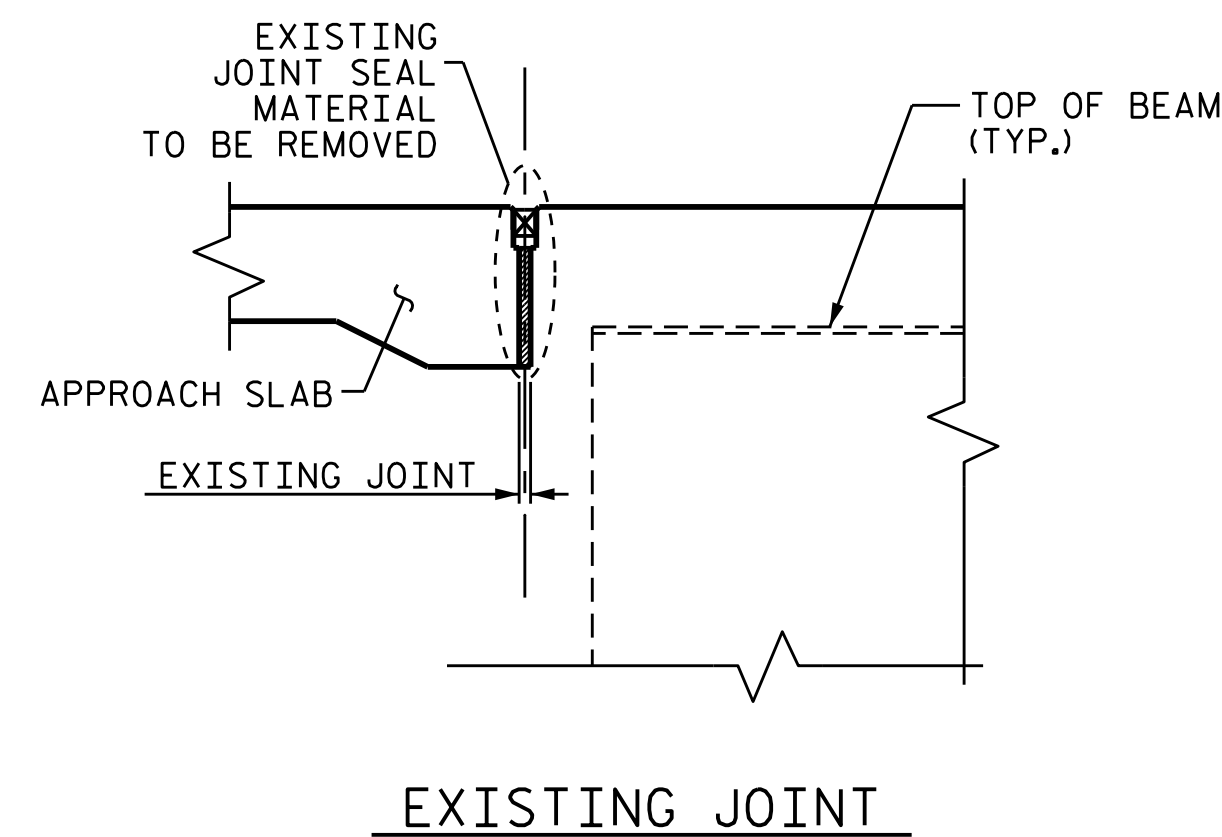
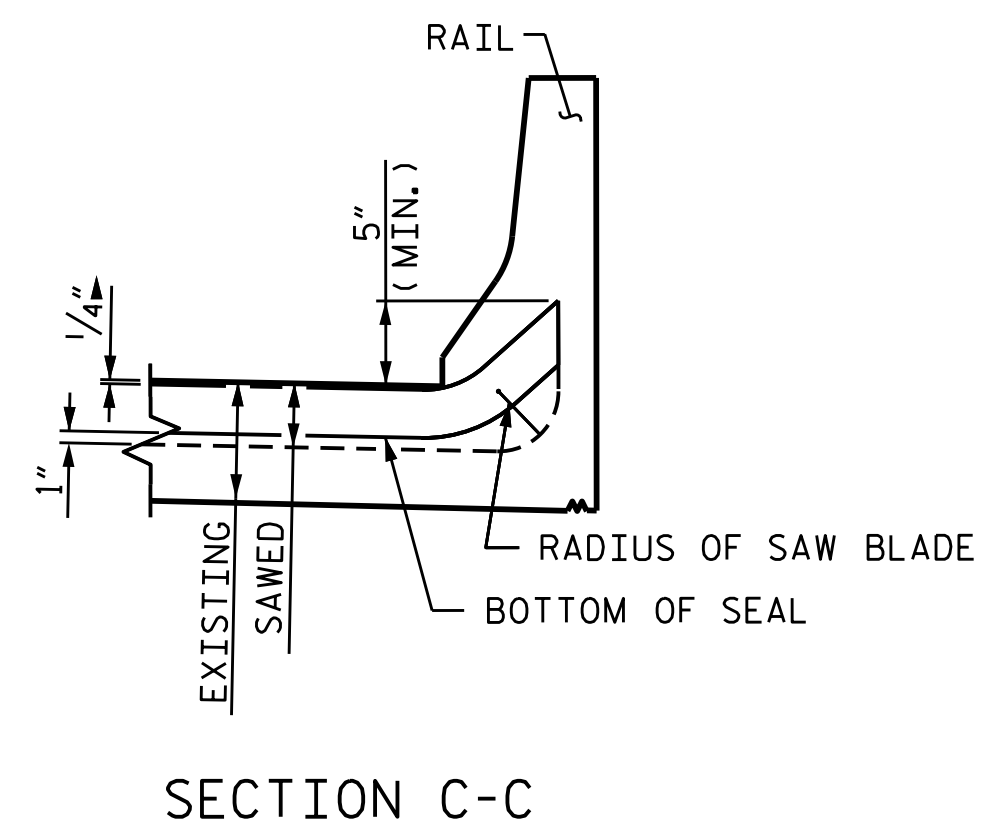
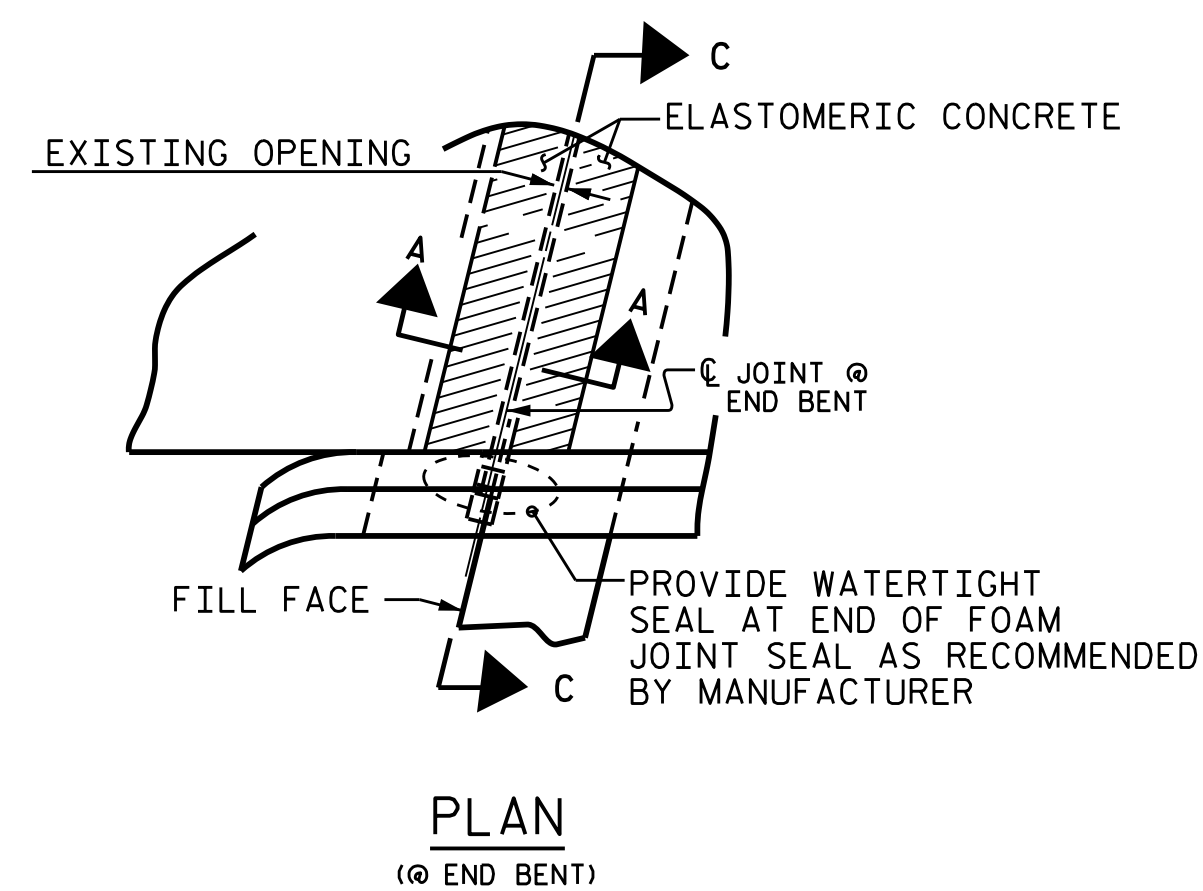


**NOTES**

FOR FOAM JOINT SEALS, SEE SPECIAL PROVISIONS.  
 THE INSTALLED FOAM JOINT SEALS SHALL BE WATERTIGHT.  
 NOMINAL UNCOMPRESSED SEAL WIDTH OF FOAM JOINT SEAL AT END BENT 1 SHALL BE 2<sup>3</sup>/<sub>16</sub>" AND AT END BENT 2 SHALL BE 2<sup>1</sup>/<sub>16</sub>".



**SECTION A-A**



FOAM JOINT SEALS FOR PRESERVATION		
END BENT 1	85.0	(LIN. FT.)
END BENT 2	57.7	(LIN. FT.)
TOTAL	142.7	(LIN. FT.)

**JOINT SEAL DETAILS**

**NOTES:**

FOR FOAM JOINT SEALS FOR PRESERVATION, SEE SPECIAL PROVISIONS.  
 THE INSTALLED FOAM JOINT SEAL SHALL BE WATER TIGHT.  
 NOMINAL UNCOMPRESSED SEAL WIDTH OF FOAM JOINT SEAL SHALL BE 2<sup>3</sup>/<sub>16</sub>" AT THE END BENTS AND 2<sup>1</sup>/<sub>16</sub>" AT THE BENTS.  
 FOR ELASTOMERIC CONCRETE FOR PRESERVATION, SEE SPECIAL PROVISIONS.



PROJECT NO. I-5905  
MECKLENGURG COUNTY  
 BRIDGE NO. 590291

STATE OF NORTH CAROLINA  
 DEPARTMENT OF TRANSPORTATION  
 RALEIGH

**JOINT DETAIL**

DRAWN BY : GHOLAMREZA KOUCHEKI DATE : 1/2020  
 CHECKED BY : H.A. LOCKLEAR DATE : 2/2020

DOCUMENT NOT CONSIDERED  
 FINAL UNLESS ALL  
 SIGNATURES COMPLETED

REVISIONS						SHEET NO.
NO.	BY:	DATE:	NO.	BY:	DATE:	S-6
1			3			TOTAL SHEETS
2			4			6