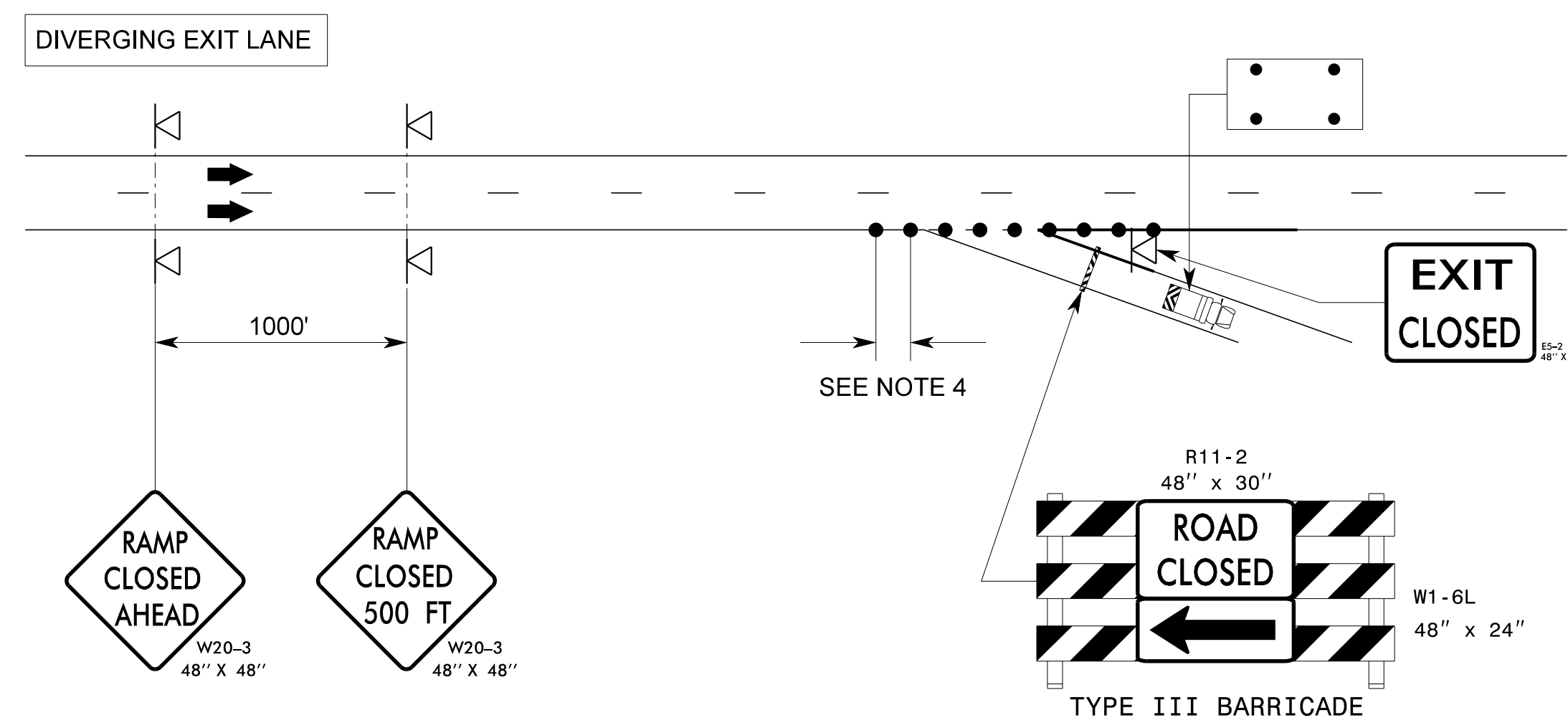
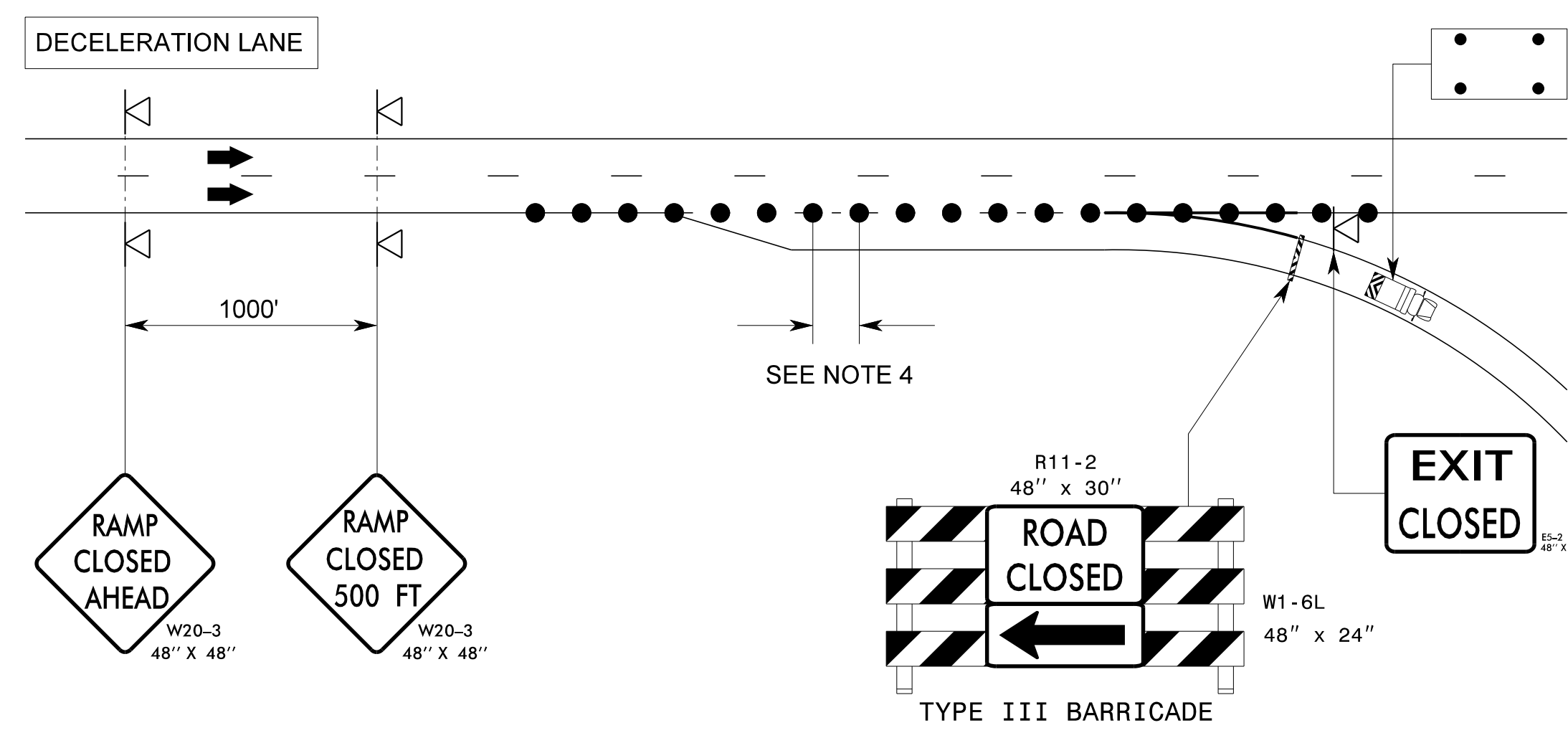


LEGEND

	CHANGEABLE MESSAGE SIGN (CMS)
	PORTABLE SIGN
	FLASHING ARROW BOARD (FAB)
	TRUCK MOUNTED ATTENUATOR (TMA)
	DRUM
	FLASHING ARROW BOARD (96"X48"), CAUTION MODE
	DIRECTION OF TRAFFIC FLOW

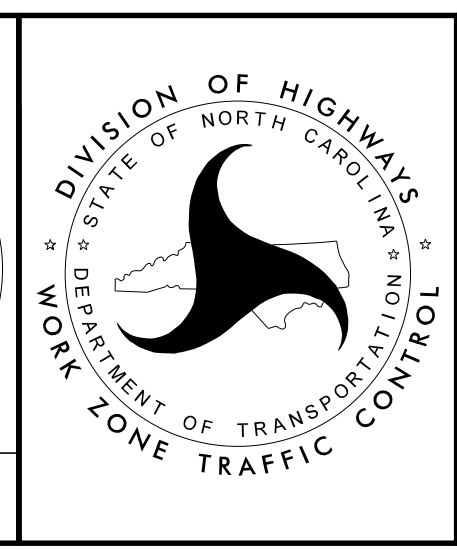


GENERAL NOTES

- 1- USE STATIONARY SIGNS FOR LONG TERM RAMP CLOSURES.
- 2- REFER TO RSD. 1101.11 SHEET 1 OF 4 FOR "L" DISTANCE. IF THE MERGE TAPER "L" DISTANCE CANNOT BE ACHIEVED DUE TO FIELD CONDITIONS, ENGINEER SHALL DETERMINE ACCEPTABLE DISTANCE FOR THE LENGTH OF THE TAPER.
- 3- IF APPLICABLE, INSTALL LANE CLOSURES WITH THE FLOW OF TRAFFIC, BEGINNING ON THE UPSTREAM SIDE OF TRAFFIC. REMOVE LANE CLOSURES AGAINST THE FLOW OF TRAFFIC BEGINNING WITH DEVICES ON THE DOWNSTREAM SIDE OF TRAFFIC.
- 4- PLACE DRUMS IN TAPERS AT THE MAXIMUM SPACING EQUAL IN FEET TO THE POSTED SPEED LIMIT.
- 5- POSITION THE TMA TO MAINTAIN A ROLL-AHEAD DISTANCE AS RECOMMENDED BY THE MANUFACTURER.
- 6- PLACE FLASHING ARROW BOARDS (FAB) ON THE SHOULDER. PLACE THE FAB WITHIN THE TAPER IF SHOULDERS DO NOT EXIST. MEET THE REQUIREMENTS FOR STOPPING SIGHT DISTANCE AT THE FAB LOCATION. IF NEEDED, EXTEND LANE CLOSURES AT THE BUFFER SPACE, SUCH THAT STOPPING SIGHT DISTANCE HAS BEEN MET. (SEE RSD. 1101.11, SHEET 2)
- 7- USE LAW ENFORCEMENT AS NECESSARY FOR THE INITIAL CLOSURE OF RAMPS, OR AS DIRECTED BY THE ENGINEER.
- 8- COVER EXISTING EXIT SIGN LOCATED WITHIN THE GORE.
- 9- LONG TERM RAMP CLOSURES IN EXCESS OF 14 DAYS WILL REQUIRE OVERHEAD GUIDE SIGNS TO BE COVERED WITH EXIT CLOSED SIGN.

APPROVED: *Kenneth C. Thornwell Jr., P.E.*
1E901EP27373405
 DATE: 3/8/2021

**DOCUMENT NOT CONSIDERED FINAL
UNLESS ALL SIGNATURES COMPLETED**



**TEMPORARY
RAMP CLOSURE**

I:\9\2020\1\dot\dfs\root\01NPrj\Store\Div\Proj\Division\5905\TrafficControl\TCP\DCN\I-5905_TC_TMP-2A_RSD-closure.dgn
 User: tkelly