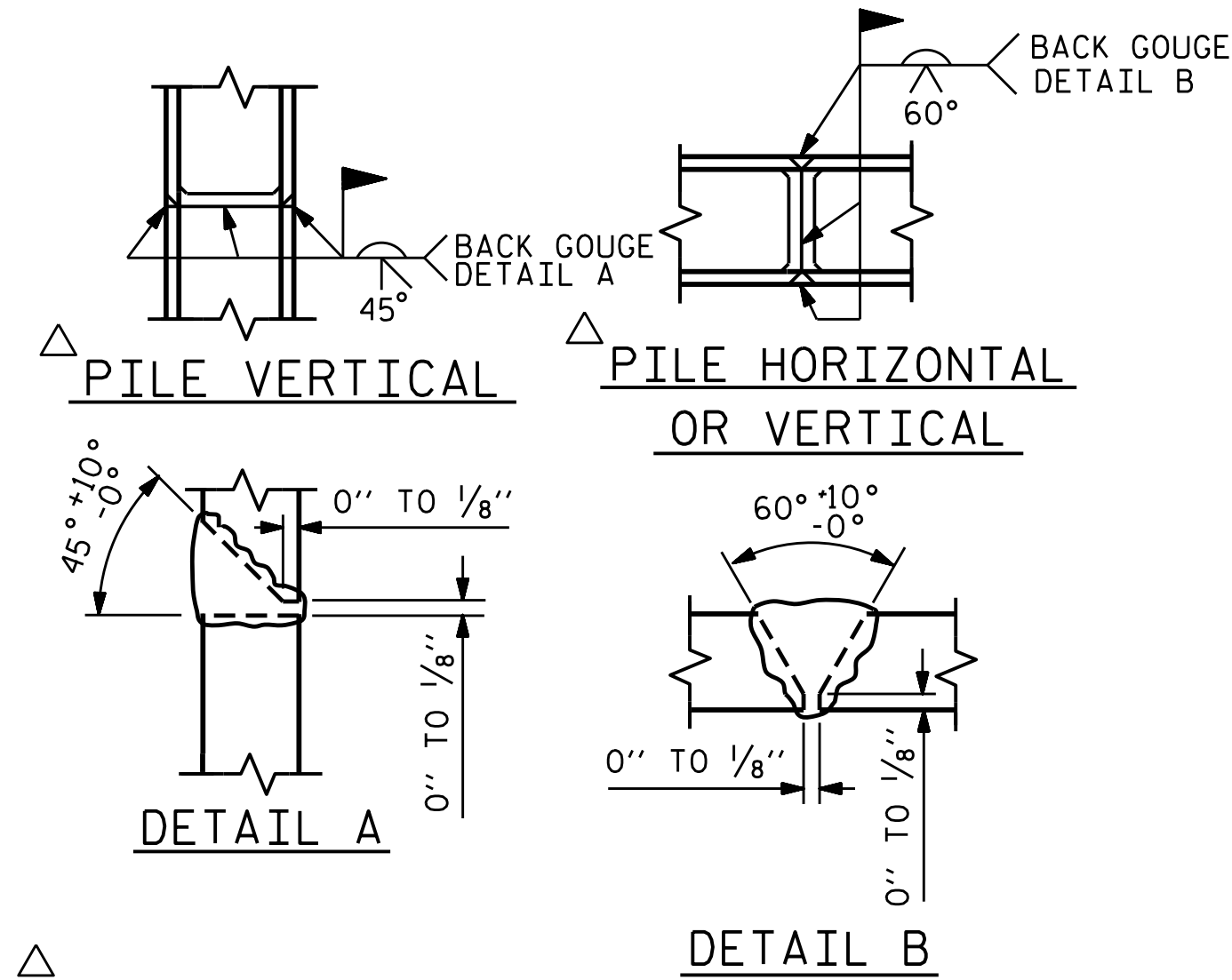


BAGGED STONE AND PIPE SHALL BE PLACED IMMEDIATELY AFTER COMPLETION OF END BENT EXCAVATION. PIPE MAY BE EITHER CONCRETE, CORRUGATED STEEL, CORRUGATED ALUMINUM ALLOY, OR CORRUGATED PLASTIC. PERFORATED PIPE WILL NOT BE ALLOWED.

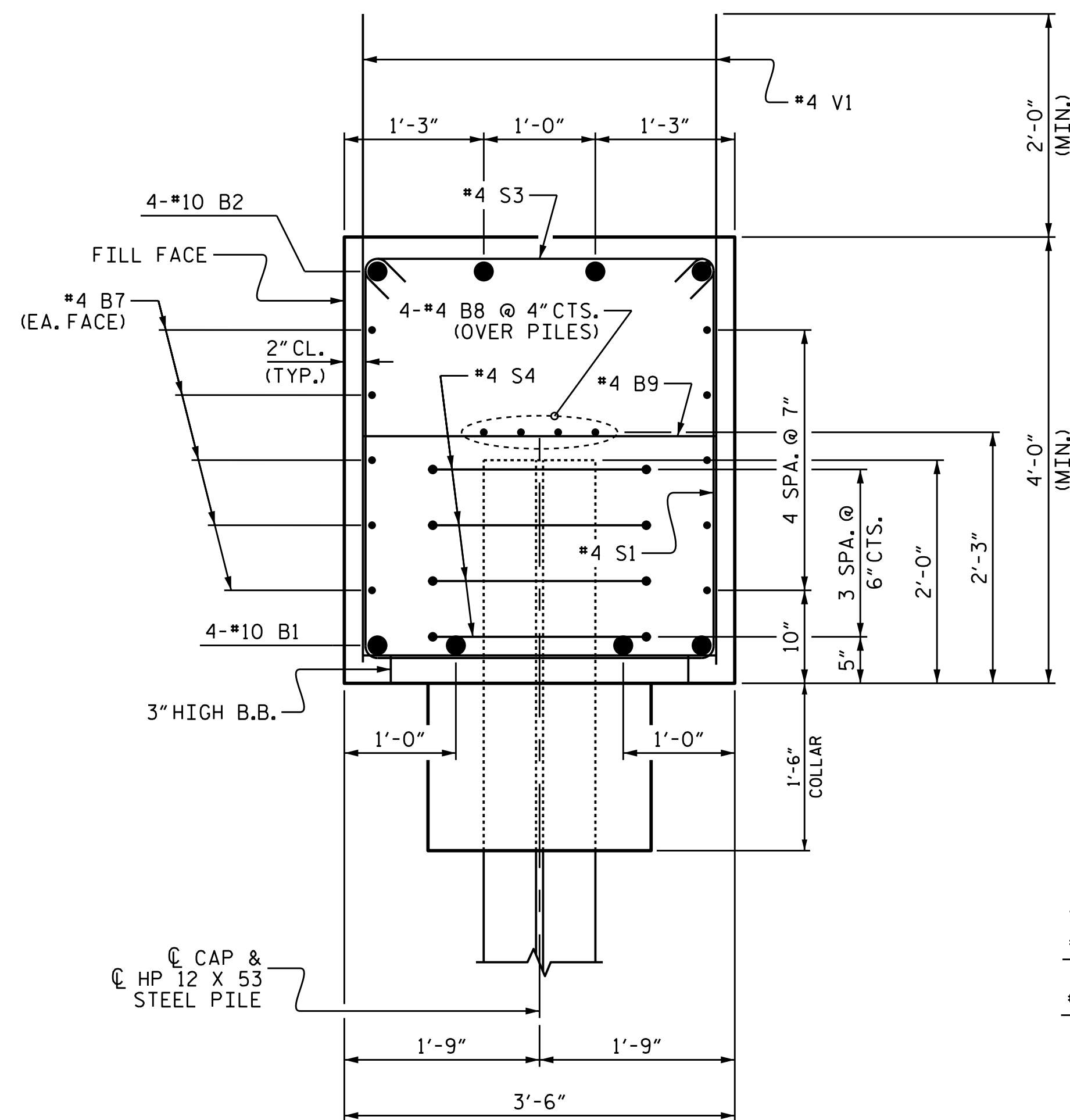
BAGGED STONE SHALL REMAIN IN PLACE UNTIL THE ENGINEER DIRECTS THAT IT BE REMOVED. THE CONTRACTOR SHALL REMOVE AND DISPOSE OF SILT ACCUMULATIONS AT BAGGED STONE WHEN SO DIRECTED BY THE ENGINEER. BAGS SHALL BE REMOVED AND REPLACED WHENEVER THE ENGINEER DETERMINES THAT THEY HAVE DETERIORATED AND LOST THEIR EFFECTIVENESS.

NO SEPARATE PAYMENT WILL BE MADE FOR THIS WORK AND THE ENTIRE COST OF THIS WORK SHALL BE INCLUDED IN THE UNIT CONTRACT PRICE BID FOR THE SEVERAL PAY ITEMS.

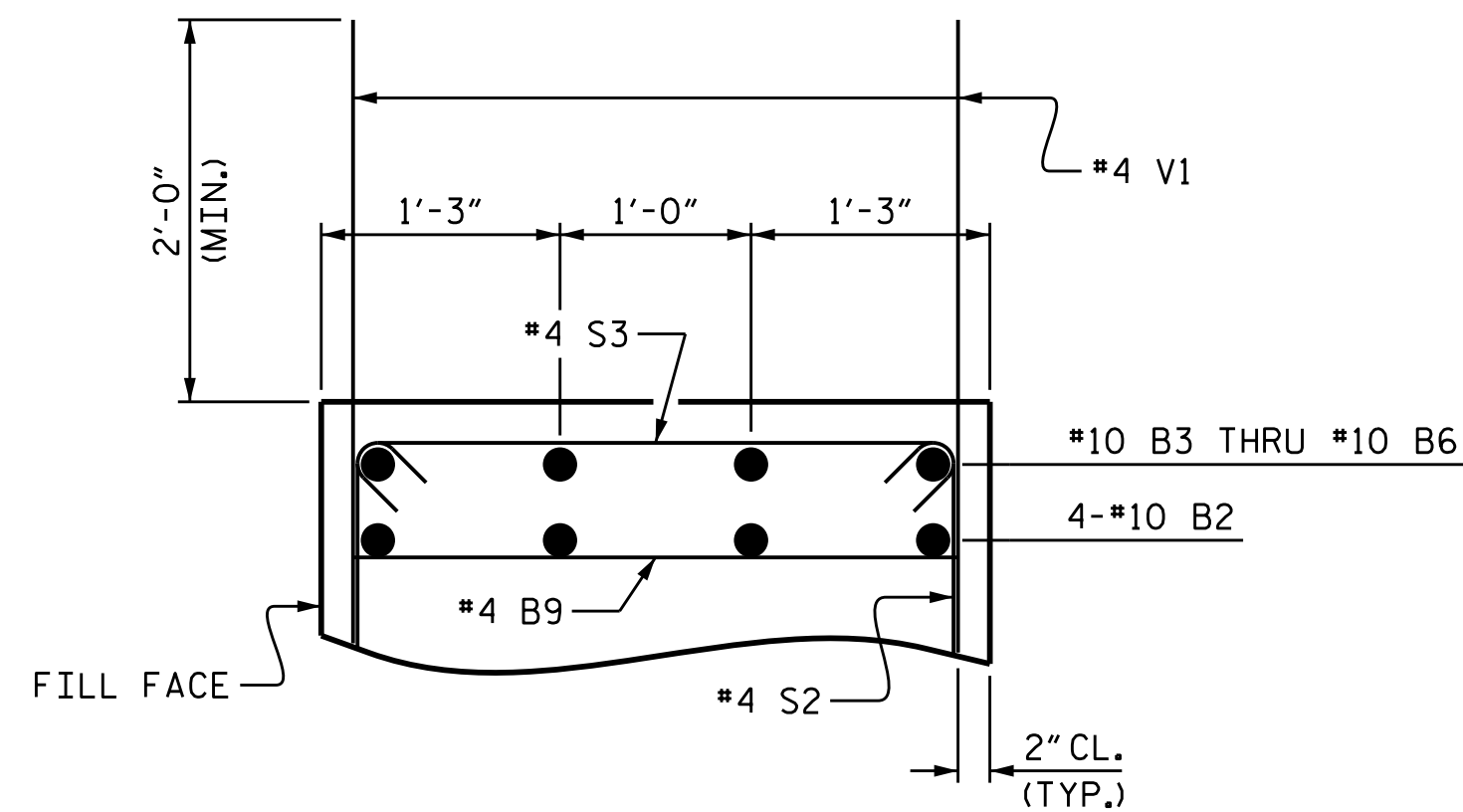
TEMPORARY DRAINAGE AT END BENT



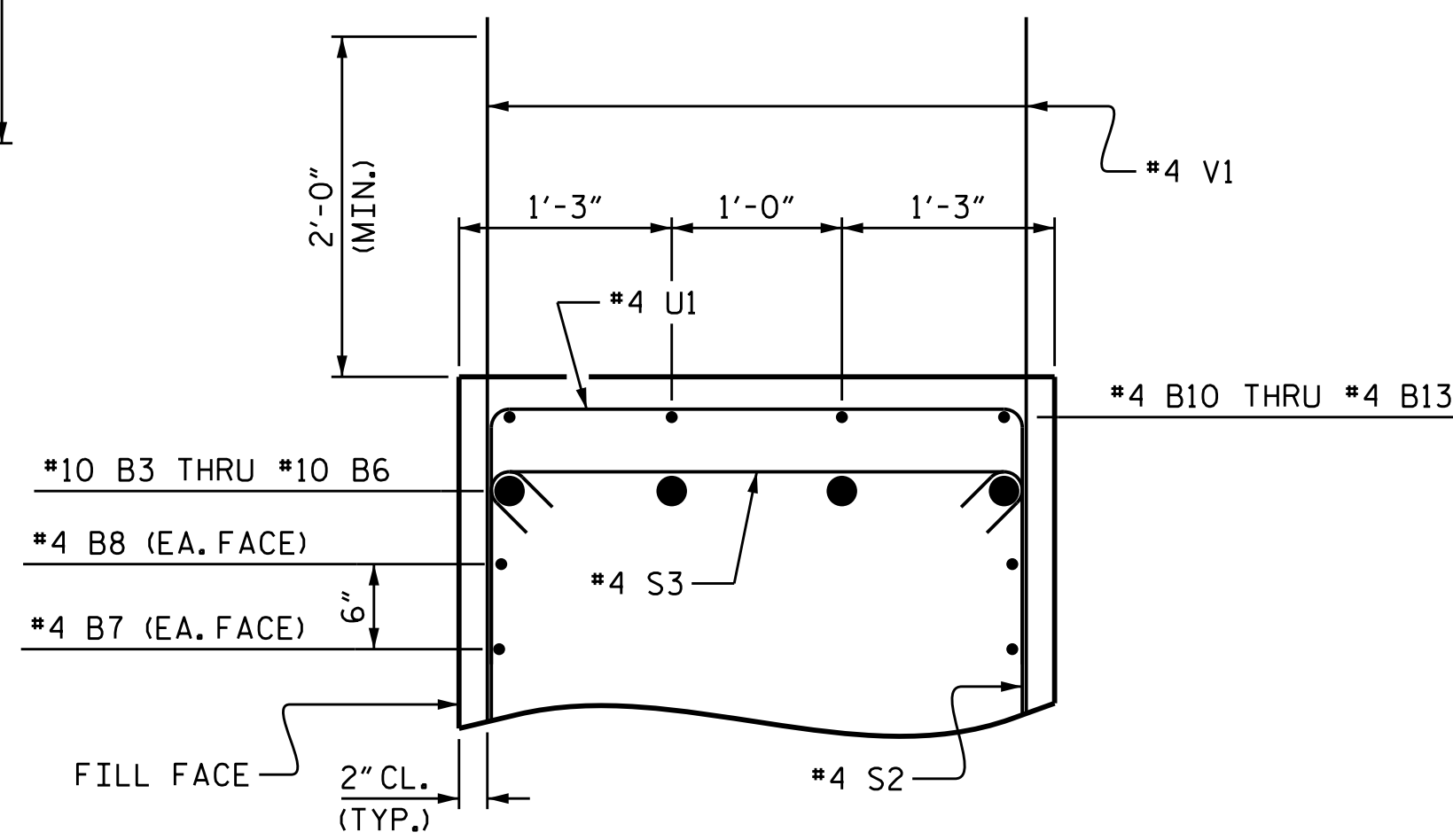
POSITION OF PILE DURING WELDING.
PILE SPLICE DETAILS



SECTION A-A

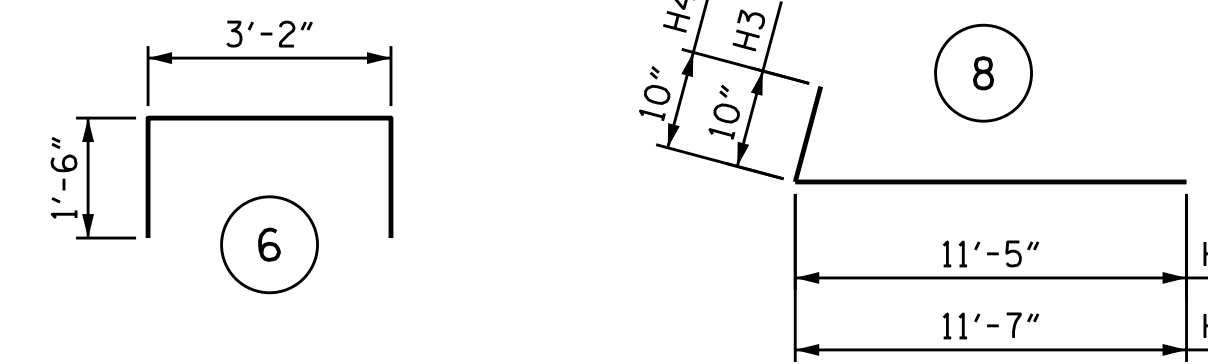
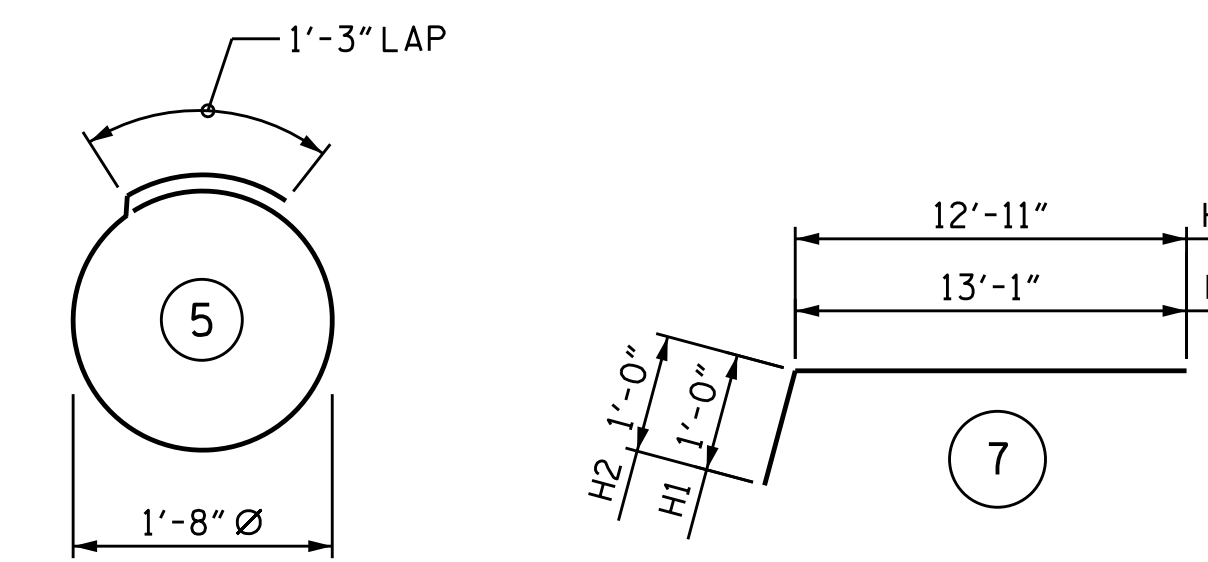
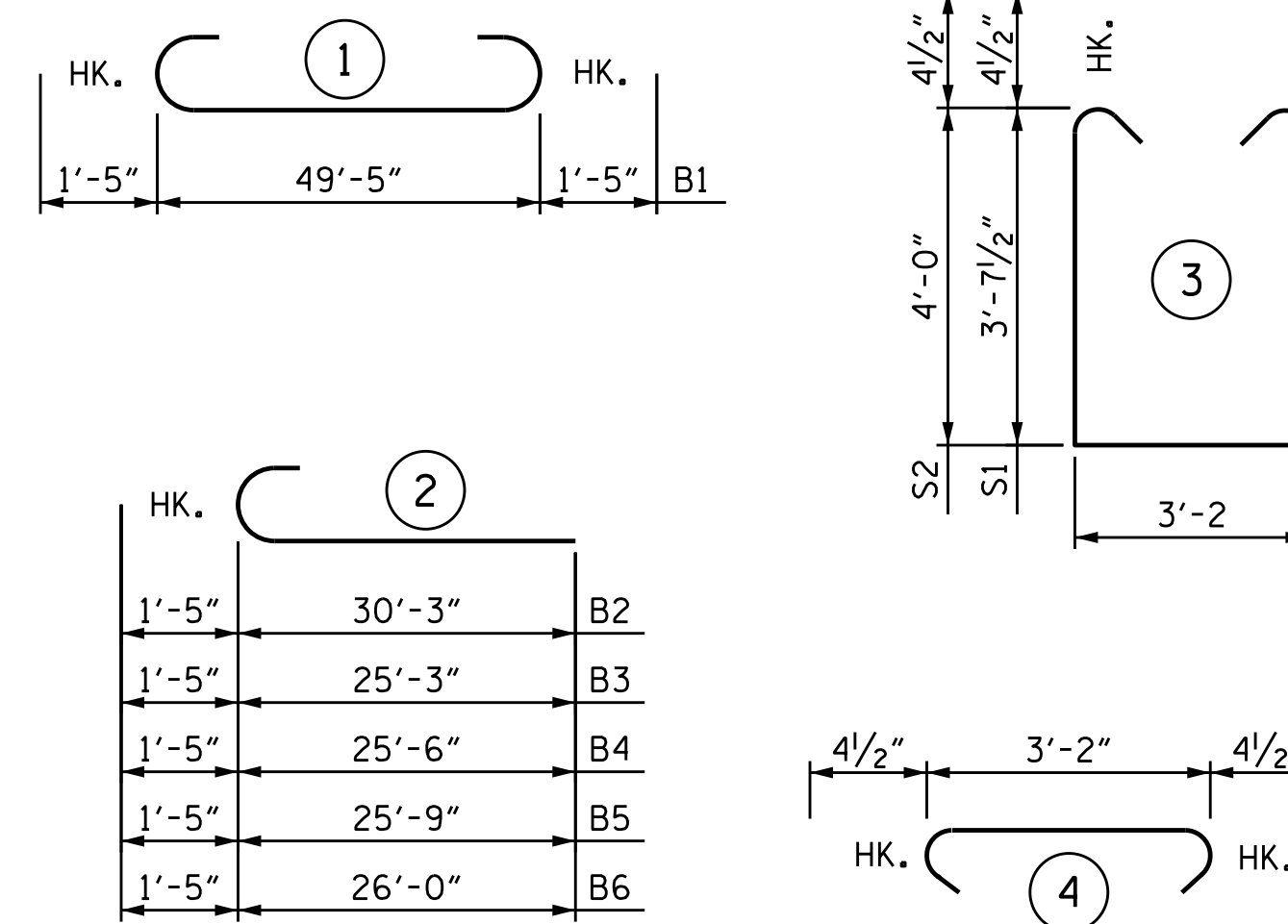


PART SECTION B-B



PART SECTION C-C

BAR TYPES



ALL BAR DIMENSIONS ARE OUT TO OUT.

BILL OF MATERIAL

BAR	NO.	SIZE	TYPE	LENGTH	WEIGHT
B1	4	#10	1	52'-3"	899
B2	4	#10	2	31'-8"	545
B3	1	#10	2	26'-8"	115
B4	1	#10	2	26'-11"	116
B5	1	#10	2	27'-2"	117
B6	1	#10	2	27'-5"	118
B7	28	#4	STR	26'-1"	488
B8	2	#4	STR	21'-9"	29
B9	14	#4	STR	3'-2"	30
B10	1	#4	STR	7'-0"	5
B11	1	#4	STR	7'-3"	5
B12	1	#4	STR	7'-6"	5
B13	1	#4	STR	7'-9"	5
H1	20	#6	7	14'-1"	423
H2	20	#6	7	13'-11"	418
H3	18	#5	8	12'-3"	230
H4	18	#5	8	12'-5"	233
K8	2	#4	STR	3'-9"	5
S1	27	#4	3	11'-2"	201
S2	29	#4	3	11'-11"	231
S3	56	#4	4	3'-11"	147
S4	24	#4	5	6'-6"	104
U1	5	#4	6	6'-2"	21
V1	79	#4	STR	5'-10"	308
V2	38	#4	STR	9'-9"	241
V3	34	#4	STR	8'-8"	197

REINFORCING STEEL 5,251 LBS.

CLASS A CONCRETE
POUR #1 (CAP, COLLARS, & LOWER PART OF WINGS) 33.0 C.Y.
POUR #2 (UPPER PART OF WINGS) 5.7 C.Y.
TOTAL 38.7 C.Y.

HP 12 X 53 STEEL PILES
No. 6 LIN FT. 450

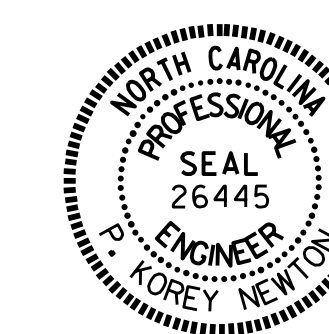
PILE REDRIVES NO. 3

STEEL PILE POINTS NO. 6

PILE DRIVING EQUIPMENT SETUP FOR HP 12 X 53 STEEL PILES NO. 6

PROJECT NO. BR-0017
DUPLIN COUNTY
STATION: 18+27.00 -L-

SHEET 3 OF 3



DocuSigned by:
P. Corey Newton
4FFE39D1431B407
3/30/2021

STATE OF NORTH CAROLINA
DEPARTMENT OF TRANSPORTATION
RALEIGH
SUBSTRUCTURE
INTEGRAL
END BENT 2

REVISIONS

NO.	BY:	DATE:	NO.	BY:	DATE:
1			3		
2			4		

SHEET NO.
S-25
TOTAL SHEETS
28

DOCUMENT NOT CONSIDERED FINAL UNLESS ALL SIGNATURES COMPLETED

DRAWN BY: P. K. NEWTON DATE: 2/25/21
CHECKED BY: P. D. BRYANT DATE: 3/1/21
DESIGN ENGINEER OF RECORD: P. D. BRYANT DATE: 3/1/21