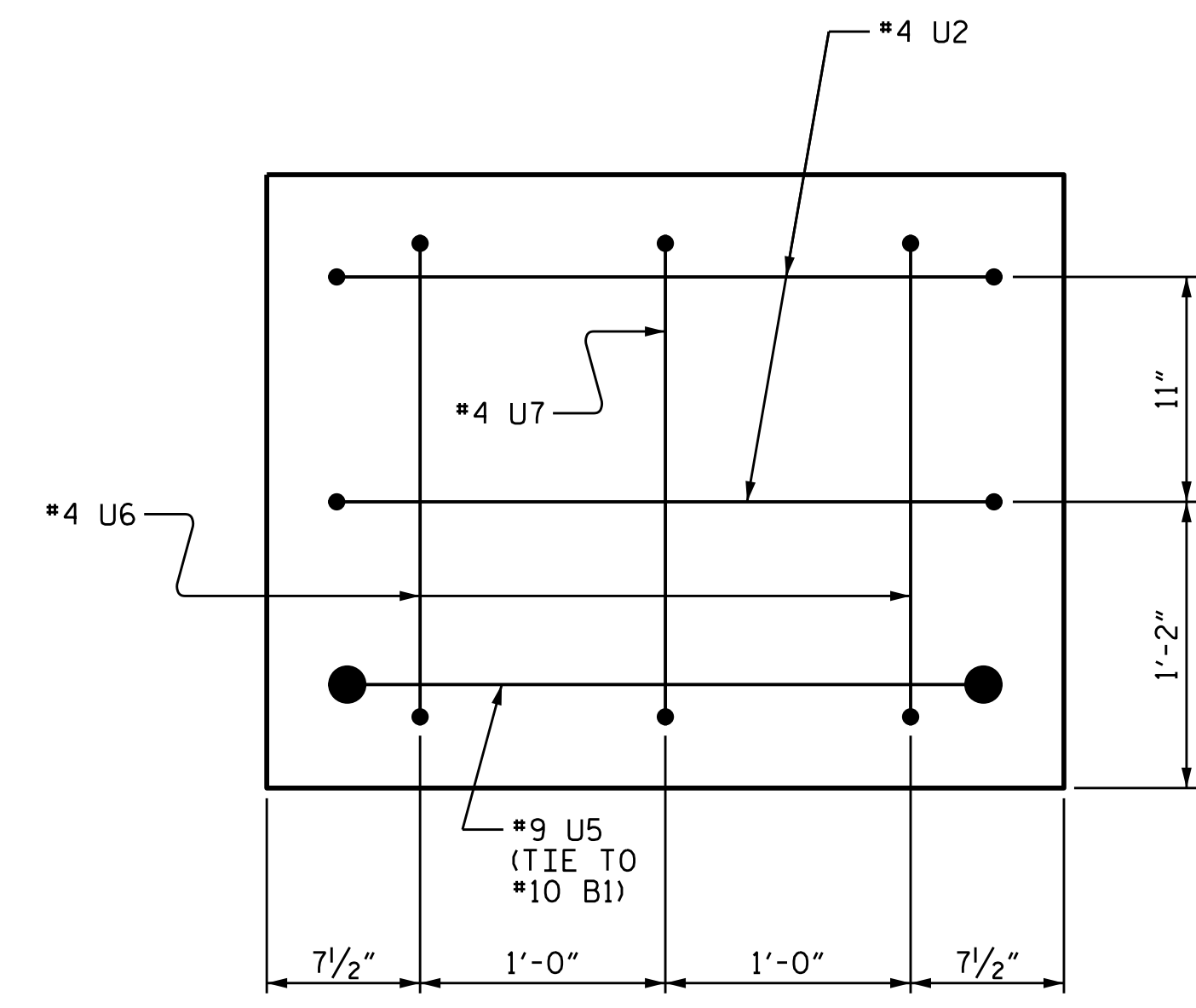
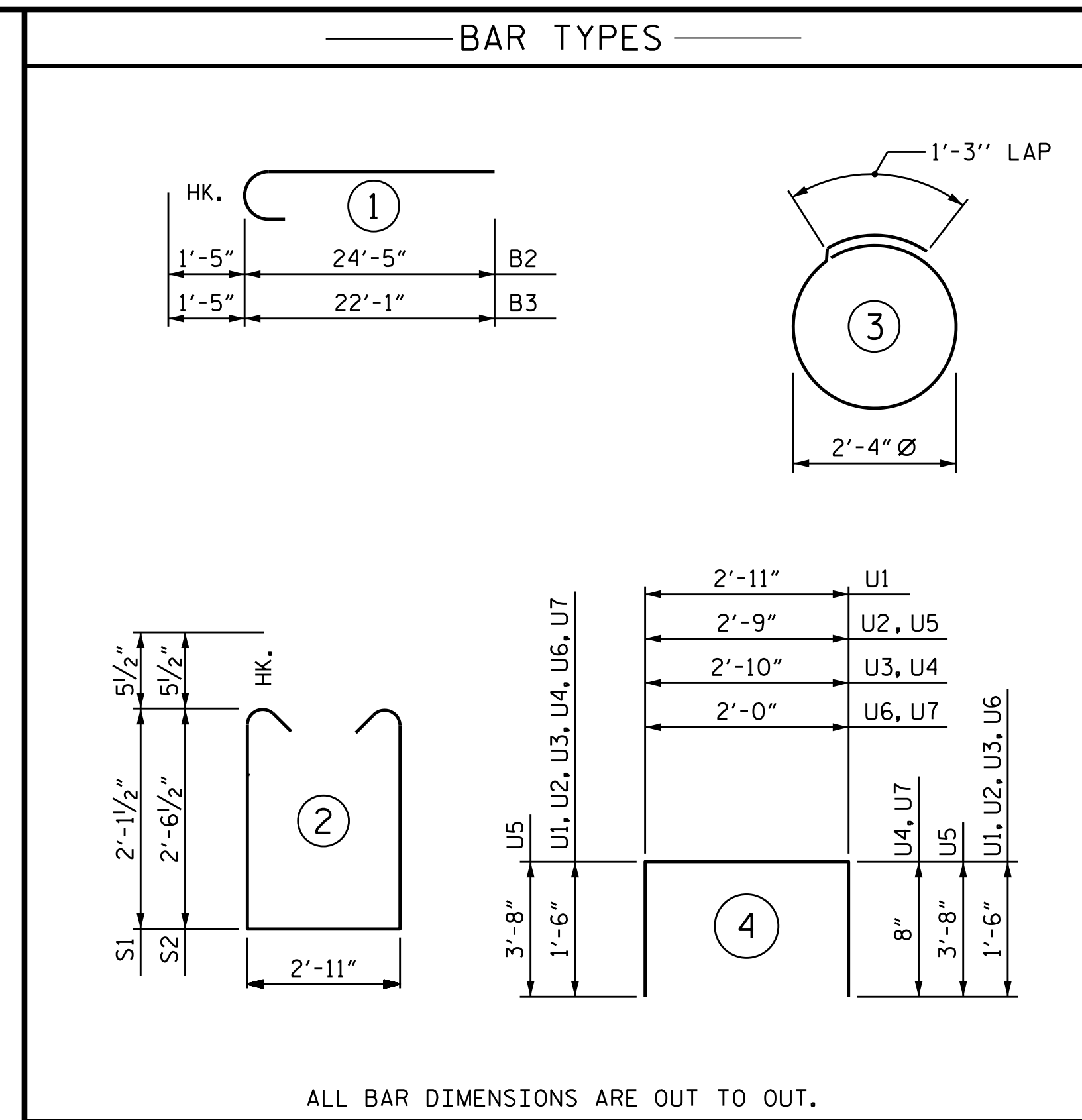


VIEW X-X



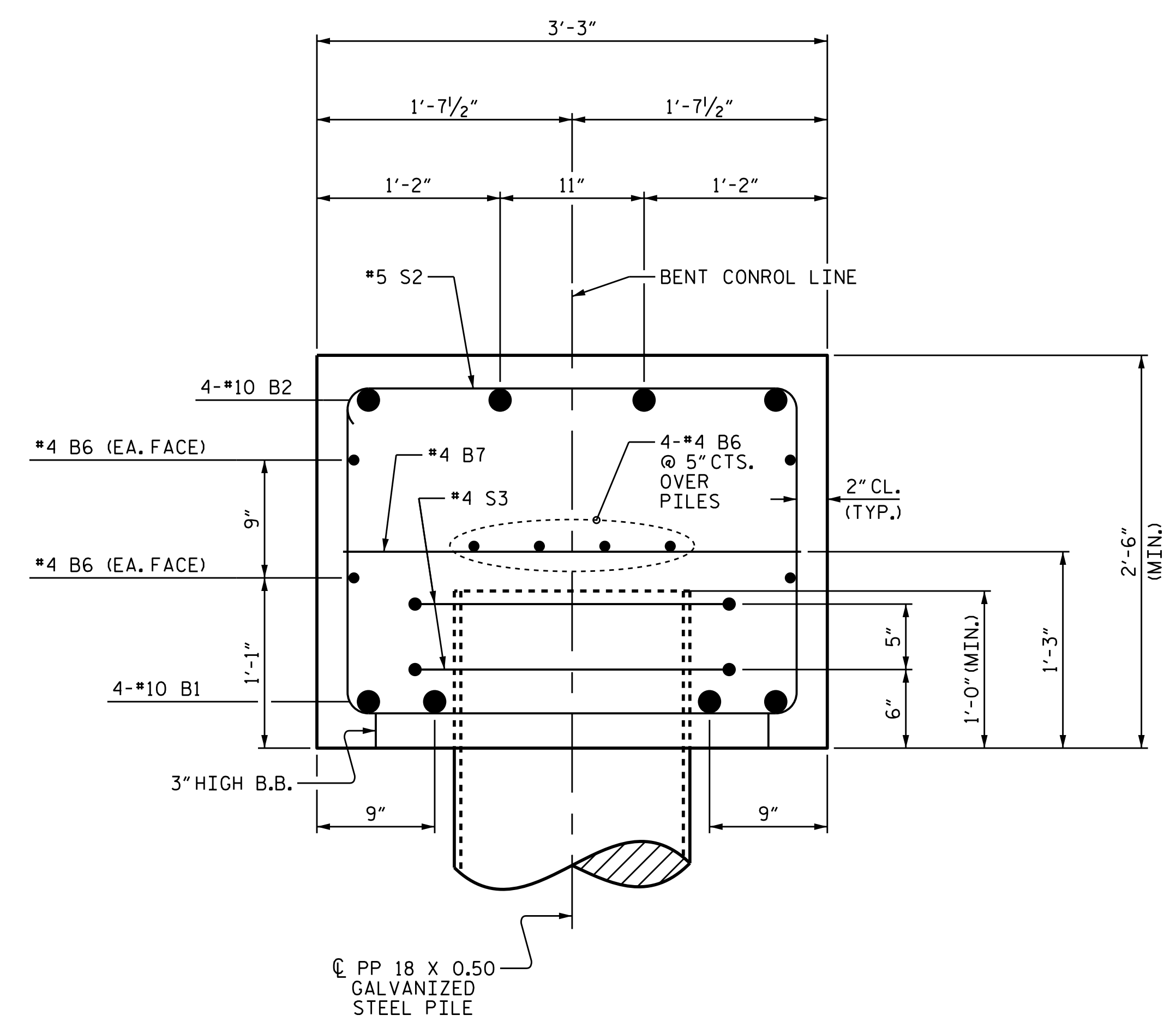
VIEW Y-Y



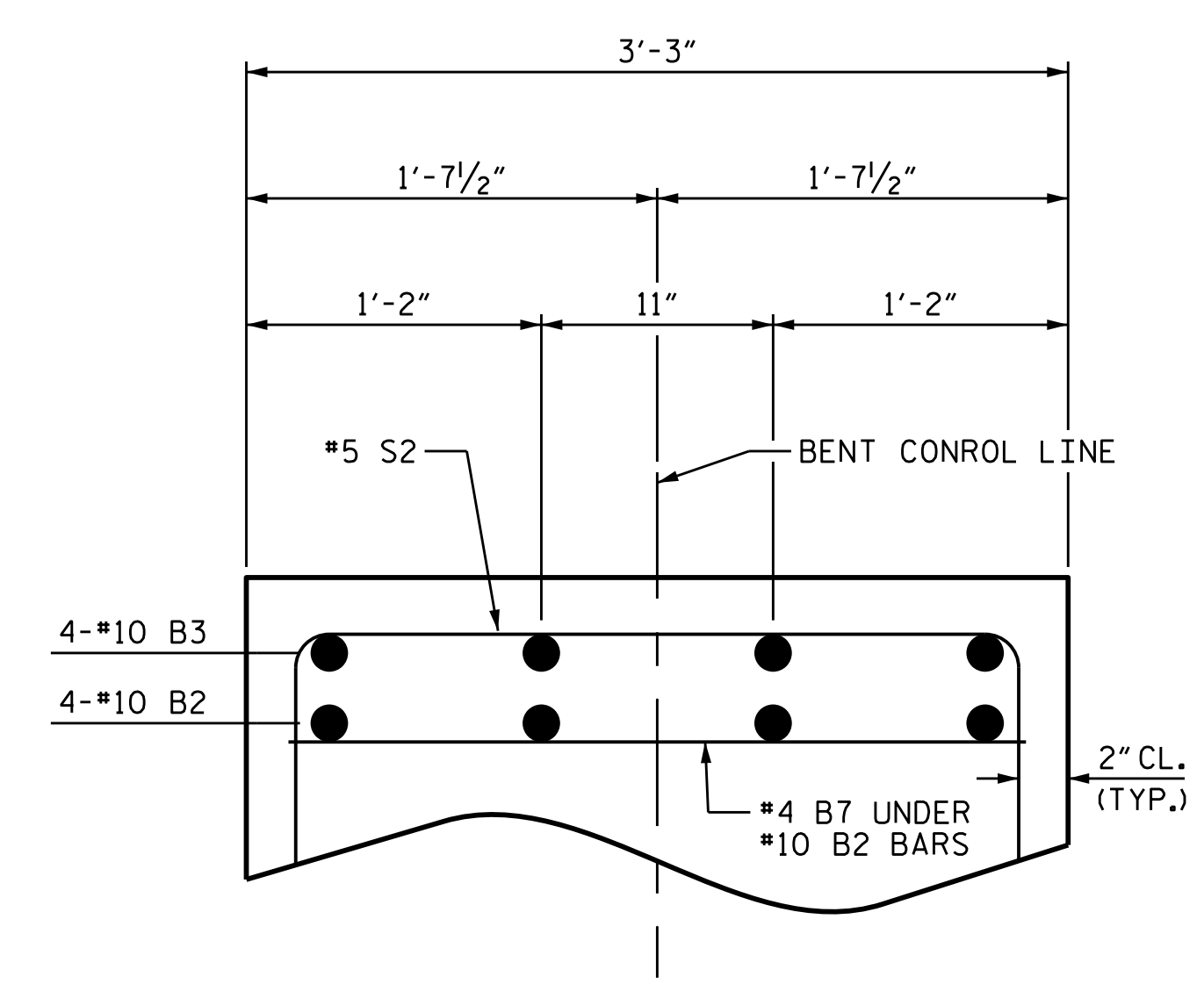
ALL BAR DIMENSIONS ARE OUT TO OUT.

BILL OF MATERIAL					
BAR	NO.	SIZE	TYPE	LENGTH	WEIGHT
B1	4	#10	STR	40'-8"	700
B2	4	#10	1	25'-10"	445
B3	4	#10	1	23'-6"	404
B4	8	#4	STR	9'-2"	49
B5	4	#4	STR	3'-10"	10
B6	16	#4	STR	21'-7"	231
B7	12	#4	STR	2'-11"	23
S1	26	#5	2	8'-1"	219
S2	28	#5	2	8'-11"	260
S3	13	#4	3	8'-7"	80
U1	43	#4	4	5'-11"	170
U2	4	#4	4	5'-9"	15
U3	2	#4	4	5'-10"	8
U4	1	#4	4	5'-0"	3
U5	2	#9	4	10'-1"	69
U6	2	#4	4	5'-0"	7
U7	1	#4	4	4'-2"	3
REINFORCING STEEL					2,696 LBS.
CLASS A CONCRETE BREAKDOWN					
TOTAL CLASS A CONCRETE					▲ 13.8 C.Y.
PP 18 x 0.50 GALVANIZED STEEL PILES					
No. 7					LIN. FT. 525.0
PIPE PILE PLATES					NO. 7
PILE DRIVING EQUIPMENT SETUP FOR PP 18 x 0.50 GALVANIZED STEEL PILES					NO. 7
PILE REDRIVES					NO. 4

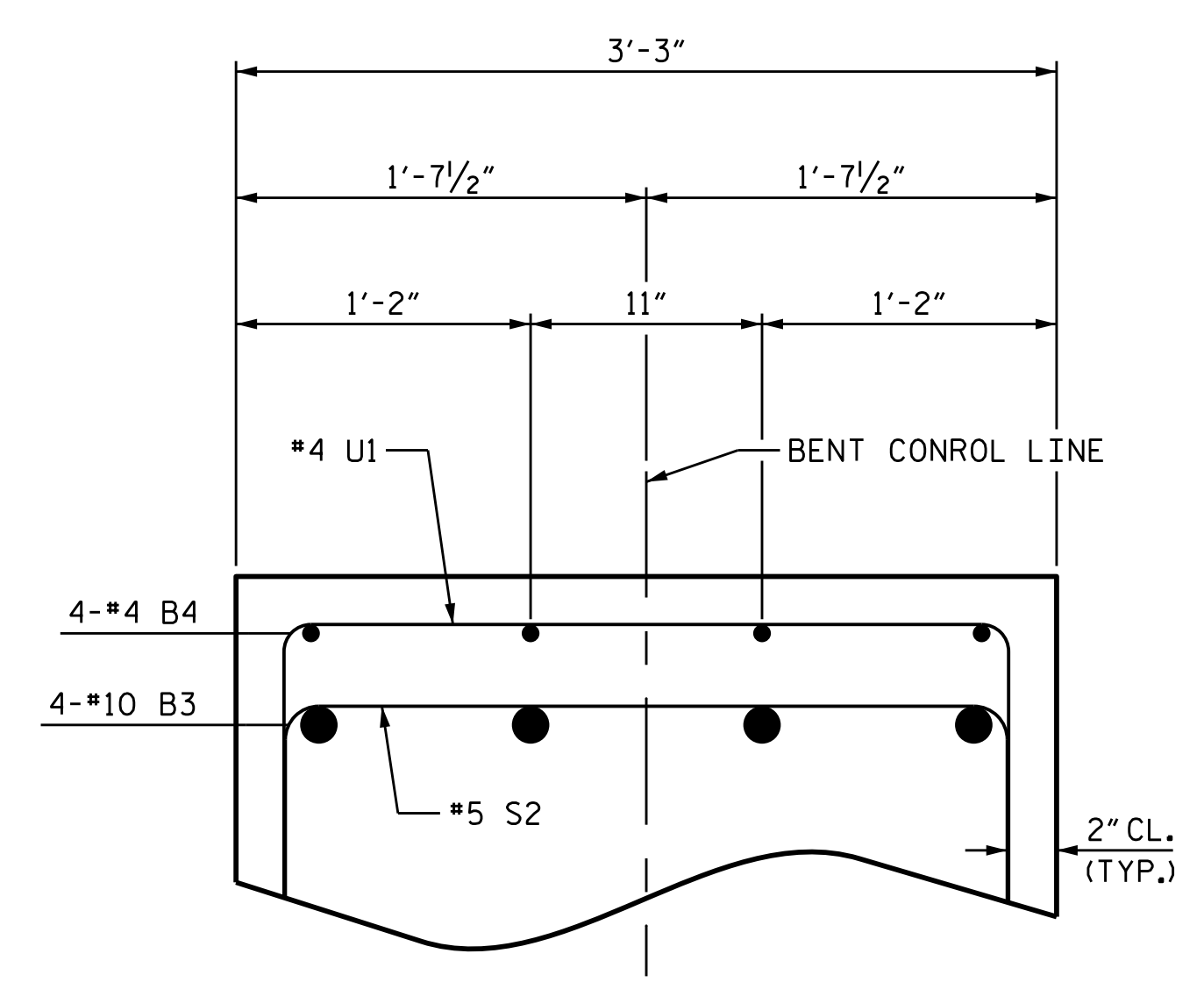
▲ CONCRETE DISPLACED BY THE PP 18 x 0.50 GALVANIZED STEEL PILES HAS BEEN DEDUCTED FROM THE CONCRETE QUANTITY.



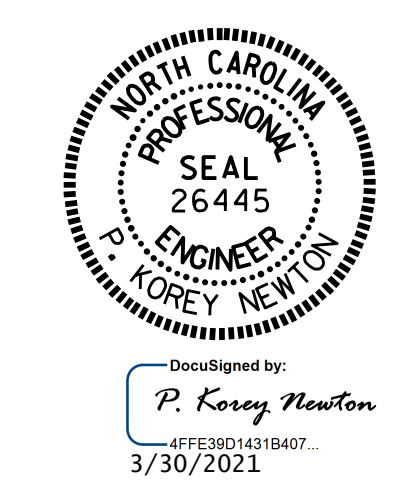
SECTION A-A



PART SECTION B-B



PART SECTION C-C



PROJECT NO. BR-0017
 DUPLIN COUNTY
 STATION: 18+27.00 -L-
 SHEET 2 OF 3

STATE OF NORTH CAROLINA
 DEPARTMENT OF TRANSPORTATION
 RALEIGH
 SUBSTRUCTURE
 BENT 1

DRAWN BY : P. K. NEWTON DATE : 2/15/21
 CHECKED BY : D. R. SHACKELFORD DATE : 2/15/21
 DESIGN ENGINEER OF RECORD: P. D. BRYANT DATE : 3/1/21

DOCUMENT NOT CONSIDERED
 FINAL UNLESS ALL
 SIGNATURES COMPLETED

REVISIONS						SHEET NO.
NO.	BY:	DATE:	NO.	BY:	DATE:	S-21
1			3			TOTAL SHEETS
2			4			28