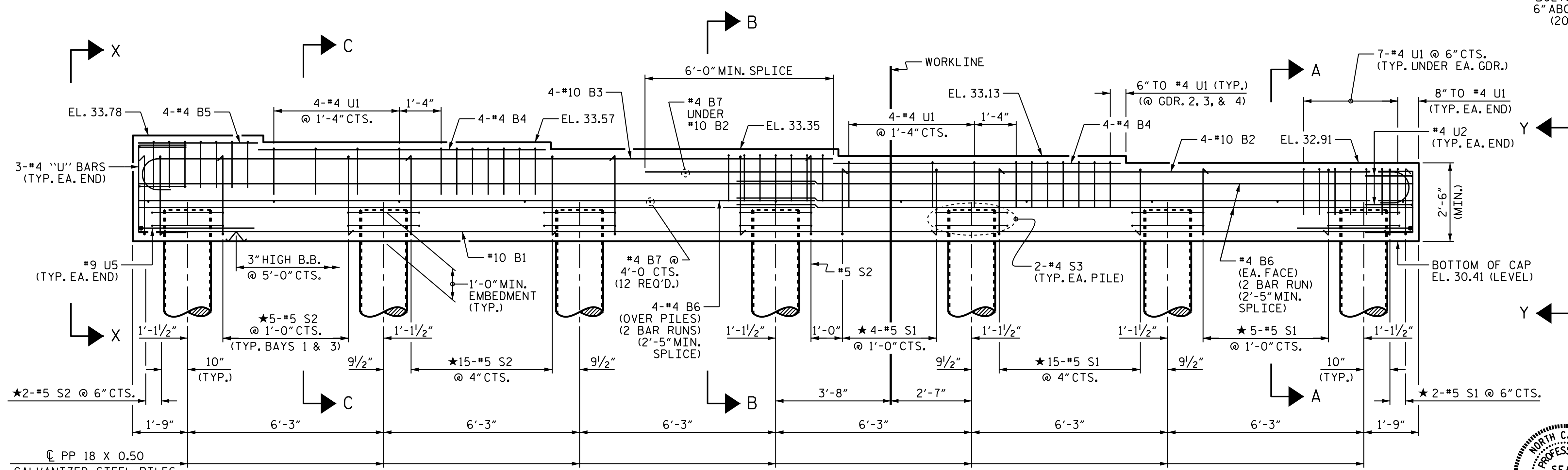
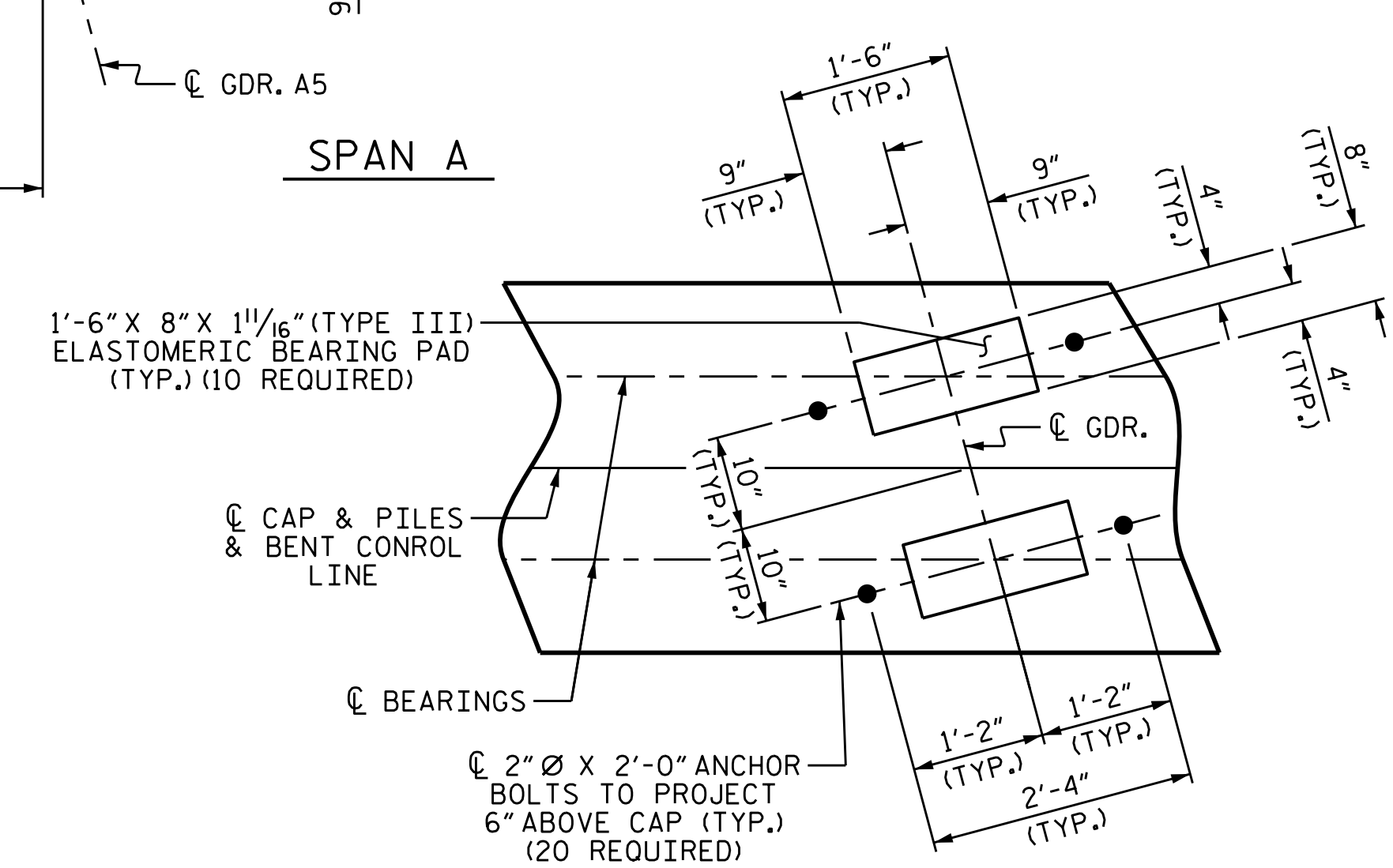
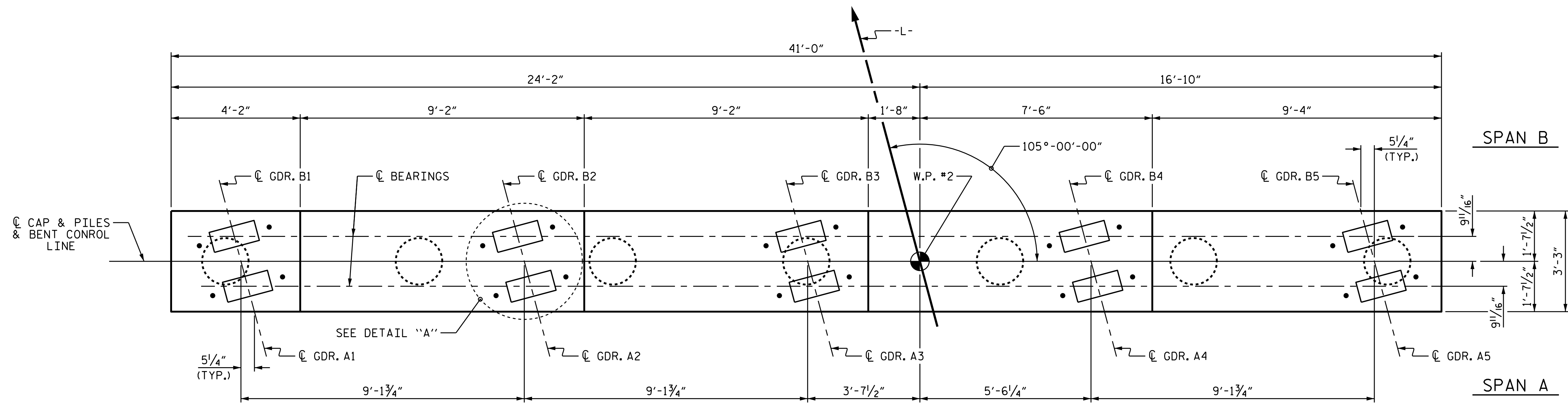


NOTES

- STIRRUPS IN CAP MAY BE SHIFTED AS NECESSARY TO CLEAR ANCHOR BOLTS.
- ★ INVERT ALTERNATE STIRRUPS.
- FOR ADDITIONAL REINFORCING STEEL IN PP 18 x 0.50 GALVANIZED STEEL PILES, SEE SHEET 3 OF 3.
- GALVANIZE THE TOP OF EACH INTERIOR BENT PILE A MINIMUM OF 49 FEET. GALVANIZE IN ACCORDANCE WITH SECTION 1076 OF THE STANDARD SPECIFICATIONS.



PROJECT NO. BR-0017
DUPLIN COUNTY
STATION: 18+27.00 -L-

SHEET 1 OF 3



STATE OF NORTH CAROLINA
DEPARTMENT OF TRANSPORTATION
RALEIGH
SUBSTRUCTURE
BENT 1

DRAWN BY : P. K. NEWTON DATE : 2/15/21
CHECKED BY : D. R. SHACKELFORD DATE : 2/15/21
DESIGN ENGINEER OF RECORD: P. D. BRYANT DATE : 3/1/21

DOCUMENT NOT CONSIDERED
FINAL UNLESS ALL
SIGNATURES COMPLETED

| REVISIONS | | | | | | SHEET NO. |
|-----------|-----|-------|-----|-----|-------|--------------|
| NO. | BY: | DATE: | NO. | BY: | DATE: | S-20 |
| 1 | | | 3 | | | TOTAL SHEETS |
| 2 | | | 4 | | | 28 |