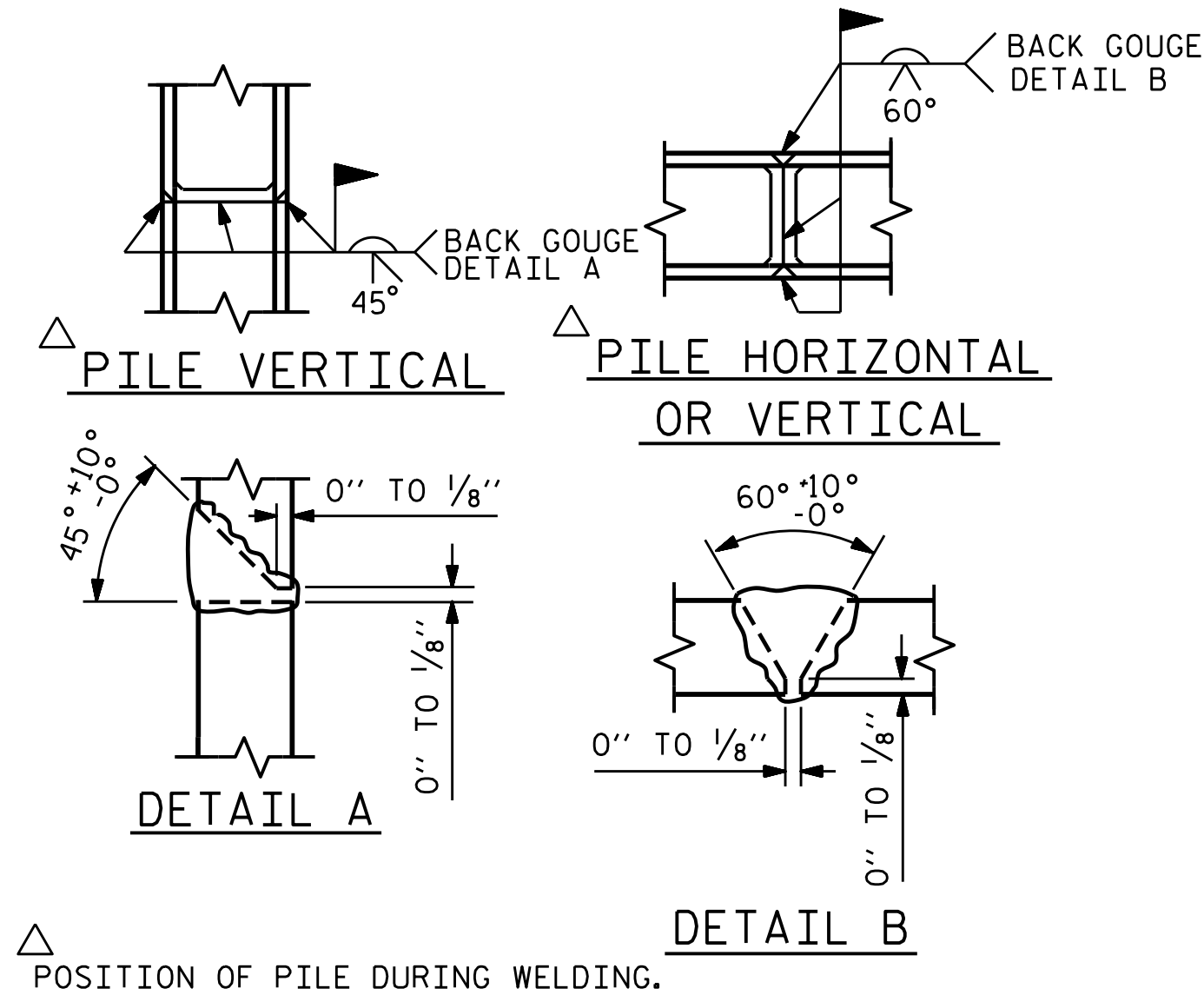


BAGGED STONE AND PIPE SHALL BE PLACED IMMEDIATELY AFTER COMPLETION OF END BENT EXCAVATION. PIPE MAY BE EITHER CONCRETE, CORRUGATED STEEL, CORRUGATED ALUMINUM ALLOY, OR CORRUGATED PLASTIC. PERFORATED PIPE WILL NOT BE ALLOWED.

BAGGED STONE SHALL REMAIN IN PLACE UNTIL THE ENGINEER DIRECTS THAT IT BE REMOVED. THE CONTRACTOR SHALL REMOVE AND DISPOSE OF SILT ACCUMULATIONS AT BAGGED STONE WHEN SO DIRECTED BY THE ENGINEER. BAGS SHALL BE REMOVED AND REPLACED WHENEVER THE ENGINEER DETERMINES THAT THEY HAVE DETERIORATED AND LOST THEIR EFFECTIVENESS.

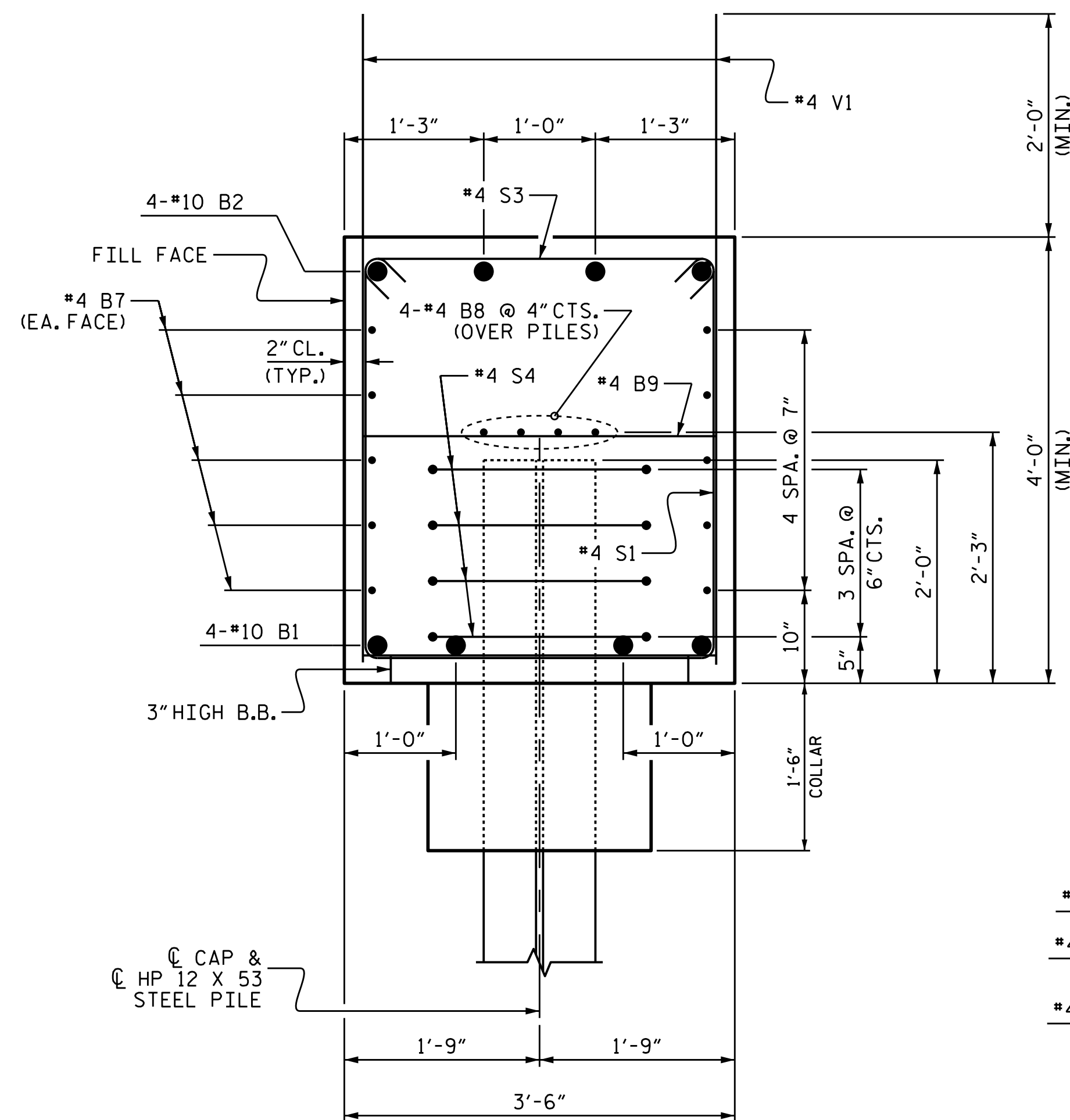
NO SEPARATE PAYMENT WILL BE MADE FOR THIS WORK AND THE ENTIRE COST OF THIS WORK SHALL BE INCLUDED IN THE UNIT CONTRACT PRICE BID FOR THE SEVERAL PAY ITEMS.

TEMPORARY DRAINAGE AT END BENT

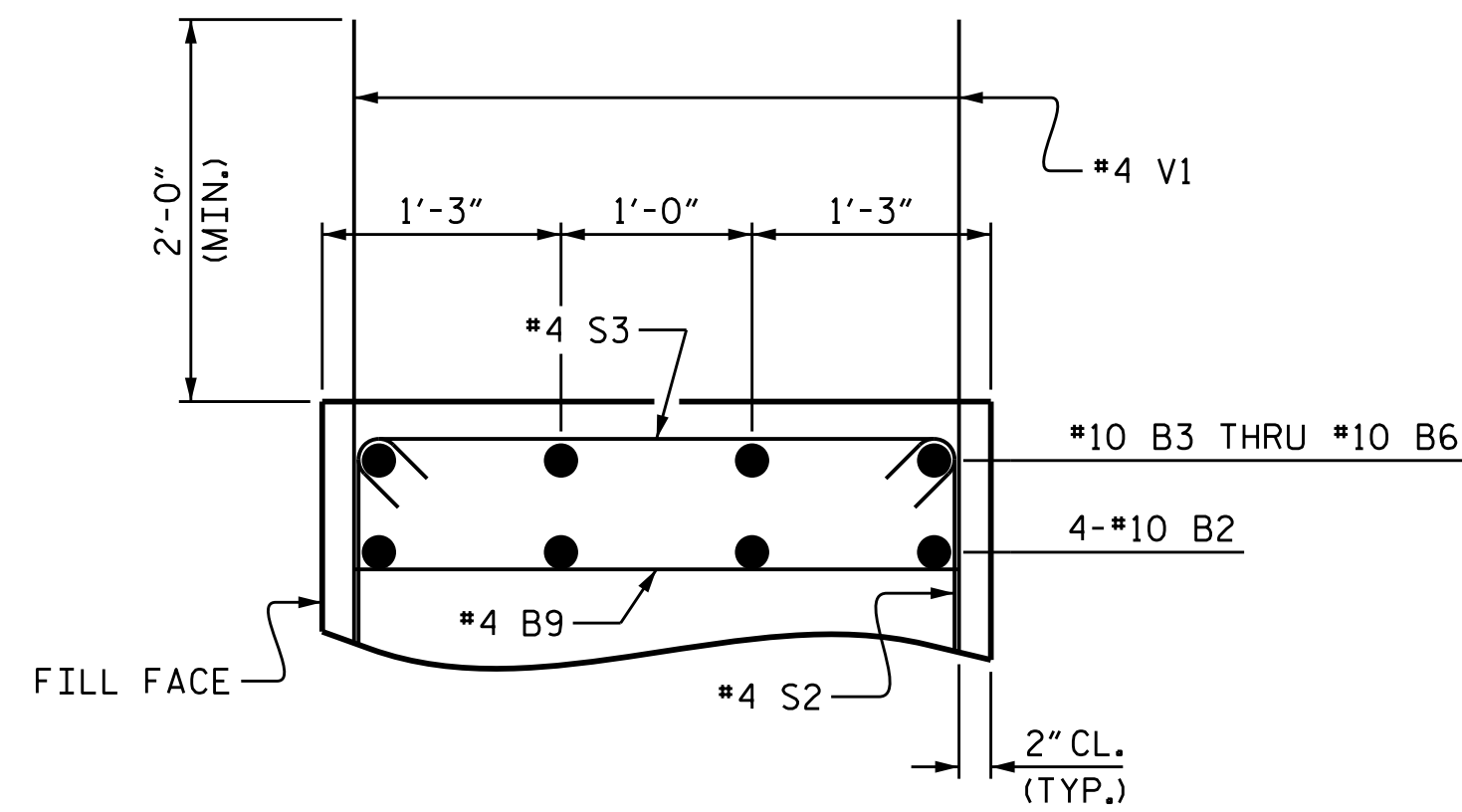


PILE SPLICE DETAILS

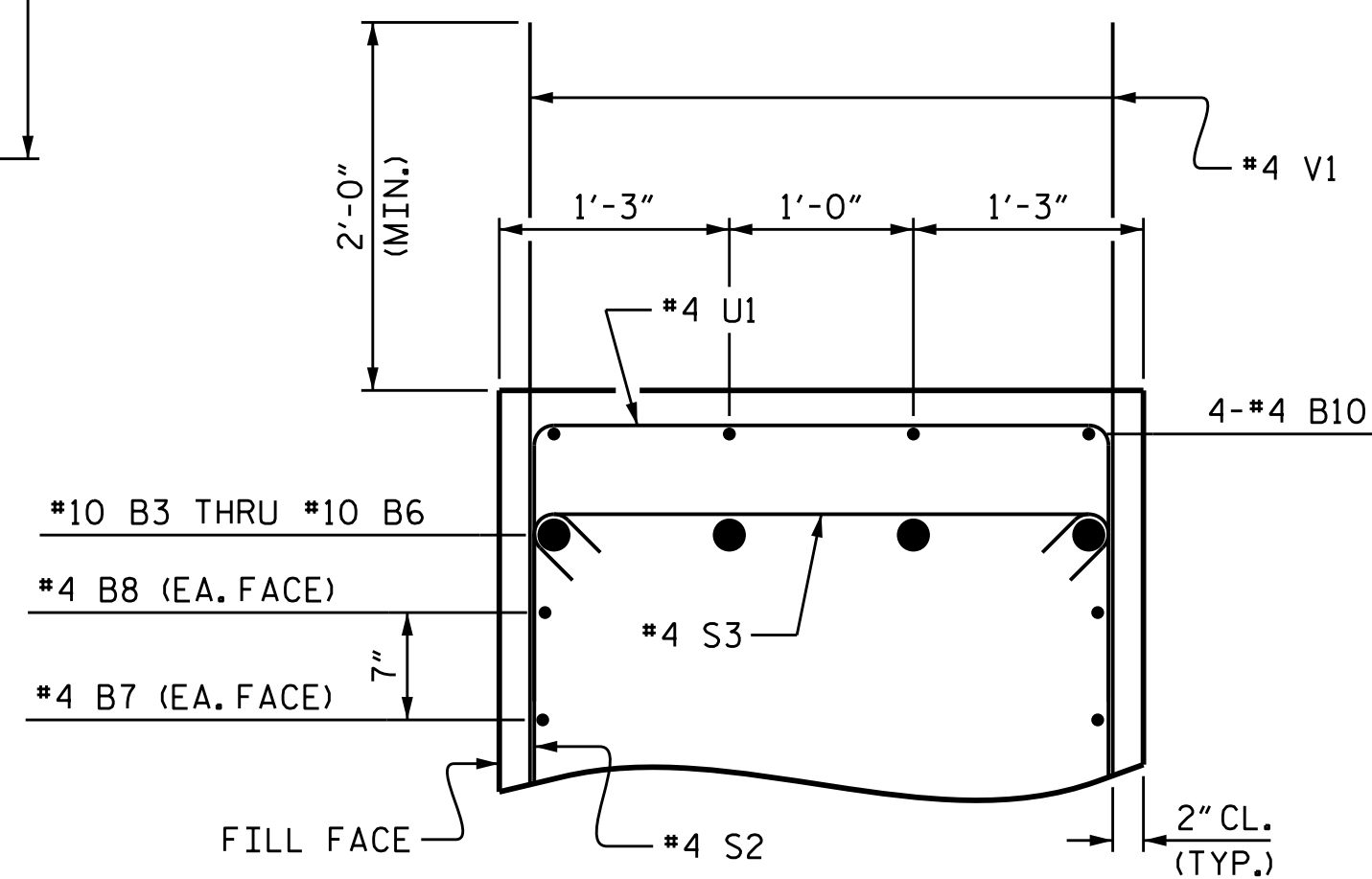
POSITION OF PILE DURING WELDING.



SECTION A-A

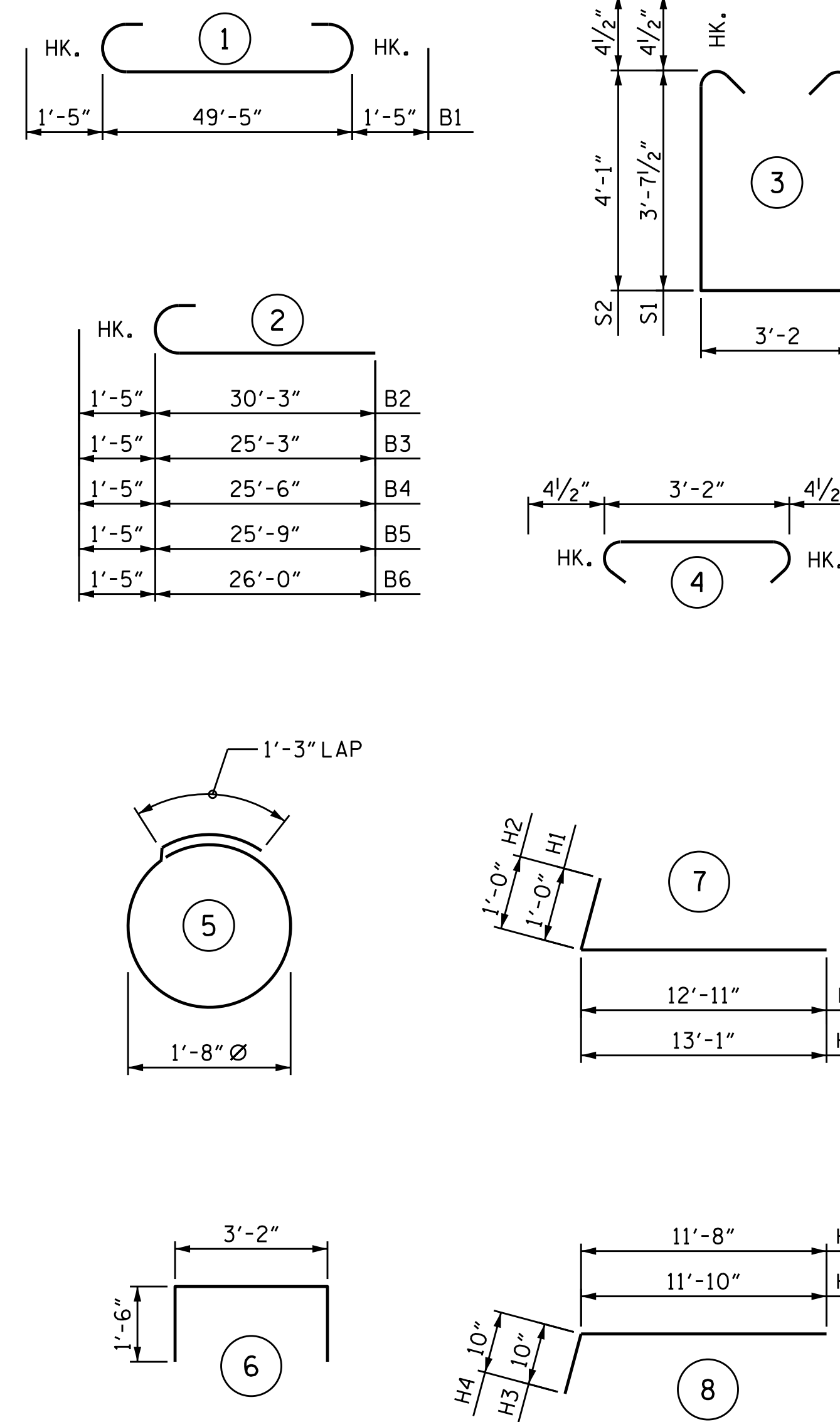


PART SECTION B-B



PART SECTION C-C

BAR TYPES



ALL BAR DIMENSIONS ARE OUT TO OUT.

BILL OF MATERIAL

| BAR | NO. | SIZE | TYPE | LENGTH | WEIGHT |
|-----|-----|------|------|---------|--------|
| B1 | 4 | #10 | 1 | 52'-3" | 899 |
| B2 | 4 | #10 | 2 | 31'-8" | 545 |
| B3 | 1 | #10 | 2 | 26'-8" | 115 |
| B4 | 1 | #10 | 2 | 26'-11" | 116 |
| B5 | 1 | #10 | 2 | 27'-2" | 117 |
| B6 | 1 | #10 | 2 | 27'-5" | 118 |
| B7 | 28 | #4 | STR | 26'-1" | 488 |
| B8 | 2 | #4 | STR | 21'-9" | 29 |
| B9 | 14 | #4 | STR | 3'-2" | 30 |
| B10 | 8 | #4 | STR | 9'-2" | 49 |
| B11 | 1 | #4 | STR | 7'-0" | 5 |
| B12 | 1 | #4 | STR | 7'-3" | 5 |
| B13 | 1 | #4 | STR | 7'-6" | 5 |
| B14 | 1 | #4 | STR | 7'-9" | 5 |
| H1 | 20 | #6 | 7 | 13'-11" | 418 |
| H2 | 20 | #6 | 7 | 14'-1" | 423 |
| H3 | 18 | #5 | 8 | 12'-6" | 235 |
| H4 | 18 | #5 | 8 | 12'-8" | 238 |
| K8 | 8 | #4 | STR | 3'-9" | 20 |
| S1 | 27 | #4 | 3 | 11'-2" | 1 |
| S2 | 29 | #4 | 3 | 12'-1" | 234 |
| S3 | 56 | #4 | 4 | 3'-11" | 147 |
| S4 | 24 | #4 | 5 | 6'-6" | 104 |
| U1 | 19 | #4 | 6 | 6'-2" | 78 |
| V1 | 79 | #4 | STR | 5'-10" | 308 |
| V2 | 38 | #5 | STR | 9'-9" | 386 |
| V3 | 36 | #4 | STR | 8'-8" | 208 |

REINFORCING STEEL 5,526 LBS.

CLASS A CONCRETE
 POUR #1 (CAP, COLLARS, & LOWER PART OF WINGS) 33.6 C.Y.
 POUR #2 (UPPER PART OF WINGS) 5.8 C.Y.
 TOTAL 39.4 C.Y.

HP 12 X 53 STEEL PILES
 No. 6 LIN FT. 450

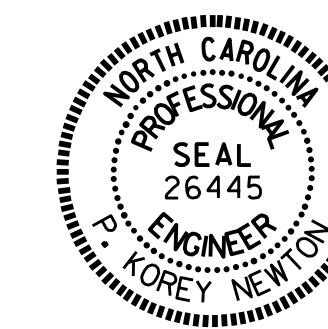
PILE REDRIVES NO. 3

STEEL PILE POINTS NO. 6

PILE DRIVING EQUIPMENT SETUP FOR HP 12 X 53 STEEL PILES NO. 6

PROJECT NO. BR-0017
 DUPLIN COUNTY
 STATION: 18+27.00 -L-

SHEET 3 OF 3



DocuSigned by:
 P. Corey Newton
 4FFE39D1431B407
 3/30/2021

STATE OF NORTH CAROLINA
 DEPARTMENT OF TRANSPORTATION
 RALEIGH
 SUBSTRUCTURE
 INTEGRAL
 END BENT 1

| REVISIONS | | | | | | SHEET NO. |
|-----------|-----|-------|-----|-----|-------|--------------|
| NO. | BY: | DATE: | NO. | BY: | DATE: | S-19 |
| 1 | | | 3 | | | TOTAL SHEETS |
| 2 | | | 4 | | | 28 |

DOCUMENT NOT CONSIDERED FINAL UNLESS ALL SIGNATURES COMPLETED

DRAWN BY: P. K. NEWTON DATE: 2/25/21
 CHECKED BY: P. D. BRYANT DATE: 3/1/21
 DESIGN ENGINEER OF RECORD: P. D. BRYANT DATE: 3/1/21