

**SUPERSTRUCTURE REINFORCING STEEL LENGTHS ARE BASED ON THE FOLLOWING MINIMUM SPLICE LENGTHS**

BAR SIZE	SUPERSTRUCTURE EXCEPT APPROACH SLABS, PARAPETS, AND BARRIER RAILS		APPROACH SLABS		PARAPETS AND BARRIER RAILS
	EPOXY COATED	UNCOATED	EPOXY COATED	UNCOATED	
#4	1'-11"	1'-7"	1'-11"	1'-7"	2'-6"
#5	2'-5"	2'-0"	2'-5"	2'-0"	3'-1"
#6	2'-10"	2'-5"	3'-7"	2'-5"	3'-8"

**— SUPERSTRUCTURE BILL OF MATERIAL —**

	CLASS AA CONCRETE ( CU.YDS.)	REINFORCING STEEL ( LBS.)	EPOXY COATED REINFORCING STEEL ( LBS.)
POUR #1	154.8	---	---
POUR #2	74.8	---	---
<b>TOTALS**</b>	229.6	23,908	24,204

\*\*QUANTITIES FOR BARRIER RAIL ARE NOT INCLUDED

**GROOVING BRIDGE FLOORS**

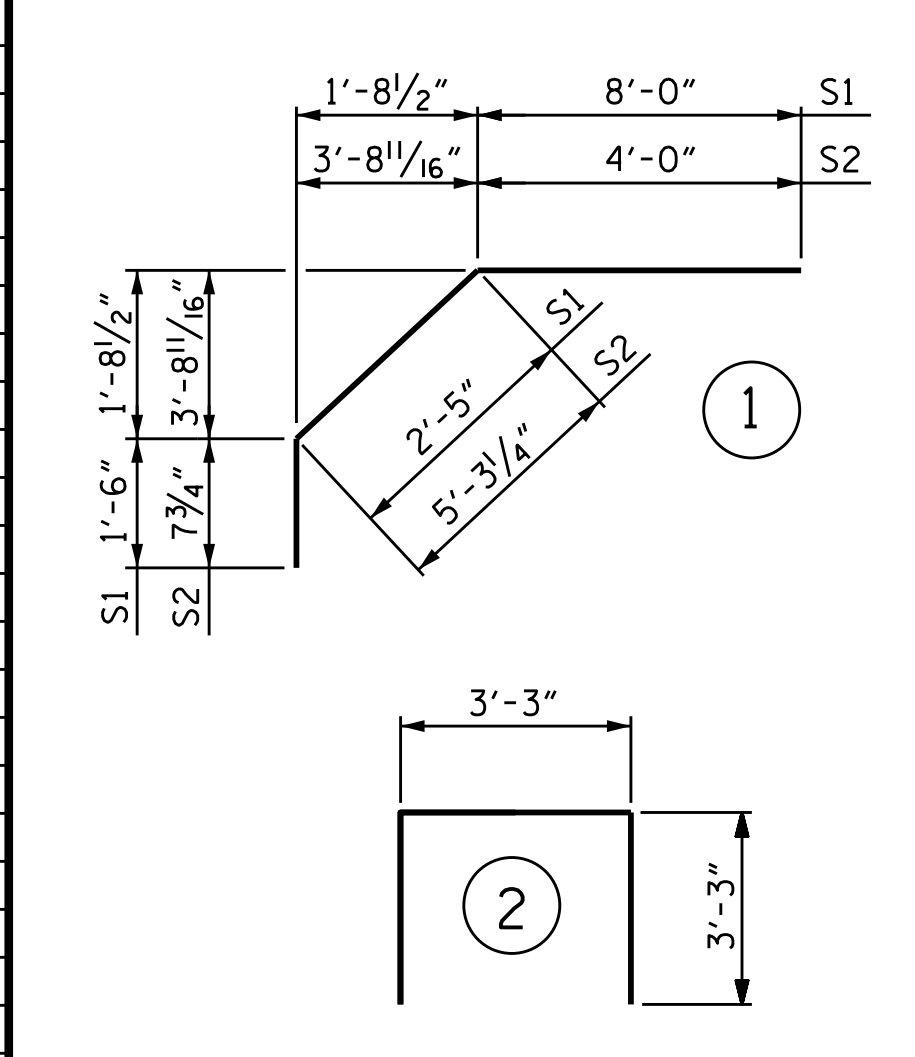
APPROACH SLABS	1017.9 SQ.FT.
BRIDGE DECK	5685.5 SQ.FT.
<b>TOTAL</b>	<b>6703.4 SQ.FT.</b>

**BILL OF MATERIAL**

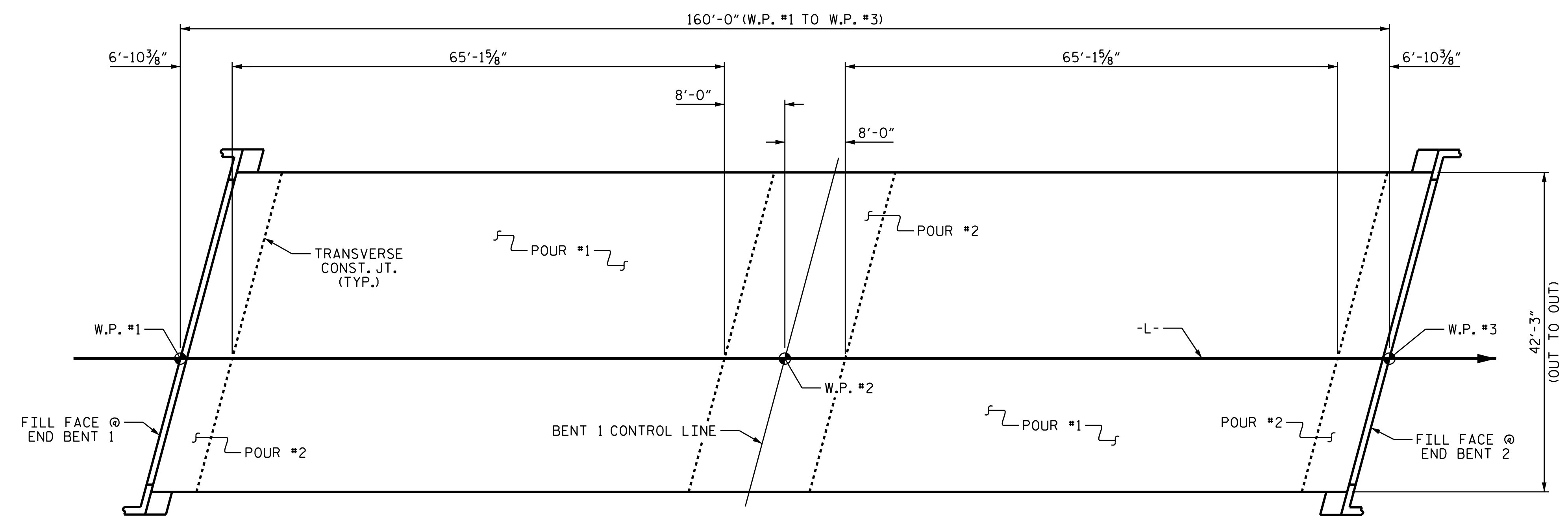
BAR	NO.	SIZE	TYPE	LENGTH	WEIGHT	BAR	NO.	SIZE	TYPE	LENGTH	WEIGHT
* A1	293	#5	STR	41'-11"	12810	* B1	170	#6	STR	15'-10"	4043
A2	293	#5	STR	41'-11"	12810	B2	156	#5	STR	54'-0"	8786
* A101	2	#5	STR	41'-2"	86	* B3	86	#4	STR	38'-0"	2183
* A102	2	#5	STR	39'-4"	82	* B4	43	#5	STR	58'-0"	2601
* A103	2	#5	STR	37'-5"	78	* B5	42	#5	STR	12'-0"	526
* A104	2	#5	STR	35'-7"	74	B6	46	#4	STR	10'-10"	333
* A105	2	#5	STR	33'-9"	70	K1	20	#4	STR	21'-6"	287
* A106	2	#5	STR	31'-10"	66	K2	16	#4	STR	6'-10"	73
* A107	2	#5	STR	30'-0"	63	K3	16	#4	STR	8'-1"	86
* A108	2	#5	STR	28'-2"	59	K4	8	#4	STR	7'-4"	39
* A109	2	#5	STR	26'-3"	55	K5	8	#4	STR	2'-3"	12
* A110	2	#5	STR	24'-5"	51	K6	8	#4	STR	2'-10"	15
* A111	2	#5	STR	22'-7"	47	K7	4	#4	STR	2'-6"	7
* A112	2	#5	STR	20'-8"	43						
* A113	2	#5	STR	18'-10"	39	* S1	72	#4	1	11'-11"	573
* A114	2	#5	STR	16'-11"	35	* S2	72	#4	1	9'-11"	477
* A115	2	#5	STR	15'-1"	31						
* A116	2	#5	STR	13'-3"	28	U1	72	#4	2	9'-9"	469
* A117	2	#5	STR	11'-4"	24						
* A118	2	#5	STR	9'-6"	20						
* A119	2	#5	STR	7'-7"	16						
* A120	2	#5	STR	5'-9"	12						
* A121	2	#5	STR	3'-11"	8						
* A122	2	#5	STR	2'-0"	4						
A201	2	#5	STR	41'-2"	86						
A202	2	#5	STR	39'-4"	82						
A203	2	#5	STR	37'-5"	78						
A204	2	#5	STR	35'-7"	74						
A205	2	#5	STR	33'-9"	70						
A206	2	#5	STR	31'-10"	66						
A207	2	#5	STR	30'-0"	63						
A208	2	#5	STR	28'-2"	59						
A209	2	#5	STR	26'-3"	55						
A210	2	#5	STR	24'-5"	51						
A211	2	#5	STR	22'-7"	47						
A212	2	#5	STR	20'-8"	43						
A213	2	#5	STR	18'-10"	39						
A214	2	#5	STR	16'-11"	35						
A215	2	#5	STR	15'-1"	31						
A216	2	#5	STR	13'-3"	28						
A217	2	#5	STR	11'-4"	24						
A218	2	#5	STR	9'-6"	20						
A219	2	#5	STR	7'-7"	16						
A220	2	#5	STR	5'-9"	12						
A221	2	#5	STR	3'-11"	8						
A222	2	#5	STR	2'-0"	4						

REINFORCING STEEL 23,908 LBS.  
\* EPOXY COATED REINF. STEEL 24,204 LBS.

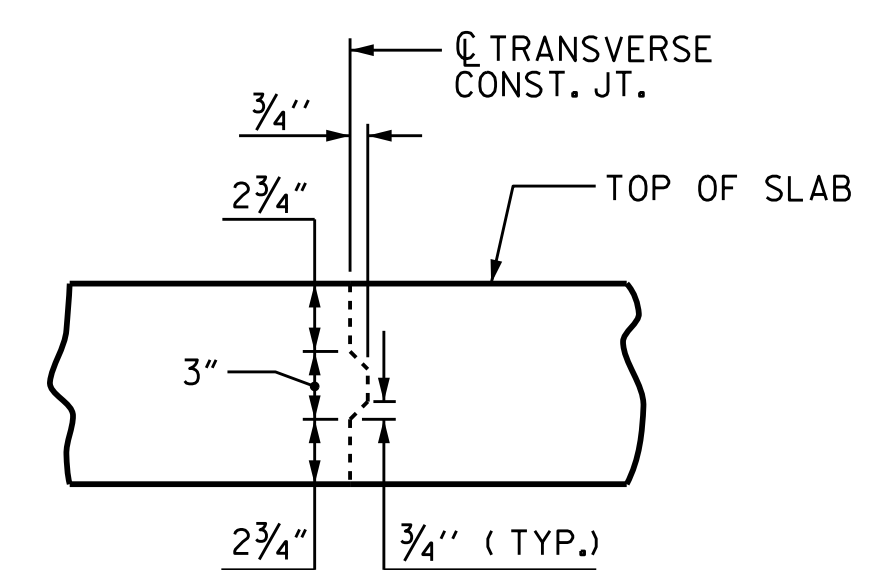
**— BAR TYPES —**



ALL BAR DIMENSIONS ARE OUT TO OUT



LAYOUT FOR COMPUTING AREA  
OF REINFORCED CONCRETE DECK SLAB  
( SQ. FT. = 6687 )



**TRANSVERSE CONSTRUCTION JOINT DETAIL**

NOTE: REINFORCING STEEL IN SLAB NOT SHOWN.  
LONGITUDINAL REINFORCING STEEL SHALL BE CONTINUOUS THRU JOINT

DRAWN BY : P. K. NEWTON DATE : 2/9/21  
CHECKED BY : M. K. BEARD DATE : 2/10/21  
DESIGN ENGINEER OF RECORD: P. D. BRYANT DATE : 3/1/21

30-MAR-2021 18:10  
K:\Structures\Plans\BR-0017.SMU.BOM.300012.dgn  
pknewton

PROJECT NO. BR-0017  
DUPLIN COUNTY  
STATION: 18+27.00 -L-



DocuSigned by:  
P. Corey Newton  
#FFE3D1451B407  
3/30/2021

STATE OF NORTH CAROLINA  
DEPARTMENT OF TRANSPORTATION  
RALEIGH  
STANDARD  
SUPERSTRUCTURE  
BILL OF MATERIAL

REVISIONS						SHEET NO.
NO.	BY:	DATE:	NO.	BY:	DATE:	S-16
1			3			TOTAL SHEETS
2			4			28

DOCUMENT NOT CONSIDERED  
FINAL UNLESS ALL  
SIGNATURES COMPLETED