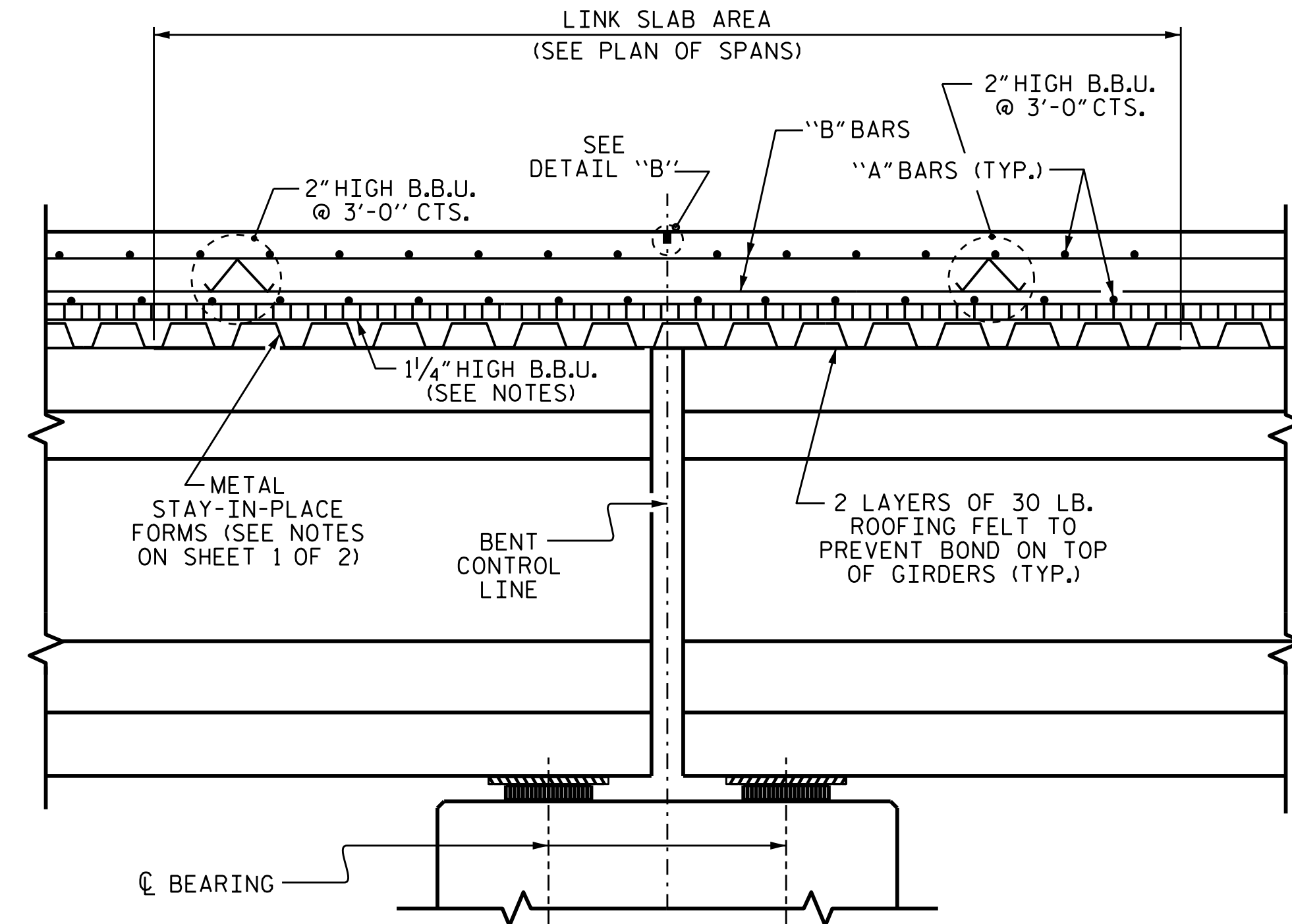
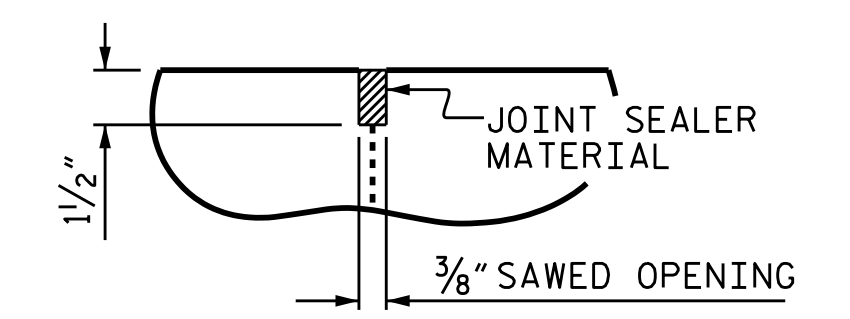


SECTION THRU INTEGRAL END BENT

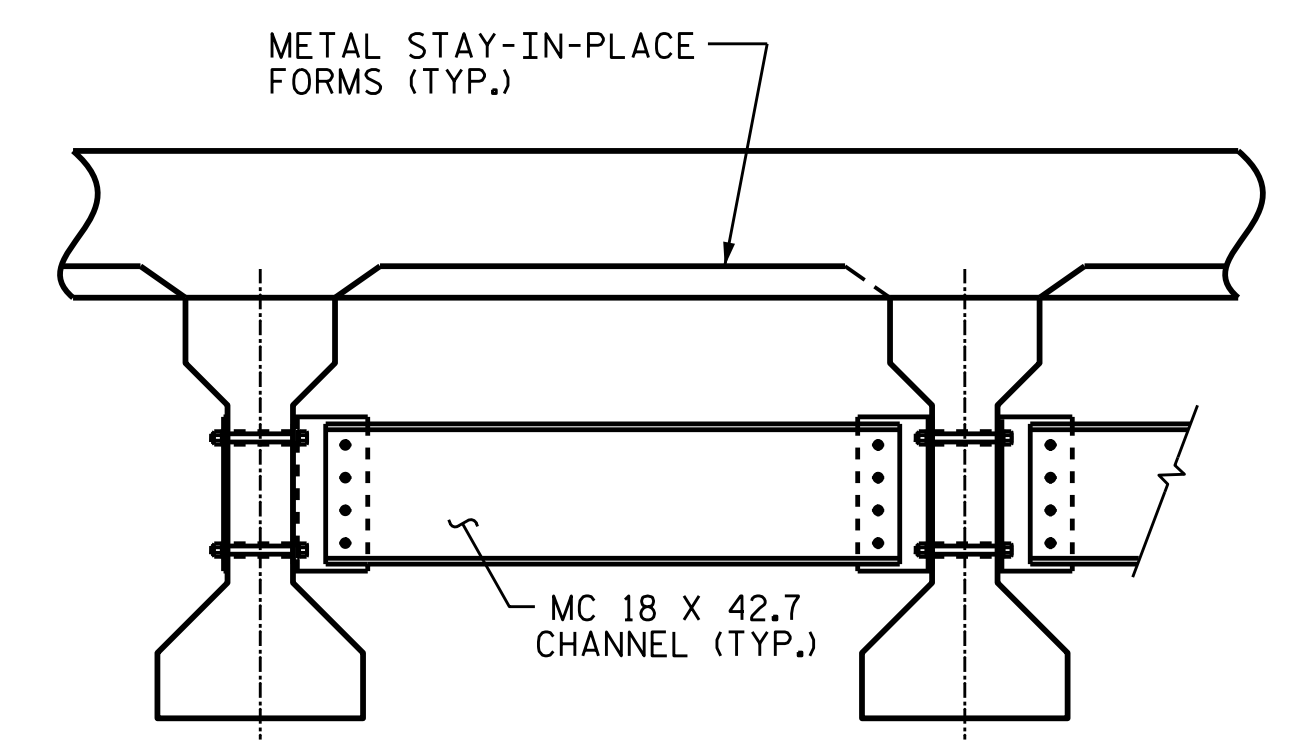


SECTION @ LINK SLAB



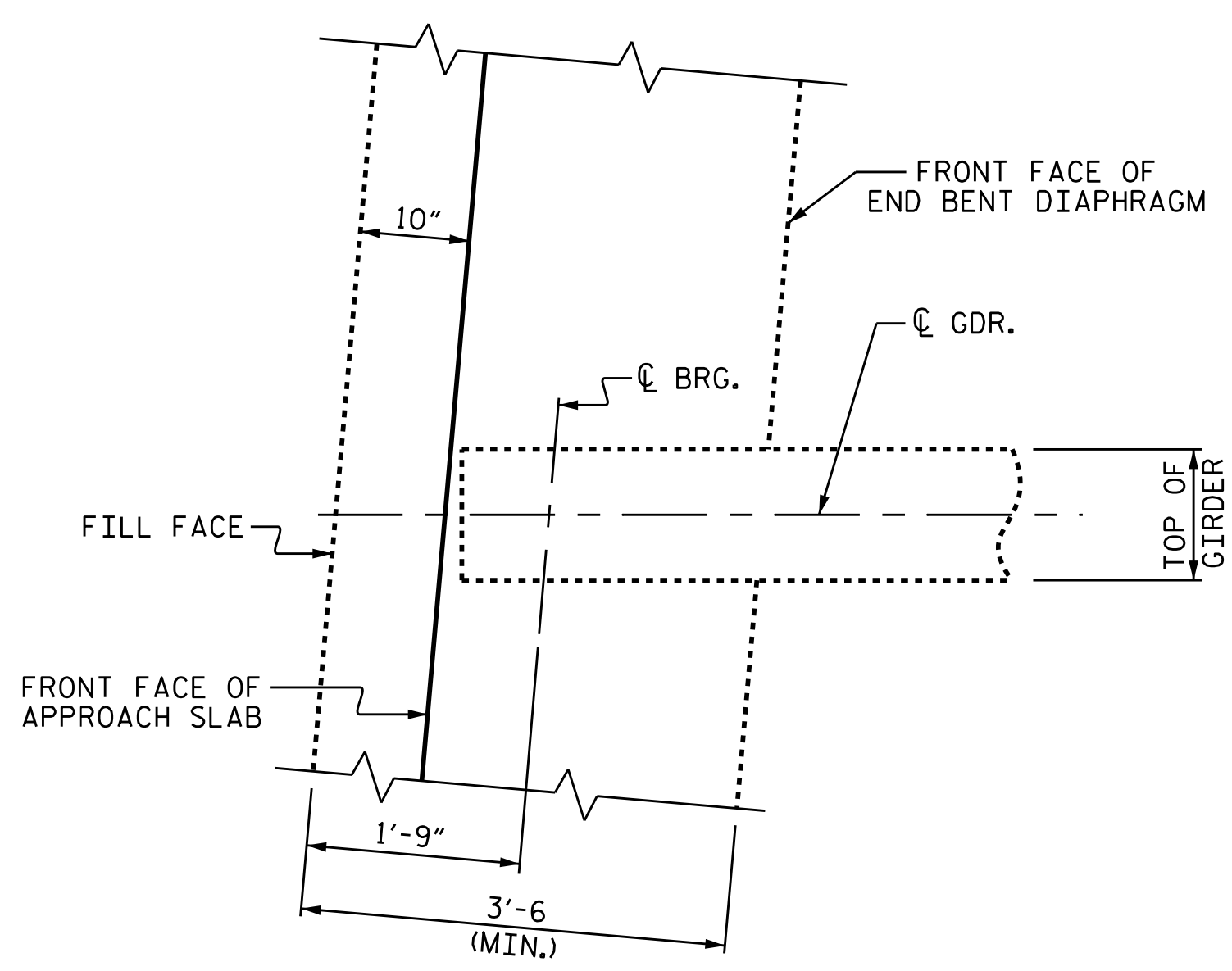
DETAIL "B"

A 1/2" DEEP CONTRACTION JOINT AT BENT CONTROL LINE SHALL BE SAWED WITHIN 24 HOURS OF POURING THE DECK. THE JOINT SHALL BE FILLED WITH JOINT SEALER MATERIAL. THE JOINT SEALER MATERIAL SHALL CONFORM TO THE REQUIREMENTS OF TYPE B LOW MODULUS SILICONE SEALANT. SEE SECTION 1028 OF THE STANDARD SPECIFICATIONS.

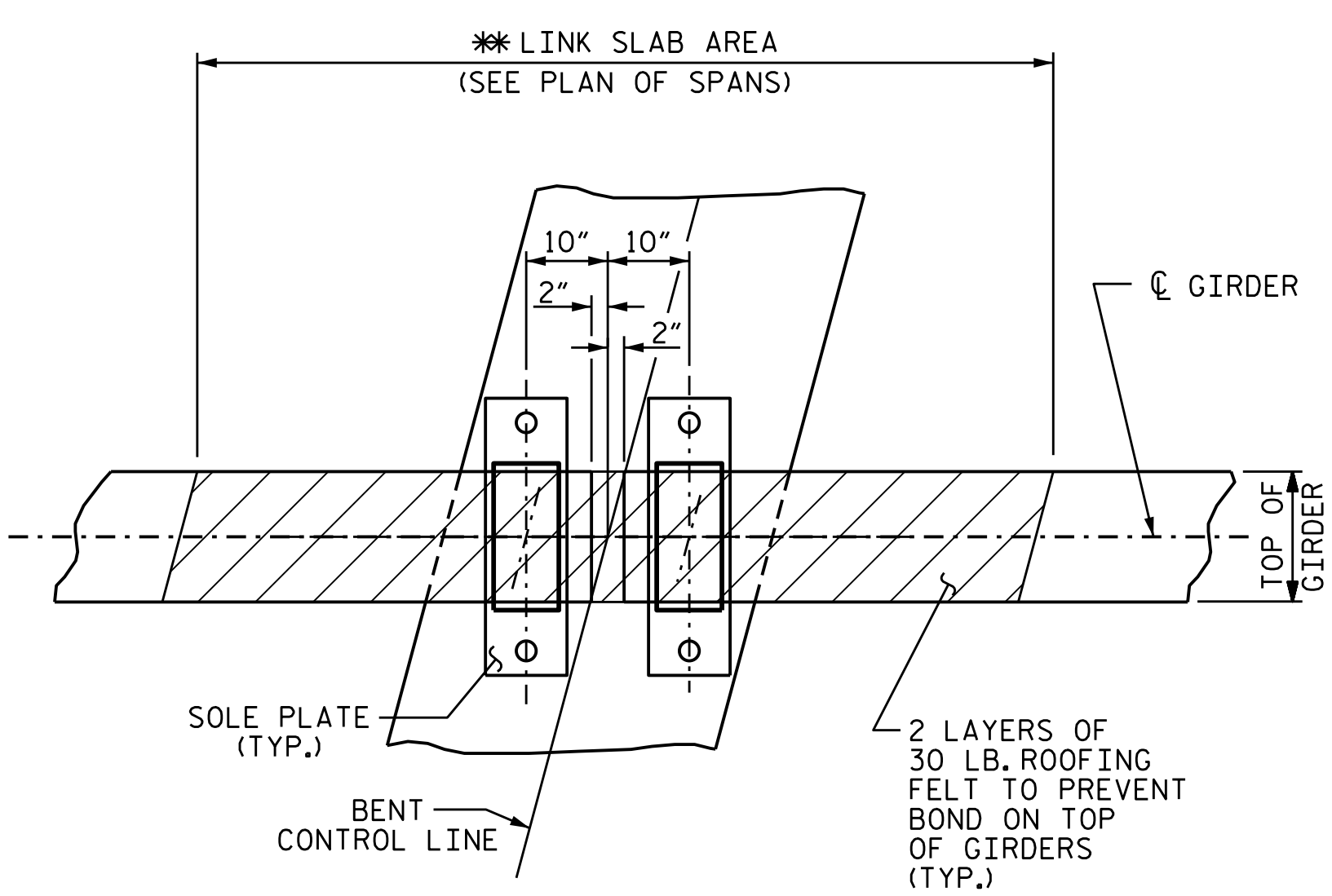


TYPICAL INTERMEDIATE DIAPHRAGM

SEE "INTERMEDIATE STEEL DIAPHRAGMS FOR TYPE III PRESTRESSED CONCRETE GIRDERS" SHEET FOR DETAILS.



PLAN @ INTEGRAL END BENT



PLAN @ BENT

* THE TOP OF THE GIRDER IN THE AREA OF THE LINK SLAB SHALL BE SMOOTH AND FREE OF STIRRUPS OR ANCHOR STUDS.

PROJECT NO. BR-0017
DUPLIN COUNTY
 STATION: 18+27.00 -L-

SHEET 2 OF 2



STATE OF NORTH CAROLINA
 DEPARTMENT OF TRANSPORTATION
 RALEIGH
 SUPERSTRUCTURE
 TYPICAL SECTION

DRAWN BY : M.K. BEARD DATE : 1/2021
 CHECKED BY : D.R. SHACKELFORD DATE : 2/2021
 DESIGN ENGINEER OF RECORD: P. BRYANT DATE : 3/1/21

DOCUMENT NOT CONSIDERED
 FINAL UNLESS ALL
 SIGNATURES COMPLETED

REVISIONS						SHEET NO.
NO.	BY:	DATE:	NO.	BY:	DATE:	S-6
1			3			TOTAL SHEETS
2			4			28