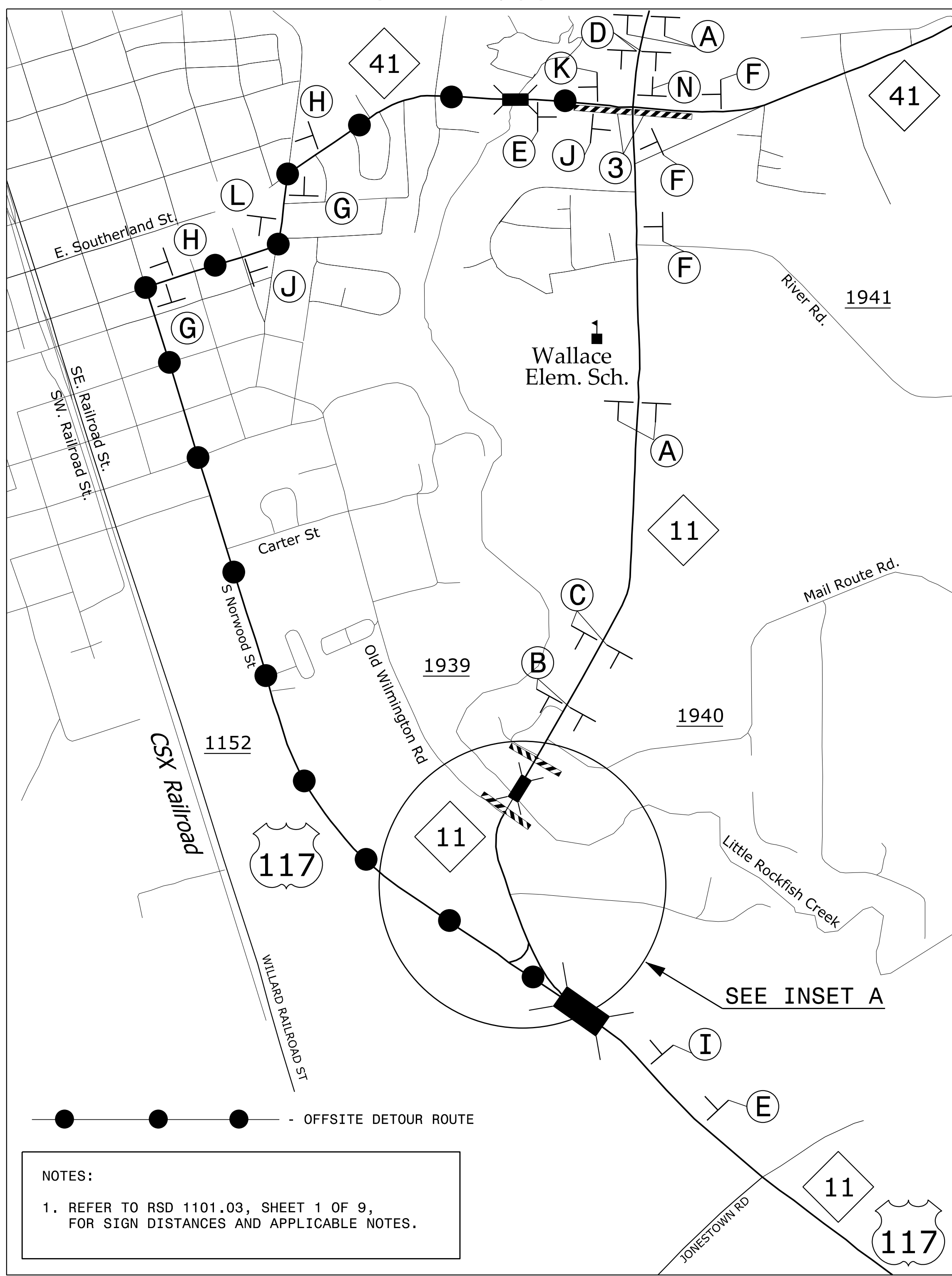
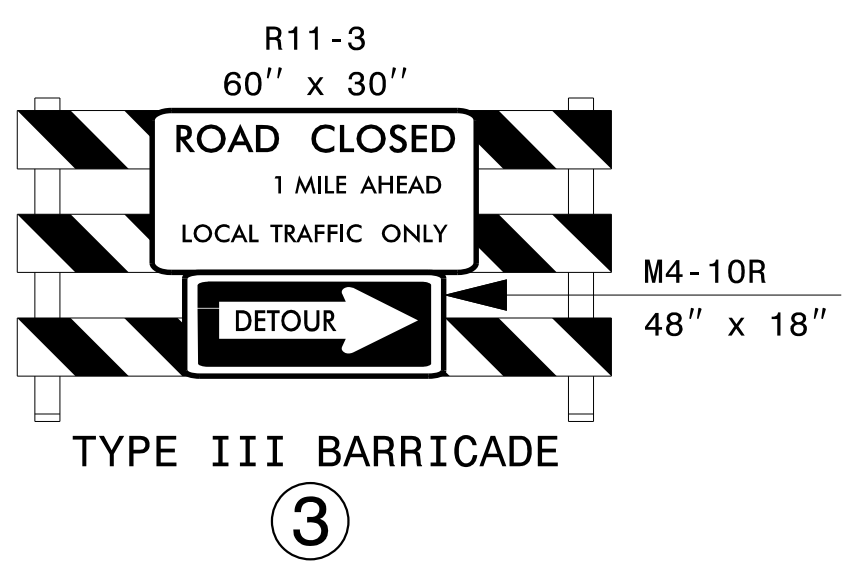
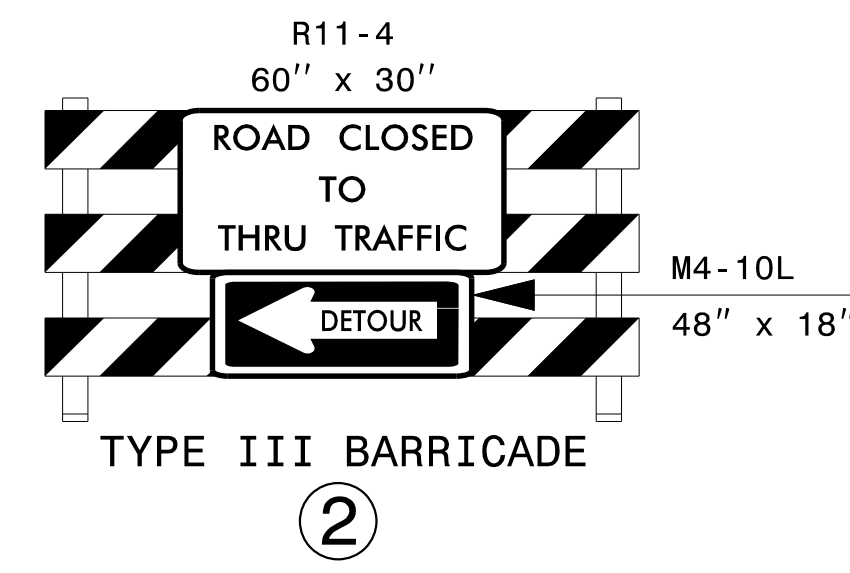
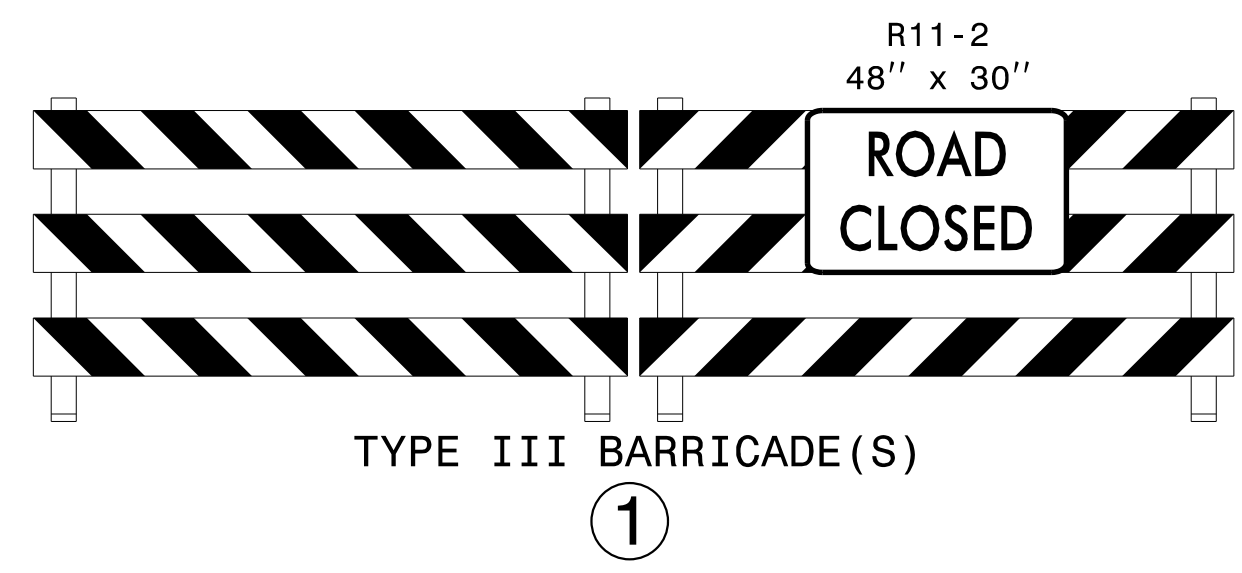
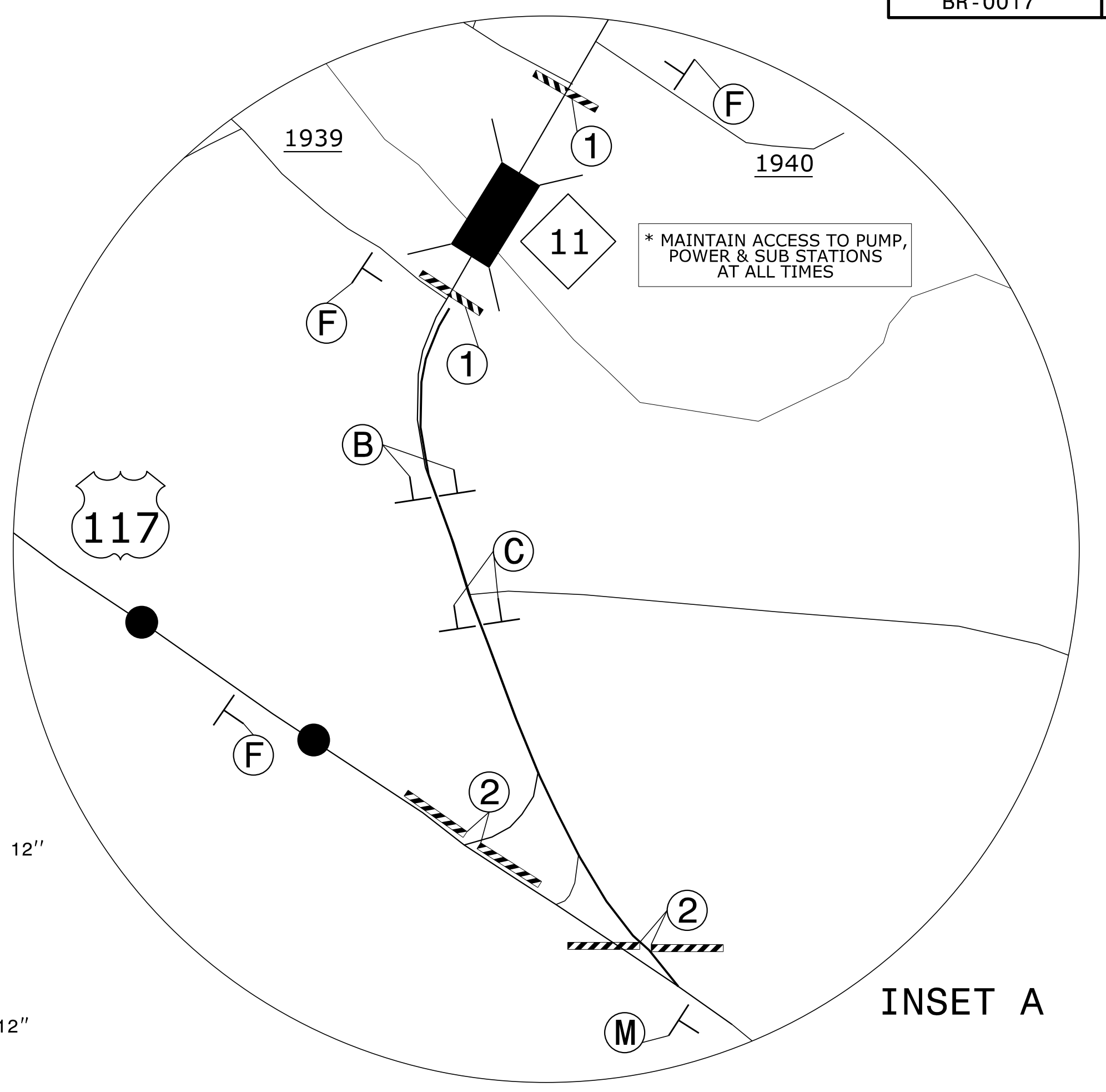
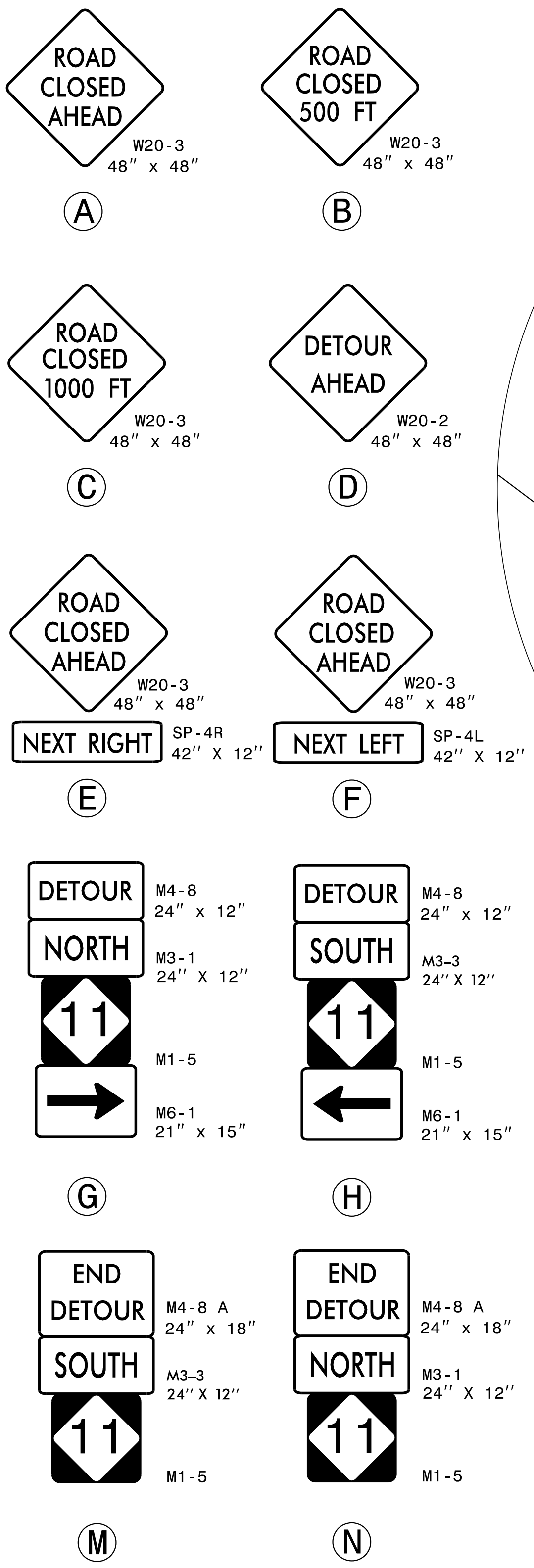


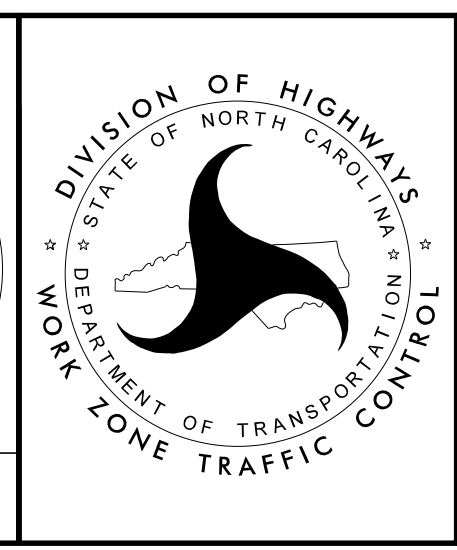
### DUPLIN COUNTY



**NOTES:**  
 1. REFER TO RSD 1101.03, SHEET 1 OF 9, FOR SIGN DISTANCES AND APPLICABLE NOTES.



APPROVED: *Kenneth C. Thornewell Jr., P.E.*  
 DATE: 5/10/2021  
 SEAL



OFFSITE DETOUR FOR NC 11

2/1/2021  
 S:\TMU\WZTC\DesignGroup\GISOB\DeBrew\Projects\BR-0017\BR-0017\_T020\_020\_BR-0017\_TC\_TMP\_2.dgn  
 User:wmdebrew