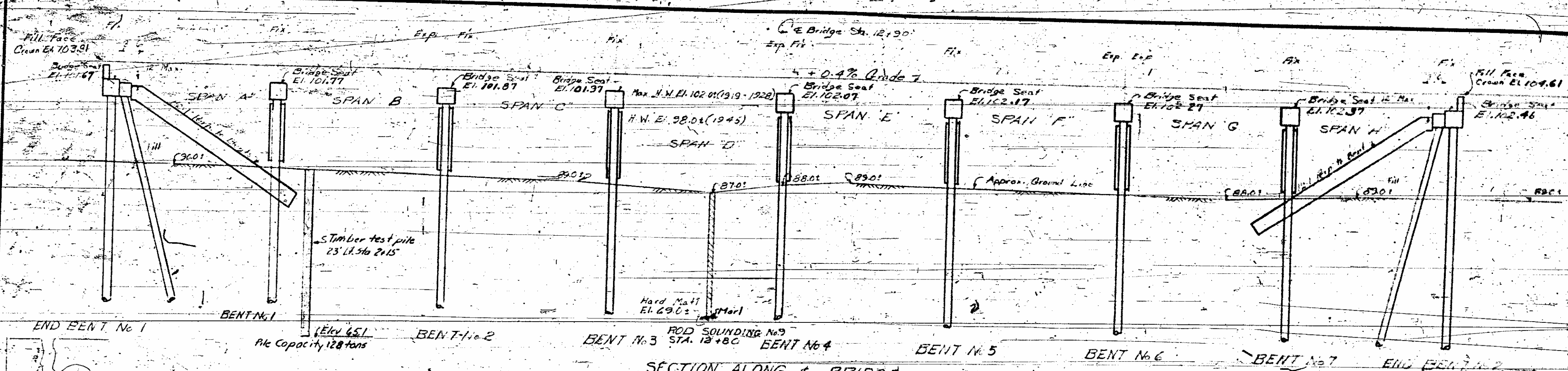


FED. ROAD DIST. NO.	STATE	PROJECT NO.	SHEET NO.	TOTAL SHEETS
2	N.C.	1	51	12

B.S. 2-7-20-28



**NOTE 5**

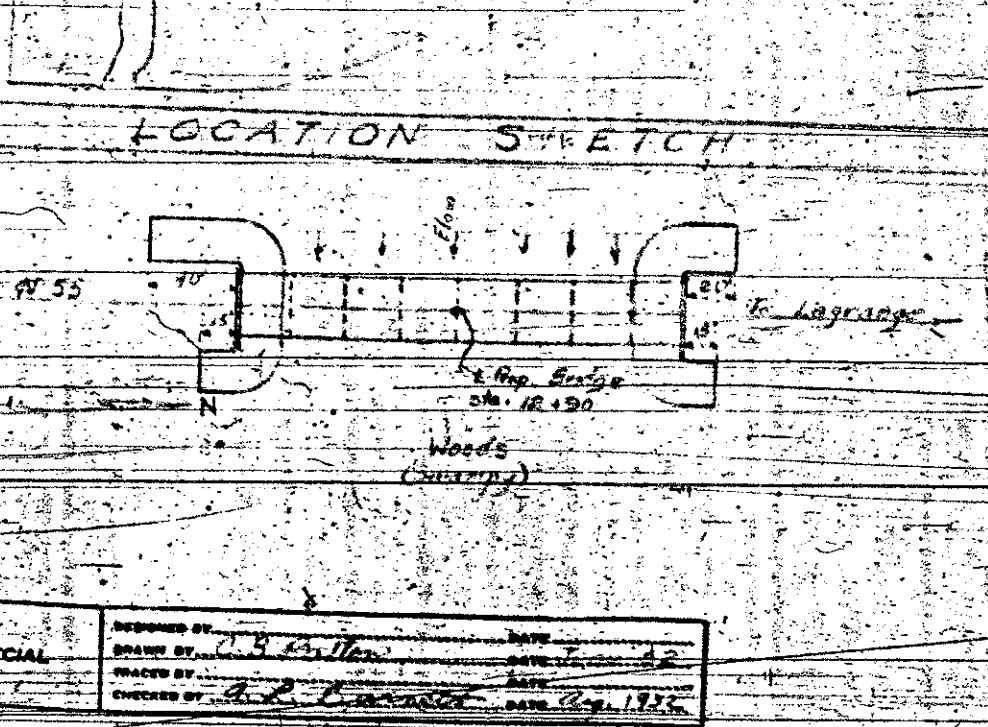
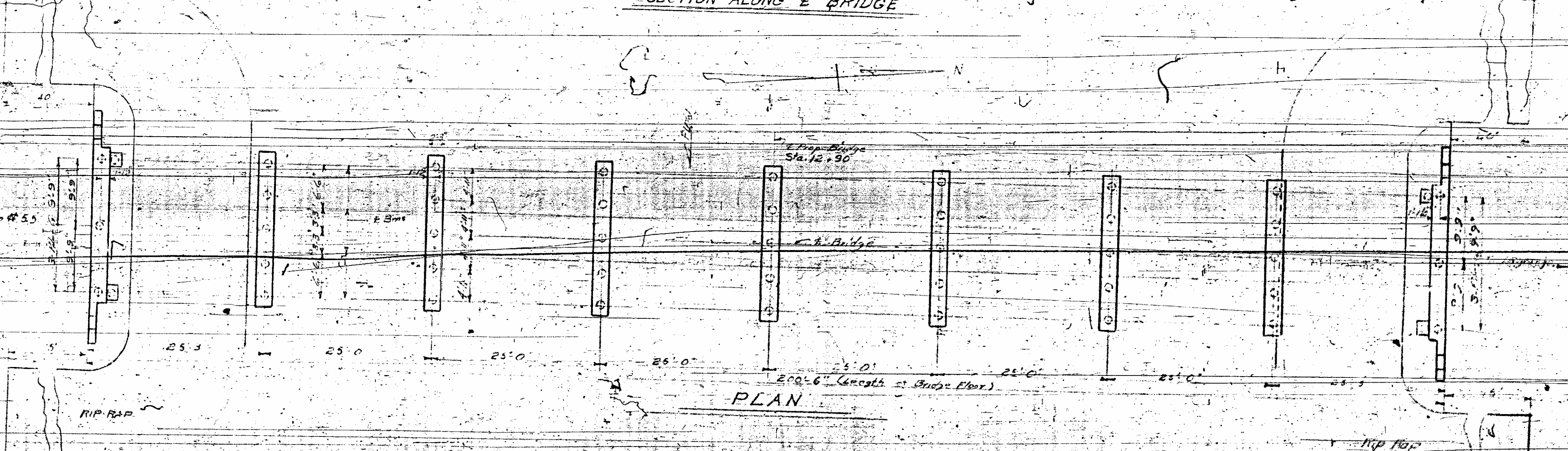
CAPACITY OF PILES: All piles shall be driven to a minimum bearing capacity of 10 tons each.

CREOSOTE PILES: Piles and bracing shall be treated to a minimum of 18% of creosote per cu. ft. of material. See Specification for surface finish requirements.

ASSUMED LIVE LOAD - 15 ft. x 13 ft.

NOTE: For other design data, see general notes, see Sheet S-1.

NOTE: Test piles will not be required. Under lat. to be based on piles 30 feet long for all braced abutments.



**BILL OF MATERIALS**

Class	Qty. Yds	Reinforcing Steel Lbs	Crossed Timber Piles No.	Crossed Timber Piles Lin. Ft.	Hardware Lbs	Rip-Rap Structural Steel Approx. Lbs
Superstructure	1258	28089				10,700
End Bent No 1	6.3	1028	5	190		
Bent No 2	4.2	680	5	190	212	36
Bent No 3	4.2	680	5	190	212	36
Bent No 4	4.2	680	5	190	212	36
Bent No 5	4.2	680	5	190	212	36
Bent No 6	4.2	680	5	190	212	36
Bent No 7	4.2	680	5	190	212	36
End Bent No 2	6.3	1028	5	190		
<b>TOTAL</b>	<b>167.8</b>	<b>34905</b>	<b>45</b>	<b>1710</b>	<b>1494</b>	<b>262</b>

Brig # 152

B.S. 2-7-20-28

LENORE COUNTY

STATION: 12+28

STATE OF NORTH CAROLINA  
STATE HIGHWAY AND  
PUBLIC WORKS COMMISSION  
PLAN 1

GENERAL DRAWING  
FOR BRIDGE BETWEEN  
Rt. 55 AND LAGRANGE

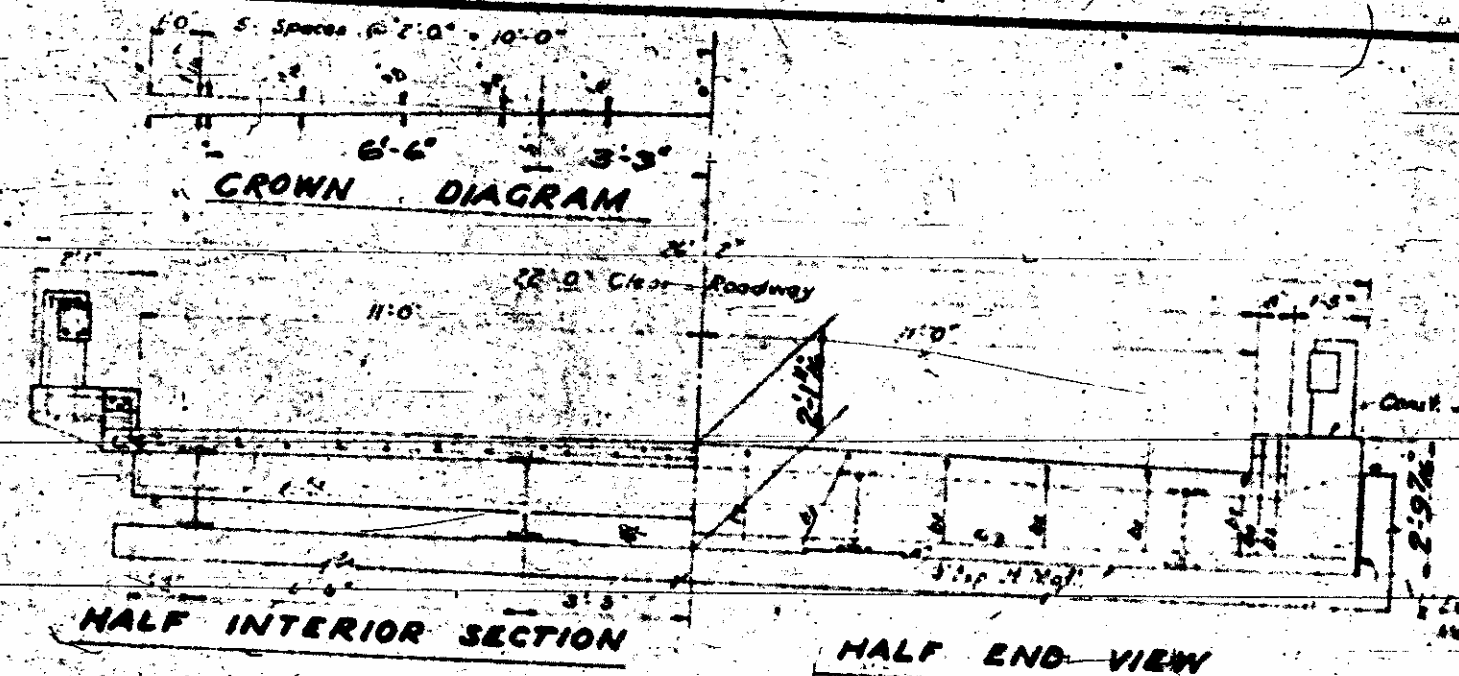
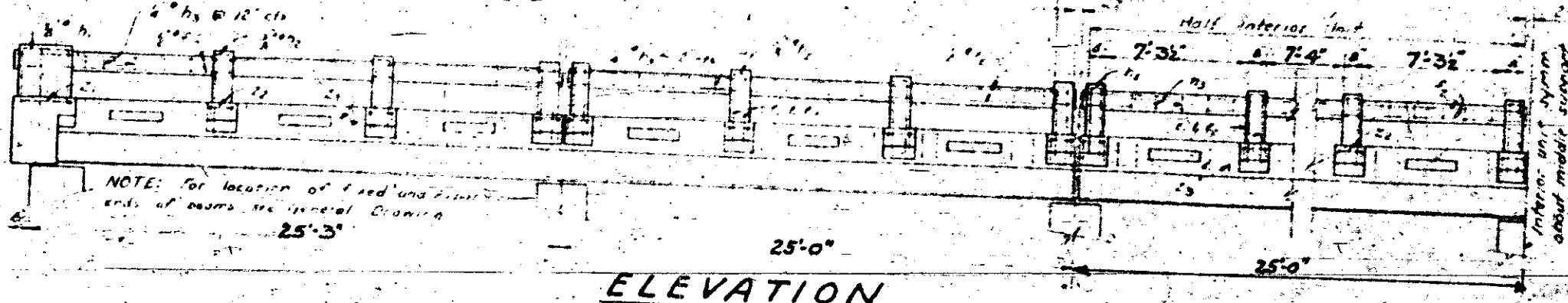
JUNE 1932

DESIGNED BY: J. B. ...  
CHECKED BY: A. B. ...



End Unit 7'-2" 7'-2" 7'-2" 7'-3" 7'-4" 7'-3"

NOTE: Two ply roofing felt shall be placed over joints in expansion joint material. See Specifications.



NO.	DATE	BY	CHKD.
1	M.C.		
2-7-20-28			

**DESIGN DATA**

Specifications A.A.S.H.O. 1930  
 Assumed Live Load H-15 44(1) tons  
 Impact Allowance See Specifications  
 Stress in extreme fiber at full load 18000 lbs. per sq. in.  
 Reinforcing steel in tension 60000 lbs. per sq. in.  
 Concrete in compression 1800 lbs. per sq. in.  
 Concrete in shear 50 lbs. per sq. in.  
 Equivalent fluid pressure of earth 30 lbs. per sq. ft.

**GENERAL NOTE**

**CONCRETE:** 47 concrete to be Class A. Standard size No. 3 coarse aggregate to be used throughout. No construction joints to be permitted except as noted. All exposed surfaces of concrete, unless otherwise noted, shall be chamfered as follows: Superstructure 3" Expansion joints 3" Substructure 3"

**REINFORCING STEEL:** All reinforced steel shall be deformed bars, except 3" dia. dimensions relative to reinforcing steel and centers of bars. No splices other than those shown on plans will be permitted. All reinforcing steel shall be securely held in correct position.

**EXPANSION JOINT MATERIAL:** Expansion joint material may be either neoprene or cork conforming to the requirements of A.A.S.H.O. Spec. M-50.

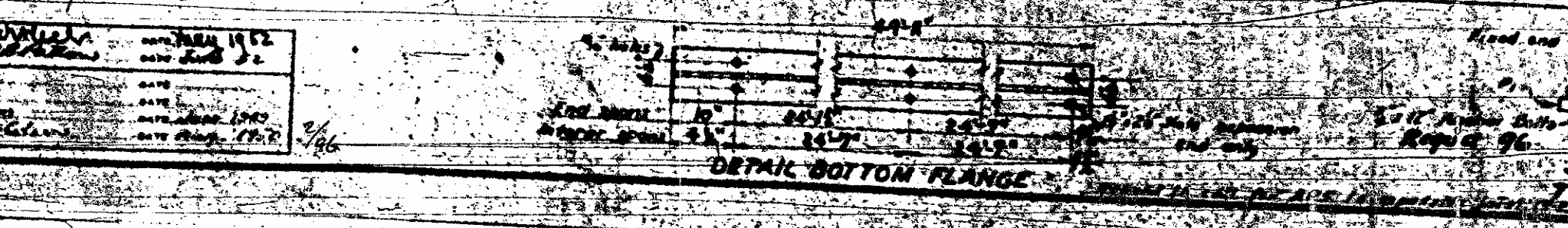
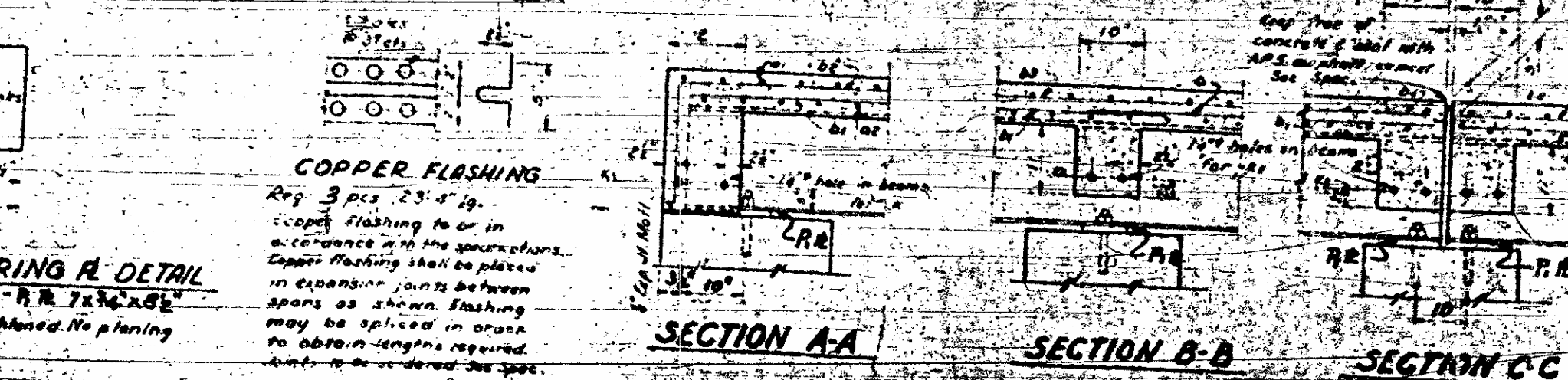
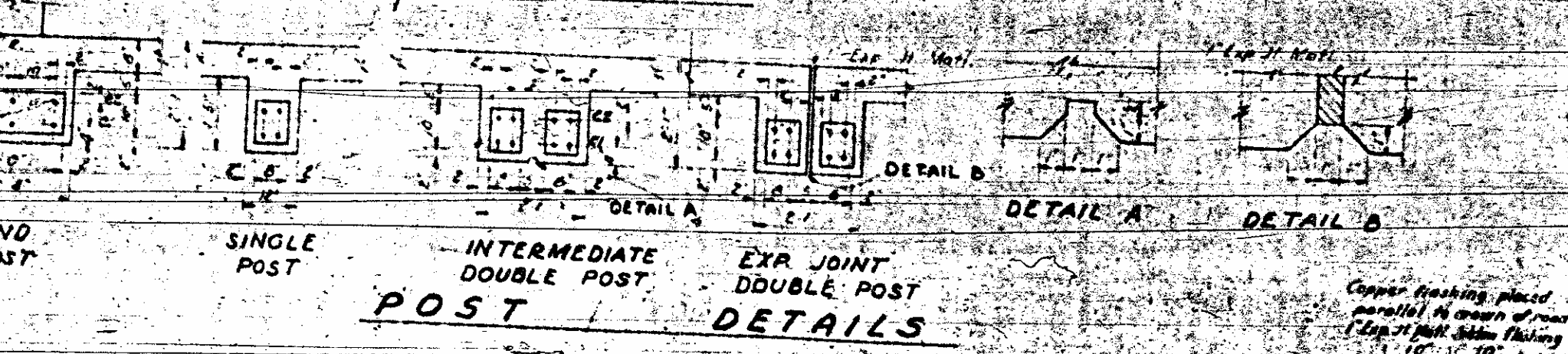
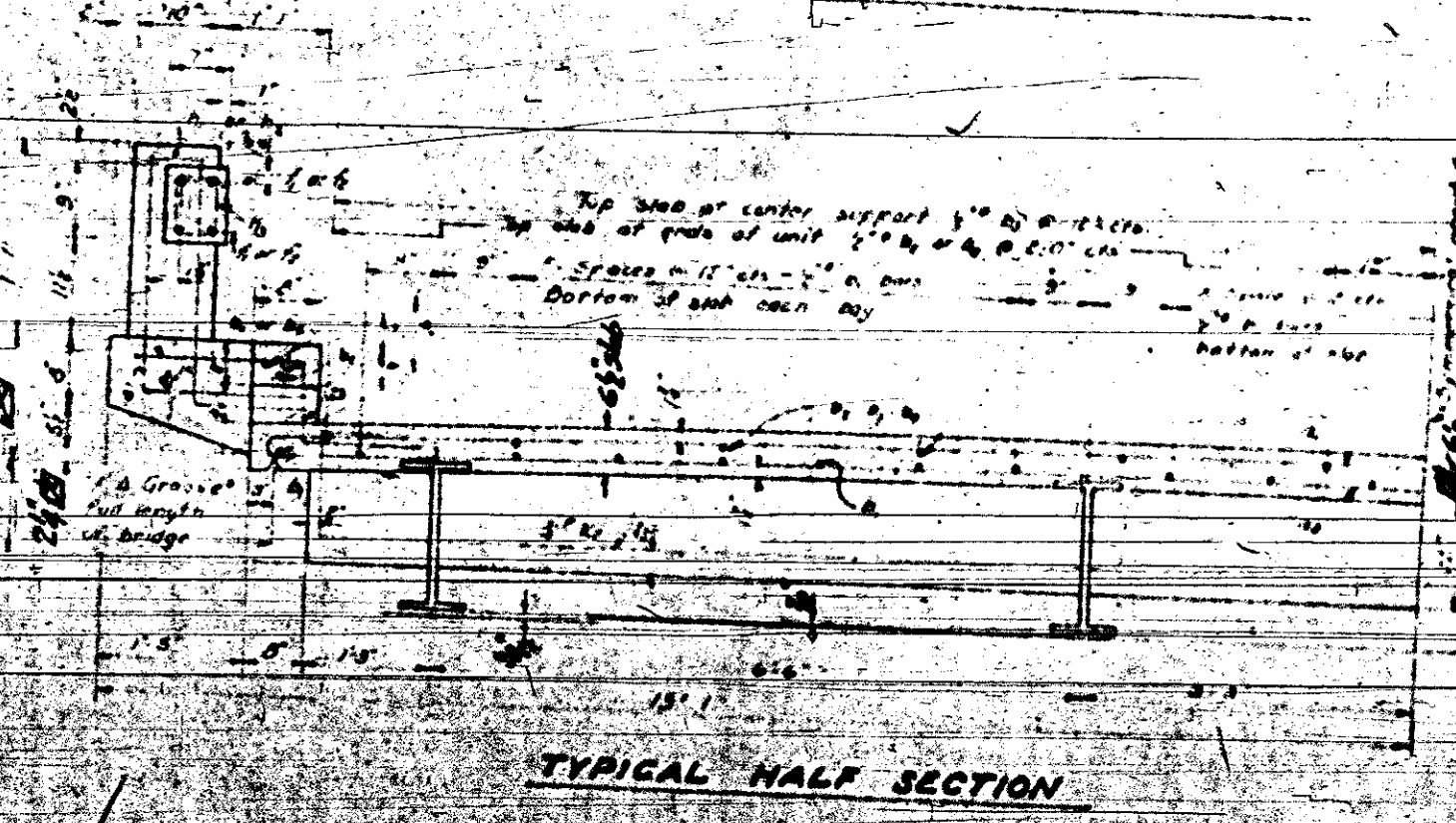
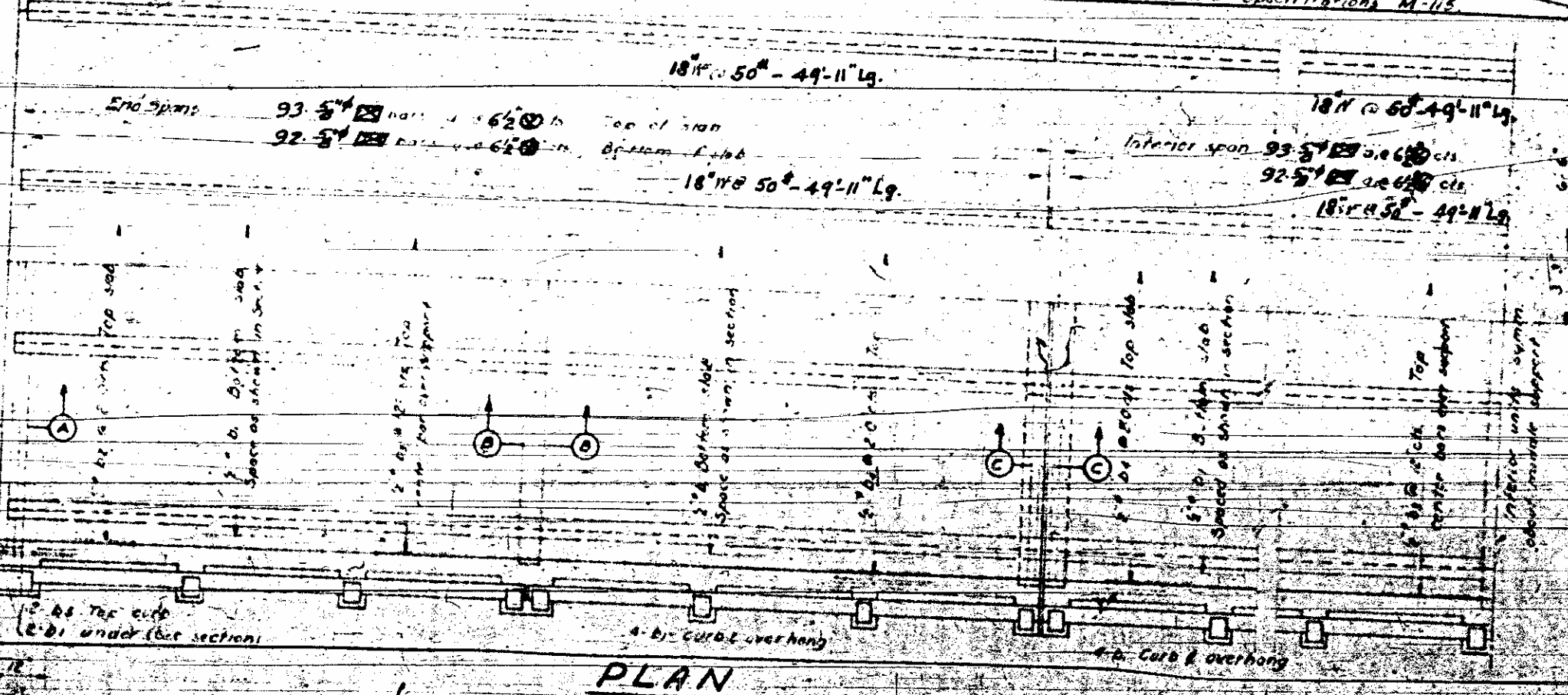
**STRUCTURAL STEEL:** Structural steel shall be given one shop and one field coat of red lead and apply two field coats of aluminum paint. See Specifications. Detail Drawings shall be submitted to the Bridge Engineer for approval in mechanical drawings, and accepted.

**NAME PLATES:** Two name plates shall be provided for the bridge. One shall be placed on each right hand end just approaching the bridge.

**MATERIAL & WORKMANSHIP:** All material and workmanship shall be in accordance with the Specifications of the N.C. State Highway & Public Works Commission.

**MECHANICAL VIBRATION:** In concrete, that in handrails, shall be completed by mechanical vibration.

**SURFACE FINISH:** Concrete surfaces shall be finished in accordance with the Specifications, except the substructure shall receive a Class C surface finish.



**BILL OF MATERIAL FOR 4 DOUBLE 25'-0" SPANS**

BAR	No.	Size	Type	Length	Weight
1	372	1/2"	1	2415'	9409
2	368	1/2"	2	2310'	8828
3	816	1"	3	28'-4"	3718
4	24	1"	2	20'-4"	333
5	92	1"	3	15'-6"	463
6	92	1"	3	19'-0"	414
7	8	1"	2	28'-4"	154
8	182	1"	2	8'-10"	333
9	132	1"	2	5'-7"	316
10	16	1"	3	28'-6"	275
11	48	1"	3	24'-7"	788
12	4	1"	2	3'-8"	8
13	60	1"	2	6'-0"	60
14	404	1"	2	2'-5"	163
15	4	1"	2	18'-0"	155
16	40	1"	2	15'-0"	322
17	4	1"	2	8'-0"	84
18	60	1"	2	7'-11"	246
19	192	1"	2	2'-6"	381

**BEST SECT**

**LENOIR COUNTY**

**STATION: 12190**

**SPANS ATYRUM**

STATE OF NORTH CAROLINA  
 STATE HIGHWAY AND PUBLIC WORKS COMMISSION

**STANDARD 1 BEAM SUPERSTRUCTURE CONCRETE FLOOR & RAIL 4 DOUBLE 25'-0" SPANS 22' ROADWAY**

JUNE 1928

REVISIONS

NO.	DATE	DESCRIPTION
1	1928	...
2	1928	...

APPROVED BY: [Signature]

DATE: [Date]



