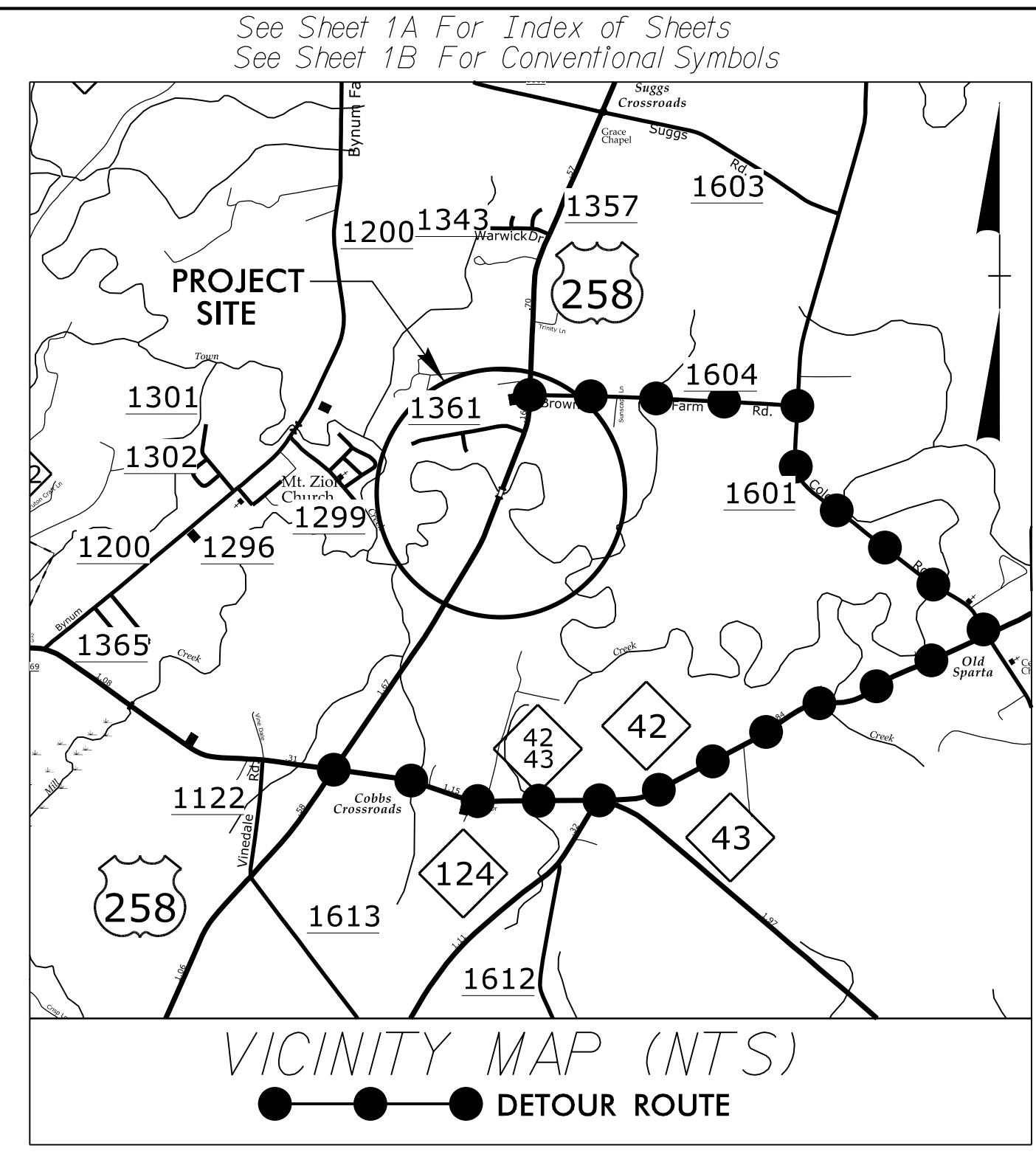


09.08/99

TIP PROJECT: B-4931



PLANS

STATE OF NORTH CAROLINA
DIVISION OF HIGHWAYS

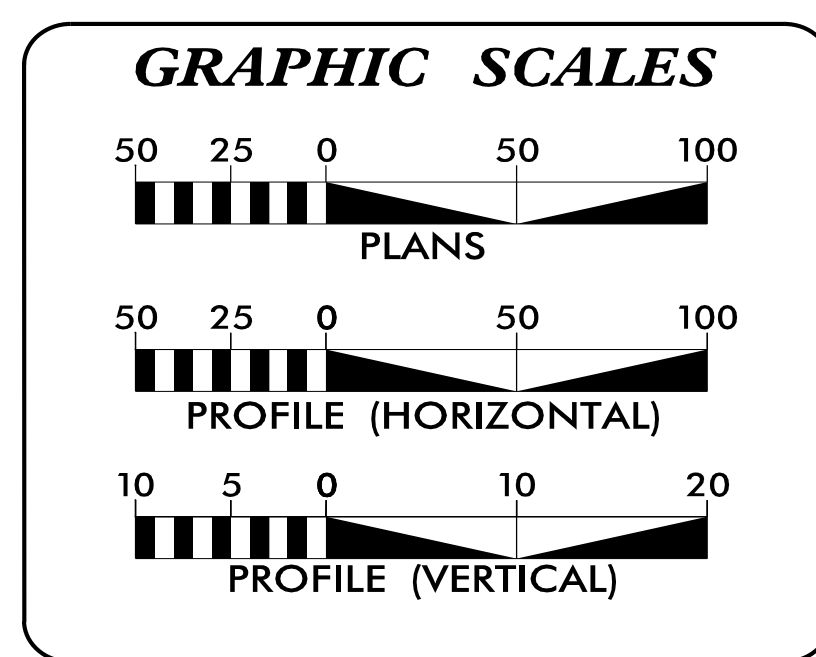
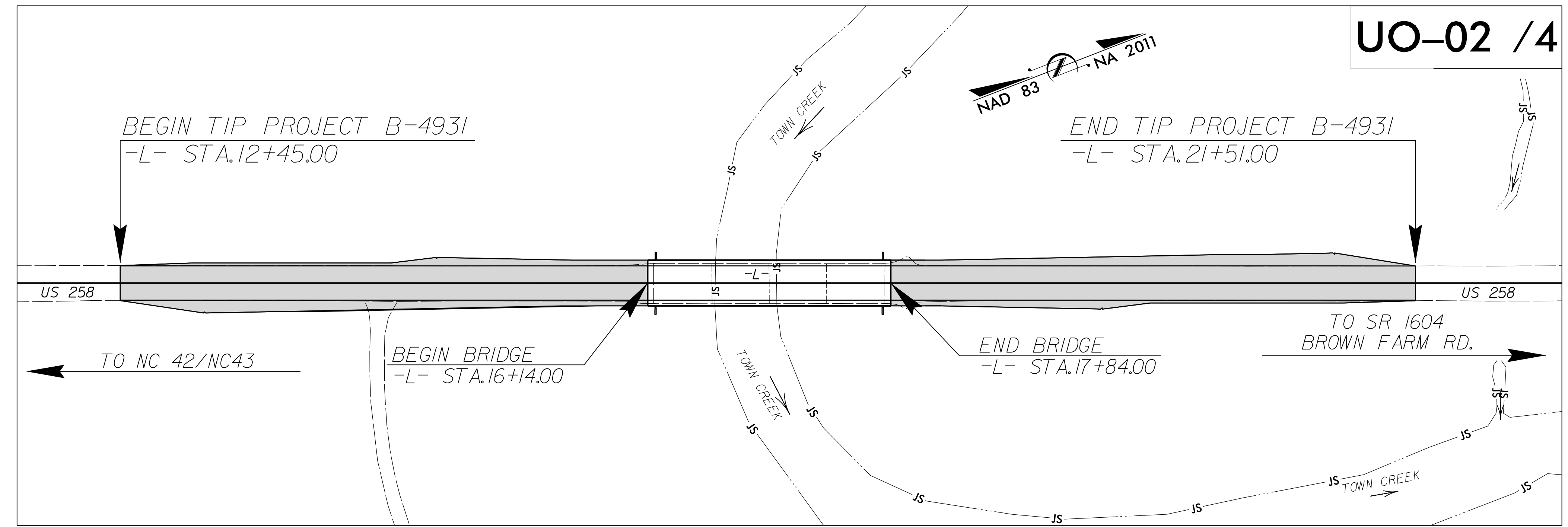
UTILITIES BY OTHERS PLANS
EDGECOMBE COUNTY

**LOCATION: REPLACE BRIDGE NO. 22 OVER
TOWN CREEK ON US 258**

TYPE OF WORK: UNDERGROUND COMMUNICATION RELOCATION

T.I.P. NO.	SHEET NO.
B-4931	UO-1

NOTE:
ALL UTILITY WORK SHOWN ON THIS SHEET WILL BE DONE BY OTHERS.
NO PAYMENT WILL BE MADE TO THE CONTRACTOR FOR UTILITY WORK SHOWN ON THIS SHEET.



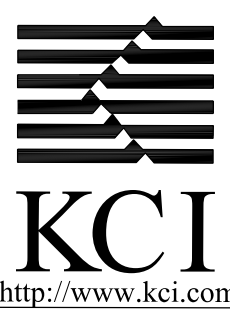
INDEX OF SHEETS

SHEET NO.:	DESCRIPTION:
UO-1	TITLE SHEET
UO-02	UBO PLAN SHEET

UTILITY OWNERS WITH CONFLICTS


(A) COMMUNICATION - CENTURYLINK

PREPARED IN THE OFFICE OF:



KCI Associates of N.C., P.A.
4505 Falls of Neuse Road, Suite 400
Raleigh, NC 27609
Phone (919) 783-9214
Fax (919) 783-9266

JOHN FAISON UTILITY PROJECT MANAGER
L. KELSEY BARTLETT PROJECT UTILITY COORDINATOR
L. KELSEY BARTLETT PROJECT UTILITY DESIGNER



DIVISION OF HIGHWAYS
UTILITIES UNIT
1000 BIRCH RIDGE DRIVE
RALEIGH NC 27610

KRISTIN BARNES, P.E. DISTRICT ENGINEER
LARRY JAMES UTILITIES COORDINATOR
KIM MOORE DIVISION UTILITIES ENGINEER

20-JAN-2020 10:17
M:\2018\251501945\19 B-4931\Utilities\290_001_B-4931\ut_tsh_U001_psh.dgn
\$\$\$\$\$SERVNAME\$\$\$\$\$

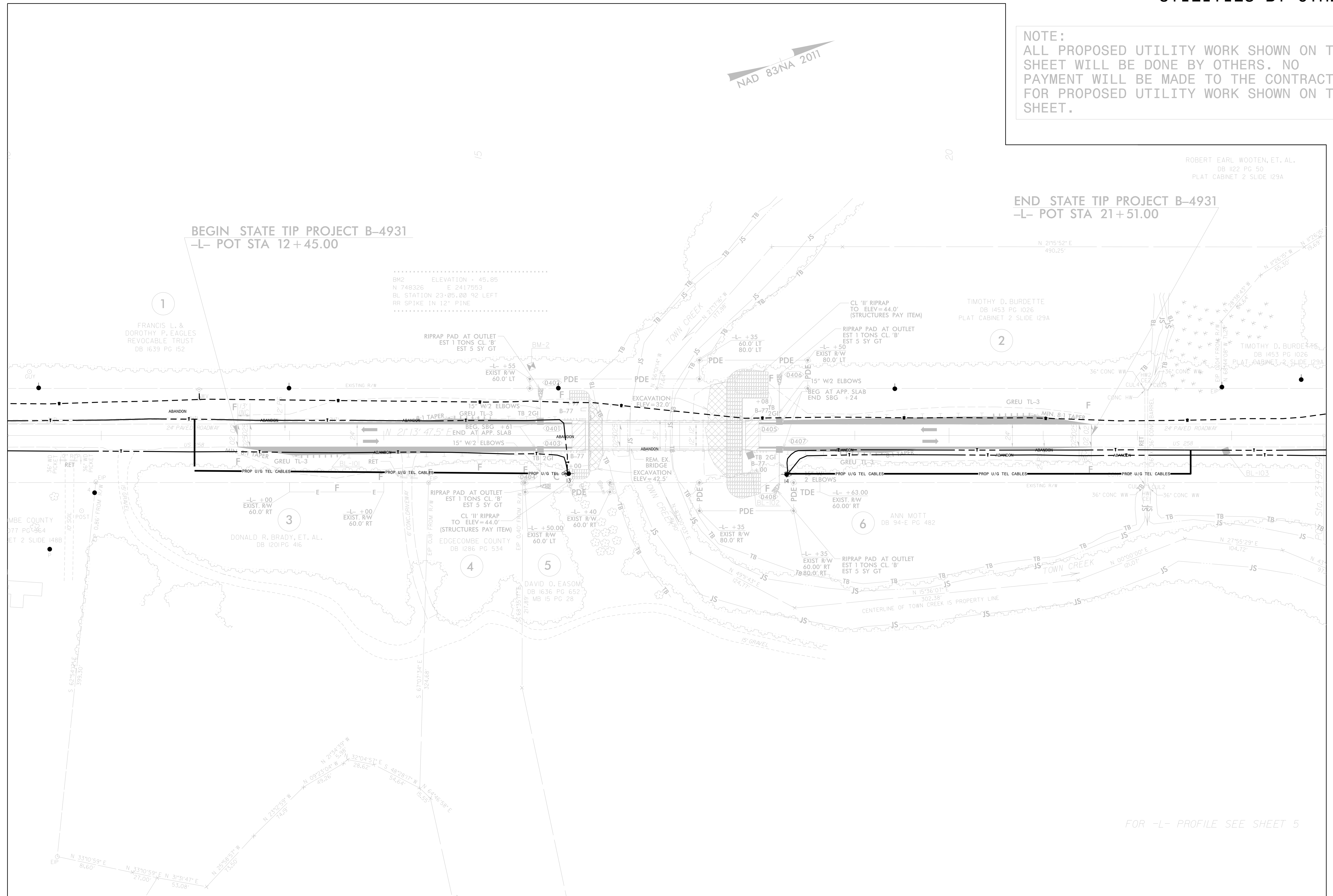
UTILITIES BY OTHERS

NOTE:
 ALL PROPOSED UTILITY WORK SHOWN ON THIS SHEET WILL BE DONE BY OTHERS. NO PAYMENT WILL BE MADE TO THE CONTRACTOR FOR PROPOSED UTILITY WORK SHOWN ON THIS SHEET.

ROBERT EARL WOOTEN, ET. AL.
 DB 1122 PG 50
 PLAT CABINET 2 SLIDE 129A

END STATE TIP PROJECT B-4931
 -L- POT STA 21+51.00

BEGIN STATE TIP PROJECT B-4931
 -L- POT STA 12+45.00



BM2 ELEVATION = 45.85
 N 748326 E 2417553
 BL STATION 23+05.00 92 LEFT
 RR SPIKE IN 12" PINE

1
 FRANCIS L. & DOROTHY P. EAGLES
 REVOCABLE TRUST
 DB 1639 PG 152

TIMOTHY D. BURDETTE
 DB 1453 PG 1026
 PLAT CABINET 2 SLIDE 129A

TIMOTHY D. BURDETTE
 DB 1453 PG 1026
 PLAT CABINET 2 SLIDE 129A

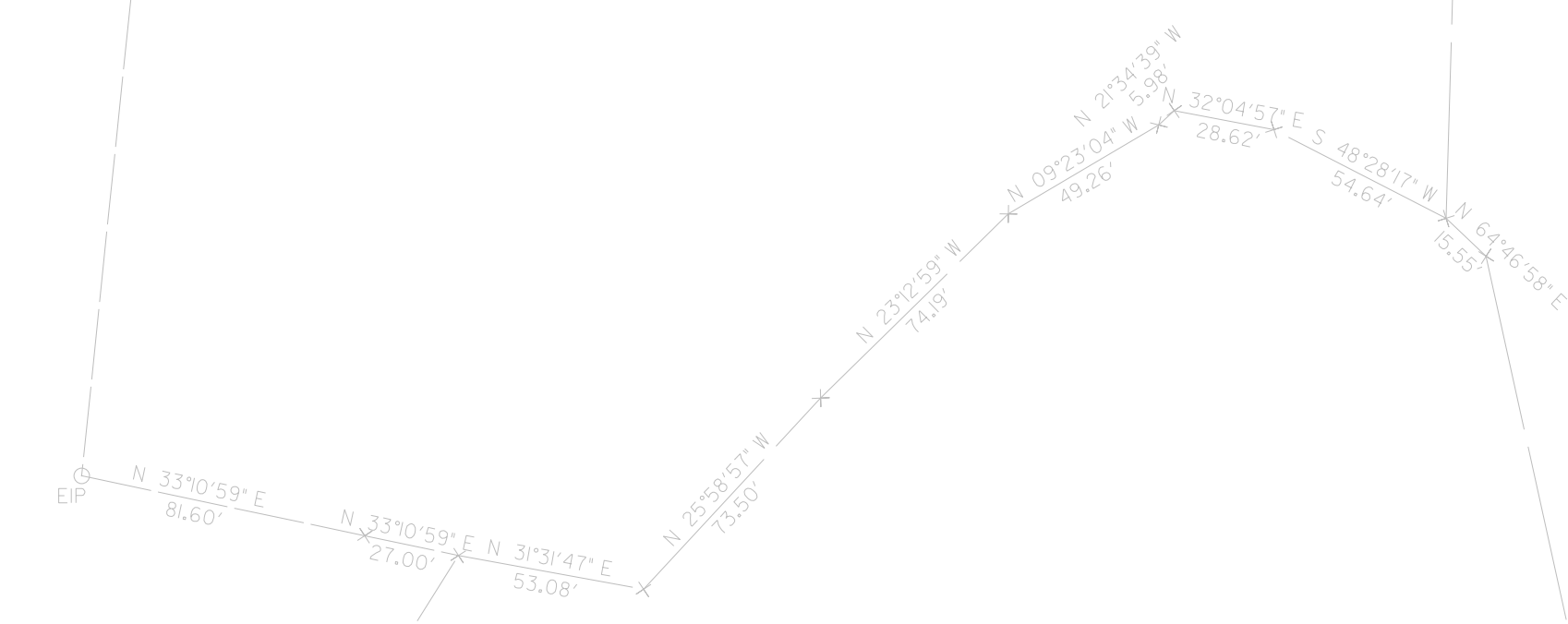
3
 DONALD R. BRADY, ET. AL.
 DB 1201 PG 416

4
 EDGECOMBE COUNTY
 DB 1286 PG 534

5
 DAVID O. EASOM
 DB 1636 PG 652
 MB 15 PG 28

6
 ANN MOTT
 DB 94-E PG 482

MBE COUNTY
 377 PG 364
 ET 2 SLIDE 148B



FOR -L- PROFILE SEE SHEET 5

8/17/99
 C:\AN-2000\B01245.19 B-4931\Utilities\B-4931_UT_U0PUT.dgn
 20:20:16
 \$\$\$\$\$\$USERNAME\$\$\$\$\$\$