

11.25

11.30

11.35

11.40

11.45

11.50

11.55

11.60

11.65

11.70

11.75

11.80

11.85

11.90

11.95

12.00

12.05

12.10

12.15

12.20

12.25

12.30

12.35

12.40

12.45

12.50

12.55

12.60

12.65

12.70

12.75

12.80

12.85

12.90

12.95

13.00

13.05

13.10

13.15

13.20

13.25

13.30

13.35

13.40

13.45

13.50

13.55

13.60

13.65

13.70

13.75

13.80

13.85

13.90

13.95

14.00

14.05

14.10

14.15

14.20

14.25

14.30

14.35

14.40

14.45

14.50

14.55

14.60

14.65

14.70

14.75

14.80

14.85

14.90

14.95

15.00

15.05

15.10

15.15

15.20

15.25

15.30

15.35

15.40

15.45

15.50

15.55

15.60

15.65

15.70

15.75

15.80

15.85

15.90

15.95

16.00

16.05

16.10

16.15

16.20

16.25

16.30

16.35

16.40

16.45

16.50

16.55

16.60

16.65

16.70

16.75

16.80

16.85

16.90

16.95

17.00

17.05

17.10

17.15

17.20

17.25

17.30

17.35

17.40

17.45

17.50

17.55

17.60

17.65

17.70

17.75

17.80

17.85

17.90

17.95

18.00

18.05

18.10

18.15

18.20

18.25

18.30

18.35

18.40

18.45

18.50

18.55

18.60

18.65

18.70

18.75

18.80

18.85

18.90

18.95

19.00

19.05

19.10

19.15

19.20

19.25

19.30

19.35

19.40

19.45

19.50

19.55

19.60

19.65

19.70

19.75

19.80

19.85

19.90

19.95

20.00

20.05

20.10

20.15

20.20

20.25

20.30

20.35

20.40

20.45

20.50

20.55

20.60

20.65

20.70

20.75

20.80

20.85

20.90

20.95

21.00

21.05

21.10

21.15

21.20

21.25

21.30

21.35

21.40

21.45

21.50

21.55

21.60

21.65

21.70

21.75

21.80

21.85

21.90

21.95

22.00

22.05

22.10

22.15

22.20

22.25

22.30

22.35

22.40

22.45

22.50

22.55

22.60

22.65

22.70

22.75

22.80

22.85

22.90

22.95

23.00

23.05

23.10

23.15

23.20

23.25

23.30

23.35

23.40

23.45

23.50

23.55

23.60

23.65

23.70

23.75

23.80

23.85

23.90

23.95

24.00

24.05

24.10

24.15

24.20

24.25

24.30

24.35

24.40

24.45

24.50

24.55

24.60

24.65

24.70

24.75

24.80

24.85

24.90

24.95

25.00

25.05

25.10

25.15

25.20

25.25

25.30

25.35

25.40

25.45

25.50

25.55

25.60

25.65

25.70

25.75

25.80

25.85

25.90

25.95

26.00

26.05

26.10

26.15

26.20

26.25

26.30

26.35

26.40

26.45

26.50

26.55

26.60

26.65

26.70

26.75

26.80

26.85

26.90

26.95

27.00

27.05

27.10

27.15

27.20

27.25

27.30

27.35

27.40

27.45

27.50

27.55

27.60

27.65

27.70

27.75

27.80

27.85

27.90

27.95

28.00

28.05

28.10

28.15

28.20

28.25

28.30

28.35

28.40

28.45

28.50

28.55

28.60

28.65

28.70

28.75

28.80

28.85

28.90

28.95

29.00

29.05

29.10

29.15

29.20

29.25

29.30

29.35

29.40

29.45

29.50

29.55

29.60

29.65

29.70

29.75

29.80

29.85

29.90

29.95

30.00

30.05

30.10

30.15

30.20

30.25

30.30

30.35

30.40

30.45

30.50

30.55

30.60

30.65

30.70

30.75

30.80

30.85

30.90

30.95

31.00

31.05

31.10

31.15

31.20

31.25

31.30

31.35

31.40

31.45

31.50

31.55

31.60

31.65

31.70

31.75

31.80

31.85

31.90

31.95

32.00

32.05

32.10

32.15

32.20

32.25

32.30

32.35

32.40

32.45

32.50

32.55

32.60

32.65

32.70

32.75

32.80

32.85

32.90

32.95

33.00

33.05

33.10

33.15

33.20

33.25

33.30

33.35

33.40

33.45

33.50

33.55

33.60

33.65

33.70

33.75

33.80

33.85

33.90

33.95

34.00

34.05

34.10

34.15

34.20

34.25

34.30

34.35

34.40

34.45

34.50

34.55

34.60

34.65

34.70

34.75

34.80

34.85

34.90

34.95

35.00

35.05

35.10

35.15

35.20

35.25

35.30

35.35

35.40

35.45

35.50

35.55

35.60

35.65

35.70

35.75

35.80

35.85

35.90

35.95

36.00

36.05

36.10

36.15

36.20

36.25

36.30

36.35

36.40

36.45

36.50

36.55

36.60

36.65

36.70

36.75

36.80

36.85

36.90

36.95

37.00

37.05

37.10

37.15

37.20

37.25

37.30

37.35

37.40

37.45

37.50

37.55

37.60

37.65

37.70

37.75

37.80

37.85

37.90

37.95

38.00

38.05

38.10

38.15

38.20

38.25

38.30

38.35

38.40

38.45

38.50

38.55

38.60

38.65

38.70

38.75

38.80

38.85

38.90

38.95

39.00

39.05

39.10

39.15

39.20

39.25

39.30

39.35

39.40

39.45

39.50

39.55

39.60

39.65

39.70

39.75

39.80

39.85

39.90

39.95

40.00

40.05

40.10

40.15

40.20

40.25

40.30

40.35

40.40

40.45

40.50

40.55

40.60

40.65

40.70

40.75

40.80

40.85

40.90

40.95

41.00

41.05

41.10

41.15

41.20

41.25

41.30

41.35

41.40

41.45

41.50

41.55

41.60

41.65

41.70

41.75

41.80

41.85

41.90

41.95

42.00

42.05

42.10

42.15

42.20

42.25

42.30

42.35

42.40

42.45

42.50

42.55

42.60

42.65

42.70

42.75

42.80

42.85

42.90

42.95

43.00

43.05

43.10

43.15

43.20

43.25

43.30

43.35

43.40

43.45

43.50

43.55

43.60

43.65

43.70

43.75

43.80

43.85

43.90

43.95

44.00

44.05

44.10

44.15

44.20

44.25

44.30

44.35

44.40

44.45

44.50

44.55

44.60

44.65

44.70

44.75

44.80

44.85

44.90

44.95

45.00

45.05

45.10

45.15

45.20

45.25

45.30

45.35

45.40

45.45

45.50

45.55

45.60

45.65

45.70

45.75

45.80

45.85

45.90

45.95

46.00

46.05

46.10

46.15

46.20

46.25

46.30

46.35

46.40

46.45

46.50

46.55

46.60

46.65

46.70

46.75

46.80

46.85

46.90

46.95

47.00

47.05

47.10

47.15

47.20

47.25

47.30

47.35

47.40

47.45

47.50

47.55

47.60

47.65

47.70

47.75

47.80

47.85

47.90

47.95

48.00

48.05

48.10

48.15

48.20

48.25

48.30

48.35

48.40

48.45

48.50

48.55

48.60

48.65

48.70

48.75

48.80

48.85

48.90

48.95

49.00

49.05

49.10

49.15

49.20

49.25

49.30

49.35

49.40

49.45

49.50

49.55

49.60

49.65

49.70

49.75

49.80

49.85

49.90

49.95

50.00

50.05

50.10

50.15

50.20

50.25

50.30

50.35

50.40

50.45

50.50

50.55

50.60

50.65

50.70

50.75

50.80

50.85

50.90

50.95

51.00

51.05

51.10

51.15

51.20

51.25

51.30

51.35

51.40

51.45

51.50

51.55

51.60

51.65

51.70

51.75

51.80

51.85

51.90

51.95

52.00

52.05

52.10

52.15

52.20

52.25

52.30

52.35

52.40

52.45

52.50

52.55

52.60

52.65

52.70

52.75

52.80

52.85

52.90

52.95

53.00

53.05

53.10

53.15

53.20

53.25

53.30

53.35

53.40

53.45

53.50

53.55

53.60

53.65

53.70

53.75

53.80

53.85

53.90

53.95

54.00

54.05

54.10

54.15

54.20

54.25

54.30

54.35

54.40

54.45

54.50

54.55

54.60

54.65

54.70

54.75

54.80

54.85

54.90

54.95

55.00

55.05

55.10

55.15

55.20

55.25

55.30

55.35

55.40

55.45

55.50

55.55

55.60

55.65

55.70

55.75

55.80

55.85

55.90

55.95

56.00

56.05

56.10

56.15

56.20

56.25

56.30

56.35

56.40

56.45

56.50

56.55

56.60

56.65

56.70

56.75

56.80

56.85

56.90

56.95

57.00

57.05

57.10

57.15

57.20

57.25

57.30

57.35

57.40

57.45

57.50

57.55

57.60

57.65

57.70

57.75

57.80

57.85

57.90

57.95

58.00

58.05

58.10

58.15

58.20

58.25

58.30

58.35

58.40

58.45

58.50

58.55

58.60

58.65

58.70

58.75

58.80

58.85

58.90

58.95

59.00

59.05

59.10

59.15

59.20

59.25

59.30

59.35

59.40

59.45

59.50

59.55

59.60

59.65

59.70

59.75

59.80

59.85

59.90

59.95

60.00

60.05

60.10

60.15

60.20

60.25

60.30

60.35

60.40

60.45

60.50

60.55

60.60

60.65

60.70

60.75

60.80

60.85

60.90

60.95

61.00

61.05

61.10

61.15

61.20

61.25

61.30

61.35

61.40

61.45

61.50

61.55

61.60

61.65

61.70

61.75

61.80

61.85

14 1/2' FROM APPROACH

SPAN "C"

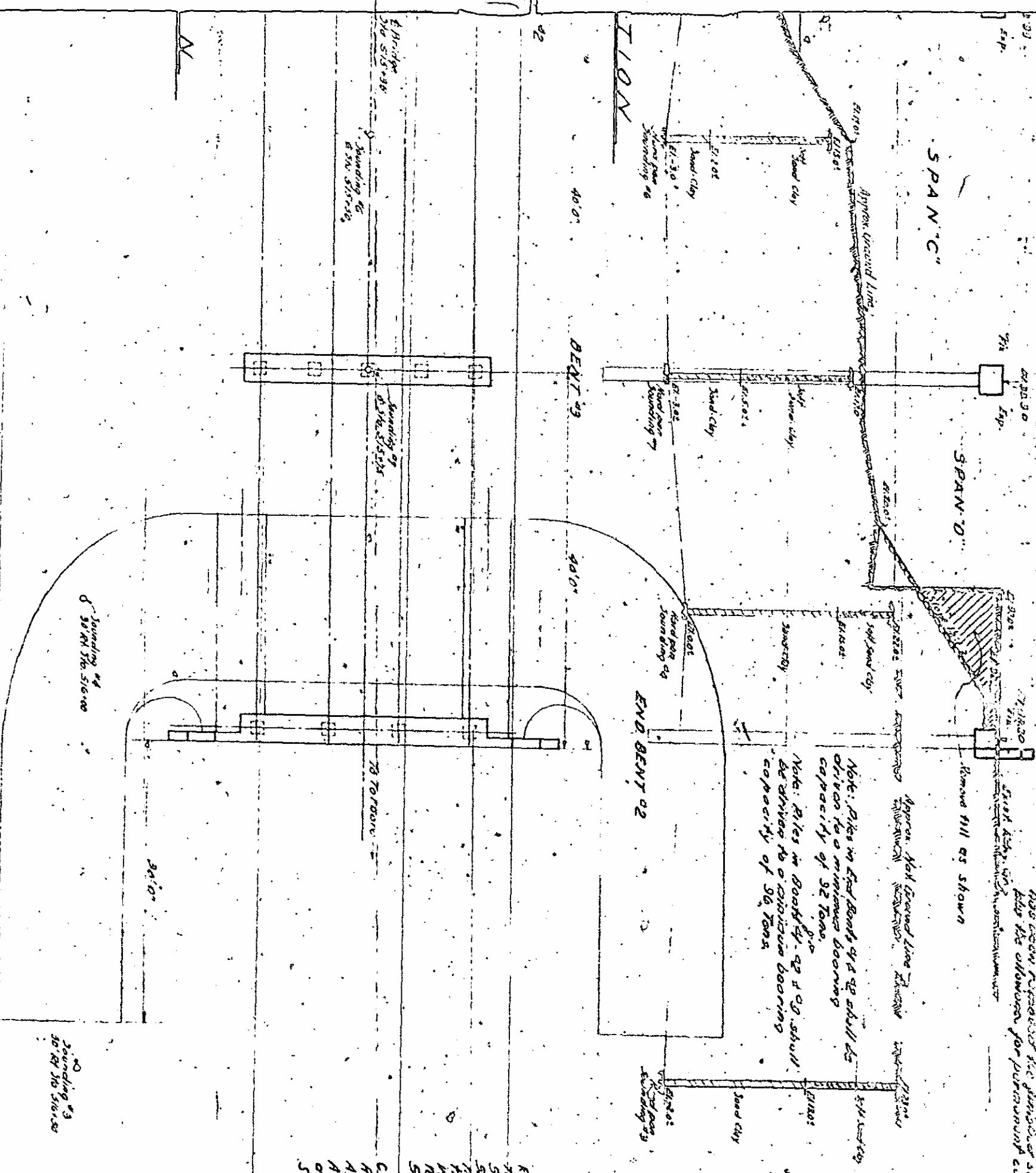
SPAN "D"

Remove fill as shown

Note: Piles in End Bents of 2' 0" shall be driven to a minimum bearing capacity of 92 Tons.

Note: Piles in Bents of 2' 0" shall be driven to a minimum bearing capacity of 90 Tons.

Approx. Max Ground Line Elevation



\* Square head piles not required.  
Round piles with 9" minimum dia tip  
may be used.

TOTAL BILL OF MATERIAL

B.N. Nail in Post, 1/2" dia, EN. 01 ST. 514.70, EN. 02 02

Description	Class of Concrete	Reinf. Steel	Plates & Bolts	Precast for Sp. Conc. Piles		Cast Piles Unloaded	Plain Rip Rap Class 2	Conc. Rip Rap	Misc. for Concrete Extension	Removal of Existing	Const. Main
				No.	L.S. Ft.						
Approach & curb	3" 1/4	22	1 lb.	2	1						
Superstructure	212.5	65162	850				150	125		130	
End Bent 1	10.5	1431		1	1						
Bent 1	1.2	1249		2	1.5						
Bent 2	1.2	1215		2	1.5						
Bent 3	7.9	1345		3	2.0		38.5	4.11			
End Bent 2	1.35	1461		1	1.15						
Precast Piles 4"		14534									
<b>TOTAL</b>	<b>200'</b>	<b>83666</b>	<b>950</b>	<b>23</b>	<b>850</b>	<b>1</b>	<b>535</b>	<b>630</b>	<b>220</b>	<b>Lump Sum</b>	<b>Lump Sum</b>

Scale  
1" = 10'

CO  
R4  
A7  
A  
ON  
51

Remove fill as shown

Approx. Nat Ground Line

Note: Piles in End Bents of 24 & 25 shall be driven to a minimum bearing capacity of 25 tons.

Note: Piles in Bents of 24 & 25 shall be driven to a minimum bearing capacity of 25 tons.

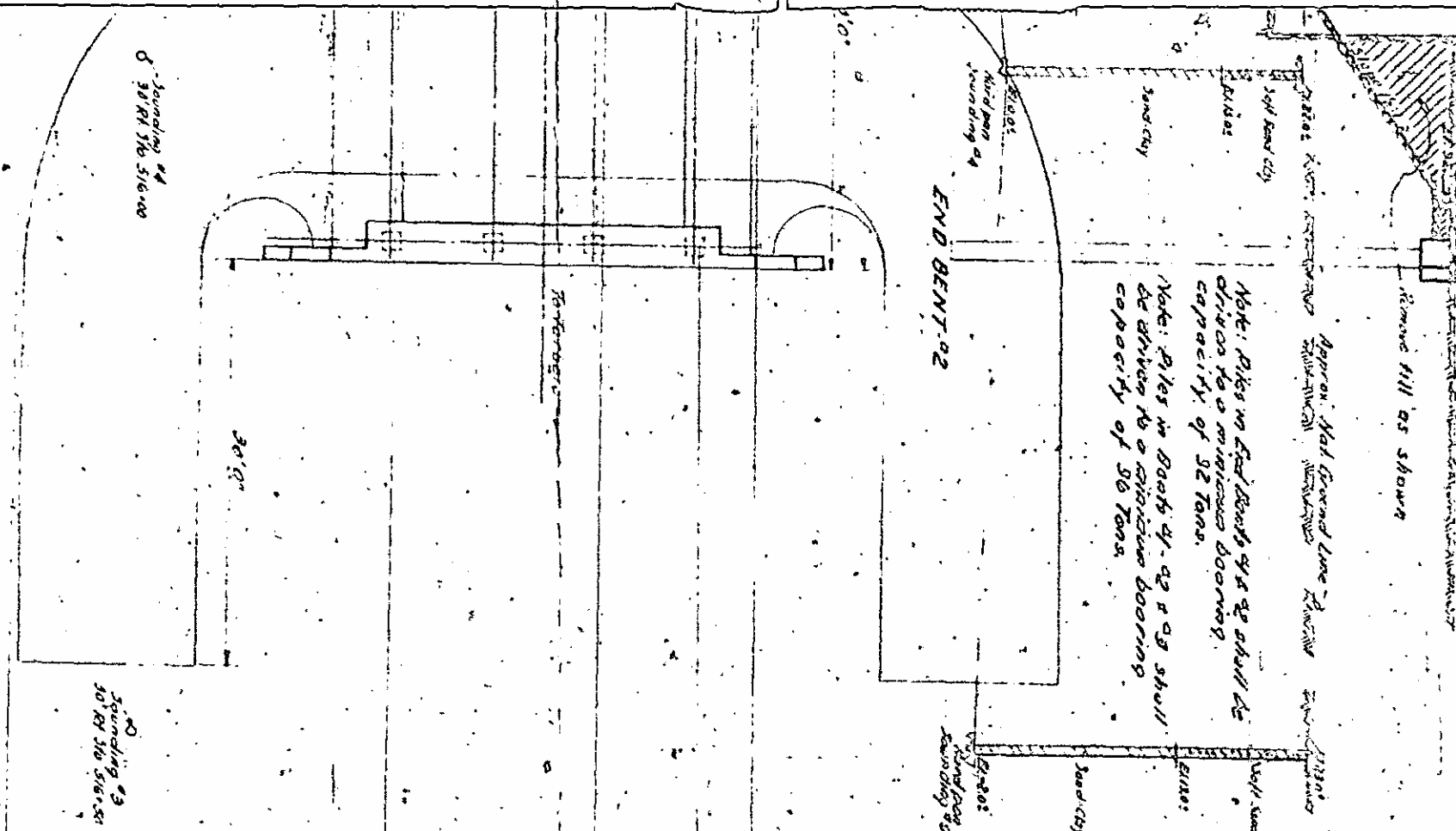
Note: All concrete except in handrails shall be composed by Rockwell's Workman.

Note: Concrete surfaces shall be finished in accordance with the specifications except the surface here shall be given a Class 2 surface finish.

EXPLANATION & FOUNDATION DATA: The foundation for the bridge is to be on piles driven to a minimum bearing capacity of 25 tons. The piles are to be driven to a minimum bearing capacity of 25 tons. The piles are to be driven to a minimum bearing capacity of 25 tons.

Note: For details of Rip Rap see Sheet No. 5-6.

Note: For details of Ground Note see Sheet No. 5-3.



REMOVAL OF EXISTING STRUCTURE AT STATION 515+35

REMOVAL OF A TEMPORARY CROSSING AT STA. 515+35.

A temporary crossing shall be provided and afterwards removed at STA. 515+35. See special provisions.

See Specifications.

PROJECT NO. 1243

LOGS COMBE COUNTY

STATION: 515+35

MATERIAL

Qts	Plain Rip Rap Class 3	Concr. Rip Rap	Excavation	Removal of Rip Rap	Const. Man.
150	30 Yds	30 Yds	6,100	Lump Sum	Lump Sum
185					
635					

STATE OF NORTH CAROLINA

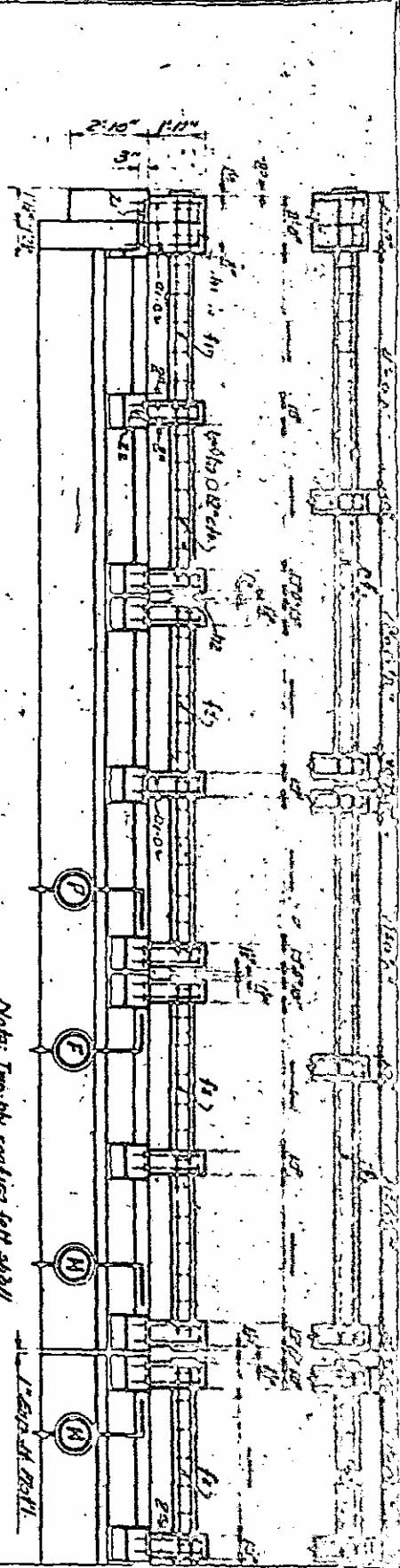
STATE HIGHWAY AND PUBLIC WORKS COMMISSION

GENERAL DRAWING

FOR BRIDGE OVER TOWN CREEK

APRIL 1948

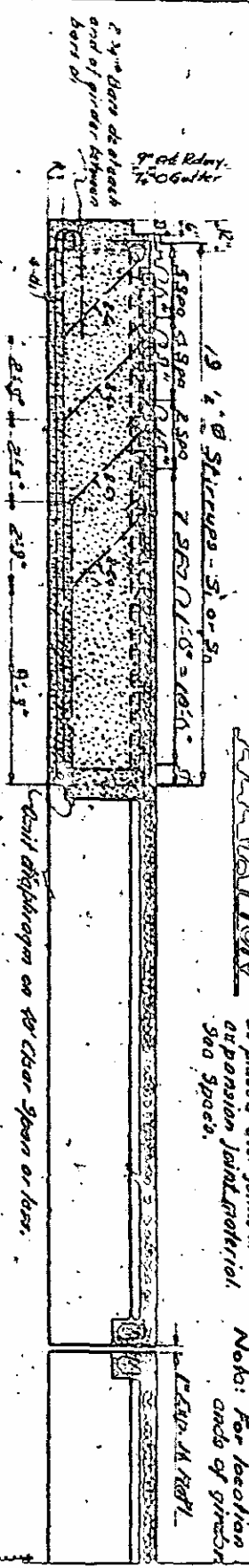
W. H. ...



**ELEVATION**

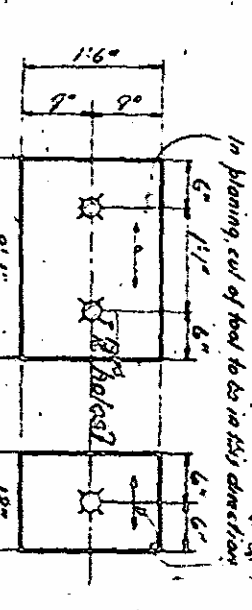
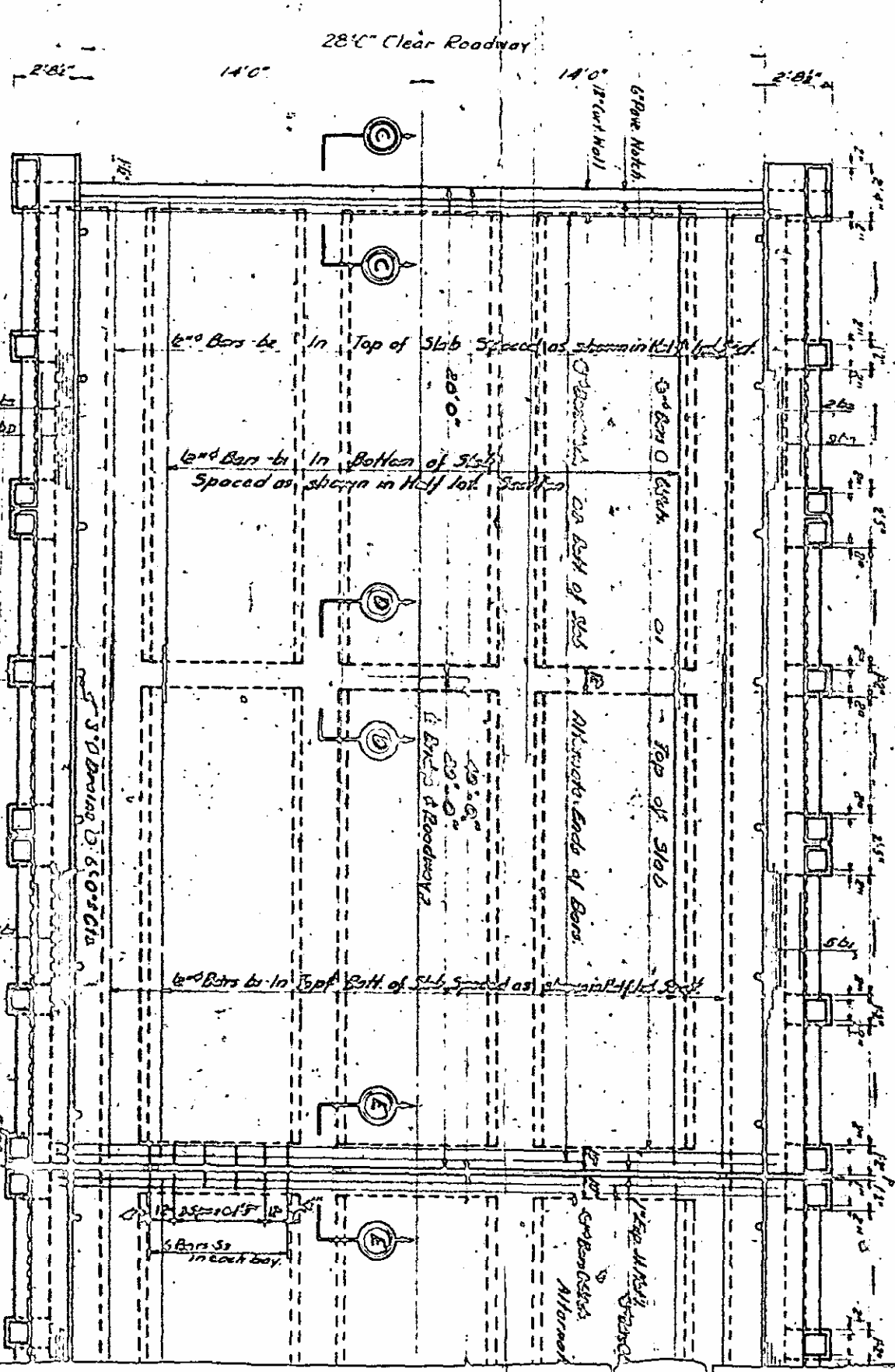
Note: Two ply roofing felt shall be placed over joints in expansion joint material. See Specs.

Note: For location ends of girder



**SECTION A-A**

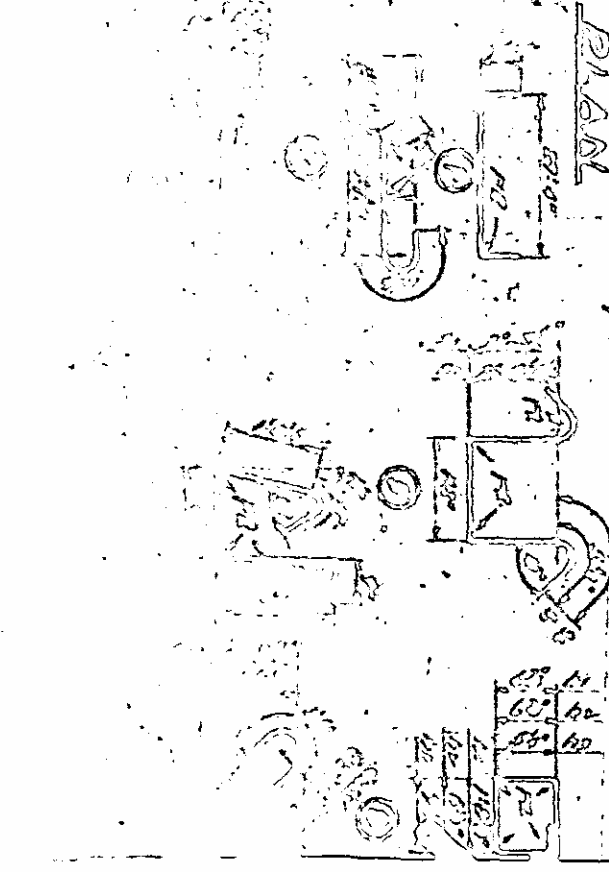
**SECTION A-A**



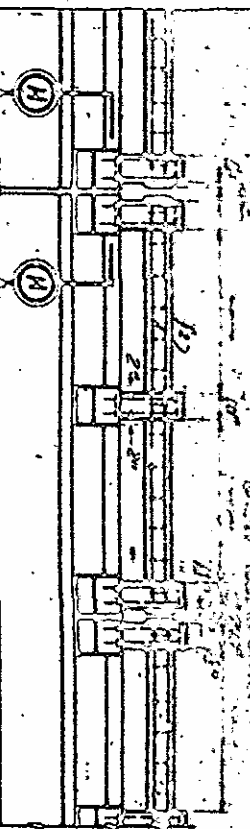
REQUIRED REINFORCING BARS

Required  
By  
S.D. B.M. M.

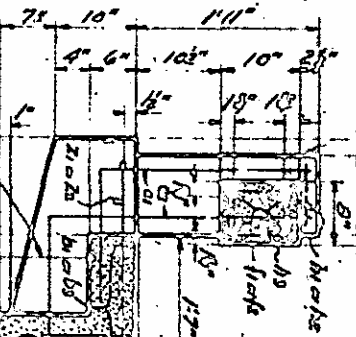
DETAILS



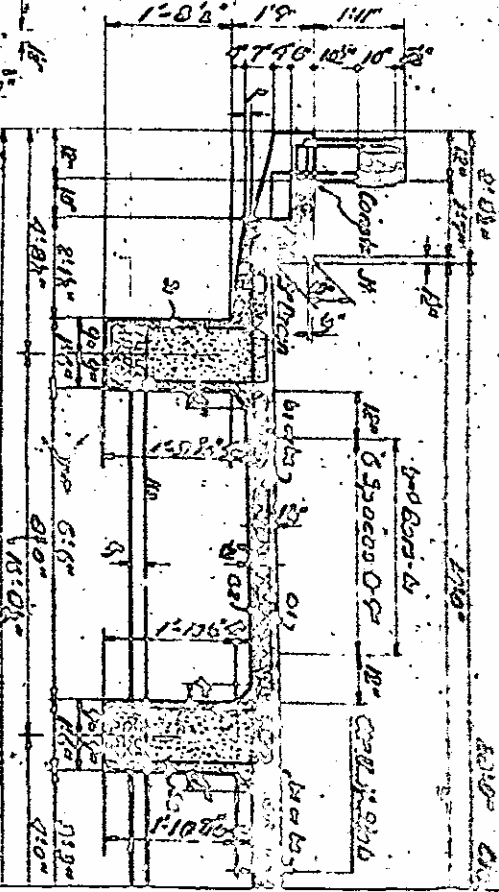
**PLAN**



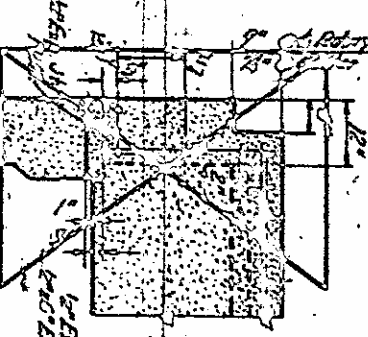
**GIRDER DETAIL**



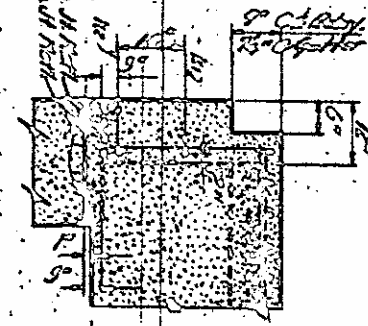
**DOWN DETAIL**



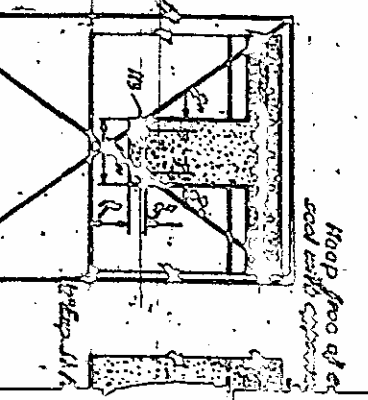
**SECTION THROUGH POST FOOTING**



**SECTION THROUGH COLUMN**



**SECTION THROUGH WALL**



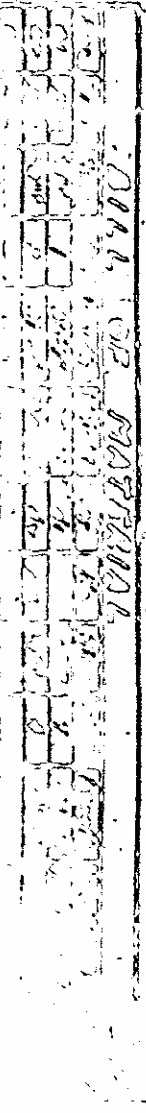
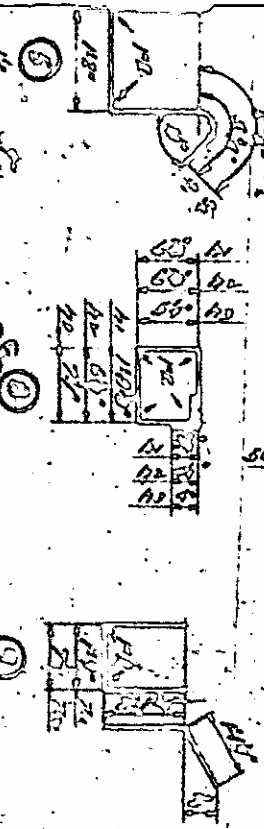
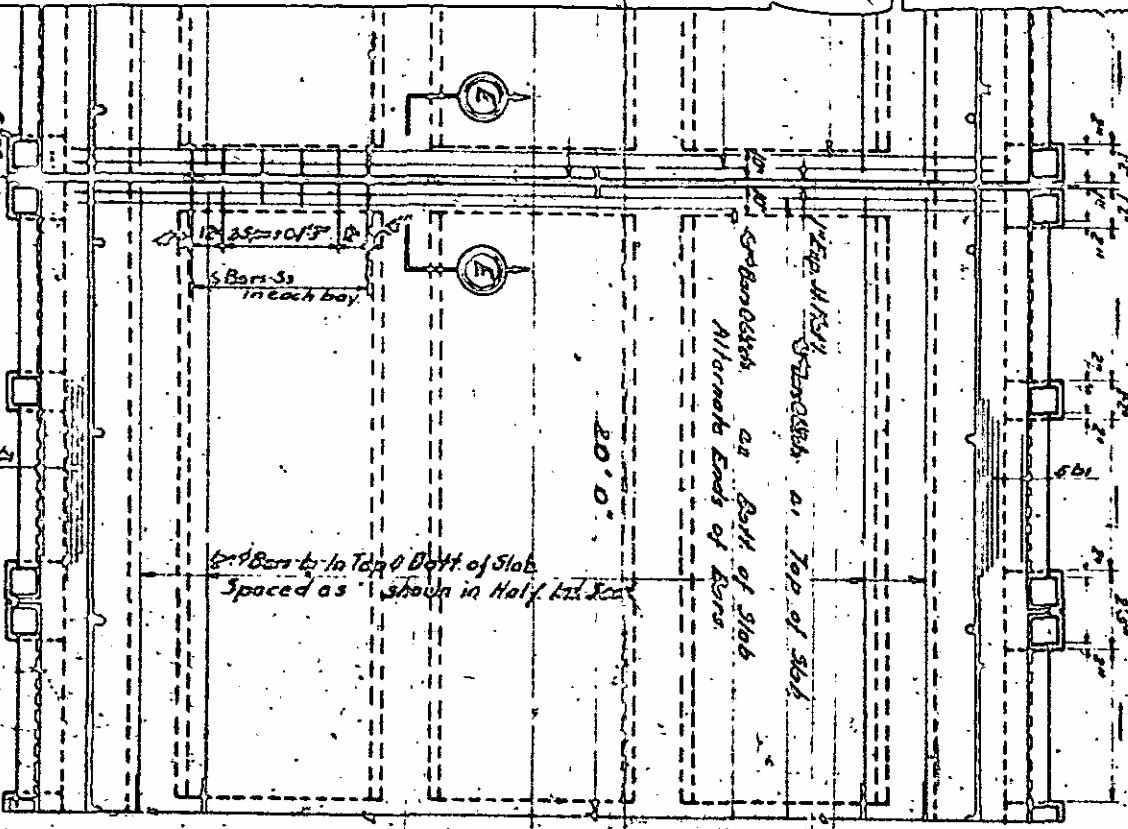
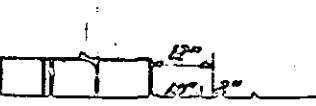
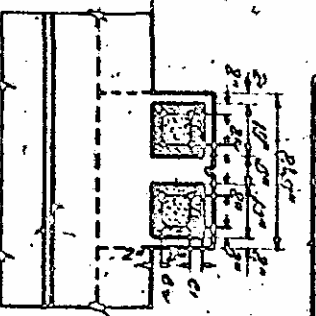
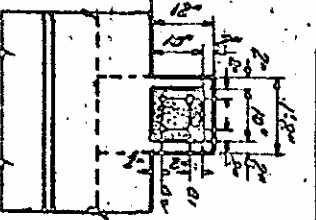
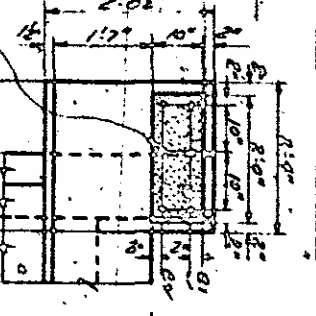
**WALL INTERIOR SECTION**



Notes: Cap on footing shall be cast in place. See Specifications. Floor slab in order to obtain length in to be selected. See Spool.

This bar to be shifted as necessary to other girder mass plate.

**RAIL POST DETAILS**



**RAIL POST MATERIAL**

1	2	3	4	5	6	7	8	9	10	11	12	13	14	15	16	17	18	19	20	21	22	23	24	25	26	27	28	29	30	31	32	33	34	35	36	37	38	39	40	41	42	43	44	45	46	47	48	49	50	51	52	53	54	55	56	57	58	59	60	61	62	63	64	65	66	67	68	69	70	71	72	73	74	75	76	77	78	79	80	81	82	83	84	85	86	87	88	89	90	91	92	93	94	95	96	97	98	99	100
---	---	---	---	---	---	---	---	---	----	----	----	----	----	----	----	----	----	----	----	----	----	----	----	----	----	----	----	----	----	----	----	----	----	----	----	----	----	----	----	----	----	----	----	----	----	----	----	----	----	----	----	----	----	----	----	----	----	----	----	----	----	----	----	----	----	----	----	----	----	----	----	----	----	----	----	----	----	----	----	----	----	----	----	----	----	----	----	----	----	----	----	----	----	----	----	----	----	----	-----



