

REFERENCE: BR-0014

PROJECT: 67014

CONTENTS

<u>SHEET NO.</u>	<u>DESCRIPTION</u>
1	TITLE SHEET
2	LEGEND (SOIL & ROCK)
3	SITE PLAN
4	PROFILE
5-7	BORE LOG(S)
8	SOIL TEST RESULTS
9	SITE PHOTOGRAPH(S)

STATE OF NORTH CAROLINA
DEPARTMENT OF TRANSPORTATION
DIVISION OF HIGHWAYS
GEOTECHNICAL ENGINEERING UNIT

STRUCTURE
SUBSURFACE INVESTIGATION

COUNTY CUMBERLAND
 PROJECT DESCRIPTION BRIDGE NO. 0025 ON -LREV-
NC 242 OVER BEAVER DAM CREEK AT
STA. 21+37

STATE	STATE PROJECT REFERENCE NO.	SHEET NO.	TOTAL SHEETS
N.C.	BR-0014	1	9

CAUTION NOTICE

THE SUBSURFACE INFORMATION AND THE SUBSURFACE INVESTIGATION ON WHICH IT IS BASED WERE MADE FOR THE PURPOSE OF STUDY, PLANNING AND DESIGN, AND NOT FOR CONSTRUCTION OR PAY PURPOSES. THE VARIOUS FIELD BORING LOGS, ROCK CORES AND SOIL TEST DATA AVAILABLE MAY BE REVIEWED OR INSPECTED IN RALEIGH BY CONTACTING THE N. C. DEPARTMENT OF TRANSPORTATION, GEOTECHNICAL ENGINEERING UNIT AT 1919 TOT-6850. THE SUBSURFACE PLANS AND REPORTS, FIELD BORING LOGS, ROCK CORES AND SOIL TEST DATA ARE NOT PART OF THE CONTRACT.

GENERAL SOIL AND ROCK STRATA DESCRIPTIONS AND INDICATED BOUNDARIES ARE BASED ON A GEOTECHNICAL INTERPRETATION OF ALL AVAILABLE SUBSURFACE DATA AND MAY NOT NECESSARILY REFLECT THE ACTUAL SUBSURFACE CONDITIONS BETWEEN BORINGS OR BETWEEN SAMPLED STRATA WITHIN THE BOREHOLE. THE LABORATORY SAMPLE DATA AND THE IN SITU (IN-PLACE) TEST DATA CAN BE RELIED ON ONLY TO THE DEGREE OF RELIABILITY INHERENT IN THE STANDARD TEST METHOD. THE OBSERVED WATER LEVELS OR SOIL MOISTURE CONDITIONS INDICATED IN THE SUBSURFACE INVESTIGATIONS ARE AS RECORDED AT THE TIME OF THE INVESTIGATION. THESE WATER LEVELS OR SOIL MOISTURE CONDITIONS MAY VARY CONSIDERABLY WITH TIME ACCORDING TO CLIMATIC CONDITIONS INCLUDING TEMPERATURES, PRECIPITATION AND WIND, AS WELL AS OTHER NON-CLIMATIC FACTORS.

THE BIDDER OR CONTRACTOR IS CAUTIONED THAT DETAILS SHOWN ON THE SUBSURFACE PLANS ARE PRELIMINARY ONLY AND IN MANY CASES THE FINAL DESIGN DETAILS ARE DIFFERENT. FOR BIDDING AND CONSTRUCTION PURPOSES, REFER TO THE CONSTRUCTION PLANS AND DOCUMENTS FOR FINAL DESIGN INFORMATION ON THIS PROJECT. THE DEPARTMENT DOES NOT WARRANT OR GUARANTEE THE SUFFICIENCY OR ACCURACY OF THE INVESTIGATION MADE, NOR THE INTERPRETATIONS MADE, OR OPINION OF THE DEPARTMENT AS TO THE TYPE OF MATERIALS AND CONDITIONS TO BE ENCOUNTERED. THE BIDDER OR CONTRACTOR IS CAUTIONED TO MAKE SUCH INDEPENDENT SUBSURFACE INVESTIGATIONS AS HE DEEMS NECESSARY TO SATISFY HIMSELF AS TO CONDITIONS TO BE ENCOUNTERED ON THE PROJECT. THE CONTRACTOR SHALL HAVE NO CLAIM FOR ADDITIONAL COMPENSATION OR FOR AN EXTENSION OF TIME FOR ANY REASON RESULTING FROM THE ACTUAL CONDITIONS ENCOUNTERED AT THE SITE DIFFERING FROM THOSE INDICATED IN THE SUBSURFACE INFORMATION.

- NOTES:
1. THE INFORMATION CONTAINED HEREIN IS NOT IMPLIED OR GUARANTEED BY THE N. C. DEPARTMENT OF TRANSPORTATION AS ACCURATE NOR IS IT CONSIDERED PART OF THE PLANS, SPECIFICATIONS OR CONTRACT FOR THE PROJECT.
 2. BY HAVING REQUESTED THIS INFORMATION, THE CONTRACTOR SPECIFICALLY WAIVES ANY CLAIMS FOR INCREASED COMPENSATION OR EXTENSION OF TIME BASED ON DIFFERENCES BETWEEN THE CONDITIONS INDICATED HEREIN AND THE ACTUAL CONDITIONS AT THE PROJECT SITE.

PERSONNEL

A. N. KINTNER
D. G. PINTER
R. E. CLARKE
R. E. SMITH

INVESTIGATED BY J. L. LOVE
 DRAWN BY A. N. KINTNER
 CHECKED BY N. T. ROBERSON
 SUBMITTED BY N. T. ROBERSON
 DATE JANUARY 2019



DocuSigned by:
Jaime L. Love 4/5/2019
 B93571039B884B5...
 SIGNATURE DATE

**DOCUMENT NOT CONSIDERED FINAL
 UNLESS ALL SIGNATURES COMPLETED**

NORTH CAROLINA DEPARTMENT OF TRANSPORTATION
DIVISION OF HIGHWAYS
GEOTECHNICAL ENGINEERING UNIT
SUBSURFACE INVESTIGATION
SOIL AND ROCK LEGEND, TERMS, SYMBOLS, AND ABBREVIATIONS

SOIL DESCRIPTION

SOIL IS CONSIDERED UNCONSOLIDATED, SEMI-CONSOLIDATED, OR WEATHERED EARTH MATERIALS THAT CAN BE PENETRATED WITH A CONTINUOUS FLIGHT POWER AUGER AND YIELD LESS THAN 100 BLOWS PER FOOT ACCORDING TO THE STANDARD PENETRATION TEST (AASHTO T 209, ASTM D1586). SOIL CLASSIFICATION IS BASED ON THE AASHTO SYSTEM. BASIC DESCRIPTIONS GENERALLY INCLUDE THE FOLLOWING: CONSISTENCY, COLOR, TEXTURE, MOISTURE, AASHTO CLASSIFICATION, AND OTHER PERTINENT FACTORS SUCH AS MINERALOGICAL COMPOSITION, ANGULARITY, STRUCTURE, PLASTICITY, ETC. FOR EXAMPLE, VERY STIFF, GRAY, SILTY CLAY, MOIST WITH INTERBEDDED FINE SAND LAYERS, HIGHLY PLASTIC, A-7-6

SOIL LEGEND AND AASHTO CLASSIFICATION

GENERAL CLASS.	GRANULAR MATERIALS (≤ 35% PASSING #200)						SILT-CLAY MATERIALS (> 35% PASSING #200)						ORGANIC MATERIALS				
	A-1	A-3	A-2	A-4	A-5	A-7	A-1, A-2	A-4, A-5	A-6, A-7	A-1, A-2	A-4, A-5	A-6, A-7	A-1, A-2	A-4, A-5	A-6, A-7		
GROUP CLASS.	A-1-a	A-1-b	A-2-4	A-2-5	A-2-6	A-2-7	A-7-5	A-7-6	A-3	A-3	A-3	A-3	A-3	A-3	A-3		
SYMBOL																	
% PASSING #10 #40 #200	50 MX 30 MX 15 MX	50 MX 25 MX 10 MX	51 MN 35 MX 35 MX	35 MX 35 MX 35 MX	35 MX 35 MX 35 MX	36 MN 36 MN 36 MN	36 MN 36 MN 36 MN	36 MN 36 MN 36 MN	GRANULAR SOILS	SILT-CLAY SOILS	MUCK, PEAT						
MATERIAL PASSING #40 LL PI	- 6 MX	- NP	40 MX 41 MN 10 MX 11 MN	40 MX 41 MN 10 MX 11 MN	40 MX 41 MN 10 MX 11 MN	40 MX 41 MN 10 MX 11 MN	40 MX 41 MN 10 MX 11 MN	40 MX 41 MN 10 MX 11 MN	SOILS WITH LITTLE OR MODERATE AMOUNTS OF ORGANIC MATTER	HIGHLY ORGANIC SOILS							
GROUP INDEX	0	0	0	4 MX	8 MX	12 MX	16 MX	NO MX									
USUAL TYPES OF MAJOR MATERIALS	STONE FRAGS. GRAVEL, AND SAND	FINE SAND	SILTY OR CLAYEY GRAVEL AND SAND	SILTY SOILS	CLAYEY SOILS												
GEN. RATING AS SUBGRADE	EXCELLENT TO GOOD			FAIR TO POOR			FAIR TO POOR	POOR	UNSUITABLE								
	PI OF A-7-5 SUBGROUP IS ≤ LL - 30 ; PI OF A-7-6 SUBGROUP IS > LL - 30																

CONSISTENCY OR DENSENESS

PRIMARY SOIL TYPE	COMPACTNESS OR CONSISTENCY	RANGE OF STANDARD PENETRATION RESISTANCE (N-VALUE)	RANGE OF UNCONFINED COMPRESSIVE STRENGTH (TONS/FT ²)
GENERALLY GRANULAR MATERIAL (NON-COHESIVE)	VERY LOOSE LOOSE MEDIUM DENSE DENSE VERY DENSE	< 4 4 TO 10 10 TO 30 30 TO 50 > 50	N/A
GENERALLY SILT-CLAY MATERIAL (COHESIVE)	VERY SOFT SOFT MEDIUM STIFF STIFF VERY STIFF HARD	< 2 2 TO 4 4 TO 8 8 TO 15 15 TO 30 > 30	< 0.25 0.25 TO 0.5 0.5 TO 1.0 1 TO 2 2 TO 4 > 4

TEXTURE OR GRAIN SIZE

U.S. STD. SIEVE SIZE OPENING (MM)	4	10	40	60	200	270
	4.76	2.00	0.42	0.25	0.075	0.053
BOULDER (BLDR.)						
COBBLE (COB.)						
GRAVEL (GR.)						
COARSE SAND (CSE, SD.)						
FINE SAND (F SD.)						
SILT (SL.)						
CLAY (CL.)						
GRAIN SIZE	305	75	2.0	0.25	0.05	0.005
MM						
IN.	12	3				

SOIL MOISTURE - CORRELATION OF TERMS

SOIL MOISTURE SCALE (ATTERBERG LIMITS)	FIELD MOISTURE DESCRIPTION	GUIDE FOR FIELD MOISTURE DESCRIPTION
LL - LIQUID LIMIT	- SATURATED - (SAT.)	USUALLY LIQUID; VERY WET, USUALLY FROM BELOW THE GROUND WATER TABLE
PL - PLASTIC LIMIT	- WET - (W)	SEMISOLID; REQUIRES DRYING TO ATTAIN OPTIMUM MOISTURE
OM - OPTIMUM MOISTURE SHRINKAGE LIMIT	- MOIST - (M)	SOLID; AT OR NEAR OPTIMUM MOISTURE
SL - SHRINKAGE LIMIT	- DRY - (D)	REQUIRES ADDITIONAL WATER TO ATTAIN OPTIMUM MOISTURE

PLASTICITY

	PLASTICITY INDEX (PI)	DRY STRENGTH
NON PLASTIC	0-5	VERY LOW
SLIGHTLY PLASTIC	6-15	SLIGHT
MODERATELY PLASTIC	16-25	MEDIUM
HIGHLY PLASTIC	26 OR MORE	HIGH

COLOR

DESCRIPTIONS MAY INCLUDE COLOR OR COLOR COMBINATIONS (TAN, RED, YELLOW-BROWN, BLUE-GRAY). MODIFIERS SUCH AS LIGHT, DARK, STREAKED, ETC. ARE USED TO DESCRIBE APPEARANCE.

GRADATION

WELL GRADED - INDICATES A GOOD REPRESENTATION OF PARTICLE SIZES FROM FINE TO COARSE.
UNIFORMLY GRADED - INDICATES THAT SOIL PARTICLES ARE ALL APPROXIMATELY THE SAME SIZE.
GAP-GRADED - INDICATES A MIXTURE OF UNIFORM PARTICLE SIZES OF TWO OR MORE SIZES.

ANGULARITY OF GRAINS

THE ANGULARITY OR ROUNDNESS OF SOIL GRAINS IS DESIGNATED BY THE TERMS: ANGULAR, SUBANGULAR, SUBROUNDED, OR ROUNDED.

MINERALOGICAL COMPOSITION

MINERAL NAMES SUCH AS QUARTZ, FELDSPAR, MICA, TALC, KAOLIN, ETC. ARE USED IN DESCRIPTIONS WHEN THEY ARE CONSIDERED OF SIGNIFICANCE.

COMPRESSIBILITY

SLIGHTLY COMPRESSIBLE LL < 31
MODERATELY COMPRESSIBLE LL = 31 - 50
HIGHLY COMPRESSIBLE LL > 50

PERCENTAGE OF MATERIAL

	GRANULAR SOILS	SILT - CLAY SOILS	OTHER MATERIAL
TRACE OF ORGANIC MATTER	2 - 3%	3 - 5%	TRACE 1 - 10%
LITTLE ORGANIC MATTER	3 - 5%	5 - 12%	LITTLE 10 - 20%
MODERATELY ORGANIC	5 - 10%	12 - 20%	SOME 20 - 35%
HIGHLY ORGANIC	> 10%	> 20%	HIGHLY 35% AND ABOVE

GROUND WATER

- WATER LEVEL IN BORE HOLE IMMEDIATELY AFTER DRILLING
- STATIC WATER LEVEL AFTER 24 HOURS
- PERCHED WATER, SATURATED ZONE, OR WATER BEARING STRATA
- SPRING OR SEEP

MISCELLANEOUS SYMBOLS

- ROADWAY EMBANKMENT (RE) WITH SOIL DESCRIPTION
- SOIL SYMBOL
- ARTIFICIAL FILL (AF) OTHER THAN ROADWAY EMBANKMENT
- INFERRED SOIL BOUNDARY
- INFERRED ROCK LINE
- ALLUVIAL SOIL BOUNDARY
- DIP & DIP DIRECTION OF ROCK STRUCTURES
- TEST BORING
- SLOPE INDICATOR INSTALLATION
- CONE PENETROMETER TEST
- SOUNDING ROD
- TEST BORING WITH CORE
- SPT N-VALUE

RECOMMENDATION SYMBOLS

- UNDERCUT
- UNCLASSIFIED EXCAVATION - UNSUITABLE WASTE
- UNCLASSIFIED EXCAVATION - ACCEPTABLE DEGRADABLE ROCK
- SHALLOW UNDERCUT
- UNCLASSIFIED EXCAVATION - ACCEPTABLE, BUT NOT TO BE USED IN THE TOP 3 FEET OF EMBANKMENT OR BACKFILL

ABBREVIATIONS

- AR - AUGER REFUSAL
- BT - BORING TERMINATED
- CL - CLAY
- CPT - CONE PENETRATION TEST
- CSE - COARSE
- DMT - DILATOMETER TEST
- DPT - DYNAMIC PENETRATION TEST
- e - VOID RATIO
- F - FINE
- FOSS. - FOSSILIFEROUS
- FRAC. - FRACTURED, FRACTURES
- FRAGS. - FRAGMENTS
- HI. - HIGHLY
- MED. - MEDIUM
- MICA - MICACEOUS
- MOD. - MODERATELY
- NP - NON PLASTIC
- ORG. - ORGANIC
- PMT - PRESSUREMETER TEST
- SAP. - SAPROLITIC
- SD. - SAND, SANDY
- SL. - SILTY, SILTY
- SLI. - SLIGHTLY
- TCR - TRICONE REFUSAL
- w - MOISTURE CONTENT
- V - VERY
- VST - VANE SHEAR TEST
- WEA. - WEATHERED
- γ - UNIT WEIGHT
- γ_d - DRY UNIT WEIGHT
- S - BULK
- SS - SPLIT SPOON
- ST - SHELBY TUBE
- RS - ROCK
- RT - RECOMPACTED TRIAXIAL
- CBR - CALIFORNIA BEARING RATIO

EQUIPMENT USED ON SUBJECT PROJECT

- DRILL UNITS:
 - CME-45C
 - CME-55
 - CME-550
 - VANE SHEAR TEST
 - PORTABLE HOIST
- ADVANCING TOOLS:
 - CLAY BITS
 - 6" CONTINUOUS FLIGHT AUGER
 - 8" HOLLOW AUGERS
 - HARD FACED FINGER BITS
 - TUNG-CARBIDE INSERTS
 - CASING w/ ADVANCER
 - TRICONE STEEL TEETH
 - TRICONE TUNG-CARB.
 - CORE BIT
- HAMMER TYPE:
 - AUTOMATIC MANUAL
- CORE SIZE:
 - B
 - H
 - N
- HAND TOOLS:
 - POST HOLE DIGGER
 - HAND AUGER
 - SOUNDING ROD
 - VANE SHEAR TEST

ROCK DESCRIPTION

HARD ROCK IS NON-COASTAL PLAIN MATERIAL THAT WOULD YIELD SPT REFUSAL IF TESTED, AN INFERRED ROCK LINE INDICATES THE LEVEL AT WHICH NON-COASTAL PLAIN MATERIAL WOULD YIELD SPT REFUSAL. SPT REFUSAL IS PENETRATION BY A SPLIT SPOON SAMPLER EQUAL TO OR LESS THAN 0.1 FOOT PER 60 BLOWS IN NON-COASTAL PLAIN MATERIAL. THE TRANSITION BETWEEN SOIL AND ROCK IS OFTEN REPRESENTED BY A ZONE OF WEATHERED ROCK. ROCK MATERIALS ARE TYPICALLY DIVIDED AS FOLLOWS:

WEATHERED ROCK (WR) NON-COASTAL PLAIN MATERIAL THAT WOULD YIELD SPT N VALUES > 100 BLOWS PER FOOT IF TESTED.

CRYSTALLINE ROCK (CR) FINE TO COARSE GRAIN IGNEOUS AND METAMORPHIC ROCK THAT WOULD YIELD SPT REFUSAL IF TESTED. ROCK TYPE INCLUDES GRANITE, GNEISS, GABBRO, SCHIST, ETC.

NON-CRYSTALLINE ROCK (NCR) FINE TO COARSE GRAIN METAMORPHIC AND NON-COASTAL PLAIN SEDIMENTARY ROCK THAT WOULD YIELD SPT REFUSAL IF TESTED. ROCK TYPE INCLUDES PHYLLITE, SLATE, SANDSTONE, ETC.

COASTAL PLAIN SEDIMENTARY ROCK (CP) COASTAL PLAIN SEDIMENTS CEMENTED INTO ROCK, BUT MAY NOT YIELD SPT REFUSAL. ROCK TYPE INCLUDES LIMESTONE, SANDSTONE, CEMENTED SHELL BEDS, ETC.

WEATHERING

- FRESH: ROCK FRESH, CRYSTALS BRIGHT, FEW JOINTS MAY SHOW SLIGHT STAINING. ROCK RINGS UNDER HAMMER IF CRYSTALLINE.
- VERY SLIGHT (V SL.): ROCK GENERALLY FRESH, JOINTS STAINED, SOME JOINTS MAY SHOW THIN CLAY COATINGS IF OPEN. CRYSTALS ON A BROKEN SPECIMEN FACE SHINE BRIGHTLY. ROCK RINGS UNDER HAMMER BLOWS IF OF A CRYSTALLINE NATURE.
- SLIGHT (SL.): ROCK GENERALLY FRESH, JOINTS STAINED AND DISCOLORATION EXTENDS INTO ROCK UP TO 1 INCH. OPEN JOINTS MAY CONTAIN CLAY. IN GRANITOID ROCKS SOME OCCASIONAL FELDSPAR CRYSTALS ARE DULL AND DISCOLORED. CRYSTALLINE ROCKS RING UNDER HAMMER BLOWS.
- MODERATE (MOD.): SIGNIFICANT PORTIONS OF ROCK SHOW DISCOLORATION AND WEATHERING EFFECTS. IN GRANITOID ROCKS, MOST FELDSPARS ARE DULL AND DISCOLORED, SOME SHOW CLAY. ROCK HAS DULL SOUND UNDER HAMMER BLOWS AND SHOWS SIGNIFICANT LOSS OF STRENGTH AS COMPARED WITH FRESH ROCK.
- MODERATELY SEVERE (MOD. SEV.): ALL ROCK EXCEPT QUARTZ DISCOLORED OR STAINED. IN GRANITOID ROCKS, ALL FELDSPARS DULL AND DISCOLORED AND A MAJORITY SHOW KAOLINIZATION. ROCK SHOWS SEVERE LOSS OF STRENGTH AND CAN BE EXCAVATED WITH A GEOLOGIST'S PICK. ROCK GIVES "CLUNK" SOUND WHEN STRUCK. IF TESTED, WOULD YIELD SPT REFUSAL.
- SEVERE (SEV.): ALL ROCK EXCEPT QUARTZ DISCOLORED OR STAINED. ROCK FABRIC CLEAR AND EVIDENT BUT REDUCED IN STRENGTH TO STRONG SOIL. IN GRANITOID ROCKS ALL FELDSPARS ARE KAOLINIZED TO SOME EXTENT. SOME FRAGMENTS OF STRONG ROCK USUALLY REMAIN. IF TESTED, WOULD YIELD SPT N VALUES > 100 BPF.
- VERY SEVERE (V SEV.): ALL ROCK EXCEPT QUARTZ DISCOLORED OR STAINED. ROCK FABRIC ELEMENTS ARE DISCERNIBLE BUT MASS IS EFFECTIVELY REDUCED TO SOIL STATUS, WITH ONLY FRAGMENTS OF STRONG ROCK REMAINING. SAPROLITE IS AN EXAMPLE OF ROCK WEATHERED TO A DEGREE THAT ONLY MINOR VESTIGES OF ORIGINAL ROCK FABRIC REMAIN. IF TESTED, WOULD YIELD SPT N VALUES < 100 BPF.
- COMPLETE: ROCK REDUCED TO SOIL. ROCK FABRIC NOT DISCERNIBLE, OR DISCERNIBLE ONLY IN SMALL AND SCATTERED CONCENTRATIONS. QUARTZ MAY BE PRESENT AS DIKES OR STRINGERS. SAPROLITE IS ALSO AN EXAMPLE.

ROCK HARDNESS

- VERY HARD: CANNOT BE SCRATCHED BY KNIFE OR SHARP PICK. BREAKING OF HAND SPECIMENS REQUIRES SEVERAL HARD BLOWS OF THE GEOLOGIST'S PICK.
- HARD: CAN BE SCRATCHED BY KNIFE OR PICK ONLY WITH DIFFICULTY. HARD HAMMER BLOWS REQUIRED TO DETACH HAND SPECIMEN.
- MODERATELY HARD: CAN BE SCRATCHED BY KNIFE OR PICK. GOUGES OR GROOVES TO 0.25 INCHES DEEP CAN BE EXCAVATED BY HARD BLOW OF A GEOLOGIST'S PICK. HAND SPECIMENS CAN BE DETACHED BY MODERATE BLOWS.
- MEDIUM HARD: CAN BE GROOVED OR GOUGED 0.05 INCHES DEEP BY FIRM PRESSURE OF KNIFE OR PICK POINT. CAN BE EXCAVATED IN SMALL CHIPS TO PIECES 1 INCH MAXIMUM SIZE BY HARD BLOWS OF THE POINT OF A GEOLOGIST'S PICK.
- SOFT: CAN BE GROOVED OR GOUGED READILY BY KNIFE OR PICK. CAN BE EXCAVATED IN FRAGMENTS FROM CHIPS TO SEVERAL INCHES IN SIZE BY MODERATE BLOWS OF A PICK POINT. SMALL, THIN PIECES CAN BE BROKEN BY FINGER PRESSURE.
- VERY SOFT: CAN BE CARVED WITH KNIFE. CAN BE EXCAVATED READILY WITH POINT OF PICK. PIECES 1 INCH OR MORE IN THICKNESS CAN BE BROKEN BY FINGER PRESSURE. CAN BE SCRATCHED READILY BY FINGERNAIL.

FRACTURE SPACING

TERM	SPACING	TERM	THICKNESS
VERY WIDE	MORE THAN 10 FEET	VERY THICKLY BEDDED	4 FEET
WIDE	3 TO 10 FEET	THICKLY BEDDED	1.5 - 4 FEET
MODERATELY CLOSE	1 TO 3 FEET	THINLY BEDDED	0.16 - 1.5 FEET
CLOSE	0.16 TO 1 FOOT	VERY THINLY BEDDED	0.03 - 0.16 FEET
VERY CLOSE	LESS THAN 0.16 FEET	THICKLY LAMINATED	0.008 - 0.03 FEET
		THINLY LAMINATED	< 0.008 FEET

INDURATION

- FOR SEDIMENTARY ROCKS, INDURATION IS THE HARDENING OF MATERIAL BY CEMENTING, HEAT, PRESSURE, ETC.
- FRIABLE: RUBBING WITH FINGER FREES NUMEROUS GRAINS; GENTLE BLOW BY HAMMER DISINTEGRATES SAMPLE.
- MODERATELY INDURATED: GRAINS CAN BE SEPARATED FROM SAMPLE WITH STEEL PROBE; BREAKS EASILY WHEN HIT WITH HAMMER.
- INDURATED: GRAINS ARE DIFFICULT TO SEPARATE WITH STEEL PROBE; DIFFICULT TO BREAK WITH HAMMER.
- EXTREMELY INDURATED: SHARP HAMMER BLOWS REQUIRED TO BREAK SAMPLE; SAMPLE BREAKS ACROSS GRAINS.

TERMS AND DEFINITIONS

- ALLUVIUM (ALLUV.): SOILS THAT HAVE BEEN TRANSPORTED BY WATER.
- AQUIFER - A WATER BEARING FORMATION OR STRATA.
- ARENACEOUS - APPLIED TO ROCKS THAT HAVE BEEN DERIVED FROM SAND OR THAT CONTAIN SAND.
- ARGILLACEOUS - APPLIED TO ALL ROCKS OR SUBSTANCES COMPOSED OF CLAY MINERALS, OR HAVING A NOTABLE PROPORTION OF CLAY IN THEIR COMPOSITION, SUCH AS SHALE, SLATE, ETC.
- ARTESIAN - GROUND WATER THAT IS UNDER SUFFICIENT PRESSURE TO RISE ABOVE THE LEVEL AT WHICH IT IS ENCOUNTERED, BUT WHICH DOES NOT NECESSARILY RISE TO OR ABOVE THE GROUND SURFACE.
- CALCAREOUS (CALC.) - SOILS THAT CONTAIN APPRECIABLE AMOUNTS OF CALCIUM CARBONATE.
- COLLUVIUM - ROCK FRAGMENTS MIXED WITH SOIL DEPOSITED BY GRAVITY ON SLOPE OR AT BOTTOM OF SLOPE.
- CORE RECOVERY (REC.) - TOTAL LENGTH OF ALL MATERIAL RECOVERED IN THE CORE BARREL DIVIDED BY TOTAL LENGTH OF CORE RUN AND EXPRESSED AS A PERCENTAGE.
- DIKE - A TABULAR BODY OF IGNEOUS ROCK THAT CUTS ACROSS THE STRUCTURE OF ADJACENT ROCKS OR CUTS MASSIVE ROCK.
- DIP - THE ANGLE AT WHICH A STRATUM OR ANY PLANAR FEATURE IS INCLINED FROM THE HORIZONTAL.
- DIP DIRECTION (DIP AZIMUTH) - THE DIRECTION OR BEARING OF THE HORIZONTAL TRACE OF THE LINE OF DIP, MEASURED CLOCKWISE FROM NORTH.
- FAULT - A FRACTURE OR FRACTURE ZONE ALONG WHICH THERE HAS BEEN DISPLACEMENT OF THE SIDES RELATIVE TO ONE ANOTHER PARALLEL TO THE FRACTURE.
- FISSILE - A PROPERTY OF SPLITTING ALONG CLOSELY SPACED PARALLEL PLANES.
- FLOAT - ROCK FRAGMENTS ON SURFACE NEAR THEIR ORIGINAL POSITION AND DISLOGGED FROM PARENT MATERIAL.
- FLOOD PLAIN (FP) - LAND BORDERING A STREAM, BUILT OF SEDIMENTS DEPOSITED BY THE STREAM.
- FORMATION (FM) - A MAPPABLE GEOLOGIC UNIT THAT CAN BE RECOGNIZED AND TRACED IN THE FIELD.
- JOINT - FRACTURE IN ROCK ALONG WHICH NO APPRECIABLE MOVEMENT HAS OCCURRED.
- LEDGE - A SHELF-LIKE RIDGE OR PROJECTION OF ROCK WHOSE THICKNESS IS SMALL COMPARED TO ITS LATERAL EXTENT.
- LENS - A BODY OF SOIL OR ROCK THAT THINS OUT IN ONE OR MORE DIRECTIONS.
- MOTTLED (MOT.) - IRREGULARLY MARKED WITH SPOTS OF DIFFERENT COLORS. MOTTLING IN SOILS USUALLY INDICATES POOR AERATION AND LACK OF GOOD DRAINAGE.
- PERCHED WATER - WATER MAINTAINED ABOVE THE NORMAL GROUND WATER LEVEL BY THE PRESENCE OF AN INTERVENING IMPERVIOUS STRATUM.
- RESIDUAL (RES.) SOIL - SOIL FORMED IN PLACE BY THE WEATHERING OF ROCK.
- ROCK QUALITY DESIGNATION (ROD) - A MEASURE OF ROCK QUALITY DESCRIBED BY TOTAL LENGTH OF ROCK SEGMENTS EQUAL TO OR GREATER THAN 4 INCHES DIVIDED BY THE TOTAL LENGTH OF CORE RUN AND EXPRESSED AS A PERCENTAGE.
- SAPROLITE (SAP.) - RESIDUAL SOIL THAT RETAINS THE RELIC STRUCTURE OR FABRIC OF THE PARENT ROCK.
- SILL - AN INTRUSIVE BODY OF IGNEOUS ROCK OF APPROXIMATELY UNIFORM THICKNESS AND RELATIVELY THIN COMPARED WITH ITS LATERAL EXTENT, THAT HAS BEEN EMPLACED PARALLEL TO THE BEDDING OR SCHISTOSITY OF THE INTRUDED ROCKS.
- SLICKENSIDE - POLISHED AND STRIATED SURFACE THAT RESULTS FROM FRICTION ALONG A FAULT OR SLIP PLANE.
- STANDARD PENETRATION TEST (PENETRATION RESISTANCE) (SPT) - NUMBER OF BLOWS (N OR BPF) OF A 140 LB. HAMMER FALLING 30 INCHES REQUIRED TO PRODUCE A PENETRATION OF 1 FOOT INTO SOIL WITH A 2 INCH OUTSIDE DIAMETER SPLIT SPOON SAMPLER. SPT REFUSAL IS PENETRATION EQUAL TO OR LESS THAN 0.1 FOOT PER 60 BLOWS.
- STRATA CORE RECOVERY (SREC.) - TOTAL LENGTH OF STRATA MATERIAL RECOVERED DIVIDED BY TOTAL LENGTH OF STRATUM AND EXPRESSED AS A PERCENTAGE.
- STRATA ROCK QUALITY DESIGNATION (SROD) - A MEASURE OF ROCK QUALITY DESCRIBED BY TOTAL LENGTH OF ROCK SEGMENTS WITHIN A STRATUM EQUAL TO OR GREATER THAN 4 INCHES DIVIDED BY THE TOTAL LENGTH OF STRATA AND EXPRESSED AS A PERCENTAGE.
- TOPSOIL (TS.) - SURFACE SOILS USUALLY CONTAINING ORGANIC MATTER.

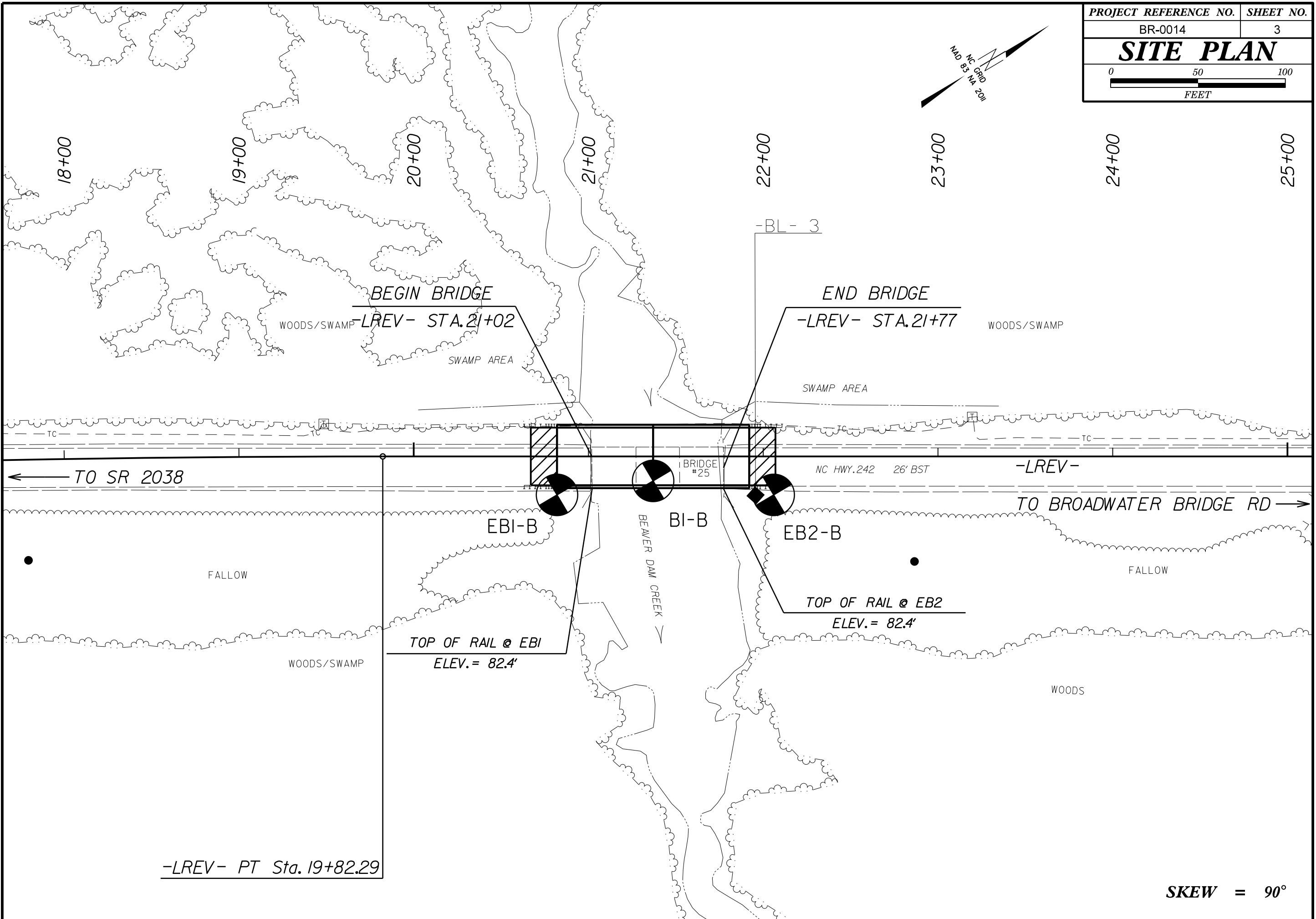
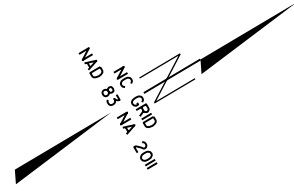
BENCH MARK: BL-2, REBAR AND CAP AT -LREV- STA. 21+96, 22' RT

ELEVATION: 79.12 FEET

NOTES:

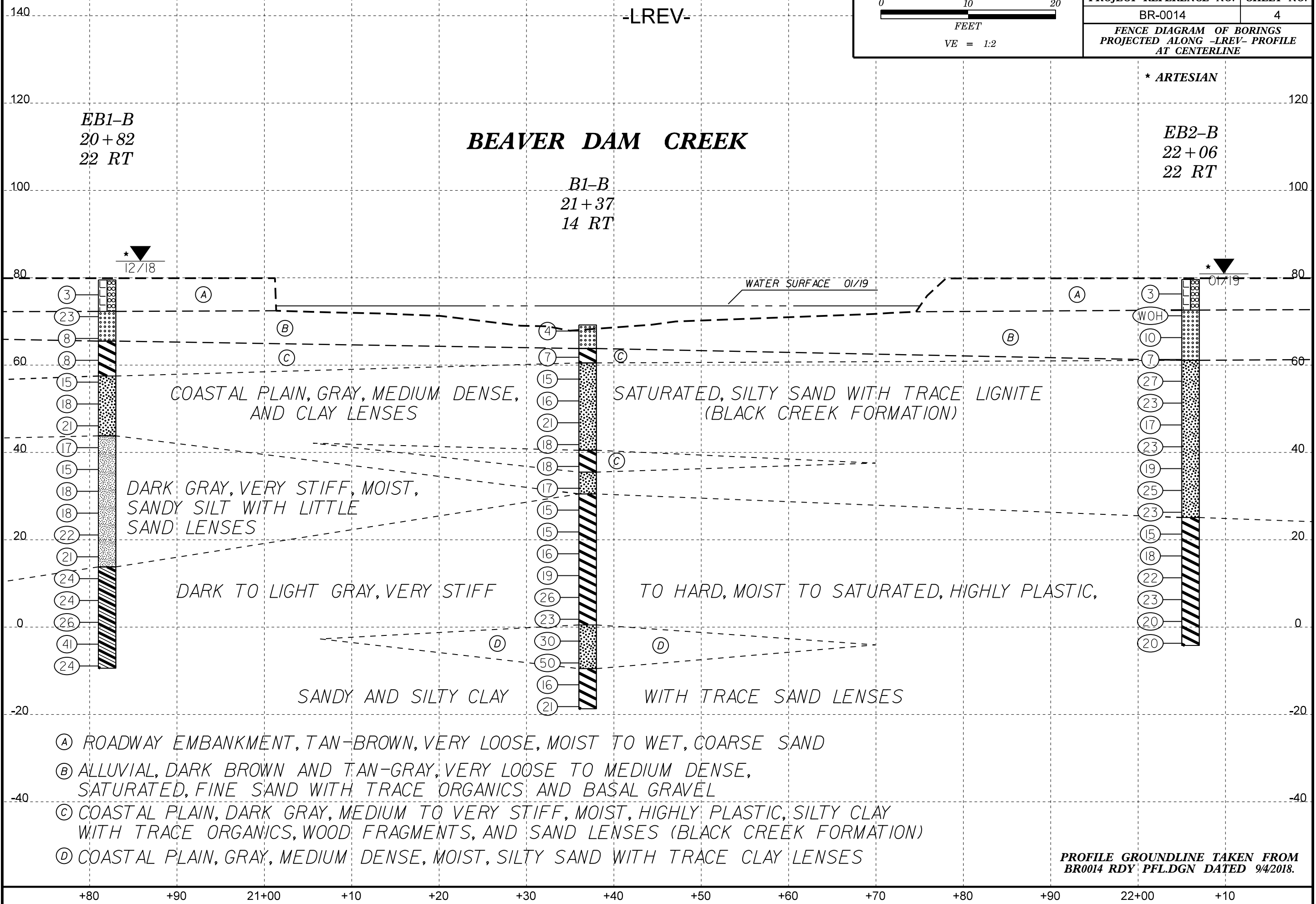
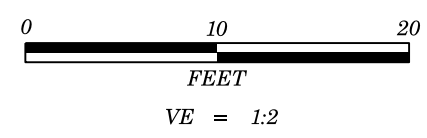
TOP OF RAIL AT EB1 STA. 21+02, 18' RT ELEV.= 82.4'

TOP OF RAIL AT EB2 STA. 21+77, 18' RT ELEV.= 82.4'



-LREV- PT Sta. 19+82.29

SKEW = 90°



- Ⓐ ROADWAY EMBANKMENT, TAN-BROWN, VERY LOOSE, MOIST TO WET, COARSE SAND
- Ⓑ ALLUVIAL, DARK BROWN AND TAN-GRAY, VERY LOOSE TO MEDIUM DENSE, SATURATED, FINE SAND WITH TRACE ORGANICS AND BASAL GRAVEL
- Ⓒ COASTAL PLAIN, DARK GRAY, MEDIUM TO VERY STIFF, MOIST, HIGHLY PLASTIC, SILTY CLAY WITH TRACE ORGANICS, WOOD FRAGMENTS, AND SAND LENSES (BLACK CREEK FORMATION)
- Ⓓ COASTAL PLAIN, GRAY, MEDIUM DENSE, MOIST, SILTY SAND WITH TRACE CLAY LENSES

PROFILE GROUNDLINE TAKEN FROM
BR0014 RDY PFL.DGN DATED 9/4/2018.

GEOTECHNICAL BORING REPORT

BORE LOG

WBS 67014.1.1		TIP BR-0014		COUNTY CUMBERLAND		GEOLOGIST Kintner, A. N.									
SITE DESCRIPTION BRIDGE NO. 0025 ON -LREV- NC 242 OVER BEAVER DAM CREEK							GROUND WTR (ft)								
BORING NO. EB1-B		STATION 20+82		OFFSET 22 ft RT		ALIGNMENT -LREV-									
COLLAR ELEV. 79.5 ft		TOTAL DEPTH 88.9 ft		NORTHING 410,274		EASTING 2,141,027									
DRILL RIG/HAMMER EFF./DATE RFO0074 CME-55 86% 11/17/2017			DRILL METHOD Mud Rotary			HAMMER TYPE Automatic									
DRILLER Pinter, D. G.		START DATE 12/19/18		COMP. DATE 12/19/18		SURFACE WATER DEPTH N/A									
ELEV (ft)	DRIVE ELEV (ft)	DEPTH (ft)	BLOW COUNT			BLOWS PER FOOT					SAMP. NO.	LOG	SOIL AND ROCK DESCRIPTION	DEPTH (ft)	
			0.5ft	0.5ft	0.5ft	0	25	50	75	100					
85															
80															
75	77.1	2.4	1	2	1										
70	72.1	7.4	4	14	9										
65	67.1	12.4	2	3	5										
60	62.1	17.4	3	4	4										
55	57.1	22.4	6	6	9										
50	52.1	27.4	7	7	11										
45	47.1	32.4	7	9	12										
40	42.1	37.4	5	7	10										
35	37.1	42.4	6	7	8										
30	32.1	47.4	6	8	10										
25	27.1	52.4	6	8	10										
20	22.1	57.4	6	11	11										
15	17.1	62.4	7	9	12										
10	12.1	67.4	5	10	14										
5	7.1	72.4	6	11	13										

WBS 67014.1.1		TIP BR-0014		COUNTY CUMBERLAND		GEOLOGIST Kintner, A. N.									
SITE DESCRIPTION BRIDGE NO. 0025 ON -LREV- NC 242 OVER BEAVER DAM CREEK							GROUND WTR (ft)								
BORING NO. EB1-B		STATION 20+82		OFFSET 22 ft RT		ALIGNMENT -LREV-									
COLLAR ELEV. 79.5 ft		TOTAL DEPTH 88.9 ft		NORTHING 410,274		EASTING 2,141,027									
DRILL RIG/HAMMER EFF./DATE RFO0074 CME-55 86% 11/17/2017			DRILL METHOD Mud Rotary			HAMMER TYPE Automatic									
DRILLER Pinter, D. G.		START DATE 12/19/18		COMP. DATE 12/19/18		SURFACE WATER DEPTH N/A									
ELEV (ft)	DRIVE ELEV (ft)	DEPTH (ft)	BLOW COUNT			BLOWS PER FOOT					SAMP. NO.	LOG	SOIL AND ROCK DESCRIPTION	DEPTH (ft)	
			0.5ft	0.5ft	0.5ft	0	25	50	75	100					
5															
0	2.1	77.4	4	14	12										
-5	-2.9	82.4	6	11	30										
	-7.9	87.4	6	12	12										

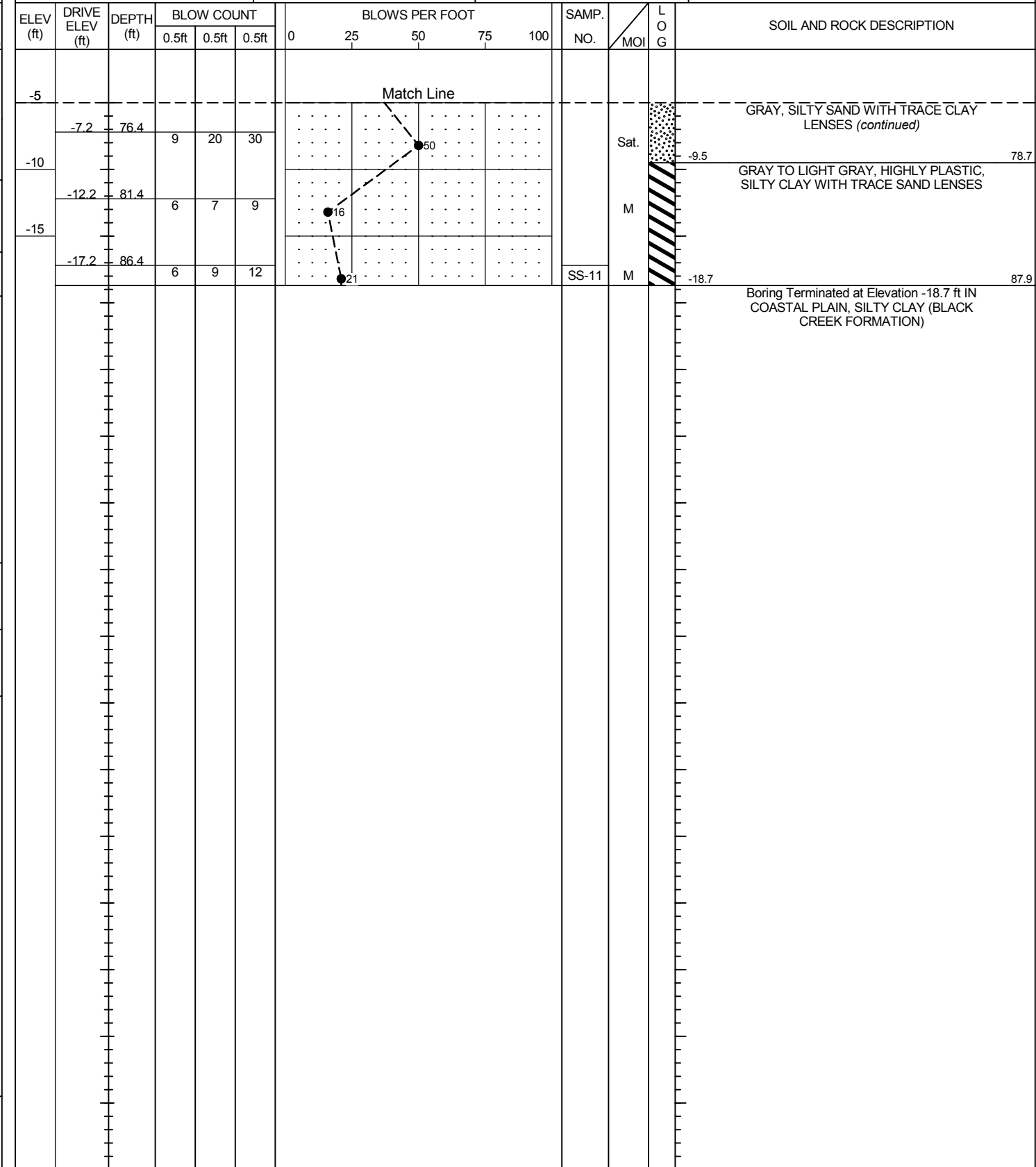
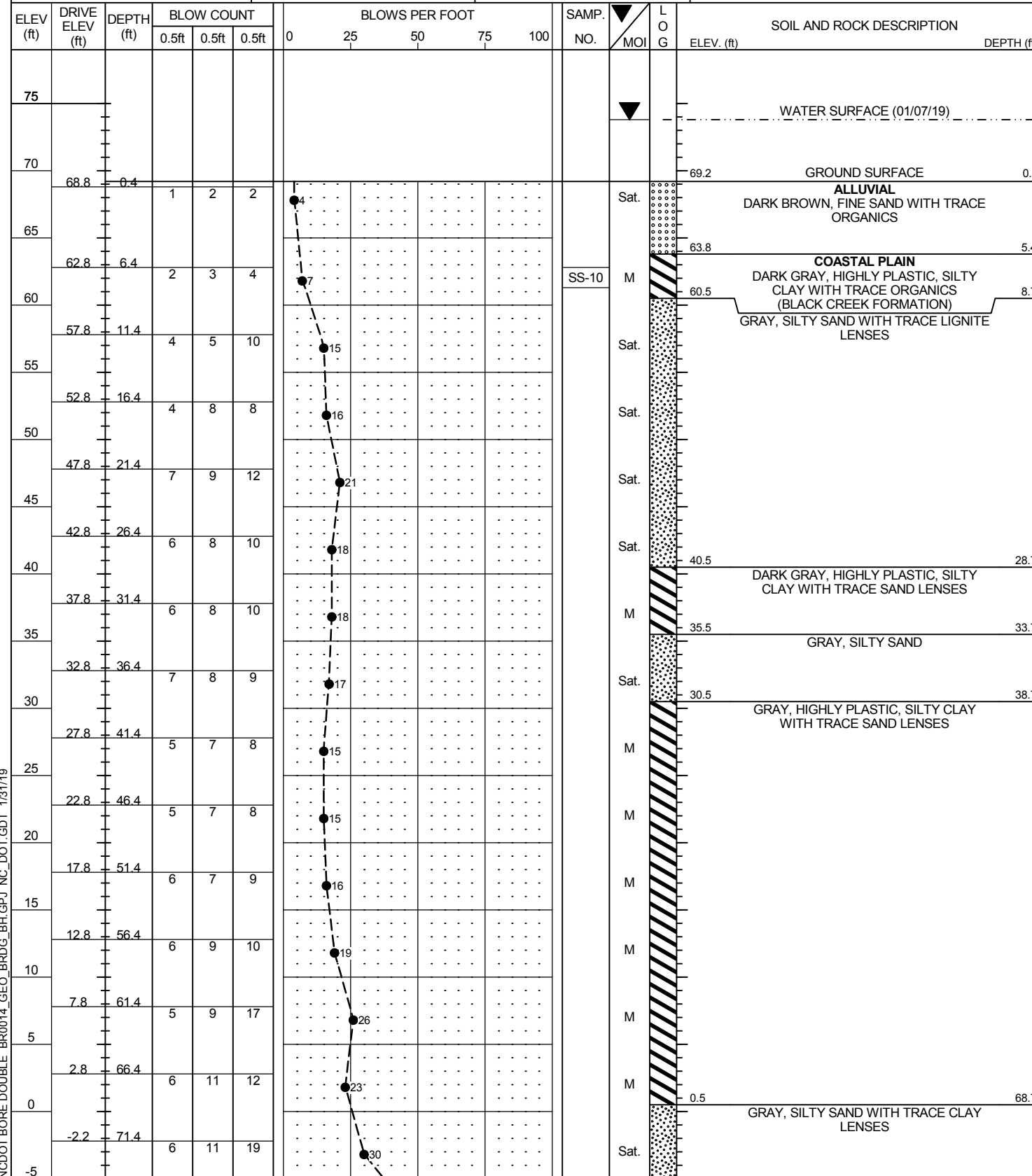
NCDOT BORE DOUBLE BR0014_GEO_BRDG_BH.GPJ_NC_DOT.GDT 1/31/19

GEOTECHNICAL BORING REPORT

BORE LOG

WBS 67014.1.1	TIP BR-0014	COUNTY CUMBERLAND	GEOLOGIST Kintner, A. N.
SITE DESCRIPTION BRIDGE NO. 0025 ON -LREV- NC 242 OVER BEAVER DAM CREEK			GROUND WTR (ft)
BORING NO. B1-B	STATION 21+37	OFFSET 14 ft RT	ALIGNMENT -LREV-
COLLAR ELEV. 69.2 ft	TOTAL DEPTH 87.9 ft	NORTHING 410,326	EASTING 2,141,048
DRILL RIG/HAMMER EFF./DATE RFO0074 CME-55 86% 11/17/2017		DRILL METHOD Mud Rotary	HAMMER TYPE Automatic
DRILLER Pinter, D. G.	START DATE 01/07/19	COMP. DATE 01/07/19	SURFACE WATER DEPTH 4.6ft

WBS 67014.1.1	TIP BR-0014	COUNTY CUMBERLAND	GEOLOGIST Kintner, A. N.
SITE DESCRIPTION BRIDGE NO. 0025 ON -LREV- NC 242 OVER BEAVER DAM CREEK			GROUND WTR (ft)
BORING NO. B1-B	STATION 21+37	OFFSET 14 ft RT	ALIGNMENT -LREV-
COLLAR ELEV. 69.2 ft	TOTAL DEPTH 87.9 ft	NORTHING 410,326	EASTING 2,141,048
DRILL RIG/HAMMER EFF./DATE RFO0074 CME-55 86% 11/17/2017		DRILL METHOD Mud Rotary	HAMMER TYPE Automatic
DRILLER Pinter, D. G.	START DATE 01/07/19	COMP. DATE 01/07/19	SURFACE WATER DEPTH 4.6ft



NCDOT BORE DOUBLE BR0014_GEO_BRDG_BH.GPJ_NC_DOT.GDT 1/31/19

EB1-B

SOIL TEST RESULTS															
SAMPLE NO.	OFFSET	STATION	DEPTH INTERVAL	AASHTO CLASS.	L.L.	P.I.	% BY WEIGHT				% PASSING (SIEVES)			% MOISTURE	% ORGANIC
							C.SAND	F.SAND	SILT	CLAY	10	40	200		
SS-1	22' RT	20+82	2.4-3.9	A-1-b(0)	-	NP	78.9	11.9	1.2	8.0	92	44	9	-	-
SS-2	22' RT	20+82	12.4-13.9	A-3(0)	-	-	61.6	33.4	1.0	4.0	92	77	6	-	-
SS-3	22' RT	20+82	17.4-18.9	A-7-6(51)	75	48	5.4	3.2	16.9	74.4	100	96	92	-	-
SS-4	22' RT	20+82	22.4-23.9	A-2-4(0)	-	NP	32.0	47.9	4.0	16.1	98	92	22	-	-
SS-5	22' RT	20+82	42.4-43.9	A-4(1)	33	10	8.5	54.5	10.9	26.2	100	98	43	-	-
SS-6	22' RT	20+82	72.4-73.9	A-6(4)	35	15	3.0	54.9	11.9	30.2	98	96	47	-	-

B1-B

SOIL TEST RESULTS															
SAMPLE NO.	OFFSET	STATION	DEPTH INTERVAL	AASHTO CLASS.	L.L.	P.I.	% BY WEIGHT				% PASSING (SIEVES)			% MOISTURE	% ORGANIC
							C.SAND	F.SAND	SILT	CLAY	10	40	200		
SS-10	14' RT	21+37	6.4-5.9	A-7-5(46)	73	43	4.8	3.6	17.1	74.4	100	97	92	-	-
SS-11	14' RT	21+37	86.4-87.9	A-7-6(41)	62	41	1.8	13.9	46.1	38.2	100	99	91	-	-

EB2-B

SOIL TEST RESULTS															
SAMPLE NO.	OFFSET	STATION	DEPTH INTERVAL	AASHTO CLASS.	L.L.	P.I.	% BY WEIGHT				% PASSING (SIEVES)			% MOISTURE	% ORGANIC
							C.SAND	F.SAND	SILT	CLAY	10	40	200		
SS-7	22' RT	22+06	12.3-13.8	A-3(0)	-	NP	62.8	30.4	2.8	4.0	100	79	9	-	-
SS-8	22' RT	22+06	27.3-28.8	A-2-4(0)	-	NP	65.4	25.6	1.0	8.0	100	95	11	-	-
SS-9	22' RT	22+06	57.3-58.8	A-7-6(35)	60	41	2.0	22.1	21.5	54.3	100	99	82	-	-

SITE PHOTOGRAPH

Bridge No. 25 on -LREV- (NC 242) over Beaver Dam Creek



Looking Northeast towards End Bent 2