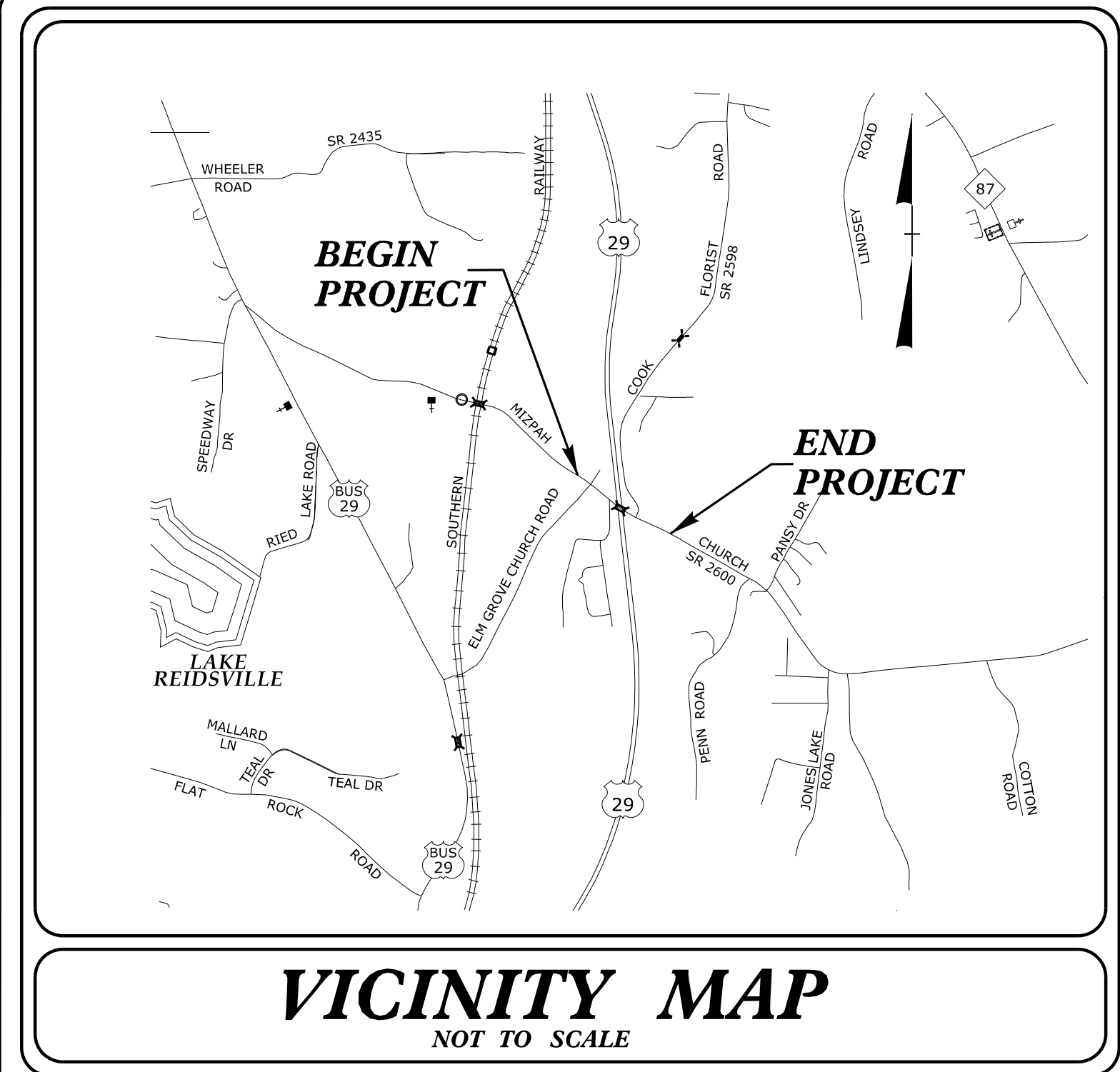
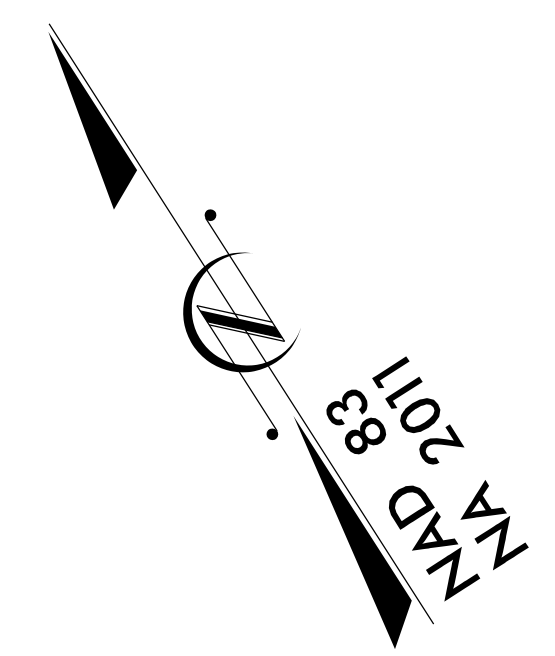


CONTRACT: C204392 TIP PROJECT: BR-0042



STATE OF NORTH CAROLINA
DIVISION OF HIGHWAYS
PLAN FOR PROPOSED
HIGHWAY EROSION CONTROL
ROCKINGHAM COUNTY

**LOCATION: SR 2600 (MIZPAH CHURCH RD)
OVER US-29**
**TYPE OF WORK: GRADING, DRAINAGE, PAVING,
AND STRUCTURES**

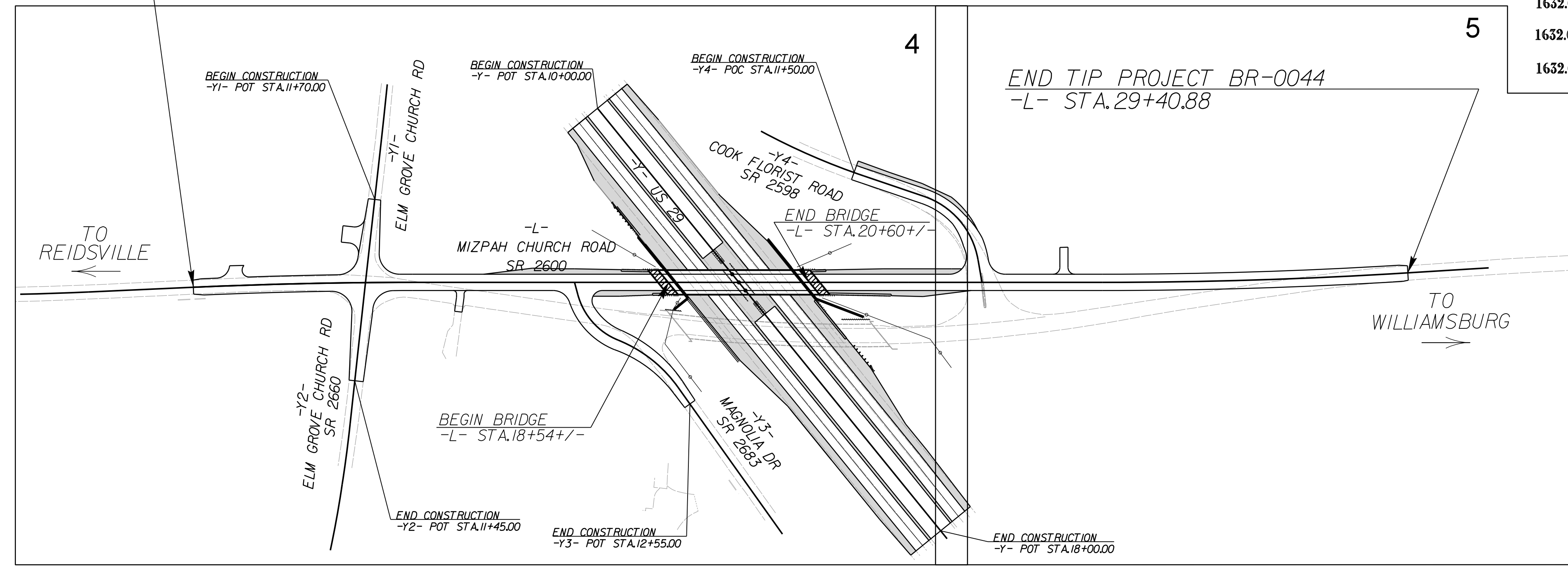


STATE	STATE PROJECT REFERENCE NO.	SHEET NO.	TOTAL SHEETS
N.C.	BR-0042	EC-1	
STATE PROJ. NO.	F.A. PROJ. NO.	DESCRIPTION	

EROSION AND SEDIMENT CONTROL MEASURES

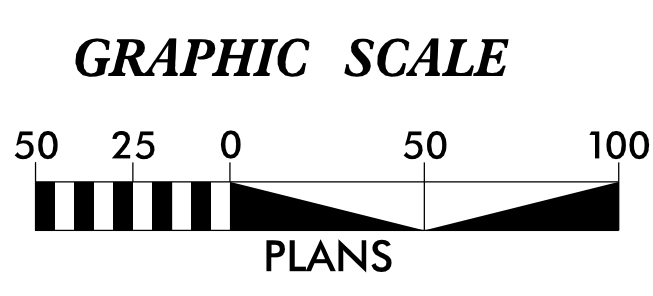
Std. #	Description	Symbol
1630.05	Temporary Silt Ditch	TD
1630.05	Temporary Diversion	TD
1605.01	Temporary Silt Fence	III III III
1606.01	Special Sediment Control Fence	III III III
1622.01	Temporary Berms and Slope Drains	TD
1630.02	Silt Basin Type B	SB
1633.01	Temporary Rock Silt Check Type-A	RS
	Temporary Rock Silt Check Type-A with Matting and Polyacrylamide (PAM)	RS
1633.02	Temporary Rock Silt Check Type-B	RS
	Wattle/Coir Fiber Wattle	W
	Wattle/Coir Fiber Wattle with Polyacrylamide (PAM)	W
1634.01	Temporary Rock Sediment Dam Type-A	RD
1634.02	Temporary Rock Sediment Dam Type-B	RD
1635.01	Rock Pipe Inlet Sediment Trap Type-A	RPI
1635.02	Rock Pipe Inlet Sediment Trap Type-B	RPI
1630.04	Stilling Basin	SB
1630.06	Special Stilling Basin	SB
	Rock Inlet Sediment Trap:	
1632.01	Type A	A
1632.02	Type B	B
1632.03	Type C	C
	Skimmer Basin	SK
	Tiered Skimmer Basin	SK
	Infiltration Basin	IB

BEGIN TIP PROJECT BR-0042
-L- STA. 11+54.68



**THIS PROJECT CONTAINS
EROSION CONTROL PLANS
FOR CLEARING AND
GRUBBING PHASE OF
CONSTRUCTION.**

**THIS PROJECT HAS
BEEN DESIGNED TO
SENSITIVE WATERSHED
STANDARDS.**



THESE EROSION AND SEDIMENT CONTROL PLANS COMPLY WITH
THE APPLICABLE REGULATIONS SET FORTH BY THE NCG-010000
GENERAL CONSTRUCTION PERMIT EFFECTIVE APRIL 1, 2019
AND ISSUED BY THE NORTH CAROLINA DEPARTMENT OF
ENVIRONMENTAL QUALITY DIVISION OF WATER RESOURCES.



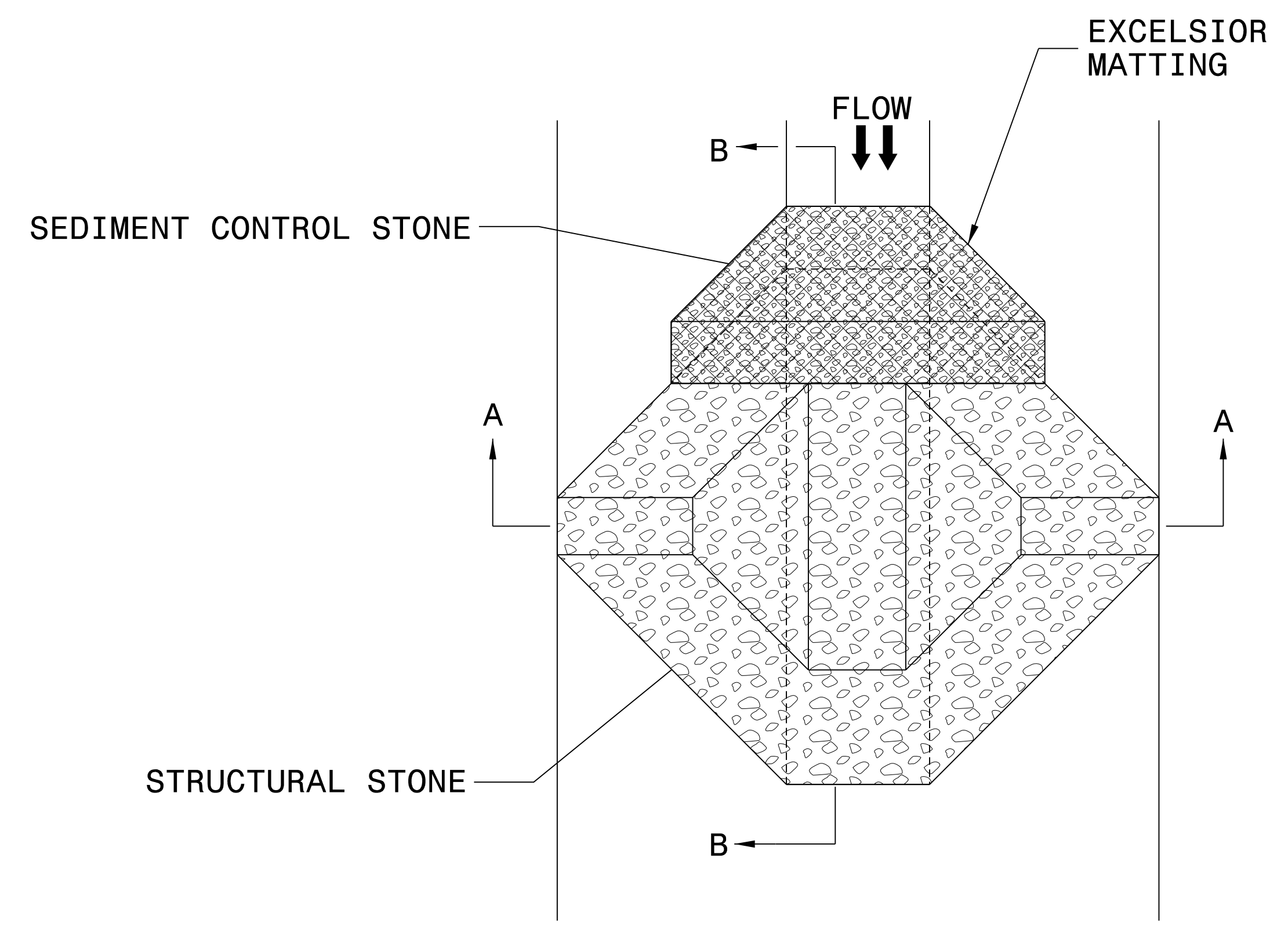
Prepared in the Office of:
AECOM
Firm License No. F-0342
701 Corporate Center Drive, Suite 475
Raleigh NC 27607
(919) 854-6200 (919) 854-6259 (Fax)

Designed by:
RENE REMY, CPESC, CPSWQ 3125
NAME LEVEL III CERTIFICATION NO.

Roadway Standard Drawings
The following roadway english standards as appear in "Roadway Standard Drawings"- Roadway Design Unit - N. C. Department of Transportation - Raleigh, N. C., dated January 2018 and the latest revision thereto are applicable to this project and by reference hereby are considered a part of these plans.

1604.01 Railroad Erosion Control Detail	1632.01 Rock Inlet Sediment Trap Type A
1605.01 Temporary Silt Fence	1632.02 Rock Inlet Sediment Trap Type B
1606.01 Special Sediment Control Fence	1632.03 Rock Inlet Sediment Trap Type C
1607.01 Gravel Construction Entrance	1633.01 Temporary Rock Silt Check Type A
1622.01 Temporary Berms and Slope Drains	1633.02 Temporary Rock Silt Check Type B
1630.01 Riser Basin	1634.01 Temporary Rock Sediment Dam Type A
1630.02 Silt Basin Type B	1634.02 Temporary Rock Sediment Dam Type B
1630.03 Temporary Silt Ditch	1635.01 Rock Pipe Inlet Sediment Trap Type A
1630.04 Stilling Basin	1635.02 Rock Pipe Inlet Sediment Trap Type B
1630.05 Temporary Diversion	1640.01 Coir Fiber Baffle
1630.06 Special Stilling Basin	1645.01 Temporary Stream Crossing
1631.01 Matting Installation	

TEMPORARY ROCK SILT CHECK TYPE 'A' WITH EXCELSIOR MATTING AND POLYACRYLAMIDE (PAM)



PLAN

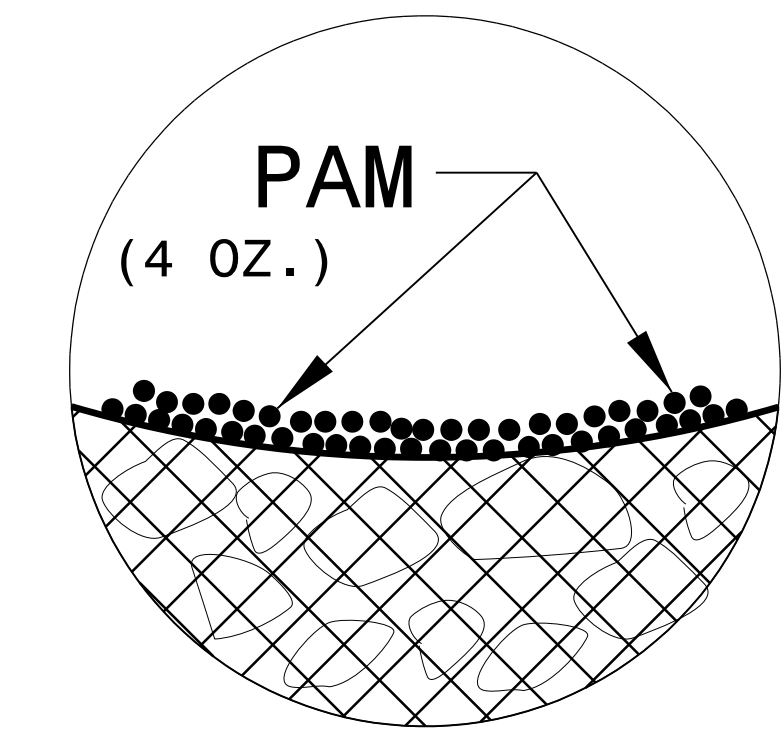
NOTES:

INSTALL TEMPORARY ROCK SILT CHECK TYPE A IN ACCORDANCE WITH ROADWAY STANDARD DRAWING NO. 1633.01.

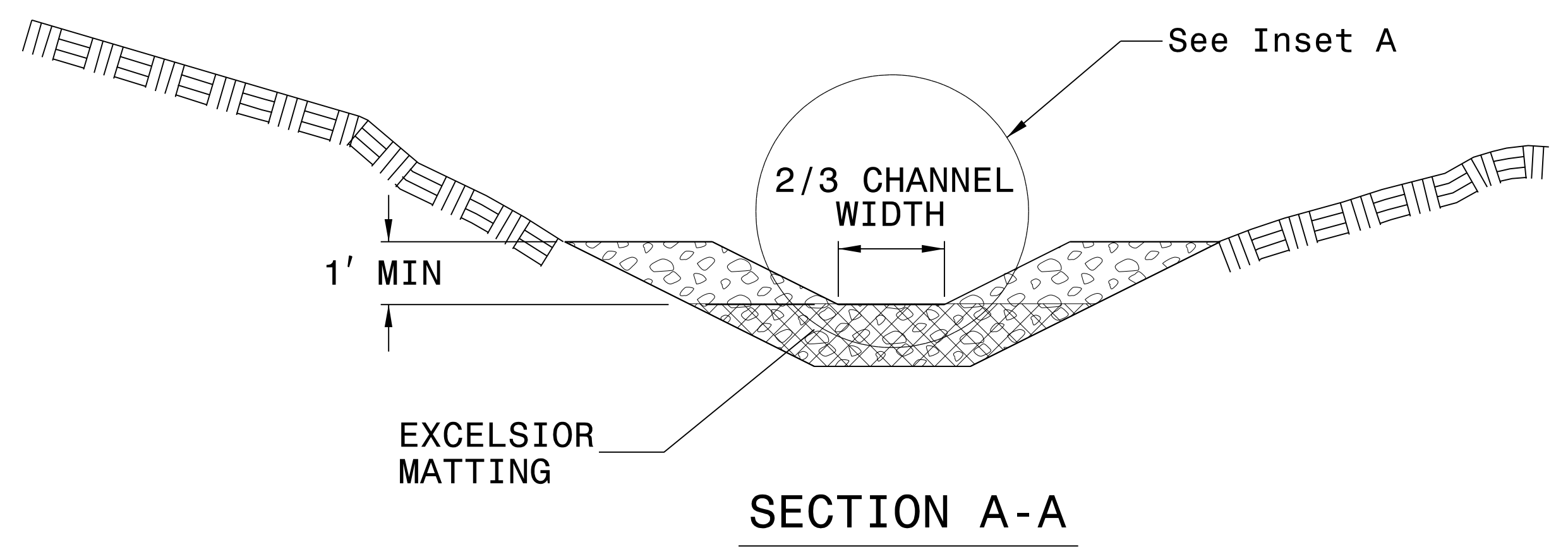
USE EXCELSIOR FOR MATTING MATERIAL AND ANCHOR MATTING SECTION AT TOP AND BOTTOM WITH CLASS B STONE.

PRIOR TO POLYACRYLAMIDE (PAM) APPLICATION, OBTAIN A SOIL SAMPLE FROM PROJECT LOCATION, AND FROM OFFSITE MATERIAL, AND ANALYZE FOR APPROPRIATE PAM FLOCCULANT TO BE APPLIED TO EACH ROCK SILT CHECK.

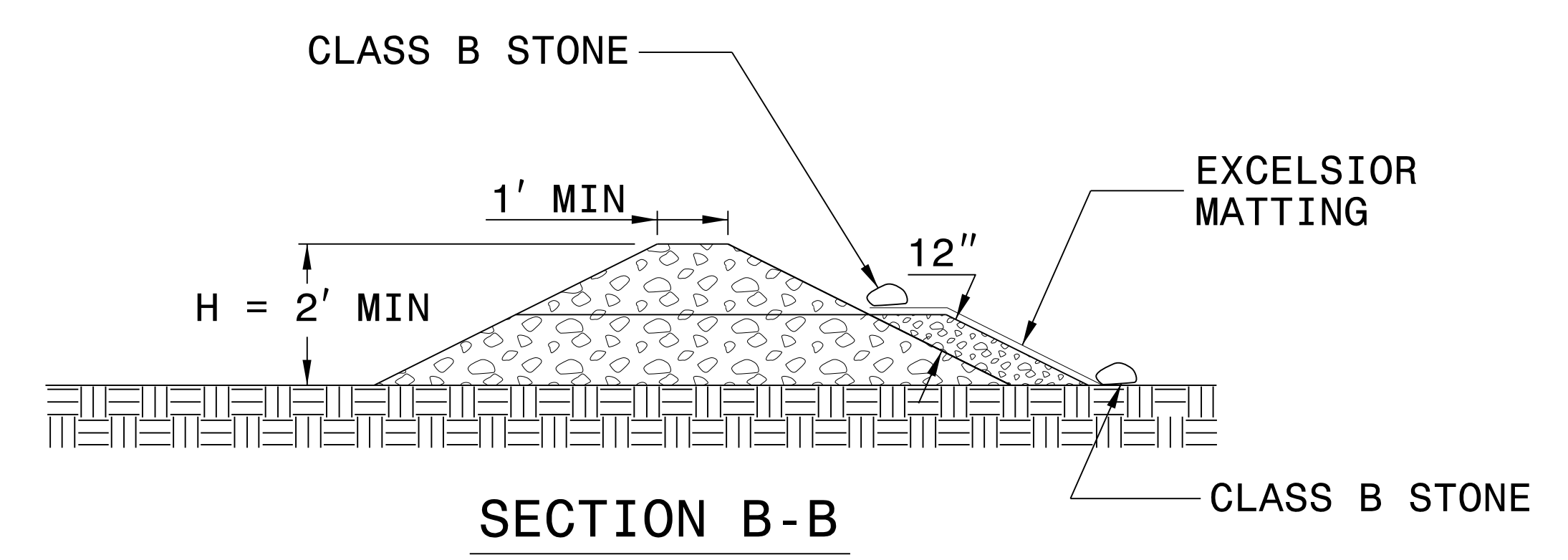
INITIALLY APPLY 4 OUNCES OF POLYACRYLAMIDE (PAM) TO TOP OF MATTING SECTION AND AFTER EVERY RAINFALL EVENT THAT EQUALS OR EXCEEDS 0.50 INCHES.



INSET A



SECTION A-A

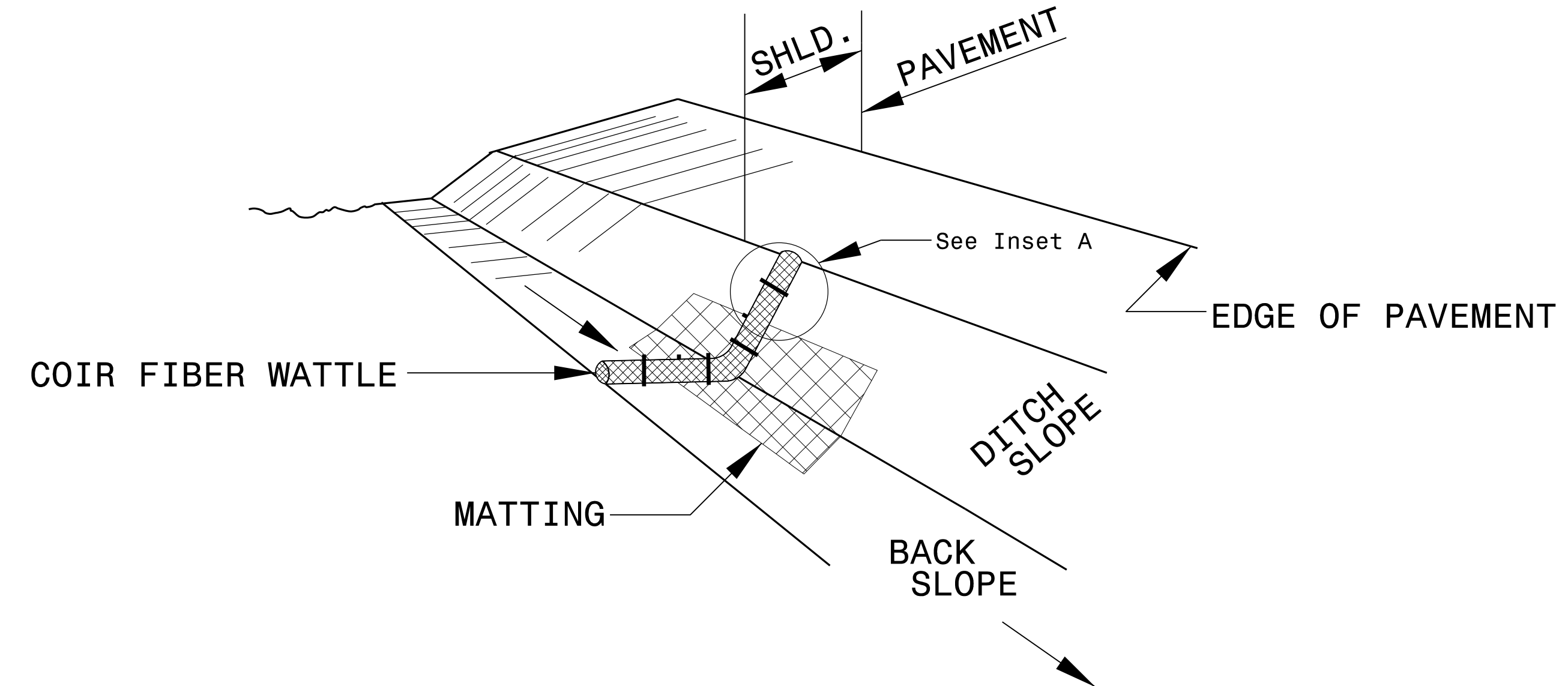


SECTION B-B

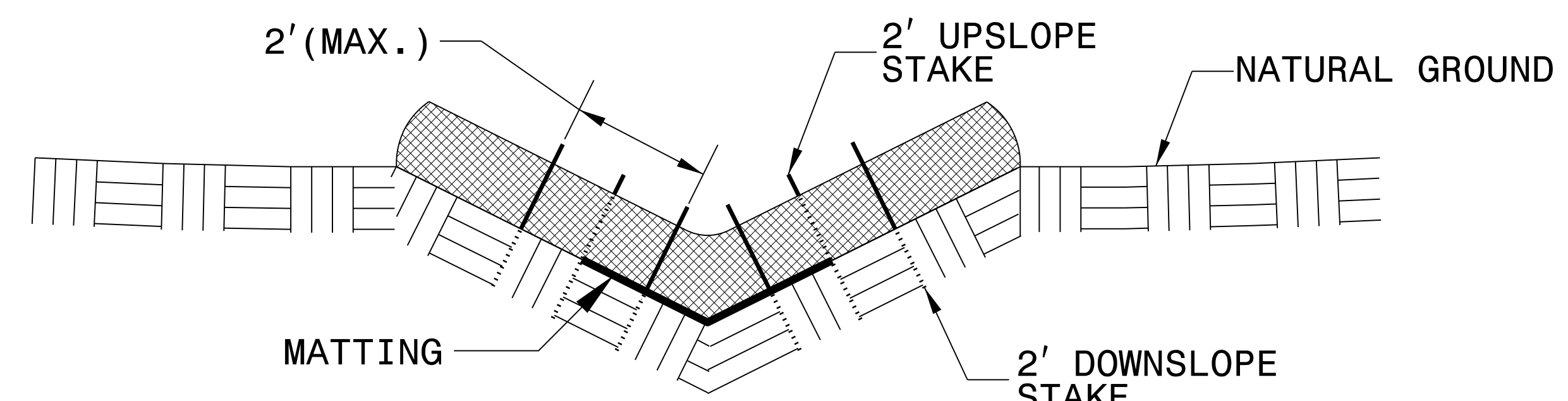
NOT TO SCALE

5/14/99
RA:\envr\proj\design\BR0042_REU\EC02.dgn

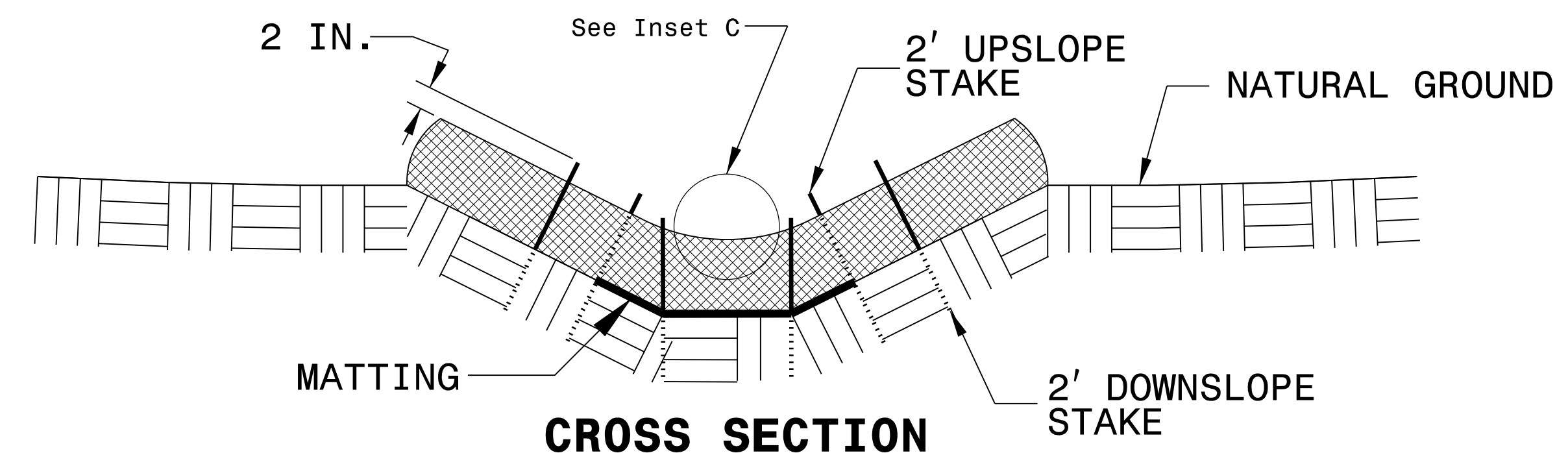
COIR FIBER WATTLE WITH POLYACRYLAMIDE (PAM) DETAIL



ISOMETRIC VIEW



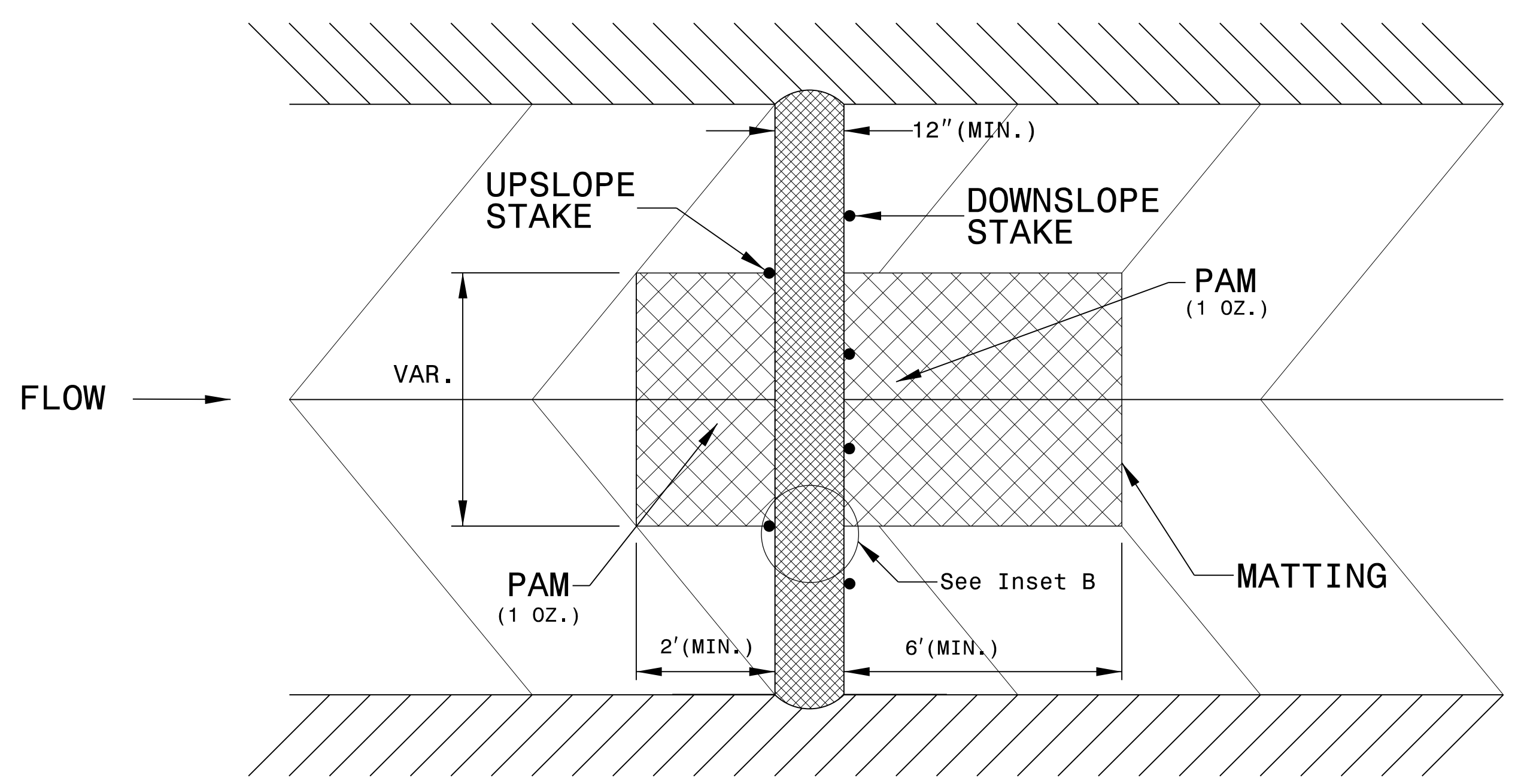
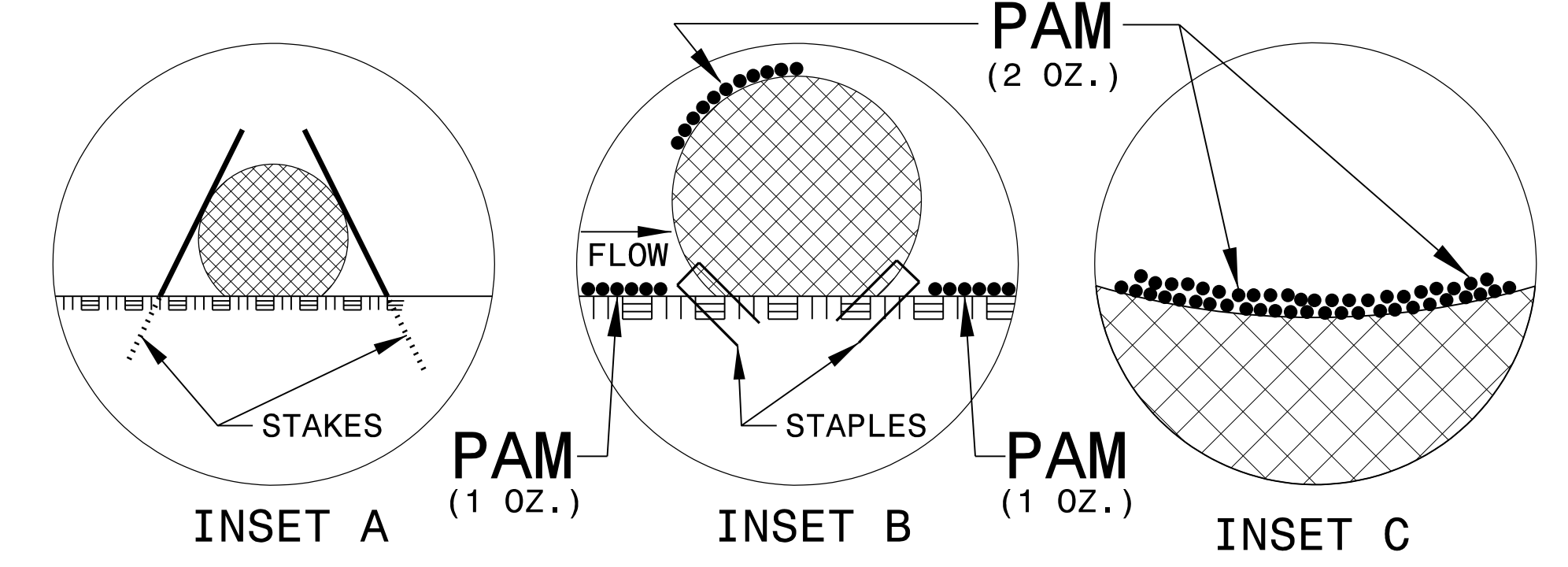
CROSS SECTION VEE DITCH



CROSS SECTION TRAPEZOIDAL DITCH

NOTES:

- USE MINIMUM 12 IN. DIAMETER COIR FIBER (COCONUT FIBER) WATTLE.
- USE 2 FT. WOODEN STAKES WITH A 2 IN. BY 2 IN. NOMINAL CROSS SECTION.
- ONLY INSTALL WATTLE(S) TO A HEIGHT IN DITCH SO FLOW WILL NOT WASH AROUND WATTLE AND SCOUR DITCH SLOPES AND AS DIRECTED.
- INSTALL A MINIMUM OF 2 UPSLOPE STAKES AND 4 DOWNSLOPE STAKES AT AN ANGLE TO WEDGE WATTLE TO BOTTOM OF DITCH.
- PROVIDE STAPLES MADE OF 0.125 IN. DIAMETER STEEL WIRE FORMED INTO A U SHAPE NOT LESS THAN 12" IN LENGTH.
- INSTALL STAPLES APPROXIMATELY EVERY 1 LINEAR FOOT ON BOTH SIDES OF WATTLE AND AT EACH END TO SECURE IT TO THE SOIL.
- INSTALL MATTING IN ACCORDANCE WITH SECTION 1631 OF THE STANDARD SPECIFICATIONS.
- PRIOR TO POLYACRYLAMIDE (PAM) APPLICATION, OBTAIN A SOIL SAMPLE FROM PROJECT LOCATION, AND FROM OFFSITE MATERIAL, AND ANALYZE FOR APPROPRIATE PAM FLOCCULANT TO BE APPLIED TO EACH WATTLE.
- INITIALLY APPLY 2 OUNCES OF ANIONIC OR NEUTRALLY CHARGED PAM OVER WATTLE WHERE WATER WILL FLOW AND 1 OUNCE OF PAM ON MATTING ON EACH SIDE OF WATTLE. REAPPLY PAM AFTER EVERY RAINFALL EVENT THAT IS EQUAL TO OR EXCEEDS 0.50 IN.



TOP VIEW

5/14/99
 R:\Environment\Design\BR0042.REU.EC02A.dgn
 2:17:08 PM
 R:\Environment\Design\BR0042.REU.EC02A.dgn

DIVISION OF HIGHWAYS
STATE OF NORTH CAROLINA

SOIL STABILIZATION TIMEFRAMES

<i>SITE DESCRIPTION</i>	<i>STABILIZATION TIME</i>	<i>TIMEFRAME EXCEPTIONS</i>
PERIMETER DIKES, SWALES, DITCHES AND SLOPES	7 DAYS	NONE
HIGH QUALITY WATER (HQW) ZONES	7 DAYS	NONE
SLOPES STEEPER THAN 3:1	7 DAYS	IF SLOPES ARE 10' OR LESS IN LENGTH AND ARE NOT STEEPER THAN 2:1, 14 DAYS ARE ALLOWED.
SLOPES 3:1 OR FLATTER	14 DAYS	7 DAYS FOR SLOPES GREATER THAN 50' IN LENGTH.
ALL OTHER AREAS WITH SLOPES FLATTER THAN 4:1	14 DAYS	NONE, EXCEPT FOR PERIMETERS AND HQW ZONES.

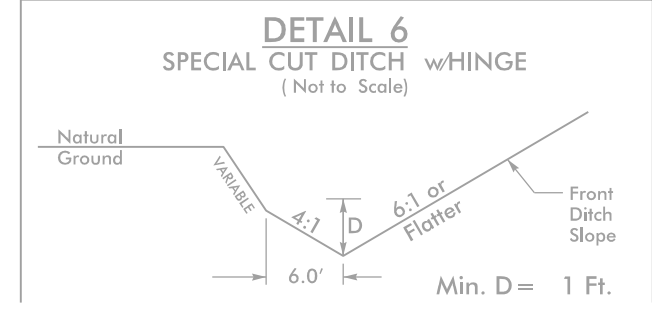
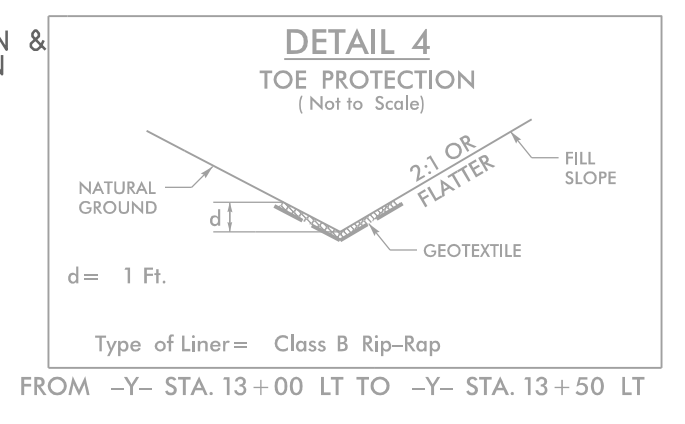
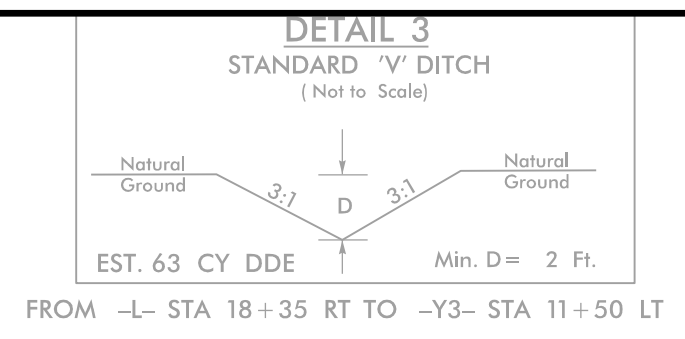
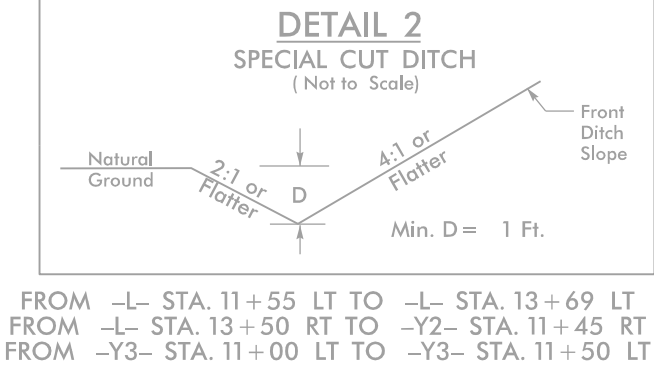
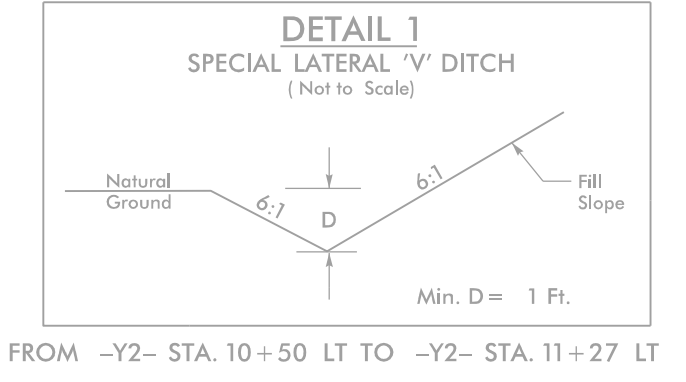
PROJECT REFERENCE NO.	SHEET NO.
BR-0042	EC-04/CONST.4
RW SHEET NO.	
Prepared in the Office of: AECOM <small>NC FIRM LICENSE No. F-0342 701 Corporate Center Drive, Suite 415 Raleigh, NC 27601 (919) 854-6200 • (919) 854-6259(FAX)</small>	



NAD 83 N.A. 2011

NOTE:
PLACE TEMPORARY ROCK SEDIMENT DAMS TYPE - B AND TEMPORARY ROCK SILT CHECKS TYPE - A AT DRAINAGE OUTLETS.

CLEARING AND GRUBBING EROSION CONTROL FOR CONSTRUCTION SHEET 04



BEGIN CONSTRUCTION
-L- POC STA. 9+48.00

BEGIN CONSTRUCTION
-Y1- POT STA. 11+70.00

BEGIN CONSTRUCTION
-Y- POT STA. 10+00.00

END CONSTRUCTION
-Y2- POT STA. 13+92.69

END CONSTRUCTION
-Y3- POT STA. 12+55.00

END CONSTRUCTION
-Y- POT STA. 18+00.00

BEGIN TIP PROJECT BR-0042
-L- PC STA 11+54.68

MATCHLINE -L- STA 22 + 50
SEE SHEET EC-05

PAVEMENT REMOVAL
FOR BRIDGE / PAVEMENT RELATIONSHIP SKETCH SEE SHEET 2B-1

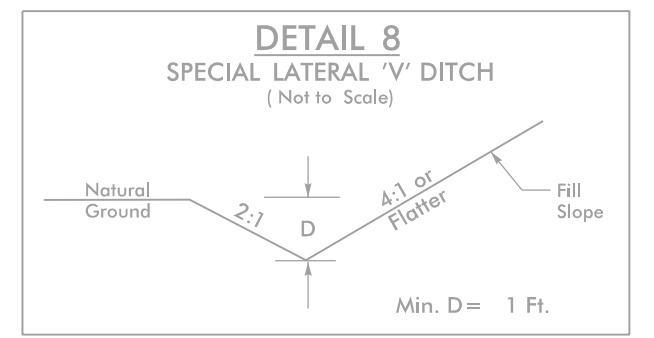
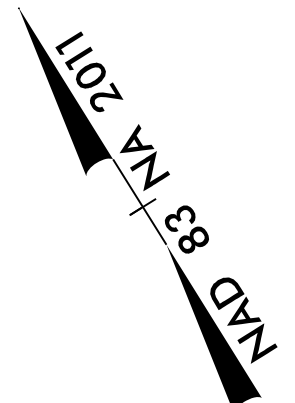
FOR -L- PROFILE SEE SHEET 6
FOR -Y LT- & -Y RT- PROFILE SEE SHEET 7
FOR -Y1-, -Y2-, -Y3-, & -Y4- PROFILES SEE SHEET 8

5/14/2011
21:13 PX Design\BR0042_rev-EC-04.dgn
R:\Enviro\04\Design\BR0042_rev-EC-04.dgn



NOTE: PLACE TEMPORARY ROCK SEDIMENT DAMS TYPE - B AND TEMPORARY ROCK SILT CHECKS TYPE - A AT DRAINAGE OUTLETS.

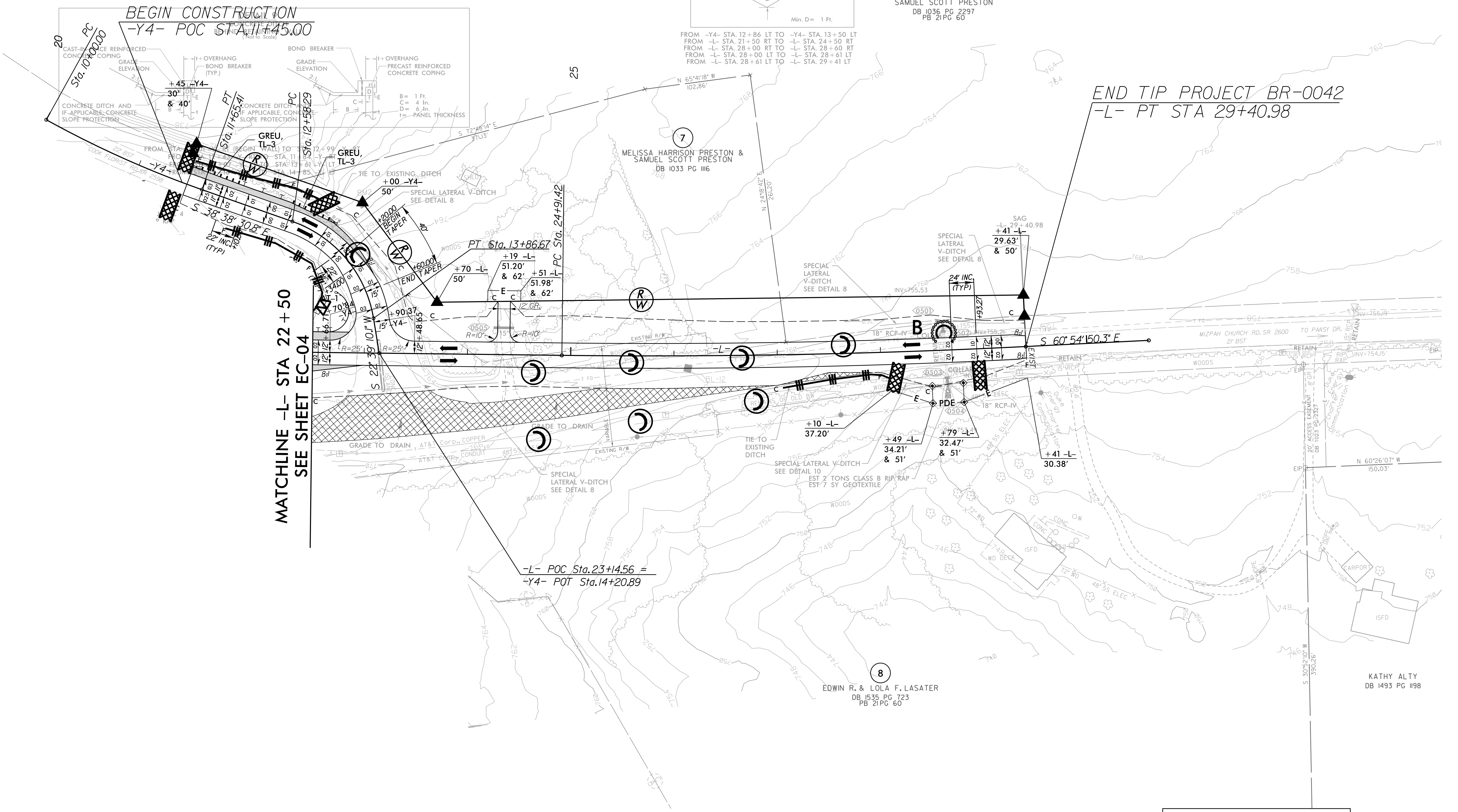
CLEARING AND GRUBBING EROSION CONTROL FOR CONSTRUCTION SHEET 05



FROM -Y4- STA. 12+86 LT TO -Y4- STA. 13+50 LT
 FROM -L- STA. 21+50 RT TO -L- STA. 24+50 RT
 FROM -L- STA. 28+00 RT TO -L- STA. 28+60 RT
 FROM -L- STA. 28+00 LT TO -L- STA. 28+61 LT
 FROM -L- STA. 28+61 LT TO -L- STA. 29+41 LT

6
 MELISSA HARRISON PRESTON & SAMUEL SCOTT PRESTON
 DB 1036 PG 2297
 PB 21 PG 60

END TIP PROJECT BR-0042
 -L- PT STA 29+40.98



-L- POC Sta. 23+14.56 =
 -Y4- POT Sta. 14+20.89

8
 EDWIN R. & LOLA F. LASATER
 DB 1635 PG 723
 PB 21 PG 60

KATHY ALTY
 DB 1493 PG 1198


FOR -L- PROFILE SEE SHEET 6
 FOR -Y4- PROFILES SEE SHEET 8

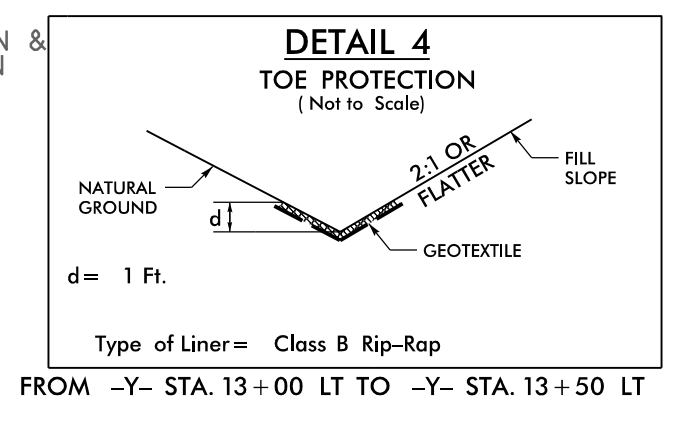
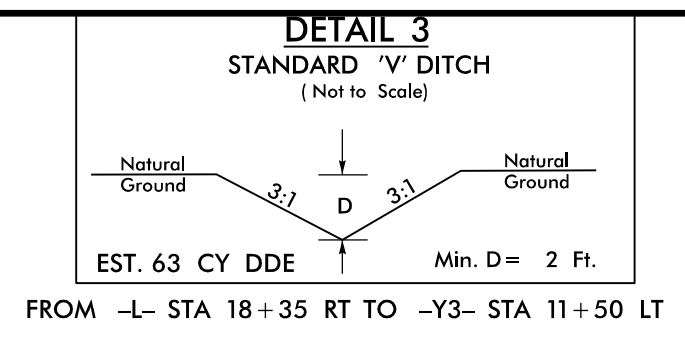
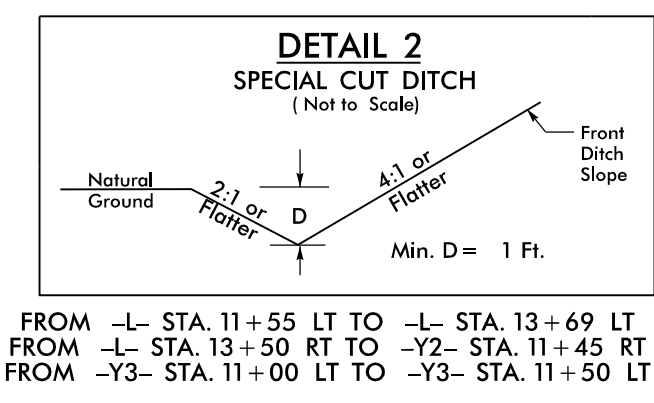
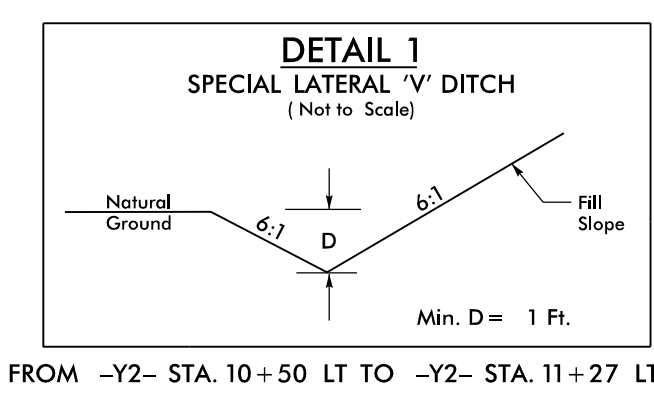
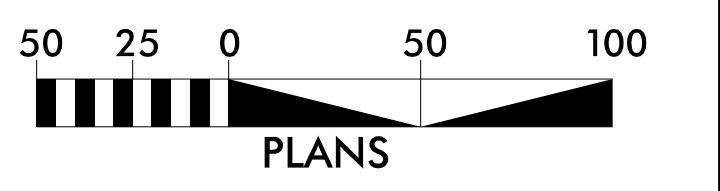
PAVEMENT REMOVAL

5/14/99

R:\Environment\Design\BR0042_reu_EC-05.dgn
 21715 PX Design\BR0042_reu_EC-05.dgn

5/14/99

PROJECT REFERENCE NO.	SHEET NO.
BR-0042	EC-06/CONST.4
RW SHEET NO.	
Prepared in the Office of:	
 AECOM <small>NC FIRM LICENSE No. F-0342 701 Corporate Center Drive, Suite 475 Raleigh, NC 27607 (919) 854-6200 • (919) 854-6259 (FAX)</small>	



Utilize Fabric Insert Inlet Protection Devices in lieu of Rock Inlet Sediment Traps, Type-C as Directed to avoid impoundment of runoff in Roadway open to Traffic

Place Matting for Erosion Control on Slope as Work Allows.
-L- Sta. 16+00 to Sta. 18+00 LT
-L- Sta. 17+50 to Sta. 18+50 RT

BEGIN CONSTRUCTION
-L- POC STA. 9+48.00

BEGIN CONSTRUCTION
-Y1- POT STA. 11+70.00

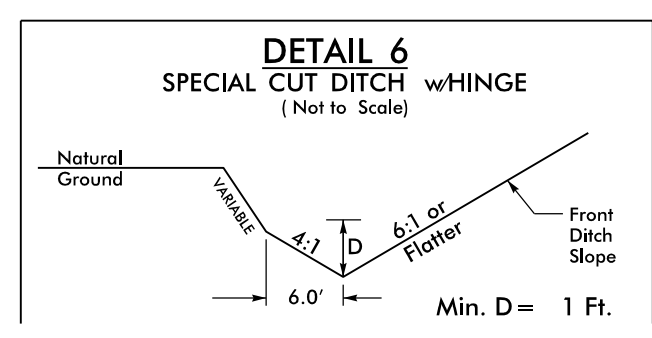
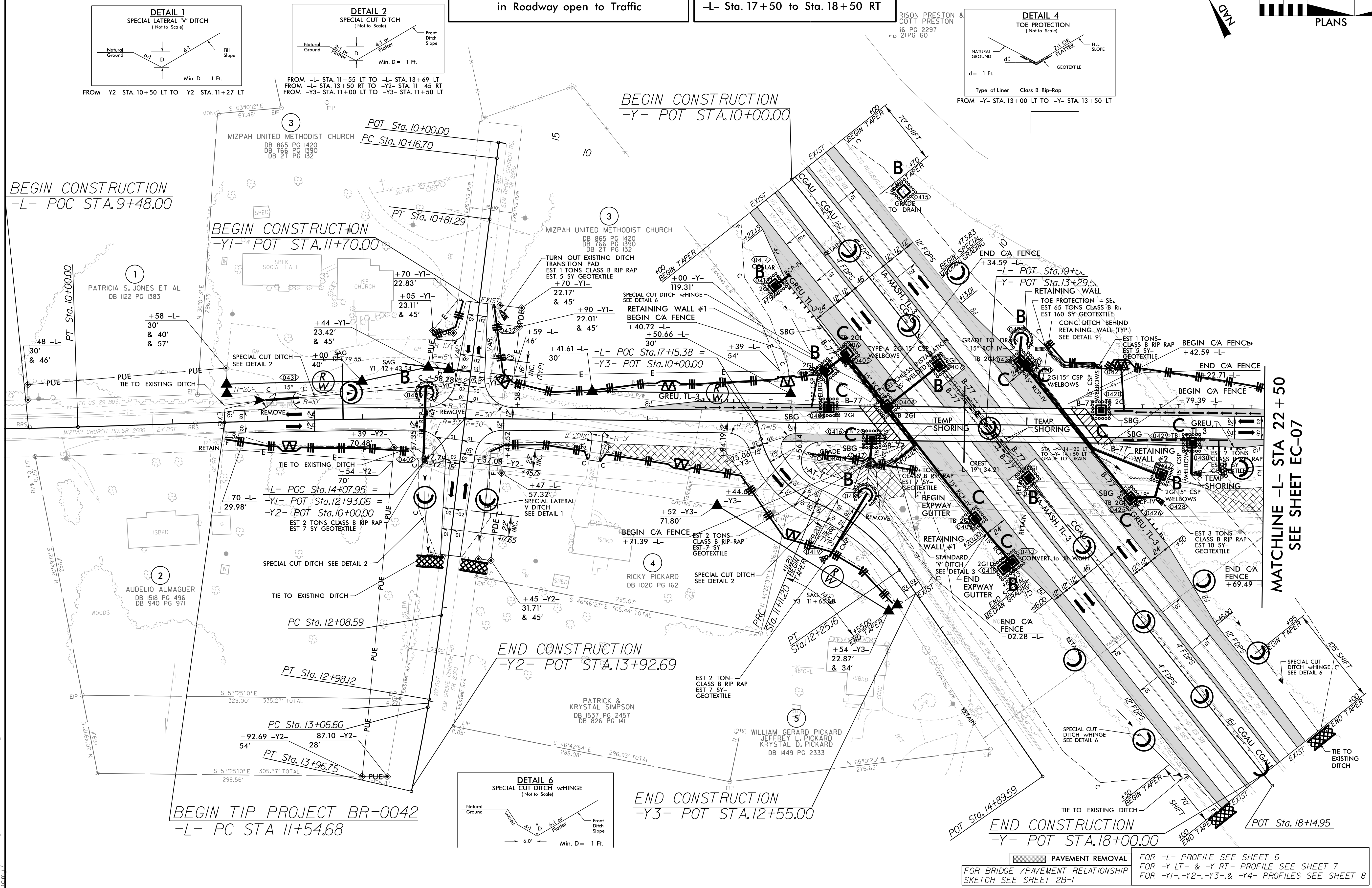
BEGIN CONSTRUCTION
-Y- POT STA. 10+00.00


END CONSTRUCTION
-Y2- POT STA. 13+92.69

END CONSTRUCTION
-Y3- POT STA. 12+55.00

BEGIN TIP PROJECT BR-0042
-L- PC STA 11+54.68

MATCHLINE -L- STA 22+50
SEE SHEET EC-07



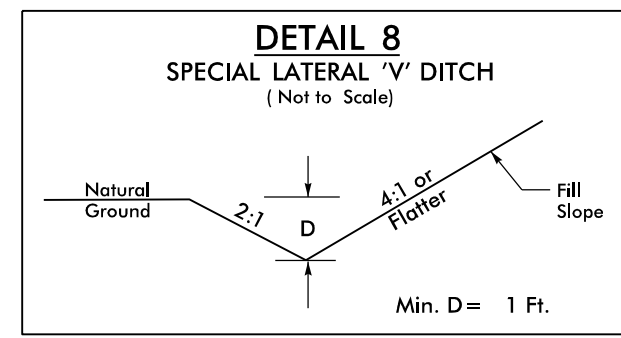
 PAVEMENT REMOVAL
FOR BRIDGE / PAVEMENT RELATIONSHIP SKETCH SEE SHEET 2B-1

FOR -L- PROFILE SEE SHEET 6
FOR -Y LT- & -Y RT- PROFILE SEE SHEET 7
FOR -Y1-, -Y2-, -Y3-, & -Y4- PROFILES SEE SHEET 8

R:\Enviro\on\design\BR0042_rou-EC-06.dgn



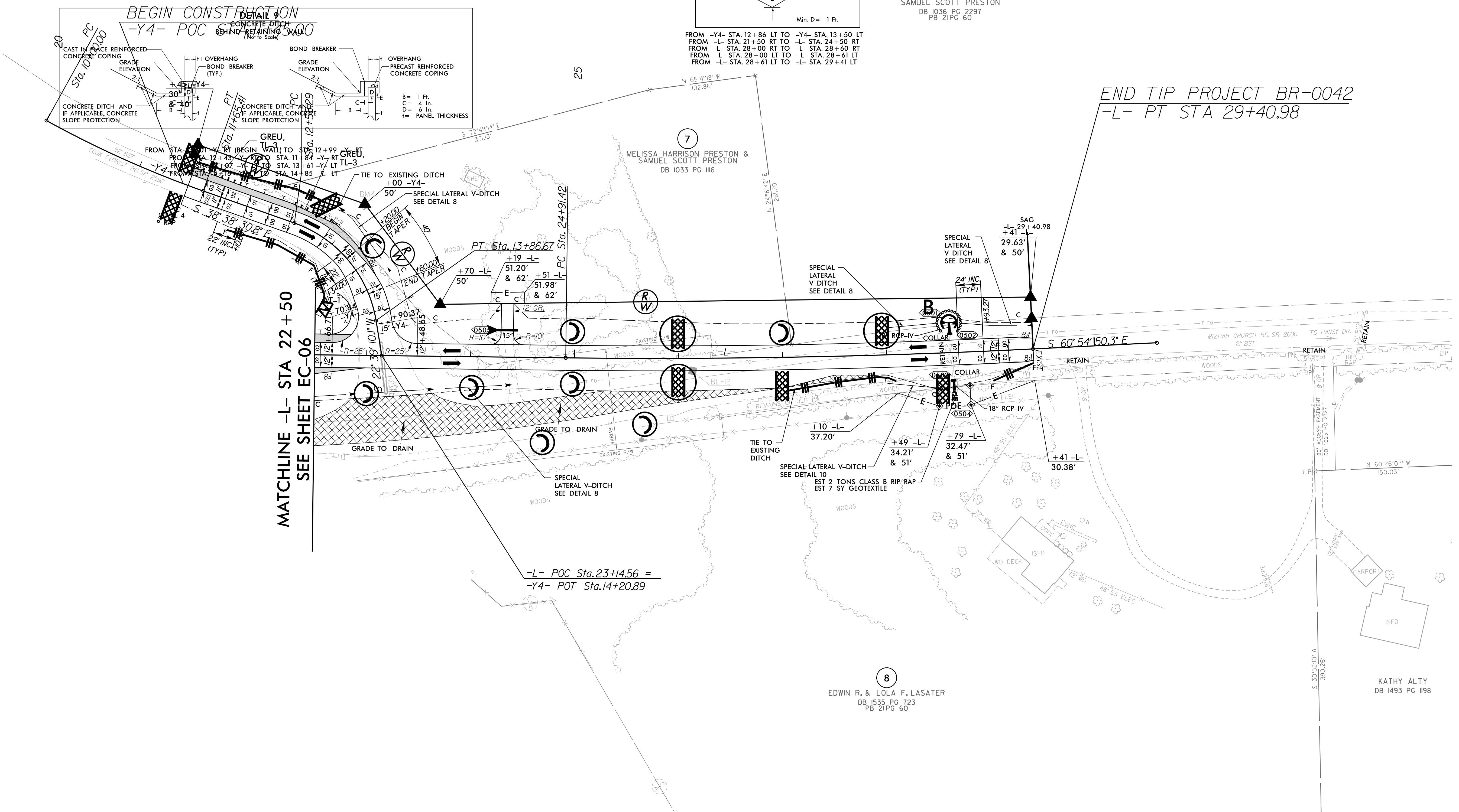
Place Matting for Erosion Control on Slope as Work Allows.
 -L- Sta. 21+00 to Sta. 22+50 LT
 -L- Sta. 21+00 to Sta. 22+00 RT



FROM -Y4- STA. 12+86 LT TO -Y4- STA. 13+50 LT
 FROM -L- STA. 21+50 RT TO -L- STA. 24+50 RT
 FROM -L- STA. 28+00 RT TO -L- STA. 28+60 RT
 FROM -L- STA. 28+00 LT TO -L- STA. 28+61 LT
 FROM -L- STA. 28+61 LT TO -L- STA. 29+41 LT

6
 MELISSA HARRISON PRESTON & SAMUEL SCOTT PRESTON
 DB 1036 PG 2297
 PB 21PG 60

END TIP PROJECT BR-0042
 -L- PT STA 29+40.98



MATCHLINE -L- STA 22+50
 SEE SHEET EC-06

-L- POC Sta. 23+14.56 =
 -Y4- POT Sta. 14+20.89

8
 EDWIN R. & LOLA F. LASATER
 DB 1535 PG 723
 PB 21PG 60

KATHY ALTY
 DB 1493 PG 1198

FOR -L- PROFILE SEE SHEET 6
 FOR -Y4- PROFILES SEE SHEET 8



5/14/99
 R:\Enviro-07\Design\BR0042_reu-EC-07.dgn
 2:17:19 PM
 R:\Enviro-07\Design\BR0042_reu-EC-07.dgn