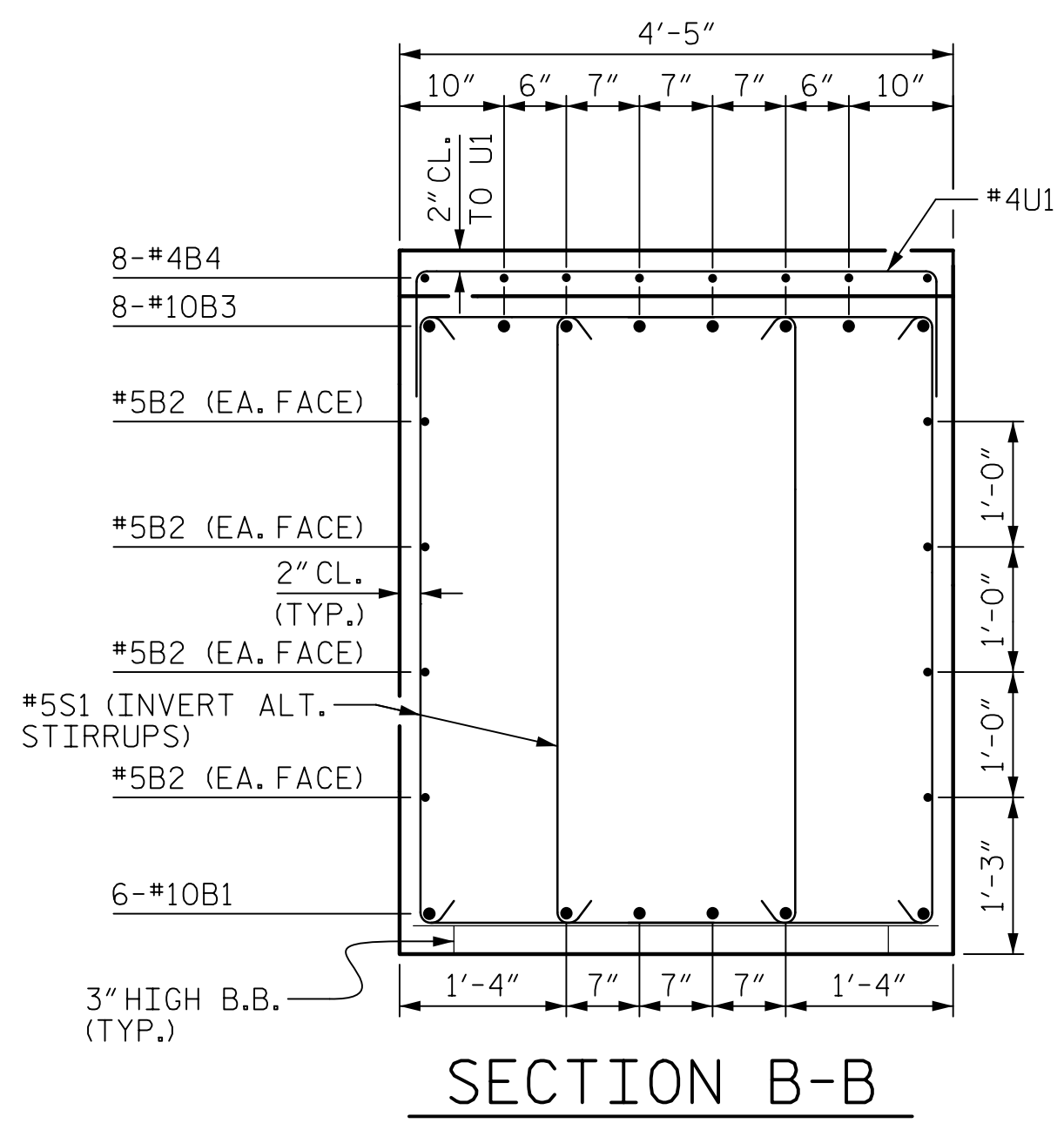
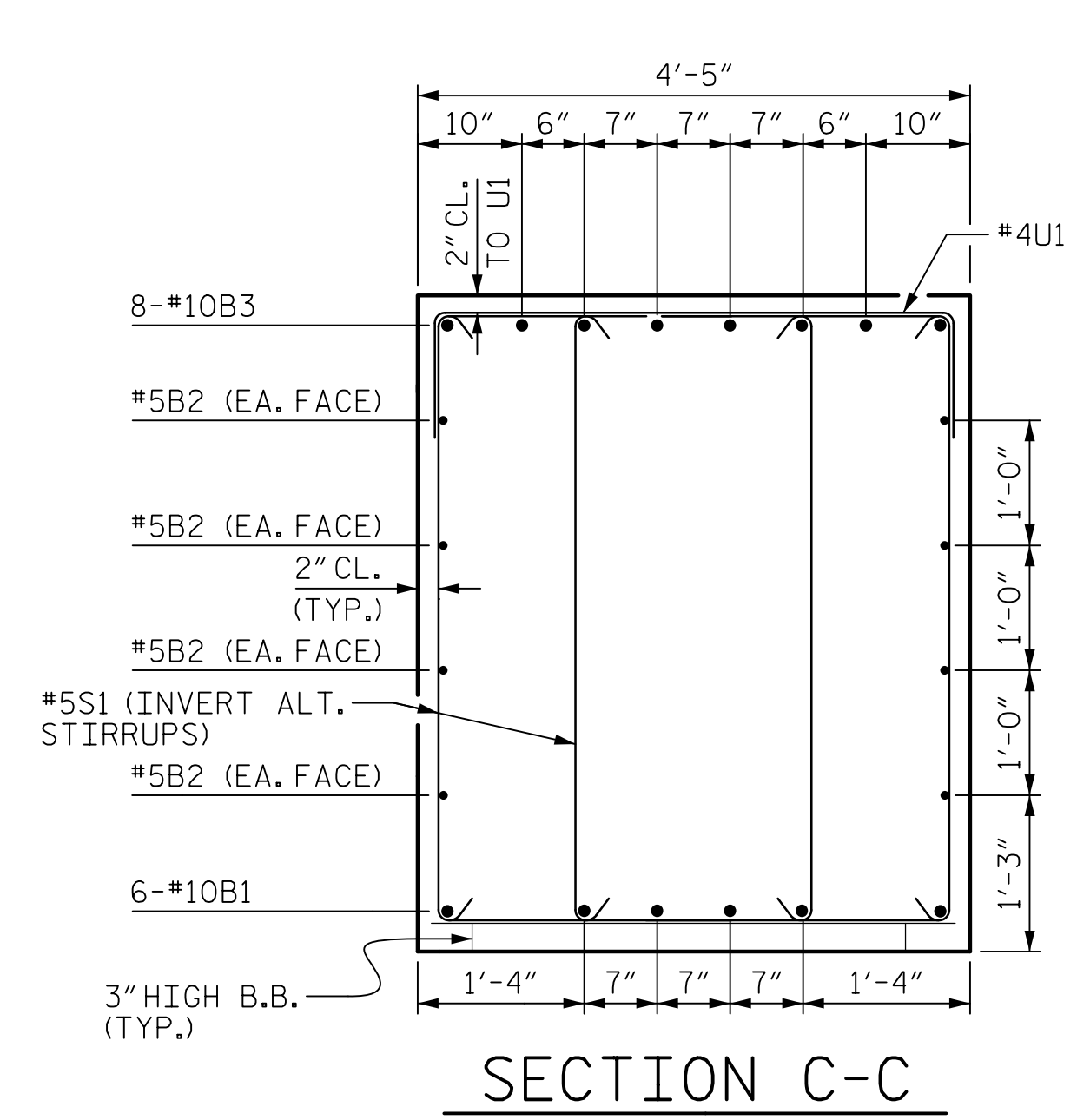


DATE: 5/27/2020  
TIME: 12:57:47 PM

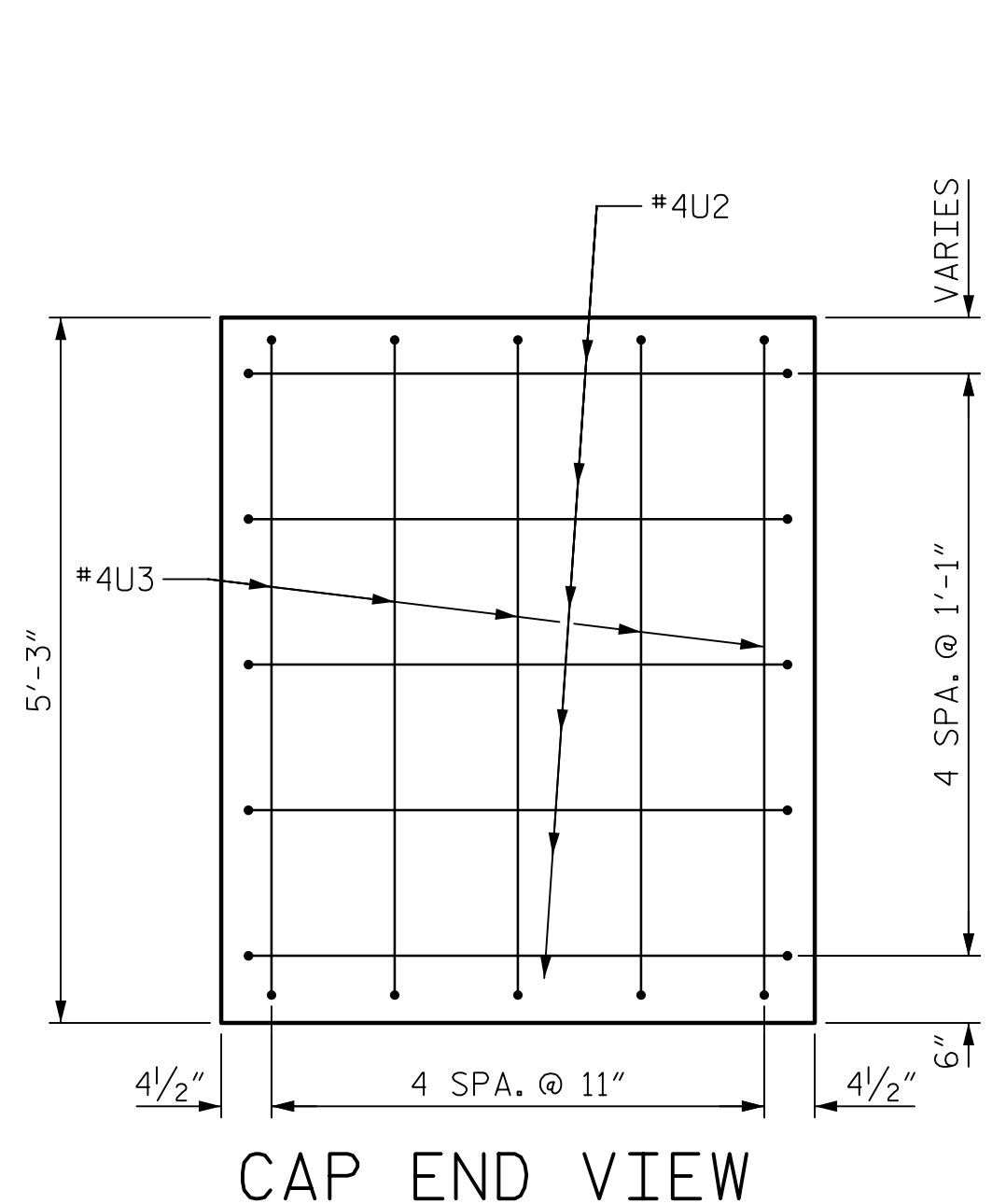
USER: nusrat@p001\Users\nusrat\p001\Projects\60571086 - BR-0042\Bridg CAD\5151910\_CAD\VO\_NCDOT\_TIP\Structures\04 Drawings\600-43\_S22\_BR-0042\_SMU\_BTL\_2.dgn



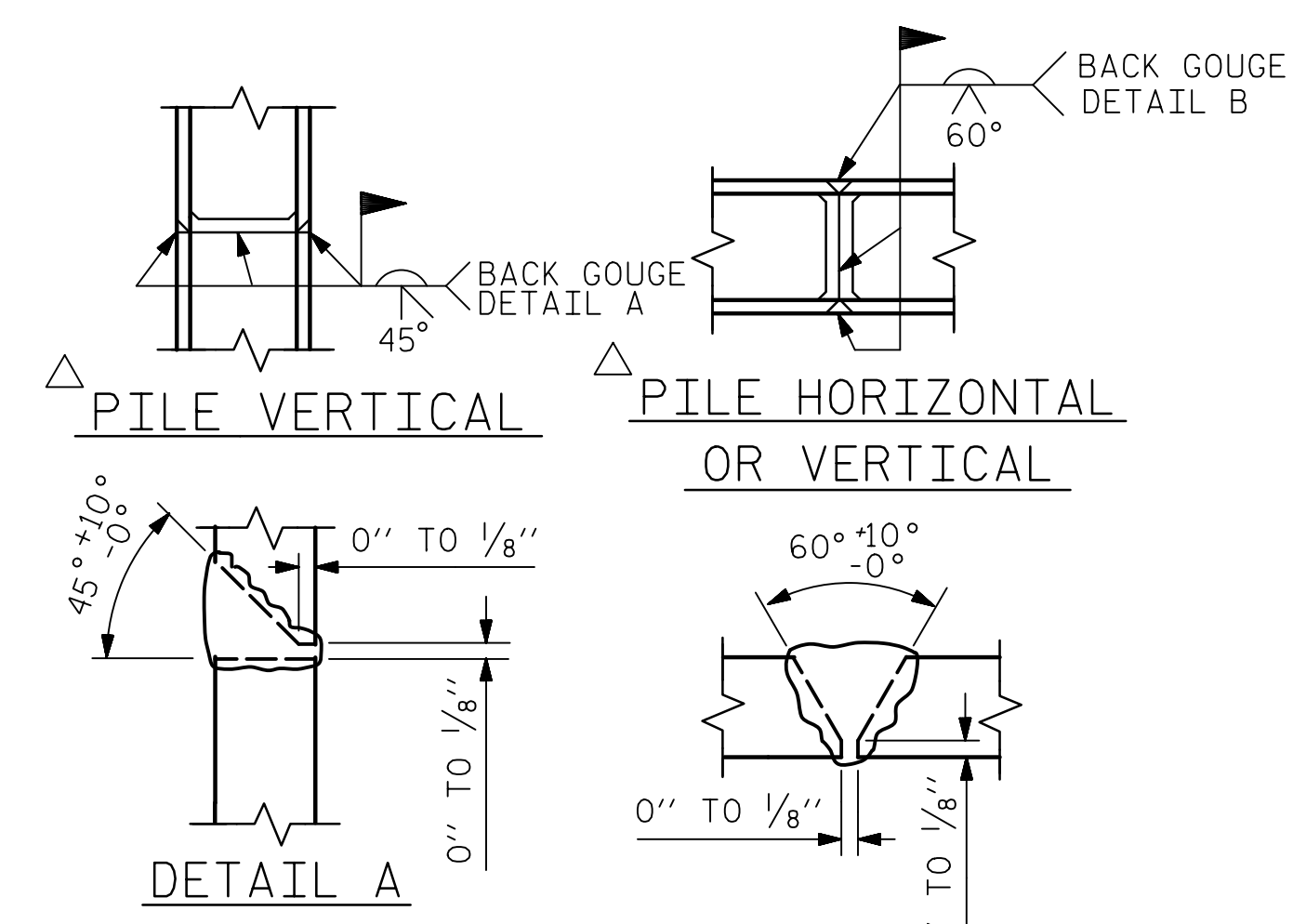
SECTION B-B



SECTION C-C

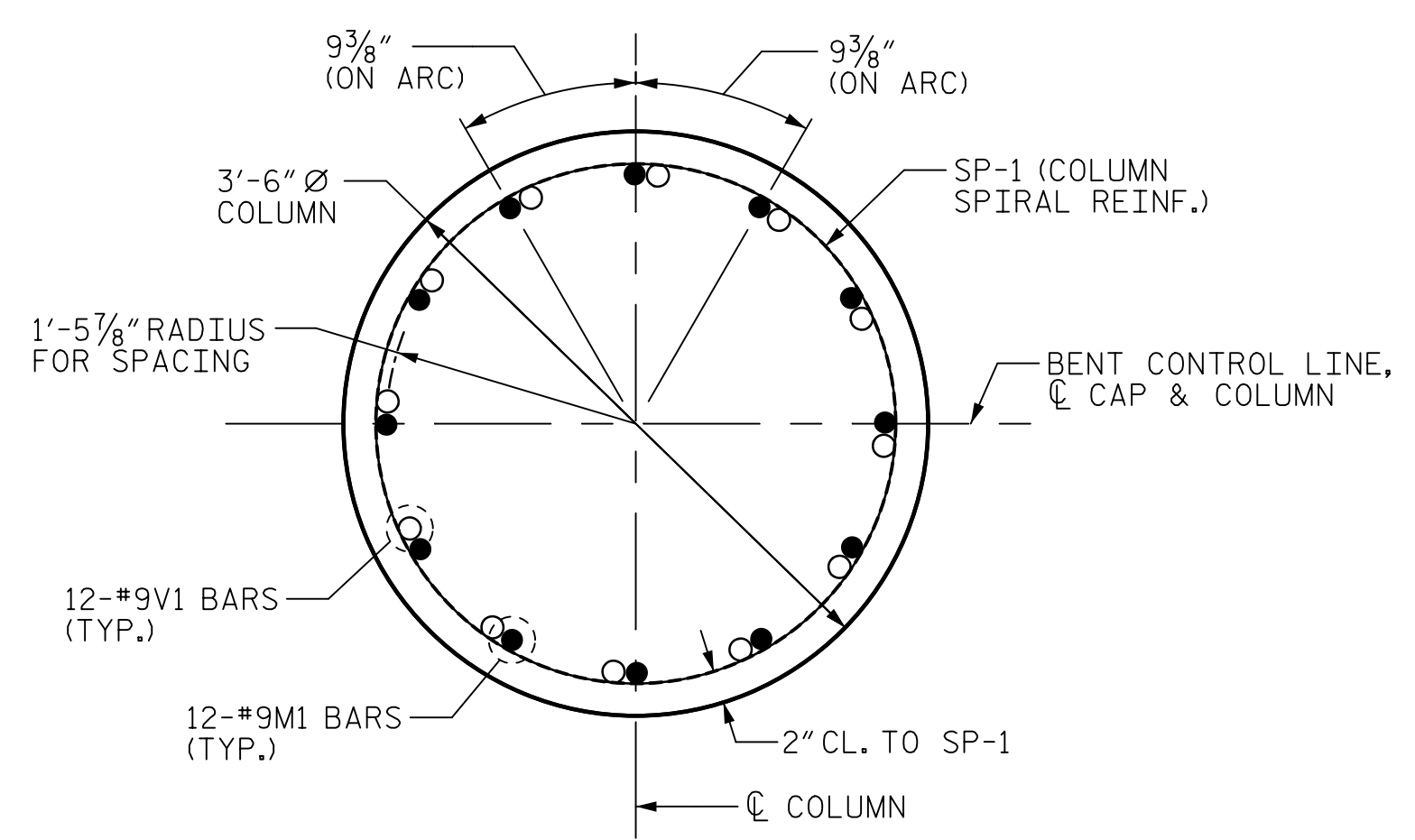


CAP END VIEW

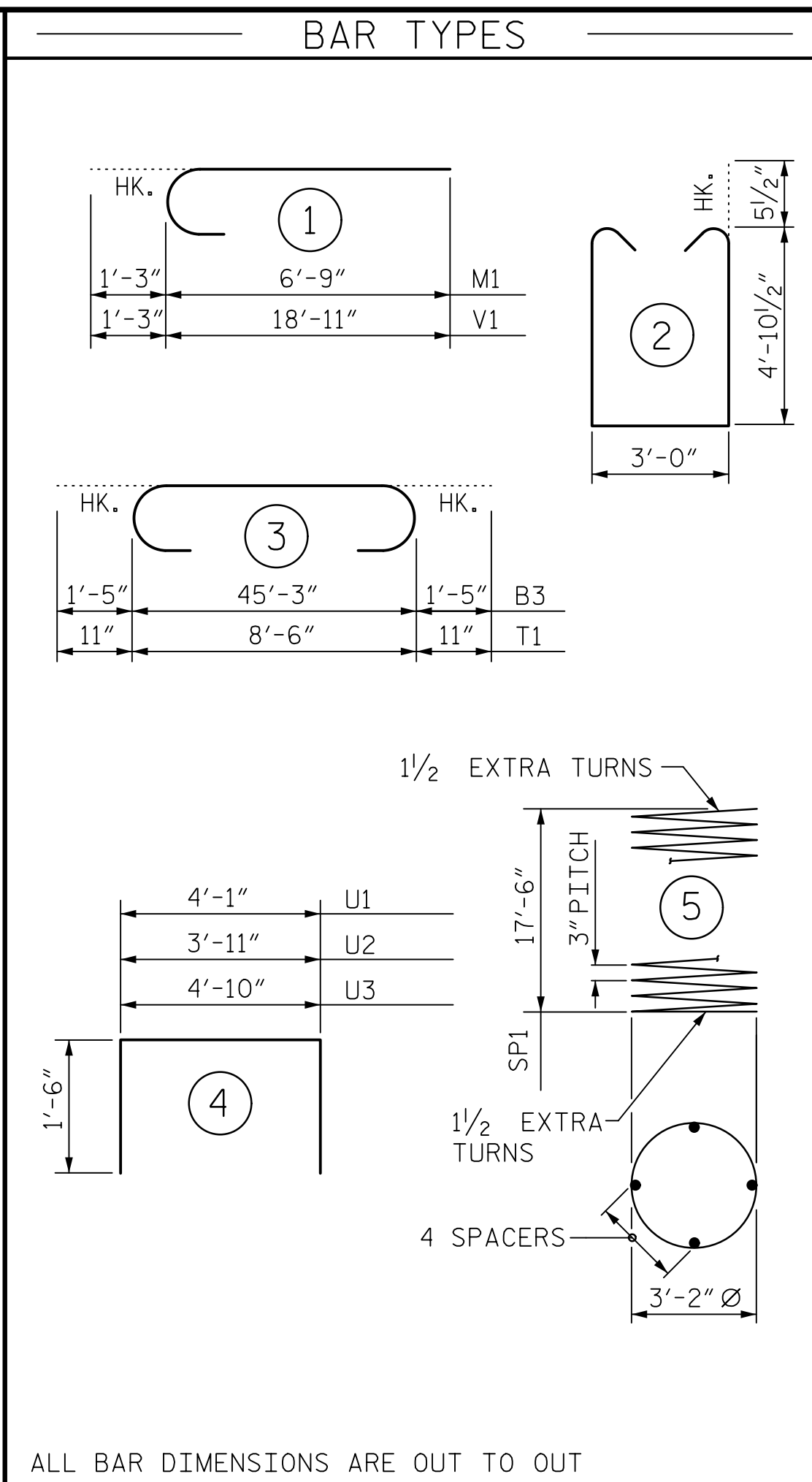


PILE SPLICE DETAILS

POSITION OF PILE DURING WELDING.

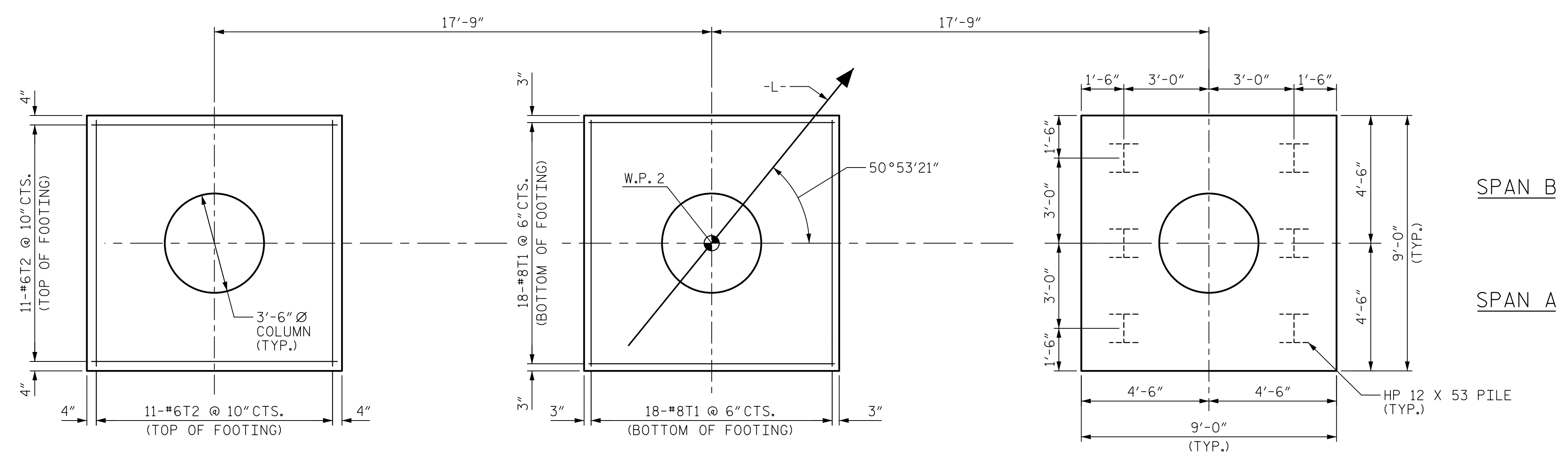


SECTION THRU COLUMN



ALL BAR DIMENSIONS ARE OUT TO OUT

BILL OF MATERIAL					
BAR	No.	SIZE	TYPE	LENGTH	WEIGHT
B1	6	10	STR	45'-3"	1168
B2	8	5	STR	45'-3"	378
B3	8	10	3	48'-1"	1655
B4	8	4	STR	17'-11"	96
M1	36	9	1	8'-0"	979
S1	116	5	2	13'-8"	1654
T1	108	8	3	10'-4"	2980
T2	66	6	STR	8'-6"	843
U1	42	4	4	7'-1"	199
U2	10	4	4	6'-11"	46
U3	10	4	4	7'-10"	52
V1	36	9	1	20'-2"	2468
REINFORCING STEEL					12,518 LBS.
SP-1	3	*	5	716'-11"	1437
SPIRAL COLUMN REINFORCING STEEL					1437 LBS.
* THE SP-1 SPIRAL REINFORCING STEEL SHALL BE W20 OR D-20 COLD DRAWN WIRE OR #4 PLAIN OR DEFORMED BAR					
CLASS A CONCRETE BREAKDOWN					
POUR #1 (FOOTINGS)					31.5 C.Y.
POUR #2 (COLUMNS)					18.4 C.Y.
POUR #3 (CAP)					40.9 C.Y.
TOTAL CLASS A CONCRETE					90.9 C.Y.
HP 12 X 53 STEEL PILES					
NO. = 18					720 LIN. FT.
PILE DRIVING EQUIPMENT SETUP					
NO. = 18					



PLAN OF FOOTINGS & COLUMNS

PROJECT NO. BR-0042  
ROCKINGHAM COUNTY  
STATION: 19+56.99 -L-

SHEET 2 OF 2

**AECOM**  
AECOM TECHNICAL SERVICES OF NC, INC.  
701 CORPORATE CENTER DRIVE, SUITE 475  
RALEIGH, NC 27607  
(919) 854-6200 www.aecom.com  
AECOM License No. F-0342

Designed by:  
**John C. Morrison**  
NORTH CAROLINA PROFESSIONAL ENGINEER  
SEAL 030474  
JOHN C. MORRISON  
5/27/2020

STATE OF NORTH CAROLINA DEPARTMENT OF TRANSPORTATION RALEIGH					
SUBSTRUCTURE					
BENT 1					
REVISIONS					
NO.	BY:	DATE:	NO.	BY:	DATE:
1			3		
2			4		

SHEET NO. S-22  
TOTAL SHEETS 28

DOCUMENT NOT CONSIDERED FINAL UNLESS ALL SIGNATURES COMPLETED

DRAWN BY: H.T. ROSEMOND DATE: 07/2019  
CHECKED BY: J.C. MORRISON DATE: 07/2019  
DESIGNED BY: D. RITACCO DATE: 07/2019  
DESIGN CHECKED BY: J.C. MORRISON DATE: 07/2019