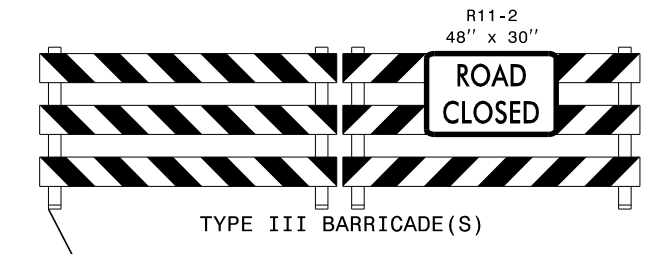
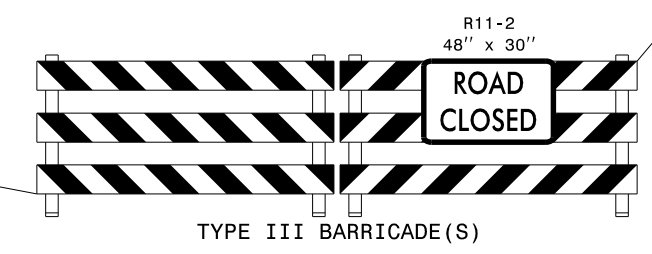
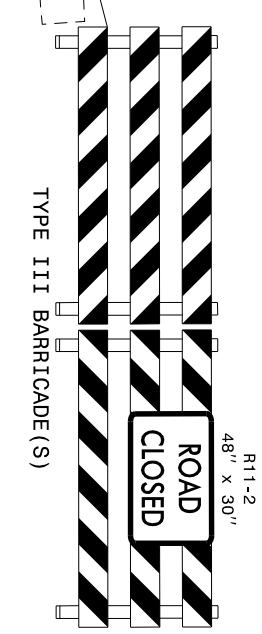
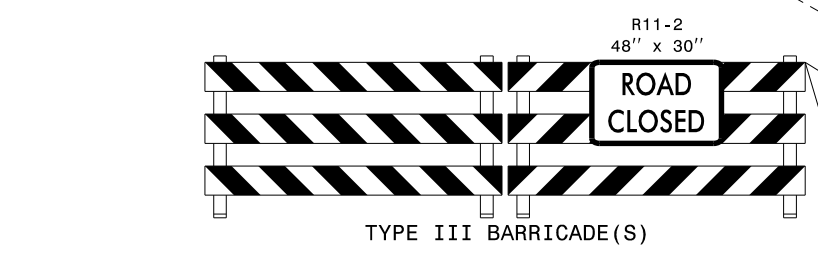
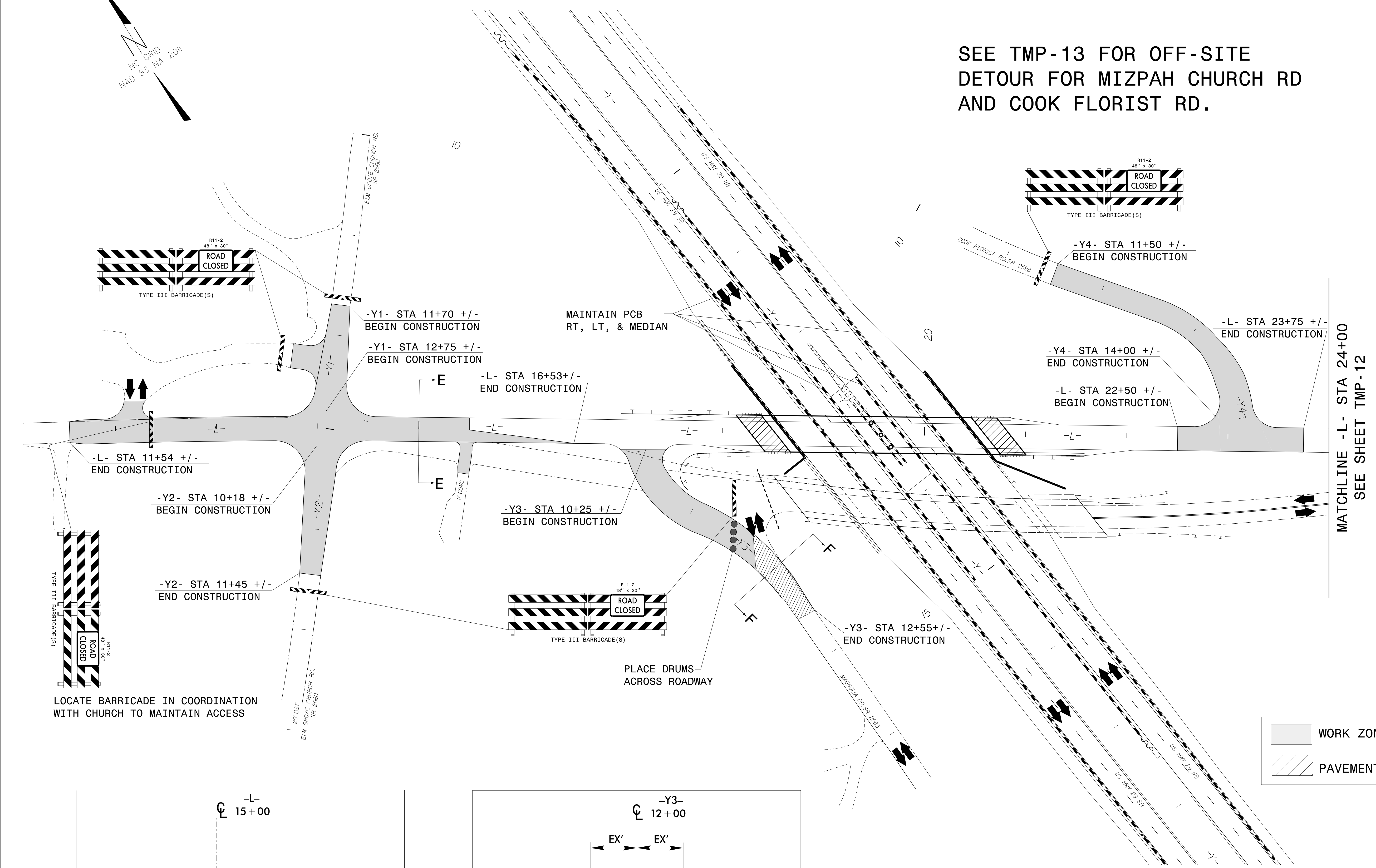




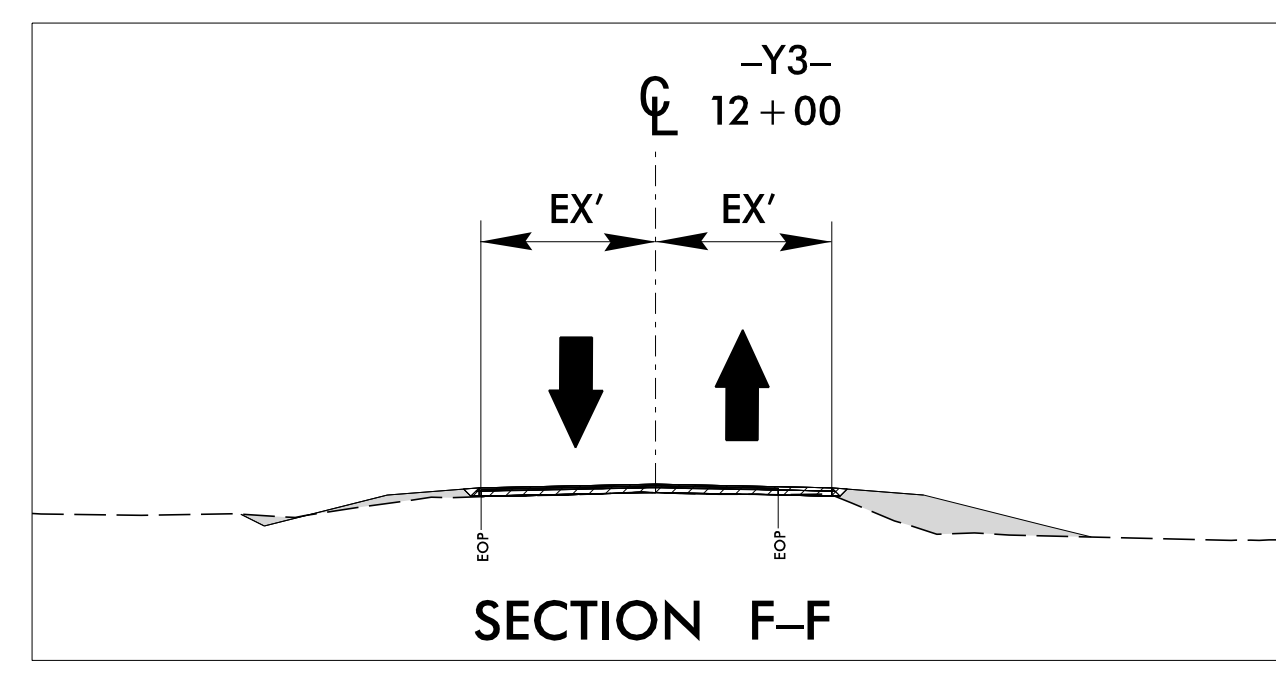
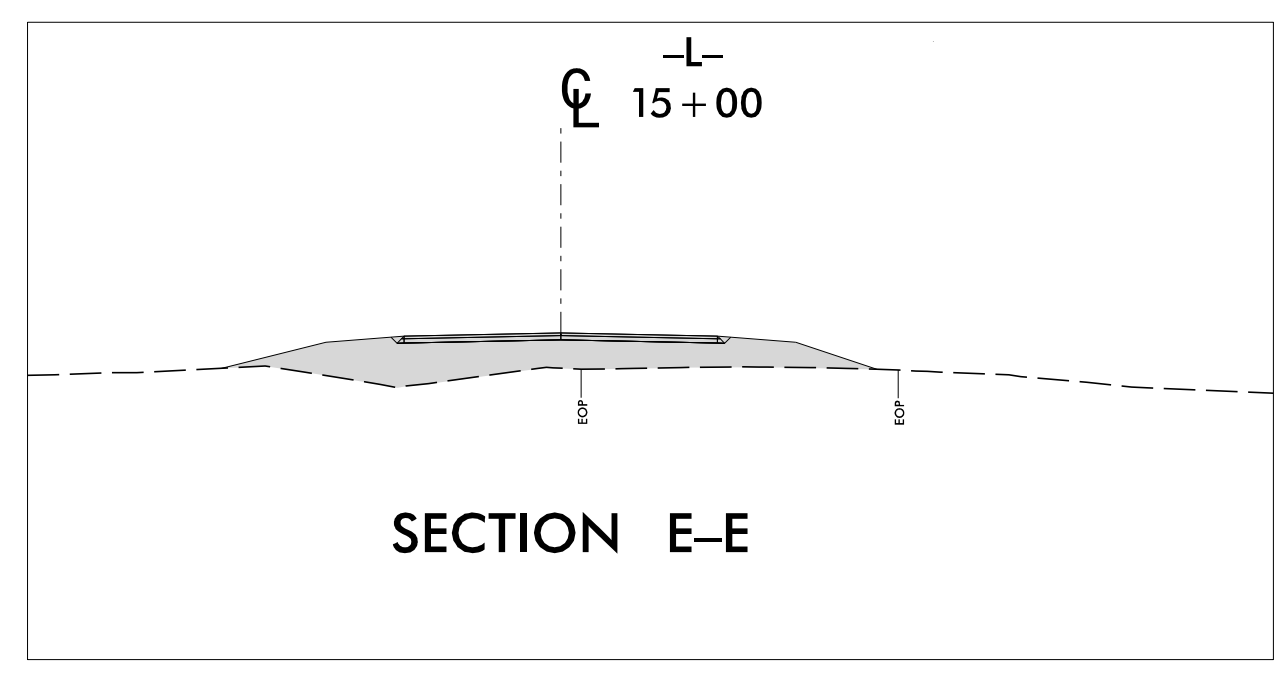
SEE TMP-13 FOR OFF-SITE
DETOUR FOR MIZPAH CHURCH RD
AND COOK FLORIST RD.



LOCATE BARRICADE IN COORDINATION
WITH CHURCH TO MAINTAIN ACCESS

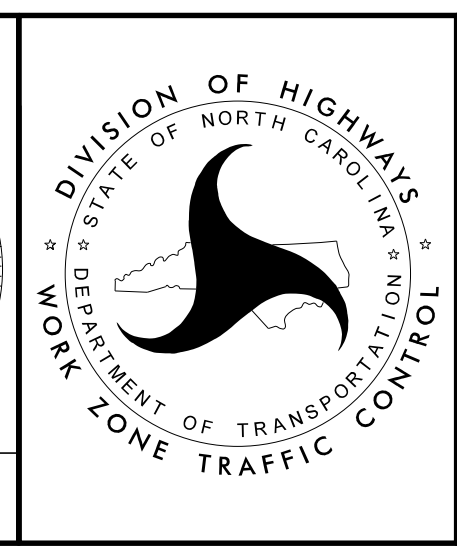
PLACE DRUMS
ACROSS ROADWAY

	WORK ZONE
	PAVEMENT OVERLAY



APPROVED: *Jeffrey A. Koontz*
DATE: 5/28/2020

DocuSigned by:
Jeffrey A. Koontz
B4EBFECCD2384F7



PHASE III DETAILS

5/28/2020
R:\TrafficControl\TC_TMP_PSH_IL\Phase III.dgn
User:jeff.koontz