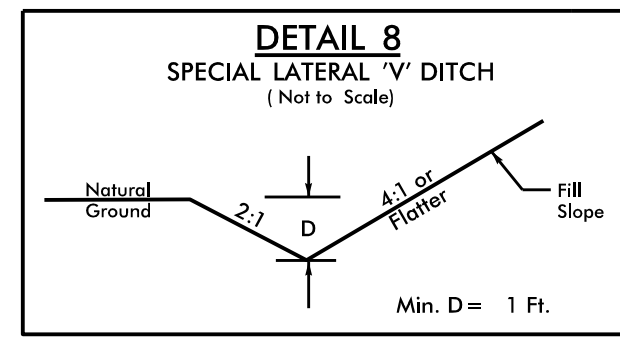


PROJECT REFERENCE NO. BR-0042	SHEET NO. 5
RW SHEET NO.	
ROADWAY DESIGN ENGINEER 2/9/2021	HYDRAULICS ENGINEER 2/9/2021
Prepared in the Office of: AECOM NC FIRM LICENSE No. F-0342 701 Corporate Center Drive, Suite 415 Raleigh, NC 27607 (919) 854-6200 • (919) 854-6259 (Fax)	
DOCUMENT NOT CONSIDERED FINAL UNLESS ALL SIGNATURES COMPLETED	

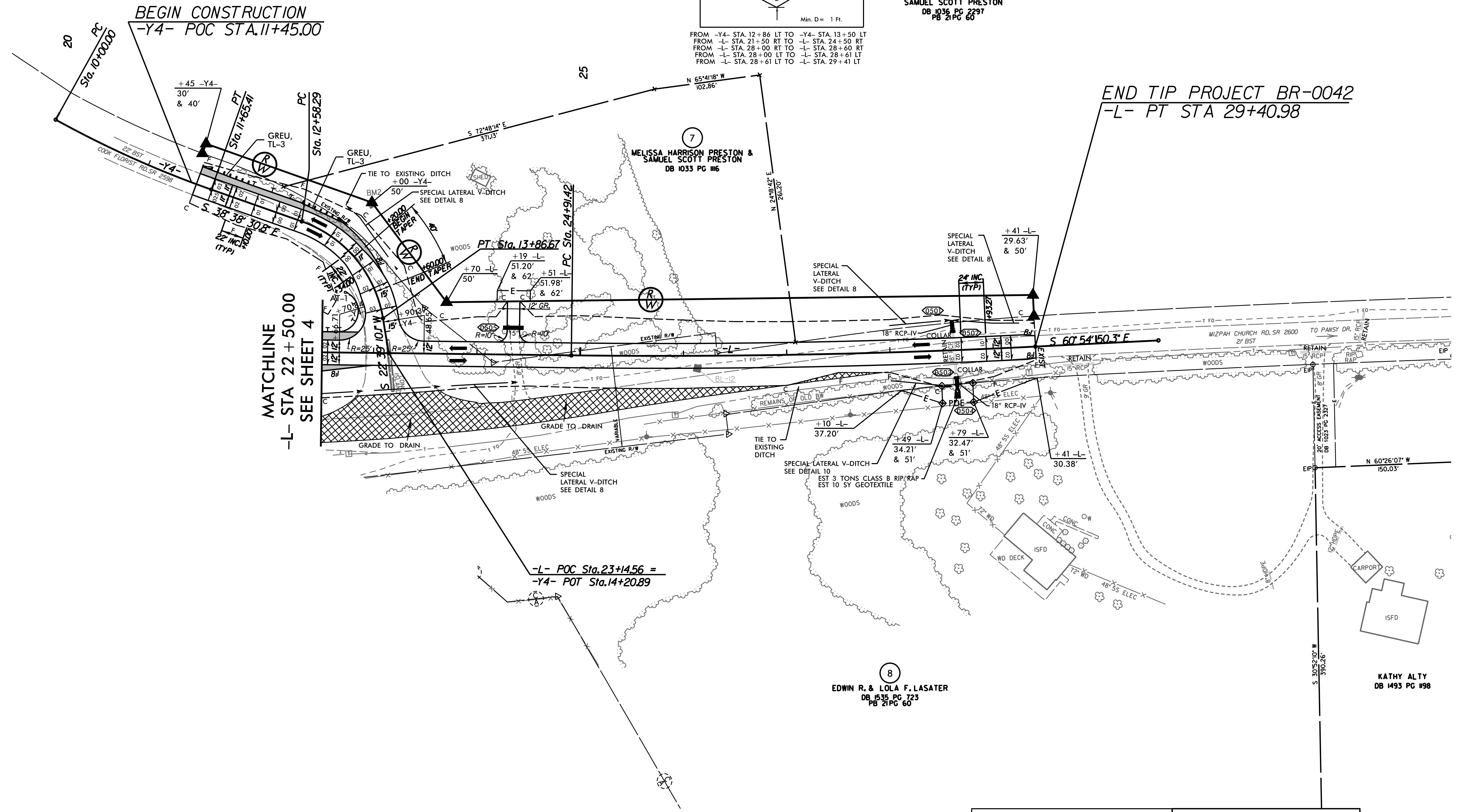
-L-	-Y4-	-Y4-
PI Sta 27+16.22	PI Sta 10+82.90	PI Sta 13+29.39
$\Delta = 3^{\circ} 34' 00.39" (LT)$	$\Delta = 9^{\circ} 35' 31.66" (LT)$	$\Delta = 6^{\circ} 17' 40.9" (RT)$
D = 0' 47' 36.9"	D = 5' 47' 55.90"	D = 47' 44' 47.3"
L = 449.46'	L = 165.41'	L = 128.38'
T = 224.80'	T = 82.90'	T = 71.00'
R = 7,220.00'	R = 988.05'	R = 120.00'
e = NC	e = SEE PLANS	e = SEE PLANS
	R.O. = SEE PLANS	R.O. = SEE PLANS



FROM -Y4- STA. 12+86 LT TO -Y4- STA. 13+50 LT
 FROM -L- STA. 21+50 RT TO -L- STA. 24+50 RT
 FROM -L- STA. 28+00 RT TO -L- STA. 28+60 RT
 FROM -L- STA. 28+00 LT TO -L- STA. 28+61 LT
 FROM -L- STA. 28+61 LT TO -L- STA. 29+41 LT

6
MELISSA HARRISON PRESTON & SAMUEL SCOTT PRESTON
 DB 1036 PG 2297
 PB 21 PG 60

END TIP PROJECT BR-0042
 -L- PT STA 29+40.98



-L- POC Sta. 23+14.56 =
 -Y4- POT Sta. 14+20.89

8
EDWIN R. & LOLA F. LASATER
 DB 1535 PG 723
 PB 21 PG 60

KATHY ALTY
 DB 1493 PG 198

FOR TRANSPORTATION MANAGEMENT PLAN AND TEMPORARY SHORING DETAILS SEE SHEETS TMP-1 THROUGH TMP-17

FOR -L- PROFILE SEE SHEET 6
 FOR -Y4- PROFILES SEE SHEET 8

PAVEMENT REMOVAL

REVISIONS

5/14/1999

5/27/2020
 R:\Projects\BR0042\BR0042_rdy_psh05.dgn