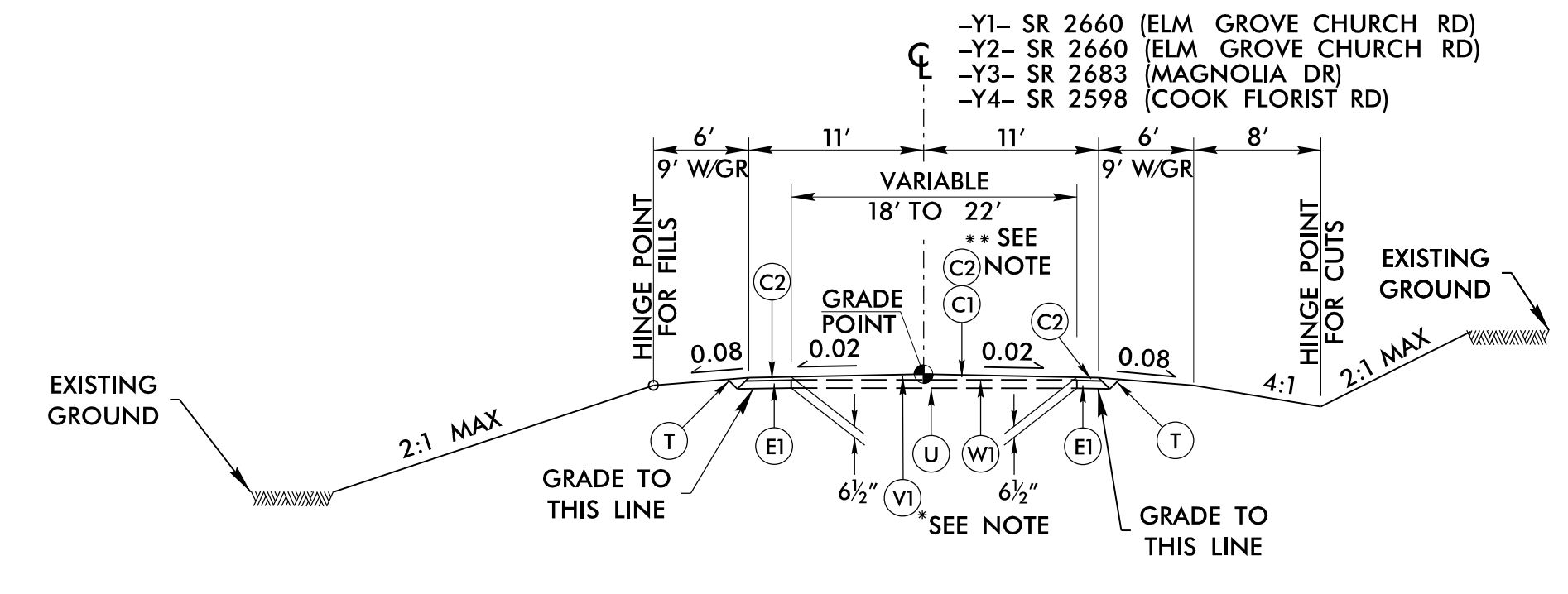


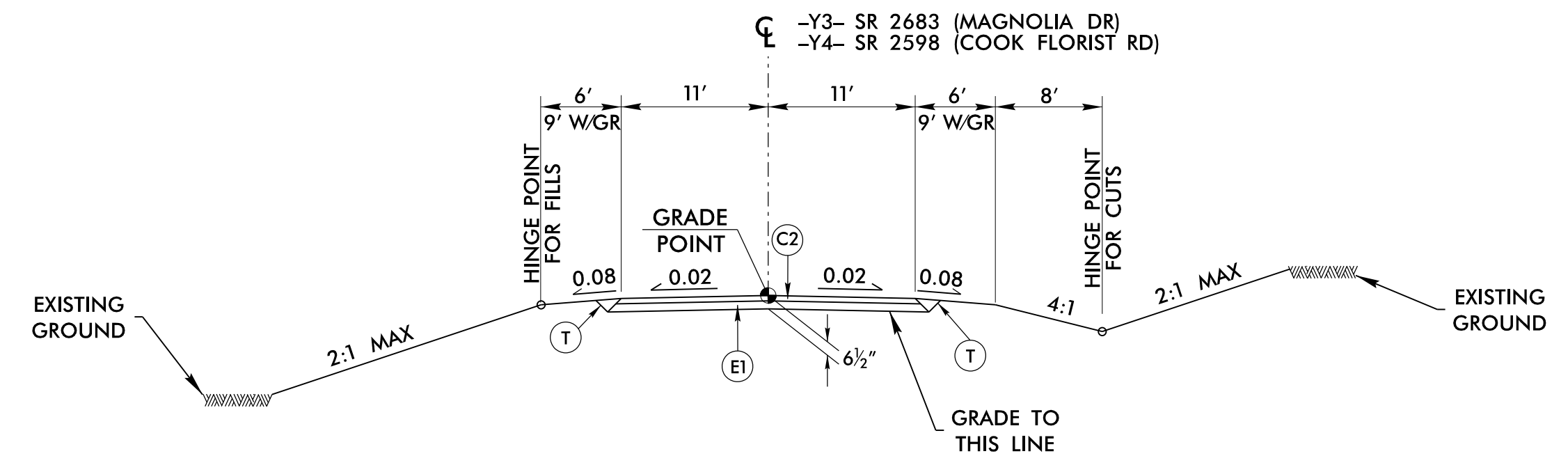
PROJECT REFERENCE NO. <i>BR-0042</i>	SHEET NO. <i>2A-4</i>
ROADWAY DESIGN ENGINEER 5/29/2020 <i>Timothy A. Klotz</i>	PAVEMENT DESIGN ENGINEER 5/29/2020 <i>Clark S. Morrison</i>
<p>DOCUMENT NOT CONSIDERED FINAL UNLESS ALL SIGNATURES COMPLETED</p>	



TYPICAL SECTION NO. 5

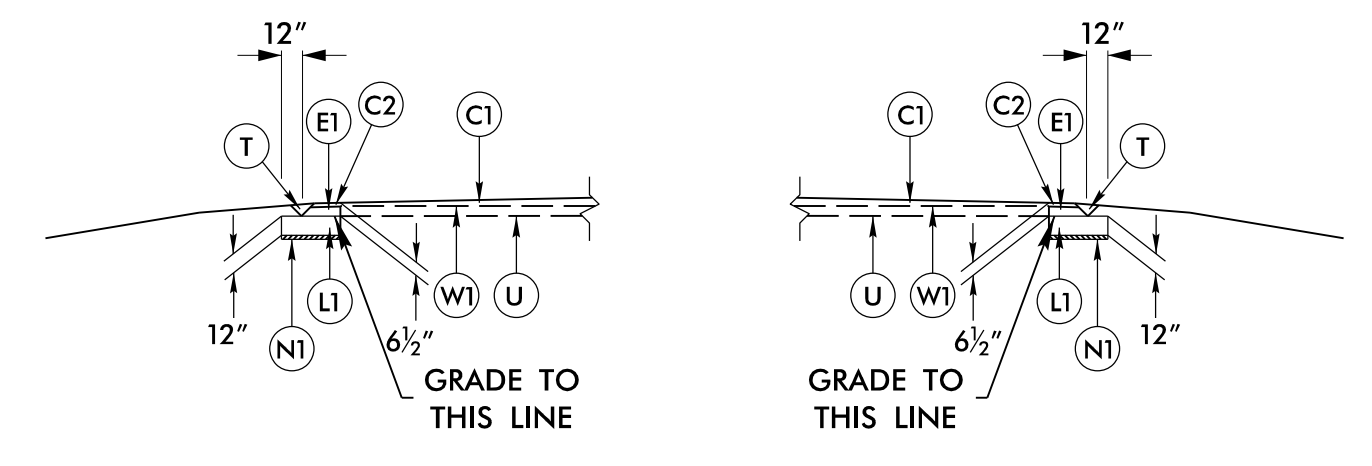
USE TYPICAL SECTION NO. 5
 -Y1- STA. 11+70.00 TO -Y1- STA. 12+80.97
 -Y2- STA. 10+12.08 TO -Y2- STA. 11+45.00
 -Y3- STA. 11+20.23 TO -Y3- STA. 12+55.00
 -Y4- STA. 11+50.00 TO -Y4- STA. 12+68.00

* V1 NOTE: MILLING ONLY ON -Y4-
 ** C2 ON -Y4- ONLY



TYPICAL SECTION NO. 6

USE TYPICAL SECTION NO. 6
 -Y3- STA. 10+18.54 TO -Y3- STA. 11+20.23
 -Y4- STA. 12+68.00 TO -Y4- STA. 14+08.71



AGGREGATE SUBGRADE DETAIL

USE IN CONJUNCTION WITH TYPICAL SECTIONS AS DIRECTED BY THE RESIDENT ENGINEER AND AT STATIONS:
 -Y1- STA. 11+85.00 TO -Y1- STA. 12+81.00
 -Y2- STA. 10+75.00 TO -Y2- STA. 11+25.00

C1	1 1/4" S9.5B
C2	2 1/2" S9.5B
C3	VAR. S9.5B
C4	1 1/2" S9.5C
C5	3" S9.5C
C6	VAR. S9.5C
D1	4.0" I19.0C
D2	VAR. I19.0C
E1	4.0" B25.0C
E2	8.5" B25.0C
E3	VAR. B25.0C
L1	CLASS IV SUBGRADE STAB.
N1	GEOTEXT. FOR SOIL STAB.
R1	PRECAST CONC. BARRIER
R2	EXPRESSWAY GUTTER
R3	SHOULDER BERM GUTTER
T	EARTH MATERIAL
U	EXISTING PAVEMENT
V1	2.5" ASPHALT MILLING
V2	RUMBLE STRIPS
V3	INCIDENTAL MILLING
W1	WEDGING DET. #1
W2	WEDGING DET. #2