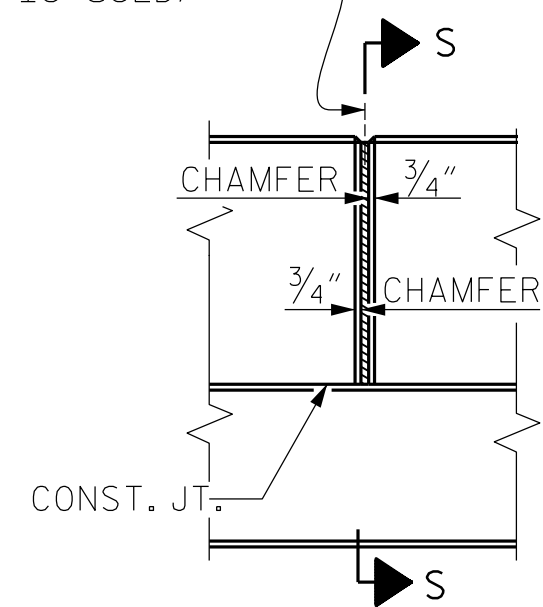
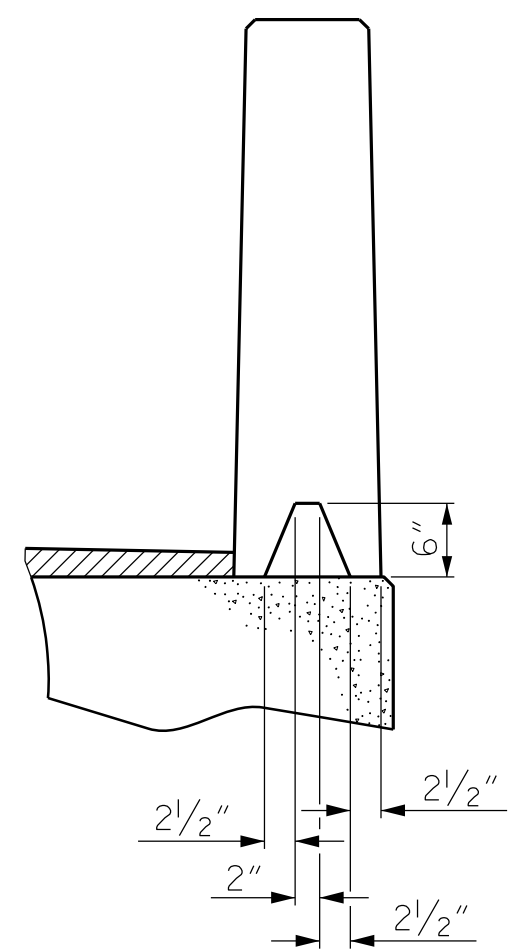


SECTION THRU RAIL

① 1/2" EXP. JT. MAT'L HELD IN PLACE WITH GALVANIZED NAILS. (NOTE: OMIT EXP. JT. MAT'L. WHEN SLIP FORM IS USED)



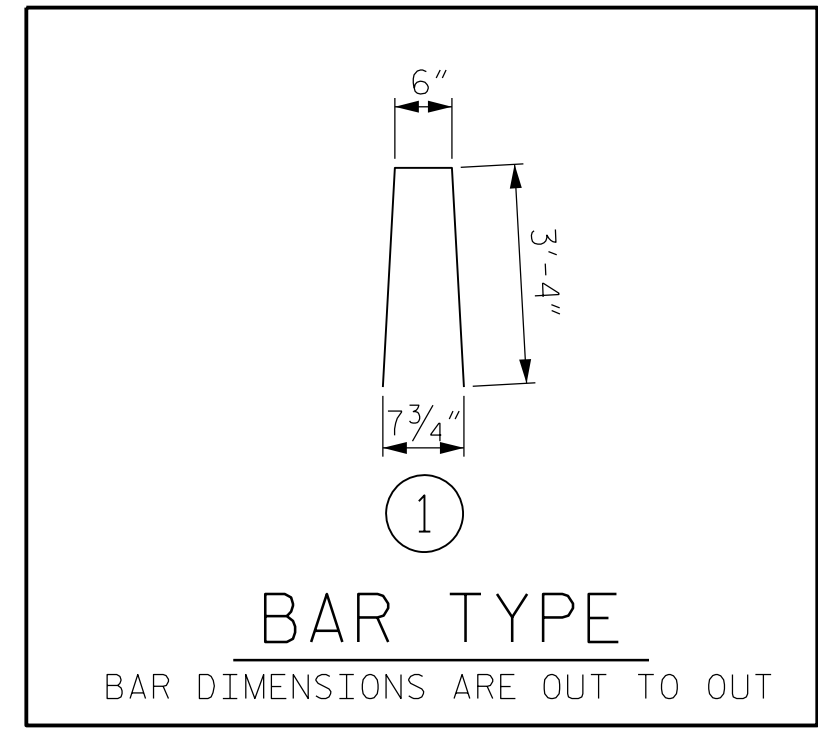
ELEVATION AT EXPANSION JOINTS



SECTION S-S
AT DAM IN OPEN JOINT
(THIS IS TO BE USED ONLY WHEN SLIP FORM IS USED)

GUTTERLINE ASPHALT THICKNESS & RAIL HEIGHT		
	ASPHALT OVERLAY THICKNESS @ MID-SPAN	RAIL HEIGHT @ MID-SPAN
90' UNITS	1 1/2"	3'-7 1/2"

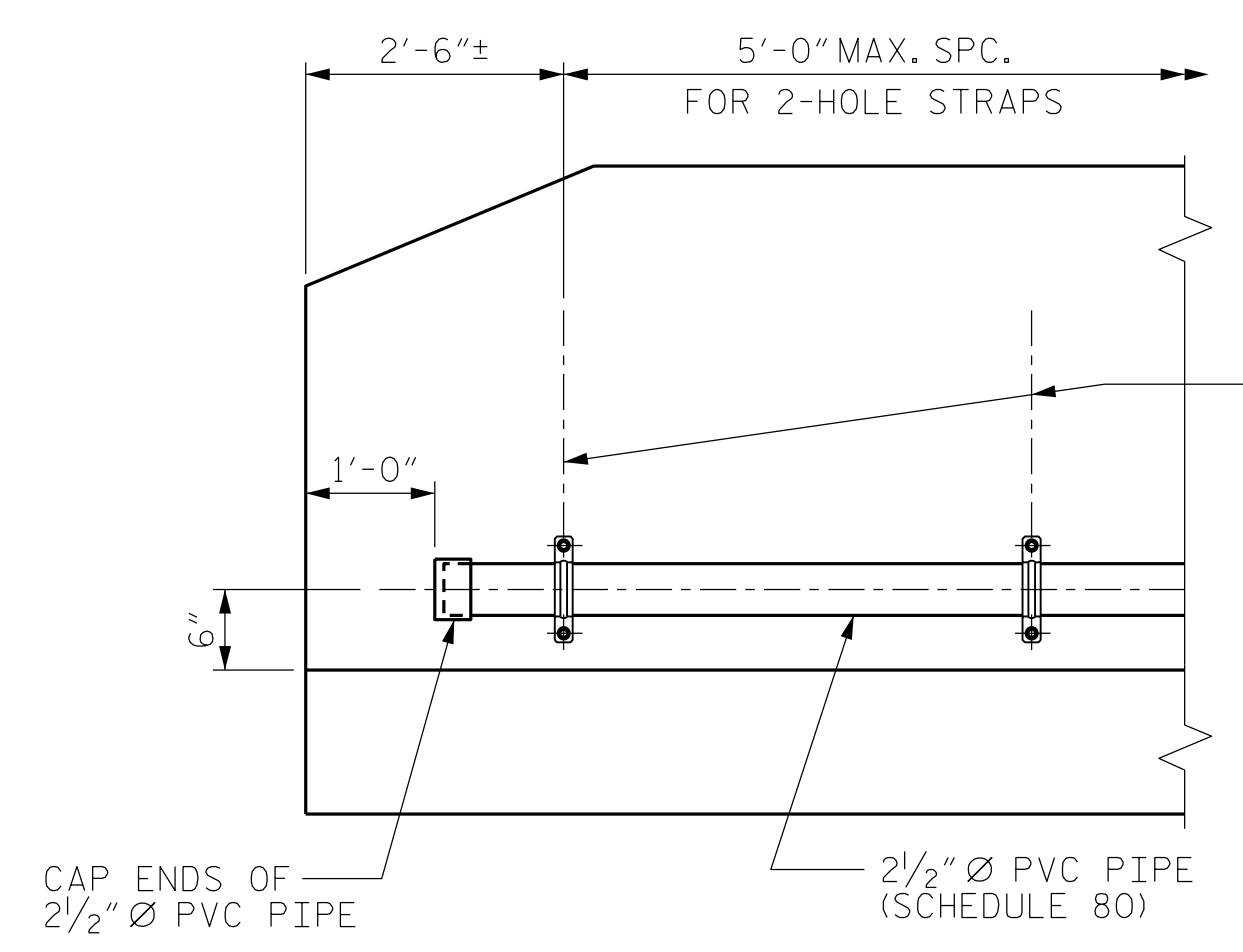
BOX BEAM UNITS REQUIRED			
	NUMBER	LENGTH	TOTAL LENGTH
EXTERIOR B.B.	2	90'-0"	180'-0"
INTERIOR B.B.	9	90'-0"	810'-0"
TOTAL	11		990'-0"



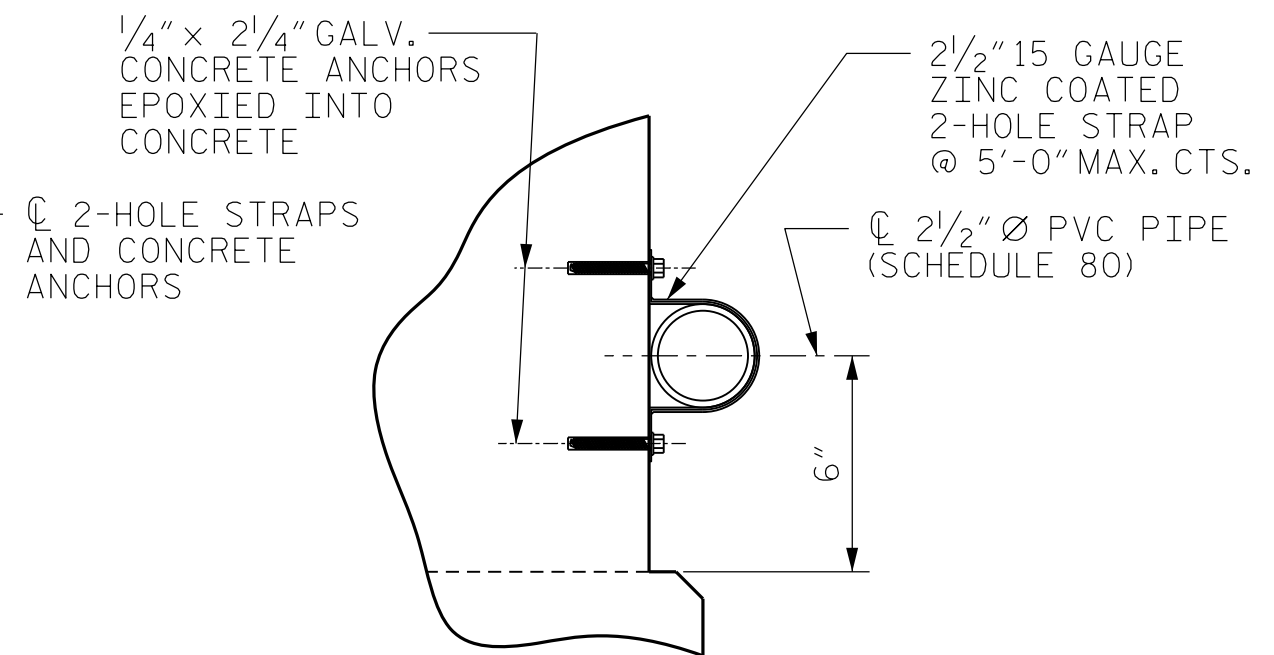
BAR TYPE
BAR DIMENSIONS ARE OUT TO OUT

BILL OF MATERIAL FOR VERTICAL CONCRETE BARRIER RAIL					
BAR	BARS PER PAIR OF EXTERIOR UNITS	SIZE	TYPE	LENGTH	WEIGHT
90' UNIT					
*B10	96	#5	STR	22'-1"	2211
*S6	252	#5	1	7'-2"	1884
* EPOXY COATED REINFORCING STEEL				LBS.	4095
CLASS AA CONCRETE				CU.YDS.	23.3
TOTAL VERTICAL CONCRETE BARRIER RAIL				LN.FT.	180.0

VERTICAL CONCRETE BARRIER RAIL DETAILS



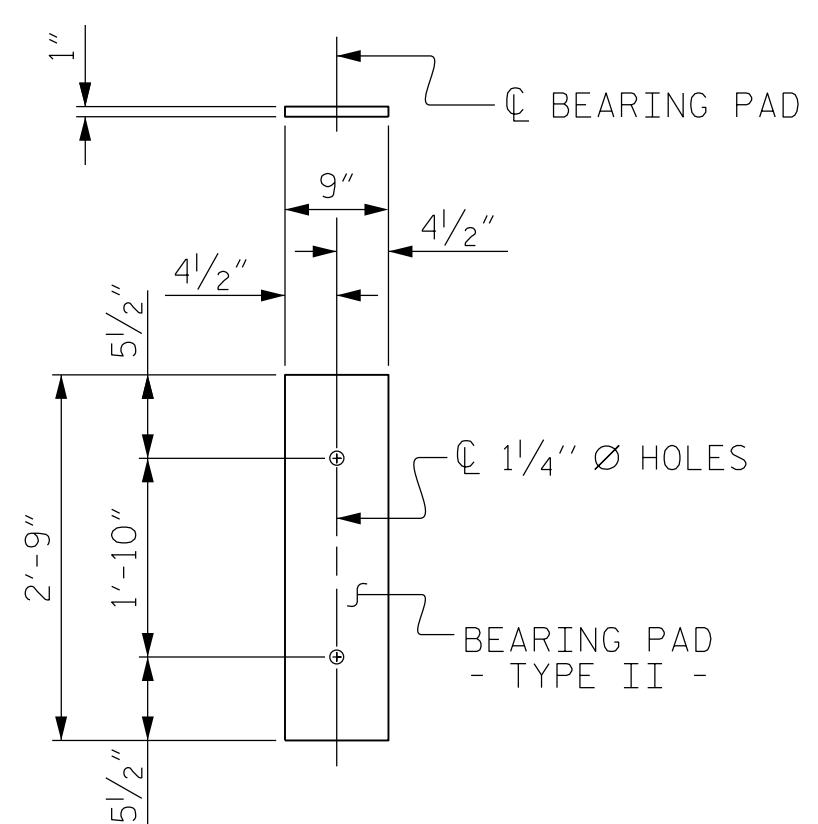
ELEVATION



SECTION

FIBER OPTIC CONDUIT SYSTEM DETAILS

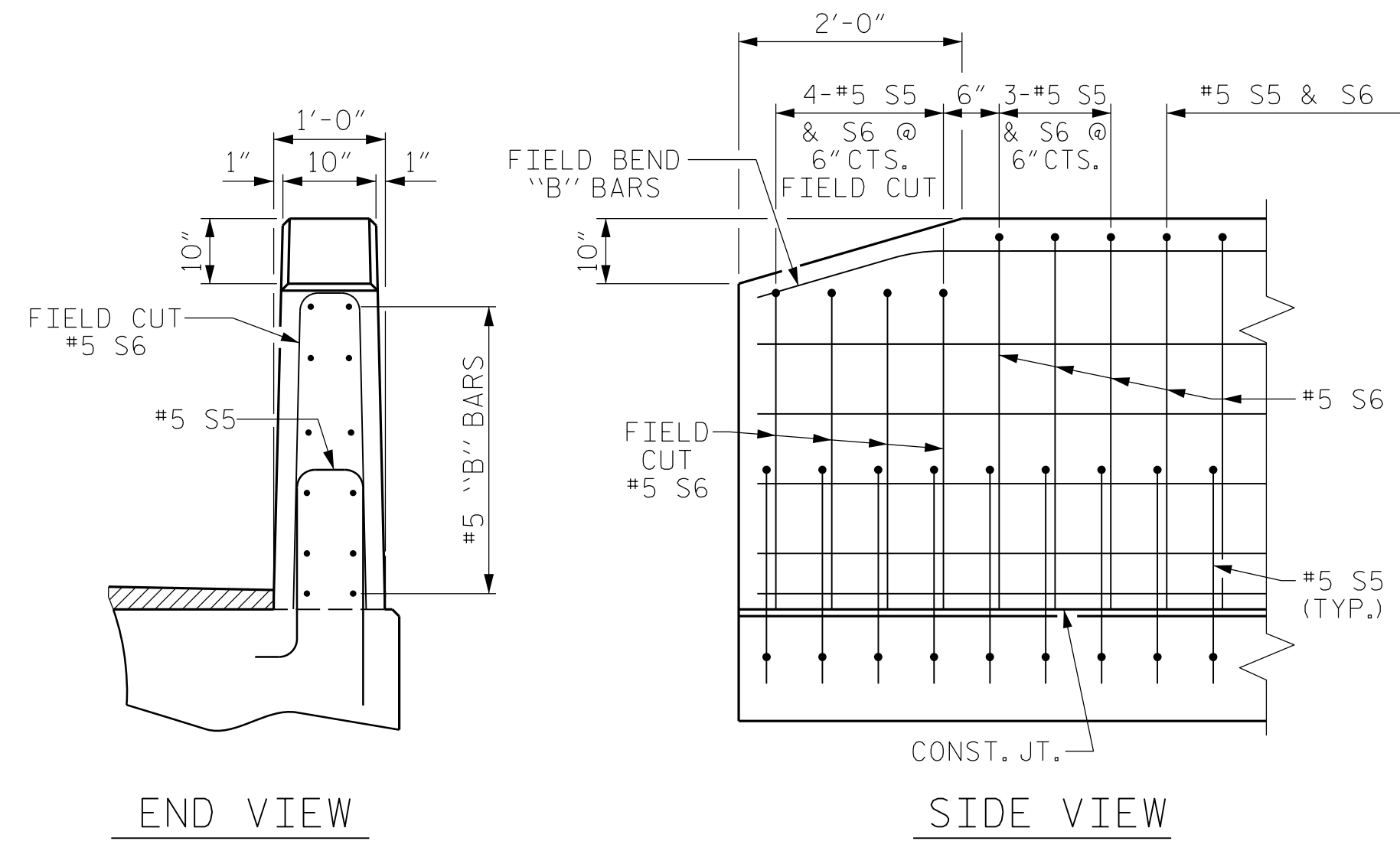
2 1/2" Ø SCHEDULE 80 PVC PIPE ATTACHED TO THE BACK OF BOTH RAILS FOR FUTURE FIBER OPTIC CABLE.



FIXED END
(TYPE II - 22 REQ'D)

ELASTOMERIC BEARING DETAILS

ELASTOMER IN ALL BEARINGS SHALL BE 60 DUROMETER HARDNESS.



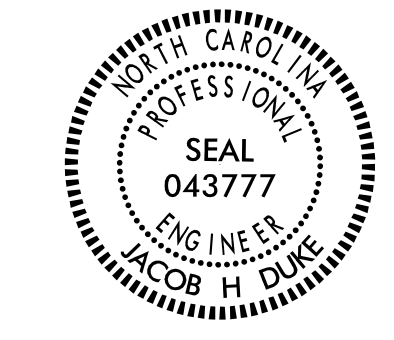
END VIEW

SIDE VIEW

END OF RAIL DETAILS

PROJECT NO. BR-0119
PITT COUNTY
STATION: 13+34.00 -L-

SHEET 5 OF 5



STATE OF NORTH CAROLINA
DEPARTMENT OF TRANSPORTATION
RALEIGH
STANDARD
3'-0" X 2'-9"
PRESTRESSED CONCRETE
BOX BEAM UNIT
SPAN 'A'

REVISIONS						SHEET NO.
NO.	BY:	DATE:	NO.	BY:	DATE:	S-B
1			3			TOTAL SHEETS
2			4			15

DESIGN ENGINEER OF RECORD: JACOB H. DUKE DATE: 12/2019
ASSEMBLED BY: FIDEL L. FLORES DATE: 12/2019
CHECKED BY: DIEGO A. AGUIRRE DATE: 12/2019
DRAWN BY: DGE 10/II CHECKED BY: TMG II/II
REV. 5/18 MAA/THC

DOCUMENT NOT CONSIDERED FINAL UNLESS ALL SIGNATURES COMPLETED

301 FAYETTEVILLE ST., SUITE 1500
RALEIGH, NC 27601 (919) 882-7839
NC FIRM LICENSE: C-1506