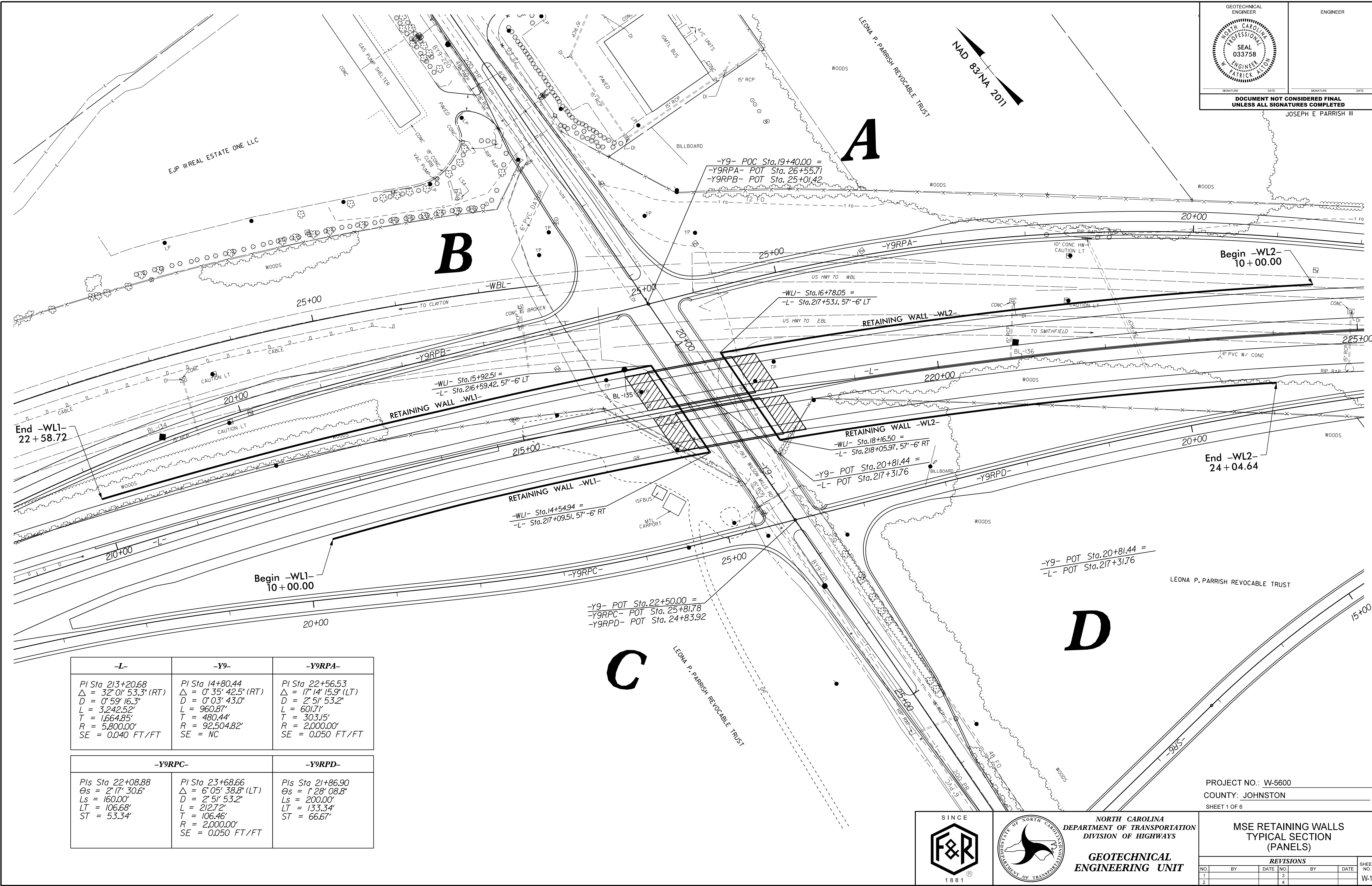


GEOTECHNICAL ENGINEER  
 NORTH CAROLINA PROFESSIONAL SEAL 033758  
 ENGINEER PATRICK A. JOHNSON

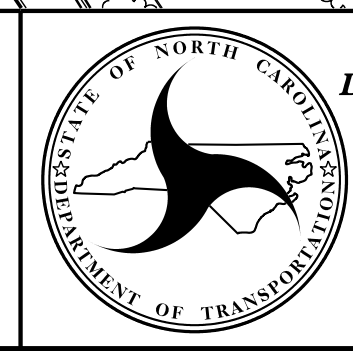
ENGINEER  
 SIGNATURE DATE  
 SIGNATURE DATE

DOCUMENT NOT CONSIDERED FINAL  
 UNLESS ALL SIGNATURES COMPLETED

JOSEPH E. PARRISH III



-L-	-Y9-	-Y9RPA-
PI Sta 213+20.68 Δ = 32° 01' 53.3" (RT) D = 0' 59' 16.3" L = 3,242.52' T = 1,664.85' R = 5,800.00' SE = 0.040 FT/FT	PI Sta 14+80.44 Δ = 0° 35' 42.5" (RT) D = 0' 03' 43.0" L = 960.87' T = 480.44' R = 92,504.82' SE = NC	PI Sta 22+56.53 Δ = 17° 14' 15.9" (LT) D = 2' 51' 53.2" L = 601.71' T = 303.15' R = 2,000.00' SE = 0.050 FT/FT
-Y9RPC-	-Y9RPD-	
PIs Sta 22+08.88 Θs = 2° 17' 30.6" Ls = 160.00' LT = 106.68' ST = 53.34'	PI Sta 23+68.66 Δ = 6° 05' 38.8" (LT) D = 2' 51' 53.2" L = 212.72' T = 106.46' R = 2,000.00' SE = 0.050 FT/FT	PIs Sta 21+86.90 Θs = 1° 28' 08.8" Ls = 200.00' LT = 133.34' ST = 66.67'



NORTH CAROLINA  
 DEPARTMENT OF TRANSPORTATION  
 DIVISION OF HIGHWAYS

**GEOTECHNICAL  
 ENGINEERING UNIT**

PROJECT NO.: W-5600  
 COUNTY: JOHNSTON  
 SHEET 1 OF 6

MSE RETAINING WALLS  
 TYPICAL SECTION  
 (PANELS)

REVISIONS						SHEET NO. W-1
NO.	BY	DATE	NO.	BY	DATE	
1			3			
2			4			