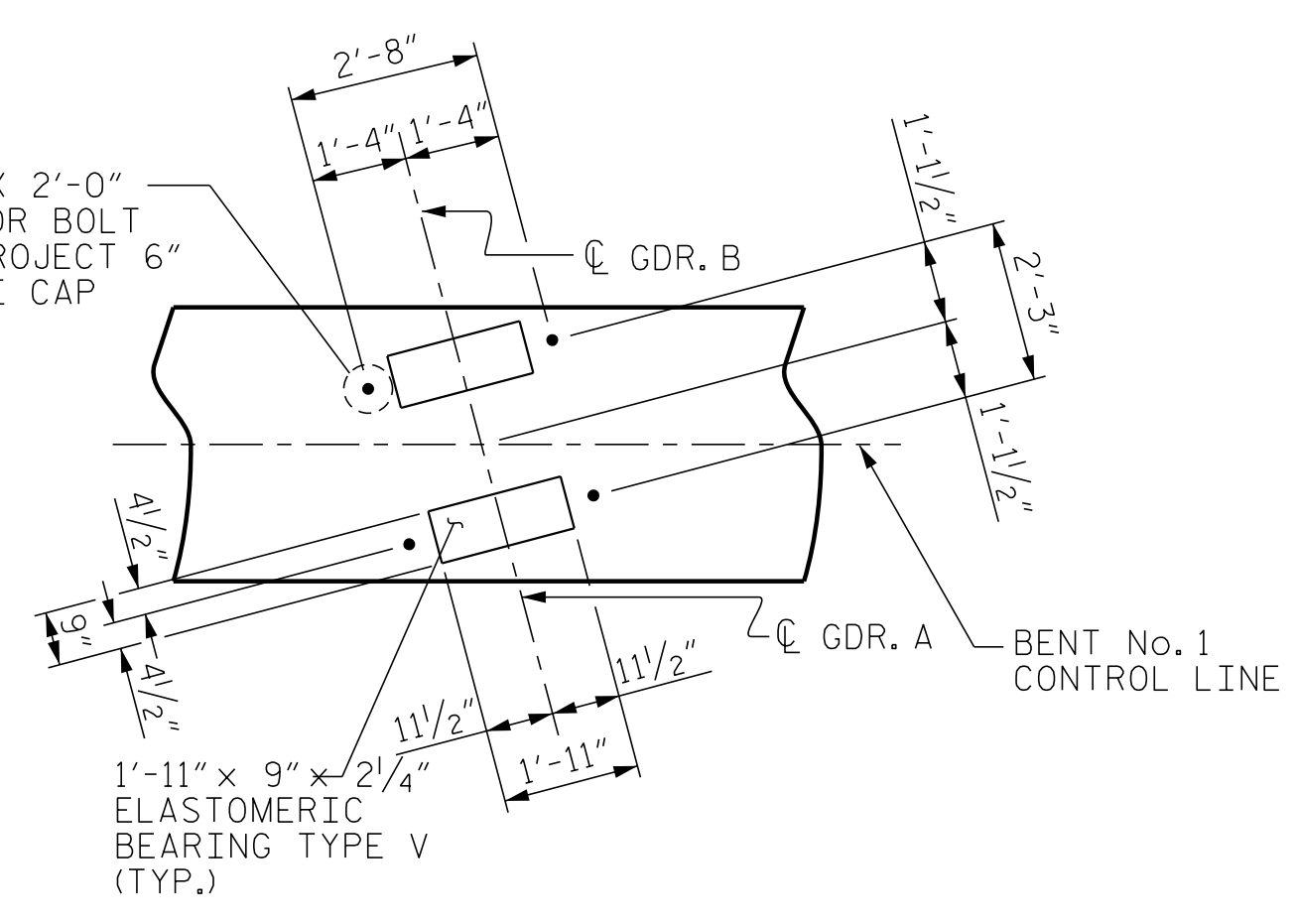
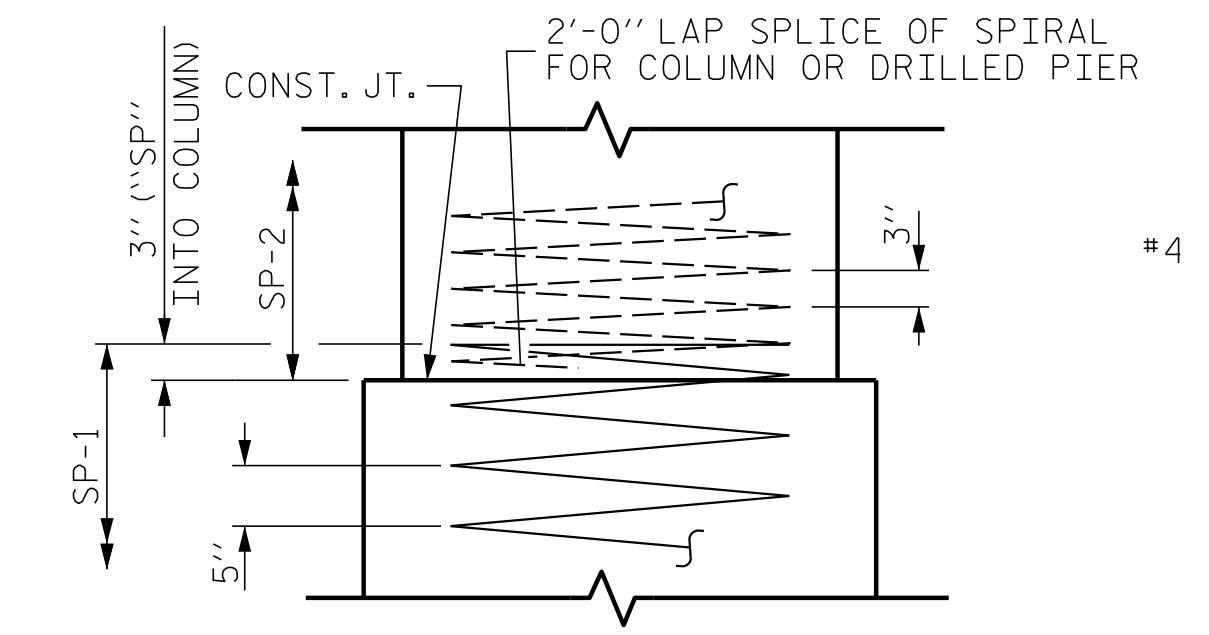


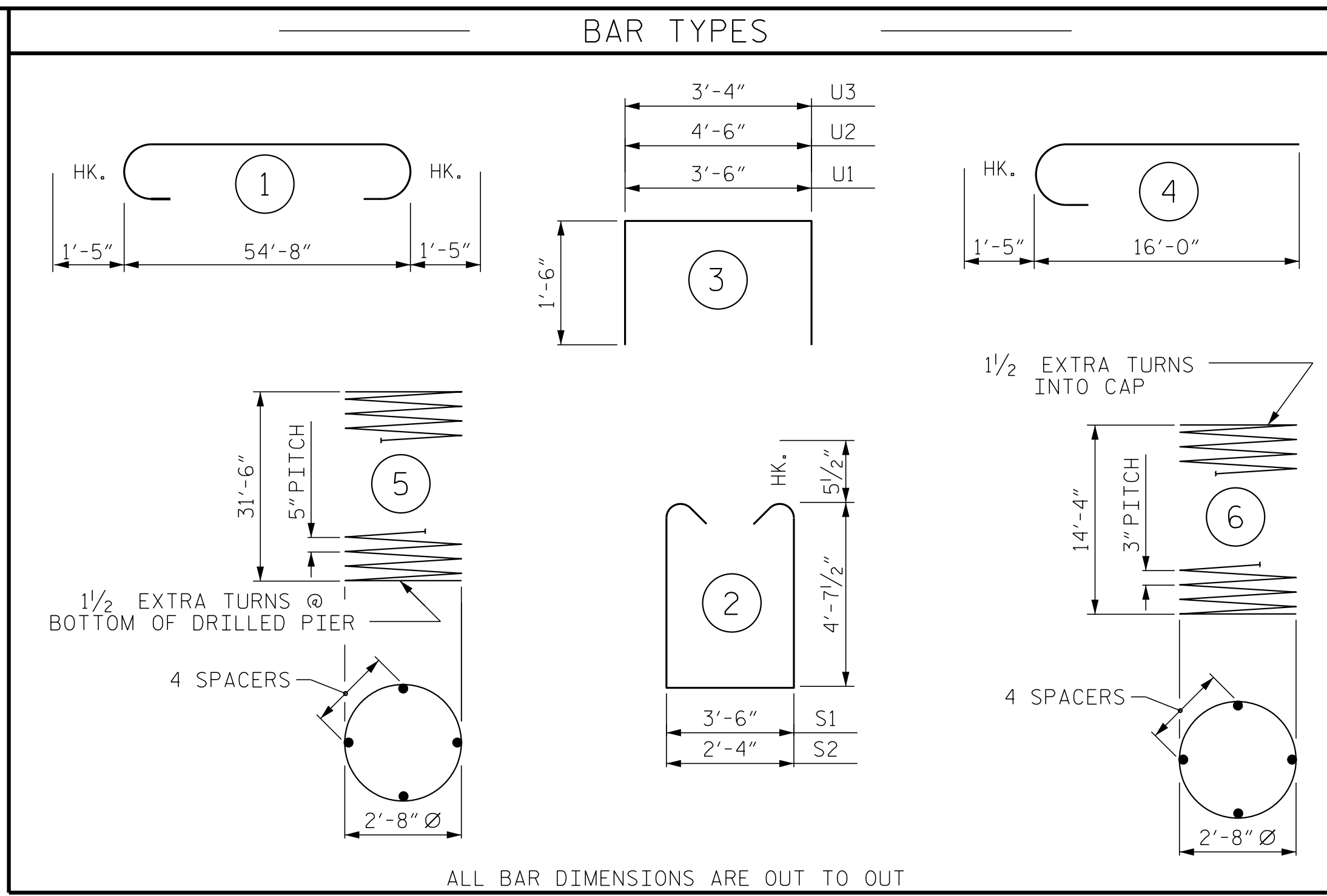
END ELEVATION



DETAIL "A"
(TYP. EA. GIRDER)



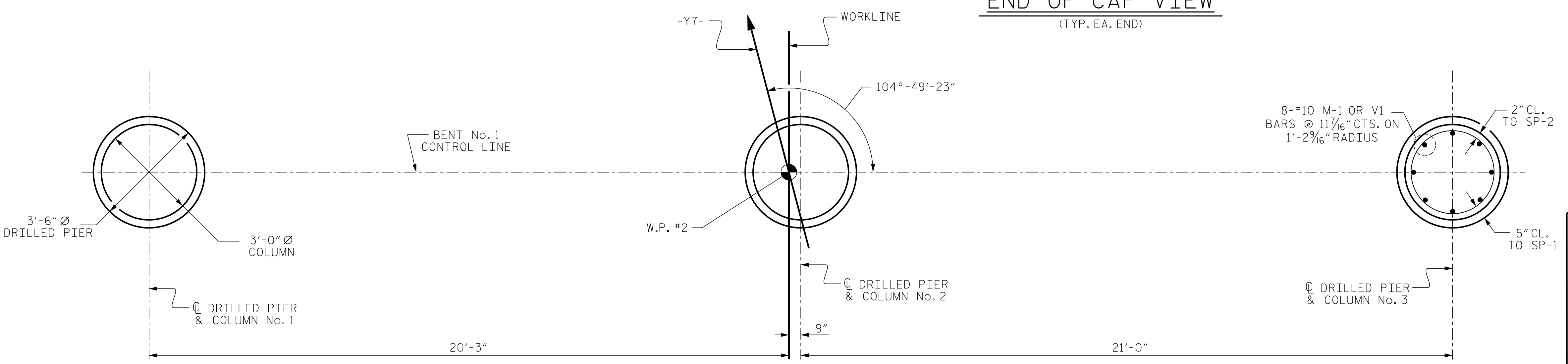
CONSTRUCTION JOINT DETAIL



ALL BAR DIMENSIONS ARE OUT TO OUT

- NOTES**
- STIRRUPS IN CAP MAY BE SHIFTED AS NECESSARY TO CLEAR DOWELS.
 - HOOKS ON V1 BARS MAY BE TURNED AS NECESSARY FOR PLACING REINFORCING STEEL.
 - FOR DRILLED PIERS, SEE SECTION 411 OF THE STANDARD SPECIFICATIONS.
 - ALL STEEL IN THE DRILLED PIERS IS INCLUDED IN THE PAY ITEMS FOR "REINFORCING STEEL" AND "SPIRAL COLUMN REINFORCING STEEL."
 - ★ INVERT ALTERNATE STIRRUPS.
 - THE LOCATION OF THE CONSTRUCTION JOINT IN THE DRILLED PIERS IS BASED ON AN APPROXIMATE GROUND LINE ELEVATION. IF THE CONSTRUCTION JOINT IS ABOVE THE ACTUAL GROUND LINE ELEVATION, THE CONTRACTOR SHALL PLACE THE CONSTRUCTION JOINT ONE FOOT BELOW THE GROUND LINE.
 - THE CONTRACTOR'S ATTENTION IS CALLED TO THE FACT THAT THE LONGITUDINAL REINFORCEMENT FOR DRILLED PIERS IS DETAILED WITH 3 FEET OF EXTRA LENGTH.

END OF CAP VIEW
(TYP. EA. END)

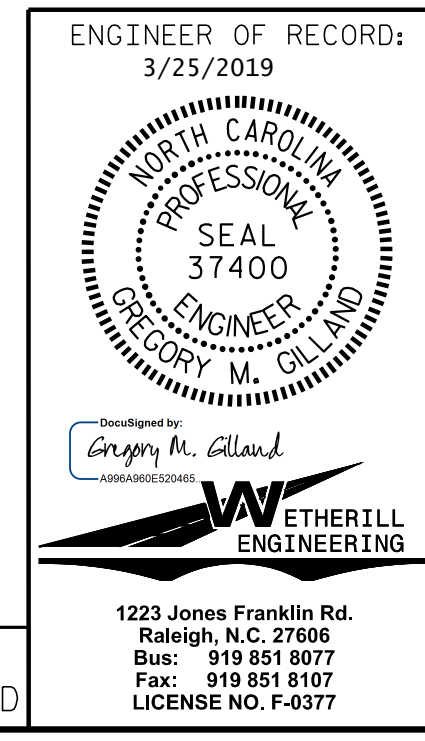


PLAN OF DRILLED PIERS AND COLUMNS

(REINFORCING STEEL AND DIMENSIONS ARE TYPICAL FOR EACH COLUMN & DRILLED PIER)

BILL OF MATERIAL					
BENT No. 1					
BAR	NO.	SIZE	TYPE	LENGTH	WEIGHT
B1	6	#10	STR	54'-10"	1416
B2	6	#10	1	57'-6"	1485
B3	8	#5	STR	54'-10"	458
B4	6	#4	STR	14'-6"	58
B5	12	#4	STR	9'-11"	79
M1	24	#10	STR	40'-7"	4191
S1	16	#5	2	13'-8"	228
S2	120	#5	2	12'-6"	1565
U1	57	#4	3	6'-6"	247
U2	6	#4	3	7'-6"	30
U3	8	#4	3	6'-4"	34
V1	24	#10	4	17'-5"	1799
REINFORCING STEEL					11,590 LBS.
SP-1	3	*	5	634'-1"	1984
SP-2	3	**	6	485'-10"	974
SPIRAL COLUMN REINFORCING STEEL					2,958 LBS.
* THE SP-1 SPIRAL REINFORCING STEEL SHALL BE W31 OR D-31 COLD DRAWN WIRE OR #5 PLAIN OR DEFORMED BAR					
** THE SP-2 SPIRAL REINFORCING STEEL SHALL BE W20 OR D-20 COLD DRAWN WIRE OR #4 PLAIN OR DEFORMED BAR					
CLASS A CONCRETE BREAKDOWN					
POUR #2 (COLUMNS)					11.1 C.Y.
POUR #3 (CAP)					41.0 C.Y.
TOTAL CLASS A CONCRETE					52.1 C.Y.
DRILLED PIERS:					
DRILLED PIER CONCRETE					
POUR #1 (DRILLED PIERS)					34.2 C.Y.
3'-6" Ø DRILLED PIER NOT IN SOIL					51.0 LIN. FT.
3'-6" Ø DRILLED PIER IN SOIL					45.0 LIN. FT.
CSL TUBES					402.0 LIN. FT.

PROJECT NO. W-5600
JOHNSTON COUNTY
 STATION: 27+01.91 -Y7-
 SHEET 2 OF 2



STATE OF NORTH CAROLINA DEPARTMENT OF TRANSPORTATION RALEIGH					
SUBSTRUCTURE BENT No. 1					
REVISIONS					
NO.	BY:	DATE:	NO.	BY:	DATE:
1			3		
2			4		

DRAWN BY: AMM/GMG DATE: 4-18
 CHECKED BY: BCH DATE: 11-18

DOCUMENT NOT CONSIDERED FINAL
 UNLESS ALL SIGNATURES COMPLETED

1223 Jones Franklin Rd.
 Raleigh, N.C. 27606
 Bus: 919 851 8077
 Fax: 919 851 8107
 LICENSE NO. F-0377

SHEET NO.
 S3-25
 TOTAL SHEETS
 32

P:\2017\1712101\W-5600-USTO-Structures\DGM\Y7-over-L-W-5600_XT_BT_WE I.dgn
 3/20/2019 11:30:14 AM