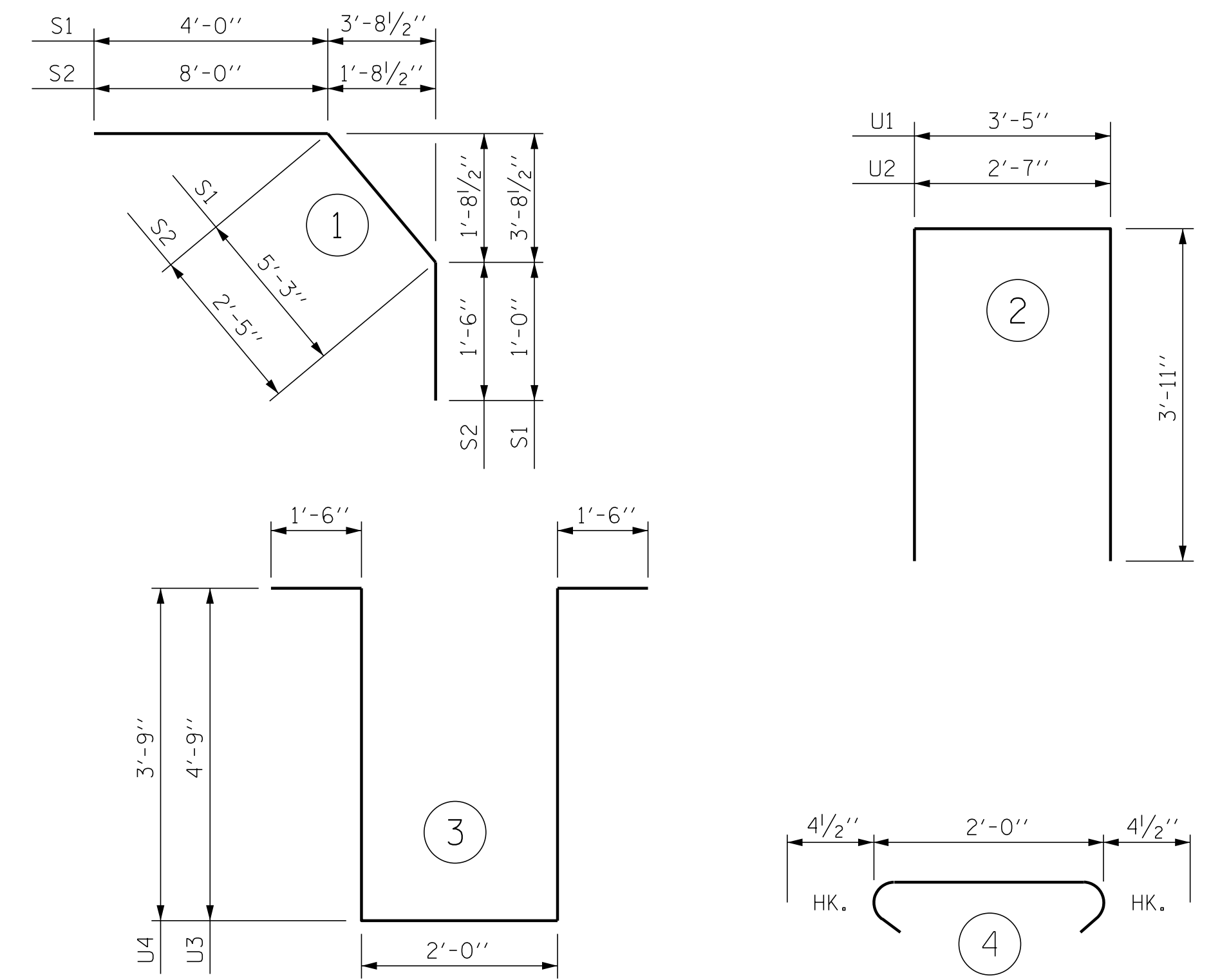


BAR TYPES



ALL BAR DIMENSIONS ARE OUT TO OUT

SUPERSTRUCTURE BILL OF MATERIAL			
	CLASS AA CONCRETE (CU. YDS.)	REINFORCING STEEL (LBS.)	* EPOXY COATED REINFORCING STEEL (LBS.)
TOTALS **	433.3	39,284	40,012

** QUANTITIES FOR CONCRETE PARAPETS ARE NOT INCLUDED

REINFORCING BAR SCHEDULE

SPAN "A-B"					
BAR	NO.	SIZE	TYPE	LENGTH	WEIGHT
* A1	356	#5	STR	55'-9"	20700
A2	356	#5	STR	55'-9"	20700
* A101	6	#5	STR	50'-5"	316
* A102	6	#5	STR	44'-9"	280
* A103	6	#5	STR	39'-1"	245
* A104	6	#5	STR	33'-5"	209
* A105	6	#5	STR	27'-9"	174
* A106	6	#5	STR	22'-1"	138
* A107	6	#5	STR	16'-5"	103
* A108	6	#5	STR	10'-9"	67
* A109	6	#5	STR	5'-1"	32
A201	6	#5	STR	50'-5"	316
A202	6	#5	STR	44'-9"	280
A203	6	#5	STR	39'-1"	245
A204	6	#5	STR	33'-5"	209
A205	6	#5	STR	27'-9"	174
A206	6	#5	STR	22'-1"	138
A207	6	#5	STR	16'-5"	103
A208	6	#5	STR	10'-9"	67
A209	6	#5	STR	5'-1"	32
* B1	218	#6	STR	20'-0"	6549
* B2	148	#4	STR	23'-9"	2348
* B3	74	#6	STR	36'-3"	4029
* B4	72	#6	STR	30'-0"	3244
B5	280	#5	STR	49'-9"	14529
* B6	14	#4	STR	29'-3"	274
K1	20	#4	STR	29'-9"	397
K2	10	#4	STR	8'-0"	53
K3	20	#4	STR	9'-0"	120
K4	10	#4	STR	8'-4"	56
K5	10	#4	STR	7'-6"	50
K6	10	#4	STR	26'-3"	175
K7	8	#4	STR	2'-7"	14
K8	8	#4	STR	3'-1"	16
K9	4	#4	STR	2'-4"	6
K10	10	#4	STR	6'-3"	42
K11	10	#4	STR	8'-0"	53
K12	30	#4	STR	8'-5"	169
* S1	88	#4	1	10'-3"	603
* S2	88	#4	1	11'-11"	701
S3	150	#4	4	2'-9"	276
U1	88	#4	2	11'-3"	661
U2	4	#4	2	10'-5"	28
U3	30	#4	3	14'-6"	291
U4	10	#4	3	12'-6"	84

GROOVING BRIDGE FLOORS

APPROACH SLABS	1,445 SQ.FT.
BRIDGE DECK	9,735 SQ.FT.
TOTAL	11,180 SQ.FT.

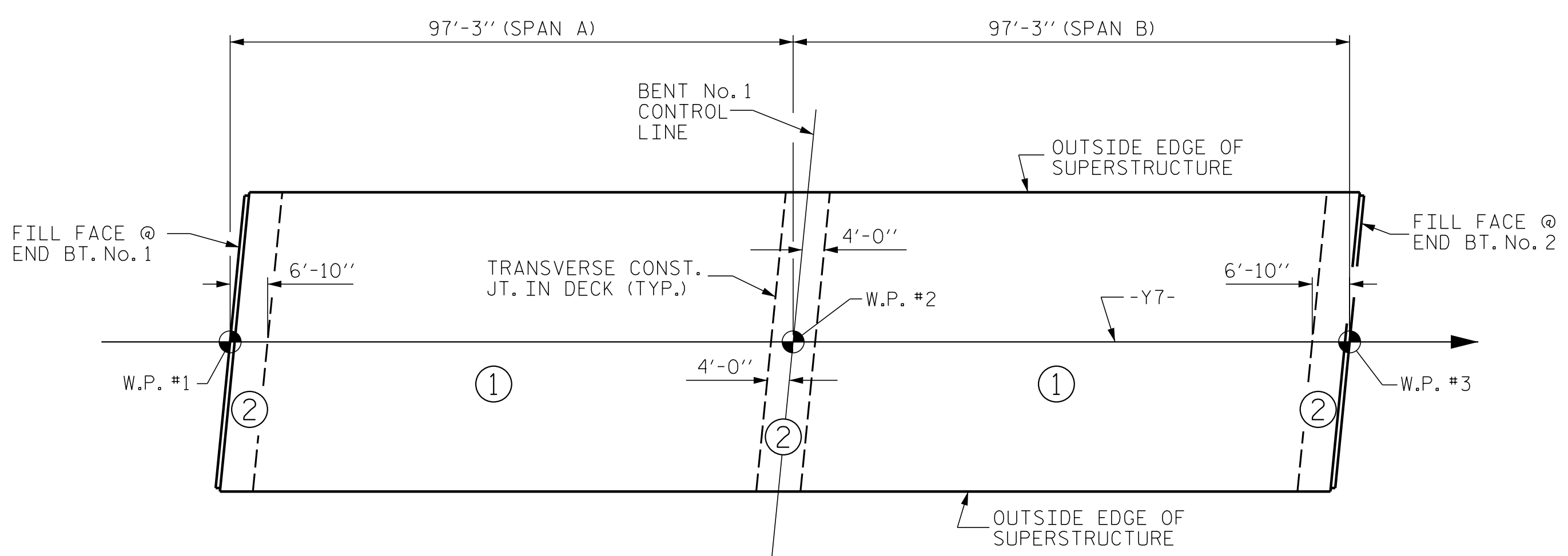
CLASS AA CONCRETE BREAKDOWN

POUR #1	147.7	CY
POUR #2	196.2	CY
POUR #3A	44.7	CY
POUR #3B	44.7	CY
CLASS AA CONCRETE BREAKDOWN TOTAL	433.3	CY

SUPERSTRUCTURE REINFORCING STEEL LENGTHS ARE BASED ON THE FOLLOWING MINIMUM SPLICE LENGTHS

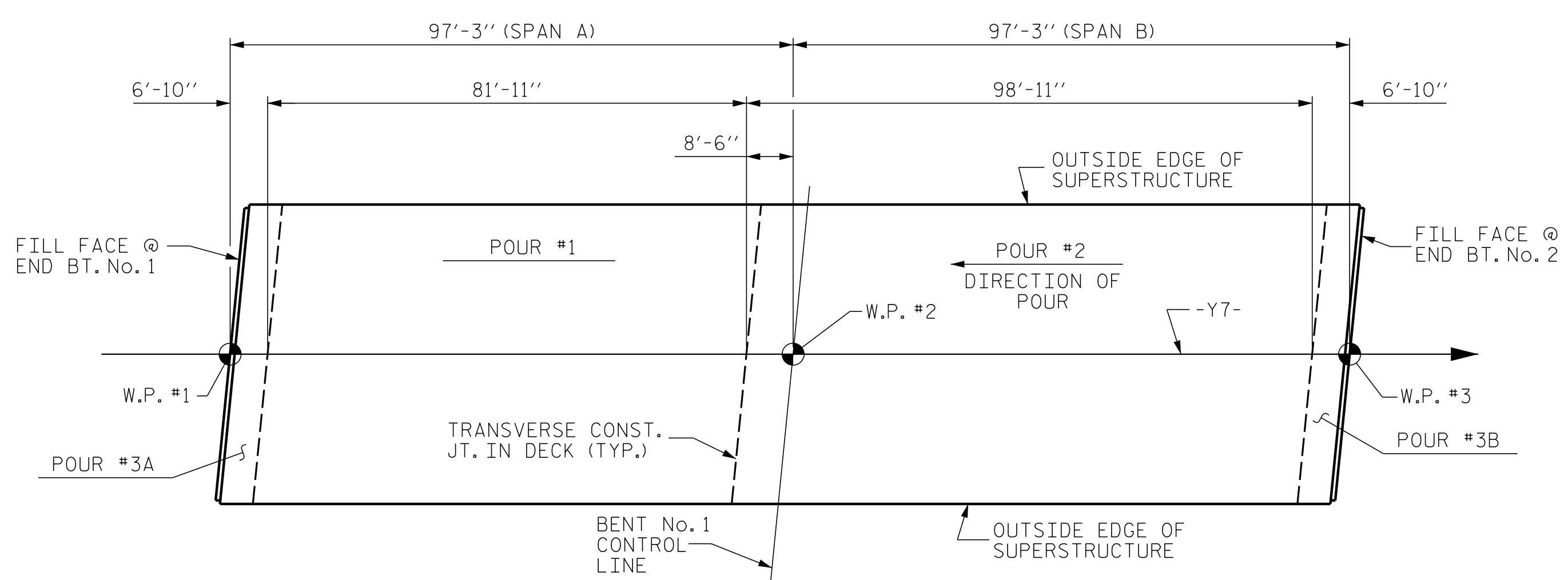
BAR SIZE	SUPERSTRUCTURE EXCEPT APPROACH SLABS, PARAPET, AND BARRIER RAIL		APPROACH SLABS		PARAPET AND BARRIER RAIL
	EPOXY COATED	UNCOATED	EPOXY COATED	UNCOATED	
#4	2'-0"	1'-9"	2'-0"	1'-9"	2'-9"
#5	2'-6"	2'-2"	2'-6"	2'-2"	3'-5"
#6	3'-0"	2'-7"	3'-10"	2'-7"	4'-4"
#7	5'-3"	3'-6"			
#8	6'-10"	4'-7"			

PROJECT NO. W-5600
JOHNSTON COUNTY
 STATION: 27+01.91 -Y7-



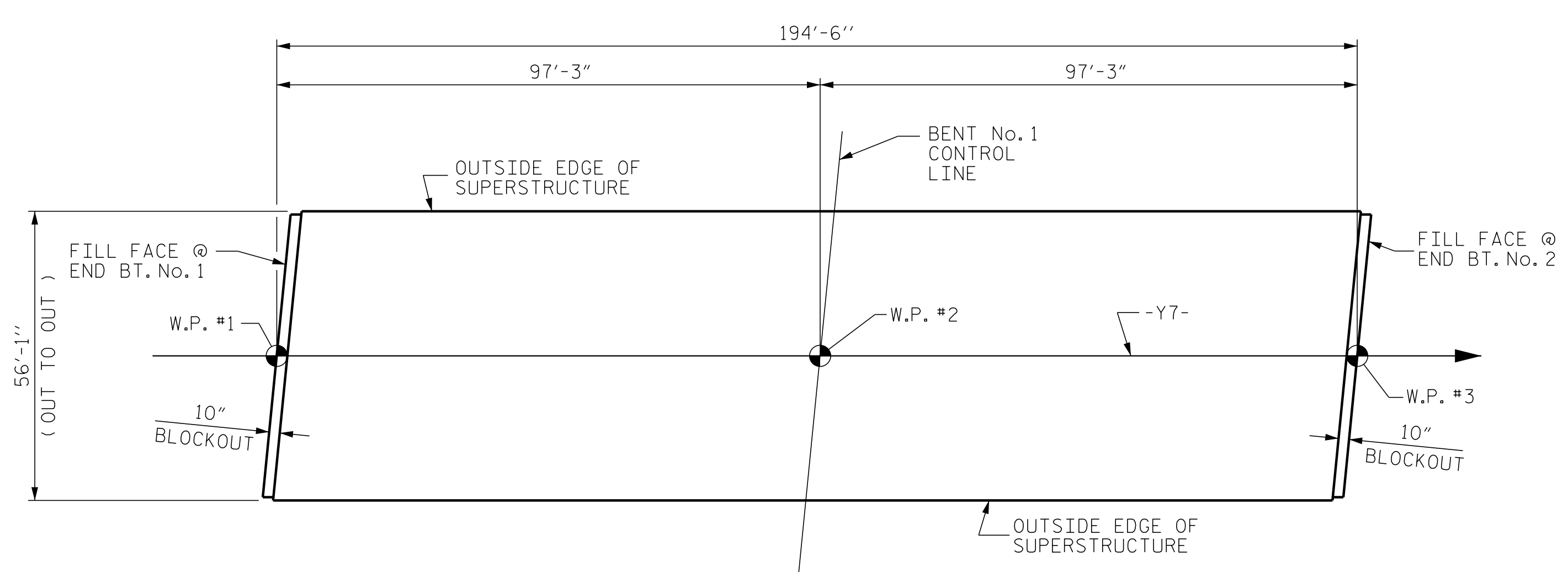
OPTIONAL DECK POUR DETAIL

POUR ② SHALL NOT BE STARTED UNTIL BOTH ADJACENT POUR ① REACH A MINIMUM OF 3,000 PSI

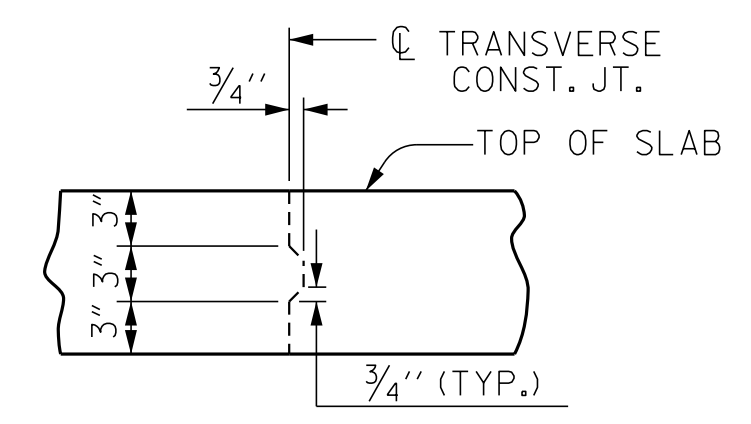


CONCRETE DECK POUR DETAIL

NOTE: EACH POUR #3 INCLUDES UPPER PART OF THE INTEGRAL END BENT.



LAYOUT FOR COMPUTING AREA REINFORCED CONCRETE DECK SLAB (SQ. FT. = 10,908)



TRANSVERSE CONST. JOINT DETAIL

NOTE: SLAB REINFORCING STEEL SHALL BE CONTINUOUS THRU JOINT

ENGINEER OF RECORD:
 3/25/2019

 Gregory M. Gilland
 WETHERILL ENGINEERING
 1223 Jones Franklin Rd.
 Raleigh, N.C. 27606
 Bus: 919 851 8077
 Fax: 919 851 8107
 LICENSE NO. F-0377

STATE OF NORTH CAROLINA
 DEPARTMENT OF TRANSPORTATION
 RALEIGH
 SUPERSTRUCTURE
 BILL OF MATERIAL

REVISIONS						SHEET NO.
NO.	BY:	DATE:	NO.	BY:	DATE:	
1			3			TOTAL SHEETS
2			4			32

DOCUMENT NOT CONSIDERED FINAL UNLESS ALL SIGNATURES COMPLETED

P:\2017\1712101\W-5600_USTO\Structures\DGM\Y7-over-L-W-5600_XT-BM_WE I.dgn
 3/20/2019 10:53:01 AM

DRAWN BY: D. HODGE DATE: 11/17
 CHECKED BY: G.M. GILLAND DATE: 1/18