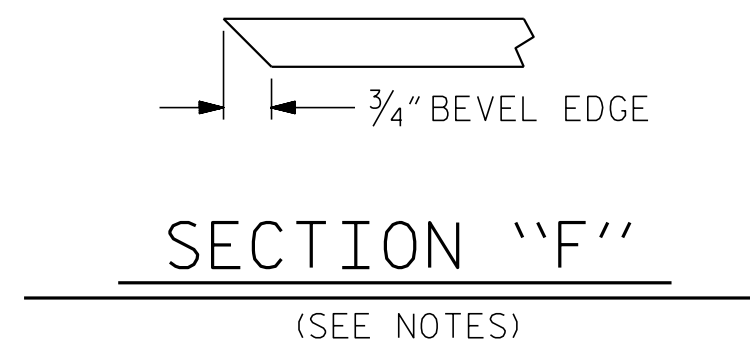


EMBEDDED PLATE "B-1" DETAILS FOR AASHTO TYPE IV GIRDER

(2 REQ'D PER GIRDER)



(SEE NOTES)

NOTES

ALL PRESTRESSING STRANDS SHALL BE 7-WIRE LOW-RELAXATION GRADE 270 STRANDS AND SHALL CONFORM TO AASHTO M203 EXCEPT FOR SAMPLING REQUIREMENTS WHICH SHALL BE IN ACCORDANCE WITH THE STANDARD SPECIFICATIONS.

ALL REINFORCING STEEL SHALL BE GRADE 60.

EMBEDDED PLATE "B-1" SHALL BE GALVANIZED IN ACCORDANCE WITH THE STANDARD SPECIFICATIONS.

ANCHOR STUDS SHALL CONFORM TO AASHTO M169 GRADES 1010 THROUGH 1020 OR APPROVED EQUAL, AND SHALL MEET THE TYPE "B" REQUIREMENTS OF SUBSECTION 7.3 OF THE ANSI/AASHTO/AWS D1.5 BRIDGE WELDING CODE.

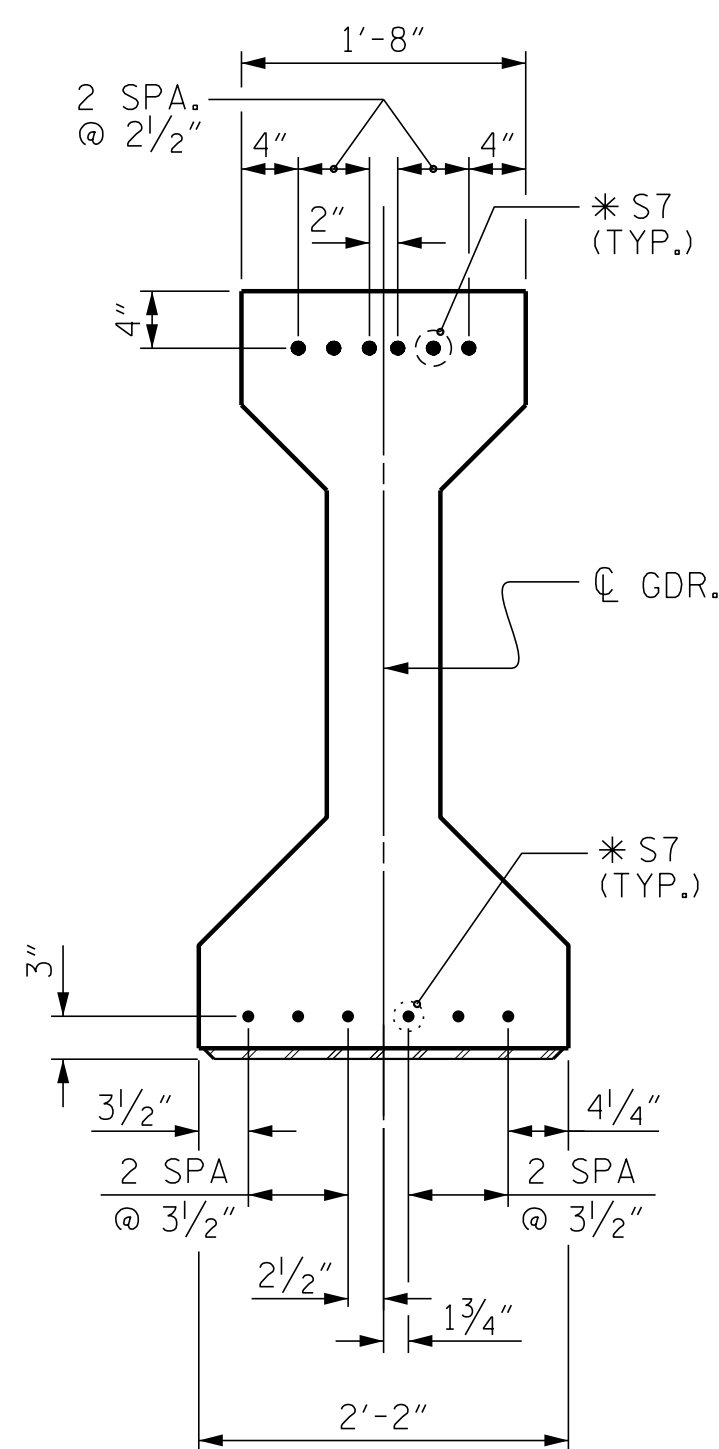
AT ENDS OF GIRDERS TO BE EMBEDDED IN CONCRETE DIAPHRAGMS OR END WALLS, PRESTRESSING STRANDS MAY EXTEND A MAXIMUM OF 2" BEYOND THE GIRDER ENDS. OTHERWISE, PRESTRESSING STRANDS SHALL BE CUT FLUSH WITH THE GIRDER ENDS.

THE TRANSFER OF LOAD FROM THE ANCHORAGES TO THE GIRDER SHALL BE DONE WHEN CONCRETE HAS REACHED A COMPRESSIVE STRENGTH OF NOT LESS THAN 6000 PSI.

DEPENDING ON THE TYPE OF SYSTEM USED TO SUPPORT THE DECK SLAB FORMS, PRESET ANCHORS MAY BE NECESSARY IN THE PRESTRESSED CONCRETE GIRDER.

THE TOP SURFACE OF THE GIRDER, EXCLUDING THE OUTSIDE 4", SHALL BE RAKED TO A DEPTH OF 1/4".

THE CONTRACTOR HAS THE OPTION TO PROVIDE, AT NO ADDITIONAL COST TO THE DEPARTMENT, 2 ADDITIONAL STRANDS AT THE TOP OF THE GIRDER TO FACILITATE TYING OF THE REINFORCING STEEL. THESE STRANDS SHALL BE PULLED TO A LOAD OF 4500 lbs.



DETAIL "A"

(FOR AASHTO TYPE IV GIRDERS)

— DEAD LOAD DEFLECTION TABLE FOR GIRDERS OF SPANS A & B —												
0.6" Ø LOW RELAXATION	GIRDERS 1 & 6											
TENTH POINTS	0	.1	.2	.3	.4	.5	.6	.7	.8	.9	0	
CAMBER (GIRDER ALONE IN PLACE)	↑	0	0.063	0.119	0.163	0.191	0.200	0.191	0.163	0.119	0.063	0
* DEFLECTION DUE TO SUPERIMPOSED D.L.	↓	0	0.046	0.091	0.126	0.148	0.156	0.148	0.126	0.091	0.046	0
FINAL CAMBER	↑	0	3/16"	5/16"	7/16"	1/2"	9/16"	1/2"	7/16"	5/16"	3/16"	0

* INCLUDES FUTURE WEARING SURFACE AND FUTURE SIDEWALK. ALL VALUES ARE SHOWN IN FEET (DECIMAL FORM), EXCEPT " FINAL CAMBER ", WHICH IS GIVEN IN INCHES (FRACTION FORM).

— DEAD LOAD DEFLECTION TABLE FOR GIRDERS OF SPANS A & B —												
0.6" Ø LOW RELAXATION	GIRDERS 2 THRU 5											
TENTH POINTS	0	.1	.2	.3	.4	.5	.6	.7	.8	.9	0	
CAMBER (GIRDER ALONE IN PLACE)	↑	0	0.063	0.119	0.163	0.191	0.200	0.191	0.163	0.119	0.063	0
* DEFLECTION DUE TO SUPERIMPOSED D.L.	↓	0	0.050	0.098	0.135	0.159	0.168	0.159	0.135	0.098	0.050	0
FINAL CAMBER	↑	0	3/16"	1/4"	5/16"	3/8"	3/8"	3/8"	5/16"	1/4"	3/16"	0

* INCLUDES FUTURE WEARING SURFACE AND FUTURE SIDEWALK. ALL VALUES ARE SHOWN IN FEET (DECIMAL FORM), EXCEPT " FINAL CAMBER ", WHICH IS GIVEN IN INCHES (FRACTION FORM).

PROJECT NO. W-5600
JOHNSTON COUNTY
 STATION: 27+01.91 -Y7-

P:\2017\1712\1.01\W-5600\USTO Structures\DGM\Y7-over-L\W-5600_Y7_PCG_ME I.dgn
 3/20/2019 10:28:04 AM

ASSEMBLED BY : D. HODGE	DATE : 11/17
CHECKED BY : G.M. GILLAND	DATE : 1/18
DRAWN BY : ELR 11/91	REV. 1/15 MAA/TMG
CHECKED BY : GRP 11/91	REV. 2/15 MAA/TMG
	REV. 12/17 MAA/THC

DOCUMENT NOT CONSIDERED FINAL UNLESS ALL SIGNATURES COMPLETED

ENGINEER OF RECORD:
 3/25/2019

 Gregory M. Gilland
 WETHERILL ENGINEERING
 1223 Jones Franklin Rd.
 Raleigh, N.C. 27606
 Bus: 919 851 8077
 Fax: 919 851 8107
 LICENSE NO. F-0377

STATE OF NORTH CAROLINA
 DEPARTMENT OF TRANSPORTATION
 RALEIGH

STANDARD
 PRESTRESSED CONCRETE GIRDER
 CONTINUOUS FOR LIVE LOAD
 DETAILS

REVISIONS						SHEET NO.
NO.	BY:	DATE:	NO.	BY:	DATE:	S3-12
1			3			TOTAL SHEETS
2			4			32