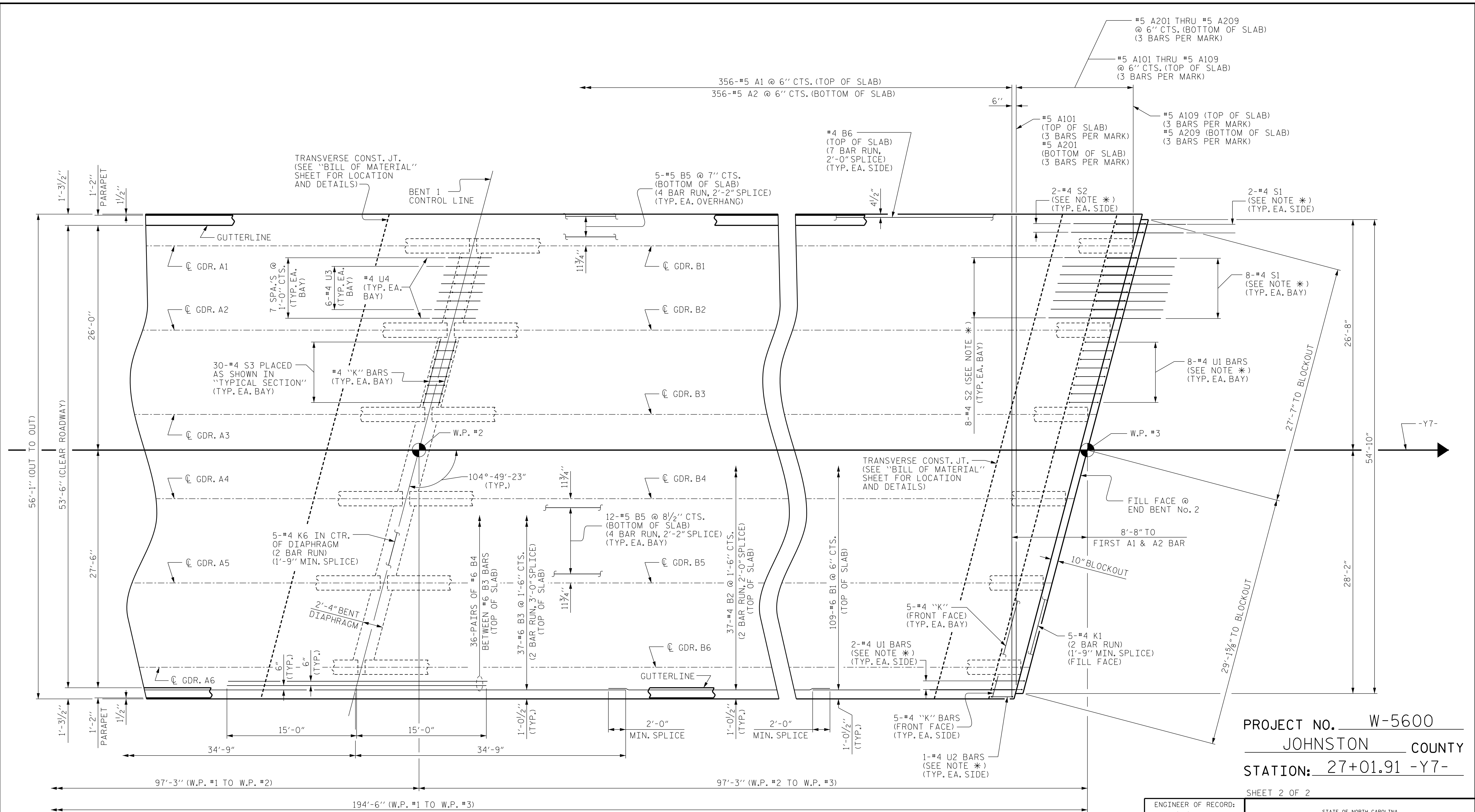


P:\2017\1712101\W-5600\_USTO.Structures\GMA-Y7-over-L-W-5600\_XT\_PS\_WE I.dgn  
 3/20/2019 10:15:14 AM



SPAN "A"

SPAN "B"  
PARTIAL PLAN OF SPAN

**NOTES :**  
 FOR CONCRETE PARAPET DETAILS AND REINFORCING STEEL, SEE "CONCRETE PARAPET" SHEETS.  
 \* THESE BARS ARE TO MATCH SPACING OF THE #4 "K" BARS IN END BENT.  
 FOR LOCATIONS OF INTERMEDIATE STEEL DIAPHRAGMS, SEE "GIRDER LAYOUT" SHEET.

PROJECT NO. W-5600  
JOHNSTON COUNTY  
 STATION: 27+01.91 -Y7-  
 SHEET 2 OF 2

DRAWN BY: D. HODGE DATE: 11/17  
 CHECKED BY: G.M. GILLAND DATE: 1/18

DOCUMENT NOT CONSIDERED FINAL  
 UNLESS ALL SIGNATURES COMPLETED

ENGINEER OF RECORD:  
 3/25/2019  
  
 Gregory M. Gilland  
 WETHERILL ENGINEERING

STATE OF NORTH CAROLINA DEPARTMENT OF TRANSPORTATION RALEIGH					
SUPERSTRUCTURE PLAN OF SPAN					
SHEET NO. S3-8					
REVISIONS					
NO.	BY:	DATE:	NO.	BY:	DATE:
1			3		
2			4		
TOTAL SHEETS 32					

1223 Jones Franklin Rd.  
 Raleigh, N.C. 27606  
 Bus: 919 851 8077  
 Fax: 919 851 8107  
 LICENSE NO. F-0377