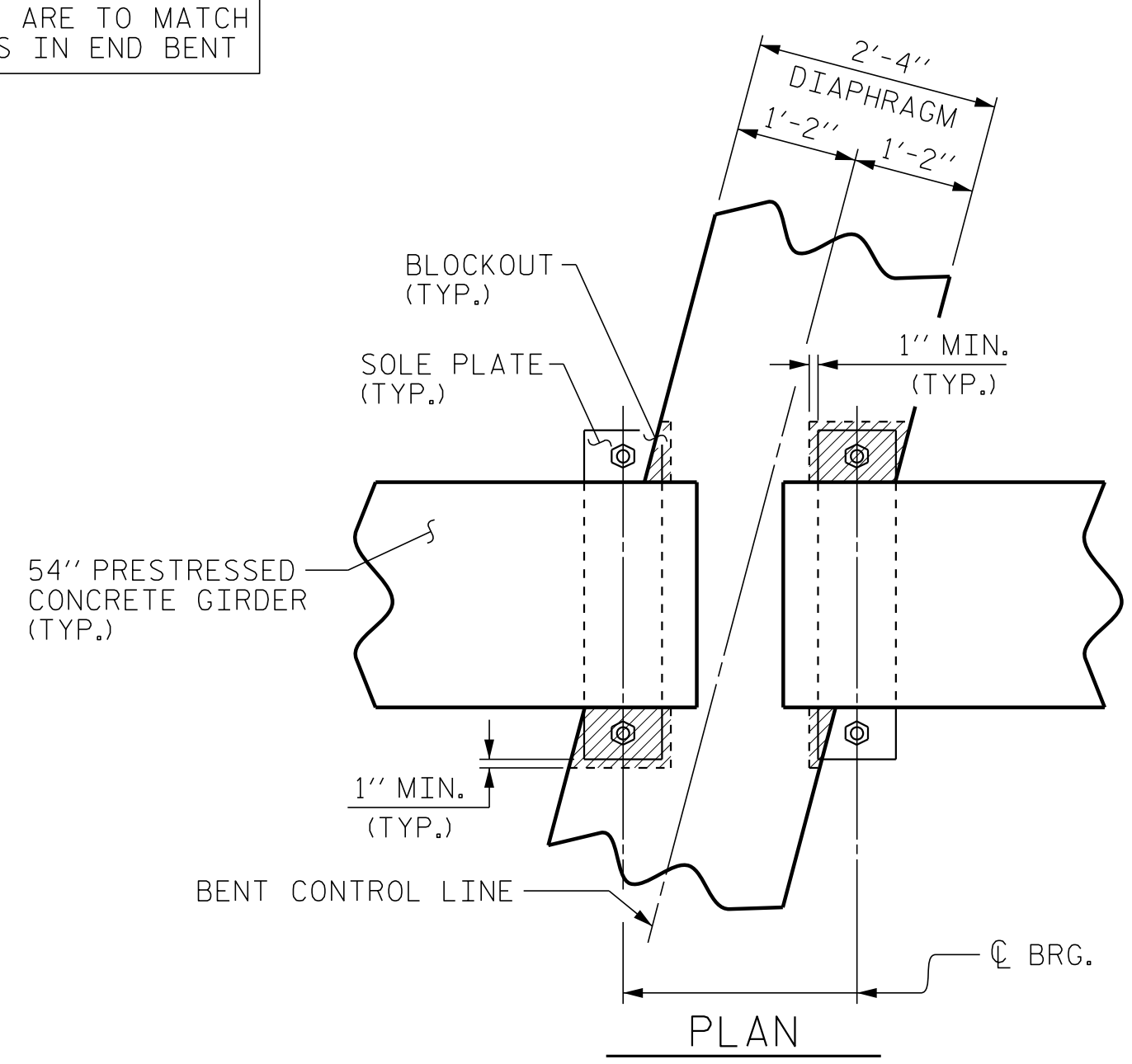
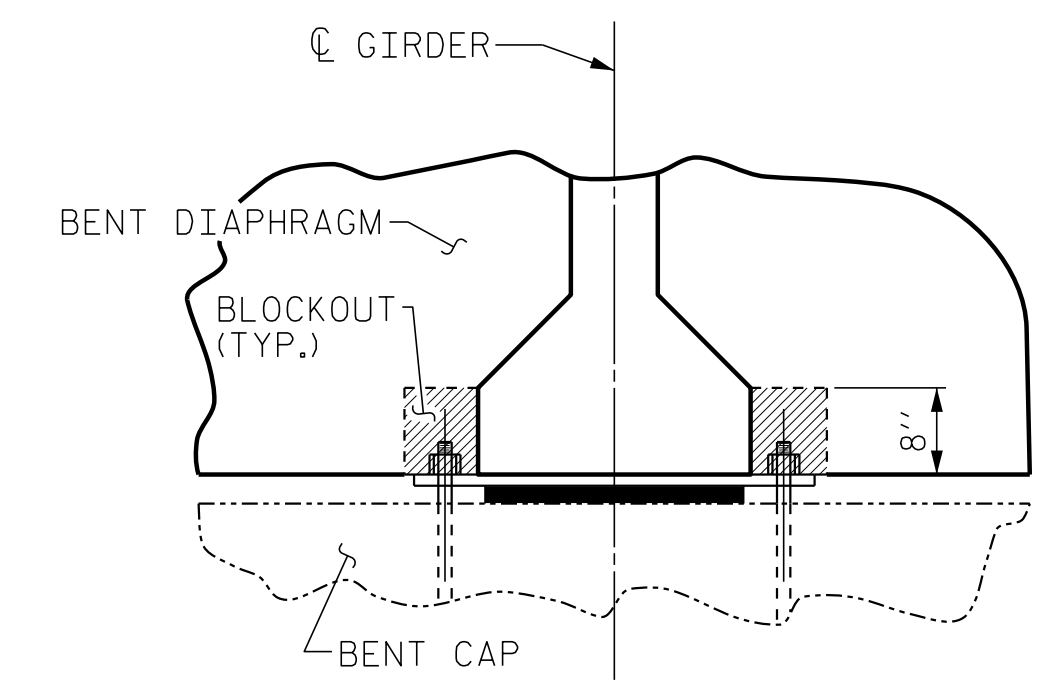


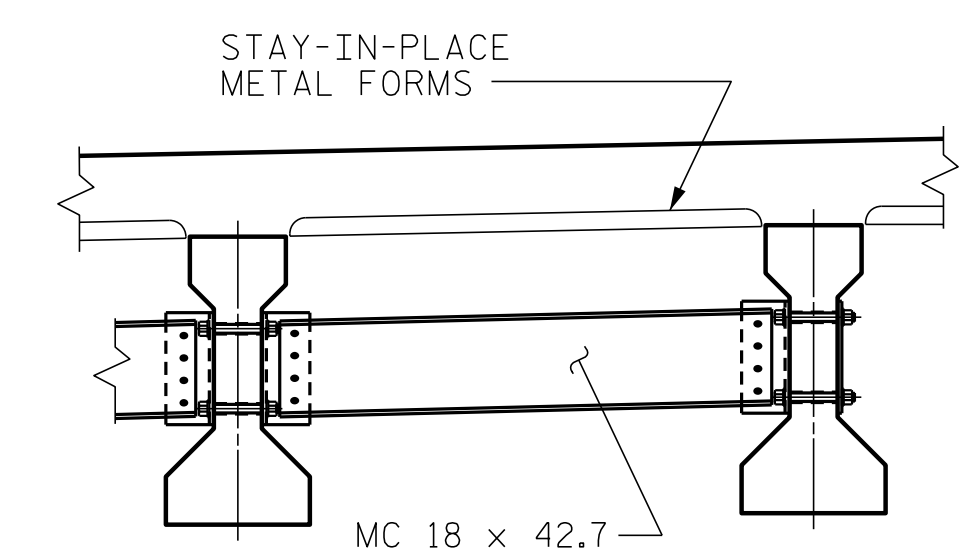
NOTE \*  
THESE BARS ARE TO MATCH  
#4 "V" BARS IN END BENT



BENT DIAPHRAGM BLOCK-OUT DETAIL



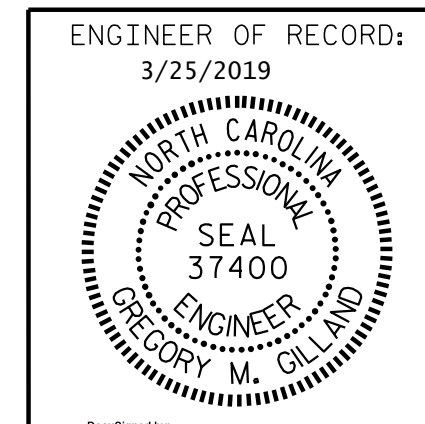
SECTION



TYPICAL INTERMEDIATE DIAPHRAGM

SEE "INTERMEDIATE STEEL DIAPHRAGMS FOR TYPE IV PRESTRESSED CONCRETE GIRDERS" SHEET FOR DETAILS

PROJECT NO. W-5600  
JOHNSTON COUNTY  
 STATION: 27+01.91 -Y7-  
 SHEET 1 OF 2



Gregory M. Gilland  
 WETHERILL ENGINEERING

STATE OF NORTH CAROLINA  
 DEPARTMENT OF TRANSPORTATION  
 RALEIGH  
 SUPERSTRUCTURE  
 TYPICAL SECTION

REVISIONS						SHEET NO.
NO.	BY:	DATE:	NO.	BY:	DATE:	S3-5
1			3			TOTAL SHEETS
2			4			32

DOCUMENT NOT CONSIDERED FINAL  
 UNLESS ALL SIGNATURES COMPLETED

P:\2017\1712101\W-5600\_STRUCTURES\DGMA-Y7-over-L-W-5600\_XT-TS\_WE I.dgn  
 3/20/2019 10:08:59 AM

DRAWN BY: D. HODGE DATE: 11/17  
 CHECKED BY: G.M. GILLAND DATE: 1/18