

**STRUCTURAL STEEL NOTES**

ALL INTERMEDIATE DIAPHRAGM STEEL AND CONNECTOR PLATES SHALL BE AASHTO M270 GRADE 50 OR APPROVED EQUAL.

TENSION ON THE ASTM A325 BOLTS THROUGH THE CHANNEL MEMBER SHALL BE CALIBRATED USING DIRECT TENSION INDICATOR WASHERS IN ACCORDANCE WITH THE STANDARD SPECIFICATIONS.

TENSION ON THE ASTM A449 BOLTS THROUGH THE GIRDER WEB SHALL BE SNUG TIGHTENED FOLLOWED BY AN ADDITIONAL 1/4 TURN.

THE PLATES, BENT PLATES, CHANNELS, AND ANGLES SHALL BE GALVANIZED OR METALLIZED IN ACCORDANCE WITH THE STANDARD SPECIFICATIONS. FOR THERMAL SPRAYED COATINGS (METALLIZATION), SEE SPECIAL PROVISIONS.

FOR METALLIZATION, APPLY A THERMAL SPRAYED COATING WITH A SEAL COAT TO ALL STEEL DIAPHRAGM SURFACES IN ACCORDANCE WITH THE DEPARTMENTS THERMAL SPRAYED COATINGS (METALLIZATION) PROGRAM, THERMAL SPRAYED COATINGS SPECIAL PROVISION AND SECTION 442 OF THE STANDARD SPECIFICATIONS.

GALVANIZE THE HIGH STRENGTH BOLTS, NUTS, WASHERS AND DIRECT TENSION INDICATORS IN ACCORDANCE WITH THE STANDARD SPECIFICATIONS.

USE AN ASTM F436 HARDENED WASHER WITH STANDARD AND SLOTTED HOLES UNDER EACH BOLT HEAD AND NUT.

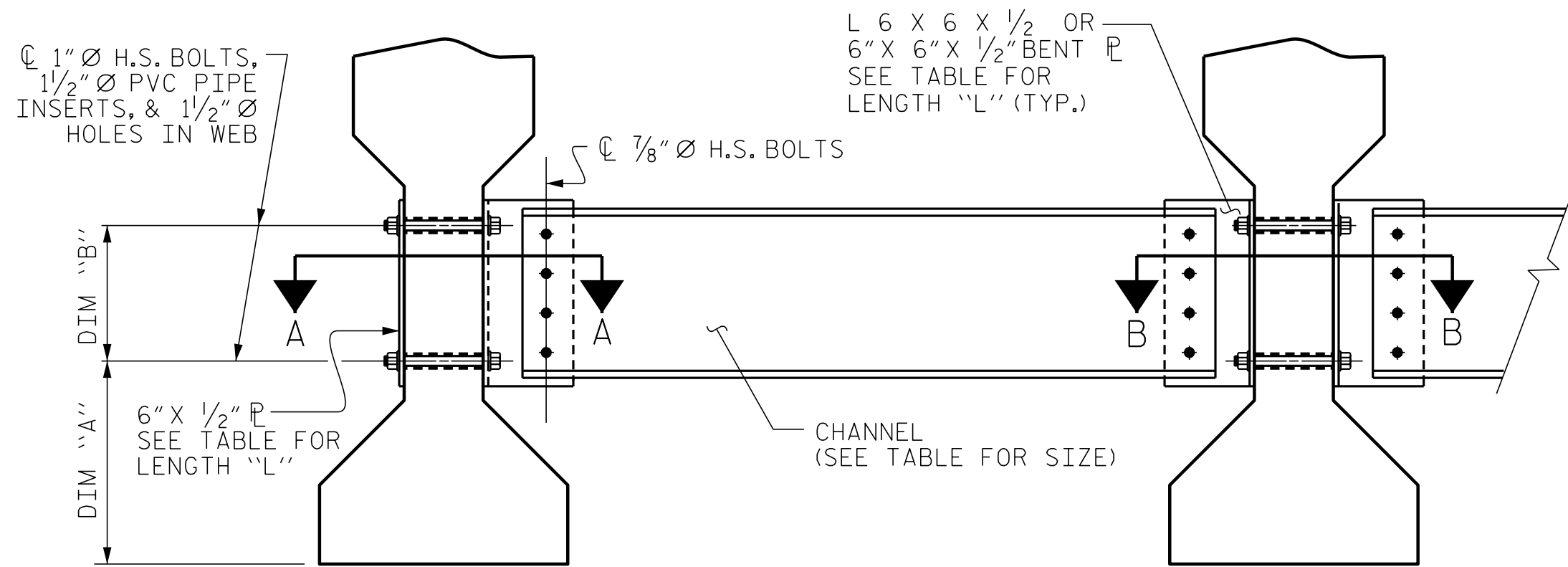
FOR BOLTS THROUGH THE GIRDER WEB, PROVIDE SUFFICIENT LENGTH OF THREADS ON ALL BOLTS TO ACCOMMODATE WASHERS AND THE THICKNESS OF CONNECTING MEMBER PLUS AT LEAST 1/4" PROJECTION BEYOND THE NUT.

INTERMEDIATE DIAPHRAGM ASSEMBLY SHALL COMPLY WITH SECTION 1072 OF THE STANDARD SPECIFICATIONS.

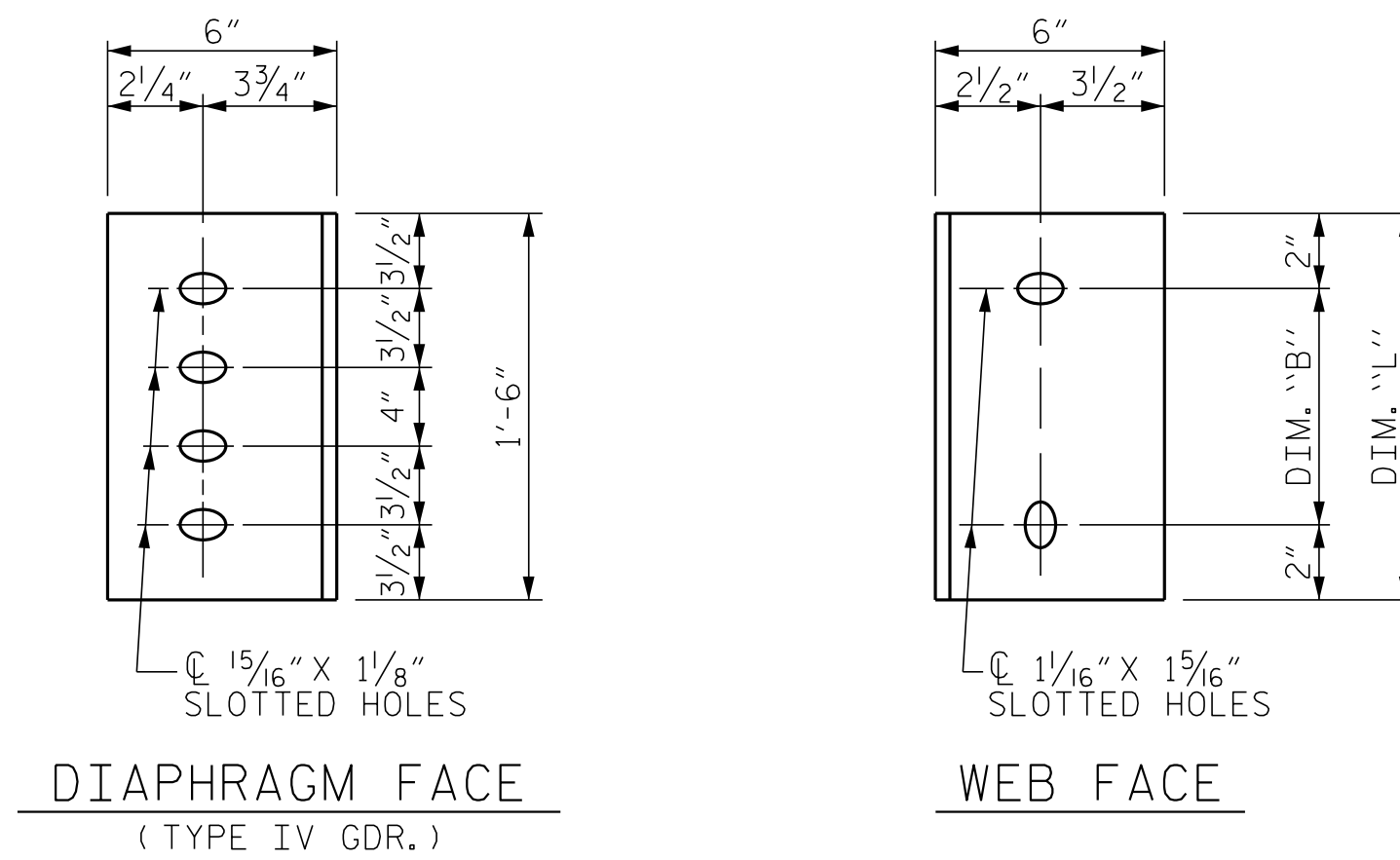
SUBMIT TWO SETS OF WORKING DRAWINGS FOR THE INTERMEDIATE DIAPHRAGM ASSEMBLY FOR REVIEW, COMMENTS AND ACCEPTANCE. AFTER REVIEW, COMMENTS, AND ACCEPTANCE, SUBMIT SEVEN SETS FOR DISTRIBUTION.

IN THE EXTERIOR BAYS, PLACE TEMPORARY STRUTS BETWEEN PRESTRESSED GIRDERS ADJACENT TO THE STEEL DIAPHRAGMS. STRUTS SHALL REMAIN IN PLACE 3 DAYS AFTER CONCRETE IS PLACED.

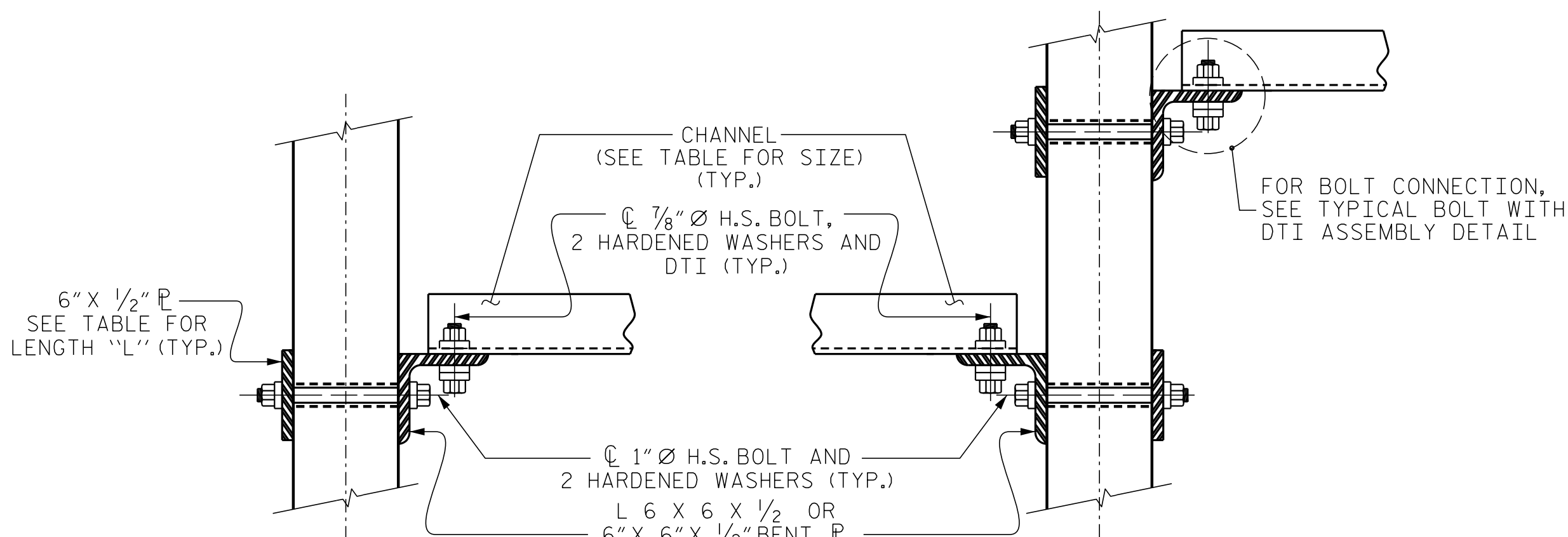
THE COST OF THE STEEL DIAPHRAGMS AND ASSEMBLIES SHALL BE INCLUDED IN THE UNIT PRICE BID FOR PRESTRESSED CONCRETE GIRDERS.



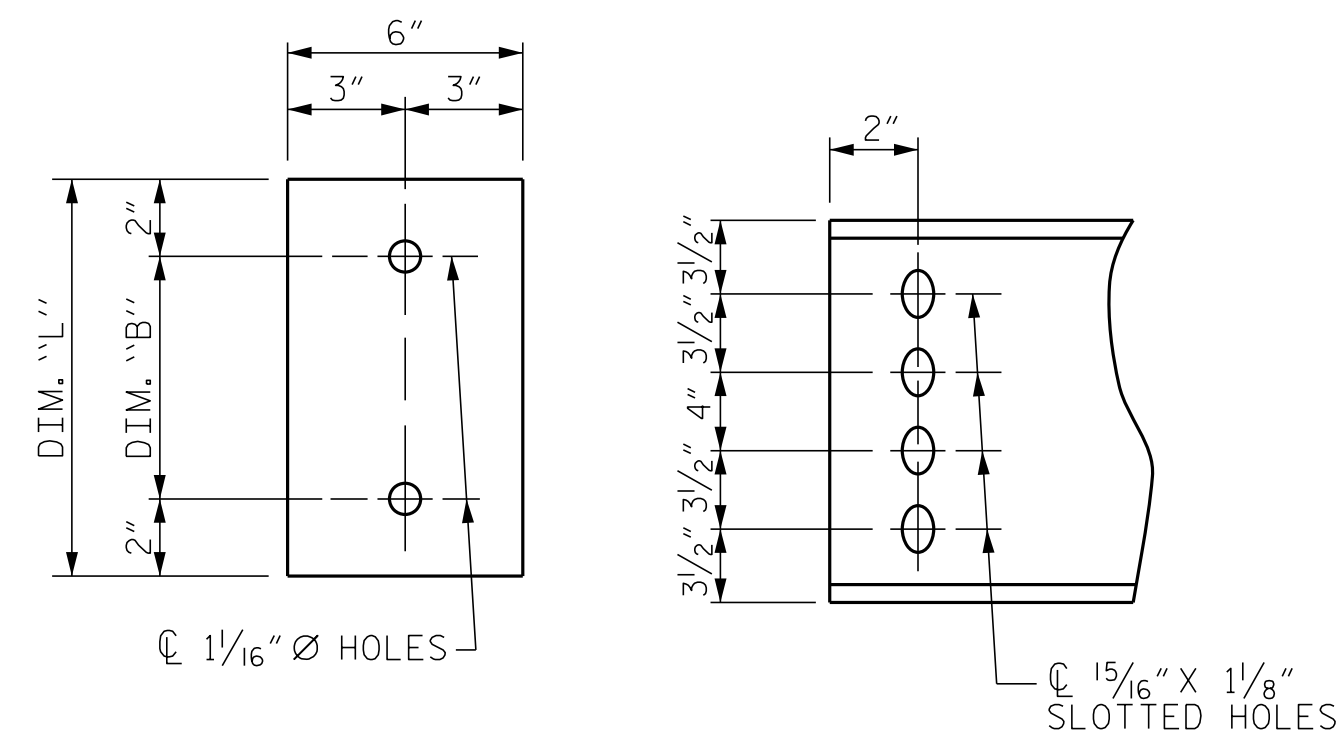
**PART SECTION AT INTERMEDIATE DIAPHRAGM**  
(TYPE IV GIRDER SHOWN)



**CONNECTOR PLATE DETAILS**



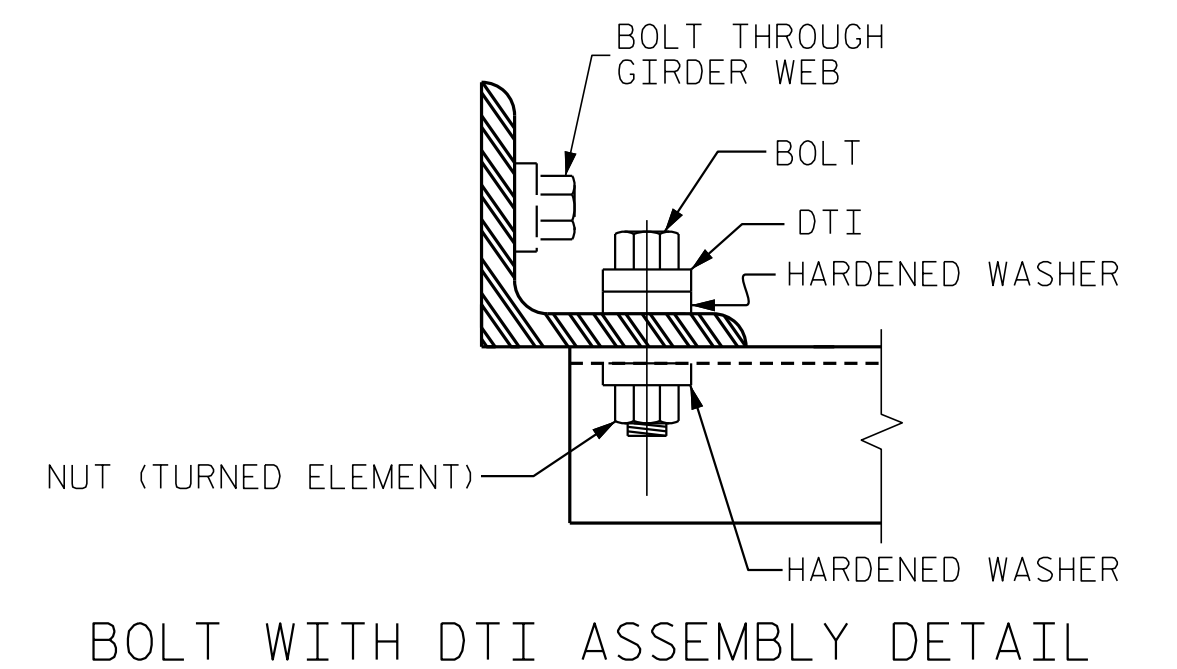
**CONNECTION DETAILS**



**PLATE DETAILS CHANNEL END**  
(TYPE IV GDR.)

**TABLE**

GIRDER TYPE	CHANNEL SIZE	DIM "A"	DIM "B"	DIM "L"
IV	MC 18 x 42.7	1'-9 1/2"	1'-2"	1'-6"



**BOLT WITH DTI ASSEMBLY DETAIL**

**DEAD LOAD DEFLECTION TABLE FOR GIRDERS OF SPAN A**

0.6" Ø LOW RELAXATION		GIRDERS 1 & 5										
TENTH POINTS		0	.1	.2	.3	.4	.5	.6	.7	.8	.9	0
CAMBER ( GIRDER ALONE IN PLACE )	↑	0	0.059	0.112	0.154	0.180	0.189	0.180	0.154	0.112	0.059	0
* DEFLECTION DUE TO SUPERIMPOSED D.L.	↓	0	0.041	0.080	0.111	0.131	0.138	0.131	0.111	0.080	0.041	0
FINAL CAMBER	↑	0	1/4"	3/8"	1/2"	5/8"	5/8"	9/16"	1/2"	3/8"	1/4"	0

\* INCLUDES FUTURE WEARING SURFACE  
ALL VALUES ARE SHOWN IN FEET ( DECIMAL FORM ), EXCEPT "FINAL CAMBER", WHICH IS GIVEN IN INCHES ( FRACTION FORM ).

**DEAD LOAD DEFLECTION TABLE FOR GIRDERS OF SPAN A**

0.6" Ø LOW RELAXATION		GIRDERS 2 THRU 4										
TENTH POINTS		0	.1	.2	.3	.4	.5	.6	.7	.8	.9	0
CAMBER ( GIRDER ALONE IN PLACE )	↑	0	0.059	0.112	0.154	0.180	0.189	0.180	0.154	0.112	0.059	0
* DEFLECTION DUE TO SUPERIMPOSED D.L.	↓	0	0.045	0.089	0.123	0.145	0.152	0.145	0.123	0.089	0.045	0
FINAL CAMBER	↑	0	3/16"	5/16"	3/8"	7/16"	7/16"	7/16"	3/8"	5/16"	3/16"	0

\* INCLUDES FUTURE WEARING SURFACE  
ALL VALUES ARE SHOWN IN FEET ( DECIMAL FORM ), EXCEPT "FINAL CAMBER", WHICH IS GIVEN IN INCHES ( FRACTION FORM ).

PROJECT NO. W-5600  
JOHNSTON COUNTY  
STATION: 217+31.76 -L-

SHEET 2 OF 2

ASSEMBLED BY : D. HODGE DATE : 1/18  
CHECKED BY : G.M. GILLAND DATE : 2/18  
DRAWN BY : TLA 6/05 REV. 5/1/06RRR KMM/GM  
CHECKED BY : VC 6/05 REV. 10/1/11 MAA/GM  
REV. 12/17 MAA/THC

ENGINEER OF RECORD:  
3/25/2019  
NORTH CAROLINA PROFESSIONAL SEAL 37400  
GREGORY M. GILLAND  
REGISTERED PROFESSIONAL ENGINEER  
1223 Jones Franklin Rd.  
Raleigh, N.C. 27606  
Bus: 919 851 8077  
Fax: 919 851 8107  
LICENSE NO. F-0377

STATE OF NORTH CAROLINA  
DEPARTMENT OF TRANSPORTATION  
RALEIGH  
STANDARD INTERMEDIATE STEEL DIAPHRAGMS FOR TYPE IV PRESTRESSED CONCRETE GIRDERS (RIGHT LANE)

REVISIONS						SHEET NO.
NO.	BY:	DATE:	NO.	BY:	DATE:	S2-9
1			3			TOTAL SHEETS
2			4			18

DOCUMENT NOT CONSIDERED FINAL UNLESS ALL SIGNATURES COMPLETED

P:\2017\17121.01\W-5600\USTO\Structures\DGM\L-over -Y9\DGN (R IGHT LANE)\WE I.dgn  
 3/20/2019 9:06:45 AM